

Welcome to the Public Meeting Regarding Diamond Chrome Plating

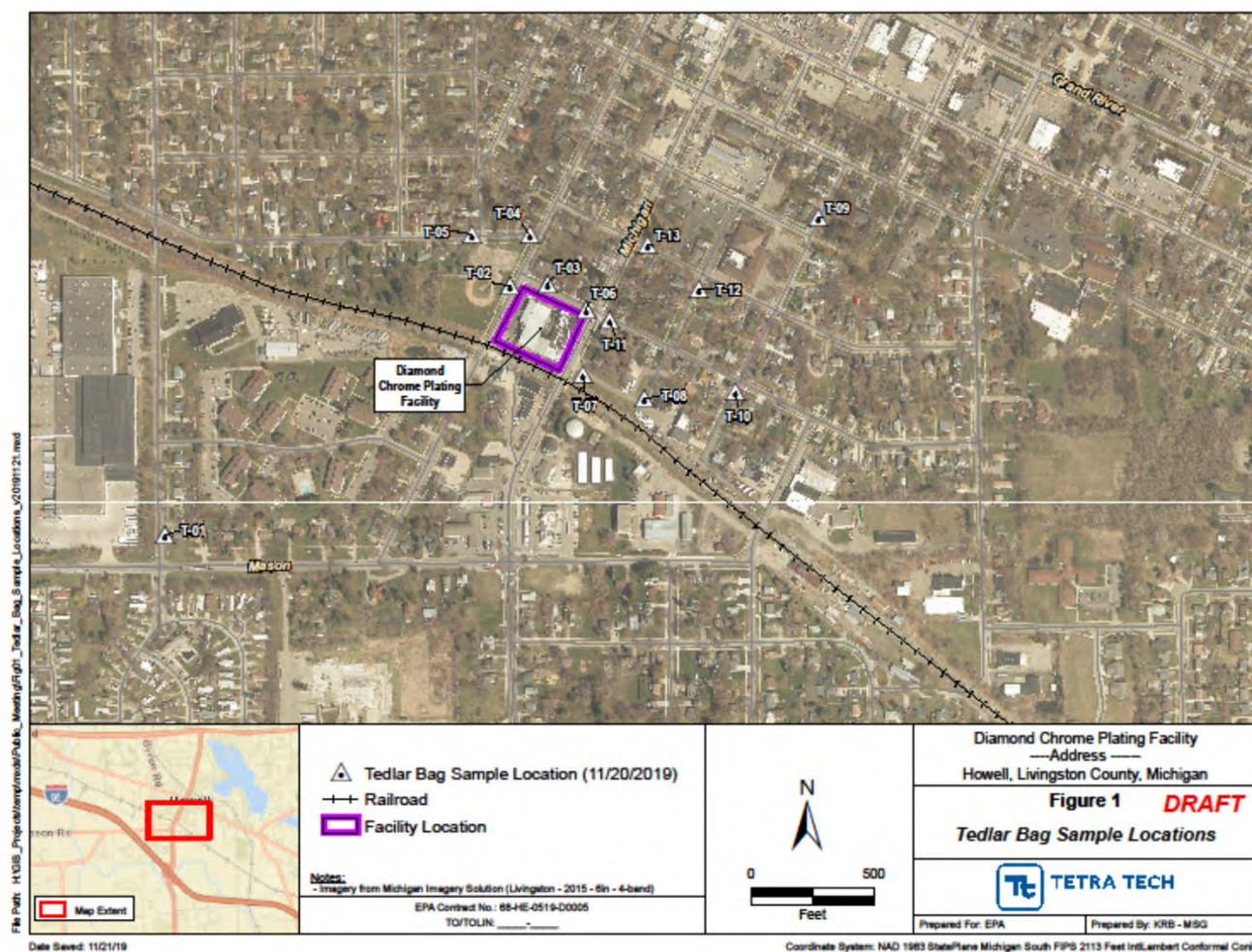
Livingston County Health Department

Michigan Department of Health and Human Services

Michigan Department of Environment, Great Lakes and Energy

Welcome

Matt Bolang,
Livingston County
Health Department





MICHIGAN DEPARTMENT OF
ENVIRONMENT, GREAT LAKES, AND ENERGY

DIAMOND CHROME INFORMATION MEETING



EGLE in your community





EGLE's Next Steps

- Collection of outdoor air data in coordination with U.S. EPA and DCP.
- Continue supporting the health departments' actions to address the public health issues in the community.
- EGLE will be evaluating DCP's plan to modify the degreaser to reduce emissions and plan to verify through monitoring.
- Further enforcement action is being considered.



Michigan Department of
Environment, Great Lakes, and Energy

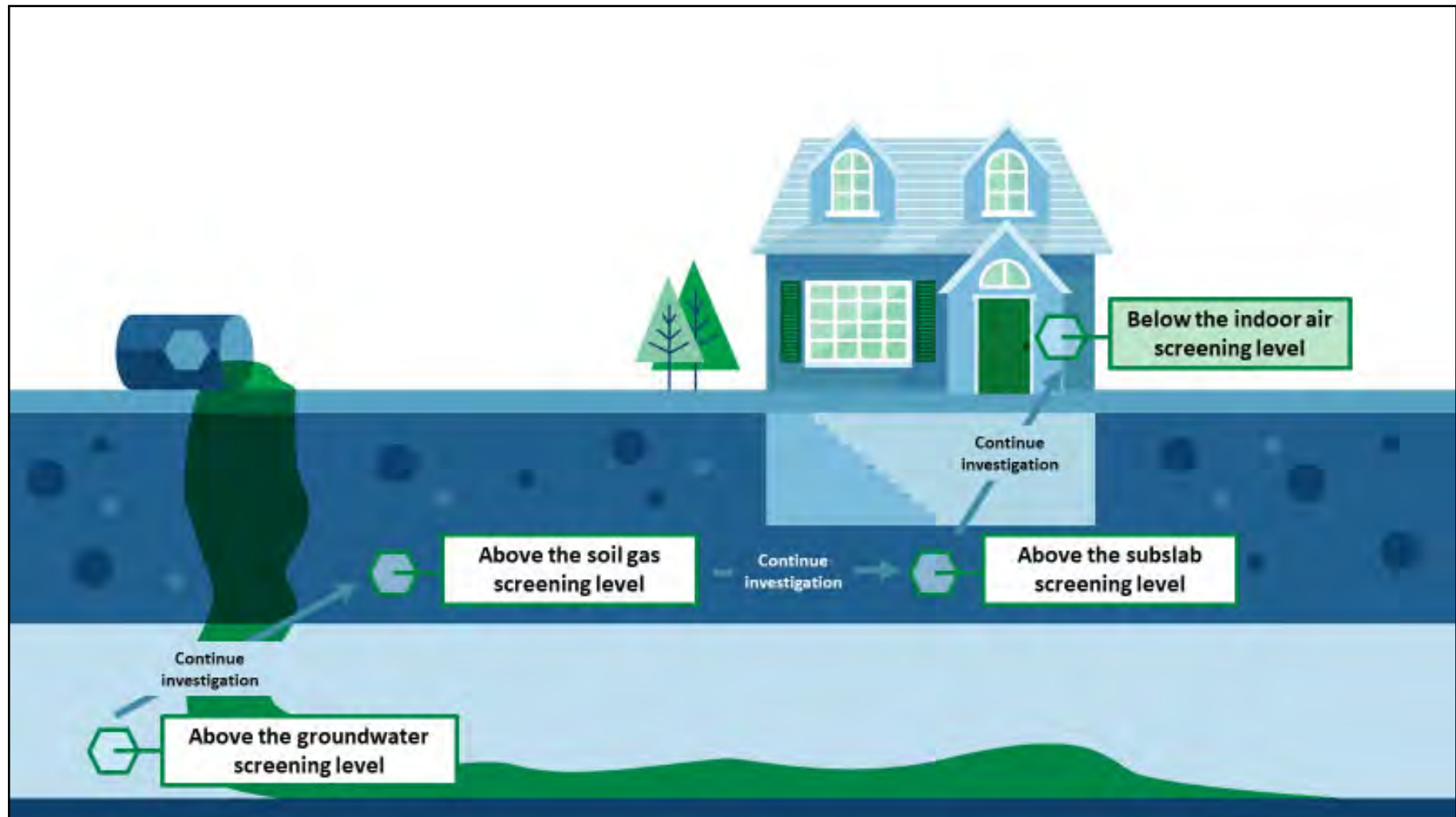
800-662-9278
Michigan.gov/EGLE

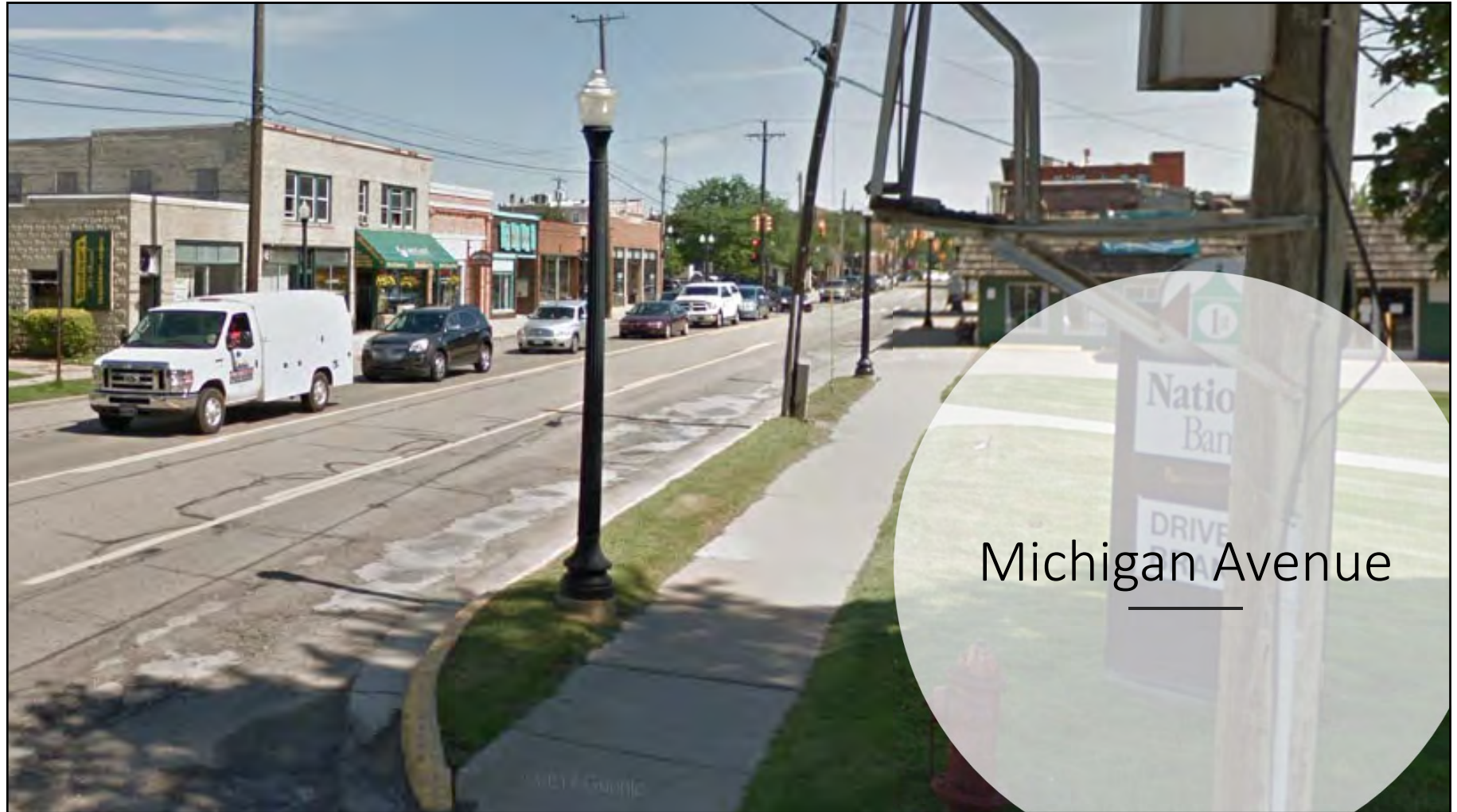


Follow us at: Michigan.gov/EGLEConnect

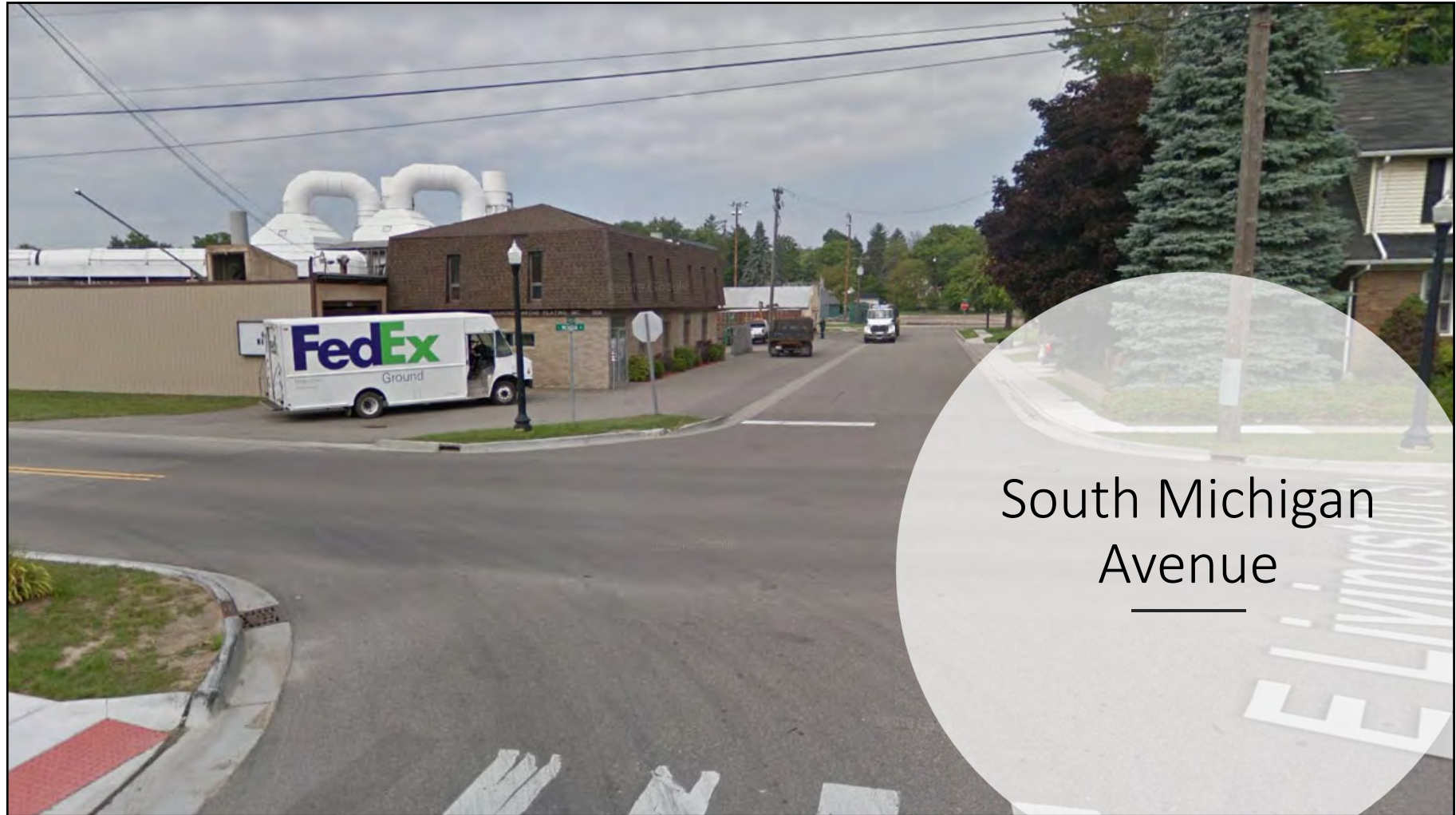
How MDHHS became involved in this investigation

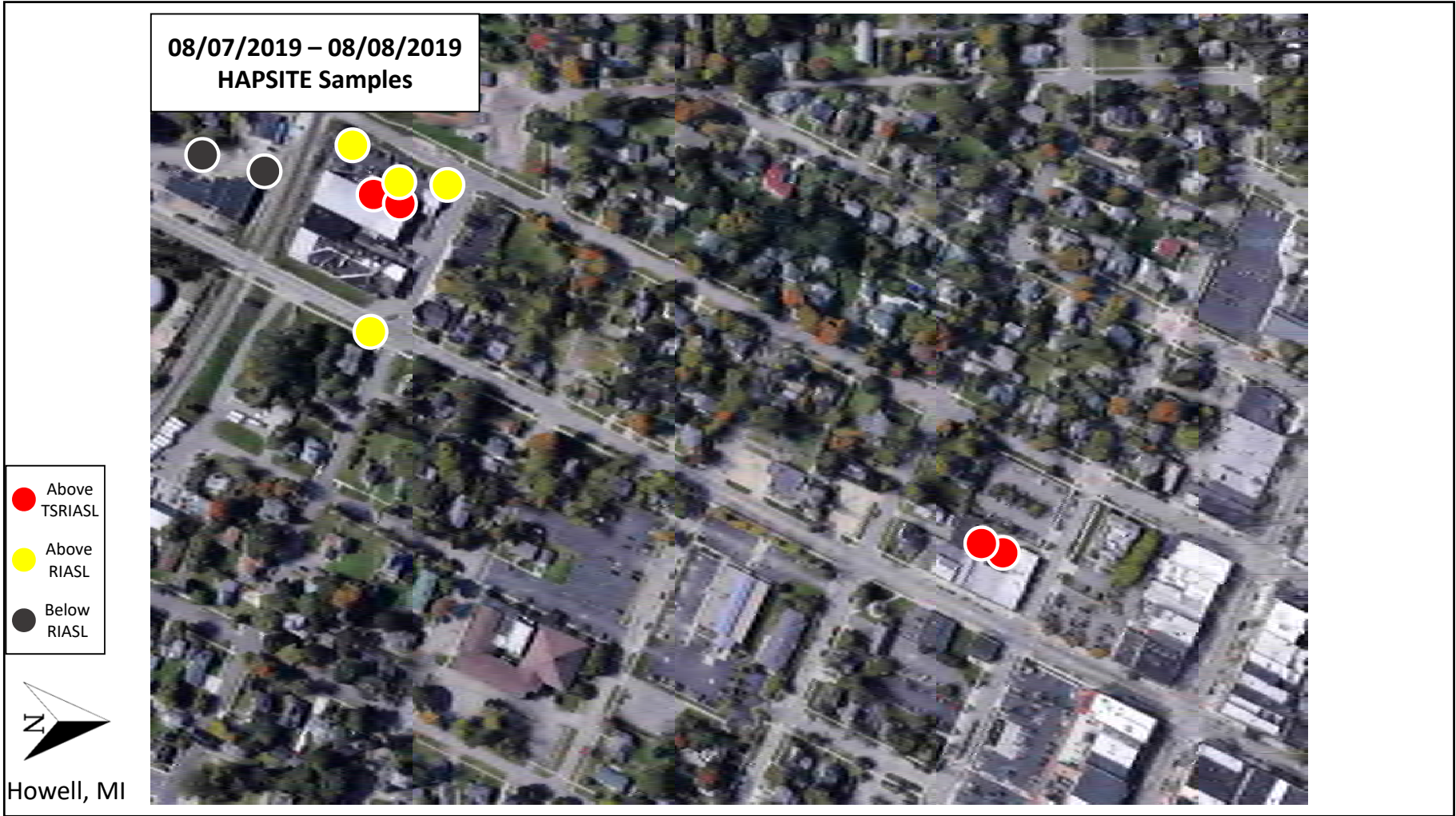
Vapor intrusion investigation

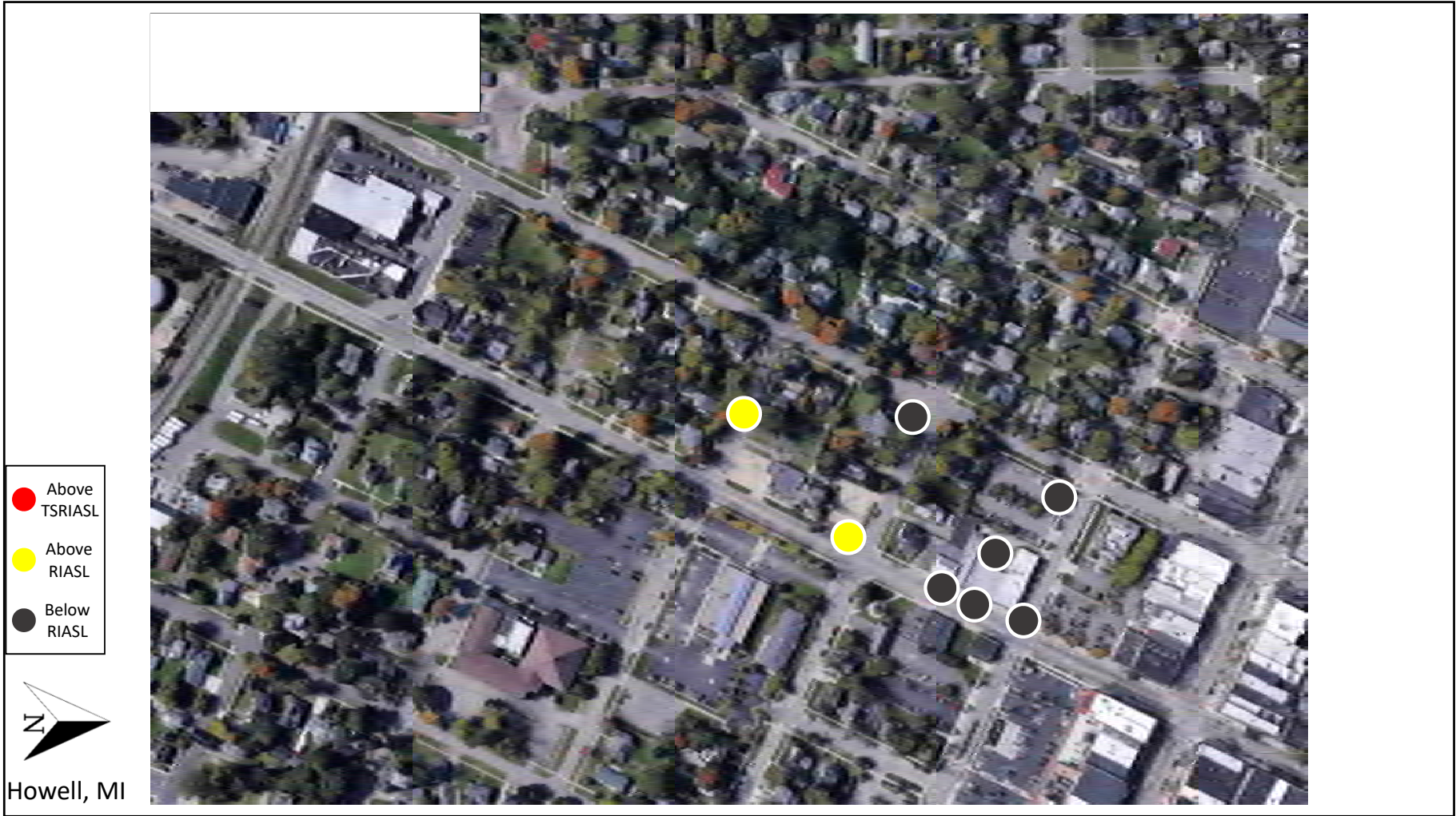




Michigan Avenue







MDHHS Health Information



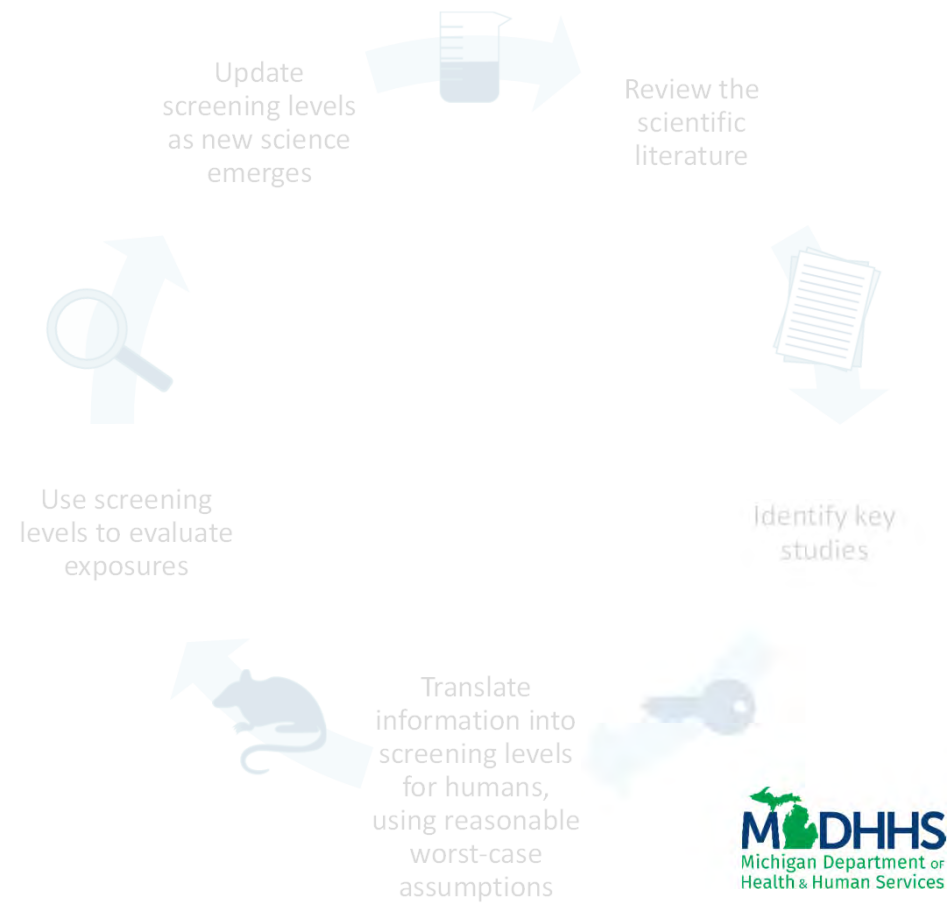
The Role of MDHHS

- MDHHS provides technical support to Local Health Departments
 - Evaluate environmental data
 - Determine if exposures pose a public health hazard
 - Provide public health recommendations
 - Provide outreach to the public, healthcare, and others

Health interpretation of air screening levels

- Exposure at or below the screening level
 - Minimal risk of health effects
- Exposure above the screening level
 - Indicates that contamination may pose a health hazard
 - Does not indicate that health effects will necessarily occur
- Whether or not you experience health effects depends on personal factors
 - Level and duration of exposure
 - Individual sensitivity
 - Genetics
 - Existing conditions
 - Lifestyle choices
 - Exposure from other sources

How do we develop and use screening levels?



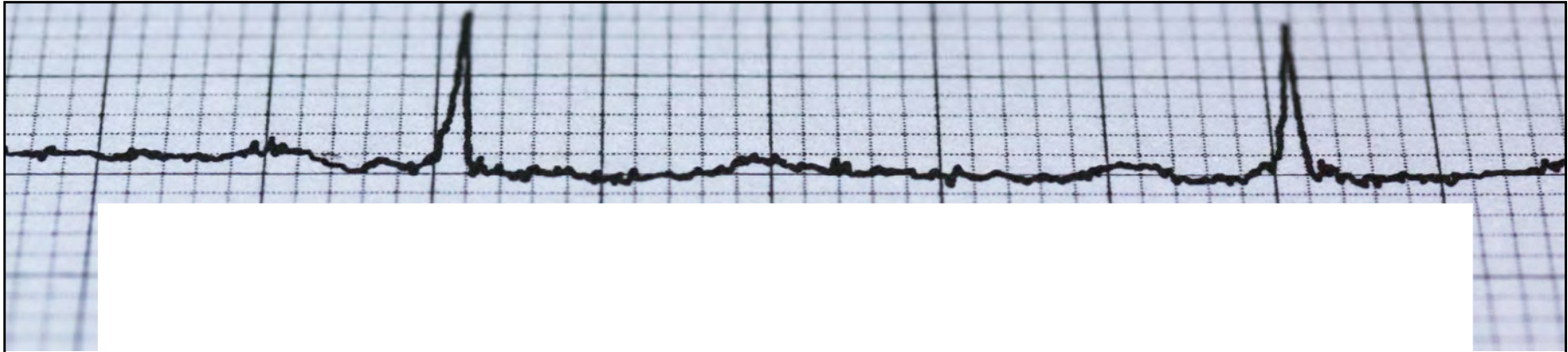
Screening levels for TCE

- 
- Action level
 - 2.0 $\mu\text{g}/\text{m}^3$ TCE
 - Indicates a need to reduce exposure and investigate
 - Alerts us to an issue before there is an immediate hazard
 - Time-sensitive action level
 - 6.0 $\mu\text{g}/\text{m}^3$ TCE
 - Indicates a need for more rapid response



defects in the fetus

- Breathing TCE for a long time may affect the immune system
- Breathing TCE over a lifetime can increase the risk of developing kidney cancer.
- There is also some evidence that TCE might increase the risk of developing non-Hodgkin's lymphoma (a type of blood cancer) or liver cancer.



See your doctor if you have health concerns

- Your doctor will be able to provide a personalized evaluation of your health
- Your doctor can talk to a medical toxicologist at the Poison Control Center to get more information and determine whether specific health tests would be appropriate

Questions?