



Aaron Keatley, Acting Director
 517-284-6700
 Mary Beth Thelen, Director's Management Assistant
 Vacant, Director's Chief of Staff
 Abigail Hendershott, MPART Executive Director
 Vacant, Equity and Inclusion Officer

James Clift,* Deputy Director
 517-275-0829
 Kimber Frantz, Management Assistant

Aaron Keatley, Chief Deputy Director
 517-284-6709
 Karen Shaler, Management Assistant

Travis Boeskool,* Deputy Director
 517-275-0829
 Kimber Frantz, Management Assistant
 Sarah Howes, Project and Strategy Coordinator

Office of the Clean Water Public Advocate
 Kristina Donaldson, Clean Water
 Public Advocate

Office of Climate and Energy
 Cory Connolly,* Climate and Energy Advisor

**Office of the Environmental Justice
 Public Advocate**
 Regina Strong, Environmental Justice
 Public Advocate

Office of the Great Lakes
 Emily Finnell, Great Lakes Senior Advisor
 and Strategist

Office of Legislative Affairs
 Vacant, Legislative Liaison

Office of Public Information
 Hugh McDiarmid Jr.,* Communications Manager

Air Quality Division
 Annette Switzer, Director
 517-284-6773

**Drinking Water and Environmental
 Health Division**
 Eric Oswald, Director
 517-284-6544

Materials Management Division
 Elizabeth Browne, Director
 517-284-6551

Oil, Gas, and Minerals Division
 Adam Wygant, Director
 517-284-6823

Remediation and Redevelopment Division
 Mike Neller, Director
 517-284-5144

Water Resources Division
 Teresa Seidel, Director
 517-284-5567

Environmental Support Division
 Michael McClellan, Director
 517-284-6807

Finance Division
 Paul McDonald, Director
 517-284-5003

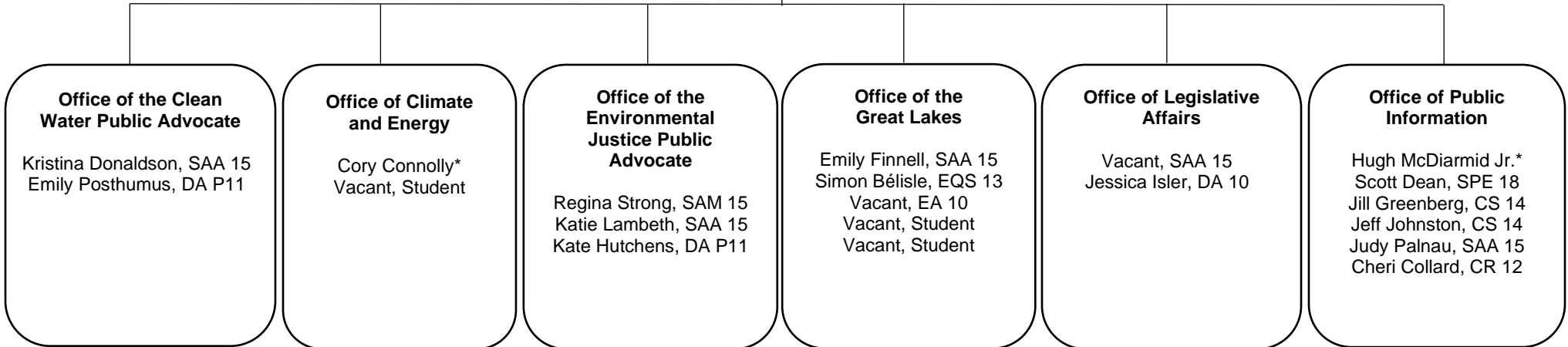
Information Management Division
 Brad Pagratis, Director
 517-388-1548

Environmental Investigation Section
 David Shaw, Chief, Law Enforcement Division
 Michigan Department of Natural Resources
 517-284-6019

Michigan Civil Service Commission
 Hillary Fabus, Human Resources Director
 517-897-5562

*Denotes unclassified positions .

James Clift,* Deputy Director
 Kimber Frantz, SEMA 13



*Denotes unclassified positions .