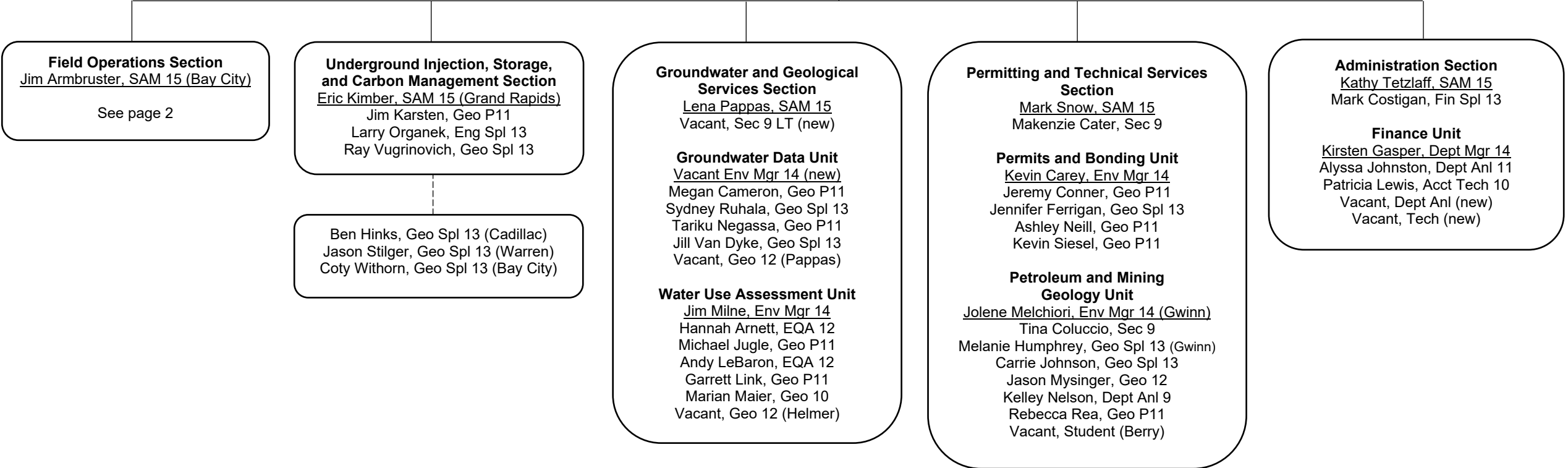


GEOLOGIC RESOURCES MANAGEMENT DIVISION
Adam Wygant, Director
 Senior Policy Executive 18
 Trisha Hagerman, SEMA 11



Field Operations Section
Jim Armbruster, SAM 15 (Bay City)

Groundwater and Remediation
Kaitlyn Bertram, Geo Spl 13 (Cadillac)

Orphan Well Program
Madeline Jazdyk, Geo Spl 13 (Gaylord)
Keith Kidder, Geo Spl 13 (Lansing)
Vacant, Geo Spl 13 (Duley)

Bay City District Office
Amy Rivest, Env Mgr 14
Tim Bertram, Geo 12
Amber Ferguson, Sec 9
Michael Potter, Geo 10
Kierstin Rose, Geo P11
Kasey Todd, Geo P11
Coty Withorn, Geo Spl 13

Cadillac District Office
Susanne Biteman, Env Mgr 14
Colter Bossel, Geo P11
Laura Cass, Geo 9
Ben Hinks, Geo Spl 13
Jack Hybza, Geo 12
Mel Kiogima, Geo 12
Sarah Warner, Sec 9

Gaylord District Office
Steven Buyze, Env Mgr 14
Matthew Garnett, Geo P11
David Lawrence, Geo 12
Marlene Needham, Sec 9
Stephen Ogden, Geo P11
Garrett Powell, Geo 10
Christopher Redlon, Geo 10
Michael Shelton, Geo 12
Vacant, Geo 9-P11 (Negassa)

Lansing District Office
Louis Schineman, Env Mgr 14
Emma Atkinson, Geo P11
Kristine Shimko, Geo 12
Vacant, Geo 9-P11 (Karsten)
Vacant, Geo 9 LT (Hill)

Kalamazoo District Office
Shaun Lehman, Geo 12
Ken Prior, Geo 12 (G Rapids)

Warren District Office
Brian Hohentanner, Geo 9
Jason Stilger, Geo Spl 13
Vacant, Geo 12 (Stilger)