



JENNIFER M. GRANHOLM
GOVERNOR

STATE OF MICHIGAN
DEPARTMENT OF ENVIRONMENTAL QUALITY
LANSING



STEVEN E. CHESTER
DIRECTOR

April 25, 2006

Ms. Connie Ochs
Director Wastewater
City of Monroe
2205 East Front Street
Monroe, MI 48161-1972

Dear Ms. Ochs:

SUBJECT: Operating Plan Approval
Monroe Metropolitan Septage Receiving Facility

Review of your response to our August 2, 2005, Septage Receiving Draft Operating Plan review e-mail is complete. The response addresses our concerns. The operating plan is approved. The receiving facility must operate in accordance with the approved plan. If a change in operations or conditions is anticipated, please file an amendment to the plan at least thirty days prior to the proposed date for implementation.

Thank you for your patience and for your continued environmental stewardship. If you have any questions regarding this matter, please contact me at the number below.

Sincerely,

Matthew Campbell
Septage Waste Program Coordinator
Onsite Wastewater Unit
Drinking Water and Environmental Health Section
Water Bureau
517-335-4178

MCC:DLR

cc: Ms. Carol Austerberry, R.S., M.S., Monroe Co. Health Dept.
Mr. Richard Falardeau, Water Bureau, DEQ
Ms. Debra Snell, Jackson District Office, DEQ



CITY OF MONROE

Wastewater Treatment

August 23, 2005

Matt Campbell
Septage Waste Coordinator
DEQ
Constitutional Hall, 2nd floor-north
Lansing, MI 48909-7773

RECEIVED
MICH. DEPT. OF ENVIRONMENTAL QUALITY

AUG 29 2005

WATER BUREAU
DWEHS

Dear Matt,

I have enclosed the Monroe Metro WWTP Operating Plan for Accepting Domestic Sewage. I believe the plan includes all requirements from your communication dated June 9, 2005. The plan was public noticed on July 22, 2005 in the Monroe Evening News. To date, I have not received any written comments. The plan was also mailed to the Monroe Health Department; Attention Director of Environmental Health, Monroe City Manager, and to the supervisors of Frenchtown Charter, Monroe Charter and Raisinville Townships.

The Monroe WWTP has made a commitment to continue receiving domestic sewage and we will work with the DEQ in obtaining their approval. Do not hesitate to call if there are any questions about our plan.

Sincerely,

Connie M. Ochs
Director Wastewater

Monroe Metro Wastewater Treatment Plant

Operating Plan for Accepting Domestic Septage

In accordance with the State of Michigan House Bill 5771 and 5772 amend part 117, septage waste servicers, of the Natural Resources and Environmental Protection Act, 1994 PA 451, the Monroe WWTP will be defined as a receiving facility for domestic sewage. The following are information and conditions for accepting domestic sewage by licensed septage haulers.

1. The Monroe WWTP is located 2205 East Front Street, Monroe MI 48161. Our septage receiving area is at the east side of the plant, east of the solids handling building, just south of the aeration tanks. The brick building has signage that states "Septage Receiving Building". Trucks need to back up to the hook-up area at the east end of the building.
2. Hours of operation are 7:00am-5:00pm seven days a week. Prior approval from the Monroe WWTP Superintendent or designee will be required for access to the dump station beyond the designated hours of operation. The Monroe WWTP reserves the right to deny access at times of wet weather or other unforeseeable circumstances.
3. The Monroe WWTP Facility only accepts **domestic septage** such as from home septic tanks, recreational vehicles, portable toilets and type III marine sanitation devices. All other types of septage are not allowed (such as fats, oils and grease (FOG) from food establishment septage, grease interceptors, oil/water separators, etc). Disposing of these types of septage will be punishable by law.
4. The current disposal cost is \$0.070 per gallon. All discharges are metered, recorded and billed by this facility.
5. The Monroe WWTP service area is only **Monroe County** in accordance with City of Monroe ordinance 570-32.
6. Other conditions for receiving domestic septage are as follows, and may be amended as needed, but are not limited to only the following.
 - a. All trucks must be licensed through Michigan Department of Environmental Quality.
 - b. All septic hauling firms must submit a \$100.00 deposit to be eligible to discharge at this facility.
 - c. Each truck load must have a completed bill of lading which includes metered amount, driver name, and customer name and address.
 - d. All discharges are to be direct hose connection to flow meter.
 - e. Water is provided to clean area, not to clean trucks and equipment. Any hauler that does not clean up after themselves, will be barred from further discharging.
 - f. Bills are sent out weekly and should be paid in a timely manner. Haulers will be locked out until payment is made. A second lock out will cause termination of privileges at this facility.
 - g. The receiving facility currently accepts an average of 9,450 gallons per day. We have had a peak flow of 32,500 gallons per day. We are limiting the facility to 100,000 gallons per day with a total organic load of 3,125 pounds of 5-day biochemical oxygen demand per day.

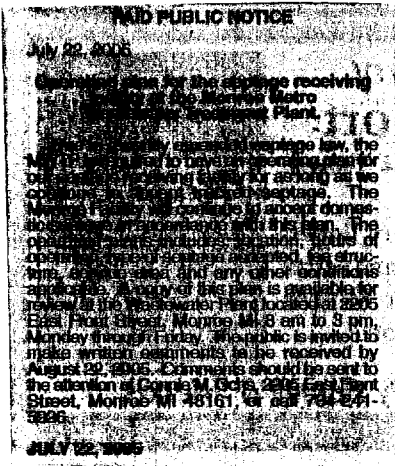
Updated By
Spencer Maniaci, Superintendent of Wastewater
July 1, 2011

RECEIVED
MICH. DEPT. OF ENVIRONMENTAL QUALITY
AUG 29 2005
WATER BUREAU
DWEHS

AFFIDAVIT OF PUBLICATION

STATE OF MICHIGAN SS
COUNTY OF MONROE

Shirley Hyden, being first duly sworn, says that she is the Secretary of The Monroe Evening News, a newspaper published in the English language for the dissemination of local or transmitted news and intelligence of a general character and legal news and which is a duly qualified newspaper, printed, published and circulated in the County of Monroe. The annexed notice is a printed copy taken from said newspaper, and has been duly published in said newspaper for ONE insertions, and that the first publication thereof was on the 22nd day of JULY A.D. 2005 and the last publication thereof was on the 22nd day of JULY A.D. 2005.



Shirley Hyden

Sworn to and subscribed before me this 22nd day of JULY A.D. 2005.

Janet Latondress
Notary Public, Monroe County, Mich.
JANET LATONDRESS

Notary Public, Monroe County, Michigan
My commission expires January 25, 2007