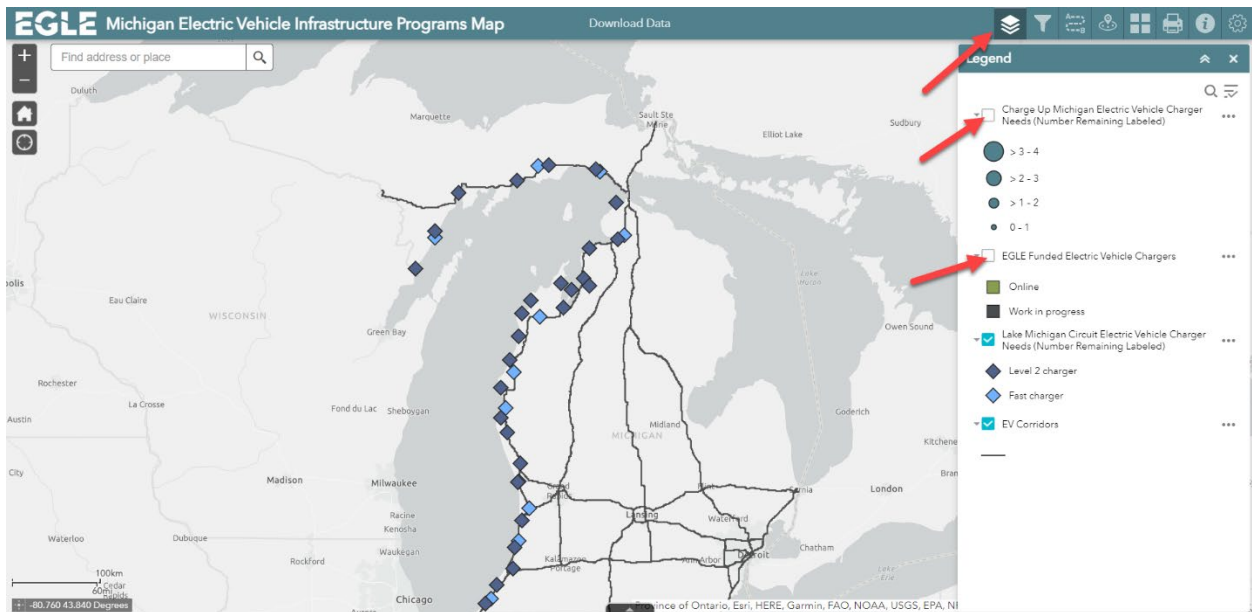
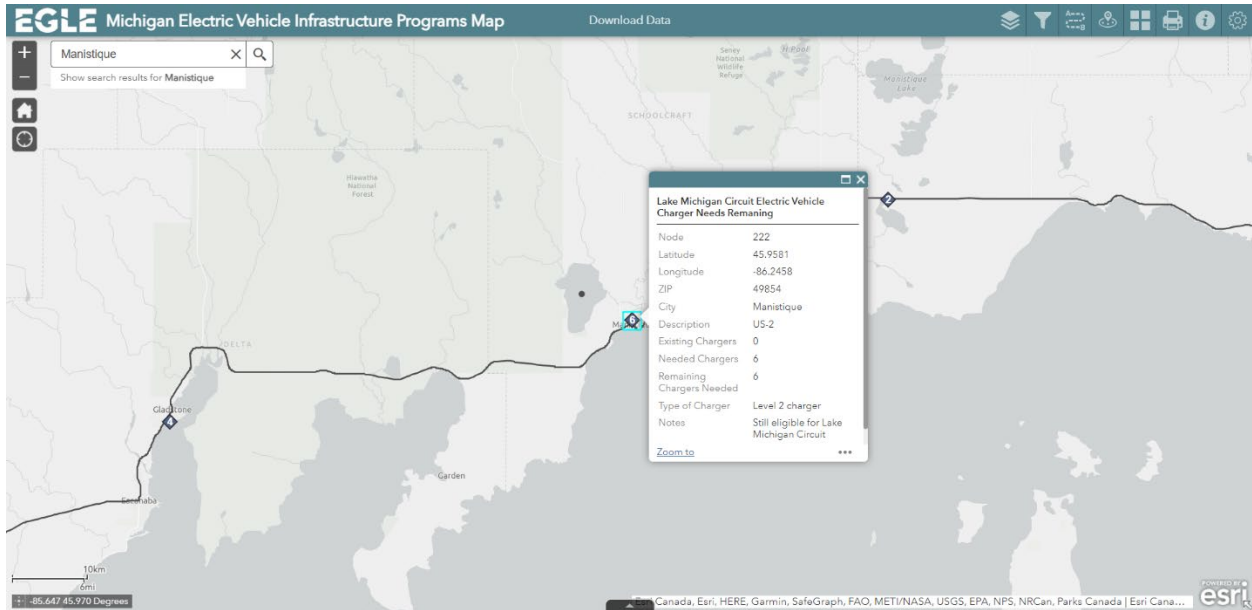


Question: Just wanted to see if a business in Manistique or Schoolcraft County would be eligible for this grant. On the map it has a 0. Is that because of the NEVI grant? Or can a business use this grant for a level 2 or 3 charging station in our area?

Answer: For Lake Michigan Circuit, there are 6 level 2 chargers available for funding in Manistique. Make sure you are looking at the “Lake Michigan Circuit” layer on the [map](#). To only view the “Lake Michigan Circuit” layer, click on the legend button on the top of the tool bar and unclick the “Charge Up Michigan” and “EGLE funded” layers. If you have any questions, please let me know.



Question: Are there any issues or special considerations with having a relative perform the EV fast charger install? Or maybe using a company that a relative works for?

Answer: As long as the company the relative works at meets the qualifications they can receive funding.

Question: Is that number referencing the number of charging stations at each location, or the number of ports?

Answer: Charging Stations

Question: Will there be a webinar for more information on Lake Michigan Circuit?

Answer: Yes – more information to come.