

Volume 2

South Loading Docks

DLS22

# Volume 2 - Table of Contents

## A. General Information

- A1 General Facility Description
- A2 Chemical and Physical Analysis
- A3 Waste Analysis Plan
- A4 Security Procedures and Equipment
- A5 Inspection Schedules
- A6 Preparedness and Prevention
- A7 Contingency Plan
- A8 Traffic Information
- A9 Facility Location Information
- A10 Personnel Training Program
- A11 Closure and Postclosure Plan (C/PC)
- A12 Closure and Postclosure Cost Estimates
- A13 Topographical Map
- A14 Liability Mechanism -----To Be Determined-----
- A15 Financial Assurance Instrument -----To Be Determined-----

## B. Supplemental Information

- B1 Status of Compliance with other Federal laws
- B2 Corrective Action Information
- B3 Hydrogeologic Report
- B4 Environmental Assessment
- B5 Environmental Monitoring Program
- B6 Engineering Plans Index
  - Attachment B6-220.0 South Loading Docks Sheet Index
  - Attachment B6-220.1 Site Development Plan South Loading Docks
  - Attachment B6-220.2 South Loading Docks Floor Plan
  - Attachment B6-220.3 South Loading Docks Exterior Elevations

# Volume 2 - Table of Contents

## **C. Facility Specific Information**

**C1 Use and Management of Containers**

**C4 Treatment**

**C13 Air emissions from process vents, equipment leaks, tanks, containers and surface impoundments**



FORM EQP 5111 Template

**A1: GENERAL FACILITY DESCRIPTION**

**(Volume 2)**

**See Volume 1**

**A1: General Facility Description**

FORM EQP 5111 TEMPLATE

**A2: CHEMICAL AND PHYSICAL ANALYSES**

**(Volume 2)**

**See Volume 1**

**A2: Chemical and Physical Analysis**

FORM EQP 5111 TEMPLATE

**A3: WASTE ANALYSIS PLAN (WAP)**

**(Volume 2)**

**See Volume 1**

**A3: Waste Analysis Plan**

**A4: SECURITY PROCEDURES AND EQUIPMENT**

40 CFR §264.14

**(Volume 2)**

**See Volume 1**

**A4: Security Procedures and Equipment**



FORM EQP 5111 TEMPLATE

**A5: INSPECTION REQUIREMENTS**

**(Volume 2)**

**See Volume 1**

**A5: Inspection Requirements**

FORM EQP 5111 TEMPLATE

**A6: PREPAREDNESS AND PREVENTION OR WAIVER**

**(Volume 2)**

**See Volume 1**

**A6: Preparedness and Prevention or Waiver**

## FORM EQP 5111 TEMPLATE MODULE A7

### A7: CONTINGENCY PLAN

#### (Volume 2)

This document is an attachment to the Michigan Department of Environment, Great Lakes, and Energy's (EGLE) Instructions for Completing Form EQP 5111, Operating License Application Form for Hazardous Waste Treatment, Storage, and Disposal Facilities. See Form EQP 5111 for details on how to use this attachment.

The administrative rules promulgated pursuant to Part 111, Hazardous Waste Management, of Michigan's Natural Resources and Environmental Protection Act, 1994 PA 451, as amended (Act 451), R 299.9501, R 299.9508(1)(b), R 299.9504(1)(c), R 299.9521(3)(b), R 299.9607, and Title 40 of the Code of Federal Regulations (CFR) §§264.50 through 264.56, and 270.14(b)(7), establish requirements for contingency plans at hazardous waste management facilities. All references to 40 CFR citations specified herein are adopted by reference in R 299.11003. This license application template addresses requirements for a contingency plan at the hazardous waste management facility for DLD Environmental Services, Inc (DLD) in Plainwell,, Michigan.

It is recommended that DLD perform annual drill exercises with the local fire department and emergency responders using the contingency plan to make sure all staff are familiar with the plan and determine whether the plan needs any updating.

(Check as appropriate)

- Applicant for Operating License for Existing Facility
- Applicant for Operating License for New, Altered, Enlarged, or Expanded Facility

## Table of Contents

This template is organized as follows:

### INTRODUCTION

#### A7.A BACKGROUND INFORMATION

- A7.A.1 Purpose of the Contingency Plan
- A7.A.2 Description of Facility Operations
- A7.A.3 Identification of Potential Situations

#### A7.B EMERGENCY COORDINATORS

- A7.B.1 Identification of Primary and Alternate Emergency Coordinators
- A7.B.2 Qualifications of the Emergency Coordinators

Table A7.B.1 Identification of Primary and alternate Emergency Coordinators

- A7.B.3 Authority to Commit Resources

#### A7.C IMPLEMENTATION OF THE CONTINGENCY PLAN

#### A7.D EMERGENCY PROCEDURES

- A7.D.1 Immediate Notification Procedures for Facility Personnel and State and Local Agencies with Designated Response Roles

Table A7.D.1 Federal, State, and Local Response Contacts

- A7.D.2 Procedures to Be Used for Identification of Releases
- A7.D.3 Procedures to Be Used to Assess Potential Hazards to Human Health and the Environment
- A7.D.4 Procedures to Determine if Evacuation is Necessary and Immediate Notification of Michigan Pollution Emergency Alerting System and National Response Center

- A7.D.5 Procedures to Be Used to Ensure That Fires, Explosions, and Releases Do Not Occur, Reoccur, or Spread During the Emergency**
- A7.D.6 Procedures to Be Used to Monitor Equipment Should Facility Operations Cease**
- A7.D.7 Procedures to Provide Proper Treatment, Storage, and Disposal for Any Released Materials**
- A7.D.8 Procedures for Cleanup and Decontamination**

## **A7.E RESUMPTION OF OPERATIONS AND RECORD KEEPING REQUIREMENTS**

- A7.E.1 Procedures to Be Used Prior to Resuming Operations**
- A7.E.2 Record Keeping Requirements**
  - A7.E.2(a) Operating Record**
  - A7.E.2(b) Written Incident Report**

## **A7.F PROCEDURE FOR ASSESSING OFFSITE RISK DURING AND AFTER A FIRE/EXPLOSION INCIDENT OR SIGNIFICANT RELEASE**

## **A7.G PROCEDURES FOR REVIEWING AND AMENDING THE CONTINGENCY PLAN**

**Attachment A7.1 DLS-22 Evacuation Route Diagram**

**Attachment A7.2 DLS-22 Emergency Equipment Descriptions**

**Attachment A7.4 Checklist for Tracking Facility Response Actions During and After a Fire/Explosion Incident**

## INTRODUCTION

### A7.A BACKGROUND INFORMATION

#### A7.A.1 Purpose of the Contingency Plan [R 299.9607 and 40 CFR §264.51 and 264.53]

See Volume 1, Section A7.A.1

#### A7.A.2 Description of Facility Operations

Reference is made to Volume 1, Section A7.A.2, with the addition of the following information specific to new hazardous waste management unit DLS-22:

The building housing DLS-22 will be built of hydrophobic cement and steel, and will have secondary containment in compliance with the containment standards. The entire area will be fully licensed, as it is intended for hazardous waste storage.

DLS-22: This area will be a hazardous waste truck loading and unloading area. The dock area will consist of five (5) loading bays and one (1) bay for a roll-off container. In addition the DLS-21 area will contain rack storage for hazardous waste. See Volume 2, Section B6 for engineering drawings applicable to DLS-22.

#### A7.A.3 Identification of Potential Situations

See volume 1, Section A7.A.3

### A7.B EMERGENCY COORDINATORS [R 299.9607 and 40 CFR §264.52 and 264.55]

#### A7.B.1 Identification of Primary and Alternate Emergency Coordinators [R 299.9607 and 40 CFR §264.52 and 264.55]

See Volume 1, Section A7.B.1.

#### A7.B.2 Qualifications of the Emergency Coordinators [R 299.9607 and 40 CFR §264.55]

See Volume 1, Section A7.B.2.

**Table A7.B.1 Identification of Primary and Alternate Emergency Coordinators**

See Volume 1, Table A7.B.1.

**A7.B.3 Authority to Commit Resources**  
[R 299.9607 and 40 CFR §264.55]

See Volume 1, Section A7.B.3.

**A7.C IMPLEMENTATION OF THE CONTINGENCY PLAN**  
[R 299.9607 and 40 CFR §264.51, 264.52, and 264.56]

See Volume 1, Section A7.C.

**A7.D EMERGENCY PROCEDURES**  
[R 299.9607 and 40 CFR §264.51, 264.52, and 264.56]

**A7.D.1 Immediate Notification Procedures for Facility Personnel and State and Local Agencies with Designated Response Roles**  
[R 299.9607 and 40 CFR §264.51, 264.52, and 264.56]

See Volume 1, Section A7.D.1.

**A7.D.2 Procedures to Be Used for Identification of Releases**  
[R 299.9607 and 40 CFR §264.51, 264.52, and 264.56]

See Volume 1, Section A7.D.2.

**A7.D.3 Procedures to Be Used to Assess Potential Hazards to Human Health and the Environment**  
[R 299.9607 and 40 CFR §264.51, 264.52, and 264.56]

See Volume 1, Section A7.D.3.

**A7.D.4 Procedures to Determine if Evacuation Is Necessary and Immediate Notification of Michigan Pollution Emergency Alerting System, and the National Response Center**

[R 299.9607 and 40 CFR §264.51, 264.52, and 264.56]

Reference is made to Volume 1, Section A7.D.4, with the addition of the following information specific to DLS-22:

- Upon completion, evacuation plans for DLS-22 will be included in Volume 2, Attachment A7-1.

**A7.D.5 Procedures to Be Used to Ensure that Fires, Explosions, and Releases Do Not Occur, Reoccur, or Spread During the Emergency**

[R 299.9607 and 40 CFR §264.51, 264.52, and 264.56(e), 264.227, and 264.200]

Reference is made to Volume 1, Section A7.D.4, with the addition of the following information specific to DLS-22:

- Upon completion, DLS-22 Evacuation Diagrams will be found in Volume 2, Attachment A7-1
- Upon completion, an Emergency Equipment List for DLS-22 will be found in Volume 2, Attachment A7-2.

**A7.D.6 Procedures to Be Used to Monitor Equipment Should Facility Operations Cease**

[R 299.9607 and 40 CFR §264.51, 264.52, and 264.56(f)]

See Volume 1, Section A7.D.6.

**A7.D.7 Procedures to Provide Proper Treatment, Storage, and Disposal for Any Released Materials**

[R 299.9607 and 40 CFR §264.51, 264.52, and 264.56(g)]

See Volume 1, Section A7.D.7.

**A7.D.8 Procedures for Cleanup and Decontamination**

[R 299.9607 and 40 CFR §264.51, 264.52, and 264.56(h)]

See Volume 1, Section A7.D.8.



**A7.E NOTIFICATION AND RECORD KEEPING REQUIREMENTS**

[R 299.9607 and 40 CFR §264.51, 264.52, and 264.56(l) and (j)]

**A7.E.1 Procedures to Be Used to Notify State and Federal Officials Prior to Commencement of Operations**

[R 299.9607 and 40 CFR §264.51, 264.52, and 264.56]

See Volume 1, Section A7.E.1.

**A7.E.2 Record Keeping Requirements**

[R 299.9607 and 40 CFR §264.51, 264.52, and 264.56(j)]

See Volume 1, Section A7.E.2.

**A7.E.2(a) Operating Record**

See Volume 1, Section A7.E.2(a)

**A7.E.2(b) Written Incident Report**

See Volume 1, Section A7.E.2(b)

**A7.F Procedure for Assessing Offsite Risk During and After a fire/explosion incident or Significant Release**

[R 299.9521(3)(b) and R 299.9607 and 40 CFR §264.56(d)]

See Volume 1, Section A7.F

**A7.G PROCEDURES FOR REVIEWING AND AMENDING THE CONTINGENCY PLAN**

[R 299.9607 and 40 CFR §264.54]

See Volume 1, Section A7.G.

FORM EQP 5111 Template

**A8: Traffic Information**

**(Volume 2)**

**See Volume 1**

**A8: Traffic Information**

**A9 - FACILITY LOCATION INFORMATION**

40 CFR §270.14(b)(11)

**(Volume 2)**

**See Volume 1**

**A9: Facility Location Information**

**A10: PERSONNEL TRAINING PROGRAM**

**(Volume 2)**

**See Volume 1**

**A10: Personnel Training Program**

FORM EQP 5111 Template

**A11: Closure and Postclosure Plan**

**(Volume 2)**

**See Volume 1**

**A11: Closure and Postclosure Plan**

FORM EQP 5111 TEMPLATE

**A12: CLOSURE AND POSTCLOSURE CARE COST ESTIMATES**

**(Volume 2)**

**(Hazardous Waste Units DLS-22)**

This document is an attachment to the Michigan Department of Environment, Great Lakes, and Energy's *Instructions for Completing Form EQP 5111, Operating License Application Form for Hazardous Waste Treatment, Storage, and Disposal Facilities*. See Form EQP 5111 for details on how to use this attachment.

The administrative rules promulgated pursuant to Part 111, Hazardous Waste Management, of Michigan's Natural Resources and Environmental Protection Act, 1994 PA 451, as amended (Act 451), R 299.9702 and Title 40 of the Code of Federal Regulations (CFR), Part 264, Subpart H, establishes requirements for providing financial assurance for closure and, if necessary, postclosure care. Specifically, R 299.9702(1) requires the preparation of associated cost estimates. This license application template addresses the requirement for preparing a closure cost estimate and, if necessary, a postclosure care cost estimate. The cost estimates provided in this attachment are based on the closure and postclosure care activities detailed in Template A11. All references to 40 CFR citations specified herein are adopted by reference in R 299.11003.

This template is organized as follows:

**A12.A CLOSURE COST ESTIMATE**

**A12.A.1 Closure Cost Estimate Breakdown**

Table A12.A.1	Facility Closure Cost Estimate Breakdown by Unit
Table A12.A.2	Container Storage Areas Closure Cost Estimate
Table A12.A.3	Tank Systems Closure Cost Estimate
Table A12.A.4	Miscellaneous Units Closure Cost Estimate

**A12.B POSTCLOSURE COST ESTIMATE**

*(Since no hazardous waste will be left behind at closure, the following template sections are not applicable)*

**A12.A CLOSURE COST ESTIMATE**  
[R 299.9702(1) and 40 CFR §264.142]

Reference is made to Volume 1, Section A12.A, with the addition of the following information specific to DLS-22:

The cost closure information found in Tables A12.A.2, A12.A.3, and A12.A.4, below, shall be cumulative with those tables found in Volume 1 and any other volumes whose hazardous waste management units are approved and operational.

**A12.A.1 Closure Cost Estimate Breakdown**

**Table A12.A.1 Facility Closure Cost Estimate Breakdown by Unit\***

1.	Container Storage Areas	\$ TBD
2.	Tank Systems	\$ NA
3.	Surface Impoundments	\$ NA
4.	Waste Piles	\$ NA
5.	Landfills	\$ NA
6.	Incinerators	\$ NA
7.	Miscellaneous Units	\$ NA
8.	Boilers and Industrial Furnaces	\$ NA
<b>Total Closure and Postclosure Care Estimate</b> (add lines 1 through 11)		\$ TBD

\* Tables not included at this time for Land Treatment Units, Drip Pads, and Hazardous Waste Munitions and Explosives Storage Units

**Table A12.A.2 Container Storage Areas Closure Cost Estimate**

<b>Activity</b> If certain activities are not expected to be performed, enter "NA" as the Estimated Cost.		<b>Estimated Cost</b>
1.	Demolition and Removal of Containment	\$ NA
2.	Removal of Soil	\$ NA
3.	Backfill	\$ NA
4.	Decontamination	\$ TBD
5.	Sampling and Analysis	\$ TBD
6.	Monitoring Well Installation	\$ NA
7.	Transportation	\$ TBD
8.	Treatment and Disposal of Waste Inventory and Other Cleanup Wastes	\$ TBD
9.	<b>Subtotal of Closure Costs</b> (Add lines 1 through 8)	\$ TBD
10.	Engineering Expenses (typically 10% of closure costs, excluding certification of closure.)	\$ TBD
11.	Certification of Closure	\$ TBD
12.	<b>Subtotal</b> (Add Lines 9, 10, and 11)	\$ TBD
13.	Contingency Allowance (typically 20% of closure costs, engineering expenses, and cost of certification of closure.)	\$ TBD
14.	Landfill Closure	\$ NA
<b>Total Closure Cost</b> (Add Lines 12, 13, and 14)		\$ TBD

**Table A12.A.3 Tank Systems Closure Cost Estimate**

Not applicable to hazardous waste units DLS-22

**Table A12.A.4 Miscellaneous Units Closure Cost Estimate**

Not applicable to hazardous waste units DLS-22



FORM EQP 5111 TEMPLATE

**A13: Topographical Map**

**(Volume 2)**

**See Volume 1**

**A13: Topographical map**

**A14: LIABILITY MECHANISM**

40 CFR §270.14(b)(17)

**(Volume 2)**

*To Be Determined*

**A15: FINANCIAL ASSURANCE INSTRUMENT**

40 CFR §270.14(b)(17)

**(Volume 2)**

*To Be Determined*

**B1: STATUS OF COMPLIANCE WITH OTHER FEDERAL LAWS**

40 CFR §270.14(b)(20)

**(Volume 2)**

**See Volume 1**

**B1: Status of Compliance With Other Federal Laws**

FORM EQP 5111 TEMPLATE

**B2: CORRECTIVE ACTION INFORMATION**

**(Volume 2)**

**See Volume 1**

**B2: Corrective Action Information**

FORM EQP 5111 Template

**B3: HYDROGEOLOGICAL REPORT**

**(Volume 2)**

**See Volume 1**

**B3: Hydrogeological Report**

FORM EQP 5111 Template

**B4: ENVIRONMENTAL ASSESSMENT**

**(Volume 2)**

**See Volume 1**

**B4: Environmental Assessment**

**B5: ENVIRONMENTAL MONITORING PROGRAMS**

**(Volume 2)**

***As Recommended***



**B6: ENGINEERING PLANS**

**(Volume 2)**

**Index of Attachments**

<b>ATTACHMENT</b>	<b>DESCRIPTION</b>
<b>B6-220.0</b>	<b>Sheet Index DLS-22 South Loading Docks</b>
<b>B6-220.1</b>	<b>Drawing C001, Blueprint 21084MC001.dwg Site Development Plan / DLS-22</b>
<b>B6-220.2</b>	<b>Drawing A101, Blueprint 21084MA101.dwg DLS-22 Floor Plan</b>
<b>B6-220.3</b>	<b>Drawing A201, Blueprint 21084MA201.dwg DLS-22 Exterior Elevations</b>

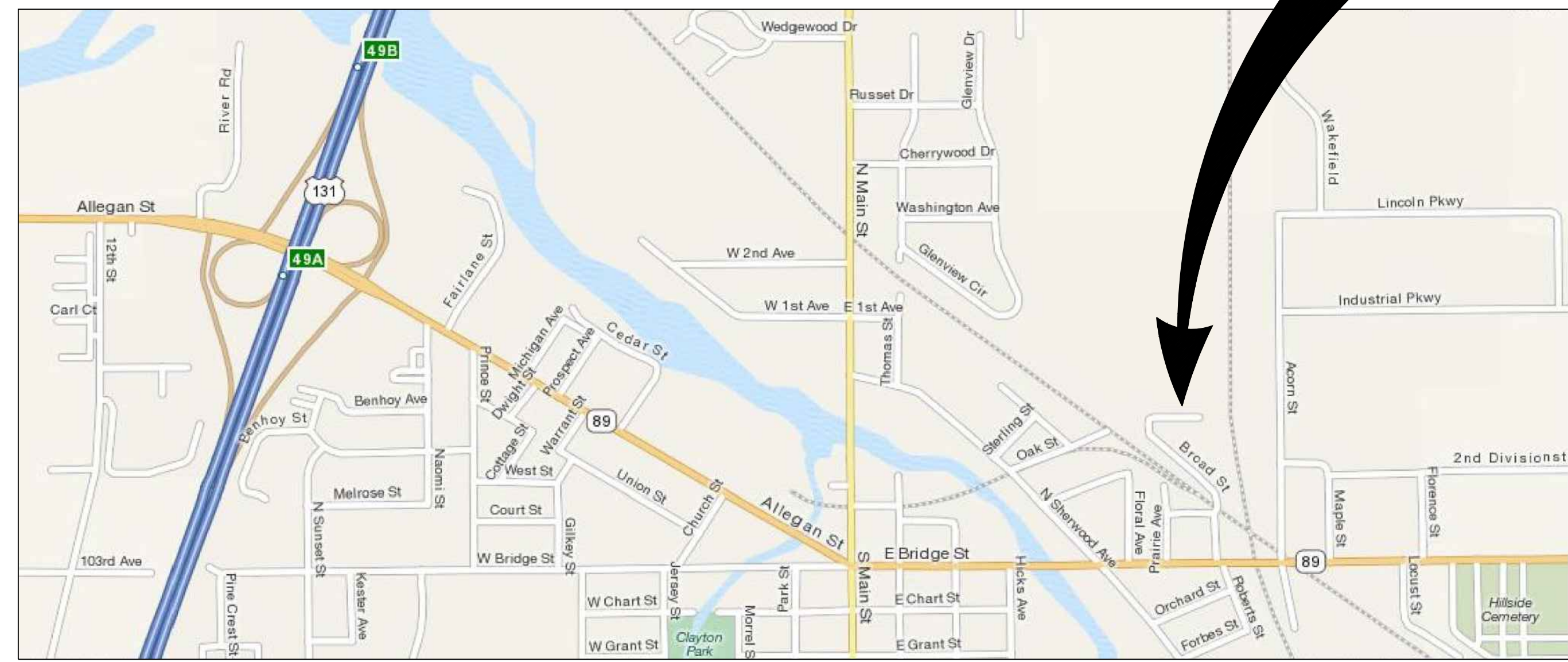
# DLD Environmental Services, Inc Phase 1 - DLS 22 South Loading Docks

Broad Street, Plainwell, Michigan 49080

September 8, 2022 for State Submittal

DLD Environmental Services, Inc  
Phase 1 - DLS 22 South Loading Docks  
Broad Street  
Plainwell, Michigan 49080

**PROJECT  
LOCATION**

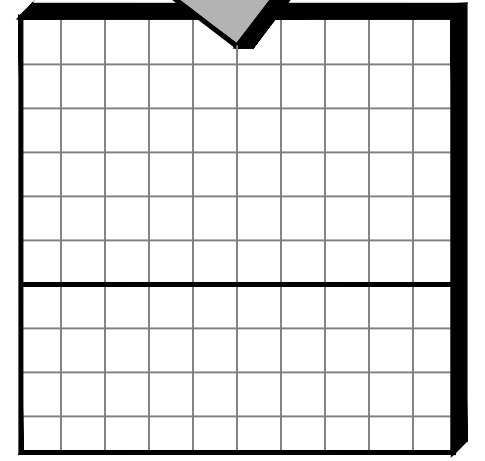
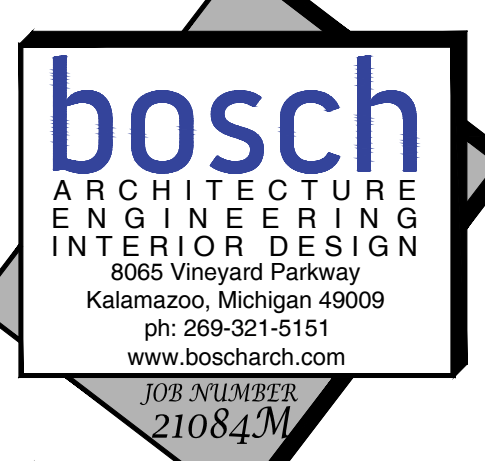
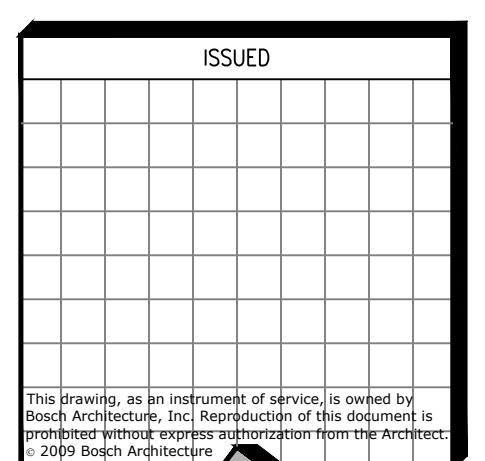
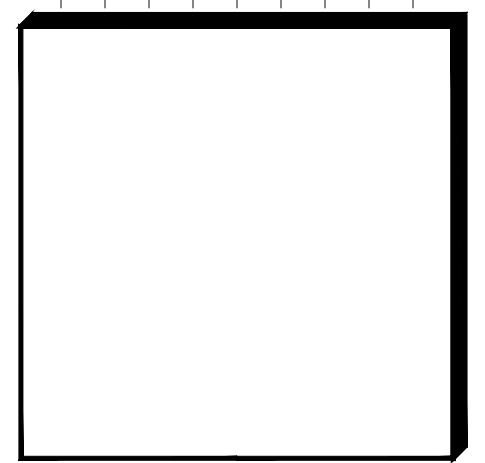


 **LOCATION MAP**  
NOT TO SCALE

### SHEET INDEX

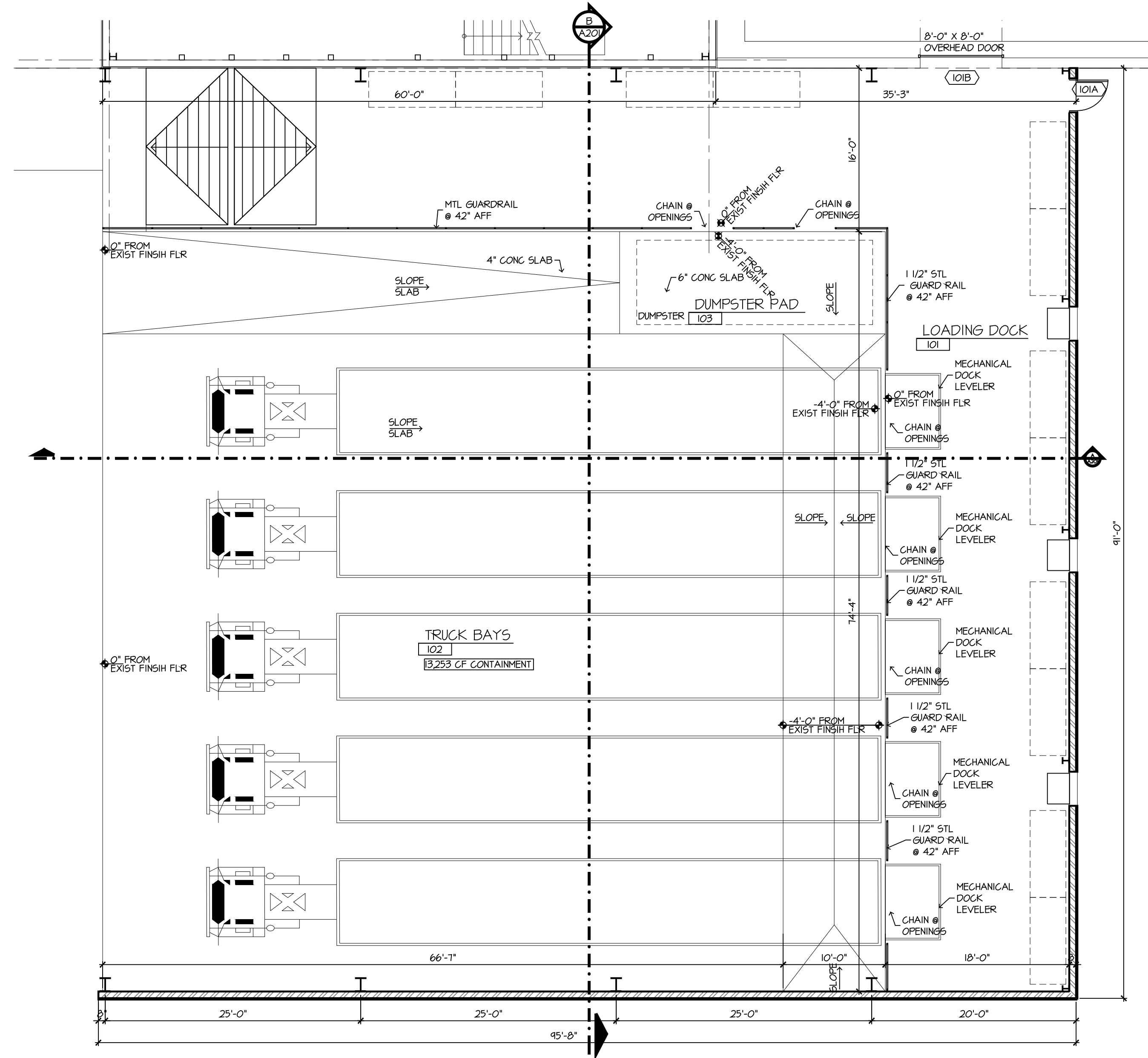
#### COVER SHEET + INDEX

- C001      *SITE DEVELOPMENT PLAN*
- A101      *FLOOR PLAN*
- A150      *DOOR + ROOM FINISH SCHEDULES*
- A201      *EXTERIOR ELEVATIONS + BUILDING SECTION +  
DETAILS*





# Attachment B6-220.2



**FLOOR PLAN**  
SCALE: 1/8" = 1'-0"

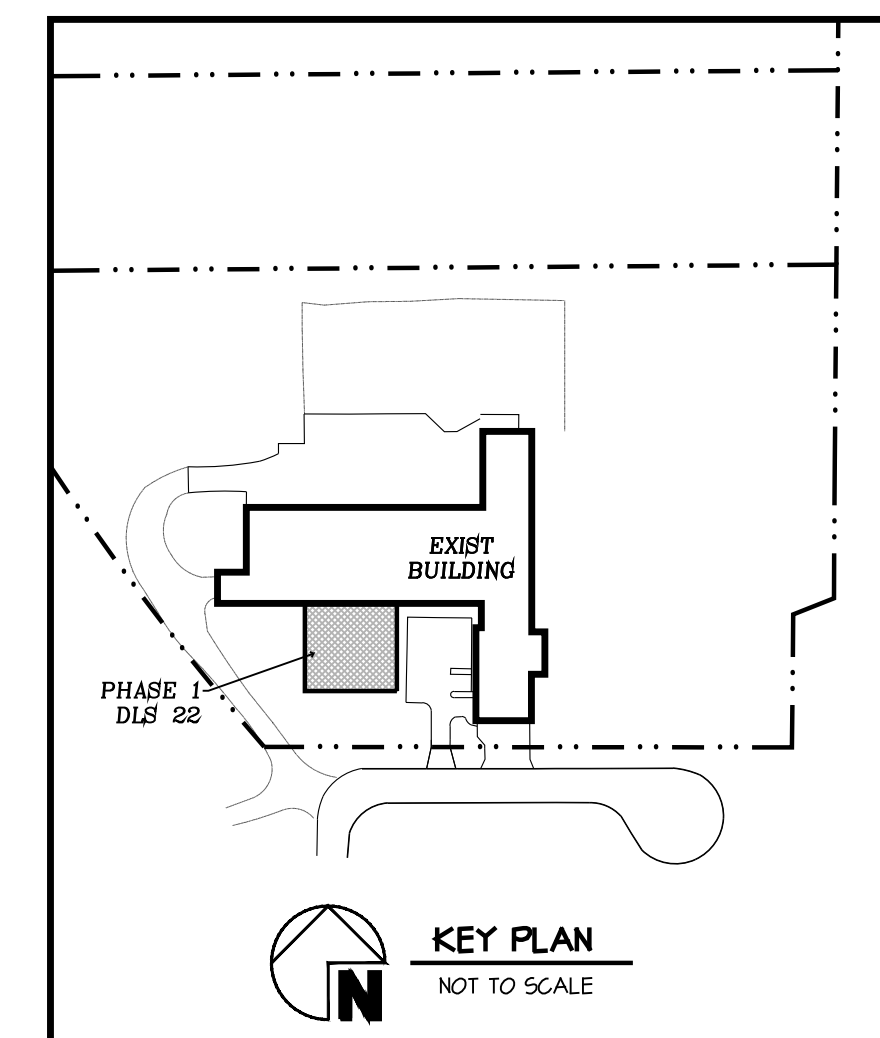
**GENERAL NOTES:**

1. ALL CUTTING AND PATCHING SHALL BE BY THE TRADE INVOLVED IN THE WORK.
2. SEE WALL KEY FOR WALL CONSTRUCTION.
3. VERIFY ALL DIMENSIONS IN THE FIELD BEFORE ORDERING ANY MATERIALS.
4. PROVIDE SOLID WOOD BLOCKING @ DOORS, CABINETS, SHELVING, BORROWED LITES, GRAB BARS, AND BEHIND DOOR STOPS, ETC.
5. ALL DIMENSIONS ARE NOMINAL TO FINISHED SURFACES UNLESS NOTED OTHERWISE.
6. THE CONTRACTOR SHALL VISIT THE SITE AND EXAMINE THE PREMISES.
7. IT IS THE RESPONSIBILITY OF THE CONTRACTORS TO OBTAIN CLARIFICATION OF ANY DISCREPANCIES.
8. ALL FIRE EXTINGUISHERS TO BE FINAL PLACED BY THE LOCAL FIRE MARSHAL.

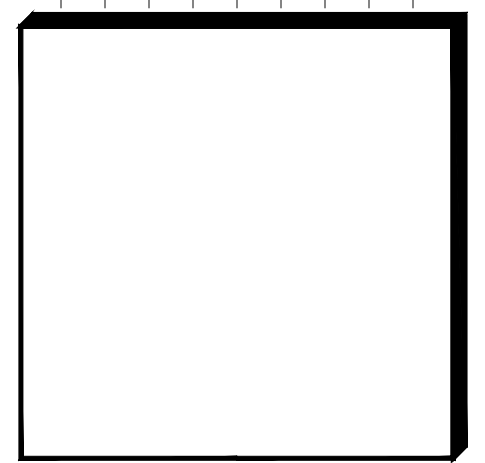
FOAM FIRE SUPPRESSION SYSTEM TO BE INSTALLED PER CODE THROUGH OUT TRUCK BAYS AND FENCED TRUCK BAYS AREA.

**WALL TYPES:**

- EXTERIOR NEW**
1. EXISTING WALL TO REMAIN RESKIN AS REQ.
  2. MTL PURLINS W/ 1 1/2" MTL SIDING ON EXTERIOR.
  3. MTL PURLINS W/ 1 1/2" MTL SIDING ON INTERIOR TO 1'-4" AFF AND OPEN ABOVE. 1 1/2" MTL SIDING ON EXTERIOR FULL HGT.
- INTERIOR NEW**
4. 8" STANDARD CMU TO 10'-0" AFF W/ 3-1/2" MTL STUDS @ 16" O.C. + MTL PANELS ON TRUCK BAY SIDE W/ 8" CONC. COL.
  5. 3 1/2" MTL STUDS @ 16" O.C. W/ 5/8" TYPE 'X' GIP DO ON BOTH SIDES. LOAD BEARING.



**DLD Environmental Services, Inc**  
 Phase 1 - DLS 22 South Loading Docks  
 Broad Street  
 Plainwell, Michigan 49080



ISSUED	
2022-09-08 FOR STATE REVIEW	

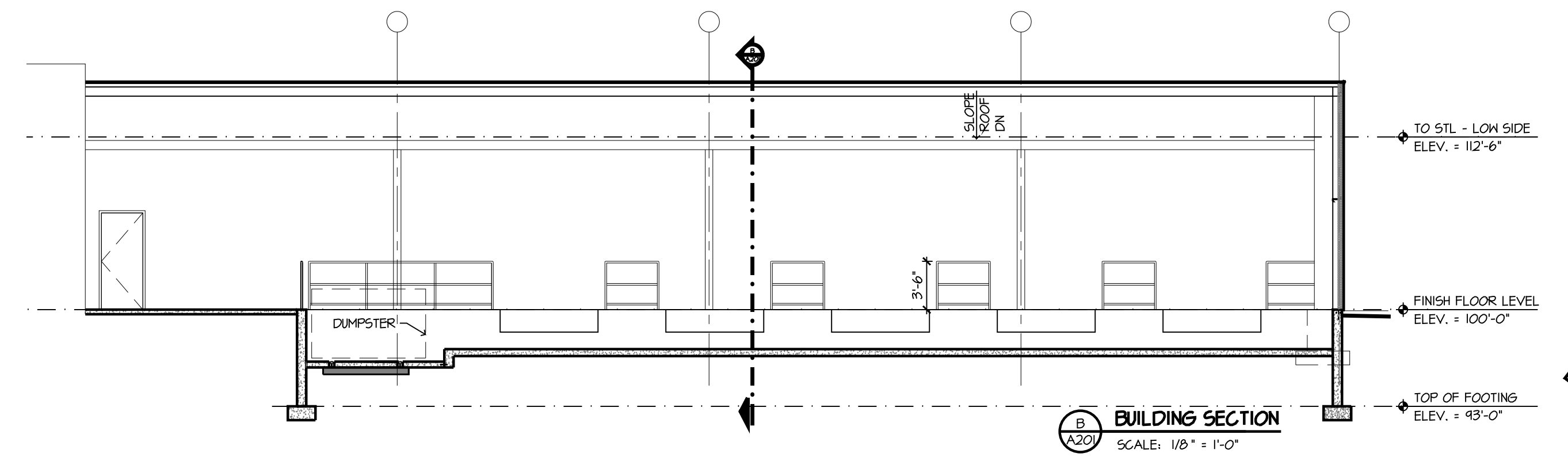
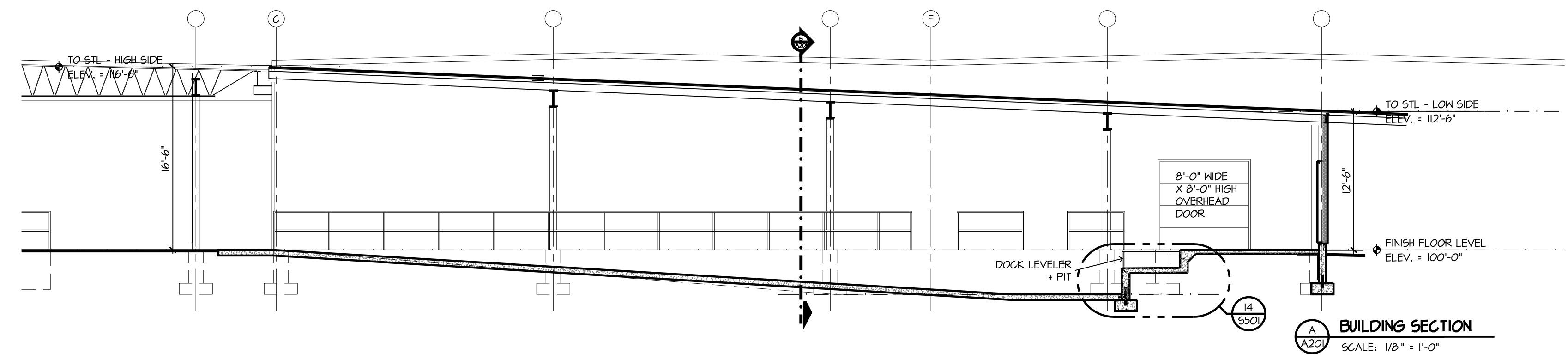
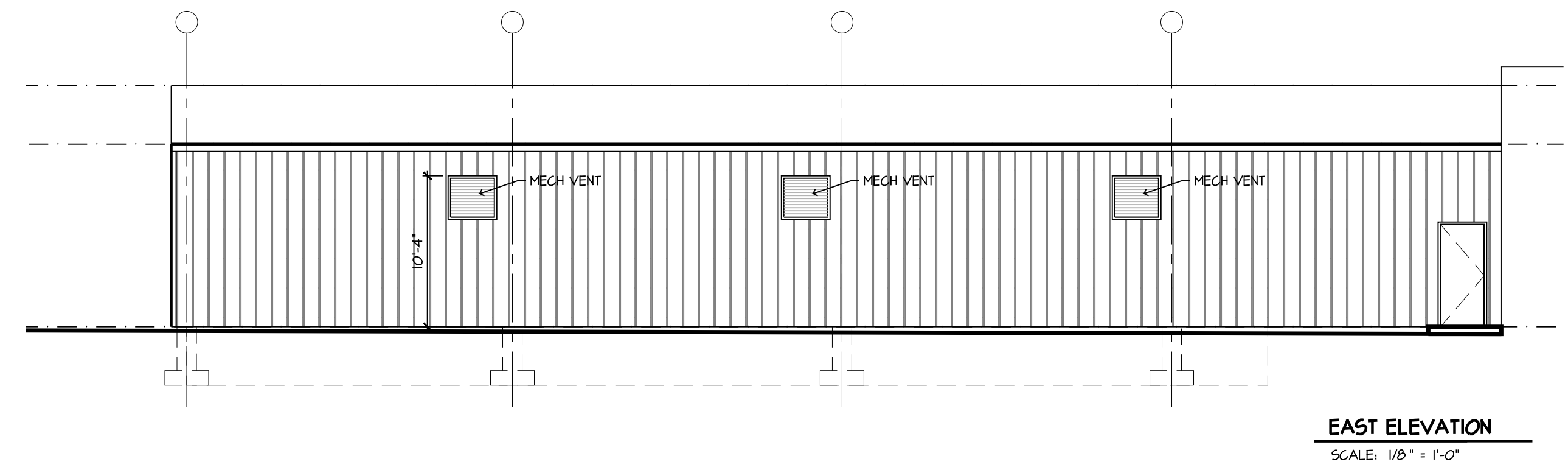
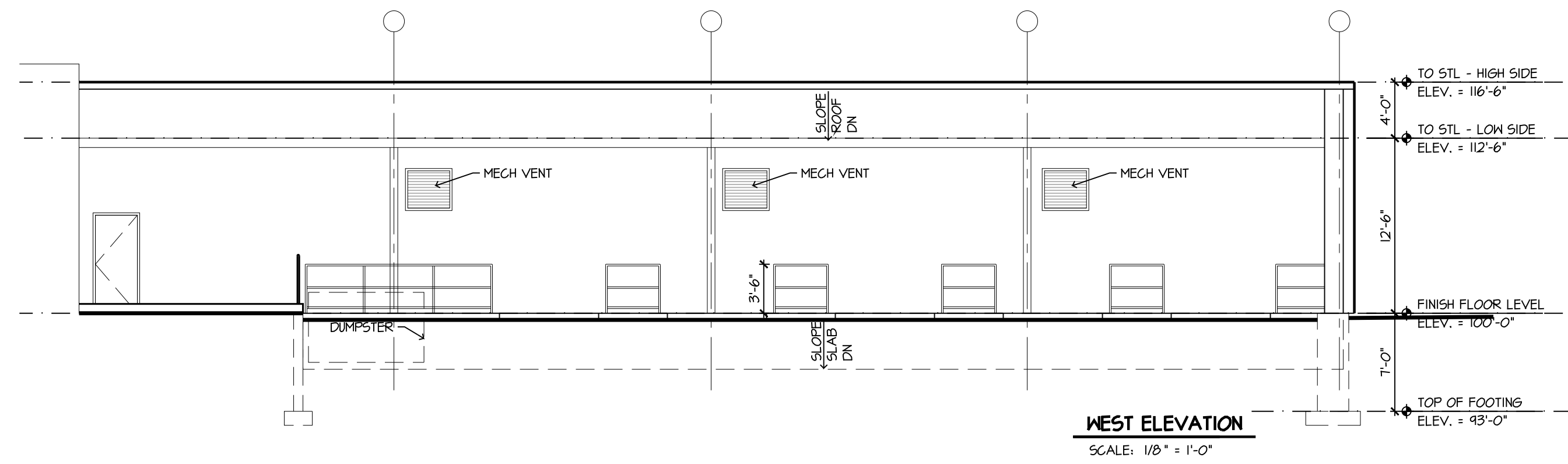
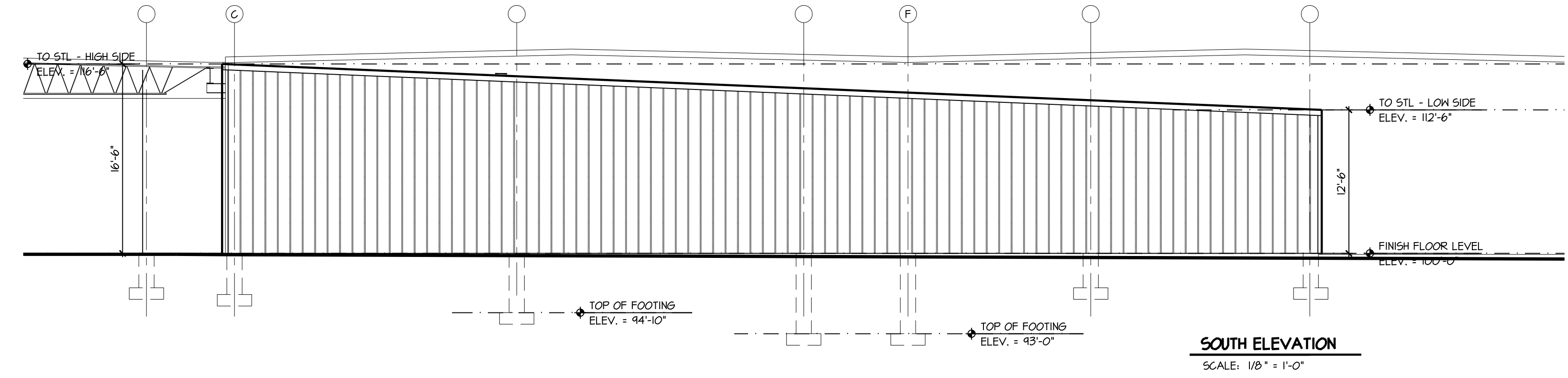
This drawing, as an instrument of service, is owned by Bosch Architecture, Inc. Reproduction of this document is prohibited without express authorization from the architect. © 2022 Bosch Architecture.

**bosch**  
 ARCHITECTURE  
 ENGINEERING  
 INTERIOR DESIGN  
 8065 Vineyard Parkway  
 Kalamazoo, Michigan 49009  
 ph: 269-321-5151  
 www.boscharch.com  
 JOB NUMBER:  
**21084M**

**FLOOR PLAN**

**A101**

# Attachment B6-220.3



DLD Environmental Services, Inc

Phase 1 - DLS 22 South Loading Docks

Broad Street

Plainwell, Michigan 49080



ISSUED
2022-09-08 FOR STATE REVIEW
This drawing, as an instrument of service, is owned by Bosch Architecture, Inc. Reproduction of this document is prohibited without express authorization from the architect. © 2022 Bosch Architecture.

**bosch**  
 ARCHITECTURE  
 ENGINEERING  
 INTERIOR DESIGN  
 8065 Vineyard Parkway  
 Kalamazoo, Michigan 49009  
 ph: 269-321-5151  
 www.boscharch.com  
 JOB NUMBER  
 21084M

EXTERIOR ELEVATIONS
A201

FORM EQP 5111 TEMPLATE

**C1: USE AND MANAGEMENT OF CONTAINERS**

**(Volume 2)**

This document is an attachment to the Michigan Department of Environment, Great Lakes, and Energy's *Instructions for Completing Form EQP 5111, Operating License Application Form for Hazardous Waste Treatment, Storage, and Disposal Facilities*. See Form EQP 5111 for details on how to use this attachment.

R 299.9614 of the administrative rules promulgated pursuant to Part 111, Hazardous Waste Management, of Michigan's Natural Resources and Environmental Protection Act, 1994 PA 451, as amended (Act 451); R 29.4101 to R 29.4505 promulgated pursuant to the provisions of the Michigan Fire Protection Act, PA 207, as amended (Act 207); and Title 40 of the Code of Federal Regulations (CFR) §§270.14(d), 270.15, and Part 264, Subpart I, establish requirements for the use and management of containers. All references to 40 CFR citations specified herein are adopted by reference in R 299.11003.

This license application template addresses requirements for the use and management of containers at the DLD Environmental Services, Inc.. (DLD) facility in Plainwell, Michigan. This template addresses the condition of containers, compatibility of waste with containers, management of containers, inspections, containment, special requirements for ignitable or reactive waste, special requirements for incompatible wastes, and closure.

*(Check as appropriate)*

Applicant for Operating License for Existing Facility:

R 299.9614 use and management of containers

Applicant for Operating License for New, Altered, Enlarged, or Expanded Facility:

R 299.9614 use and management of containers

## Table of Contents

This template is organized as follows:

### INTRODUCTION

### C1.A DESCRIPTION OF CONTAINERS

### C1.B CONDITION OF CONTAINERS

### C1.C COMPATIBILITY OF WASTE WITH CONTAINERS

### C1.D MANAGEMENT OF CONTAINERS

### C1.E INSPECTIONS

### C1.F CONTAINMENT

#### C1.F.1 Secondary Containment System Design and Operation for Containers with Free Liquids

- C1.F.1(a) Requirement for Base or Liner
- C1.F.1(b) Containment System Drainage
- C1.F.1(c) Containment System Capacity
- C1.F.1(d) Control of Run-on
- C1.F.1(e) Removal of Liquids from Containment System

#### C1.F.2 Secondary Containment System Design and Operation for Containers with No Free Liquids

- C1.F.2(a) Containment System Drainage
- C1.F.2(b) Container Management

### C1.G SPECIAL REQUIREMENTS OF IGNITABLE OR REACTIVE WASTE

### C1.H SPECIAL REQUIREMENTS FOR INCOMPATIBLE WASTES

### C1.I CLOSURE

## INTRODUCTION

Reference is made to Volume 1, Attachment "Introduction"

### **C1.A DESCRIPTION OF CONTAINERS**

[R 299.9614 and 40 CFR §264.171]

Reference is made to Volume 1, Attachment C1.A

### **C1.B CONDITION OF CONTAINERS**

[R 299.9614 and 40 CFR §264.171]

Reference is made to Volume 1, Attachment C1.B

### **C1.C COMPATIBILITY OF WASTE WITH CONTAINERS**

[R 299.9614 and 40 CFR §264.172]

Reference is made to Volume 1, Attachment C1.C

### **C1.D MANAGEMENT OF CONTAINERS**

[R 299.9614 and 40 CFR §264.173]

Reference is made to Volume 1, Attachment C1.D

### **C1.E INSPECTIONS**

[R 299.9614 and 40 CFR §264.174]

Reference is made to Volume 1, Attachment C1.E

### **C1.F CONTAINMENT**

[R 299.9614 and 40 CFR §264.175 and 270.15]

Note that the primary purpose of the DLS-22 containment area is to function as a dock bay for loading and unloading vehicles. Secondary containment is provided as a precaution in the event that a vehicle is carrying a leaky or ruptured container.

#### **C1.F.1 Secondary Containment System Design and Operation for Containers with Free Liquids**

[R 299.9614 and 40 CFR §264.175(a) and 270.15(a)]

Detailed design drawings for the secondary containment systems and container storage areas are provided in Volume 2, Section B6.



**C1.F.1(a) Requirement for Base or Liner**  
[R 299.9614 and 40 CFR §264.175(b)(1) and 270.15(a)(1)]

Reference is made to Volume 1, Attachment C1.F.1(a)

**C1.F.1(b) Containment System Drainage**  
[R 299.9614 and 40 CFR §264.175(b)(2) and 270.15(a)(2)]

Reference is made to Volume 1, Attachment C1.F.1(b)

**C1.F.1(c) Containment System Capacity**  
[R 299.9614 and 40 CFR §§264.175(b)(3) and 270.15(a)(3)]

Containment area DLS-22 will be limited to a maximum of 95,000 gallons of hazardous waste. Following regulation 40 CFR §264.175(b)(3), this area would require a total containment capacity of 9,500 gallons (10% of the volume of containers). The total containment capacity for DLS-22 is 99,140 gallons, which exceeds what is required. (See Volume 2, Attachment B6-220.2)

**C1.F.1(d) Control of Run-on**  
[R 299.9614 and 40 CFR §§264.175(b)(4) and 270.15(a)(4)]

Reference is made to Volume 1, Attachment C1.F.1(d)

**C1.F.1(e) Removal of Liquids from Containment System**  
[R 299.9614 and 40 CFR §264.175(b)(5) and 270.15(a)(5)]

Reference is made to Volume 1, Attachment C1.F.1(e)

**C1.F.2 Secondary Containment System Design and Operation for Containers with No Free Liquids**  
[R 299.9614 and 40 CFR §264.175 and 270.15(b)(1)]

Within DLS-22, DLD shall manage containers with no free liquids using the operating guidelines presented in Volume 2, Section C1.F.1.

**C1.F.2(a) Containment System Drainage**  
[R 299.9614 and 40 CFR §264.175 and 270.15(b)(2)]

Within DLS-22, DLD shall manage containers with no free liquids using the operating guidelines presented in Volume 2, Section C1.F.1.

**C1.F.2(b) Containment Management**  
[R 299.9614 and 40 CFR §264.175 and 270.15(b)(2)]

Within DLS-22, DLD shall manage containers with no free liquids using the operating guidelines presented in Volume 2, Section C1.F.1.

**C1.G SPECIAL REQUIREMENTS FOR IGNITABLE OR REACTIVE WASTE**  
[R 299.9614 and 40 CFR §264.176 and 270.15(b)(2)]

Reference is made to Volume 1, Attachment C1.G

**C1.H SPECIAL REQUIREMENTS FOR INCOMPATIBLE WASTES**  
[R 299.9614 and 40 CFR §264.177(c) and 270.15(b)(2)]

Reference is made to Volume 1, Attachment C1.H

**C1.I CLOSURE**  
[R 299.9614 and 40 CFR §264.178]

Reference is made to Volume 1, Attachment C1.I

**C4: TREATMENT**  
**(Volume 2)**

**Table of Contents**

This template is organized as follows:

**C4. A LAB PACKING**

**C4.B COMMINGLING**

**C4.G STORAGE**

**C4: TREATMENT**  
(Volume 2)

**C4. A LAB PACKING**

Reference is made to Volume 1, Section C4.A.

**C4.B COMMINGLING**

Reference is made to Volume 1, Section C4.B.

**C4.G STORAGE**

See Volume 2, Attachment C1, Containers, for storage information.

FORM EQP 5111 Template

**C13: AIR EMISSIONS FROM EQUIPMENT LEAKS,  
TANKS, AND CONTAINERS**

**(Volume 2)**

**See Volume 1**

**C13: Air Emissions from Equipment Leaks,  
Tanks, and Containers**