



MICHIGAN DEPARTMENT OF
ENVIRONMENT, GREAT LAKES, AND ENERGY

Hazardous Waste Management Facility Operating License Renewal Application

Completeness Informational Meeting Dow Silicones Corporation (DSC)

Welcome




1

Welcome

Purpose of Meeting:

- Provide overview of facility's hazardous waste operations
- Outline the hazardous waste operating license renewal application review process
- Offer opportunity for questions and answers with panel of EGLE, Materials Management Division representatives



2

Introductions

Materials Management Division Staff:

- Rich Conforti, Supervisor, Engineering and Program Support Unit
- Daniel Dailey, Environmental Engineering Specialist
- Nate Erber, Geologist
- Trisha Confer, Inspector, Bay City District Office
- Ethan Israels, Inspector, Bay City District Office

3

EGLE

3

Agenda

Presentation:

- Regulatory Authority
- Facility Description
- Monitoring and Corrective Action
- License Conditions
- Renewal Application Process
- Compliance Summary

Question and Answer Session

Adjourn

4

EGLE

4

Regulatory Authority

Sources:

- Authorized program, federal delegation – ensure protection of human health and the environment
- Part 111, Hazardous Waste Management, Natural Resources and Environmental Protection Act, 1994 PA 451, as Amended, and its rules

Cradle-to-Grave Regulation:

- Generators
- Transporters
- Treatment, storage, and disposal facilities

5

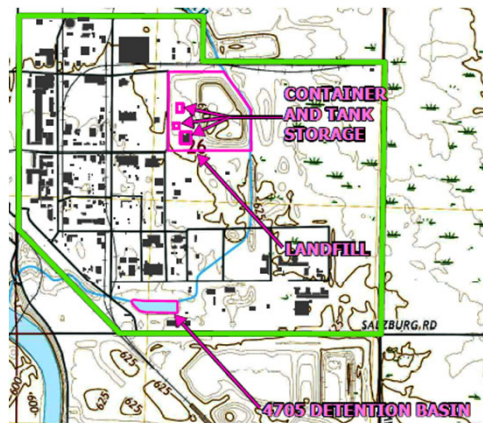
EGLE

5

Facility Description

Facility Location:

- 3901 South Saginaw Road, Midland
- West of Waldo Road
- Closest intersection is Salzburg Road and South Saginaw Road



6

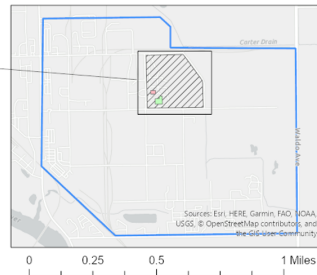
EGLE

6

Facility Description

Licensed portion of facility is separate from manufacturing

- Legend
- Item Layer
- 806 Tank Farm
 - 809 Container Storage Building
 - Landfill
 - Approximate Facility Boundary

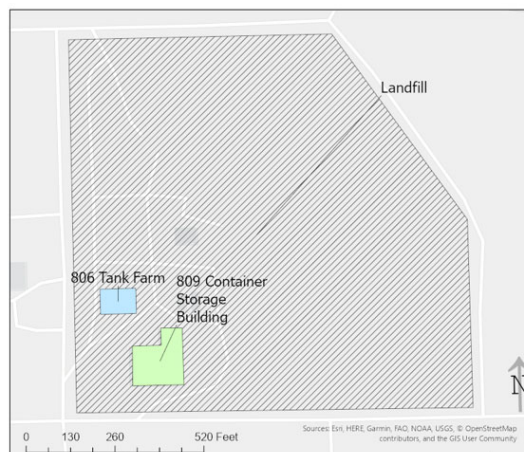


7

Facility Description

Exterior Layout:

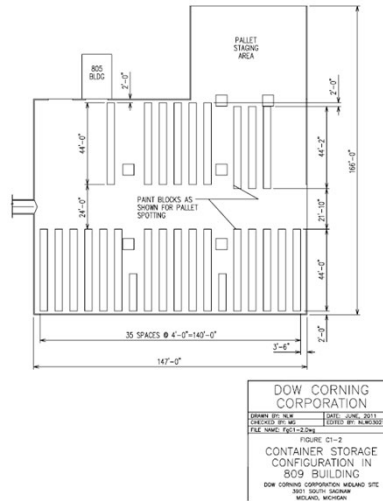
- Container storage completely indoors
- Tank storage outdoors with secondary containment
- Landfill liner and leachate collection system



8

Facility Description

- Indoor hazardous waste container storage layout
- Indoor unloading



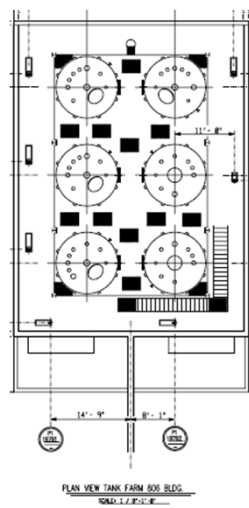
9

EGLE

9

Facility Description

Outdoor tanks in diked secondary containment



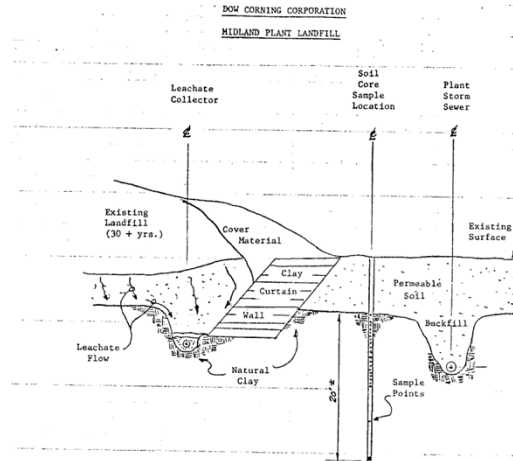
10

EGLE

10

Facility Description

Landfill disposal liner and leachate collection system



11

EGLE

11

Facility Description

Operations and Design Capacities:

- Container storage – 85,000 gallons
- Tank storage – 60,000 gallons
- Landfill disposal – 453 acre-feet

Captive Facility:

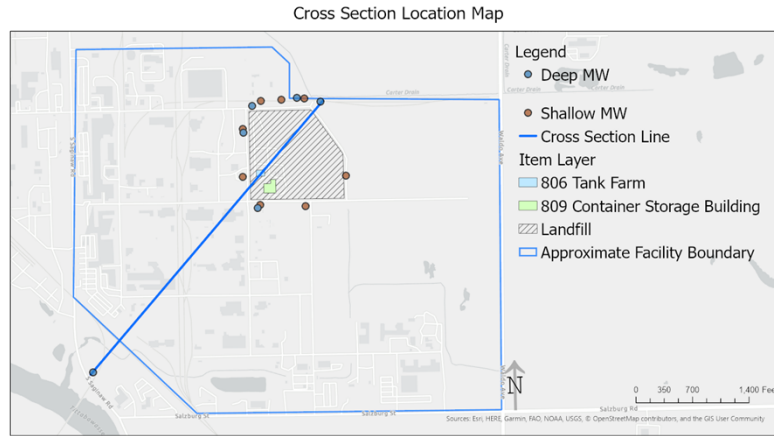
- Receives wastes from on-site generators and some off-site Dow-owned facilities.

12

EGLE

12

Monitoring and Corrective Action

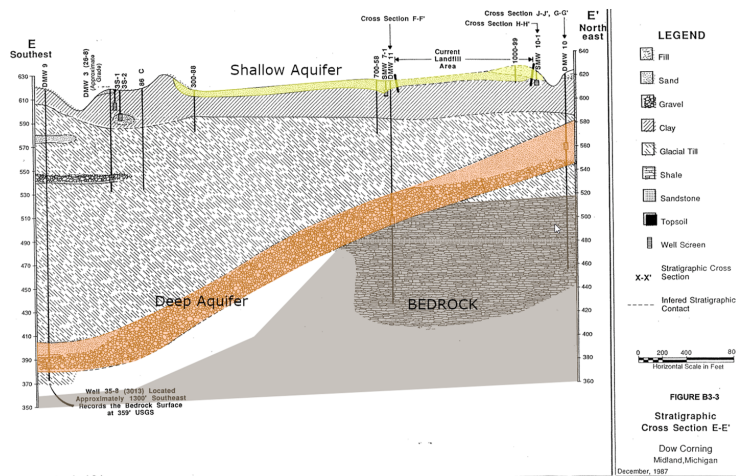


13

EGLE

13

Monitoring and Corrective Action

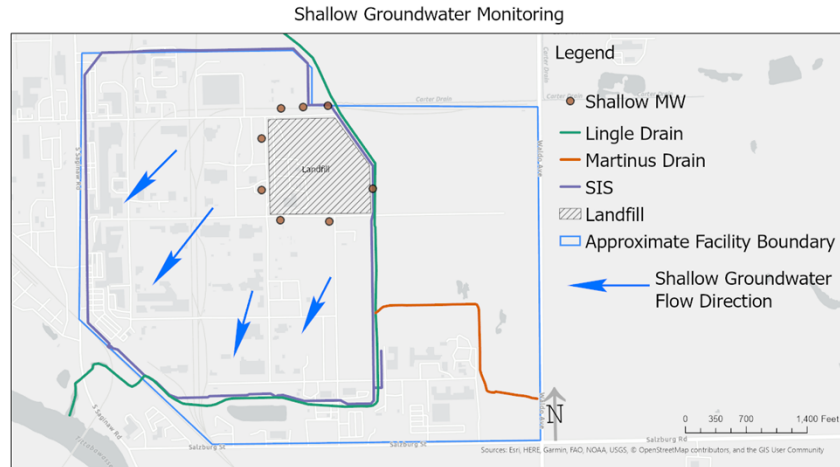


14

EGLE

14

Monitoring and Corrective Action

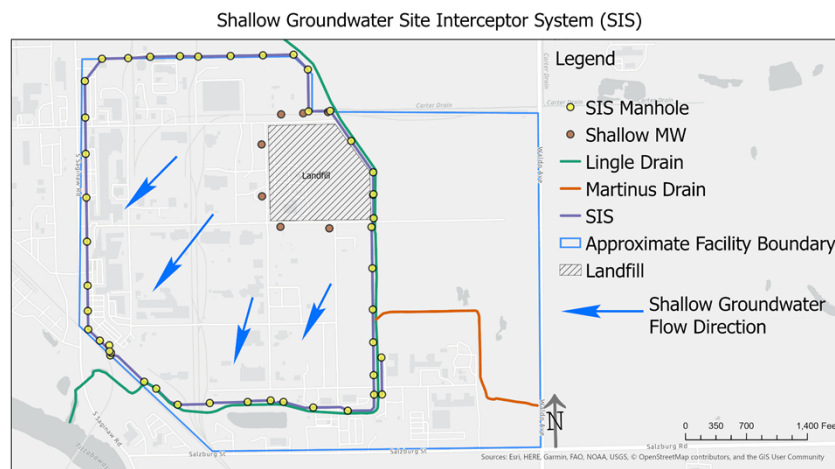


15

EGLE

15

Monitoring and Corrective Action

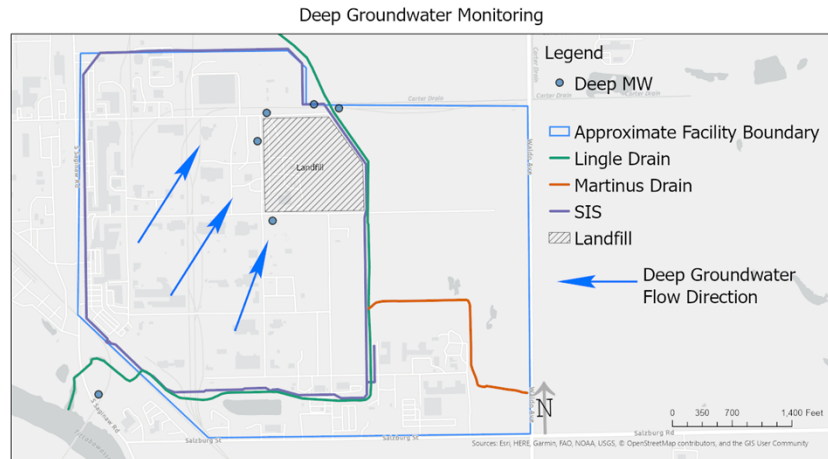


16

EGLE

16

Monitoring and Corrective Action

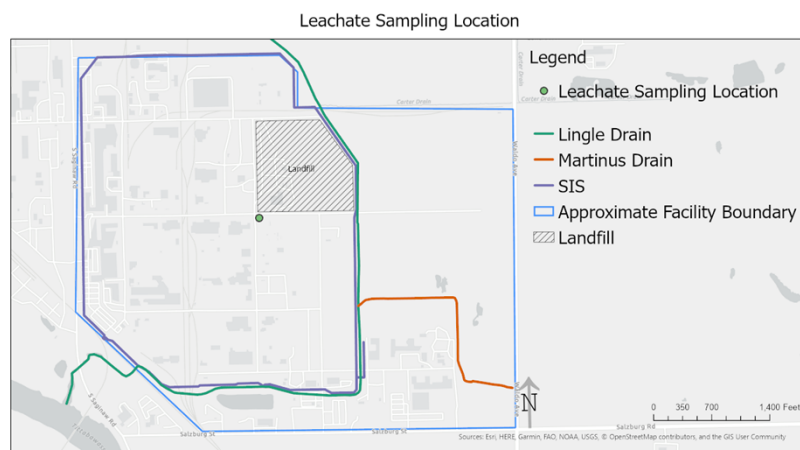


17

EGLE

17

Monitoring and Corrective Action

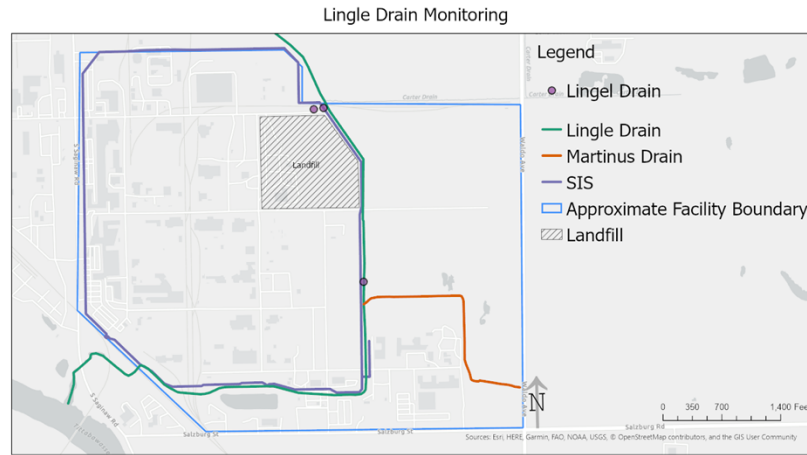


18

EGLE

18

Monitoring and Corrective Action

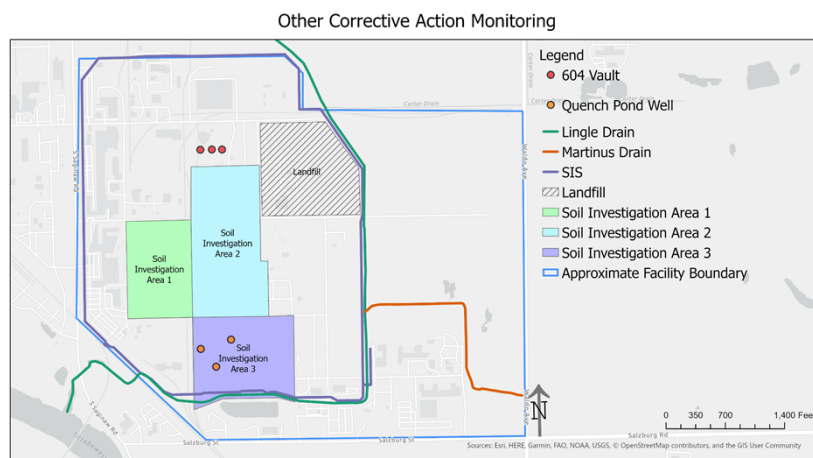


19

EGLE

19

Monitoring and Corrective Action

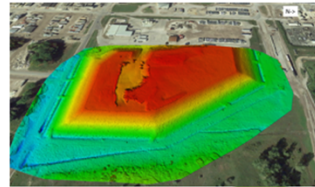


20

EGLE

20

Monitoring and Corrective Action



2

EGLE

21

License Requirements

General Conditions:

- Waste analysis
- Inspection schedule
- Personnel training
- Emergency preparedness and response
- Contingency plan
- Recordkeeping and reporting
- Closure plan

22

EGLE

22

License Requirements

Specific Conditions :

- Container management
- Tank management
- Landfill disposal
- Financial assurance
- Environmental monitoring
- Corrective action

23

EGLE

23

Application Review

Process:

- Submittal of license application
- Distribution to appropriate agencies and staff for review and input
- Completeness review and determination
- Public participation
 - Notification of receipt
 - Informational public meeting
- Ongoing opportunity for public engagement

24

EGLE

24

Application Review

Process:

- Project team facility visit(s)
- Technical review; revisions as necessary
- Public informational meeting and hearing on draft final license application decision
- Public comment period
- Responsiveness summary
- License denial/issuance, notice of final decision

25

EGLE

25

Compliance Summary

Licensing History:

- Initial operating license issued to Dow Corning Corporation in September 2000
- First renewal operating license issued to Dow Corning Corporation in September 2012
- Facility changed name to Dow Silicones Corporation on June 1, 2016
- Timely second renewal operating license application submitted March 2022 and allows continued operation under current license

26

EGLE

26

Compliance Summary

Quarterly Inspections:

- Evaluate compliance with license conditions and applicable regulations
- Inspections include visual inspection (tank systems, containment areas, containers, security, etc.) and record review (manifests, approvals, waste acceptance, inspection records, training, contingency plan, etc.)
- Issues identified are documented through violation notices or compliance communications

27

EGLE

27

Compliance Summary

Quarterly Inspections:

- Compliance issue resolution conducted through communication, documentation, follow up inspection, or consent order

Overall Facility Compliance:

- No outstanding violations
- Facility is currently in compliance

28

EGLE

28

Stay connected!

Go to Michigan.gov/EGLEConnect
to subscribe for updates on EGLE's
review of the Dow Silicones
hazardous waste license renewal
application.

29

EGLE

29

Michigan Department of
Environment, Great Lakes, and Energy

800-662-9278
Michigan.gov/EGLE

EGLE

Follow us at: Michigan.gov/EGLEConnect

30

EGLE

30