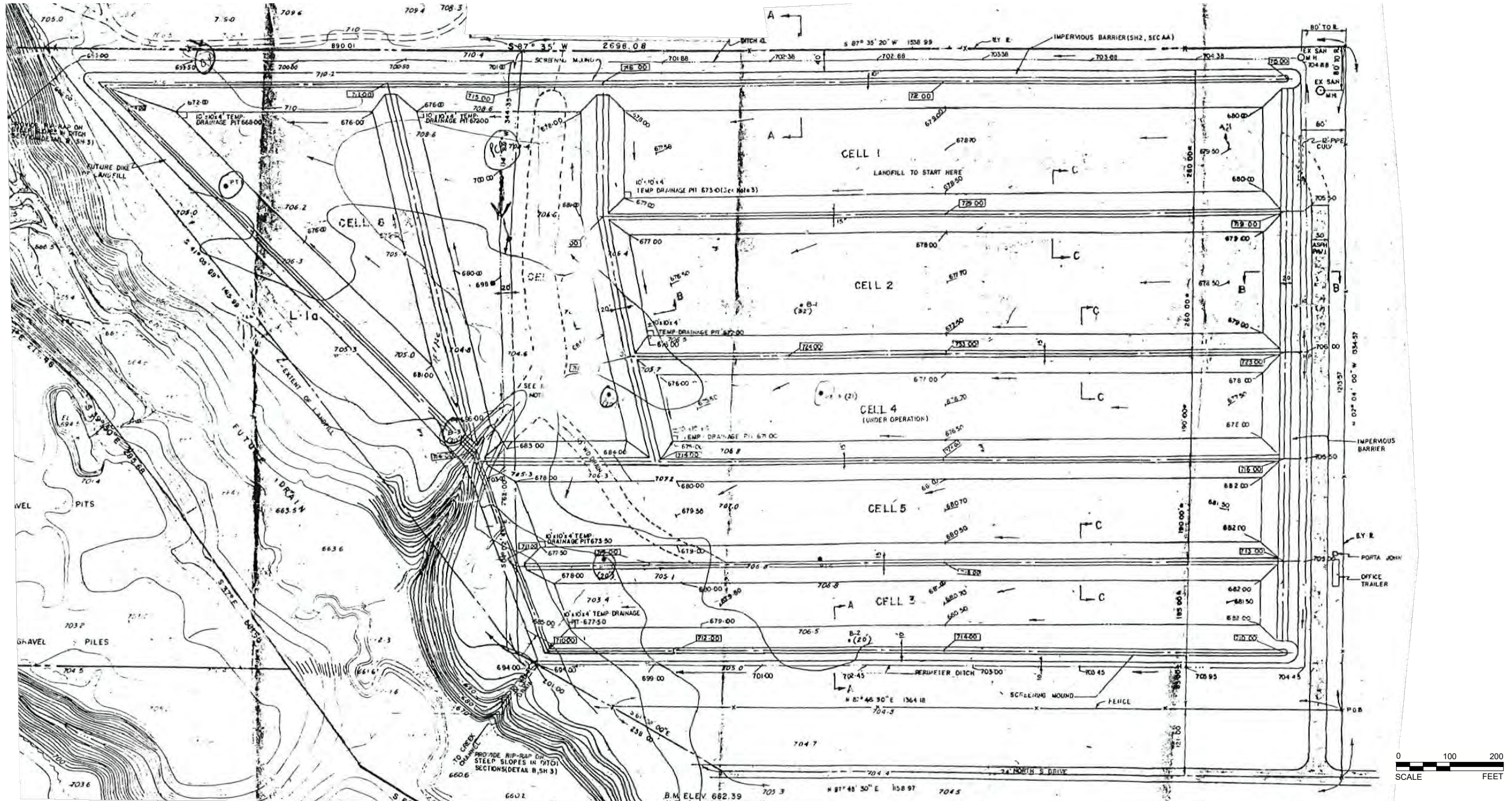


**ATTACHMENT 18**  
**CORRECTIVE ACTION**



Path: \\metro\landfill\Projects\146\Projects\146\Wayne Disposal\PRODUCTION\PROPOSED WELL LOCATIONS | File Name: 1655857H002.dwg

**REFERENCE**  
DRAWING IMAGE FROM METRO ENGINEERS; SANITARY LANDFILL LAYOUT & SITE-GRADING PLAN, DATED 4/3/75.

CLIENT  
**WAYNE DISPOSAL, INC.**  
BELLEVILLE, MICHIGAN

PROJECT  
**WDI SUPPLEMENTAL RFI REPORT**

TITLE  
**SITE 1 DESIGN**

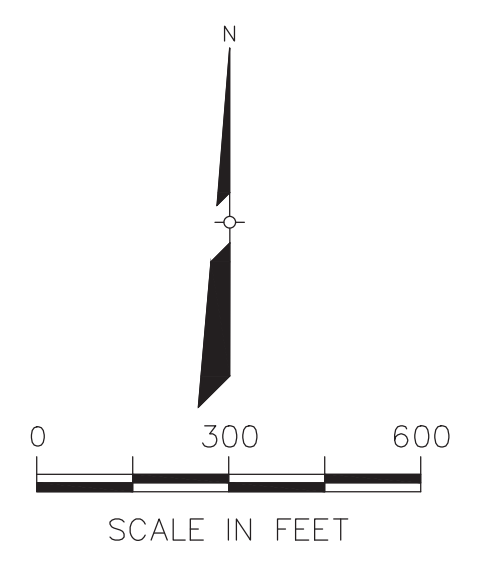
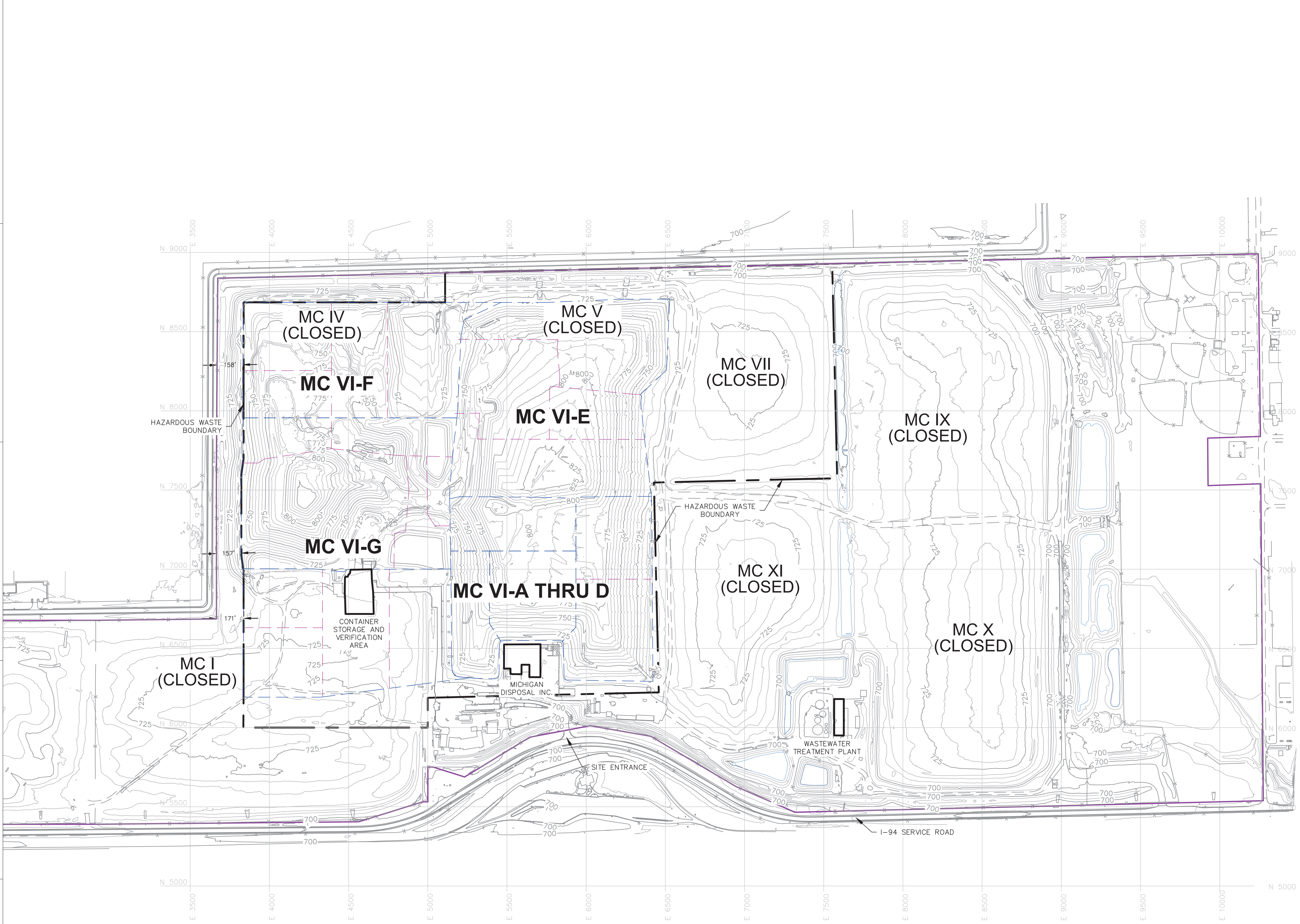
CONSULTANT	YYYY-MM-DD	2018-04-24
	PREPARED	DJC
	DESIGN	SCP
	REVIEW	ACN
	APPROVED	SCP

PROJECT No.	CONTROL	Rev.	FIGURE
1655857	1655857H002.dwg	0	6

IF THIS MEASUREMENT DOES NOT MATCH WHAT IS SHOWN, THE SHEET SIZE HAS BEEN MODIFIED FROM ANSI B

E  
D  
C  
B  
A

E



**LEGEND**

— 500 —	EXISTING MAJOR CONTOURS
— — —	EXISTING MINOR CONTOURS
- - - - -	PREVIOUSLY PERMITTED HAZARDOUS WASTE BOUNDARY
— — — — —	PROPERTY BOUNDARY
- - - - -	SUBCELL BOUNDARY
- - - - -	CELL BOUNDARY
- - - - -	CELL BOUNDARY (CLOSED)
— — — — —	POND

**NOTES:**

1. THE BASE MAP WAS CREATED USING AN AERIAL DRONE SURVEY PROVIDED BY FIRMATEK, LLC, DATED FEBRUARY 3, 2025.

**SURVEY CONTROL NOTE:**

THE HORIZONTAL GRID SYSTEM SHOWN IS BASED ON A LOCAL COORDINATE SYSTEM WITH A LOCAL VERTICAL DATUM. SITE-SPECIFIC CONTROL IS MAINTAINED THROUGH ESTABLISHED SURVEY MONUMENTS, WHICH SERVE AS THE REFERENCE POINTS FOR ALL CONSTRUCTION LAYOUT AND VERIFICATION ACTIVITIES.

**WAYNE DISPOSAL, INC. SITE NO. 2 - MASTER CELL VI-F&G**  
**VAN BUREN TOWNSHIP, WAYNE COUNTY, MICHIGAN**

**GENERAL SITE PLAN**

PROJECT NUMBER: 1218070017  
 SCALE: 1" = 300'  
 DRAWING NO: 02

REV	DATE	DESCRIPTION
M	08/15/25	RESPONSE TO EGLE COMMENTS 07/22/25
F	05/17/21	F1-F4 REVISIONS AND RESPONSE TO EGLE COMMENTS

CTI and Associates, Inc.  
 28001 Cabot Drive, Ste. 250  
 Novi, Michigan 48377  
 248.466.5100 (fax) 248.486.5050  
 www.cticompanies.com

DATE: 10/08/21  
 DESIGNED BY: LEH  
 DRAWN BY: WRG  
 CHECKED BY: CAB  
 APPROVED BY: XZ

This drawing was developed by CTI & Associates, Inc. (CTI). CTI will not be held liable for any errors or omissions on this drawing. The user of this drawing is advised to verify all information and conditions shown on this drawing. The user of this drawing is advised to verify all information and conditions shown on this drawing. The user of this drawing is advised to verify all information and conditions shown on this drawing.