

Identification of Responsible Parties

<u>Parties</u>	<u>Sector(s) Responsible</u>
Resource Conservation:	
Source or waste reduction	Business & State/Federal Government
Product reuse	" "
Reduced material volume	" "
Increased product lifetime	" "
Decreased consumption	" "
Resource Recovery Program:	
Composting	Local business & governments
Recycling	Waste haulers & local governments
Energy Production	NA
Volume Reduction Techniques:	Waste haulers & transfer stations
Collection processes:	Waste haulers & local governments
Transportation:	Waste haulers
Disposal areas:	
Processing plants	Facility owners/operators
Transfer stations	Facility owners/operators
Sanitary landfills	Facility owners/operators
Ultimate disposal area uses:	Facility owners/operators
Local responsibility for plan update monitoring & enforcement:	Kalamazoo County
Educational & informational programs:	Kalamazoo County

APPENDIX A

APPENDIX A
ADDITIONAL INFORMATION
REGARDING THE
SELECTED SYSTEM

Coordination Efforts

Ultimate responsibility for implementing the Solid Waste Management Plan rests with the Kalamazoo County Board of Commissioners as part of its duties of general governance. The County has charged the Department of Planning and Community Development on behalf of the Kalamazoo Metropolitan County Planning Commission to be cognizant of any pertinent ordinances or approved land use plans or wellhead protection plans within the County, and any pertinent restrictions or ongoing commitments contained in plans for air quality, water quality or waste management which may be required to meet State or Federal standards. Any County-level decisions affecting current or anticipated programs for solid waste management, air quality, water quality or land use planning will be made only after thorough consultation with the Department. In addition, should such decisions have an affect on an adjoining or nearby County, such coordination and communication will be directed through the Southwest Michigan Solid Waste Consortium, of which Kalamazoo County is a member.

Costs and Funding

The selected system is premised upon an enhancement of the current solid waste management system in the County. As such, the majority of the system is financed privately via a contractor (hauler) and a generator (residential, commercial, industrial, etc.). Therefore, it is expected that costs and funding will continue in the same manner. In regard to contractual arrangements between municipalities and contractors for collection of source separated materials and trash, it is anticipated that costs and funding (via special assessments/millages, etc.) will also continue in this fashion throughout the planning period. Lastly, funding for County staff positions and operation of the Household Hazardous Waste Collection facility will continue to be generated via the County's General Fund and local municipality contractual arrangements respectively, during the planning period.

Evaluation Summary

The selected system (Alternate System 2) was previously evaluated along with the other alternate systems in the Data Base portion of the Plan document. The following provides a summary of the advantages and disadvantages of the selected system:

Advantages

- Continuation of accepted local waste reduction programs
- Enhancement of waste reduction programs
- Continuity of overall system

Disadvantages

- Reliance on exportation and out-county sanitary landfills

APPENDIX B

APPENDIX B

NON-SELECTED SYSTEMS

Evaluation Criteria Descriptions

The following provides a description/definition of each criteria used to evaluate the various systems identified in the Plan.

Conservation of Natural Resources

This parameter refers primarily to the recovery of energy and/or materials from the waste stream. Systems and/or components which are directed toward the reduction, reutilization, recycling and /or conversion of solid waste which in turn have a direct effect on the conservation of natural resources are scored in a positive fashion. Those that avoid such attempts are scored negatively.

Public Acceptability

A solid waste management system will only be a successful as one which the general public accepts and participates in. Public acceptability is often measured in terms of degree of change from the status quo. Are the proposed changes more or less convenient? Are the changes controversial? Typically, the most publicly acceptable components are the most convenient and vice versa.

Some changes for the most part, will have a direct effect (economic or otherwise) on the public. Therefore, systems/components which require little or no change or will have no negative impact on the part of the public received a positive score. Those systems instituting changes (which may be viewed as negative impositions) are rated in a negative manner.

Effects on Energy

A key factor that should be considered in any solid waste management system is energy consumption. This is significant since 80% of the cost of waste disposal is in transportation, which has a high rate of energy use. In contrast, there are many energy effects which can be considered indirect. For example, the energy difference it requires to create a new glass bottle from recycled glass versus one from virgin materials is significant.

Therefore, systems and components which encourage the reduction and/or recovery of energy, either directly or indirectly, are rated in a positive manner.

Those components which are energy inefficient are rated in a negative fashion.

Access to Transportation

This parameter refers to adequacy of the transportation systems in the County. Is the network of roads, etc., sufficient to accommodate the development and operation of solid waste transport process and disposal facilities? Due to the ten-year planning period, it will be assumed that the conditions of said network will remain sufficient throughout the planning period. Therefore, each system received an identical rating in this category.

Access to Land

In contrast to the previous parameter, accessibility to land is a more measurable term since land is a finite resource. However, a basic premise - one that assumes that the availability of land, particularly in large acreage quantities, will be less and less available as time goes on is needed before the systems and components are rated.

Therefore, systems and components which are "land" intensive, (i.e., those largely dependent upon the acquisition of significant amounts of land for processing/disposal of solid waste, particularly in the long-range, are rated in a negative fashion. Those systems/components which minimize the use of land for any phase of the solid waste management process are rated in a neutral or positive manner.

Economic Feasibility

The economic feasibility of any solid waste management system is primarily dependent upon the capital, operation and maintenance costs of its components. Will the proposed system cost more than the present system? What, if any, revenues will be generated? What cost savings (short or long-term) will result from the proposed system? Are markets readily available for the sale of recovered materials and/or energy?

In general, economic feasibility can be summed up by the following question: Is the cost of the system/components realistically affordable for the community?

This question will be answered differently in each and every community. What may be affordable in one community may not be in another. Moreover, if solid waste is a major issue or problem in a community, economic feasibility may not even be a significant concern.

It should also be emphasized that certain components of an overall system may be more economically feasible than others. Some may actually increase or decrease costs, while others may break even.

For purposes of the analysis of this parameter, each system is evaluated on an overall basis and given a single rating. The rating will, however, take into account the positive or negative economics of each component of the system.

Individual components which are anticipated either to generate a surplus revenue after costs, or reduce costs, will be rated in a positive scoring fashion. Those components which are predicted to either increase costs and/or result in more costs than revenues, are rated in a negative manner. Finally, those components which do not have a significant impact on costs one way or another (increase versus decrease) are rated with a neutral score. The individual component scores are then aggregated to determine a net score for the overall system.

Technical Feasibility

Technical feasibility relates primarily to the practicality of the system's mechanical operations. Have components been tested and proven? Are the components reliable? Is the system compatible with the waste stream characteristics and quantities? Will the operation of a component(s) require specially trained personnel.

Technical feasibility, as indicated, primarily affects the operational function of the system. As such, systems which propose a very simple, tried and proven component are rated at the positive end of the scale. In contrast, those systems which would be considered experimental in nature, are placed at the negative end of the scale. It should be noted that most proposed systems will contain components which incorporate some degree of each element (proven versus experimental) and are thus rated on an aggregate basis.

Environmental Impact

There are environmental impacts inherent in every solid waste management system. Some impacts are minimal, while others border on disastrous. Moreover, environmental impacts can also range from direct to indirect. Environmental impacts can affect the quality of our air and water (surface and subsurface) resources, as well as noise standards. Severe negative environmental impact(s) can result in serious effects upon a community's public health.

It should be noted, however, that environmental impacts can be minimized via proper design, construction and operation of a solid waste facility/program. Such impacts can further be minimized by developing/implementing alternative methods of solid waste management.

Therefore, for purposes of rating systems according to this parameter, solid waste management systems/components which appear or have tested and which minimize or even eliminate negative environmental impacts are rated in a positive manner. Other systems/components which may result in negative impacts are rated in a

moderate or neutral fashion. Those that result in definite negative impacts are scored as such.

Non-Selected System Descriptions

Alternate System No. 1

Alternate System No. 1 represents the status quo or present solid waste management system in Kalamazoo County. Over the last five years, the County has experienced significant growth in waste reduction methods, particularly via the introduction and incorporation of residential recycling as an integral part of the solid waste management system. With the exception of two (2) communities in the County, all residents have access to curbside recycling service. This is accomplished in a number of ways and frequencies of collection -- all services are provided by the private sector in conjunction with the public sector.

In addition to recycling services, the County has instituted several waste reduction services to the residential and business community through the provision of a Recycling Coordinator, a Household Hazardous Waste program and respective staffing and a Pollution Prevention program and its staff.

In response to the ban of yard waste in landfills, the private sector has responded with regular residential yard waste collection on a subscription basis. Several communities also contract with private firms to provide annual Spring and/or Fall leaf and branch collections.

All of the local solid waste haulers in the County own/operate transfer stations, either within or outside the County. Likewise, most of the haulers also operate materials recovery facilities along with the transfer stations. Local business and industry continue to investigate and implement volume reduction via various methods in their processing.

Currently all Type II and some Type III (particularly construction and demolition wastes) are deposited in sanitary landfills in adjacent/nearby counties. It is anticipated that during the preparation of this document that a Type III monofill for the deposit of paper mill residuals will be opened. This facility will accommodate the largest single component of the County's solid waste stream estimated at some 113,000 tons per year.

As indicated previously on several occasions, the private sector provides the bulk of the ownership and operation of solid waste collection, transfer, processing and disposal systems and facilities in the County. The public sector, however, does play a significant role in the implementation of waste reduction and recycling services via contractual efforts and legislative actions at the local level of government.

Alternate System No. 3

Alternate System No. 3 reflects many of the same components as Alternate System No. 1. In order to avoid redundancy in describing System No. 3, the following outlines/summarizes the major differences proposed in System No. 3:

Waste Reduction/Pollution Prevention

- * The County's Household Hazardous Waste Program would be expanded to accept HHW on a regional basis from residents in adjoining/nearby Counties via a contractual arrangement

Resource Recovery: Recycling & Composting

- * Enhancement of local curbside and drop off recycling programs in all communities in the County to increase participation by increasing frequency of collection in many entities
- * Improvement of local public and private yard waste collection and composting operations to include other organics in addition to yard wastes

Collection Processes and Transportation

- * Consolidate the number of materials recovery facilities used by area haulers to improve economic efficiencies in the processing, marketing and transportation of recyclable materials
- * Maintain a minimum number of transfer stations to facilitate the transfer of solid waste
- * Incorporate direct haul of solid waste into the transportation component of the solid waste system

Sanitary Landfill

- * Development of a Type II sanitary landfill in Kalamazoo County in order to maintain economic advantages and reduce dependency on out-of-County disposal

As noted previously, System No. 3, with the aforementioned proposed modifications/additions, mirrors System No. 1 in all other solid waste management system component operations.

Evaluation Summary of Non-Selected Systems

The non-selected systems (Alternate Systems 1 & 3) were previously evaluated in the

Data Base portion of the Plan. The following lists the advantages and disadvantages of the non-selected systems.

Advantages

- Continuity of services and programs (Systems 1&3)
- Public acceptance (System 1)

Disadvantages

- Reliance on exportation and out-county sanitary landfills (System 1)
- Local public concern over development of sanitary landfill (System 3)
- No enhancement of waste reduction programs (System 1)

APPENDIX C

APPENDIX C

PUBLIC PARTICIPATION AND APPROVAL

The following summarizes the processes which were used in the development and local approval of the Plan including a summary of public participation in those processes, documentation of each of the required approval steps, and a description of the appointment of the solid waste management planning committee along with members of the committee.

Public Involvement Process

Pursuant to Section 11535a(c) of P.A. 451, all local units of government were notified of the initiation of the solid waste management planning process in September of 1997 (see Attachment C-1). As a result of that communication, a mailing list (Attachment C-2) was compiled and notices of all regular committee meetings during the Plan preparation were disseminated to those individuals so requesting notice. Attachment C-3 which outlines a proposed schedule/timetable for Plan preparation was also included in the initial communication with the local units of government. A press release (Attachment C-4) was also prepared to notify the general citizenry of the solid waste management planning process.

In regard to the approval and adoption of the Plan, Attachment C-5 is a communication to all local units notifying them of the release, public review and comment period, and public hearing on the Plan. Attachment C-6 is a legal notice to the general public of such comment period and public hearing.

Planning Committee Appointment Procedure

Kalamazoo County has maintained a Solid Waste Management Planning Committee since its inception in 1980. Membership has been continued through Board of Commissioner appointments/reappointments for the past eighteen years. With the exception of a representative from the "Regional Planning Agency," the Committee has remained in existence and meets on an infrequent basis. The regional planning agency has been requested on several occasions to submit a candidate for representation on the Committee, however the agency has chosen not to participate. Attachment C-7 is a listing of the current membership of the Kalamazoo County Solid Waste Management Planning Committee.



DEPARTMENT OF PLANNING & COMMUNITY DEVELOPMENT

201 WEST KALAMAZOO AVENUE • KALAMAZOO, MICHIGAN 49007
PHONE (616) 384-8112 FAX (616) 383-8862

MEMORANDUM

TO: All Local Units of Government

FROM: Kalamazoo County Solid Waste Management Planning Committee
Michael Swords, Chairman

DATE: September 18, 1997

SUBJECT: Notice of Intent of Kalamazoo County to Prepare 5-Year Update to the
Kalamazoo County Solid Waste Management Plan

Recently, all counties in the State of Michigan were notified by the Michigan Department of Environmental Quality (MDEQ) that preparation of the next Updates to County Solid Waste Management Plans were set to begin and that the Updates were due in to MDEQ by December 1, 1998. Counties were given the option of preparing the Plan Updates or passing the responsibility on to other parties pursuant to P.A. 451 of 1994, as amended. In August, the Kalamazoo County Board of Commissioners filed a "notice of intent" with the MDEQ that it would prepare the Plan Update for Kalamazoo County.

The purpose of this communication is to inform you that the task of preparing the subject Plan Update has commenced under the direction of the Kalamazoo County Solid Waste Management Planning Committee. Enclosed you will find a proposed schedule/timetable for processing the Plan Update. There is no action requested of your unit of government at this time. This notice is for information only.

If you would like to receive copies of the Solid Waste Management Planning Committee meeting agendas and minutes or have questions regarding the Plan Update process, please contact Mr. Dean Holub at the Department of Planning & Community Development at 384-8114.

Encl.

cc: Board of Commissioners
5250



MR WALTER SCHNEIDENBACH
5380 GLEN HARBOR DR
KALAMAZOO MI 49009

SMPC
PO BOX 2137
PORTAGE MI 49081-2137

ATTACHMENT C-2
MR MARK HOFFMAN
707A GARLAND CIRCLE
KALAMAZOO MI 49008

Mr n Cummins
Georgia Pacific Corp
2425 KING HIGHWAY
KALAMAZOO MI 49001

MR BILL FRENCH
15200 FT CUSTER DR
AUGUSTA MI 49012

Mr Jerry VanderRoest Supervisor
Charleston Township
1499 SOUTH 38TH ST
GALESBURG MI 49053

Mr Dan Batts
6359 WEST "Q" AVENUE
KALAMAZOO MI 49009

MS DEBORAH L BOGEMA
7867 N 34TH ST
RICHLAND MI 49083

MR JAMES PORTER
EARLY LENNON FOX ET AL
900 COMERICA BLDG
KALAMAZOO MI 49007-4752

Ms Wendy Ginther
9101 VANDERBILT ROAD
PORTAGE MI 49024

MR PAT DIGIOVANNI
CITY MANAGERS OFFICE
241 W SOUTH ST
KALAMAZOO MI 49007

MS TISH POWELL
KALAMAZOO PUBLIC SERVICES
415 STOCKBRIDGE AVE
KALAMAZOO MI 49001-2898

MR RON REID MANAGER
KALAMAZOO CTY RD COMMISSION
3801 E KILGORE RD
KALAMAZOO MI 49001

MS MARY POWERS
917 S PARK ST
KALAMAZOO MI 49001

Mr Ted A Hartridge
3723 SONGBIRD LANE
KALAMAZOO MI 49008

MR JAMES M THORNE
OLD FIELD TRAIL
KALAMAZOO MI 49008

MS MARY JONES
ALLEGAN CO
3819 112TH AVE
ALLEGAN MI 49010

Mr Tim Hudson, Supervisor
Charter Township of Comstock
PO BOX 414
COMSTOCK MI 49041

MR FRAN BELL
PO BOX 147
GALESBURG MI 49053

MR JOSEPH VANBRUGGEN
3146 NORTH 33RD ST
GALESBURG, MI 49053

MR MICHAEL D SWORDS
1025 BERKSHIRE
KALAMAZOO MI 49007

Ms Sharon Gillette
Browning Ferris Industries
PO BOX 51427
KALAMAZOO MI 49005-1427

MR SONNY DAMVELT
4520 CROYDEN
KALAMAZOO MI 49006

ST JOESPH CTY PLANNING DEPT
PO BOX 277
CENTREVILLE MI 49032

MS JUDY MAYO
4318 LAKESIDE DR
KALAMAZOO MI 49008

Mr Roger Andrews
Calhoun County
315 WEST GREEN ST
MARSHALL MI 49068

MR BLAINE LAM
LAM & ASSOCIATES
100 W MICHIGAN STE 220
KALAMAZOO MI 49007

MR V HARRY ADROUNIE
1905 N BROADWAY
STINGS MI 49058

Mr Henry Valkema
2357 NORTH 38th ST
AUGUSTA MI 49012

MR DENNIS SCHUH
PLANNING PARKS REC AND DPW
COURTHOUSE RM 101
ST JOSEPH MI 49085

ADMINISTRATORS OFFICE
VAN BUREN CTY COURTHOUSE
PAW PAW MI 49079

Mr Ron Fleckenstein, Supervisor
Charter Township of Oshtemo
7275 WEST MAIN STREET
KALAMAZOO MI 49009

Mr Belden Smith
8800 WEST "D" AVE
KALAMAZOO MI 49009

PROPOSED SCHEDULE

KALAMAZOO COUNTY SOLID WASTE MANAGEMENT PLAN

September 17, 1997	SWMPC Meeting
September 18, 1997	Notify All Local Units of Plan Process
November 19, 1997	SWMPC Meeting
January 21, 1998	SWMPC Meeting
March 18, 1998	SWMPC Meeting
April 15, 1998	SWMPC Meeting
May 20, 1998	SWMPC Meeting <ul style="list-style-type: none"> * Approval of Draft SWM Plan * Initiation of 90-day Review and Comment Period * Establish Public Hearing Date & Time
May 21, 1998	Notify All Local Units of Government & Interested Parties of Draft Plan Availability and Review and Comment Process
August 6, 1998	KMCPC Conducts Public Hearing
August 18, 1998	90-day Review & Comment Period Ends
August 19, 1998	SWMPC Meeting <ul style="list-style-type: none"> * Review & Approval of Final Solid Waste Management Plan for Kalamazoo County * Transmittal of Plan to Board of Commissioners
September 1, 1998	Board of Commissioners <ul style="list-style-type: none"> * Review & Approval of Plan * Transmittal of Plan to Local Units of Government
September 2, 1998	Transmit SWM Plan to All Local Units of Government for Respective Review & Action
September 2, 1998 through November 30, 1998	Review & Action by Local Units
December 1, 1998	Transmit SWM Plan to MDEQ



DEPARTMENT OF PLANNING & COMMUNITY DEVELOPMENT

201 WEST KALAMAZOO AVENUE • KALAMAZOO, MICHIGAN 49007
PHONE (616) 384-8112 FAX (616) 383-8862

Dean J. Holub, Assistant County Administrator for
Economic & Community Development
384-8114

FOR IMMEDIATE RELEASE

Nearly Half of County Waste is Recycled

Kalamazoo County homes and businesses generate an estimated 558,552 tons of solid waste per year. Approximately 113,850 tons per year of waste is paper mill residuals -- generally, paper fibers which may be too small to be recycled into new products -- which will be landfilled within Kalamazoo County beginning in 1998. Of the remaining 444,702 tons per year of generated waste, approximately 46 percent, or an estimated 204,000 tons per year, of materials is currently being diverted from landfill disposal via public and private waste reduction efforts, according to a draft County Solid Waste Management Plan which the Kalamazoo County Solid Waste Planning Committee is currently preparing for the Michigan Department of Environmental Quality.

Paper and yard waste are two of the most common recovered materials, representing 48 percent of all materials which are currently diverted from landfill disposal. Examples of how papers and yard waste are diverted from landfill disposal include recycling programs for office papers and boxes at 60 percent of Kalamazoo County businesses, and efforts by most homeowners to mulch their grass clippings or participate in community fall leaf pick-ups. Paper and yard waste were also the two most common materials by weight found in landfills prior to state law which banned yard waste from Michigan landfills in March 1995.

The draft plan also identifies a strategy for Kalamazoo County to maintain and increase its current waste reduction efforts and to continue to rely on landfills in neighboring counties to dispose of the estimated 240,757 tons per year of waste which is not currently recycled, instead of planning to construct a new landfill within the County to accept residential and commercial waste. Kalamazoo County is in the process of obtaining consent from neighboring counties with landfills

to accept Kalamazoo County's non-recovered wastes for the next ten years.

Future meetings of the Kalamazoo County Solid Waste Planning Committee are scheduled for January 21, March 18, April 15, and May 20 at 7:00 p.m. in room 207 of the County Administration Building, 201 W. Kalamazoo Avenue. The plan is expected to be submitted to the Michigan Department of Environmental Quality by December 1, 1998.



DEPARTMENT OF PLANNING & COMMUNITY DEVELOPMENT

201 WEST KALAMAZOO AVENUE • KALAMAZOO, MICHIGAN 49007
PHONE (616) 384-8112 FAX (616) 383-8862

MEMORANDUM

TO: Local Units of Government, Adjacent Counties, Interested Individuals, Organizations/Agencies, Public Libraries

FROM: Kalamazoo County Solid Waste Management Planning Committee
Michael Swords, Chairman

DATE: May 21, 1998

SUBJECT: Transmittal of Proposed Solid Waste Management Plan Update for Kalamazoo County

The Kalamazoo County Solid Waste Management Planning Committee hereby submits its Proposed Solid Waste Management Plan Update for Kalamazoo County for your review and comment. The enclosed document represents several months of effort on behalf of the Committee in fulfilling the requirements of P.A. 451 of 1994, as amended, which mandates that all counties in the State develop solid waste management plans for their respective jurisdictions and further, update those plans every five (5) years. The initial Kalamazoo County Solid Waste Management Plan was prepared in 1983.

The Committee is releasing the Proposed Plan during a required 90-day review and comment period which commenced on the above date and will terminate on August 18, 1998. During this public review and comment period, a formal public hearing will be held to receive verbal comment. Written comments will be accepted during the 90-day period as well as at the public hearing which is scheduled for Thursday, August 6, 1998 at 7:00 p.m. in the County Administration Building. Official notices will be published at a later date in advance of the Hearing.

Following the 90-day review and comment period, the Committee may modify/alter the document as a result of public comment and recommend the Plan Update for approval to the Kalamazoo County Board of Commissioners. After the Board's review and action, the Plan Update will then be transmitted to all of the local units of government in the County for their official review and action. Following this



step, the Plan Update will be submitted to the Michigan Department of Environmental Quality for final review and action.

During this time period, you and/or your organization/unit of government is being given an opportunity to review the proposed document in order to provide any comments (written and/or verbal) in advance or at the Public Hearing. Pursuant to P.A. 451 of 1994, as amended, local units of government will receive final proposed copies of the document for their formal action following County Board action later this year.

The Committee would like to extend its offer to make a brief presentation on the Proposed Plan Update to your unit of government/organization. Should you desire such a presentation, please contact the Department of Planning & Community Development at 384-8112 to schedule a meeting date and time.

Further, since supplies of the Proposed Plan Update are limited, your cooperation and assistance in circulating copies of the document would be greatly appreciated.

Should you have any questions regarding the document or the Plan Update review and approval process, please feel free to contact this Department.

Thank you for your interest in this matter.

LIBRARIES PLEASE NOTE: Please place the enclosed document in a reference or other appropriate short-term area of your facility for public review/access during the next 90 days. A published Public Notice indicates that copies of the proposed document may be inspected at all public libraries in Kalamazoo County. A final version of the document will be transmitted to your library at a later date following final acceptance and printing. Thank you for your interim cooperation.

Encl.

cc: Board of Commissioners
KMCP
5250 (1997/98)

PUBLIC NOTICE

Please be advised that pursuant to P.A. 451 of 1994, as amended, the Kalamazoo County Solid Waste Management Planning Committee (SWMPC) has initiated a 90-day public review and comment period for the Proposed Solid Waste Management Plan Update for Kalamazoo County. The subject document may be inspected at any Public Library in Kalamazoo County, as well as the Kalamazoo County Department of Planning & Community Development and Board of Commissioners' office during normal business hours, Monday through Friday.

The public review and comment period will terminate on Tuesday, August 18, 1998. A public hearing will be held on the subject Plan Update on Thursday, August 6, 1998 at 2:00 p.m. in the County Administration Building, 201 West Kalamazoo Avenue.

Written comments should be addressed to the Kalamazoo County SWMPC in c/o the Department of Planning & Community Development, Suite 202, 201 West Kalamazoo Avenue, Kalamazoo, MI 49007. Questions regarding the Plan Update document and/or process may be directed to the Department at (616) 384-8112.

STATE OF MICHIGAN)
County of Kalamazoo

ss. *Elizabeth Haderwood*

being duly sworn deposes and says he/she is Principal Clerk of

THE KALAMAZOO GAZETTE
DAILY EDITION

a newspaper published and circulated in the County of Kalamazoo and otherwise qualified according to Supreme Court Rule; and that the annexed notice, taken from said paper, has been duly published in said paper on the following day(day(s)).....

..... May 27 A.D. 19 98

Sworn to and subscribed before me this 27th day of May 19 98

Karen J Wilkes

Notary Public, Kalamazoo County, Michigan

KAREN J WILKES
NOTARY PUBLIC STATE OF MICHIGAN
VAN BUREN COUNTY
ACTING IN:
KALAMAZOO COUNTY
MY COMMISSION EXP. SEPT 26, 2001

Kalamazoo County

SOLID WASTE MANAGEMENT PLANNING COMMITTEE

Membership Roster as of April 8, 1998

Name	Address	City	Zip	Representation	Tel: Office	Tel: Home	Term
Dan Batts	6359 W. Q Ave.	Kalamazoo	49009	Solid Waste Industry	(616) 463-5588 226-9200		3/98- 3/01
Bill French	15200 Ft. Custer Dr.	Augusta	49012	Environmental	381-4344	731-2627	3/97- 3/00
Wendy Ginther	9101 Vanderbilt Rd.	Portage	49024	Solid Waste Industry	969-7509		3/96- 3/99
Ted Hartridge	3723 Songbird Ln.	Kalamazoo	49008	Waste Generator	381-0010		3/97- 3/00
Mark Hoffman	707A Garland Cir.	Kalamazoo	49008	Environmental	349-9711	381-8899	3/96- 3/99
Bruce Minsley	415 Stockbridge Ave.	Kalamazoo	49001	City Government	337-8730	337-8660	3/96- 3/99
Mary Powers	917 S. Park St.	Kalamazoo	49001	County Government		345-9295	3/97- 3/00
Jay Sherwood	270 Montague	Portage	49024	Solid Waste Industry	382-0677	329-2029	3/98- 3/01
Mike Swords	1025 Berkshire	Kalamazoo	49006	Public	387-5381	375-1063	3/98- 3/01
James Thorne	4210 Old Field Trail	Kalamazoo	49008	Public	349-2064	372-2102	3/97- 3/00
Henry Valkema	2357 N. 38th St.	Augusta	49012	Solid Waste Industry	385-2590		3/97- 3/00
Joe Van Bruggen	3146 N. 33rd St.	Galesburg	49053	Public		665-9213	3/98- 3/01
Jerry Vander Roest	1499 S. 38th St.	Galesburg	49053	Twp. Government	(800) 635-0793	665-7617	3/96- 3/99
(vacancy)				Regional Planning Agency			

APPENDIX D

APPENDIX D

ATTACHMENTS

Plan Implementation Strategy

As described and noted on several previous occasions, the selected solid waste management system for Kalamazoo County is a perpetuation of the current system with the incorporation of certain enhancements of the waste reduction segment. It is anticipated that operation of the planned system will continue in much the same manner and framework as it does today. With minor exceptions, implementation of the recommended system should function with no disruption to the existing system. Therefore, as indicated in the implementation timetable in the Selected System portion of the Plan, all of the components will operate on an "on-going" basis. Enhancements of the systems' waste reduction component, such as increasing frequency of curb-side collections, adding new source separated materials to waste reduction collections, etc., will take place throughout the planning period as a result of on-going public education and information programs.

In conclusion, there is no specific or identified "strategy" to implement the County's Plan due to its current nature and operation.

Solid Waste Disposal Facility Location Maps

The following maps and/or legal descriptions (Attachments D-1 through D-12) are intended to identify the locations of the various solid waste disposal facilities proposed to serve Kalamazoo County during the planning period.

Special Conditions

The following communications (D-13 through D-18) authorize the export of solid waste from Kalamazoo County.

Resolutions

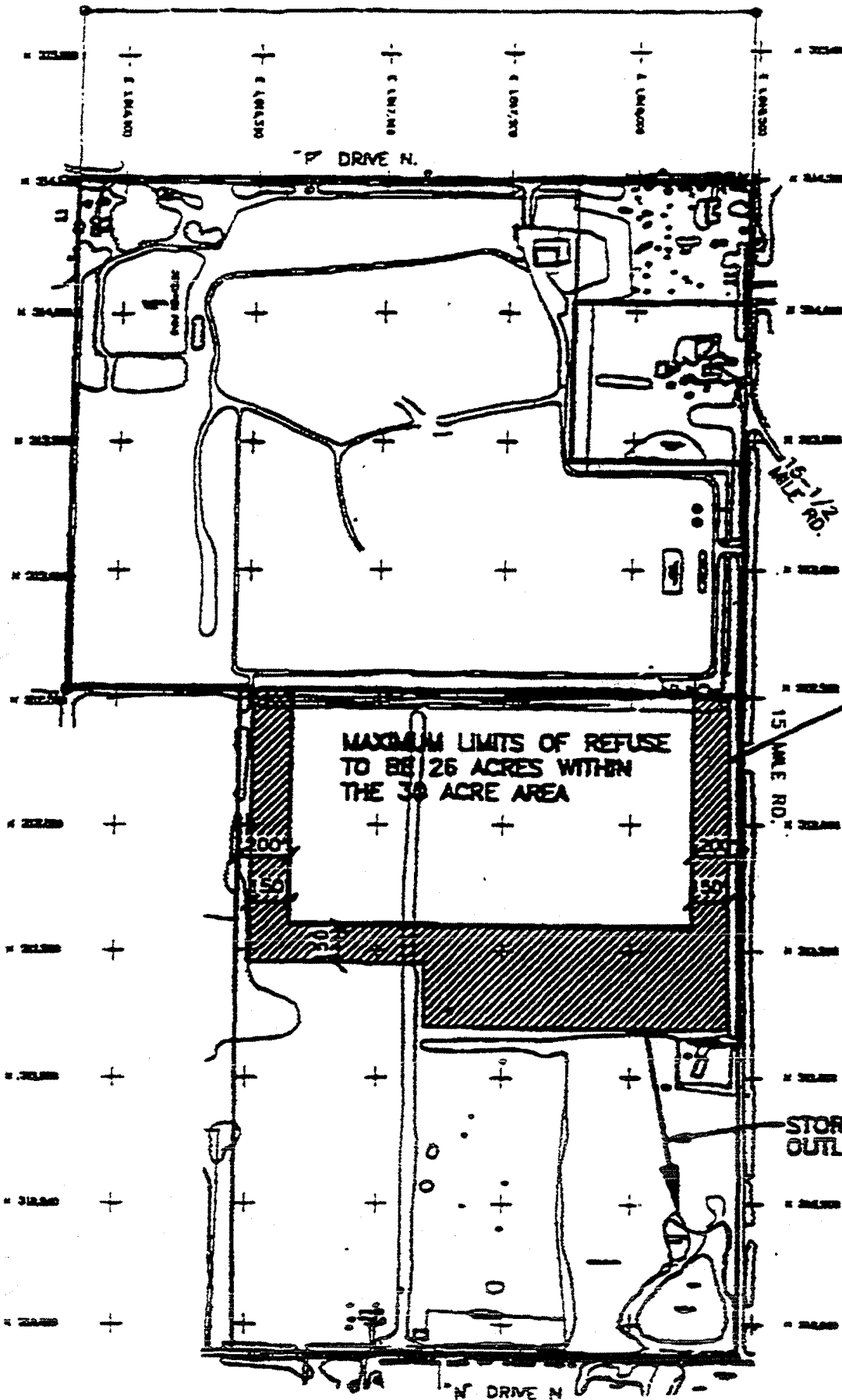
Attachments D-19 through D-37 represent local resolutions/letters of Plan Update approval from the County and at least 67% of the local units of government in the County.

C&C Landfill

THE 26 ACRE (LIMITS OF REFUSE)
LANDFILL EXPANSION NOT TO EXCEED SKETCH



SCALE: 1" = 600'
FILE: C9305604



PERIMETER
MAINTENANCE ROAD,
STORM DITCHES, AND
DETENTION POND
(NO BUILDINGS)

NOTE:
MONITORING WELLS
MAY BE PLACED AS
NEEDED ON PROPERTY
& NOT LIMITED
BY THIS EXHIBIT.

PHONE: 616-983-1531

Wightman and Associates, Inc.

CONSULTING ENGINEERS & SURVEYORS
920 BROAD ST. - P.O. BOX D
ST. JOSEPH, MICHIGAN 49085

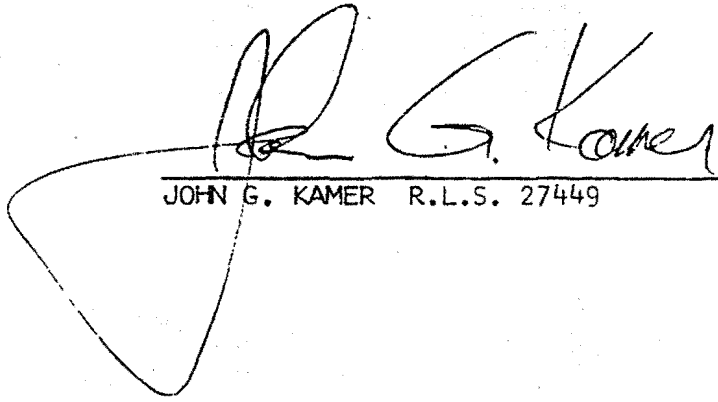
M.R. RUSHLOW P.E. R.L.S.
T.A. DENEAU P.E.
A.C. LINDBLOM II ARCH.
L.M. VESEI P.E.
J.G. KAMER R.L.S.

FOREST LAWN LANDFILL

PROPERTY DESCRIPTION

SEPTEMBER 30, 1983

THAT PART OF THE SOUTHEAST QUARTER OF SECTION 17, TOWNSHIP 8 SOUTH, RANGE 20 WEST, THREE OAKS TOWNSHIP, BERRIEN COUNTY, MICHIGAN, DESCRIBED AS: COMMENCING AT THE SOUTHEAST CORNER OF SAID SECTION 17; THENCE NORTH ON THE EAST LINE OF SAID SECTION 17, A DISTANCE OF 988.30 FEET; THENCE SOUTH $89^{\circ} 31' 04''$ WEST 33.00 FEET TO THE TRUE PLACE OF BEGINNING OF THE LAND HEREIN DESCRIBED; THENCE SOUTH $89^{\circ} 31' 04''$ WEST 1291.37 FEET; THENCE SOUTH $0^{\circ} 04' 40''$ WEST 329.24 FEET; THENCE SOUTH $62^{\circ} 04' 46''$ WEST 142.73 FEET; THENCE NORTH $2^{\circ} 04' 46''$ EAST 725.49 FEET; THENCE SOUTH $79^{\circ} 46' 46''$ WEST 823.59 FEET; THENCE NORTH $48^{\circ} 49' 37''$ WEST 251.19 FEET; THENCE NORTH $0^{\circ} 52' 41''$ WEST 939.15 FEET; THENCE SOUTH $81^{\circ} 44' 07''$ EAST 1331.19 FEET; THENCE SOUTH $82^{\circ} 36' 03''$ EAST 1097.33 FEET; THENCE SOUTH 943.67 FEET TO THE PLACE OF BEGINNING. CONTAINING 56.33 ACRES MORE OR LESS.



JOHN G. KAMER R.L.S. 27449

LEGAL DESCRIPTIONS FOR ORCHARD HILL LANDFILL

OVERALL PARCEL DESCRIPTION

MARCH 25, 1992

A parcel of land that is part of Sections 28 and 33 in Town 3 South, Range 17 West, Coloma and Watervliet Townships Berrien County, Michigan described as:

Beginning at the Section Corner common to Sections 27, 28, 33 and 34 in Town 3 South, Range 17 West, Berrien County, Michigan; thence N00°38'14"W 1047.54 feet along the East Line of Section 28 to the South Right-of-Way Line of Interstate Highway I-94; thence S85°33'19"W 2627.72 feet along said south line to the North and South 1/4 Line of said section; thence S00°48'21"E 1848.03 feet along said line to the 1/4 Corner common to aforementioned sections 28 and 33; thence N89°54'23"E 863.00 feet along the section line common to said sections; thence S00°18'30"W 1083.98 feet; thence parallel with the north line of Section 33 N89°54'23"E 881.78 feet to the West Line of the Northeast 1/4 of the Northeast 1/4 of said section; thence S00°35'47"E 238.53 feet along said west line to the South Line of the Northeast 1/4 of the Northeast 1/4 of said section; thence S89°53'19"E 1308.89 feet along said south line to the East Line of Section 33; thence N00°39'04"W 1307.23 feet along said east line to the Section Corner common to Sections 27, 28, 33 and 34 and the Point of Beginning. Containing 160.28 acres more or less and excepting all easements and restrictions of record, if any.

DESCRIPTION
PARCEL "A"

MAY 12, 1993

A parcel of land that is part of Sections 28 in Town 3 South, Range 17 West, Watervliet Township, Berrien County, Michigan described as:

Commencing at the Southeast corner of Section 28, Town 3 South, Range 17 West, Berrien County, Michigan; thence N00°38'14"W 1847.34 feet along the East Line of section 28; thence S85°33'19"W 70.15 feet along the South Right-of-Way of Interstate 94 to the Point of Beginning; thence S00°38'14"E 219.17 feet; thence N89°21'48"E 20.00 feet; thence S00°38'14"E 380.00 feet; thence N89°21'48"E 17.00 feet; thence S00°38'17"E 461.62 feet; thence S89°44'27"W 287.97 feet; thence S87°25'18"W 131.84 feet; thence S02°34'09"W 129.91 feet; thence S00°21'50"E 136.19 feet; thence S02°00'18"W 231.91 feet; thence N89°28'22"W 545.18 feet; thence N85°44'56"W 268.14 feet; thence N00°38'14"W 1464.54 feet; thence N85°33'19"E 1217.16 feet along the South Right-of-Way of Interstate 94 to the Point of Beginning. Containing 38.5 acres more or less and subject to all easements and restrictions, if any.

DESCRIPTION
PARCEL "B"

APRIL 8, 1992

A parcel of land that is part of Sections 28 and 33 in Town 3 South, Range 17 West, Coloma and Watervliet Townships, Berrien County, Michigan described as:

Commencing at the Northeast corner of Section 33, Town 3 South, Range 17 West, Berrien County, Michigan; thence S89°54'23"W 133.00 feet along the North Line of said section to the Point of Beginning; thence S00°39'04"E 500.02 feet; thence S89°54'23"W 306.01 feet; thence N00°39'04"W 515.98 feet; thence S89°34'05"W 164.48 feet; thence S89°16'01"W 398.71 feet; thence N89°48'38"W 289.50 feet; thence N01°12'01"W 134.33 feet; thence N02°27'53"E 138.63 feet; thence S89°44'56"E 268.14 feet; thence S89°26'22"E 545.18 feet; thence N02°00'18"E 231.91 feet; thence N00°21'50"W 136.19 feet; thence N02°34'08"E 129.91 feet; thence N87°25'18"E 131.84 feet; thence N89°44'27"E 187.97 feet; thence S00°38'12"E 781.29 feet to the North Line of Section 33, Town 3 South, Range 17 West and the Point of Beginning. Containing 14.49 acres and subject to all easements and restrictions, if any.

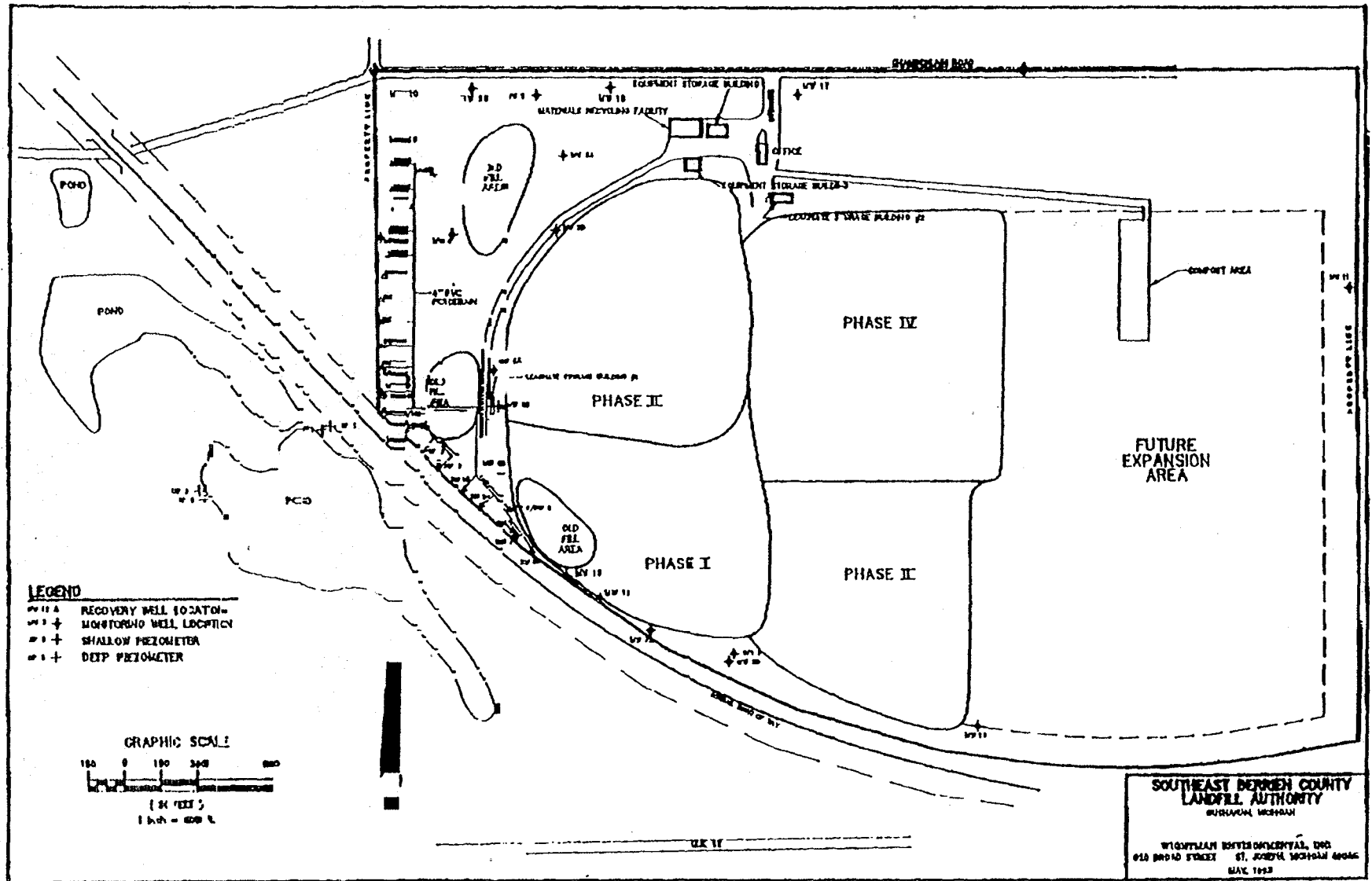
DESCRIPTION
PARCEL "C"

October 27, 1992

A parcel of land that is part of Sections 28 and 33 in Town 3 South, Range 17 West, in Coloma and Watervliet Townships Berrien County, Michigan described as:

Commencing at the Section Corner common to Sections 27, 28, 33 and 34 in Town 3 South, Range 17 West, Berrien County, Michigan; thence S00°39'04"E 500.03 feet along the east line of said Section 33 to the Point of Beginning; thence continuing along said line S00°39'04"E 807.20 feet to the South line of the NE 1/4 of the NE 1/4 of said section; thence N89°53'19"W 1308.89 feet along said line to the West line of the NE 1/4 of the NE 1/4 of said section; thence N00°35'47"W 238.53 feet along said line; thence S89°54'23"W 881.78 feet; thence N00°18'30"E 1063.98 feet to the section line common to aforementioned Sections 33 and 28; thence S89°54'23"W 663.00 feet along said section line to the 1/4 corner common between said sections; thence N00°48'21"W 1848.03 feet along the North/South 1/4 line of said Section 28 to the South Right-of-Way of Interstate 94; thence N85°33'19"E 1340.41 feet along said south line; thence S00°38'14"E 1464.54 feet; thence S02°27'53"W 138.63 feet; thence S01°12'01"E 134.33 feet; thence S89°46'38"E 289.50 feet; thence N89°16'01"E 398.71 feet; thence N89°34'05"E 164.48 feet; thence S00°39'04"E 515.98 feet; thence N89°54'23"E 438.01 feet to the East line of said Section 33 and the Point of Beginning. Containing 102.43 acres more or less and subject to all easements and restrictions of record, if any.

SOUTHEAST BERRIEN COUNTY LANDFILL AUTHORITY SITE PLAN

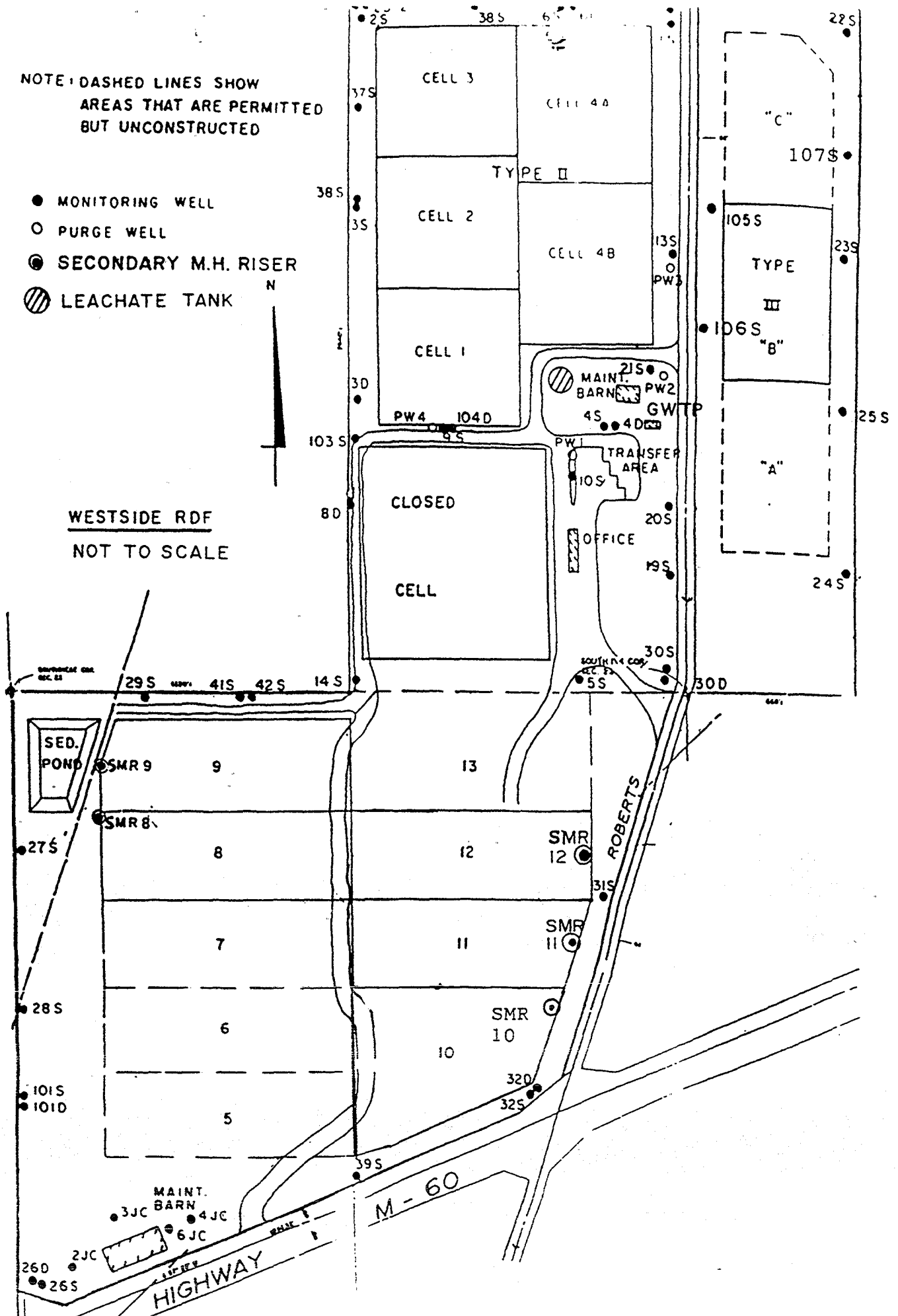


NOTE: DASHED LINES SHOW
AREAS THAT ARE PERMITTED
BUT UNCONSTRUCTED

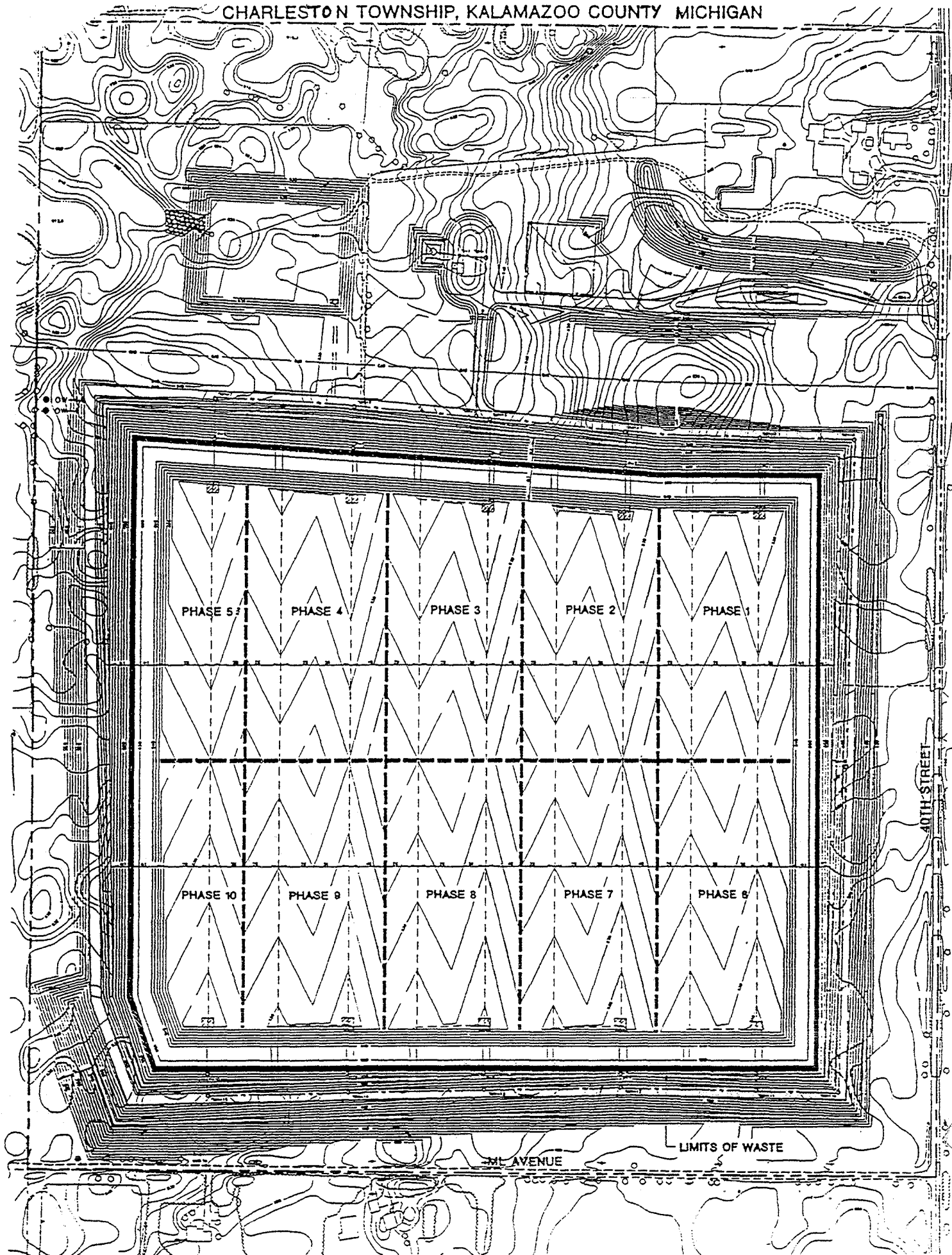
- MONITORING WELL
- PURGE WELL
- ⊙ SECONDARY M.H. RISER
- ▨ LEACHATE TANK

N

WESTSIDE RDF
NOT TO SCALE



KALAMZOO VALLEY GROUP LANDFILL
CHARLESTON TOWNSHIP, KALAMAZOO COUNTY MICHIGAN



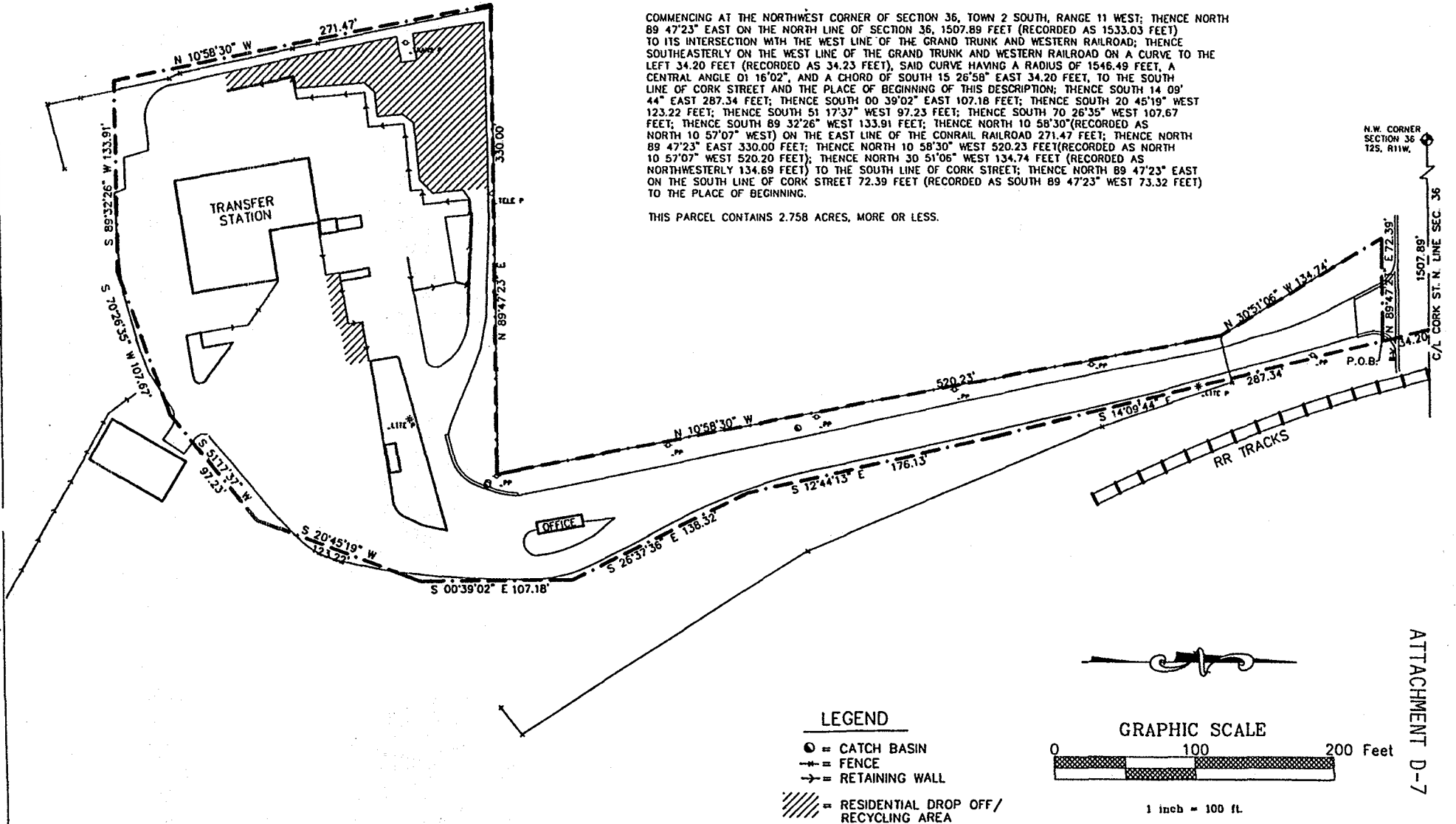
CORK STREET TRANSFER STATION

DESCRIPTION OF PROPERTY

A PARCEL OF LAND IN SECTION 36, TOWN 2 SOUTH, RANGE 11 WEST; BEING MORE PARTICULARLY DESCRIBED AS FOLLOWS:

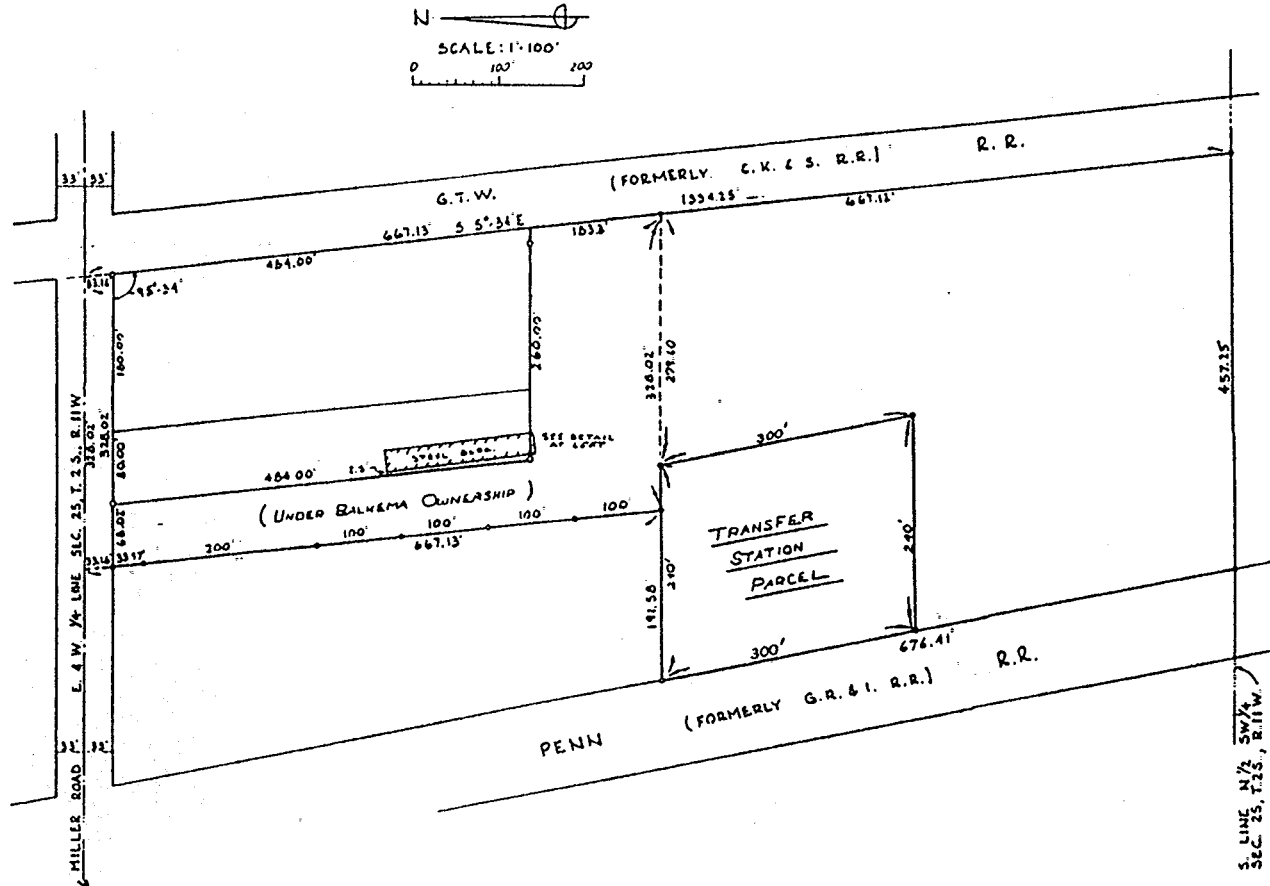
COMMENCING AT THE NORTHWEST CORNER OF SECTION 36, TOWN 2 SOUTH, RANGE 11 WEST; THENCE NORTH 89°47'23" EAST ON THE NORTH LINE OF SECTION 36, 1507.89 FEET (RECORDED AS 1533.03 FEET) TO ITS INTERSECTION WITH THE WEST LINE OF THE GRAND TRUNK AND WESTERN RAILROAD; THENCE SOUTHEASTERLY ON THE WEST LINE OF THE GRAND TRUNK AND WESTERN RAILROAD ON A CURVE TO THE LEFT 34.20 FEET (RECORDED AS 34.23 FEET), SAID CURVE HAVING A RADIUS OF 1546.49 FEET, A CENTRAL ANGLE 01°16'02", AND A CHORD OF SOUTH 15°26'58" EAST 34.20 FEET, TO THE SOUTH LINE OF CORK STREET AND THE PLACE OF BEGINNING OF THIS DESCRIPTION; THENCE SOUTH 14°09'44" EAST 287.34 FEET; THENCE SOUTH 00°39'02" EAST 107.18 FEET; THENCE SOUTH 20°45'19" WEST 123.22 FEET; THENCE SOUTH 51°17'37" WEST 97.23 FEET; THENCE SOUTH 70°26'35" WEST 107.67 FEET; THENCE SOUTH 89°32'26" WEST 133.91 FEET; THENCE NORTH 10°58'30" (RECORDED AS NORTH 10°57'07" WEST) ON THE EAST LINE OF THE CONRAIL RAILROAD 271.47 FEET; THENCE NORTH 89°47'23" EAST 330.00 FEET; THENCE NORTH 10°58'30" WEST 520.23 FEET (RECORDED AS NORTH 10°57'07" WEST 520.20 FEET); THENCE NORTH 30°51'06" WEST 134.74 FEET (RECORDED AS NORTHWESTERLY 134.69 FEET) TO THE SOUTH LINE OF CORK STREET; THENCE NORTH 89°47'23" EAST ON THE SOUTH LINE OF CORK STREET 72.39 FEET (RECORDED AS SOUTH 89°47'23" WEST 73.32 FEET) TO THE PLACE OF BEGINNING.

THIS PARCEL CONTAINS 2.758 ACRES, MORE OR LESS.



TRANSFER STATION PARCEL DESCRIPTION

Land located in the South half of the Northwest quarter of the Southwest quarter of Section 25, Town 2 South, Range 11 West more particularly described as follows: Commencing at the intersection of the East and West quarter line of Section 25 with the Westerly line of the Grand Trunk Western Railroad; thence South 5°-34' East along the Westerly line of said right-of-way, 667.13 feet to the South line of the North half of the Northwest quarter of the Southwest quarter of said Section 25; thence West along said South line, 276.60 feet to the place of beginning; thence South 9°-48' East parallel to the East line of the Conrail right-of-way, 300 feet; thence Westerly parallel to said South line, 240 feet; thence Northerly along the East line of the Conrail right-of-way, 300 feet to said South line; thence Easterly thereon 240 feet to the place of beginning; said description containing 1.65 acres, more or less, subject to all conditions, limitations, restrictions and easements of record.



SITE SURVEY

INFORMATION BASED ON SURVEY PREPARED BY
WILKINS & WHEATON ENGINEERING CO.

ADD BAR SCALE 9/22/83 RMC
REVISED TO SHOW ENCROACHMENT 2-12-84 J.E.B.

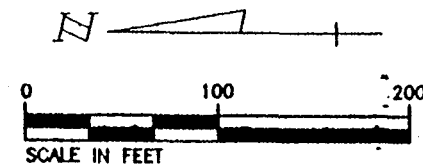
NOTE: IRONS AT ALL POINTS MARKED (+)

	ARCHITECTS ENGINEERS PLANNERS SURVEYORS	GOVE ASSOCIATES, INC. 1601 Portage Street Kalamazoo, Michigan (616) 385-0011	SCALE: 1"=100'-0"	DATE	MILLER ROAD TRANSFER STATION CITY OF KALAMAZOO KALAMAZOO CO., MICHIGAN PARCEL DESCRIPTION	SHEET OF 5 5	PROJECT NUMBER B-9618-1	
			DRAWN BY: GARY G.	3/31/83				
			CHECKED BY: BILL O.	3/31/83				
			APPROVED BY: JMM	1/11/83				

© COPYRIGHT 1983
G.O.V.E.

GEMBRIT CIRCLE DR.

GEMBRIT CIRCLE



TRAILER FOR STORAGE
OF CORRUGATED BALES
AND NEWSPRINT

LOT 17

EXIST.
OFFICES

EX. BUILDING
F.F. ELEV. 848.09'
F.F. ELEV. 848.09'

EX. BLDG

LOT 16

BUILDING ADDITION

40 C.Y. ROLLOFF
CONTAINER FOR
METALS

LOT 15

EX. BLDG

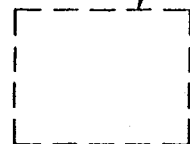
DAVIS CREEK

LOT 14

EX. BLDG

COMPOSTING AND
BRUSH STORAGE
AREA

PROPERTY LINE



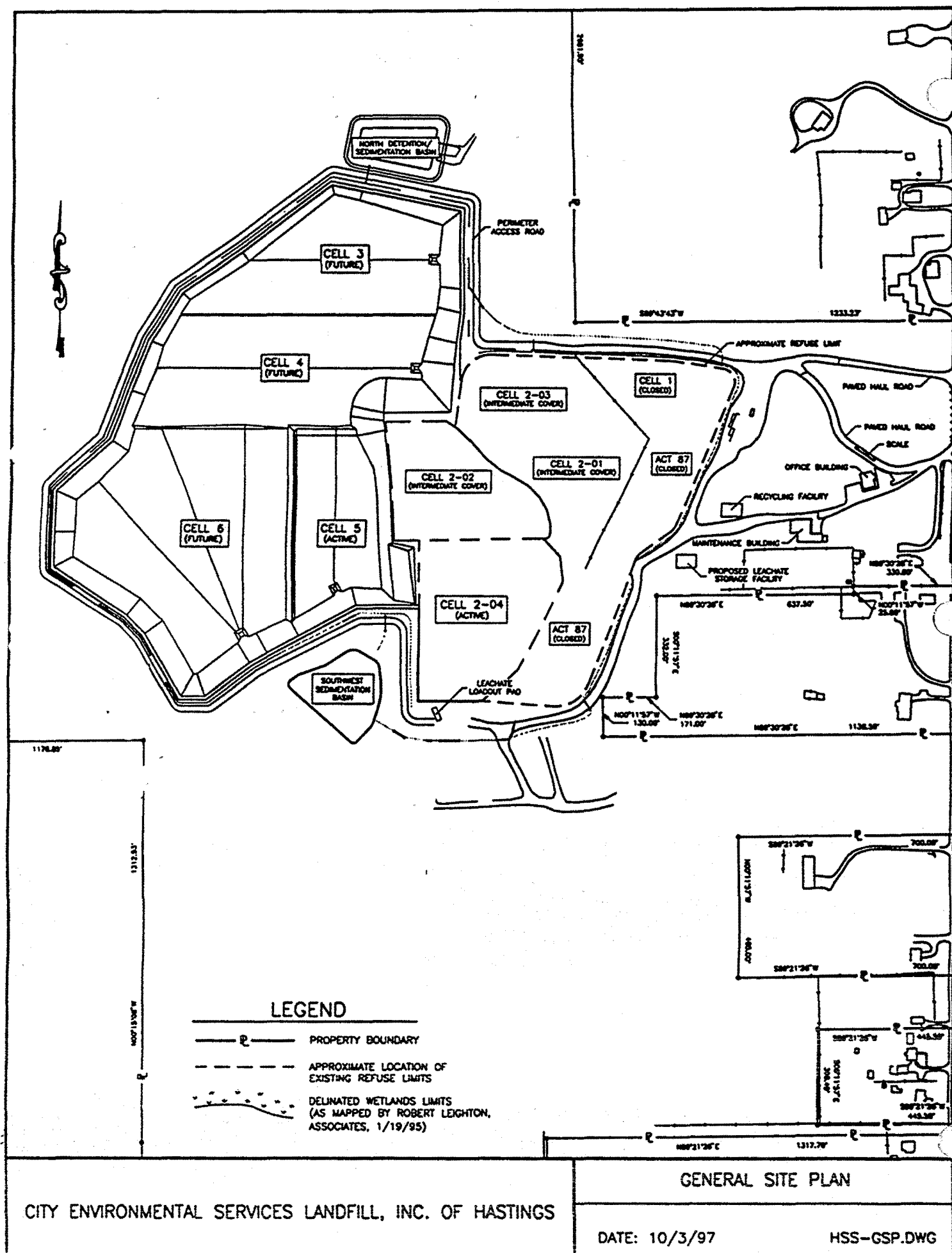
ATTACHMENT D-9

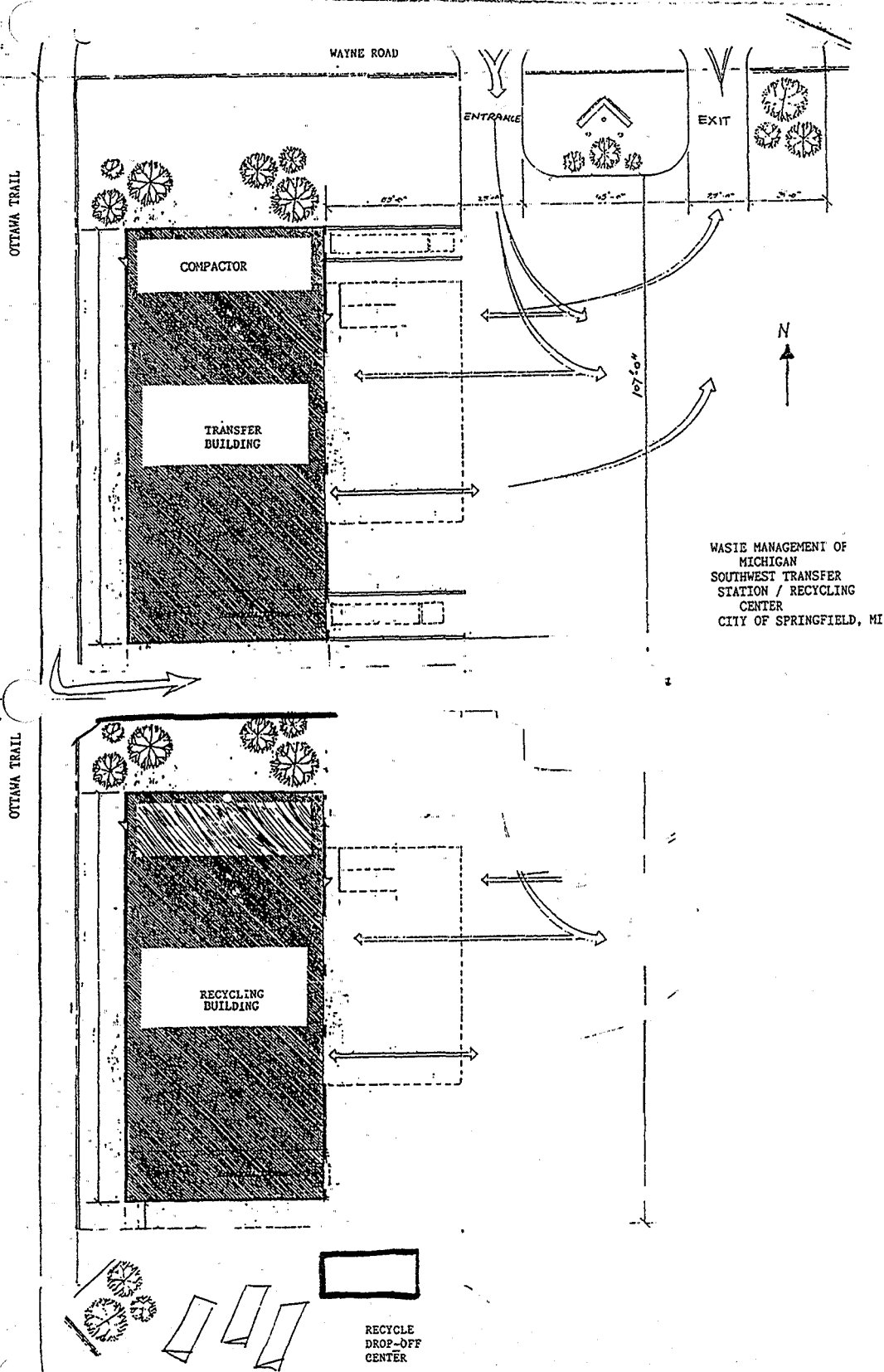
ROYAL HOLDINGS, INC.

ACT 641
SITE PLAN

5/97

3052MAP







RESOURCE RECOVERY PROJECT OF IONIA COUNTY

March 13, 1998

TO: Designated Planning Agencies for Berrien, Branch, Calhoun, Cass, Clare, Jackson, Kalamazoo, Midland, Mecosta, Osceola, Saginaw, Shiawassee, St. Joseph, Van Buren, and Wexford Counties

FROM: Don Lehman, Ionia County Solid Waste Coordinator

RE: Solid Waste Management Plan Import/Export Arrangements

At Ionia County's Solid Waste Planning Committee meeting on March 5, your county was designated as a county from which "Special Wastes" will be accepted at solid waste disposal facilities in Ionia County. Presently that consists of the Pitsch Landfill in northwest Ionia County. "Special Wastes," as described in Ionia County's Solid Waste Management Plan, consists of construction and demolition debris, foundry sand, sludge, contaminated soils, street sweepings, fly ash, slag, agricultural waste, and others. These "Special Wastes" are Type II wastes, but exclude general Type II residential, commercial, and industrial wastes.

As Ionia County updates its SWMP we will be listing your county as a potential exporter of "Special Waste" to Ionia County. Ionia County's Solid Waste Planning Committee requests that your Solid Waste Management Plan records Ionia County as an importing County for this type of waste. Some counties may desire that this type of arrangement be reciprocal and want their county to be recorded as an importing county for some of Ionia County's waste. If this is the desire of your Solid Waste Planning Committee, please contact me at your convenience.

Ionia County will most likely put an annual cap on the amount of waste permitted to be disposed of at the Pitsch Landfill in order to maintain sufficient capacity for Ionia County's future needs. This could put some restrictions on the use of Pitsch Landfill by your county, but under current conditions the need for restrictions seems to be very limited or even nonexistent.

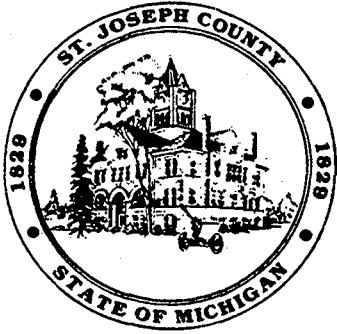
If you have any questions or comments about Ionia County's intent in proposing this waste disposal relationship, please contact me with your questions or concerns. It is to be hoped that this type of arrangement will help provide your county, and Ionia County, with both primary and contingency capacity over the next ten years and beyond.

Sincerely,

A handwritten signature in cursive script, appearing to read "Don Lehman".

Donald Lehman
Solid Waste Coordinator

100 Library Street, Ionia, MI 48846
Phone: (616)527-5357 Fax: (616)527-5312



PLANNING COMMISSION

Telephone: (616) 467-5617

125 W. Main St.
P.O. Box 277
Centreville, MI 49032-0277

DATE: April 20, 1998

TO: All Lower Peninsula Designated Solid Waste Planning Agency
Representatives

FROM: St. Joseph County Solid Waste Planning Committee

RE: Solid Waste Management Plan Import/Export Arrangements

The St. Joseph County Solid Waste Planning Committee intends on listing all Lower Peninsula Counties as authorized exporters of Type II solid waste to St. Joseph County. Westside Landfill, located near Three Rivers, is owned and operated by Waste Management of Michigan and has a licensed life capacity of approximately 12 years. In addition to the currently licensed capacity Westside has an additional 280 acres available for future development. Westside Landfill has a current annual cap of 1.75 million gate cubic yards of solid waste with St. Joseph County contributing approximately 255,000 gate cubic yards per year.

If your county wishes to utilize Westside Landfill as a disposal area St. Joseph County must be listed in your plan as an authorized import/export county. Arrangements for specific amounts of waste to be exported to Westside Landfill should be made with Waste Management 616-279-5444.

The St. Joseph County Solid Waste Planning Committee requests that reciprocal agreements, allowing St. Joseph County to export solid waste to your county, be included in your county plans for counties that wish to include St. Joseph County as an import/export county.

Please direct correspondence and inquires to:

Mr. Craig Laurent
Environmental Consultant
PO Box 44
Battle Creek, MI 49016
Phone 616-962-5082

Sincerely,

Craig Laurent, Environmental Consultant

Westside R.D.F.
P.O. Box 392
14094 M-60 West
Three Rivers, MI 49093
616/279-5444 • FAX: 616/273-1662



A Waste Management Company

April 21, 1998

Dean Holub
Solid Waste Coordinator
Kalamazoo County Government
201 West Kalamazoo Ave.
Kalamazoo, MI 49007

Dear Mr. Holub:

Westside RDF has accepted waste from Kalamazoo County for a number of years. The volume we have accepted is included in our annual volume as specified in the fact sheet.


In 1995 the St. Joseph County Plan was amended to allow our landfill to accept up to a combined total of 1,500,000 cubic yards of waste from any authorized counties in our plan. The only restriction that we have is that we will give first priority to St Joseph County solid waste should we reach the annual volume limit. I want to assure you that we are currently a long way from reaching the current limit.

We are, therefore, requesting authorization to accept up to 100% of the waste generated in Kalamazoo County, for the 10 year planning period. Waste acceptance would be subject to the annual volume cap authorized in the St. Joseph County Solid Waste Plan.

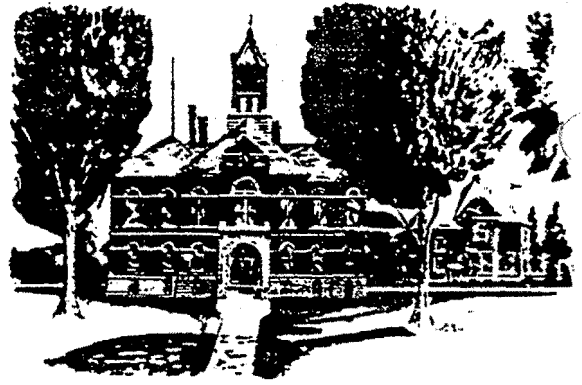
St. Joseph County has started the Solid Waste Management Plan update process. The current philosophy regarding waste acceptance will continue to be a part of the updated plan. We have also recently signed an amended Host Community Agreement with St. Joseph County that will allow us to increase our annual volume cap from 1,500,000 cubic yards to 1,750,000 cubic yards. This provision will also be included as part of the plan update. The volume increase will allow us to provide additional landfill disposal capacity for Southwest Michigan on a yearly basis.

If you have any questions, please give me a call.

Yours Truly, \


Tom Wilson
Site Manager

**BARRY
COUNTY
COURTHOUSE**
220 W. STATE STREET
HASTINGS, MICHIGAN 49058



May 28, 1998

Mr. Michael Swords - Chairman
Kalamazoo County Solid Waste Planning Committee
201 W. Kalamazoo Avenue
Kalamazoo, Mi. 49007

RECEIVED
JUN 05 A.M.
KALAMAZOO COUNTY
SOLID WASTE PLANNING COMMITTEE


Dear Mr. Swords,

Last year, the Department of Environmental Quality approved amendments to the Barry County Solid Waste Plan authorizing export of Solid waste from Barry County to all 82 counties in Michigan, and primary disposal at our landfill in Hastings from 19 Michigan counties - one of which is Kalamazoo County.

We respectfully request you take whatever actions are necessary to provide explicit authority for the exportation of solid waste from Kalamazoo County to Barry County. We realize you are commencing the process of updating your solid waste management plan and inclusion of our request in that update would be timely for our purposes.

If there is any further information you may need or if you would like to discuss this matter further, please do not hesitate to contact me at (616) 945-9516.

Sincerely,


V. Harry Adrounie, Ph.D
Chairman

cc: Mr. Dean Holub
Ms. Charlotte B Sumney

Ottawa County Environmental Health

Solid Waste Management
Program

Memorandum

*To: Solid Waste Management Planning
Committees/Designated Planning
Agencies for:*

*Allegan, Barry, Berrien, Branch,
Calhoun, Cass, Clare, Clinton, Eaton,
Gratiot, Ionia, Isabella, Kalamazoo, Kent
Lake, Mason, Mecosta, Muskegon,
Montcalm, Newago, Oceana, Osceola,
St. Joseph, Van Buren Counties.*

*From: Darwin J. Baas, Solid Waste Management
Coordinator* 

Date: Monday, June 22, 1998

*Subject: Ottawa County Import/Export
Authorizations for Type II/III Solid Waste*

In preparing the Solid Waste Management Plan Update, Ottawa County has recognized 24 counties within the disposal region for import and export authorization.

Importation of Out-of-County Solid Waste

Ottawa County has approved the counties listed above for disposal of Type II/III solid waste and authorizes solid waste from these counties to be deposited in licensed facilities located in Ottawa County. Solid waste may be imported from one or any combination of the above listed counties if explicitly authorized by the exporting county's Solid Waste Management Plan. Disposal of solid waste in licensed Type II facilities in Ottawa County is subject to an annual cap of 1,500,000 tons annually.

Exportation of Ottawa County Solid Waste

Ottawa County will authorize the exportation of up to 100 percent of the Ottawa County solid waste stream to any of the counties listed above whose Solid Waste Management Plan specifically authorize the acceptance of Ottawa County's solid waste.

Enclosed are copies of facility descriptions for the Type II landfills located in Ottawa County. We are requesting that you provide a facility description for each Type II and Type III landfill located within your county, provided the importation of Ottawa County solid waste will be authorized by your Plan. I will be calling you shortly regarding this information.

In the mean time, if you have any questions regarding the enclosed material, please feel free to call me at 616/393-5638.



DEPARTMENT OF ENVIRONMENT AND INFRASTRUCTURE SERVICES
PUBLIC WORKS DIVISION

110 NORTH FOURTH AVENUE
P.O. Box 8645, ANN ARBOR, MI 48107-8645

RECEIVED
AUG 17 A.M.

August 7, 1998

Mr. Dean Holub
Kalamazoo County Metropolitan Planning Agency
201 West Kalamazoo Avenue
Kalamazoo, MI 49007

Dear Mr. Holub,

In preparing its 1998 Part 115 Solid Waste Management Plan Update, Washtenaw County is considering recognizing all 83 counties in Michigan for import/export authorization. Exhibit A (attached) describes Washtenaw County's intended import/export authorizations, including quantities, for each county in the State.

Washtenaw County currently has one licensed and operational Type II landfill located within its borders, the Arbor Hills Landfill operated by Browning Ferris Industries. Per statutory requirements, it is necessary for both the generating and receiving county plans to explicitly authorize waste transfers and amounts. Washtenaw County is hereby requesting Kalamazoo County to authorize the receipt of 200,000 gate cubic yards of Washtenaw County solid waste per year into Kalamazoo County through explicit authorization in your solid waste plan. We propose to authorize the importation of 200,000 gate cubic yards per year of Kalamazoo County solid waste into Washtenaw County.

Washtenaw County intends to release the draft of its Plan Update in October of this year. In order to ensure that your County's disposal needs are included in our Plan, and that our needs are likewise included in your Plan, we would appreciate receiving written notice of your import/export intentions by September 1, 1998.

Thank you for your attention to this matter. If you have any questions or concerns, please contact me at (734) 994-2398 or via e-mail at todds@co.washtenaw.mi.us.

Sincerely,

A handwritten signature in dark ink, appearing to read "Susan Todd".

Susan Todd
Solid Waste Coordinator
Enc.

SOLID WASTE DIVISION

Waste-to-Energy Facility
District Heating and
Cooling Operations
Landfill Operations
Recycling
Resource Recovery



WATER AND SEWER DIVISION

Financing
Construction
Operation

Board of Public Works

JERRY O. KOOIMAN
Chairman

ROGER G. LANINGA
Vice Chairman

BEVERLY R. REKENY
Secretary

CHERRY H. JACOBUS

KATHERINE KUHN

PAUL McGUIRE

DAVID H. MORREN

CURT A. KEMPPAINEN
Director

September 1, 1998

Dean Holub
Kalamazoo Metro County Planning Agency
201 West Kalamazoo Avenue
Kalamazoo, MI 49007

Re: Solid Waste Management Plan Committee

Dear Mr. Holub:

In preparing its 1998 Part 115 Solid Waste Management Plan Update and as part of the County's integrated solid waste system, Kent County is recognizing 14 counties in Michigan for import and/or export authorization. Exhibit A (attached) describes Kent County's intended import and/or export authorizations for each county recognized in their Plan limited to the conditions as stated. Also included are Tables 1-A and 2-A from the updated Plan.

In order to ensure that your County is included in our Plan, and that our needs are likewise included in your Plan, we would appreciate receiving written notice of your import and/or export intentions by October 5, 1998.

Thank you for your attention to this matter. If you have any questions or concerns, please contact me.

Best regards,

KENT COUNTY DEPARTMENT OF PUBLIC WORKS

A handwritten signature in cursive script that reads "Douglas G. Wood".

Douglas G. Wood
Deputy Director

**Kent County
Solid Waste Import Condition***

Kent County has had an integrated solid waste management system which includes the Kent County Waste-to-Energy Facility, the South Kent Landfill, the North Kent Transfer Station, the Material Recovery Facility, the Household Hazardous Waste Program, perpetual care for closed landfills, and public education programs. Through this integrated system, Kent County takes a comprehensive approach to the management of solid waste within the County.

As part of the County's integrated system, the 1990 Solid Waste Management Plan permitted a limited amount of waste generated from several surrounding counties to be imported into Kent County and disposed of in the South Kent Landfill. These counties were Allegan, Ottawa, Montcalm, Ionia and Barry.

This Plan will recognize the following counties as importers of solid waste to Kent County facilities: Allegan, Ottawa, Montcalm, Ionia, Barry, Calhoun, Clinton, Eaton, Gratiot, Kalamazoo, Mecosta, Newaygo, Oceana and Van Buren.

Kent County's first and main concern is to provide long term disposal for the residents of the County (20 years). In the event, as determined solely by the Board of Public Works, that long term disposal is not being met, any contracts for importation with the above mentioned counties will be reviewed or not renewed.



BOARD OF COMMISSIONERS MEMORANDUM

TO: Dean Holub

FROM: Ann Root *Ann*

DATE: September 2, 1998

SUBJECT: Board Action

At its meeting of September 1, 1998, the Kalamazoo County Board of Commissioners approved the proposed Solid Waste Management Plan Update dated May 1998, subject to the additions and modifications recommended by the Solid Waste Management Planning Committee (SWMPC), and authorized the SWMPC to submit said Plan Update to all local units of government in the County for review and action.

If you have any questions regarding this action, please feel free to contact the Board Office.

ATTACHMENT D-20

RESOLUTION

1998 KALAMAZOO COUNTY SOLID WASTE MANAGEMENT PLAN UPDATE

WHEREAS, On May 1, 1979, the Kalamazoo County Board of Commissioners adopted a Notice of Intent which required filing a Solid Waste Management Plan in accordance with Section 24 of P.A. 641 of 1978, as amended (subsequently reenacted as P.A. 451 of 1994); and

WHEREAS, said Act requires that each Solid Waste Management Plan be updated every five (5) years; and

WHEREAS, the Board authorized the Metropolitan County Planning Commission as the "designated planning agency" responsible for the oversight of a Solid Waste Management Plan Update for the County of Kalamazoo; and

WHEREAS, the Board appointed a Solid Waste Management Planning Committee to prepare the actual document in accordance with Section 11534 of P.A. 451 of 1994, as amended; and

WHEREAS, a Solid Waste Management Plan Update has been prepared for Kalamazoo County and subsequently distributed to all local units of government in the County; and

WHEREAS, the Plan provides for the basic solid waste collection, disposal and management system needs of all communities within Kalamazoo County both in the short- (5 year) and long-range (10 year) time periods; and

WHEREAS, the Plan has been approved by the Kalamazoo County Solid Waste Management Planning Committee and the Kalamazoo County Board of Commissioners in accordance with Section 11536 of P.A. 451 of 1994, as amended.

NOW, THEREFORE BE IT RESOLVED that the Galesburg City Council
(board/commission/council)

of the City of Galesburg does hereby approve the 1998 Solid
(Local unit of government)

Waste Management Plan Update for Kalamazoo County, Michigan, dated September 1998, for the purpose of meeting the objectives of Section 11539a. of P.A. 451 of 1994, as amended, and the rules promulgated thereunder.

CITY OF KALAMAZOO

RESOLUTION NO. 98-145**A RESOLUTION APPROVING THE 1998 KALAMAZOO COUNTY
SOLID WASTE MANAGEMENT PLAN UPDATE**

Minutes of a regular meeting of the City Commission of the City of Kalamazoo held on December 7 1998, at 7:00 o'clock p.m., local time, at the City Hall.

PRESENT, Commissioners: Cooney, Gordon, Hahn, Heilman, Teeter,
Vice Mayor McKinney, Mayor Jones

ABSENT, Commissioners: None

WHEREAS, on May 1, 1979, the Kalamazoo County Board of Commissioners adopted a Notice of Intent which required filing a Solid Waste Management Plan in accordance with Section 24 of P.A. 641 of 1978, as amended (subsequently reenacted as P.A. 451 of 1994); and

WHEREAS, said Act requires that each Solid Waste Management Plan be updated every five (5) years; and

WHEREAS, the Board authorized the Metropolitan County Planning Commission as the "designated planning agency" responsible for the oversight of a Solid Waste Management Plan Update for the County of Kalamazoo; and

WHEREAS, the Board appointed a Solid Waste Management Planning Committee to prepare the actual document in accordance with Section 11534 of P.A. 451 of 1994, as amended; and

WHEREAS, a Solid Waste Management Plan Update has been prepared for Kalamazoo County and subsequently distributed to all local units of government in the County; and

WHEREAS, the Plan provides for the basic solid waste collection, disposal and management system needs of all communities within Kalamazoo County both in the short and long-range (5-10 year) time periods; and

WHEREAS, the Plan has been approved by the Kalamazoo County Solid Waste Management Planning Committee and the Kalamazoo County Board of Commissioners in accordance with Section 11536 of P.A. 451 of 1994, as amended.

NOW, THEREFORE, BE IT RESOLVED, that the City Commission of the City of Kalamazoo does hereby approve the 1998 Solid Waste Management Plan Update for Kalamazoo County, Michigan, dated September 1998, for the purpose of meeting the objectives of Section 11539a of P.A. 451 of 1994, as amended, and the rules promulgated thereunder.

The above resolution was offered by Commissioner Gordon and supported by Commissioner Hahn.

AYES: Commissioners, Cooney, Gordon, Hahn, Heilman, Teeter, Vice Mayor McKinney, Mayor Jones

NAYS: Commissioners, None

ABSTAIN: Commissioners, None

CERTIFICATE

I hereby certify that the foregoing is a true and complete copy of a resolution adopted at the regular meeting of the City Commission of the City of Kalamazoo, Kalamazoo County, Michigan, held on the December 7, 1998. Public notice was given and the meeting was conducted in full compliance with the Michigan Open Meetings Act (PA 267, 1976). Minutes of the meeting will be available as required by the Act.



Nancy Collins, City Clerk

RESOLUTION
CITY OF PARCHMENT
1998 KALAMAZOO COUNTY SOLID WASTE MANAGEMENT PLAN UPDATE

At a regular meeting of the City Commission of the City of Parchment held on Monday, October 5, 1998 it was moved by Commissioner DeGraw and supported by Commissioner McCue to adopt the following resolution:

WHEREAS, On May 1, 1979, the Kalamazoo County Board of Commissioners adopted a Notice of Intent which required filing a Solid Waste Management Plan in accordance with Section 24 P.A. 641 of 1978, as amended (subsequently reenacted as P.A. 451 of 1994); and

WHEREAS, said Act requires that each Solid Waste Management Plan be updated every five (5) years; and

WHEREAS, the Board authorized the Metropolitan County Planning Commission as the "designated planning agency" responsible for the oversight of a Solid Waste Management Plan Update for the County of Kalamazoo; and

WHEREAS, the Board appointed a Solid Waste Management Planning Committee to prepare the actual document in accordance with Section 11534 of P.A. 451 of 1994, as amended; and

WHEREAS, a Solid Waste Management Plan Update has been prepared for Kalamazoo County and subsequently distributed to all local units of government in the County; and

WHEREAS, the Plan provides for the basic solid waste collection, disposal and management system needs of all communities within Kalamazoo County both in the short-range (5-year) and long-range (10 year) time periods; and

WHEREAS, the Plan has been approved by the Kalamazoo County Solid Waste Management Planning Committee and the Kalamazoo County Board of Commissioners in accordance with Section 11536 of P.A. 451 of 1994, as amended.

NOW, THEREFORE BE IT RESOLVED that the City Commission of the City of Parchment does hereby approve the 1998 Solid Waste Management Plan Update for Kalamazoo County, Michigan, dated September 1998 for the purpose of meeting the objectives of Section 11539a. of P.A. 451 of 1994, as amended, and the rules promulgated thereunder.

The roll call vote was as follows:

Ayes:	Banner, Bultje, DeGraw, Hageman, Heasley, McCue, Pressley.
Nays:	None
Absent:	None
Abstain:	None

Resolution Declared Adopted October 5, 1998.


Curt Flowers, City Clerk



Office of the City Clerk

November 24, 1998

Mr. Dean Holub
Department of Planning & Community Development
201 West Kalamazoo Avenue
Kalamazoo MI 49007

Dear Mr. Holub:

RE: Solid Waste Management Plan Update

On November 3, Portage City Council approved the **Solid Waste Management Plan Update** as submitted for review and action.

If you have any questions, please do not hesitate to call me at 329-4511.

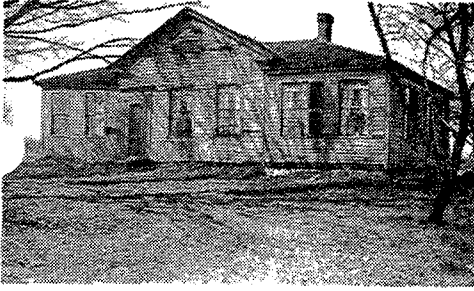
Sincerely,

A handwritten signature in black ink, appearing to read 'James R. Hudson', is written over a horizontal line.

James R. Hudson
City Clerk

LeHolubPlanningDeptCo.doc/ajk

c Dennis Durham, Assistant City Manager



HISTORIC OLD UNDERGROUND RAILROAD
STATION OF EARLY CIVIL WAR DAYS

VILLAGE OF SCHOOLCRAFT

KALAMAZOO COUNTY

... MICHIGAN ...

ON HIGHWAY US-131 - SOUTHWESTERN MICHIGAN GATEWAY TO THE SOUTH, MID-WEST, WEST

RESOLUTION NOVEMBER 16, 1998

OFFICE OF THE CLERK
679-4304

1998 KALAMAZOO COUNTY SOLID WASTE MANAGEMENT PLAN UPDATE

WHEREAS, On May 1, 1979, the Kalamazoo County Board of Commissioners adopted a Notice of Intent which required filing a Solid Waste Management Plan in accordance with Section 24 of P.A. 641 of 1978, as amended (subsequently reenacted as P.A. 451 of 1994); and

WHEREAS, said Act requires that each Solid Waste Management Plan be updated every five (5) years; and

WHEREAS, the Board authorized the Metropolitan County Planning Commission as the "designated planning agency" responsible for the oversight of a Solid Waste Management Plan Update for the County of Kalamazoo; and

WHEREAS, the Board appointed a Solid Waste Management Planning Committee to prepare the actual document in accordance with Section 11534 of P.A. 451 of 1994, as amended; and

WHEREAS, a Solid Waste Management Plan Update has been prepared for Kalamazoo County and subsequently distributed to all local units of government in the County; and

WHEREAS, the Plan provides for the basic solid waste collection, disposal and management system needs of all communities within Kalamazoo County both in the short- (5 year) and long-range (10 year) time periods; and

WHEREAS, the Plan has been approved by the Kalamazoo County Solid Waste Management Planning Committee and the Kalamazoo County Board of Commissioners in accordance with Section 11536 of P.A. 451 of 1994, as amended.

NOW, THEREFORE BE IT RESOLVED that the Council of the Village of Schoolcraft does hereby approve the 1998 Solid Waste Management Plan Update of Kalamazoo County, Michigan, dated September 1998, for the purpose of meeting the objectives of Section 11539a of P.A. 451 of 1994, as amended, and the rules promulgated thereunder.

VILLAGE OF VICKSBURG
RESOLUTION 10-1-98-1
A RESOLUTION APPROVING THE 1998 KALAMAZOO COUNTY
SOLID WASTE MANAGEMENT PLAN UPDATE

WHEREAS, on May 1, 1979, the Kalamazoo County Board of Commissioners adopted a notice of Intent which required filing a Solid Waste Management Plan in accordance with Section 24 of P.A. 641 of 1978, as amended (subsequently reenacted as P.A. 451 of 1994); and

WHEREAS, said Act requires that each Solid Waste Management Plan be updated every five (5) years; and

WHEREAS, the Board authorized the Metropolitan County Planning Commission as the "designated planning agency" responsible for the oversight of a Solid Waste Management Plan Update for the County of Kalamazoo; and

WHEREAS, the Board appointed a Solid Waste Management Planning Committee to prepare the actual document in accordance with Section 11534 of P.A. 451 of 1994, as amended; and

WHEREAS, a Solid Waste Management Plan Update has been prepared for Kalamazoo County and subsequently distributed to all local units of government in the County; and

WHEREAS, the Plan provides for the basic solid waste collection, disposal, and management system needs of all communities within Kalamazoo county both in the short- (5 year) and long-range (10 year) time periods; and

WHEREAS, the Plan has been approved by the Kalamazoo County Solid Waste Management Planning Committee and the Kalamazoo County Board of Commissioners in accordance with Section 11536 of P.A. 451 of 1994, as amended.

NOW, THEREFORE, BE IT RESOLVED that the Village Council of the Village of Vicksburg does hereby approve the 1998 Solid Waste Management Plan Update for Kalamazoo County, Michigan, dated September 1998, for the purpose of meeting the objectives of Section 11539a. of P.A. 451 of 1994, as amended, and the rules promulgated thereunder.

RESOLUTION 10-1-98-1 , PAGE #2

I, HEREBY CERTIFY that the foregoing is a true and complete copy of a resolution adopted by the Village Council of the Village of Vicksburg at a regular meeting held on October 5, 1998. By a roll call vote:

MOTION: Trustee Margaret Merrill

SUPPORT: Trustee Tim Pool

AYES: Seven (7) Trustees: Steve Beebe, Sheldon Durham, Rachel Freeman, Margaret Merrill, Tim Pool, Jody Tuinier, and President Ted Hammond

NAYS: None (0):

ABSTAINING: None (0):

O. John Bretz
O. John Bretz, Village Clerk



RESOLUTION

1998 KALAMAZOO COUNTY SOLID WASTE MANAGEMENT PLAN UPDATE

WHEREAS, On May 1, 1979, the Kalamazoo County Board of Commissioners adopted a Notice of Intent which required filing a Solid Waste Management Plan in accordance with Section 24 of P.A. 641 of 1978, as amended (subsequently reenacted as P.A. 451 of 1994); and

WHEREAS, said Act requires that each Solid Waste Management Plan be updated every five (5) years; and

WHEREAS, the Board authorized the Metropolitan County Planning Commission as the "designated planning agency" responsible for the oversight of a Solid Waste Management Plan Update for the County of Kalamazoo; and

WHEREAS, the Board appointed a Solid Waste Management Planning Committee to prepare the actual document in accordance with Section 11534 of P.A. 451 of 1994, as amended; and

WHEREAS, a Solid Waste Management Plan Update has been prepared for Kalamazoo County and subsequently distributed to all local units of government in the County; and

WHEREAS, the Plan provides for the basic solid waste collection, disposal and management system needs of all communities within Kalamazoo County both in the short- (5 year) and long-range (10 year) time periods; and


WHEREAS, the Plan has been approved by the Kalamazoo County Solid Waste Management Planning Committee and the Kalamazoo County Board of Commissioners in accordance with Section 11536 of P.A. 451 of 1994, as amended.

NOW, THEREFORE BE IT RESOLVED that the Board
(board/commission/council)
of the Township of Brady
(Local unit of government) does hereby approve the 1998 Solid

Waste Management Plan Update for Kalamazoo County, Michigan, dated September 1998, for the purpose of meeting the objectives of Section 11539a. of P.A. 451 of 1994, as amended, and the rules promulgated thereunder.

Motion by Guthrie, seconded by Maturen to accept Resolution: 12/1/98

Guthrie	YES
Dougherty	YES
Maturen	YES
Vermeulen	YES
Parker	YES


Brady Township Clerk
Cande Vermeulen

CERTIFICATE

I hereby certify that the foregoing is a true and complete copy of a resolution adopted by the Township Board of Brady Township at a Meeting held on December 1, 1998, and that said meeting was conducted and public notice of said meeting was given pursuant to and in full compliance with the Open Meeting Act, being ACT 267, Public Acts of Michigan, 1976, and that the minutes of said meeting were kept and will be or have been made available as required by said Act.


Cande L. Vermeulen, Township Clerk

RESOLUTION

1998 KALAMAZOO COUNTY SOLID WASTE MANAGEMENT PLAN UPDATE

WHEREAS, On May 1, 1979, the Kalamazoo County Board of Commissioners adopted a Notice of Intent which required filing a Solid Waste Management Plan in accordance with Section 24 of P.A. 641 of 1978, as amended (subsequently reenacted as P.A. 451 of 1994); and

WHEREAS, said Act requires that each Solid Waste Management Plan be updated every five (5) years; and

WHEREAS, the Board authorized the Metropolitan County Planning Commission as the "designated planning agency" responsible for the oversight of a Solid Waste Management Plan Update for the County of Kalamazoo; and

WHEREAS, the Board appointed a Solid Waste Management Planning Committee to prepare the actual document in accordance with Section 11534 of P.A. 451 of 1994, as amended; and

WHEREAS, a Solid Waste Management Plan Update has been prepared for Kalamazoo County and subsequently distributed to all local units of government in the County; and

WHEREAS, the Plan provides for the basic solid waste collection, disposal and management system needs of all communities within Kalamazoo County both in the short- (5 year) and long-range (10 year) time periods; and

WHEREAS, the Plan has been approved by the Kalamazoo County Solid Waste Management Planning Committee and the Kalamazoo County Board of Commissioners in accordance with Section 11536 of P.A. 451 of 1994, as amended.

NOW, THEREFORE BE IT RESOLVED that the Board
(board/commission/council)
of the Chimney Twp. does hereby approve the 1998 Solid
(Local unit of government)

Waste Management Plan Update for Kalamazoo County, Michigan, dated September 1998, for the purpose of meeting the objectives of Section 11539a. of P.A. 451 of 1994, as amended, and the rules promulgated thereunder.

John P. Simmons *Dec 8 - 1998*

**EXCERPT OF MINUTES OF THE REGULAR MEETING OF THE
CHARTER TOWNSHIP OF COMSTOCK BOARD
KALAMAZOO COUNTY, MICHIGAN**

SEPTEMBER 30, 1998

The Regular Meeting of the Charter Township of Comstock Board was called to order at 4:00 p.m. Wednesday, September 30, 1998 at the Township Hall, 6138 King Highway, by the Supervisor.

Board Members Present:	Timothy J. Hudson, Supervisor
	Stephen M. French, Clerk
	Janice Boers Shattuck, Treasurer
	Jeffrey D. Bogema, Trustee
	Shelly Pierce Cornell, Trustee
	Ellen Eggleston, Trustee
	William G. Shields, Trustee

Board Members Absent:	None.
-----------------------	-------

NEW BUSINESS

KALAMAZOO COUNTY SOLID WASTE MANAGEMENT PLAN UPDATE

The Supervisor stated that the Kalamazoo County Board of Commissioners had provided the Township Board with a Resolution adopting the new five year plan regarding solid waste management in Kalamazoo County. The Supervisor stated that, in addition to the Board of Commissioners, the area township supervisors have recommended its adoption.

The following Resolution was then moved by Bogema and seconded by Cornell:

1998 KALAMAZOO COUNTY SOLID WASTE MANAGEMENT PLAN UPDATE

WHEREAS, On May 1, 1979 the Kalamazoo County Board of Commissioners adopted a Notice of intent which required filing a Solid Waste Management Plan in accordance with Section 24 of P.A. 641 of 1978, as amended (subsequently reenacted as P.A. 451 of 1994); and

WHEREAS, said Act requires that each Solid Waste Management Plan be updated every five (5) years; and

WHEREAS, the Board authorized the Metropolitan County Planning Commission as the "designated planning agency" responsible for the oversight of a Solid Waste Management Plan Update for the County of Kalamazoo; and

WHEREAS, the Board appointed a Solid Waste Management Planning Committee to prepare the actual document in accordance with Section 11534 of P.A. 451 of 1994, as amended; and

WHEREAS, a Solid Waste Management Plan Update has been prepared for Kalamazoo County and subsequently distributed to all local units of government in the County; and

WHEREAS, the Plan provides for the basic solid waste collection, disposal and management system needs of all communities within Kalamazoo County both in the short (5 year) and long-range (10 year) time periods; and

WHEREAS, the Plan has been approved by the Kalamazoo County Solid Waste Management Planning Committee and the Kalamazoo County Board of Commissioners in accordance with Section 11536 of P.A. 451 of 1994, as amended.

NOW, THEREFORE BE IT RESOLVED that the Comstock Township Board does hereby approve the 1998 Solid Waste Management Plan Update for Kalamazoo County, Michigan dated September 1998, for the purpose of meeting the objectives of Section 11539a. of P.A. 451 of 1994, as amended, and the rules promulgated thereunder.

On a roll call vote of the Resolution, the following voted, "Aye": Bogema, Cornell, Eggleston, French, Hudson, Shattuck, Shields.

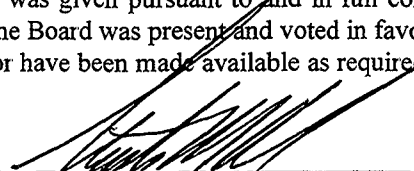
The following Board Members voted, "Nay": None.

The following Board Members were absent: None.

The Supervisor declared the Resolution adopted.

CERTIFICATE

I hereby certify that the foregoing constitutes a true and complete copy of a Resolution adopted at a regular meeting of the Comstock Charter Township Board held at the Township Hall on Wednesday, September 30, 1998, that said meeting was conducted and public notice of said meeting was given pursuant to and in full compliance with the Open Meetings Act, being 1976 PA 267; that a quorum of the Board was present and voted in favor of said Resolution; and that minutes of said meeting were kept and will be or have been made available as required by said Open Meetings Act.


STEPHEN M. FRENCH, Clerk
Charter Township of Comstock

RESOLUTION

1998 KALAMAZOO COUNTY SOLID WASTE MANAGEMENT PLAN UPDATE

WHEREAS, On May 1, 1979, the Kalamazoo County Board of Commissioners adopted a Notice of Intent which required filing a Solid Waste Management Plan in accordance with Section 24 of P.A. 641 of 1978, as amended (subsequently reenacted as P.A. 451 of 1994); and

WHEREAS, said Act requires that each Solid Waste Management Plan be updated every five (5) years; and

WHEREAS, the board authorized the Metropolitan County Planning Commission as the "designated planning agency" responsible for the oversight of a Solid Waste Management Plan Update for the County of Kalamazoo; and

WHEREAS, the Board appointed a Solid Waste Management Planning Committee to prepare the actual document in accordance with Section 11534 of P.A. 451 of 1994, as amended; and

WHEREAS, a Solid Waste Management Plan Update has been *prepared for* Kalamazoo County and subsequently distributed to all local units of government in the County; and

WHEREAS, the Plan provides for the basic solid waste collection, disposal and management system needs of all communities within Kalamazoo County both in the short (5 year) and long range (10 year) time periods; and

WHEREAS, the Plan has been approved by the Kalamazoo County Solid Waste Management Planning Committee and the Kalamazoo County Board of Commissioners in accordance with Section 11536 of P.A. 451 of 1994, as amended.

NOW, THEREFORE BE IT RESOLVED that the Township board of the Township of Cooper does hereby approve the 1998 Solid

Waste Management Plan Update for Kalamazoo County, Michigan, dated September 1 1998, for the purpose of meeting the objectives of Section 11 539a of P.A. 451 of 1994, as amended, and the rules promulgated thereunder.

Dated this 14th day of September, 1998.

Charter Township of Kalamazoo

Office of the Supervisor
Gary L. Cramer

ATTACHMENT D-30

Telephone: (616) 381-8083
Fax: (616) 381-6930

E-Mail: "Ktwp@telecity.org"
Internet: "http://www.telecity.org/kalamazootownship/"

1720 Riverview Drive
Kalamazoo, Michigan 49004-1099

Resolution

1998 Kalamazoo County Solid Waste Management Plan Update November 09, 1998

WHEREAS, On May 1, 1979, the Kalamazoo County Board of Commissioners adopted a Notice of Intent which required filing a Solid Waste Management Plan in accordance with Section 24 of P.A. 641 of 1978, as amended (subsequently reenacted as P.A. 451 of 1994); and

WHEREAS, said Act requires that each Solid Waste Management Plan be updated every five (5) years; and

WHEREAS, the Board authorized the Metropolitan County Planning Commission as the "designated planning agency" responsible for the oversight of Solid Waste Management Plan Update for the County of Kalamazoo; and

WHEREAS, the Board appointed a Solid Waste Management Planning Committee to prepare the actual document in accordance with Section 11534 of P.A. 451 of 1994, as amended; and

WHEREAS, a Solid Waste Management Plan Update has been prepared for Kalamazoo County and subsequently distributed to all local units of government in the County; and

WHEREAS, the Plan provides for the basic solid waste collection, disposal and management system needs of all communities within Kalamazoo County both in the short-range (5 year) and long-range (10 year) time periods; and

WHEREAS, the Plan has been approved by the Kalamazoo County Solid Waste Management Planning Committee and the Kalamazoo County Board of Commissioners in accordance with Section 11536 of P.A. 451 of 1994, as amended.

NOW, THEREFORE, WE, . . . the Charter Township of Kalamazoo do hereby approve the 1998 Solid Waste Management Plan Update for Kalamazoo County, Michigan, dated September 1998, for the purpose of meeting the objectives of Section 11539a. of P.A. 451 of 1994, as amended, and the rules promulgated thereunder.



Gary L. Cramer - Supervisor

"A Quality Township Striving to Meet the Needs of Its Citizens."

RESOLUTION

1998 KALAMAZOO COUNTY SOLID WASTE MANAGEMENT PLAN UPDATE

WHEREAS, On May 1, 1979, the Kalamazoo County Board of Commissioners adopted a Notice of Intent which required filing a Solid Waste Management Plan in accordance with Section 24 of P.A. 641 of 1978, as amended (subsequently reenacted as P.A. 451 of 1994); and

WHEREAS, said Act required that each Solid Waste Management Plan to be updated every five (5) years; and

WHEREAS, the Board authorized the Metropolitan County Planning Commission as the "designated planning agency" responsible for the oversight of a Solid Waster Management Plan Update for the County of Kalamazoo; and

WHEREAS, the Board appointed a Solid Waste Management Planning Committee to prepare the actual document in accordance with Section 11534 of P.A. 451 of 1994, as amended; and

WHEREAS a Solid Waste Management Plan Update has been prepared for Kalamazoo County and subsequently distributed to all local units of government in the County; and

WHEREAS the Plan provides for the basic solid waste collection, disposal and management system needs of all communities within Kalamazoo County both in the short- (5 year) and (10 year time periods; and

WHEREAS the Plan has been approved by the Kalamazoo County Solid Waste Management Planning Committee and the Kalamazoo County Board of Commissioners in accordance with Section 11536 of P.A. 451 of 1994, as amended.

NOW, THEREFORE BE IT RESOLVED that the Board of Trustees of the TOWNSHIP OF OSHTEMO does hereby approved the 1998 Solid Waste Management Plan Update for Kalamazoo County Michigan, dated September 1998, for the purpose of meeting the objectives of Section 11539a. Of P.A. 451 of 1994, as amended, and the rules promulgated thereunder.

Motion was made by Block, seconded by Johnson,
to adopt the foregoing Resolution.

Upon roll-call vote, the following voted "AYE: Block Johnson Bushouse
Branch Anderson Fleckenstein

The following voted "NAY" none

Absent: Brown

The Supervisor declared the motion carried and the Resolution duly adopted.

Elaine J. Branch
Elaine J. Branch, Clerk
OSHTEMO CHARTER TOWNSHIP

CERTIFICATE

ELAINE J. BRANCH, the duly elected and acting Clerk of the Charter Township of Oshtemo, Kalamazoo County Michigan hereby certifies that the foregoing is a true and correct copy of an Excerpt of the Minutes of a regular meeting of the Oshtemo Charter Township Board held on September 22, 1998, at which a quorum was present.

Elaine J. Branch
Elaine J. Branch, Clerk
OSHTEMO CHARTER TOWNSHIP

RESOLUTION PT 12-98

1998 KALAMAZOO COUNTY SOLID WASTE MANAGEMENT PLAN UPDATE

WHEREAS, On May 1, 1979, the Kalamazoo County Board of Commissioners adopted a Notice of Intent which required filing a Solid Waste Management Plan in accordance with Section 24 of P.A. 641 of 1978, as amended (subsequently reenacted as P.A. 451 of 1994); and

WHEREAS, said Act requires that each Solid Waste Management Plan be updated every five (5) years; and

WHEREAS, the Board authorized the Metropolitan County Planning Commission as the "designated planning agency" responsible for the oversight of a Solid Waste Management Plan Update for the County of Kalamazoo; and

WHEREAS, the Board appointed a Solid Waste Management Planning Committee to prepare the actual document in accordance with Section 11534 of P.A. 451 of 1994, as amended; and

WHEREAS, a Solid Waste Management Plan Update has been prepared for Kalamazoo County and subsequently distributed to all local units of government in the County; and

WHEREAS, the Plan provides for the basic solid waste collection, disposal and management system needs of all communities within Kalamazoo County both in the short- (5 year) and long-range (10 year) time periods; and

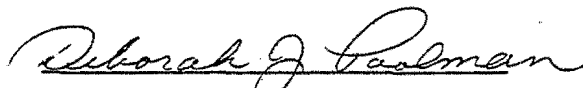
WHEREAS, the Plan has been approved by the Kalamazoo County Solid Waste Management Planning Committee and the Kalamazoo County Board of Commissioners in accordance with Section 11536 of P.A. 451 of 1994, as amended.

NOW, THEREFORE BE IT RESOLVED that the board
(board/commission/council)
of the Township of Pavilion does hereby approve the 1998 Solid
(Local unit of government)
Waste Management Plan Update for Kalamazoo County, Michigan, dated
September 1998, for the purpose of meeting the objectives of Section 11539a. of
P.A. 451 of 1994, as amended, and the rules promulgated thereunder.

State of Michigan)
County of Kalamazoo)

I, the undersigned, the duly qualified and acting Clerk of the Township of Pavilion, do hereby certify that the foregoing is a true copy of a Resolution adopted by the Township Board at a meeting held on the 12th day of October 1998, the original of this resolution is on file in my office.

IN WITNESS WHEREOF, I have hereunder affixed my official signature the 12th day of October 1998.



Deborah J. Poolman

Pavilion Township Clerk

RICHLAND TOWNSHIP

7401 North 32nd Street
Richland, Michigan 49083-9701
(616) 629-4921 • FAX (616) 629-5993

October 8, 1998

Kalamazoo County Department
of Planning & Community Development
201 West Kalamazoo Avenue
Kalamazoo, MI 49007

The following resolution was passed by the Richland Township Board at a regular meeting held October 6, 1998:

Light moved, Kaywood seconded, approval of the following resolution:

WHEREAS, on May 1, 1979, the Kalamazoo County Board of Commissioners adopted a Notice of Intent which required filing a Solid Waste Management Plan in accordance with Section 24 of PA 641 of 1978, as amended (subsequently reenacted as PA 451 of 1994); and

WHEREAS, said Act requires that each Solid Waste Management Plan be updated every five (5) years; and

WHEREAS, the Board authorized the Metropolitan County Planning Commission as the "designated planning agency" responsible for the oversight of a Solid Waste Management Plan Update for the County of Kalamazoo; and

WHEREAS, the Board appointed a Solid Waste Management Planning Committee to prepare the actual document in accordance with Section 11534 of PA 451 of 1994, as amended; and

WHEREAS, a Solid Waste Management Plan Update has been prepared for Kalamazoo County and subsequently distributed to all local units of government in the County; and

WHEREAS, the Plan provides for the basic solid waste collection, disposal and management system needs of all communities within Kalamazoo County both in the short- (5 year) and long-range (10 year) time periods; and

WHEREAS, the Plan has been approved by the Kalamazoo County Solid Waste Management Planning Committee and the Kalamazoo County Board of Commissioners in accordance with Section 11536 of PA 451 of 1994, as amended.

NOW, THEREFORE BE IT RESOLVED that the Richland Township Board of Trustees does hereby approve the 1998 Solid Waste Management Plan Update for Kalamazoo County, Michigan, dated September 1998, for the purpose of meeting the objectives of Section 11539a. of PA 451 of 1994, as amended, and the rules promulgated thereunder.

AYES: Stafford, Hinklin, Blanchard, Light, Kaywood

NAYS: None

The Supervisor declared the Resolution adopted.

Jacqueline Light
Richland Township Clerk

RESOLUTION

1998 KALAMAZOO COUNTY SOLID WASTE MANAGEMENT PLAN UPDATE

WHEREAS, On May 1, 1979, the Kalamazoo County Board of Commissioners adopted a Notice of Intent which required filing a Solid Waste Management Plan in accordance with Section 24 of P.A. 641 of 1978, as amended (subsequently reenacted as P.A. 451 of 1994); and

WHEREAS, said Act requires that each Solid Waste Management Plan be updated every five (5) years; and

WHEREAS, the Board authorized the Metropolitan County Planning Commission as the "designated planning agency" responsible for the oversight of a Solid Waste Management Plan Update for the County of Kalamazoo; and

WHEREAS, the Board appointed a Solid Waste Management Planning Committee to prepare the actual document in accordance with Section 11534 of P.A. 451 of 1994, as amended; and

WHEREAS, a Solid Waste Management Plan Update has been prepared for Kalamazoo County and subsequently distributed to all local units of government in the County; and


WHEREAS, the Plan provides for the basic solid waste collection, disposal and management system needs of all communities within Kalamazoo County both in the short- (5 year) and long-range (10 year) time periods; and

WHEREAS, the Plan has been approved by the Kalamazoo County Solid Waste Management Planning Committee and the Kalamazoo County Board of Commissioners in accordance with Section 11536 of P.A. 451 of 1994, as amended.

NOW, THEREFORE BE IT RESOLVED that the BOARD
(board/commission/council)
of the TOWNSHIP OF ROSS does hereby approve the 1998 Solid
(Local unit of government)

Waste Management Plan Update for Kalamazoo County, Michigan, dated September 1998, for the purpose of meeting the objectives of Section 11539a. of P.A. 451 of 1994, as amended, and the rules promulgated thereunder.

ADOPTED NOVEMBER 10, 1998


LINDA ARMINTROUT, SUPERVISOR

TOWNSHIP OF SCHOOLCRAFT

Kalamazoo County, Michigan

50 EAST VW AVENUE, VICKSBURG, MICHIGAN 49097

Office of
Clerk

Phone: (616) 649-1276
(616) 342-6185

December 10, 1998

Michael Swords, Chairman
Kalamazoo County Solid Waste Management Planning Committee
201 West Kalamazoo Ave.
Kalamazoo, MI 49007

Dear Mr. Swords:

Please be advised that the Schoolcraft Township Board of Trustees at its December 10, 1998 meeting approved the 1998 Solid Waste Management Plan Update for Kalamazoo County, Michigan, dated September 1998.

If you have any questions regarding this matter, please don't hesitate to call.

Sincerely,

Kathleen F. Cook

Kathleen F. Cook
Schoolcraft Township Clerk

RESOLUTION

1998 KALAMAZOO COUNTY SOLID WASTE MANAGEMENT PLAN UPDATE

WHEREAS, On May 1, 1979, the Kalamazoo County Board of Commissioners adopted a Notice of Intent which required filing a Solid Waste Management Plan in accordance with Section 24 of P.A. 641 of 1978, as amended (subsequently reenacted as P.A. 451 of 1994); and

WHEREAS, said Act requires that each Solid Waste Management Plan be updated every five (5) years; and

WHEREAS, the Board authorized the Metropolitan County Planning Commission as the "designated planning agency" responsible for the oversight of a Solid Waste Management Plan Update for the County of Kalamazoo; and

WHEREAS, the Board appointed a Solid Waste Management Planning Committee to prepare the actual document in accordance with Section 11534 of P.A. 451 of 1994, as amended; and

WHEREAS, a Solid Waste Management Plan Update has been prepared for Kalamazoo County and subsequently distributed to all local units of government in the County; and

WHEREAS, the Plan provides for the basic solid waste collection, disposal and management system needs of all communities within Kalamazoo County both in the short- (5 year) and long-range (10 year) time periods; and

WHEREAS, the Plan has been approved by the Kalamazoo County Solid Waste Management Planning Committee and the Kalamazoo County Board of Commissioners in accordance with Section 11536 of P.A. 451 of 1994, as amended.

NOW, THEREFORE BE IT RESOLVED that the Board of Trustees
of the Charter Township of Texas (board/commission/council)
(Local unit of government) does hereby approve the 1998 Solid
Waste Management Plan Update for Kalamazoo County, Michigan, dated
September 1998, for the purpose of meeting the objectives of Section 11539a. of
P.A. 451 of 1994, as amended, and the rules promulgated thereunder.

RESOLUTION

1998 KALAMAZOO COUNTY SOLID WASTE MANAGEMENT PLAN UPDATE

WHEREAS, On May 1, 1979, the Kalamazoo County Board of Commissioners adopted a Notice of Intent which required filing a Solid Waste Management Plan in accordance with Section 24 of P.A. 641 of 1978, as amended (subsequently reenacted as P.A. 451 of 1994); and

WHEREAS, said Act requires that each Solid Waste Management Plan be updated every five (5) years; and

WHEREAS, the Board authorized the Metropolitan County Planning Commission as the "designated planning agency" responsible for the oversight of a Solid Waste Management Plan Update for the County of Kalamazoo; and

WHEREAS, the Board appointed a Solid Waste Management Planning Committee to prepare the actual document in accordance with Section 11534 of P.A. 451 of 1994, as amended; and

WHEREAS, a Solid Waste Management Plan Update has been prepared for Kalamazoo County and subsequently distributed to all local units of government in the County; and

WHEREAS, the Plan provides for the basic solid waste collection, disposal and management system needs of all communities within Kalamazoo County both in the short- (5 year) and long-range (10 year) time periods; and

WHEREAS, the Plan has been approved by the Kalamazoo County Solid Waste Management Planning Committee and the Kalamazoo County Board of Commissioners in accordance with Section 11536 of P.A. 451 of 1994, as amended.

NOW, THEREFORE BE IT RESOLVED that the Township Board
(board/commission/council)
of the Township of Wakarusa does hereby approve the 1998 Solid
(Local unit of government)

Waste Management Plan Update for Kalamazoo County, Michigan, dated September 1998, for the purpose of meeting the objectives of Section 11539a. of P.A. 451 of 1994, as amended, and the rules promulgated thereunder.