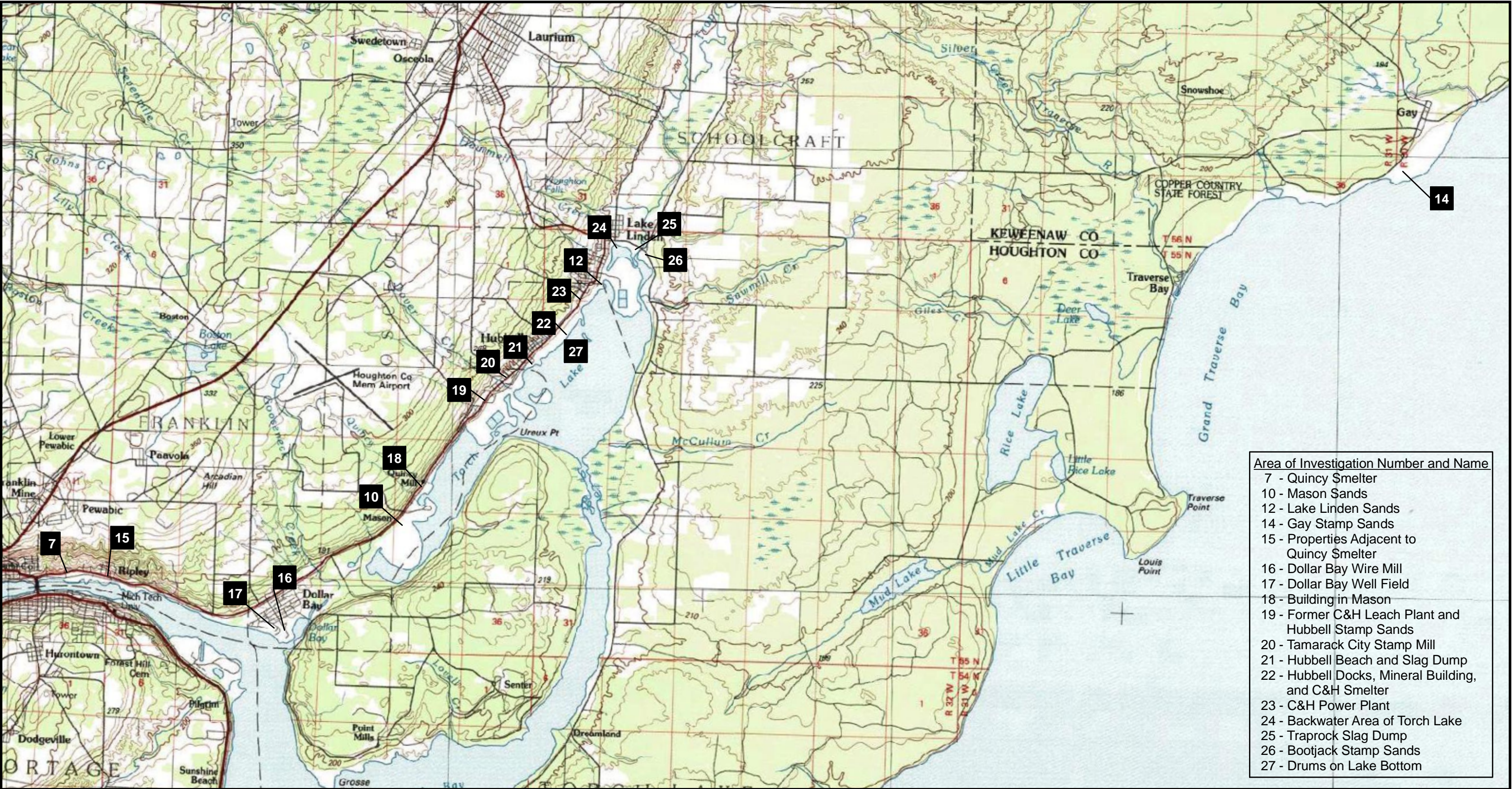
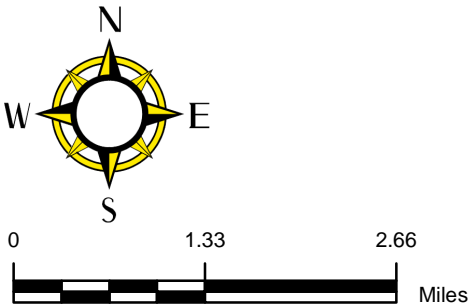
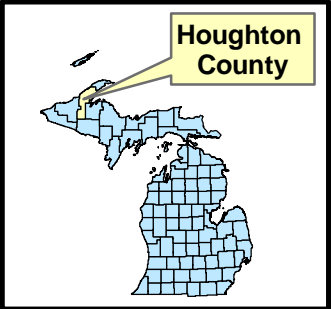


FIGURES



Source of Imagery: ESRI ArcGIS Map Service (c) 2007



File: \\FSOMI01\\GIS\\GIS_Projects\\Lake_Linden\\mxd\\Final_AA\\Fig1-Overview(11-13-07).mxd, 13-Nov-07 07:26, BROWNK

Figure 1



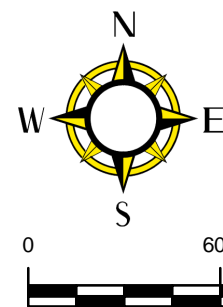
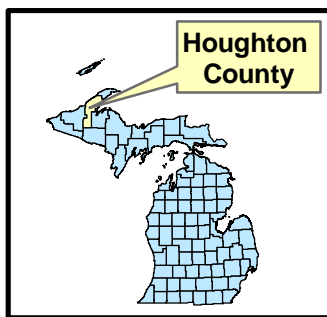
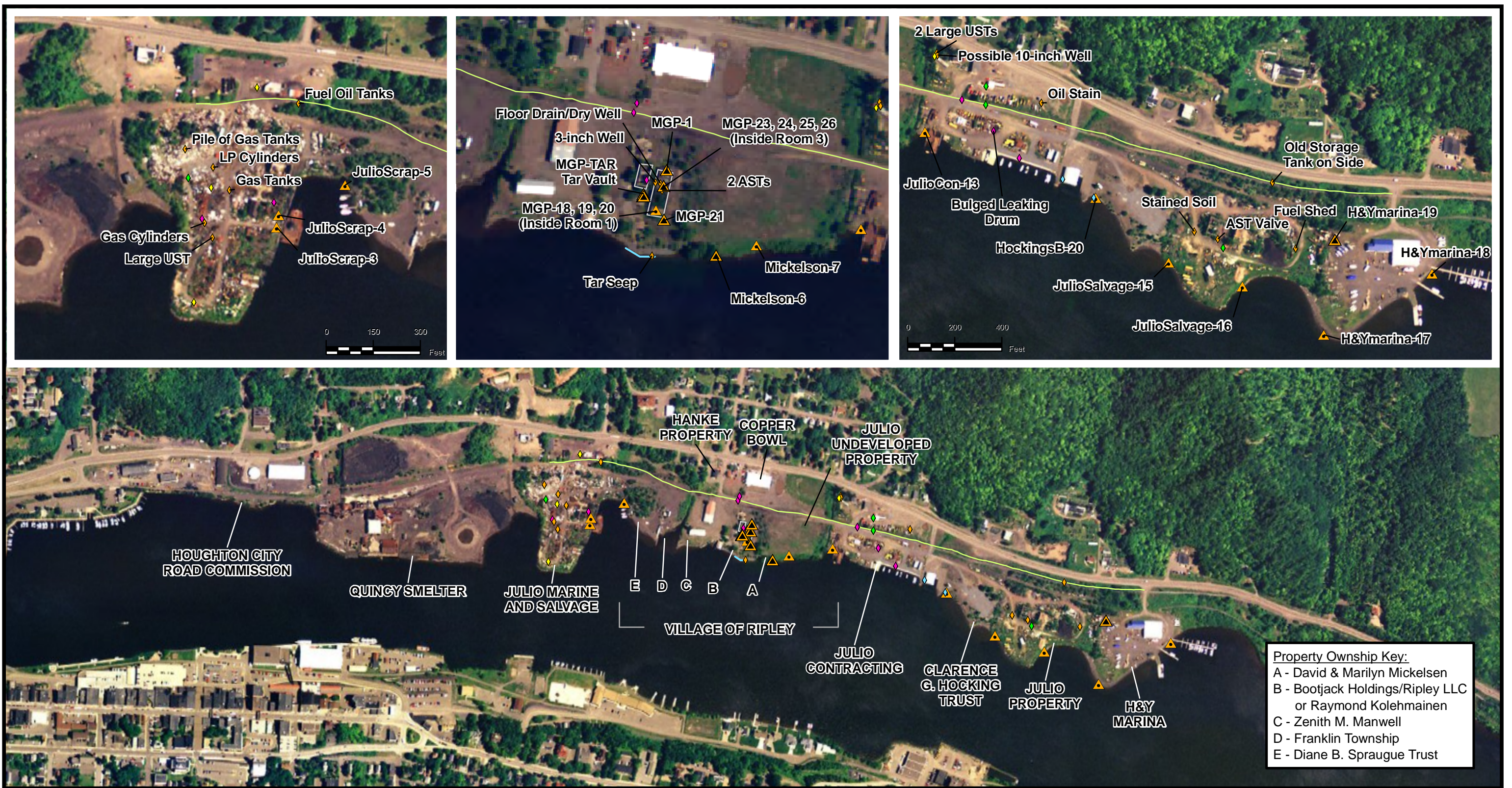
Prepared for:
U.S. EPA REGION V
Contract No: EP-S5-06-04

TDD No.: S05-0002-0708-020
DCN: 274-2A-ABDT



Prepared by:
WESTON SOLUTIONS, INC.
2501 Jolly Road, Suite 100
Okemos, Michigan

**SITE LOCATION/AREA OF INVESTIGATION
LAYOUT MAP**
TORCH LAKE AREA ASSESSMENT
KEWEENAW PENINSULA, MICHIGAN
October 2007



Legend

- START XRF and Laboratory Sample
- START XRF Sample
- ASTs
- Drums
- Batteries
- Water Edge
- GPS Feature - Other
- Building Outline
- Water Edge
- Hancock/Ripley Trail (HRT)

Note:
Property ownership is based on a cursory review of local tax records. Property boundaries were not located as part of the AA

Source of Imagery: ESRI ArcGIS Map Service (c) 2007
Date of Photography: 06/21/2005



Prepared for:
U.S. EPA REGION V
Contract No: EP-S5-06-04

TDD No.: S05-0002-0708-020
DCN: 274-2A-ABDT



Prepared by:
WESTON SOLUTIONS, INC.
2501 Jolly Road, Suite 100
Okemos, Michigan

AOI Nos. 7 and 15
SITE FEATURES AND XRF LOCATIONS
TORCH LAKE AREA ASSESSMENT
KEWEENAW PENINSULA, MICHIGAN
October 2007

Figure 2a