

The Michigan Department of Environment, Great Lakes, and Energy (EGLE) offers environmental assessments at no cost to qualified applicants through its Brownfield Site Assessment (BSA) Program.

These assessments can be used to evaluate the environmental condition of a property, and when contamination is identified, help to determine if additional work is necessary to make the property safe for reuse. Brownfield Assessments can be utilized to:

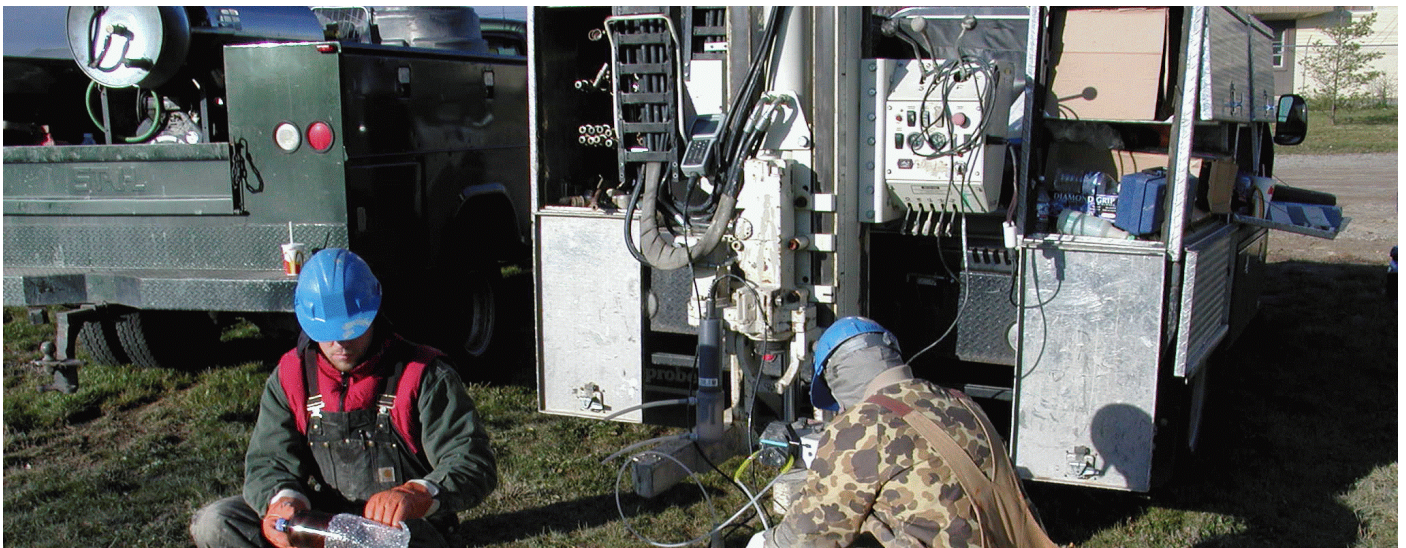
- Market a stagnant property
- Facilitate real-estate transactions
- Provide much needed data to support redevelopment projects

WHAT PROPERTIES QUALIFY?

Most properties with known or suspected contamination are eligible. Priority is given to properties with a proposed or active redevelopment project. Assessments can also be provided for properties being marketed for sale or lease. In all cases, the current property owner must sign an access agreement prior to EGLE performing the assessment.

WHAT CAN WE FUND?

EGLE's BSA program provides a range of environmental assessments to support both project needs and community development goals. This can include one or more of the following: Phase I and Phase II Environmental Site Assessments (ESAs), Asbestos and Hazardous Materials Surveys, Baseline Environmental Assessments, due care planning and cleanup options. BSAs are conducted directly by EGLE and our contractors on behalf of an eligible entity.

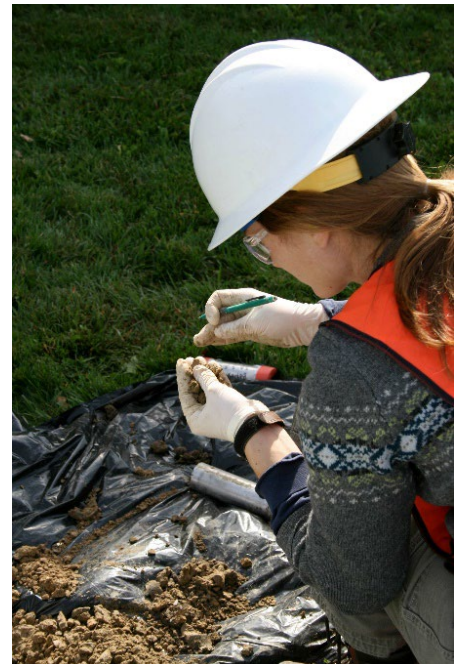


WHO CAN APPLY?

Any public entity, non-profit, property owner, developer, or Tribe can contact EGLE to apply. EGLE will seek support for the project from the local municipality before proceeding with the assessment.

HOW TO APPLY

An eligible applicant can nominate a property at any time – there is no application deadline. The application process is quick and EGLE staff usually determine the project's eligibility within a few weeks.



CONTACT US

To nominate a property, reach out to the EGLE [brownfield coordinator in your area](#).

Michigan.gov/EGLEBrownfields

#MiBrownfields

EGLE does not discriminate on the basis of race, sex, religion, age, national origin, color, marital status, disability, political beliefs, height, weight, genetic information, or sexual orientation in the administration of any of its programs or activities, and prohibits intimidation and retaliation, as required by applicable laws and regulations.

To request this material in an alternate format, contact EGLE-Accessibility@Michigan.gov or call 800-662-9278.