



**EGLE Part 213 WEEKLY REPORT – March 25, 2022\***

**Incident Name: Flat Rock ER 08-31-2021**

**Ford Flat Rock Assembly Facility**

**Gasoline Release**

**1 International Drive, Flat Rock, Michigan**

To: Paul Owens (EGLE)

REF. No.: REL-0186-21

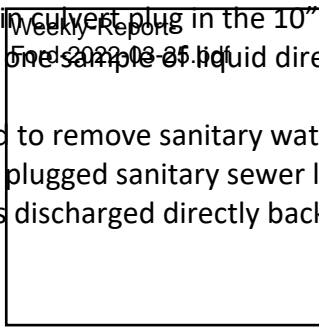
CC: Ford Motor Company (Ford)

DATE: March 25, 2022

**ACTIVITIES AT THE FORD FLAT ROCK ASSEMBLY PROPERTY**

**Week Ending March 25, 2022**

- Ford contractors continued to maintain culvert plug in the 10” sanitary line
  - Ford contractors collected one sample of liquid directly from the sanitary sewer, upstream of the culvert plug.
  - Ford contractors continued to remove sanitary water from the plugged sanitary line. Analytical results from the plugged sanitary sewer line were below the local discharge limit and the sanitary water was discharged directly back into the sanitary sewer downstream of the culvert plug.



**Plans for Week Ending April 1, 2022**

- Ford contractors will continue to maintain culvert plug in the 10” sanitary line
  - Ford contractors will collect one sample of liquid directly from the sanitary sewer, upstream of the culvert plug.
  - Ford contractors will continue to remove sanitary water from the plugged sanitary line. Provided analytical results from the plugged sanitary sewer line are below the local discharge limit, the sanitary water will be discharged directly back into the sanitary sewer downstream of the culvert plug.
- Ford contractors will check MW-14R, MW-23R and MW-24R for the presence of free product. If detected, it will be recovered.
- Ford contractors will continue work on the sanitary sewer reroute (currently 95% complete).
  - Ford contractors will continue excavating soil, installing the new sanitary sewer line and manhole locations, backfilling the completed areas to grade, and restoring concrete.
  - Final connection of new sewer pipe planned for following week ending April 8.

\* Per e-mail from EGLE dated October 14, 2021, the last Daily Report was submitted on October 15, 2021. Weekly Reports will be submitted on Fridays until EGLE deems them no longer necessary.