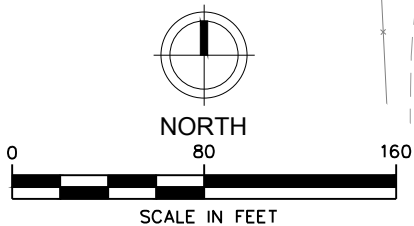


**LEGEND**

- PURGE WELL/SUMP
- PURGE WELL/SUMP OPERATING
- PEAT MONITORING WELL
- NESTED MONITORING WELL
- APERTURE
- MONITORING WELL
- APERTURE/MONITORING
- OBSERVATION WELL
- CORE SAMPLE
- SURFACE WATER
- STAFF GAUGE
- POTENTIOMETRIC SURFACE CONTOUR
- 902.74 - POTENTIOMETRIC ELEVATION
- (902.74) - DATA NOT CONTOURED

NOTE: MAP COMBINES WELLS COMPLETED AT MULTIPLE DEPTHS. INTERPRETATION OF THIS MAP REQUIRES FAMILIARITY WITH THE GEOLOGY AND OF THE GROUNDWATER FLOW REGIME.

POTENTIOMETRIC SURFACE ELEVATIONS ARE MEASURED IN FEET NAVD88.



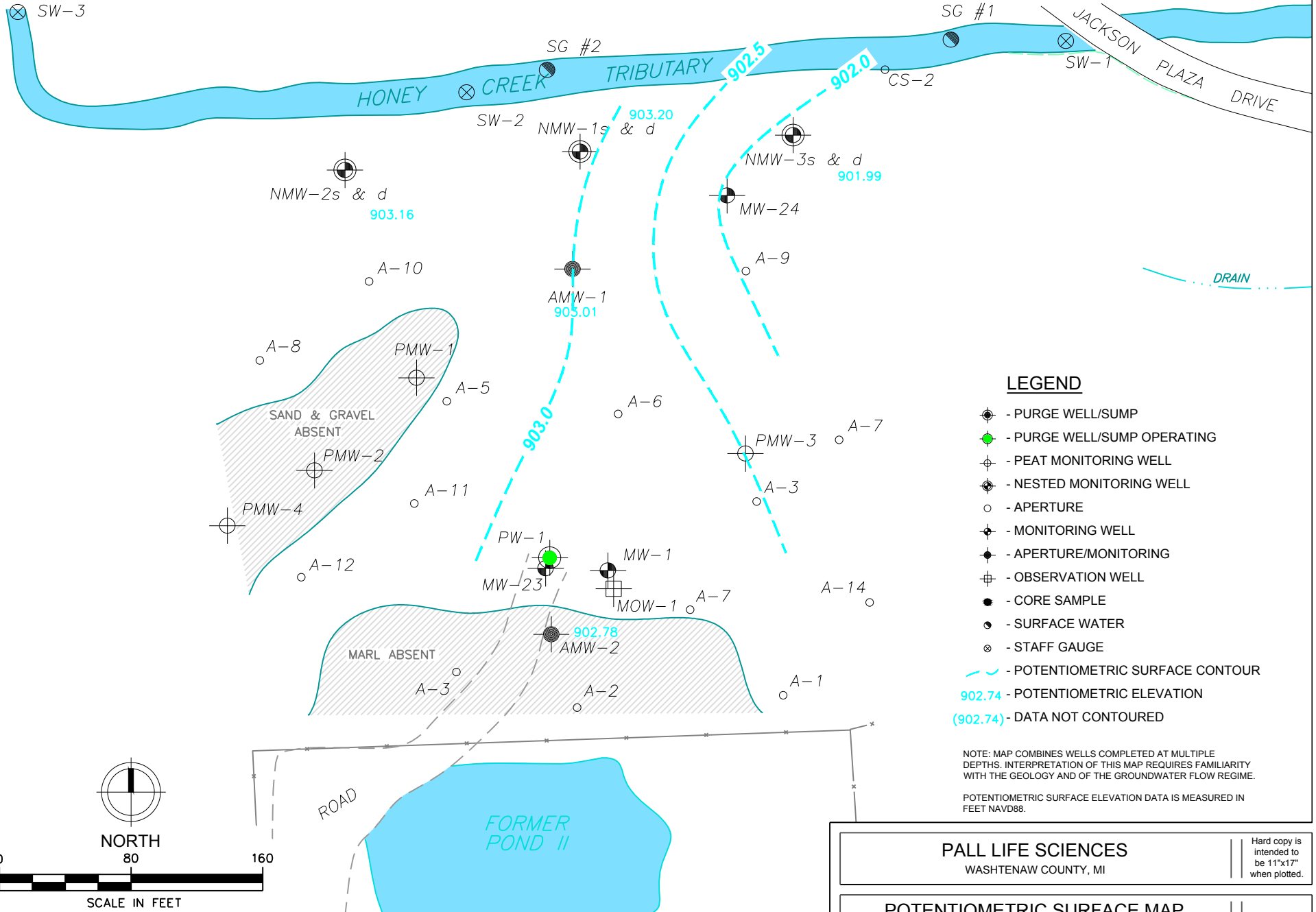
**PALL LIFE SCIENCES**  
 WASHTENAW COUNTY, MI

Hard copy is intended to be 11"x17" when plotted.

**POTENTIOMETRIC SURFACE MAP**  
 MARSHY AREA - PEAT  
 MARCH 15, 2013

© Copyright 2012 All Rights Reserved.

806500



**LEGEND**

- PURGE WELL/SUMP
- PURGE WELL/SUMP OPERATING
- PEAT MONITORING WELL
- NESTED MONITORING WELL
- APERTURE
- MONITORING WELL
- APERTURE/MONITORING
- OBSERVATION WELL
- CORE SAMPLE
- SURFACE WATER
- STAFF GAUGE
- POTENTIOMETRIC SURFACE CONTOUR
- 902.74 - POTENTIOMETRIC ELEVATION
- (902.74) - DATA NOT CONTOURED

NOTE: MAP COMBINES WELLS COMPLETED AT MULTIPLE DEPTHS. INTERPRETATION OF THIS MAP REQUIRES FAMILIARITY WITH THE GEOLOGY AND OF THE GROUNDWATER FLOW REGIME.

POTENTIOMETRIC SURFACE ELEVATION DATA IS MEASURED IN FEET NAVD88.

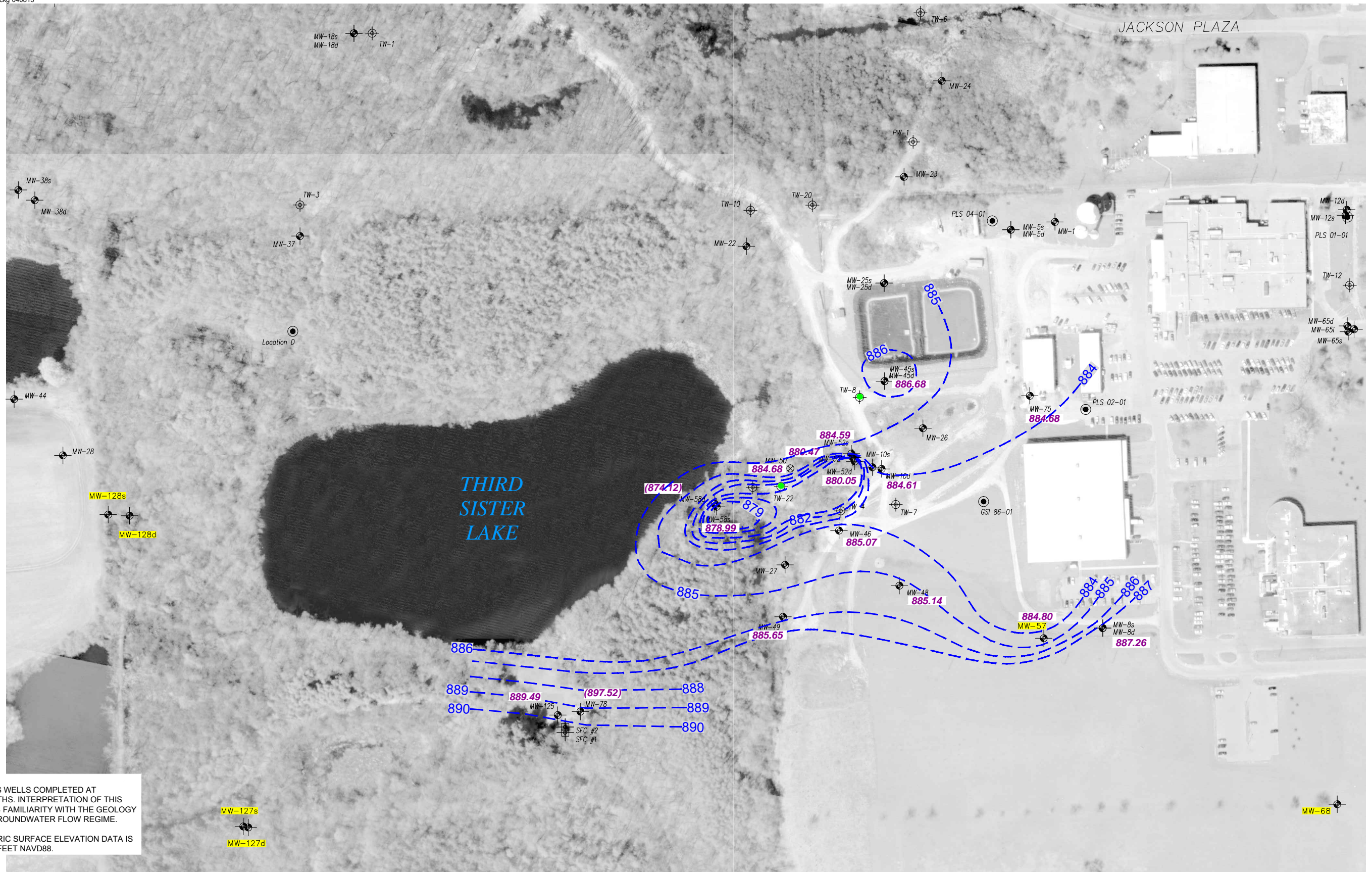
**PALL LIFE SCIENCES**  
WASHTENAW COUNTY, MI

Hard copy is intended to be 11"x17" when plotted.

**POTENTIOMETRIC SURFACE MAP**  
MARSHY AREA - SAND & GRAVEL  
MARCH 15, 2013

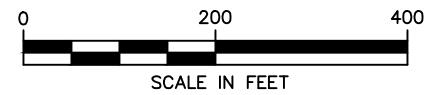
© Copyright 2012 All Rights Reserved.

806500



NOTES:  
 MAP COMBINES WELLS COMPLETED AT MULTIPLE DEPTHS. INTERPRETATION OF THIS MAP REQUIRES FAMILIARITY WITH THE GEOLOGY AND OF THE GROUNDWATER FLOW REGIME.  
 POTENTIOMETRIC SURFACE ELEVATION DATA IS MEASURED IN FEET NAVD88.

AERIAL PHOTO TAKEN: APRIL 2002



**LEGEND**

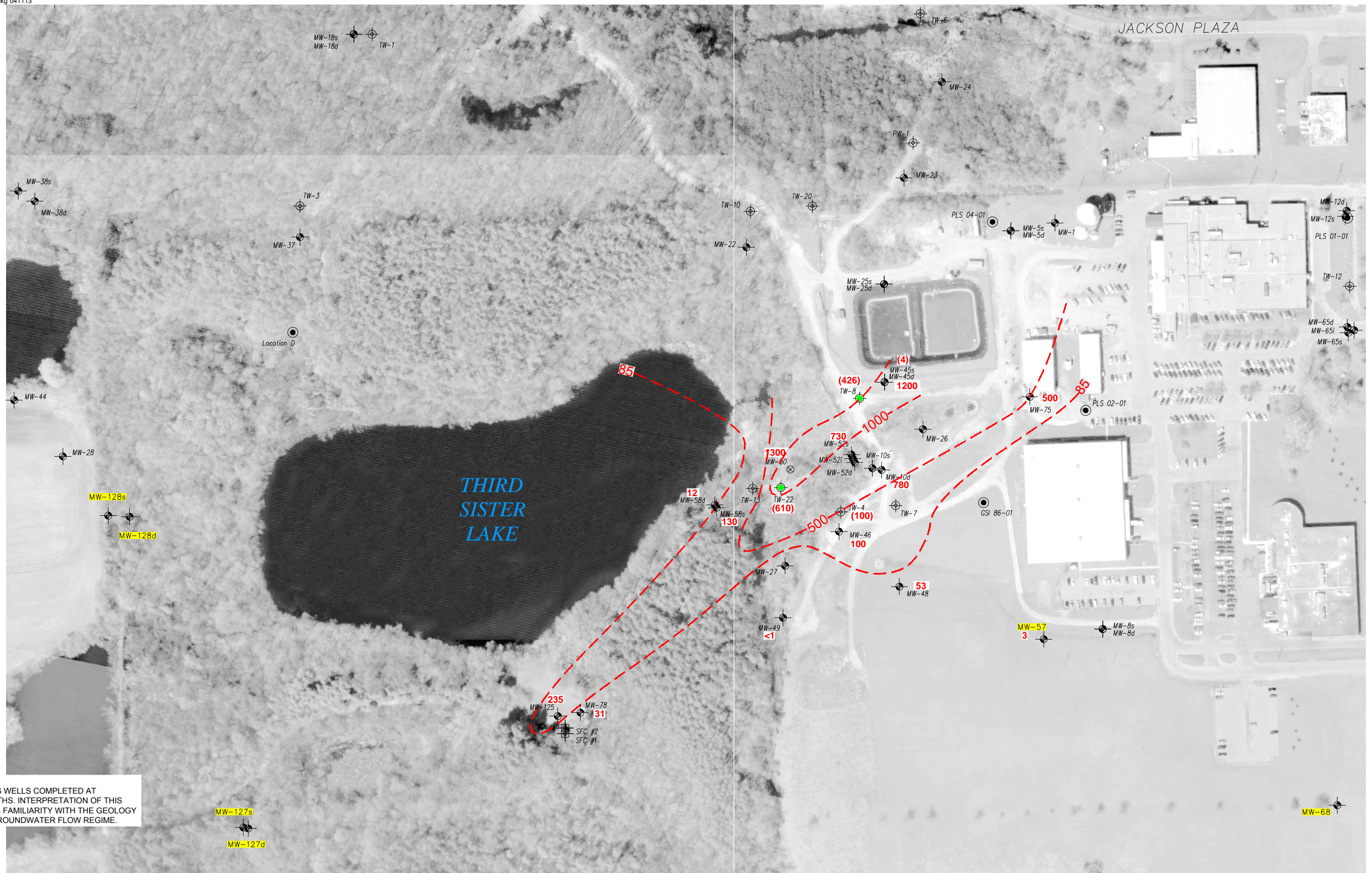
- MONITOR WELL
- DOMESTIC WELL
- EXTRACTION WELL
- SW UNIT EXTRACTION WELL OPERATING
- TEMPORARY EXTRACTION WELL
- POTENTIOMETRIC SURFACE CONTOUR
- 886.79** - UNIT C<sub>3</sub> POTENTIOMETRIC SURFACE ELEVATION
- (886.79)** - DATA NOT USED
- MW-xx** - COMPLIANCE MONITOR WELL

PALL LIFE SCIENCES  
 WASHTENAW COUNTY, MI

POTENTIOMETRIC SURFACE MAP  
 SOUTHWEST PROPERTY  
 MARCH 15, 2013

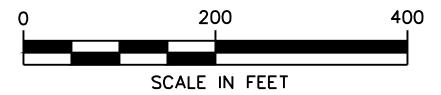
Hard copy is intended to be 11"x17" when plotted.

© Copyright 2012 All Rights Reserved.



NOTES:  
 MAP COMBINES WELLS COMPLETED AT  
 MULTIPLE DEPTHS. INTERPRETATION OF THIS  
 MAP REQUIRES FAMILIARITY WITH THE GEOLOGY  
 AND OF THE GROUNDWATER FLOW REGIME.

AERIAL PHOTO TAKEN: APRIL 2002



**LEGEND**

- MONITOR WELL
- DOMESTIC WELL
- EXTRACTION WELL
- UNIT SW EXTRACTION WELL OPERATING
- TEMPORARY EXTRACTION WELL
- 1,4 DIOXANE ISOCONCENTRATION CONTOUR (µg/L)
- 147** - 1,4 DIOXANE ISOCONCENTRATION (µg/L)
- (501)** - DATA NOT CONTOURED
- MW-xx** - COMPLIANCE MONITOR WELL

**PALL LIFE SCIENCES**  
 WASHTENAW COUNTY, MI

**ISOCONCENTRATION MAP**  
 SOUTHWEST PROPERTY  
 SEPTEMBER 2012 - APRIL 2013

Hard copy is  
 intended to  
 be 11"x17"  
 when plotted.

© Copyright  
 2012 All Rights  
 Reserved.