

NOTES:
 MAP COMBINES WELLS COMPLETED AT
 MULTIPLE DEPTHS. INTERPRETATION OF THIS
 MAP REQUIRES FAMILIARITY WITH THE GEOLOGY
 AND THE GROUNDWATER FLOW REGIME.

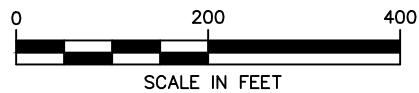
DATA COLLECTED 04/2015 - 10/2015

MW-127s
 MW-127d

AERIAL PHOTO TAKEN: APRIL 2002



NORTH



SCALE IN FEET

LEGEND

- MONITOR WELL
- FORMER RESIDENTIAL WELLS ROUTINELY MONITORED
- EXTRACTION WELL
- UNIT SW EXTRACTION WELL OPERATING
- TEMPORARY EXTRACTION WELL
- 1,4 DIOXANE ISOCONCENTRATION CONTOUR (µg/L)
- 147** - 1,4 DIOXANE ISOCONCENTRATION (µg/L)
- (501)** - DATA NOT CONTOURED
- MW-xx** - COMPLIANCE MONITOR WELL

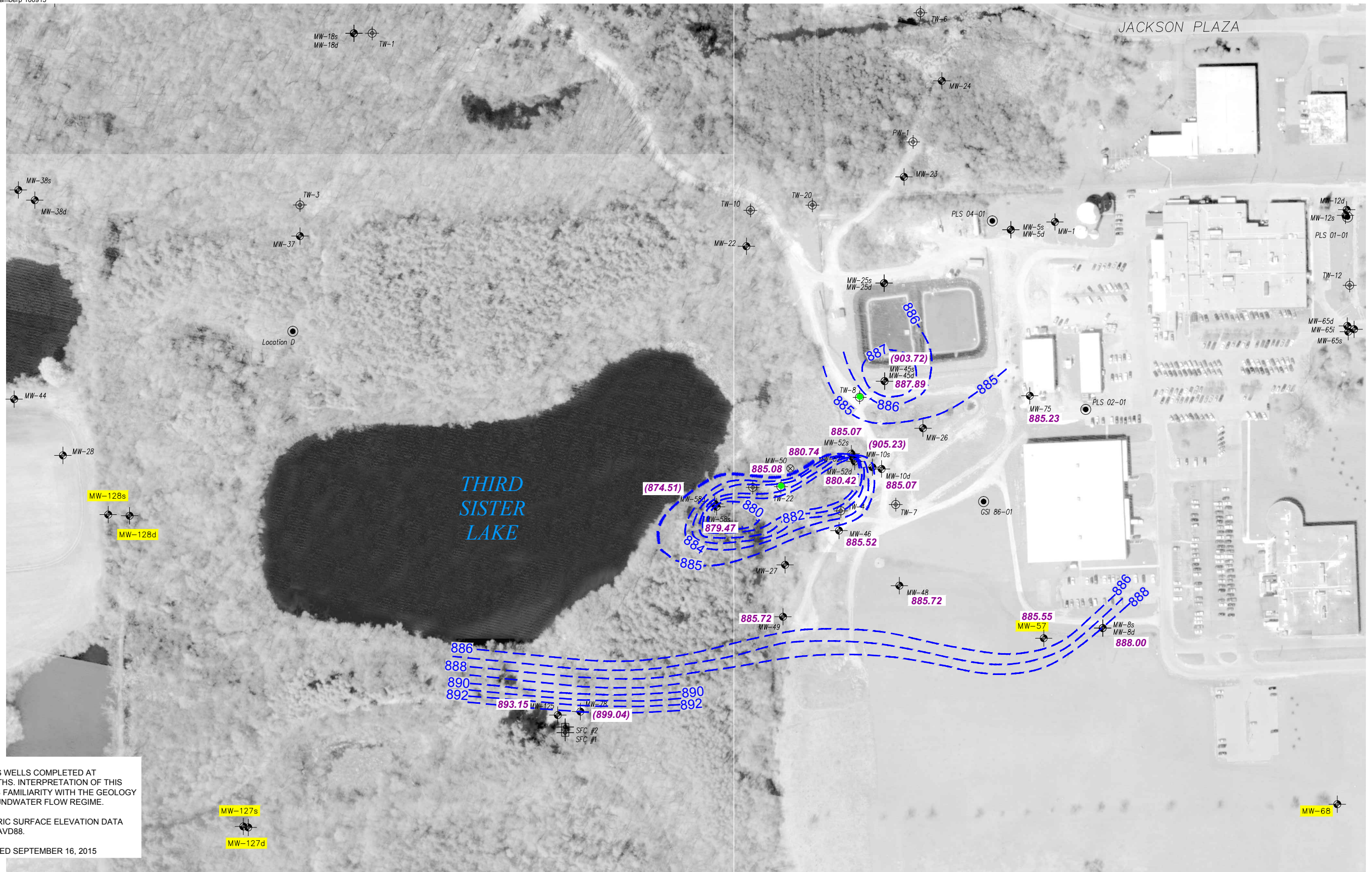
GELMAN SCIENCES
 WASHTENAW COUNTY, MI

Hard copy is
 intended to
 be 11"x17"
 when plotted.

ISOCONCENTRATION MAP
 SOUTHWEST PROPERTY
 APRIL 2015 - OCTOBER 2015

© Copyright
 2015 All Rights
 Reserved.

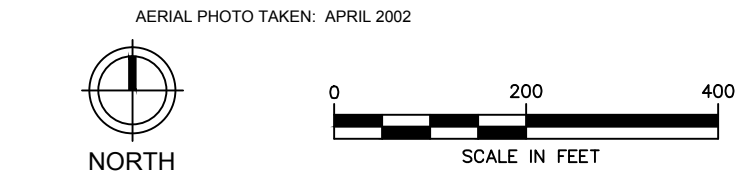
806500



NOTES:
 MAP COMBINES WELLS COMPLETED AT MULTIPLE DEPTHS. INTERPRETATION OF THIS MAP REQUIRES FAMILIARITY WITH THE GEOLOGY AND THE GROUNDWATER FLOW REGIME.

POTENTIOMETRIC SURFACE ELEVATION DATA ARE IN FEET NAVD88.

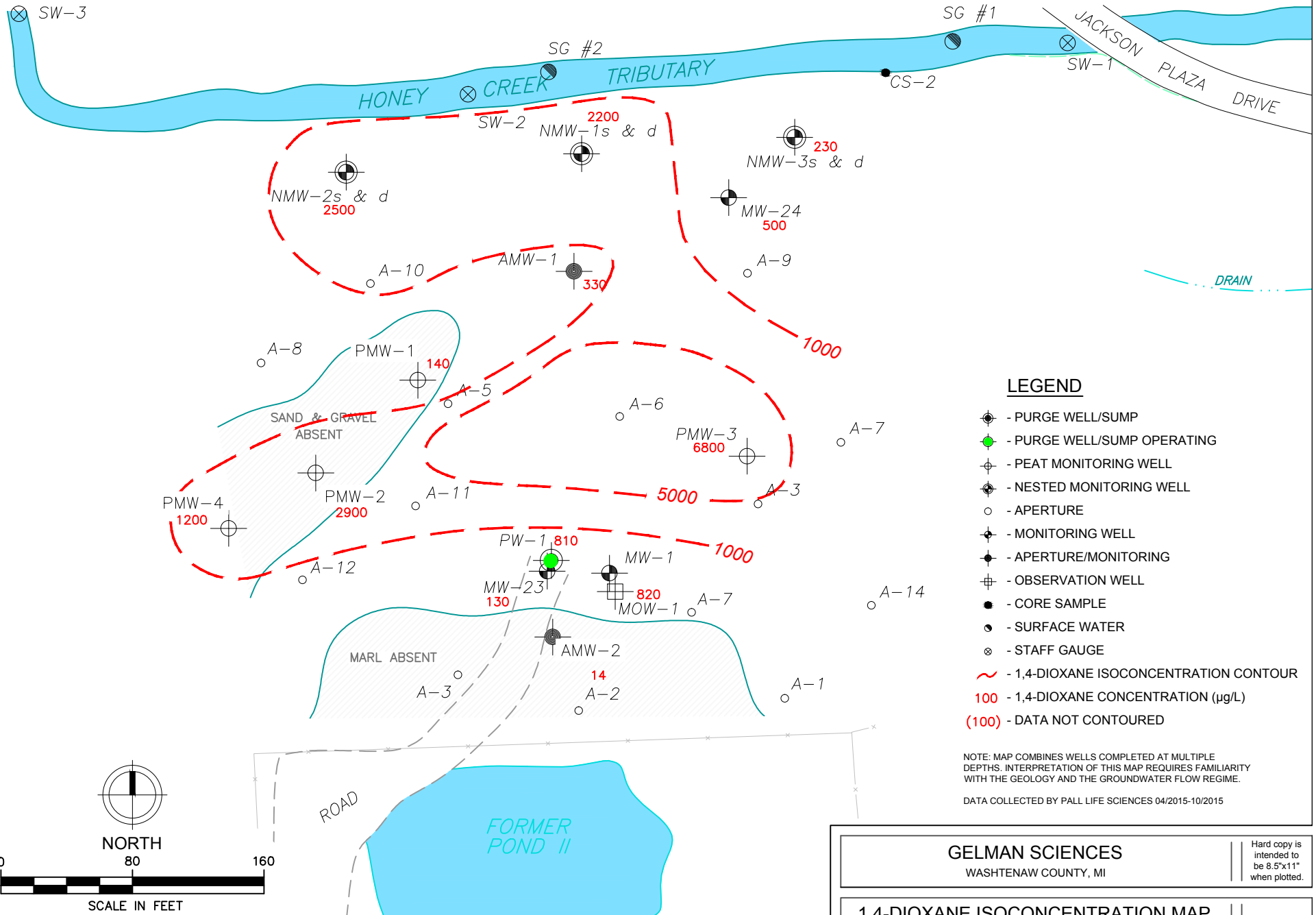
DATA COLLECTED SEPTEMBER 16, 2015



- LEGEND**
- ⊙ - MONITOR WELL
 - ⊕ - FORMER RESIDENTIAL WELL ROUTINELY MONITORED
 - ⊖ - EXTRACTION WELL
 - - SW UNIT EXTRACTION WELL OPERATING
 - ⊗ - TEMPORARY EXTRACTION WELL

- - - POTENTIOMETRIC SURFACE CONTOUR
- 886.79 - UNIT C₃ POTENTIOMETRIC SURFACE ELEVATION
- (886.79) - DATA NOT USED
- MW-xx - COMPLIANCE MONITOR WELL

GELMAN SCIENCES WASHTENAW COUNTY, MI	Hard copy is intended to be 11"x17" when plotted.
POTENTIOMETRIC SURFACE MAP SOUTHWEST PROPERTY SEPTEMBER 16, 2015	© Copyright 2015 All Rights Reserved.

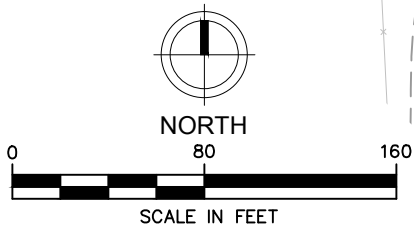


LEGEND

- ⊕ - PURGE WELL/SUMP
- ⊕ (green) - PURGE WELL/SUMP OPERATING
- ⊕ (cross) - PEAT MONITORING WELL
- ⊕ (circle) - NESTED MONITORING WELL
- - APERTURE
- ⊕ (circle) - MONITORING WELL
- ⊕ (circle) - APERTURE/MONITORING
- ⊕ (circle) - OBSERVATION WELL
- - CORE SAMPLE
- (circle) - SURFACE WATER
- ⊗ - STAFF GAUGE
- ~ - 1,4-DIOXANE ISOCONCENTRATION CONTOUR
- 100 - 1,4-DIOXANE CONCENTRATION (µg/L)
- (100) - DATA NOT CONTOURED

NOTE: MAP COMBINES WELLS COMPLETED AT MULTIPLE DEPTHS. INTERPRETATION OF THIS MAP REQUIRES FAMILIARITY WITH THE GEOLOGY AND THE GROUNDWATER FLOW REGIME.

DATA COLLECTED BY PALL LIFE SCIENCES 04/2015-10/2015



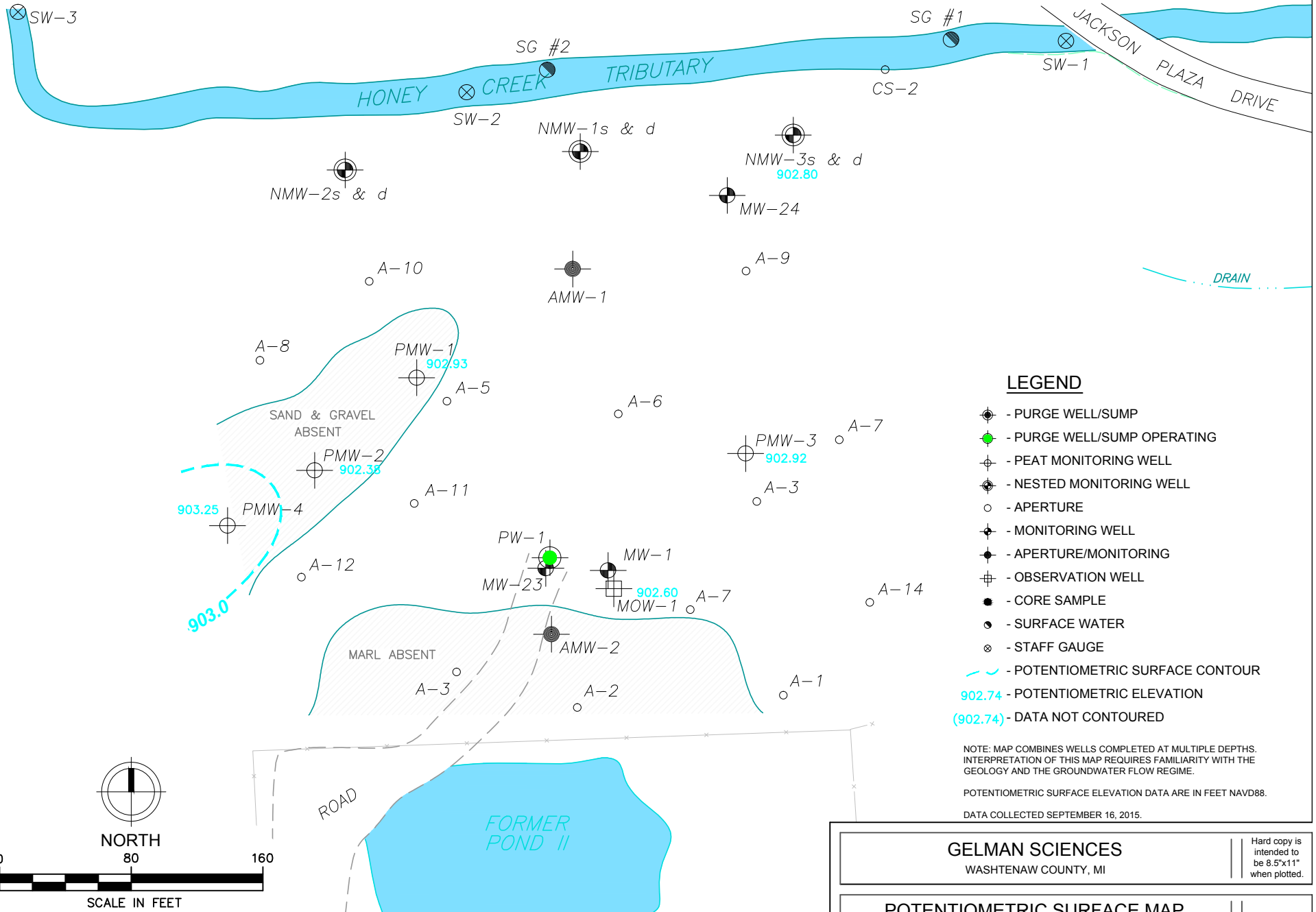
GELMAN SCIENCES
WASHTENAW COUNTY, MI

Hard copy is intended to be 8.5"x11" when plotted.

1,4-DIOXANE ISOCONCENTRATION MAP
MARSHY AREA - PEAT
APRIL 2015 - OCTOBER 2015

© Copyright 2015 All Rights Reserved.

806500



LEGEND

- PURGE WELL/SUMP
- PURGE WELL/SUMP OPERATING
- PEAT MONITORING WELL
- NESTED MONITORING WELL
- APERTURE
- MONITORING WELL
- APERTURE/MONITORING
- OBSERVATION WELL
- CORE SAMPLE
- SURFACE WATER
- STAFF GAUGE
- POTENTIOMETRIC SURFACE CONTOUR
- 902.74 - POTENTIOMETRIC ELEVATION
- (902.74) - DATA NOT CONTOURED

NOTE: MAP COMBINES WELLS COMPLETED AT MULTIPLE DEPTHS. INTERPRETATION OF THIS MAP REQUIRES FAMILIARITY WITH THE GEOLOGY AND THE GROUNDWATER FLOW REGIME.

POTENTIOMETRIC SURFACE ELEVATION DATA ARE IN FEET NAVD88.

DATA COLLECTED SEPTEMBER 16, 2015.

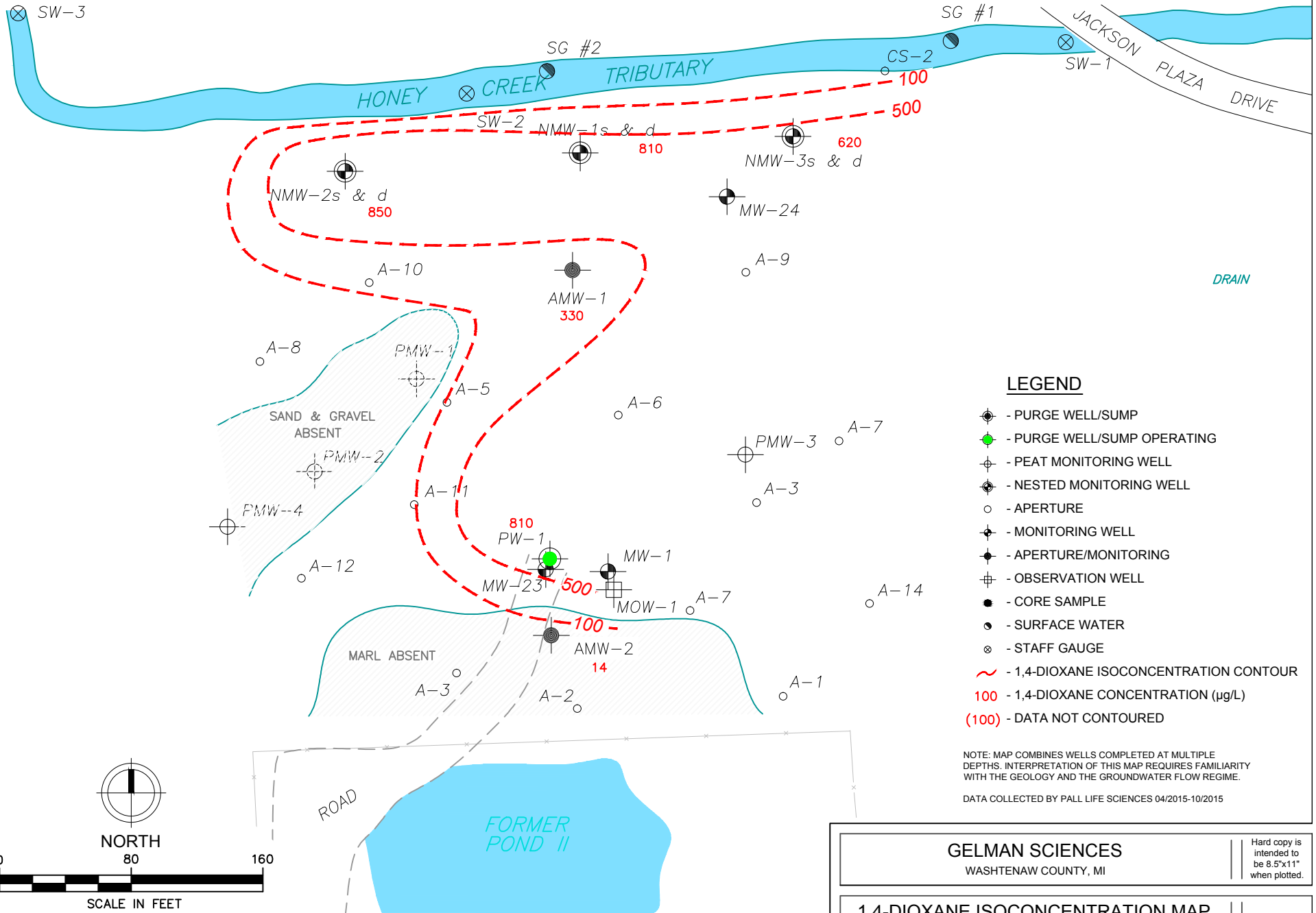
GELMAN SCIENCES
WASHTENAW COUNTY, MI

Hard copy is intended to be 8.5"x11" when plotted.

POTENTIOMETRIC SURFACE MAP
MARSHY AREA - PEAT
SEPTEMBER 16, 2015

© Copyright 2015 All Rights Reserved.

806500



LEGEND

- PURGE WELL/SUMP
- PURGE WELL/SUMP OPERATING
- PEAT MONITORING WELL
- NESTED MONITORING WELL
- APERTURE
- MONITORING WELL
- APERTURE/MONITORING
- OBSERVATION WELL
- CORE SAMPLE
- SURFACE WATER
- STAFF GAUGE
- 1,4-DIOXANE ISOCONCENTRATION CONTOUR
- 100** - 1,4-DIOXANE CONCENTRATION (µg/L)
- (100)** - DATA NOT CONTOURED

NOTE: MAP COMBINES WELLS COMPLETED AT MULTIPLE DEPTHS. INTERPRETATION OF THIS MAP REQUIRES FAMILIARITY WITH THE GEOLOGY AND THE GROUNDWATER FLOW REGIME.

DATA COLLECTED BY PALL LIFE SCIENCES 04/2015-10/2015

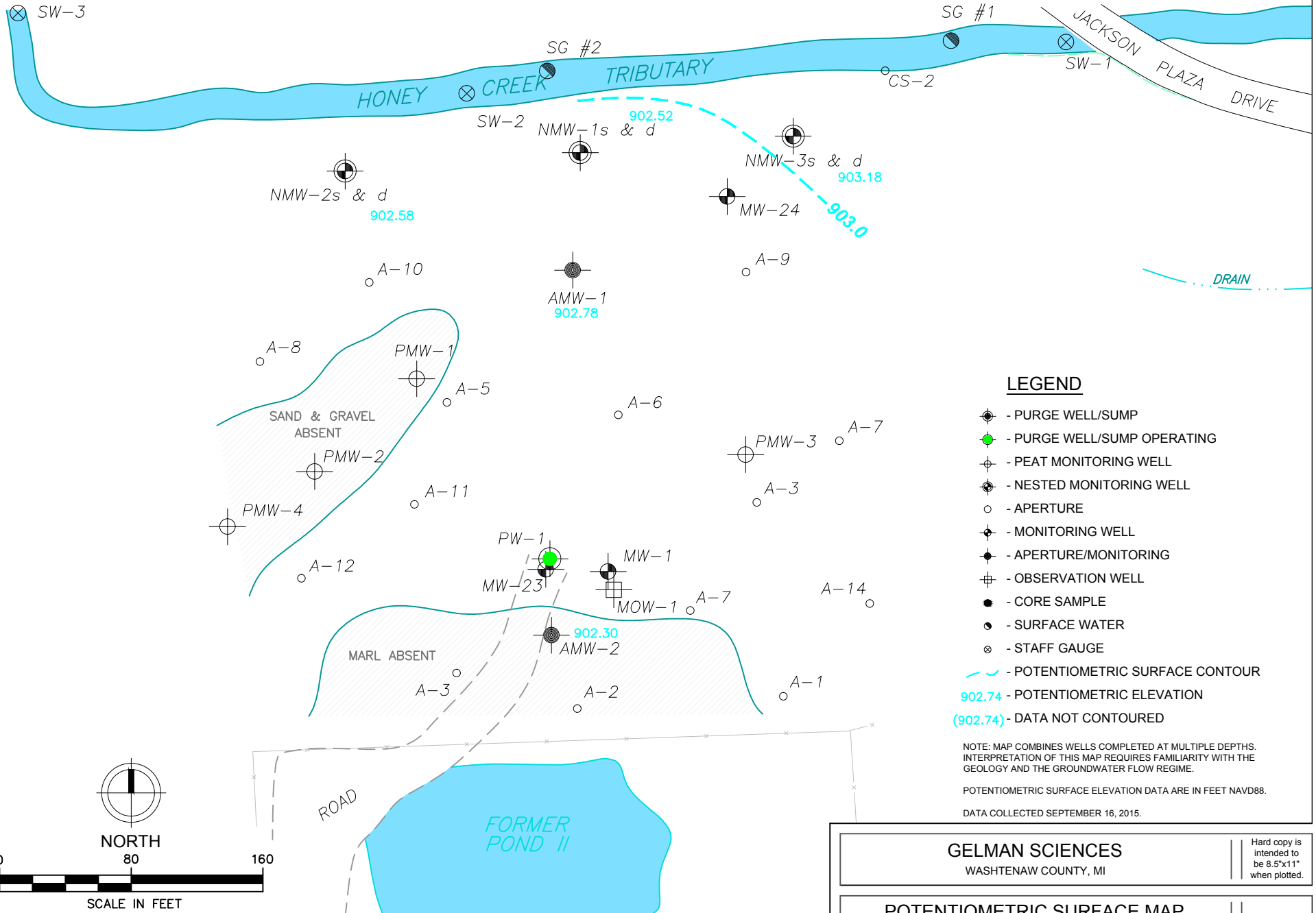
GELMAN SCIENCES
WASHTENAW COUNTY, MI

Hard copy is intended to be 8.5"x11" when plotted.

1,4-DIOXANE ISOCONCENTRATION MAP
MARSHY AREA - SAND & GRAVEL
APRIL 2015 - OCTOBER 2015

© Copyright 2015 All Rights Reserved.

806500



LEGEND

- PURGE WELL/SUMP
- PURGE WELL/SUMP OPERATING
- PEAT MONITORING WELL
- NESTED MONITORING WELL
- APERTURE
- MONITORING WELL
- APERTURE/MONITORING
- OBSERVATION WELL
- CORE SAMPLE
- SURFACE WATER
- STAFF GAUGE
- POTENTIOMETRIC SURFACE CONTOUR
- 902.74 - POTENTIOMETRIC ELEVATION
- (902.74) - DATA NOT CONTOURED

NOTE: MAP COMBINES WELLS COMPLETED AT MULTIPLE DEPTHS. INTERPRETATION OF THIS MAP REQUIRES FAMILIARITY WITH THE GEOLOGY AND THE GROUNDWATER FLOW REGIME.

POTENTIOMETRIC SURFACE ELEVATION DATA ARE IN FEET NAVD88.

DATA COLLECTED SEPTEMBER 16, 2015.

GELMAN SCIENCES
WASHTENAW COUNTY, MI

Hard copy is intended to be 8.5"x11" when plotted.

POTENTIOMETRIC SURFACE MAP
MARSHY AREA - SAND & GRAVEL
SEPTEMBER 16, 2015

© Copyright 2015 All Rights Reserved.

806500