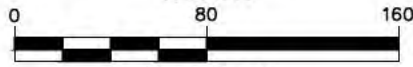


LEGEND

- ⊕ - PURGE WELL/SUMP
 - - PURGE WELL/SUMP OPERATING
 - ⊕ - PEAT MONITORING WELL
 - ⊕ - NESTED MONITORING WELL
 - - APERTURE
 - ⊕ - MONITORING WELL
 - ⊕ - APERTURE/MONITORING
 - ⊕ - OBSERVATION WELL
 - - CORE SAMPLE
 - - SURFACE WATER
 - ⊗ - STAFF GAUGE
 - - - - POTENTIOMETRIC SURFACE CONTOUR
 - 902.74 - POTENTIOMETRIC ELEVATION
 - (902.74) - DATA NOT CONTOURED
- NOTE: MAP COMBINES WELLS COMPLETED AT MULTIPLE DEPTHS. INTERPRETATION OF THIS MAP REQUIRES FAMILIARITY WITH THE GEOLOGY AND THE GROUNDWATER FLOW REGIME.
- POTENTIOMETRIC SURFACE ELEVATION DATA ARE IN FEET NAVD88.
- DATA COLLECTED SEPTEMBER 16, 2015.



NORTH



SCALE IN FEET

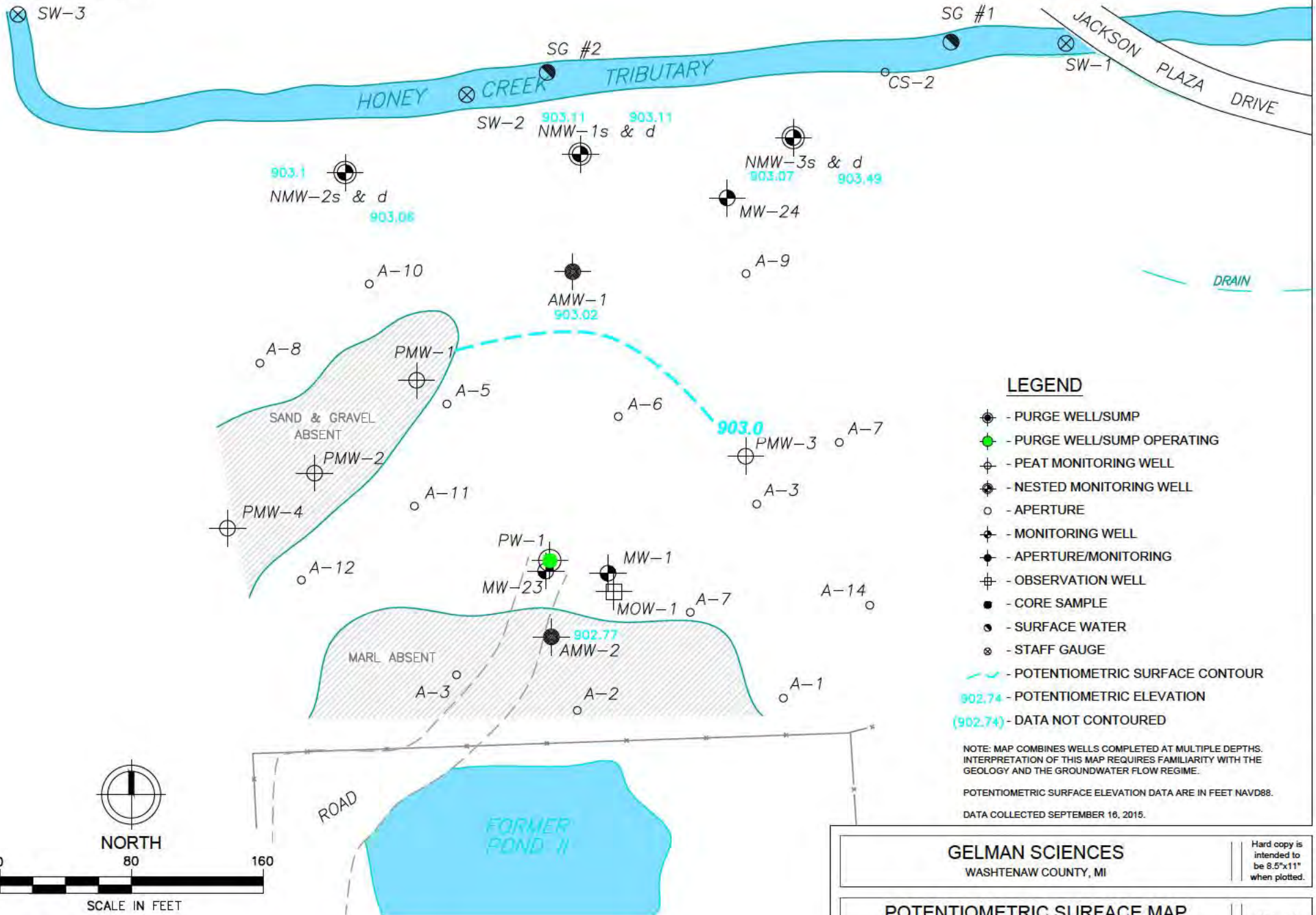
GELMAN SCIENCES
 WASHTENAW COUNTY, MI

Hard copy is intended to be 8.5"x11" when plotted.

POTENTIOMETRIC SURFACE MAP
 MARSHY AREA - PEAT
 MARCH 22, 2016

© Copyright 2015 All Rights Reserved.

806500



LEGEND

- PURGE WELL/SUMP
- PURGE WELL/SUMP OPERATING
- PEAT MONITORING WELL
- NESTED MONITORING WELL
- APERTURE
- MONITORING WELL
- APERTURE/MONITORING
- OBSERVATION WELL
- CORE SAMPLE
- SURFACE WATER
- STAFF GAUGE
- POTENTIOMETRIC SURFACE CONTOUR
- POTENTIOMETRIC ELEVATION
- DATA NOT CONTOURED

NOTE: MAP COMBINES WELLS COMPLETED AT MULTIPLE DEPTHS. INTERPRETATION OF THIS MAP REQUIRES FAMILIARITY WITH THE GEOLOGY AND THE GROUNDWATER FLOW REGIME.

POTENTIOMETRIC SURFACE ELEVATION DATA ARE IN FEET NAVD88.

DATA COLLECTED SEPTEMBER 16, 2015.

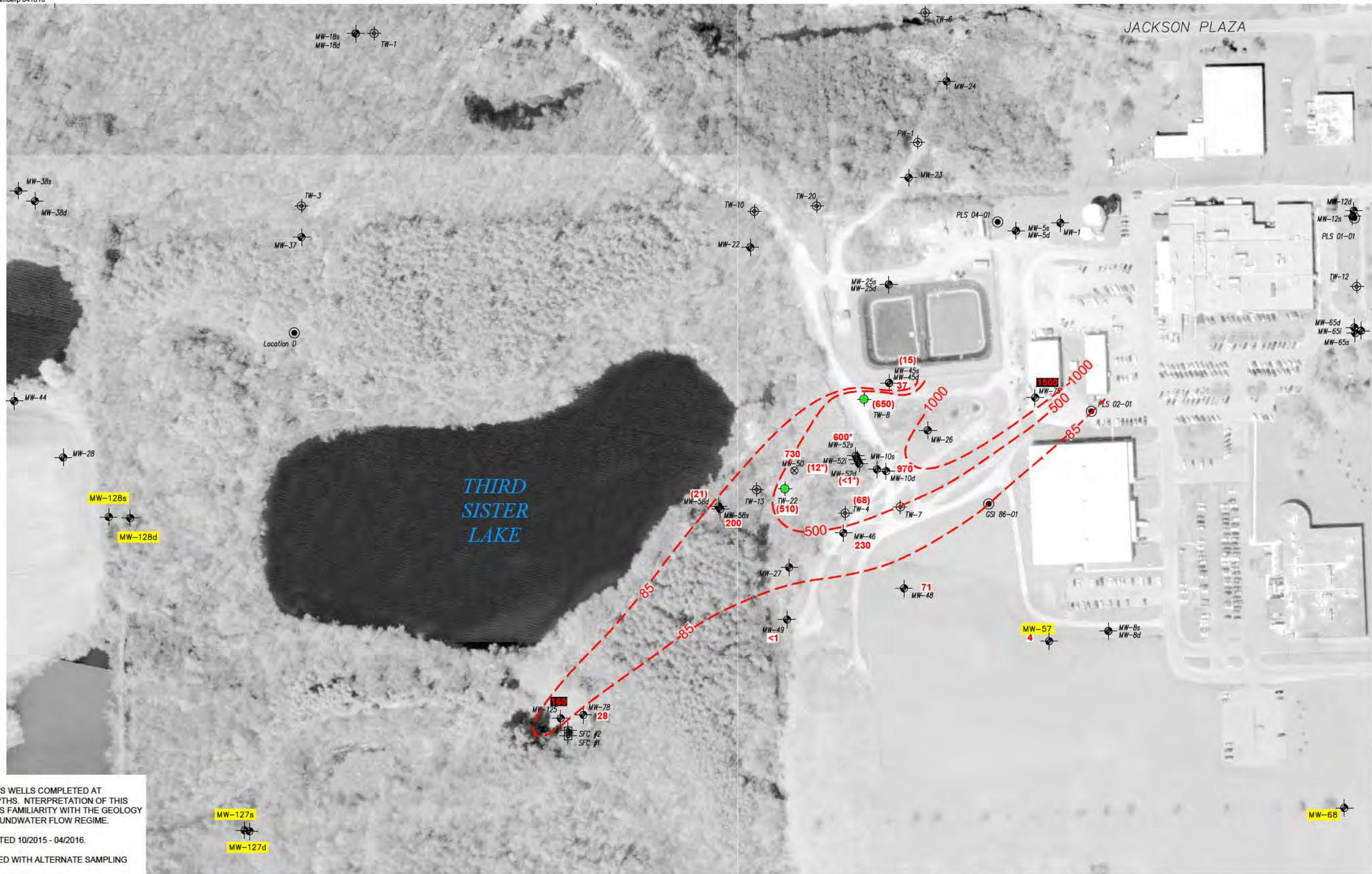
GELMAN SCIENCES
WASHTENAW COUNTY, MI

Hard copy is intended to be 8.5"x11" when plotted.

POTENTIOMETRIC SURFACE MAP
MARSHY AREA - SAND & GRAVEL
MARCH 22, 2016

© Copyright 2015 All Rights Reserved.

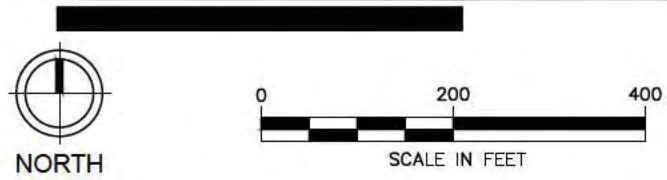
806500



NOTES:
 MAP COMBINES WELLS COMPLETED AT MULTIPLE DEPTHS. INTERPRETATION OF THIS MAP REQUIRES FAMILIARITY WITH THE GEOLOGY AND THE GROUNDWATER FLOW REGIME.

DATA COLLECTED 10/2015 - 04/2016.

*WELL SAMPLED WITH ALTERNATE SAMPLING TECHNIQUE.



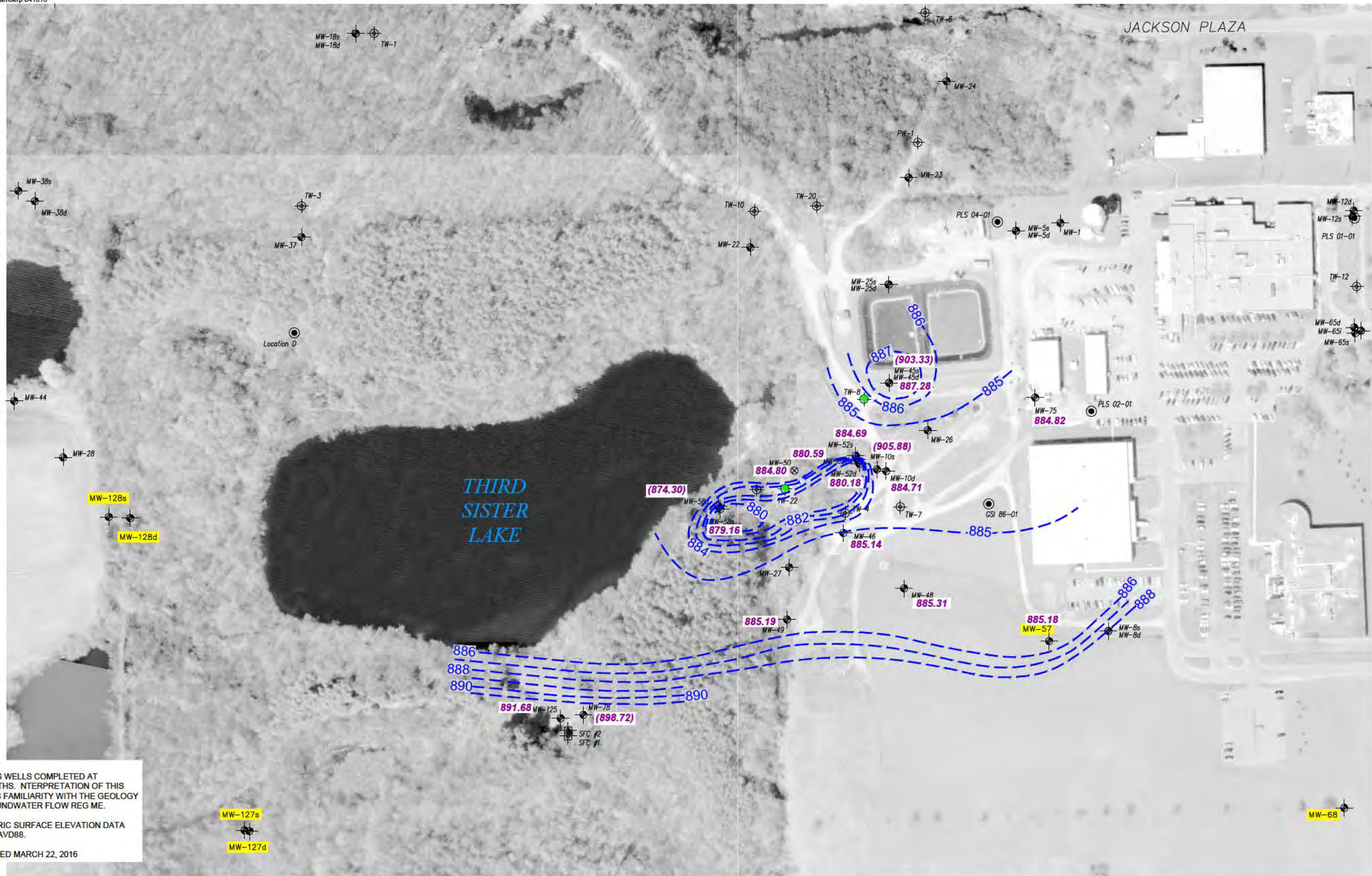
LEGEND

- MONITOR WELL
- FORMER RESIDENTIAL WELLS ROUTINELY MONITORED
- EXTRACTION WELL
- UNIT SW EXTRACTION WELL OPERATING
- TEMPORARY EXTRACTION WELL
- 1,4 DIOXANE ISOCONCENTRATION CONTOUR (µg/L)
- 147** - 1,4 DIOXANE ISOCONCENTRATION (µg/L)
- (501)** - DATA NOT CONTOURED
- MW-xx** - COMPLIANCE MONITOR WELL

GELMAN SCIENCES
 WASHTENAW COUNTY, MI

ISOCONCENTRATION MAP
 SOUTHWEST PROPERTY
 OCTOBER 2015 - APRIL 2016

Hard copy is intended to be 11"x17" when plotted.
 © Copyright 2016 All Rights Reserved.

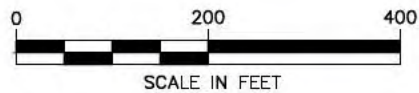


NOTES:
 MAP COMBINES WELLS COMPLETED AT MULTIPLE DEPTHS. INTERPRETATION OF THIS MAP REQUIRES FAMILIARITY WITH THE GEOLOGY AND THE GROUNDWATER FLOW REGIME.
 POTENTIOMETRIC SURFACE ELEVATION DATA ARE IN FEET NAVD88.
 DATA COLLECTED MARCH 22, 2016

MW-127s
 MW-127d



NORTH



SCALE IN FEET

LEGEND

- - MONITOR WELL
- ⊠ - FORMER RESIDENTIAL WELL ROUTINELY MONITORED
- ⊕ - EXTRACTION WELL
- - SW UNIT EXTRACTION WELL OPERATING
- ⊗ - TEMPORARY EXTRACTION WELL
- - - POTENTIOMETRIC SURFACE CONTOUR
- 886.79 - UNIT C₃ POTENTIOMETRIC SURFACE ELEVATION
- (886.79) - DATA NOT USED
- MW-xx - COMPLIANCE MONITOR WELL

GELMAN SCIENCES
 WASHTENAW COUNTY, MI

POTENTIOMETRIC SURFACE MAP
 SOUTHWEST PROPERTY
 MARCH 22, 2016

Hard copy is intended to be 11"x17" when plotted.

© Copyright 2016 All Rights Reserved.

806500