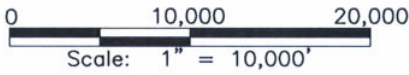
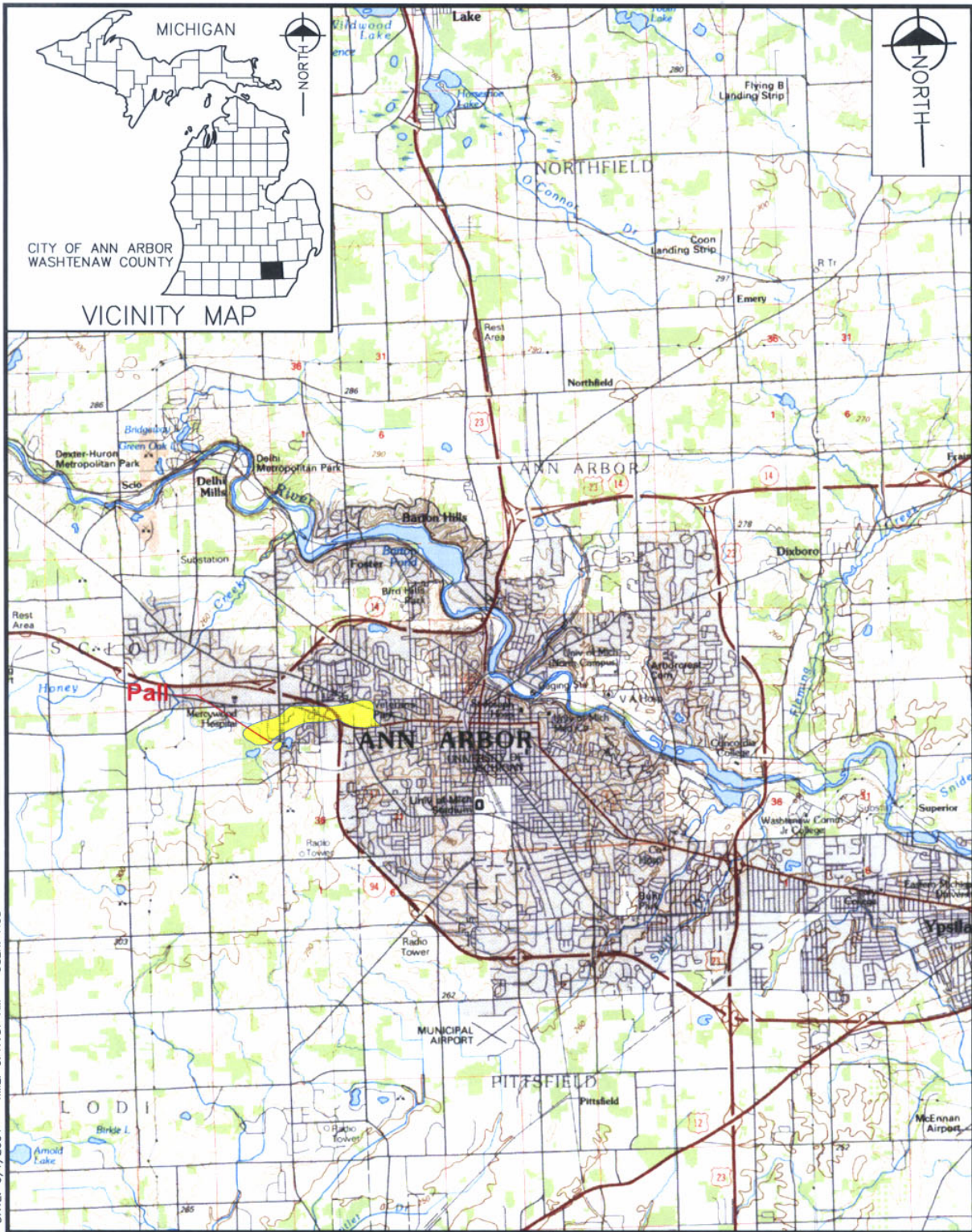



N:\96502\WASHTENAW\TOP0100K.DWG

PLOT INFO: N:\96502\WASHTENAW\TOP0100K.DWG DATE: 6/1/2004 TIME: 9:47:57 AM USER: ACS



LEGEND

 - UNIT E AREA WITH 1,4-DIOXANE CONCENTRATIONS EXCEEDING 85 µg/L (ppb) JANUARY-MARCH 2004

SITE LOCATION MAP



Fishbeck, Thompson, Carr & Huber
 Engineers • Scientists • Architects
 Kalamazoo, Michigan (269) 375-3824



Pall Life Sciences
 Scio Twp., Washtenaw County, Michigan
 Final Feasibility Study

PROJECT NO.
F96502

FIGURE NO.

1

© Copyright 2004. All Rights Reserved