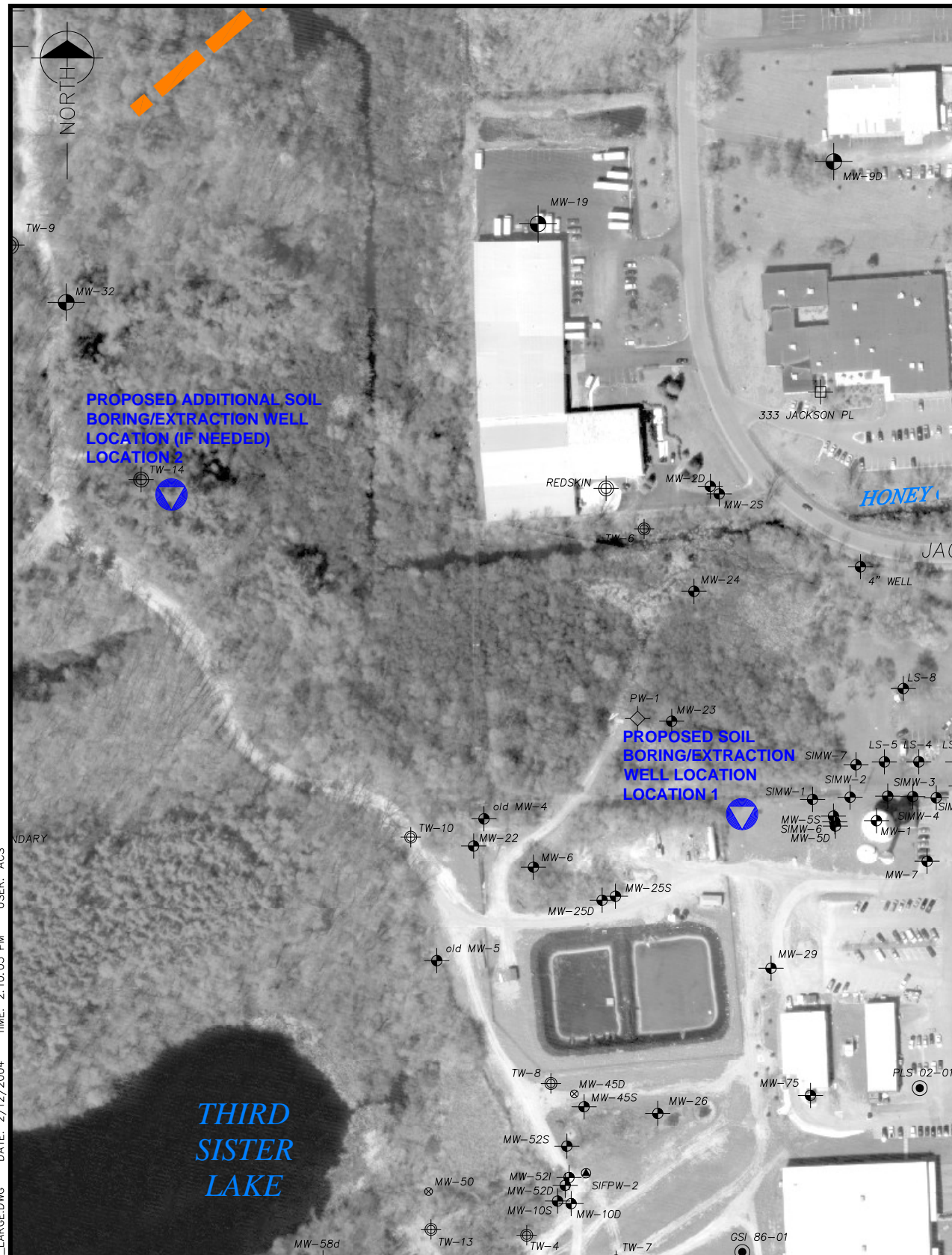


N: \\96502\RA
 N: \\96502\RA
 N: \\96502\RA
 N: \\96502\RA
 M: \\CUSTOM\ACAD\2002\SYMBOLS\B18X24.DWG
 N: \\96502\RASTER\040402\SC_SW.TIF
 E: \\ACES\DOCP4FT.TIF
 M: \\CUSTOM\ACAD\2002\SYMBOLS\B11X17.DWG
 D: \\WORK\96502\DOQ\SCIO_EB.TIF
 D: \\WORK\96502\DOQ\SCIO_SB.TIF
 PLOT INFO: N: \\96502\DWG\STATEBASE_LARGE.DWG DATE: 2/12/2004 TIME: 2:10:05 PM USER: ACS

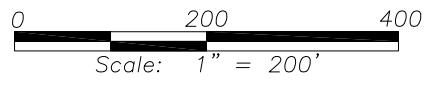


PROPOSED ADDITIONAL SOIL BORING/EXTRACTION WELL LOCATION (IF NEEDED) LOCATION 2

PROPOSED SOIL BORING/EXTRACTION WELL LOCATION 1

LEGEND

- ⊕ -PURGE WELL
- ⊗ -TEMPORARY PURGE WELL
- ⊙ -MONITORING WELL
- ⊕ -SPRAY IRRIGATION FIELD PURGE WELL
- ⊙ -HYDROGEOLOGIC TEST HOLE



PROPOSED SOIL BORING/EXTRACTION WELL LOCATIONS

AERIAL PHOTO TAKEN: SPRING 1999



Fishbeck, Thompson, Carr & Huber
 Engineers • Scientists • Architects
 Kalamazoo, Michigan (269) 375-3824



© Copyright 2004 All Rights Reserved

PALL LIFE SCIENCES
 SCIO TWP., WASHTENAW COUNTY, MI
UNIT E WORK PLAN
FEBRUARY 2004

PROJECT NO.
F96502
 FIGURE NO.
1