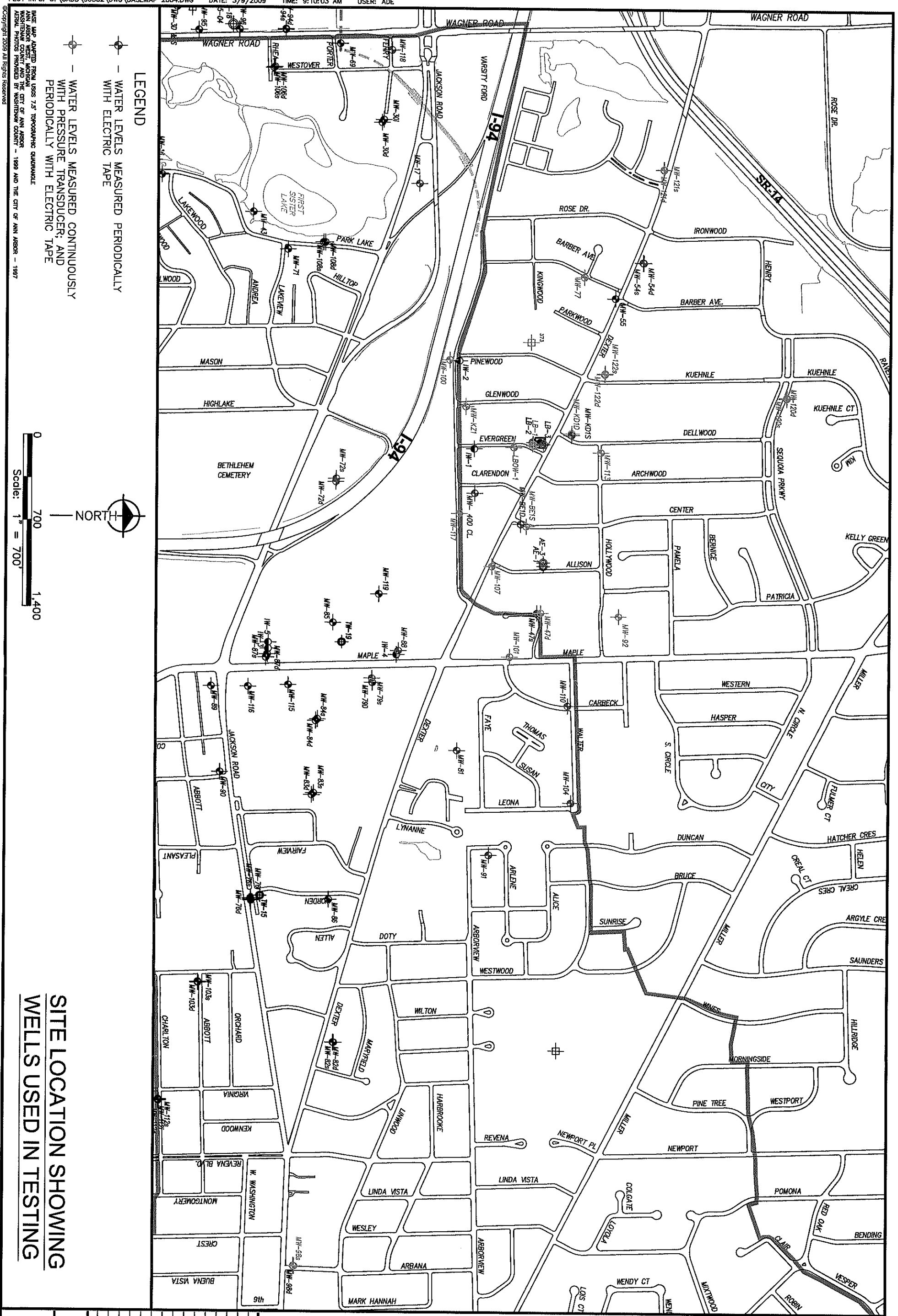


# Figures



**SITE LOCATION SHOWING  
WELLS USED IN TESTING**

PROJECT NO.	F96502
FIGURE	1

**Pall Life Sciences**  
Scio Twp., Washtenaw County, Michigan  
**Evergreen Area**  
**Water Level Testing Report**

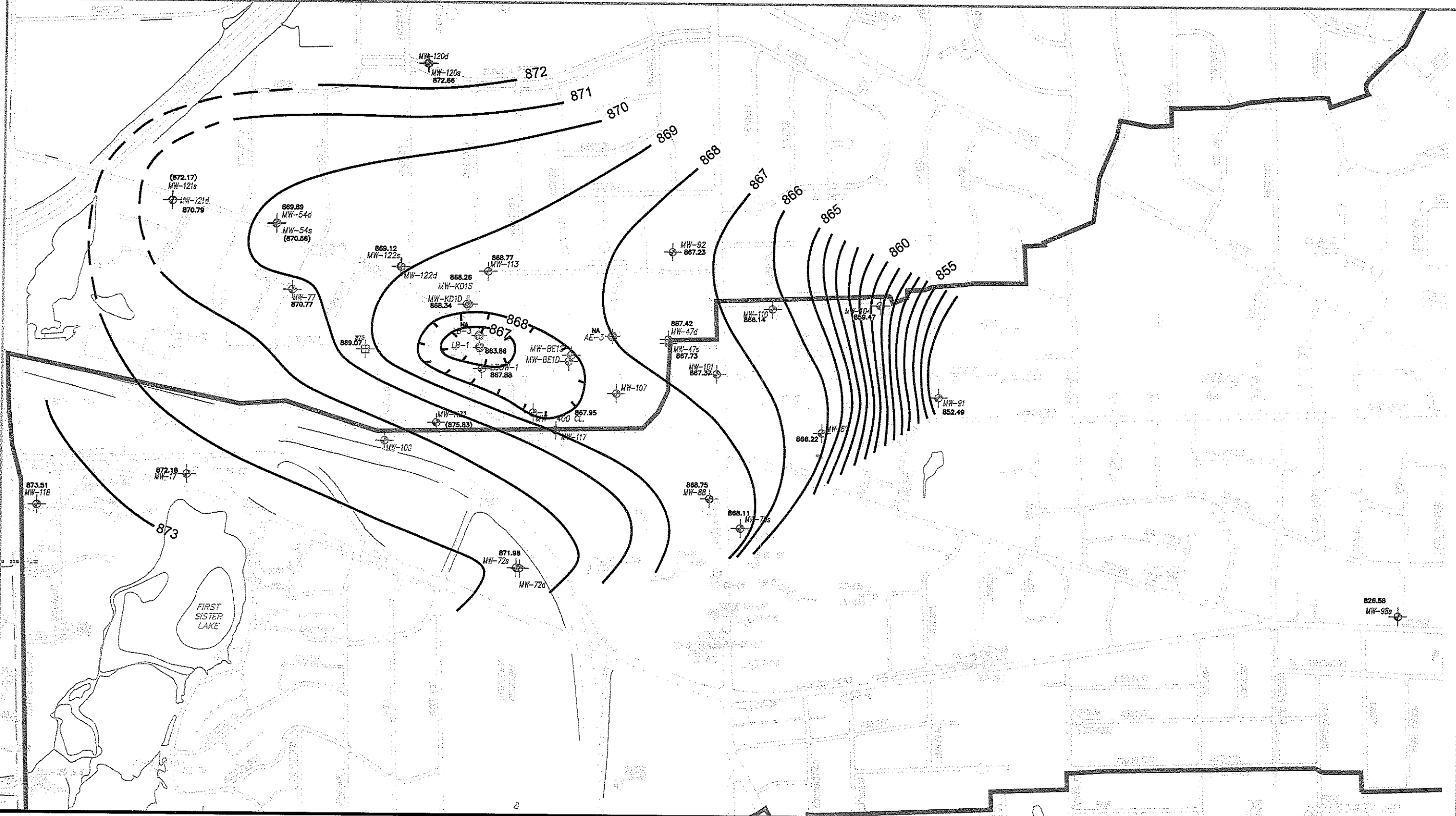
**fitch**  
engineers  
scientists  
architects  
constructors

Hand copy is intended to be printed on 11x17 sheet (90% reduction) and graphic quality may not be accurate for any other size.

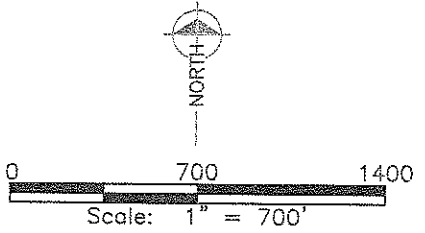
fishback, thompson, carr & huber, inc.

M:\CUSTOM\ACAD2008\SYMBOLS\B-18X24.DWG R:\96502\1W-18 PUMP TEST\PUMPING SURF.DWG U:\CADD\96502\DWG\AERIAL2003.DWG U:\CADD\96502\MASTER\2009 POTENTIOMETRIC\FR\96502\9651  
M:\CUSTOM\ACAD2008\SYMBOLS\B-24X36.DWG R:\96502\1W-18 PUMP TEST\PUMPING W...TW-18BUREAU\96502\MASTER\022508PSC-E1 DUPONT.DWG U:\CADD\96502\MASTER\2009 POTENTIOMETRIC\FR\96502\9651

PLOT INFO: U:\CADD\96502\DWG\CONTOUR MAPS NEW BASE 2002.DWG DATE: 3/16/2009 TIME: 4:41:56 PM USER: ADE



- LEGEND**
- ⊕ - MONITOR WELL USED FOR STUDY
  - ⊕ - MONITOR WELL
  - ⊕ - RESIDENTIAL WELL
  - ⊕ - PURGE WELL
  - ⊕ - HYDROGEOLOGIC TEST BORING
  - ⊕ - UV/OX. TREATMENT SYSTEM
  - ⊕ - TEMPORARY PURGE WELL
  - ▲ - SURFACE WATER ELEVATION POINT
  - - POTENTIOMETRIC CONTOUR (ug/L)
  - (875.83) - DATA NOT CONTOURED



PUMPING CONDITIONS	
LB-1:	100 GALLONS PER MINUTE
LB-3:	85 GALLONS PER MINUTE
AE-3:	15 GALLONS PER MINUTE

**SHALLOW POTENTIOMETRIC  
SURFACE PRE-TESTING PERIOD  
JANUARY 21, 2009**

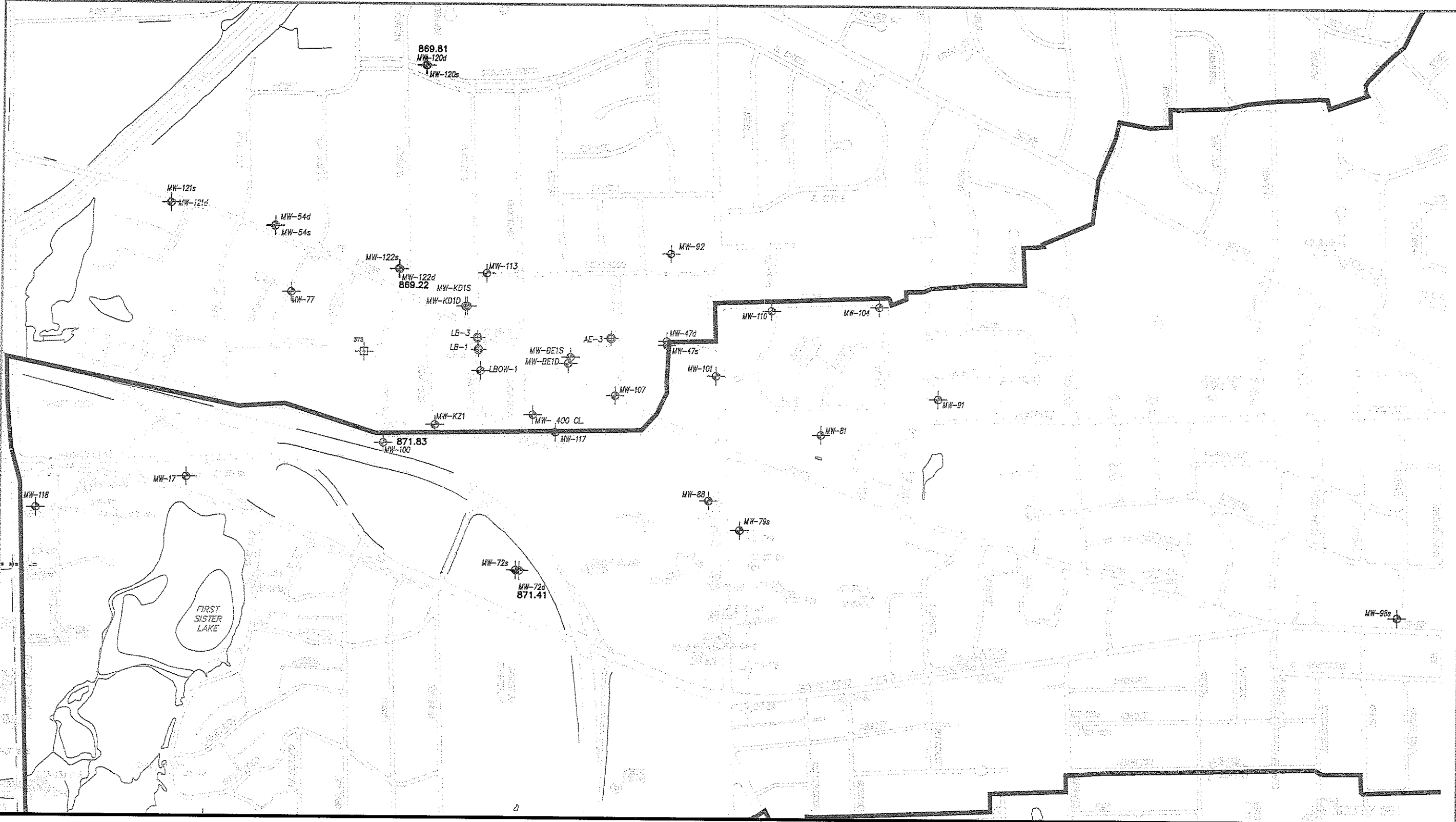
**fic&h**  
engineers  
scientists  
architects  
constructors

fishback, thompson,  
carr & huber, inc.  
Hard copy is  
intended to be  
11"x17" when  
plotted. Scale(s)  
indicated and  
graphic quality may  
not be accurate for  
any other size.

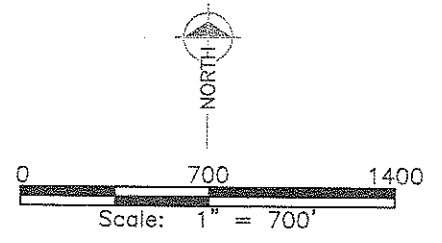
**Pail Life Sciences**  
Scio Twp., Washtenaw County, Michigan  
Evergreen Area  
Water Level Testing Report

PROJECT NO.  
F96502  
FIGURE NO.  
**2**

M:\CUSTOM\ACAD2008\SYMBOLS\B-18X24.DWG R:\96502\1W-18 PUMP TEST\PUMPING SURF.DWG U:\CADD\96502\DWG\AERIAL2003.DWG U:\CADD\96502\MASTER\2009 POTENTIOMETRIC\FB-3099D\FB3099.DWG  
M:\CUSTOM\ACAD2008\SYMBOLS\B-24X36.DWG R:\96502\1W-18 PUMP TEST\PUMPING W.TW-18P\READING\96502\MASTER\022508\FSC-E1 DUPOINT.DWG U:\CADD\96502\MASTER\2009 POTENTIOMETRIC\FB-3099D\FB3099.DWG  
PLOT INFO: U:\CADD\96502\DWG\CONTOUR MAPS NEW BASE 2002.DWG DATE: 3/18/2009 TIME: 5:05:00 PM USER: ADE



- LEGEND**
- ⊕ - MONITOR WELL USED FOR STUDY
  - ⊕ - MONITOR WELL
  - ⊕ - RESIDENTIAL WELL
  - ⊕ - PURGE WELL
  - ⊕ - HYDROGEOLOGIC TEST BORING
  - ⊕ - UV/OX. TREATMENT SYSTEM
  - ⊕ - TEMPORARY PURGE WELL
  - ▲ - SURFACE WATER ELEVATION POINT



PUMPING CONDITIONS	
LB-1:	100 GALLONS PER MINUTE
LB-3:	85 GALLONS PER MINUTE
AE-3:	15 GALLONS PER MINUTE

**PLOTTED WATER LEVEL DATA**  
**DEEP AQUIFER**  
**JANUARY 21, 2009**

**fic&h**  
engineers  
scientists  
architects  
constructors

fehbeck, thompson,  
carr & huber, inc.  
Hard copy is  
intended to be  
11"x17" when  
plotted. Scale(s)  
indicated and  
graphic quality may  
not be accurate for  
any other size.

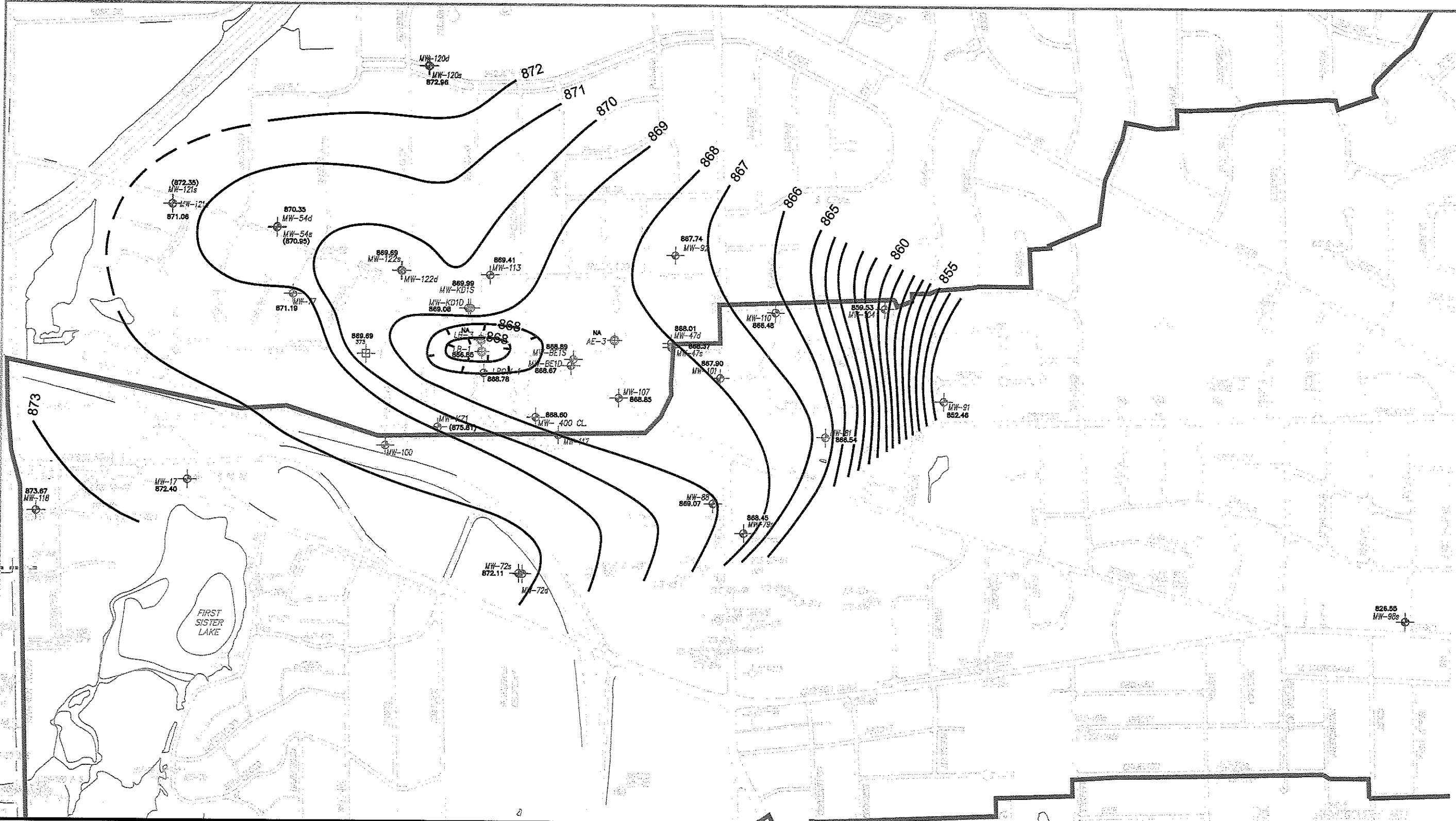
**Pall Life Sciences**  
Scio Twp., Washtenaw County, Michigan  
Evergreen Area  
Water Level Testing Report

PROJECT NO.  
F96502

FIGURE NO.

**3**

M:\CUSTOM\ACAD2008\SYMBOLS\18-18X24.DWG R:\96502\18-18 PUMP TEST\18-18 PUMP TEST\SURF.DWG U:\CADD\96502\MASTER\2009 POTENTIOMETRIC\F96502.DWG  
 M:\CUSTOM\ACAD2008\SYMBOLS\18-24X36.DWG R:\96502\18-18 PUMP TEST\18-18 PUMP TEST\SURF.DWG U:\CADD\96502\MASTER\2009 POTENTIOMETRIC\F96502.DWG  
 PLOT INFO: U:\CADD\96502\DWG\CONTOUR MAPS NEW BASE 2002.DWG DATE: 3/18/2009 TIME: 4:38:57 PM USER: ADE  
 M:\CUSTOM\ACAD2008\SYMBOLS\18-18X24.DWG R:\96502\18-18 PUMP TEST\18-18 PUMP TEST\SURF.DWG U:\CADD\96502\MASTER\2009 POTENTIOMETRIC\F96502.DWG  
 M:\CUSTOM\ACAD2008\SYMBOLS\18-24X36.DWG R:\96502\18-18 PUMP TEST\18-18 PUMP TEST\SURF.DWG U:\CADD\96502\MASTER\2009 POTENTIOMETRIC\F96502.DWG

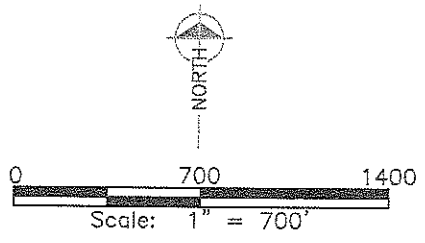


**fic&h**  
 engineers  
 scientists  
 architects  
 constructors

fishbeck, thompson,  
 carr & huber, inc.  
 Hard copy is  
 intended to be  
 11"x17" when  
 plotted. Scales  
 indicated and  
 graphic quality  
 may not be accurate  
 for any other size.

**Pai Life Sciences**  
 Scio Twp., Washtenaw County, Michigan  
 Evergreen Area  
 Water Level Testing Report

**LEGEND**  
 ◉ - MONITOR WELL USED FOR STUDY  
 ◉ - MONITOR WELL  
 ◉ - RESIDENTIAL WELL  
 ◉ - PURGE WELL  
 ◉ - HYDROGEOLOGIC TEST BORING  
 ◉ - UV/OX. TREATMENT SYSTEM  
 ◉ - TEMPORARY PURGE WELL  
 ▲ - SURFACE WATER ELEVATION POINT  
 ~ - POTENTIOMETRIC CONTOUR (ug/L)  
 (875.83) - DATA NOT CONTOURED



PUMPING CONDITIONS	
LB-1:	50 GALLONS PER MINUTE
LB-3:	50 GALLONS PER MINUTE
AE-3:	0 GALLONS PER MINUTE

**SHALLOW POTENTIOMETRIC  
 SURFACE TEST PERIOD 1  
 FEBRUARY 3, 2009**

PROJECT NO.  
 F96502

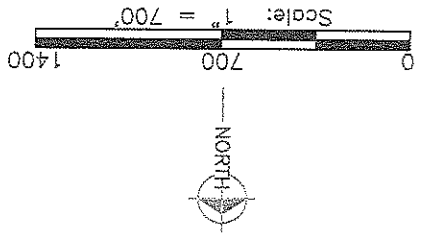
FIGURE NO.

4



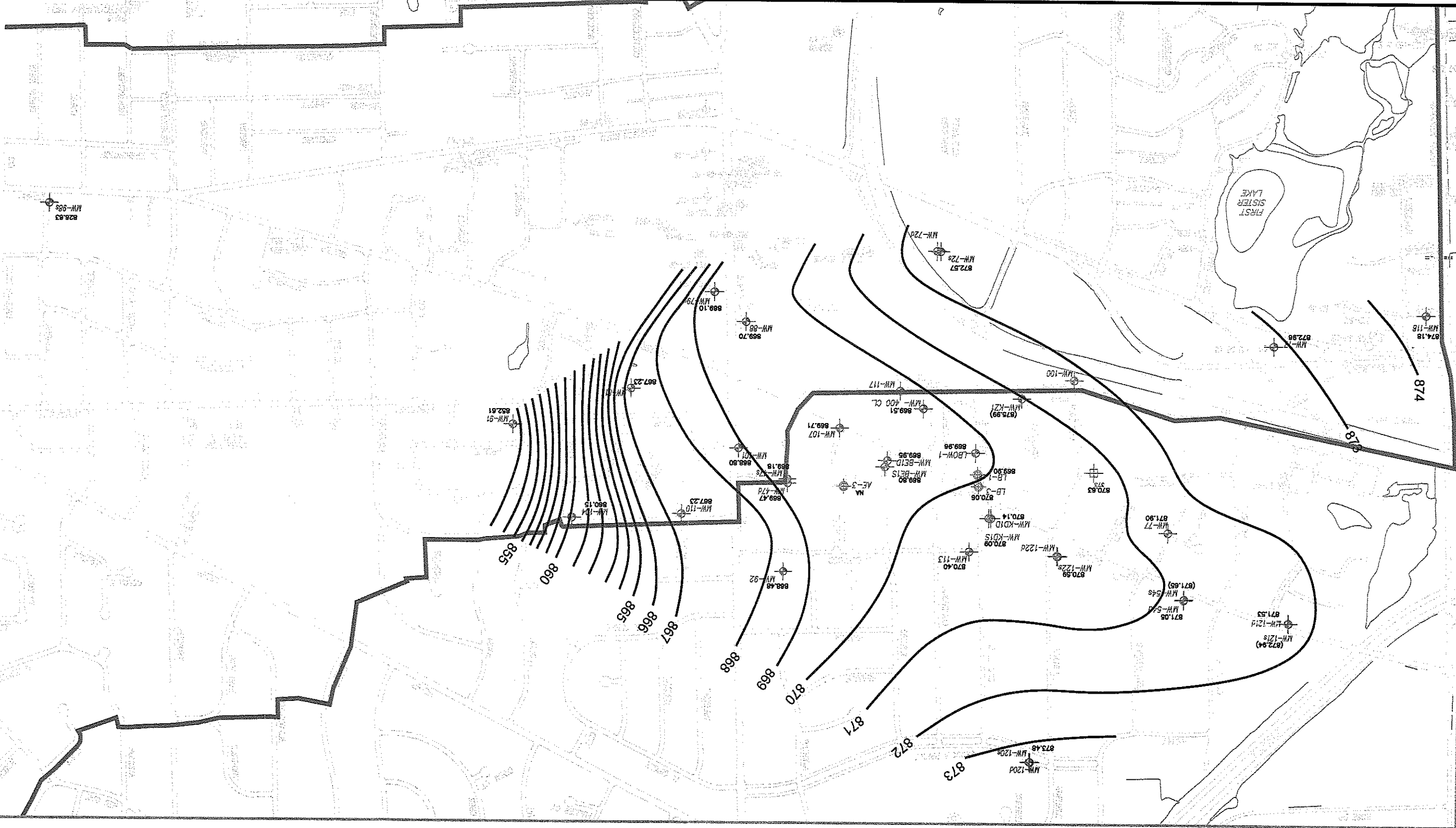
- MONITOR WELL USED FOR STUDY
- MONITOR WELL
- RESIDENTIAL WELL
- PURGE WELL
- HYDROGEOLOGIC TEST BORING
- UV/OX. TREATMENT SYSTEM
- TEMPORARY PURGE WELL
- SURFACE WATER ELEVATION POINT
- POTENTIOMETRIC CONTOUR (ug/L)
- (875.83) -- DATA NOT CONTOURED

LEGEND



PUMPING CONDITIONS	
LB-1:	0 GALLONS PER MINUTE
LB-3:	0 GALLONS PER MINUTE
AE-3:	0 GALLONS PER MINUTE

SHALLOW POTENTIOMETRIC  
SURFACE TEST PERIOD 2  
FEBRUARY 10, 2009



Pall Life Sciences  
Scio Twp., Washtenaw County, Michigan

Evergreen Area  
Water Level Testing Report

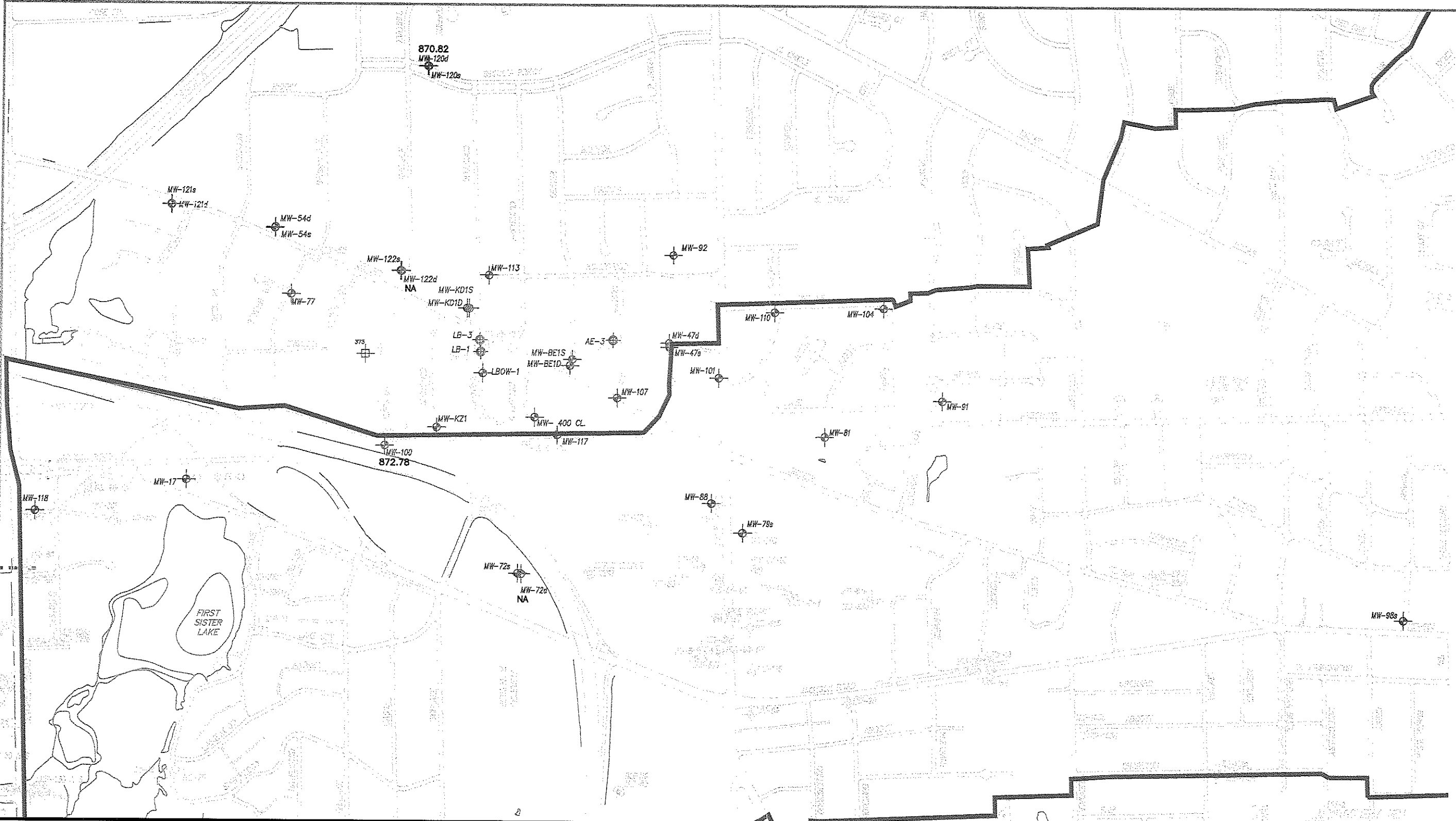
**ftch**  
engineers  
scientists  
architects  
constructors  
fishbeck, thompson,  
carr & huber, pc.  
Hard copy is  
referred to the  
11"x17" when  
plotted. Scales)  
indicated and  
graphic quality may  
not be accurate for  
any other size.

PROJECT NO.  
F96502

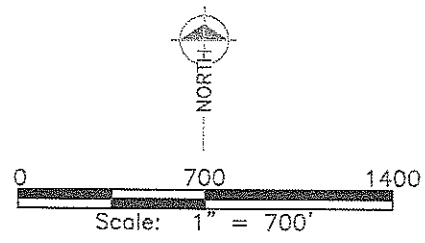
FIGURE NO.  
6



M:\CUSTOM\ACAD2008\SYMBOLS\B-18X24.DWG R:\96502\1W-18 PUMP TEST\PUMPING SURF.DWG U:\CAD\96502\DWG\AERIAL2003.DWG U:\CAD\96502\RASTER\2009 POTENTIOMETRIC\FB-X-88D\96502.DWG  
 M:\CUSTOM\ACAD2008\SYMBOLS\B-24X36.DWG R:\96502\1W-18 PUMP TEST\PUMPING W.TW-18BUREAU\96502\RASTER\022508\FSC-E1 DUPONT.TE\CADD\96502\RASTER\2009 POTENTIOMETRIC\FB-X-88D\96502.DWG  
 PLOT INFO: U:\CAD\96502\DWG\CONTOUR MAPS NEW BASE 2002.DWG DATE: 3/18/2009 TIME: 5:07:10 PM USER: ADE



- LEGEND**
- ⊕ - MONITOR WELL USED FOR STUDY
  - ⊙ - MONITOR WELL
  - ⊘ - RESIDENTIAL WELL
  - ⊚ - PURGE WELL
  - ⊛ - HYDROGEOLOGIC TEST BORING
  - ⊜ - UV/OX. TREATMENT SYSTEM
  - ⊝ - TEMPORARY PURGE WELL
  - ▲ - SURFACE WATER ELEVATION POINT
  - NA - DATA NOT AVAILABLE OR QUALITY SUSPECT



PUMPING CONDITIONS	
LB-1:	0 GALLONS PER MINUTE
LB-3:	0 GALLONS PER MINUTE
AE-3:	0 GALLONS PER MINUTE

**PLOTTED WATER LEVEL DATA  
 DEEP AQUIFER  
 FEBRUARY 10, 2009**

**figh**  
 engineers  
 scientists  
 architects  
 constructors

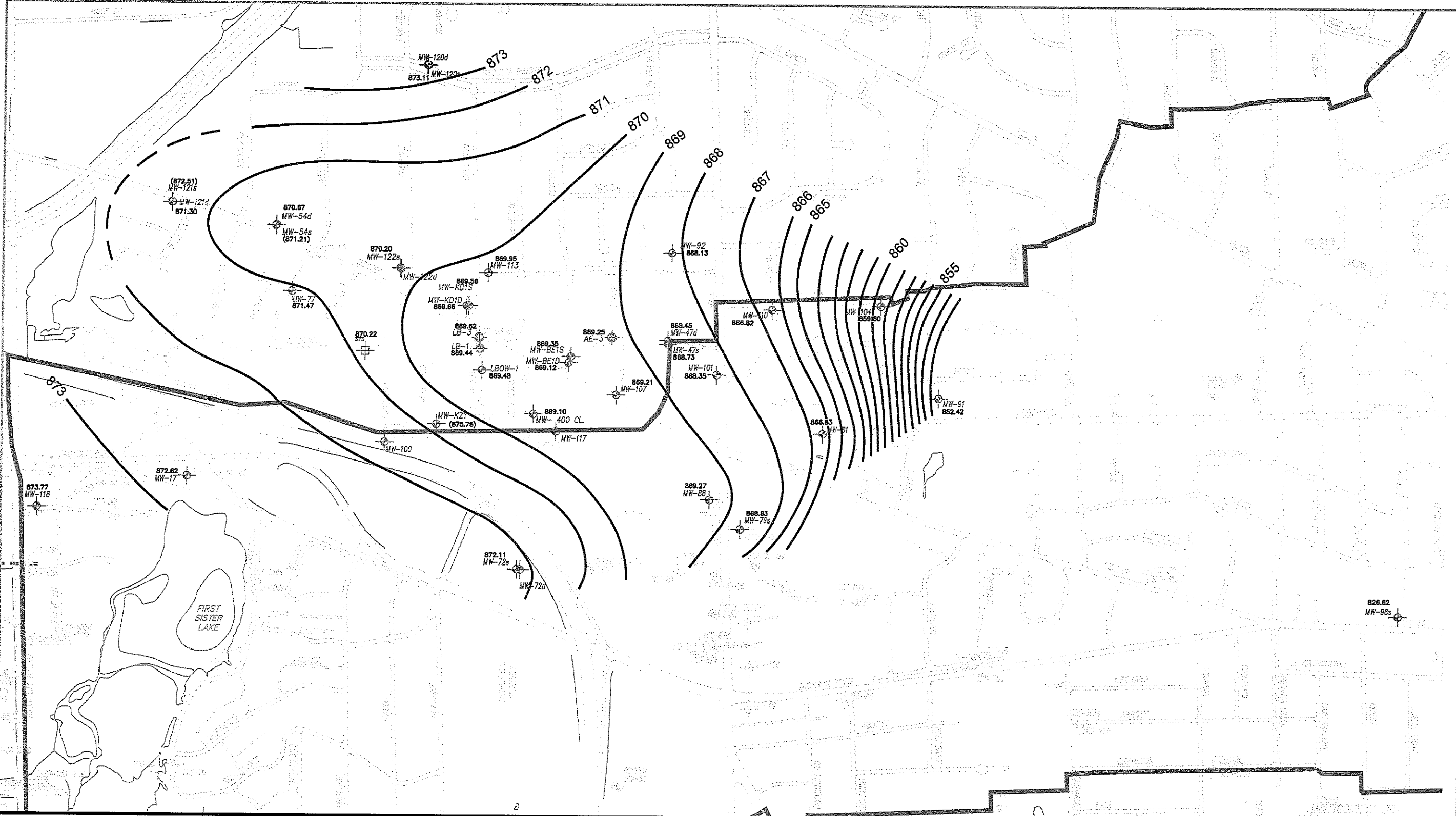
fishbeck, thompson,  
 carr & huber, inc.  
 Hard copy is  
 intended to be  
 11"x17" when  
 plotted. Scale(s)  
 indicated and  
 graphic quality may  
 not be accurate for  
 any other size.

**Pall Life Sciences**  
 Scio Twp., Washtenaw County, Michigan  
 Evergreen Area  
 Water Level Testing Report

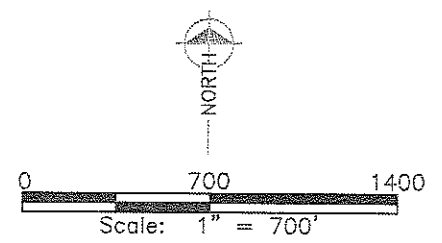
PROJECT NO.  
 F96502  
 FIGURE NO.  
**7**



M:\CUSTOM\ACAD2008\SYMBOLS\B-18X24.DWG R:\96502\TW-1B PUMP TEST\PUMPING SURF.DWG U:\CADD\96502\DWG\AERIAL\_2003.DWG U:\CADD\96502\MASTER\2009 POTENTIOMETRIC\FIB-0399D\9651  
M:\CUSTOM\ACAD2008\SYMBOLS\B-24X36.DWG R:\96502\TW-1B PUMP TEST\PUMPING W... U:\CADD\96502\DWG\AERIAL\_2003.DWG U:\CADD\96502\MASTER\2009 POTENTIOMETRIC\FIB-0399D\9651



- LEGEND**
- ⊕ - MONITOR WELL USED FOR STUDY
  - ⊕ - MONITOR WELL
  - ⊕ - RESIDENTIAL WELL
  - ⊕ - PURGE WELL
  - ⊕ - HYDROGEOLOGIC TEST BORING
  - ⊕ - UV/OX. TREATMENT SYSTEM
  - ⊕ - TEMPORARY PURGE WELL
  - ▲ - SURFACE WATER ELEVATION POINT
  - - POTENTIOMETRIC CONTOUR (ug/L)
  - (875.83) - DATA NOT CONTOURED



PUMPING CONDITIONS	
LB-1:	0 GALLONS PER MINUTE
LB-3:	0 GALLONS PER MINUTE
AE-3:	0 GALLONS PER MINUTE

**SHALLOW POTENTIOMETRIC  
SURFACE TEST PERIOD 2  
FEBRUARY 16, 2009**

**fic&h**  
engineers  
scientists  
architects  
constructors

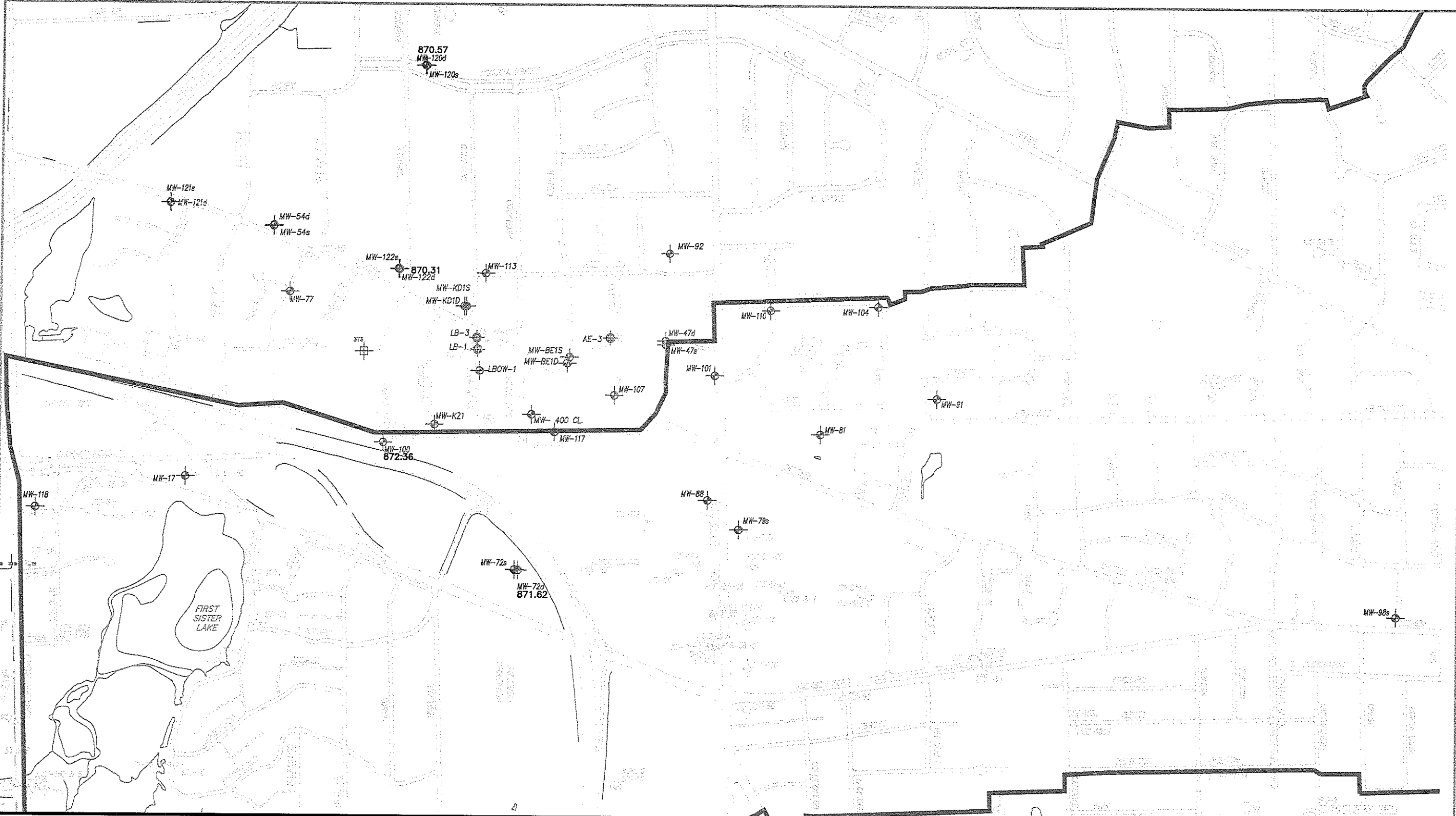
fenwick, thompson,  
carr & huber, inc.  
Hard copy is  
intended to be  
11"x17" when  
plotted. Scale(s)  
indicated and  
graphic quality may  
not be accurate for  
any other size.

**Pall Life Sciences**  
Scio Twp., Washtenaw County, Michigan  
Evergreen Area  
Water Level Testing Report

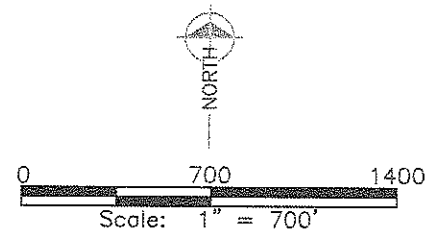
PROJECT NO.  
F96502  
FIGURE NO.  
**8**

©Copyright 2009 All Rights Reserved

M:\CUSTOM\ACAD2008\SYMBOLS\18-18\24.DWG R:\96502\18-18 PUMP TEST\PUMPING SURF.DWG U:\CADD\96502\RASTER\2009 POTENTIOMETRIC.FIG X:\96502\RASTER\96502\ACAD2008\SYMBOLS\18-18\24.DWG  
 M:\CUSTOM\ACAD2008\SYMBOLS\18-24\36.DWG R:\96502\18-18 PUMP TEST\PUMPING W.L. T\188\RASTER\96502\RASTER\022505PSC-E1 DUFONT.TIF CADD 96502 RASTER 2009 POTENTIOMETRIC.FIG X:\96502\RASTER\96502\ACAD2008\SYMBOLS\18-18\24.DWG  
 PLOT INFO: U:\CADD\96502\DWG\CONTOUR MAPS NEW BASE 2002.DWG DATE: 3/18/2009 TIME: 5:08:25 PM USER: ADE



- LEGEND**
- ⊕ - MONITOR WELL USED FOR STUDY
  - ⊕ - MONITOR WELL
  - ⊕ - RESIDENTIAL WELL
  - ⊕ - PURGE WELL
  - ⊕ - HYDROGEOLOGIC TEST BORING
  - ⊕ - UV/OX. TREATMENT SYSTEM
  - ⊕ - TEMPORARY PURGE WELL
  - ▲ - SURFACE WATER ELEVATION POINT



PUMPING CONDITIONS	
LB-1:	0 GALLONS PER MINUTE
LB-3:	0 GALLONS PER MINUTE
AE-3:	0 GALLONS PER MINUTE

**PLOTTED WATER LEVEL DATA  
 DEEP AQUIFER  
 FEBRUARY 16, 2009**

**fic&h**  
 engineers  
 scientists  
 architects  
 constructors

fishbeck thompson,  
 cam & huber, inc.  
 Hard copy is  
 intended to be  
 11" x 17" when  
 plotted. Scale(s)  
 indicated and  
 graphic quality may  
 not be accurate for  
 any other size.

**Pai Life Sciences**  
 Scio Twp., Washtenaw County, Michigan  
 Evergreen Area  
 Water Level Testing Report

PROJECT NO.  
 F96502  
 FIGURE NO.  
**9**