



**Clean Michigan Initiative
Nonpoint Source Grant**



Conservation Resource Alliance
 Laura Kuehn, Local Contact
 Telephone: (231) 946-6817
 Fax: (231) 947-5441
 Email: cra@traverse.com

Big Sable Watershed Restoration Phase I

October 1st, 2000 - September 30th, 2003

The Big Sable River includes 24 miles of mainstream and a number of tributaries that flow through Lake and Mason counties and empty into Hamlin Lake. The river's headwaters and upstream are recognized for both brook and brown trout, while downstream to Hamlin Lake is noted mostly for brown trout. Hamlin Lake is recognized as one of west Michigan's best fishing spots. The entire watershed comprises 178 square miles, of which over 70% is forested.

The Hamlin Lake Improvement Board worked with professional engineers on a water quality study in 1993 that concluded an increase in pollution inputs to the lake as little as 10% above current levels would cause the quality of the lake to rapidly decline. The monitoring results indicated that the quality of Hamlin Lake is directly influenced by the quality of the Big Sable River, which is the largest single source of water to the lake and potentially, the greatest source of pollution. The goal of this project was to reduce several of the larger contributors of sediment into Hamlin Lake



Grant Amount: \$ 142,000
Match Funds: \$ 48,000

Total Amount: \$ 200,000

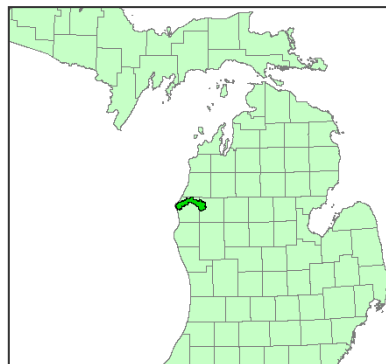
Best Management Practices:

- 7 stream banks stabilized with rock riprap, mulch & brush, and revegetation
- 1 road-stream crossing stabilized



Annual Load Reductions:

- 109 tons of sediment reduced annually

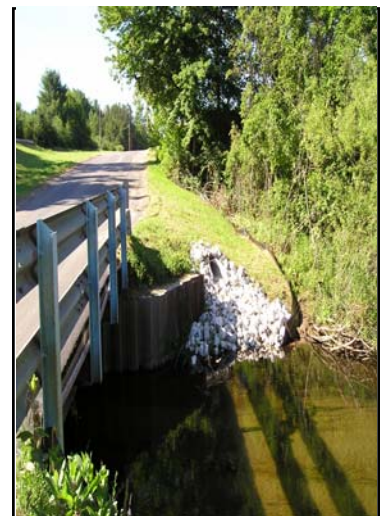


Partners involved:

- MDEQ
- MDNR
- United States Forest Service
- USDA-Natural Resource Conservation Service
- Manistee County Road Commission
- Mason-Lake Conservation District
- Hamlin Township
- Freesoil Township
- Hamlin Lake Preservation Society
- Dow Chemical of Ludington
- Mason County Fin and Feather Club
- Ludington Daily News

I&E Activities:

- CRA-organized river trip for local residents
- Field tour held by Big Sable Watershed Committee
- Project articles in Ludington Daily News





Site 24-A Before

Description: Site 24 downstream prior to stabilization.



Site 24-A After

Description: Site 24 downstream after stabilization with 120 cubic yards of rock riprap, spanning a distance of 175 linear feet.



Site 30 Before

Description: Looking at Site 30 (downstream) prior to bank stabilization.



Site 30 After

Description: Looking at Site 30 (upstream) after prior to bank stabilization with 200 cubic yards of rock riprap, log construction, and revegetation, spanning a length of 300 linear feet.