



DEQ Clean Michigan Initiative  
 Nonpoint Source Grant  
 1999-0047



Phone: (231) 775-0181  
 Fax: (231) 775-8755

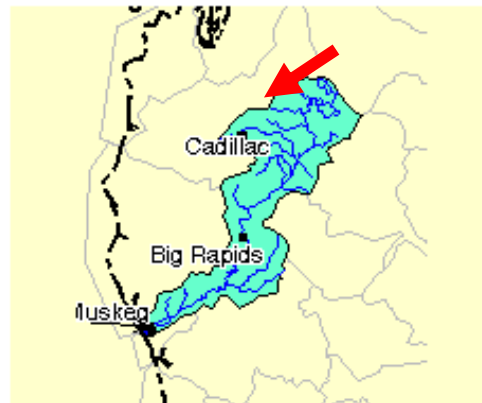
## Upper Clam River Stabilization Project

October 1, 2000 to December 31, 2001

The Upper Clam River Watershed is a tributary of the Muskegon River. It originates in Wexford County and consists of approximately 64,000 acres. Land use within this watershed is 62% forest land and 10% agricultural land.

The goals of the project were to control runoff of sediment and pollutants from the Plett Road approach to the Clam River. This road was determined to be the single largest contributor of sediment to the Clam River.

The City of Cadillac received the "2001 Conservationist of the Year" award from the Wexford County Soil Conservation District for this project.



Grant Amount: \$119,836.00

Matching Funds: \$69,370.00

**TOTAL: \$189,206.00**

### Best Management Practices:

- 1 Storm water detention pond
- 9,300 square yards gravel base
- 2,800 linear feet of bituminous paving
- Seed and mulch



**TOTAL: \$111,337.00**

Sediment Load Reduction:  
**61 tons annually**

### I&E Activities:

- Article in the "Cadillac News" (summer of 2001)



### Project Partners:

- Wexford Soil & Water Conservation District
- USDA Soil Conservation Service

Plett Road Improvements:



**Before:** Runoff from dirt/gravel road was entering the Clam Creek due to the use of un-anchored sediments as road surface.



**After:** Bituminous paving was implemented to correct the runoff problem.



**Before**



**After**