



**Federal Clean Water Act
Section 319 Grant
2004-0152**



City of Battle Creek

Telephone: (269) 966-0712

Fax: (269) 966-3482

Email: CMKosmowski@ci.battle-creek.mi.us



City of Battle Creek City Hall Runoff Project

July 2004 through December 2006

The City of Battle Creek City Hall Runoff Project was designed to treat storm water runoff from a municipal complex adjacent to the Battle Creek River, a tributary of the Kalamazoo River. The goal of the project was to treat one-half inch of rainstorm runoff by incorporating several best management techniques (BMPs) that promote infiltration and low impact development. The BMPs included a vegetated roof system on the Police Department roof, infiltration of runoff water from the impervious walkway in front of the Police Department building, and infiltration from the parking lots behind and adjacent to City Hall and the Police Department buildings.

Another goal of the City of Battle Creek City Hall Runoff Project was to increase community awareness of low impact development techniques and their water quality protection benefits. The City is promoting the area as a demonstration site for local builders and homeowners.

Grant Amount: \$329,421

Match Funds: \$438,963

Total Amount: \$768,384



Kalamazoo River Watershed

Best Management Practices:

- Vegetated roof system incorporating low-growing sedum with a native plant border
- Installation of a rain garden
- Installation of underground storm water collector and recharge polyethylene chambers for the parking lots behind and adjacent to the complex buildings
- Installation of a small bioretention basin

Annual Pollutant Load Reductions:

- Sediment - 3.8 tons
- Nitrogen - 101 lbs
- Phosphorous - 16 lbs
- Volume - 68 %



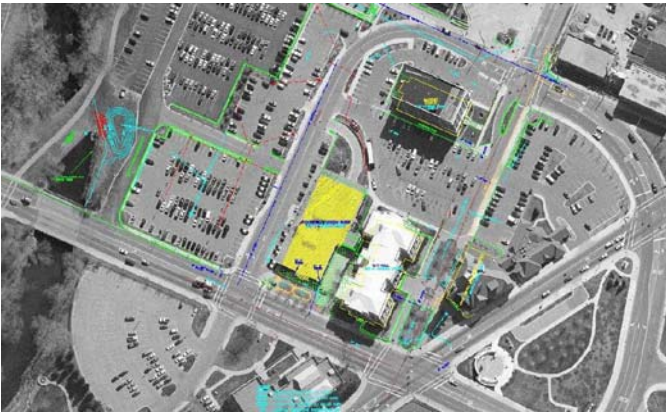
Partners involved:

- City of Battle Creek
- The Battle Creek/Rice Creek Watershed Management Projects
- Calhoun Conservation District
- Leila Arboretum Society
- Calhoun County Road Commission

I&E Activities:

- Presentations to Service Groups
- Newspaper Articles
- Public reception
- Public tours
- National "Public Works Project of the Year Award" in the Structures Less than \$2 Million Category from the American Public Works Association





Project Area Before: The aerial photo shows the project area, which drains to the Battle Creek River (pictured on the left).



Underground storm water collector and recharge polyethylene chambers



Police Dept Roof - Before



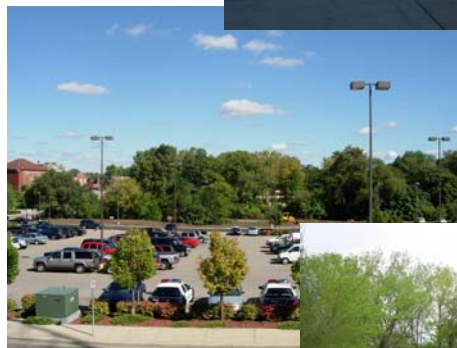
← Rain garden installation in front of Police Department Building



Police Dept Roof - After, with vegetated roof system



Front of Police Department Building before rain garden installation →



Bioretention Basin adjacent to the Battle Creek River

