



**Federal Clean Water Act
Section 319 Grant**
2005-0117



River Raisin Watershed Council
Telephone: (517) 265-5599
Fax: (517) 263-0780
Email: gayle.mitchell@comcast.net

River Raisin Watershed Management Plan

February 6, 2006 through September 30, 2009

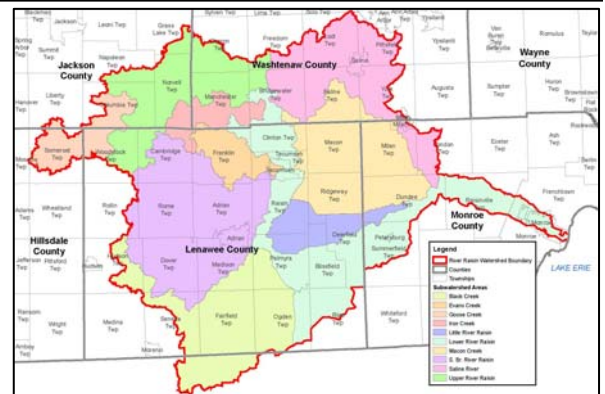
The River Raisin watershed encompasses approximately 1,059 square miles in southeastern Michigan (with a small portion in Ohio) and enters Lake Erie at Monroe Harbor. The Raisin's watershed is 75% agricultural and is dotted with a few cities and a number of small villages and towns. Current water quality conditions in the watershed reflect the legacy of land conversion to agriculture, as well as industrial pollution. The loss of wetlands and conversion to intensive agriculture has resulted in extreme no-point source contributions that have degraded water quality and biological health in the River Raisin. Both nitrate and pathogens are pollutants of major concern in the River Raisin.

The overall goal of this planning project was to create a watershed management plan that helps achieve the Total Maximum Daily Loads (TMDLs), improves water-quality impairments, promotes broad cooperation, provides ideas and momentum, and prioritizes problems and opportunities in the watershed. The two primary goals of the watershed management plan are to achieve all designated uses in the river and help to promote a lifestyle and commerce that achieves the triple top line - environmental and economic sustainability and social equity. One of the biggest challenges to implementing the plan will be inspiring and mobilizing watershed residents to take a more active role in stewardship. A key project is a voluntary performance-based environmental control pilot project for agriculture. Key public education and involvement programs include a program that engages school children in place-based learning and a biennial watershed conference that includes a film festival for filmmakers of all ages.

Grant Amount: \$ 277,100

Match Funds: \$ 149,100

Total Amount: \$ 426,200



Partners involved:

- Adrian College
- City of Adrian
- JFNNew
- Lenawee Conservation District
- Lenawee County Drain Commissioner
- Michigan Dept. of Environmental Quality
- Monroe County Drain Commissioner
- Raisin Valley Land Trust
- River Raisin Watershed Council
- Stantec
- The Nature Conservancy
- University of Michigan - School of Natural Resources and Environment

I&E Activities:

- Four public meetings held in Pittsfield Township, Manchester, Blissfield, and Adrian to discuss the plan goals and objectives and watershed problems in an open forum.
- A social survey was conducted to identify local perception of the watershed and issues of concern. Thirty-four people responded.
- A field trip to the Ives Road Fen and a River Raisin Restoration Tour and Plant Sale held during the planning process introduced many individuals to some of the conservation and restoration efforts in the watershed.
- The Adopt-A-Stream program expanded from 12 to 20 monitoring sites and from annual to semi-annual monitoring during the development of the watershed plan.

