



**Clean Michigan Initiative  
Nonpoint Source Program**  
#2004-0117



**Marquette County  
Conservation District**  
Sarah Janda, Project Manager  
Phone: (906) 226-2461  
Fax: (906) 228-4484

**Lower Dead River Watershed Implementation Project**

April 1, 2005 - October 31, 2008

The Lower Dead River is approximately 22 square miles in size and located in the eastern section of Marquette County. The watershed includes the political boundaries of Negaunee Township, Marquette Township, and the City of Marquette. Though land use of the watershed is dominantly forested (65%), impervious surfaces and urban/residential land use (30%) continues to increase.

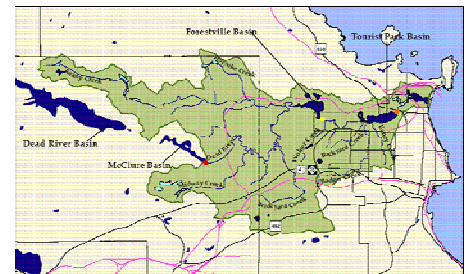
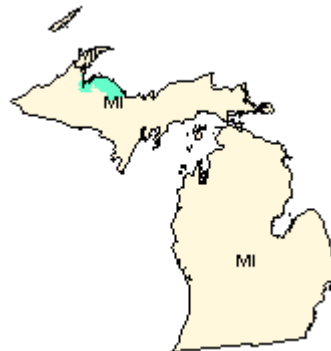
Under a previous EPA Section 319 Planning Grant (Tracking Code #2000-0199) a watershed management plan was developed and approved by the Michigan Department of Environmental Quality. The plan identifies best management practices that address storm water runoff from development pressures and sedimentation from new construction and roadways.

The goal of this project was to implement best management strategies that protect and restore water quality to the Dead River watershed and ultimately the Lake Superior Basin. In total, 11 watershed projects were implemented under the Lower Dead River Watershed Project, with partners exceeding their original 25% match commitment.



**Grant Amount: \$ 244,787.16**  
**Match Funds: \$ 104,328.61**

**Total Amount: \$ 349,115.77**



**Best Management Practices:**

- Diversion
- Erosion Control Structure
- Grade Stabilization Structure
- Permanent Conservation Easement
- Road-Stream Crossing
- Stream Bank Stabilization



**Annual Load Reductions:**

- 232.5 tons/year sediment reduction
- 200 lbs/year Phosphorus reduction
- 401 lbs/year Nitrogen reduction

**Partners involved:**

- Marquette County Conservation District
- Lower Dead River Watershed Council
- Natural Resources Conservation Service
- Superior Watershed Partnership
- Central Lake Superior Land Conservancy
- Marquette County Road Commission
- City of Marquette
- Marquette Township
- North Country Engineering
- Longyear Corporation
- Lake Superior & Ishpeming Railroad
- Upper Peninsula Power Company



Photo of cribwall installation on Nordwald Creek, October 2008



**Site #22 - Midway Creek/LS&I Railroad Crossing ('06).**

**Before - Outlet of culvert was impounded due to erosion occurring at the top slope of the bank.**



**Site #22 - Midway Creek/LS&I Railroad Crossing ('06).**

**After - Banks were reshaped and toe of slope stabilized with large boulders; banks were restored with mulch blanket and native seed mix.**



**Site #11 - Reany Creek/County Road 510 culvert replacement ('08).**

**Before - Headwall collapsed causing an obstruction in-stream; sediment deposition from road.**



**Site #11 - Reany Creek/County Road 510 culvert replacement ('08).**

**After - Culvert was replaced with a 100' long, 4.5' diameter pipe; inlet and outlet were stabilized with rock riprap.**