

Upper Grand River Implementation Project

January 2006 – December 2008

The Upper Grand River Implementation Project (UGRIP) was designed to address erosion and sedimentation issues in a 76,603-acre priority area of the Upper Grand River Watershed. In the 2003 Upper Grand River Watershed Management Plan, the sub-basins in this priority area ranked as the worst in the entire watershed for nitrate/nitrite pollution, off-field soil loss, adequacy of riparian buffer vegetation, and amount of remaining wetlands. This project has focused the efforts of 26 partner organizations, ranging from government agencies to non-profit organizations, to carry out the goals of: 1) implementing Best Management Practices in the priority area; 2) educating residents about water quality issues and encouraging public involvement in watershed protection; 3) promoting sustainable land use planning; and 4) identifying and prioritizing sources of pollution in the Huntoon Creek sub-basin, the sub-basin ranked the poorest in the Watershed Management Plan. The tremendous success of UGRIP is perhaps best indicated by the increased enthusiasm and participation by watershed residents throughout the project and the dedication to new projects coming up in the future.

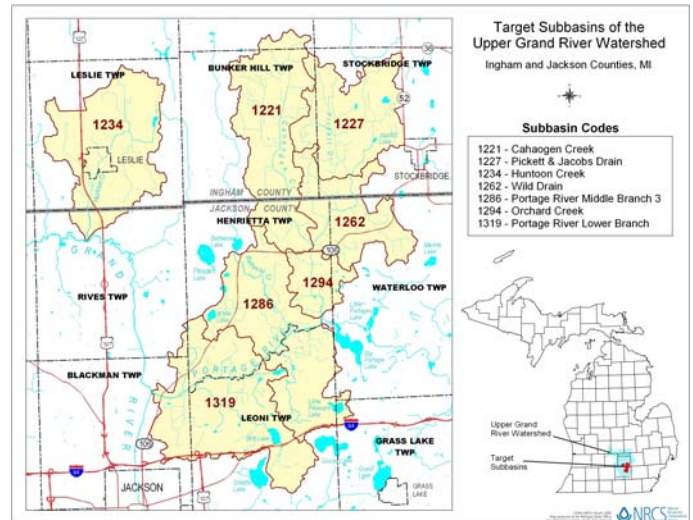
Grant Amount: \$281,160

Match Funds: \$222,690

Total Amount: \$503,850

Partners involved:

- ASTI Environmental
- Dahlem Conservancy
- Ducks Unlimited
- Grand River Environmental Action Team (G.R.E.A.T.)
- Henrietta Conservation & Recreation Conservancy
- Henrietta, Rives, and Waterloo Townships
- Ingham Conservation District
- Ingham County Drain Commissioner
- Jackson Ag Council
- Jackson Audubon Society
- Jackson County Drain Commissioner
- MI Department of Environmental Quality
- MI Groundwater Stewardship Program
- MI State University Extension
- Michigan Audubon Society
- Mid-Michigan Land Conservancy
- Pheasants Forever
- Potawatomi RC&D Council
- Region 11 Planning Commission
- Upper Grand River Watershed Alliance
- USDA-Farm Service Agency
- USDA-Natural Resources Conservation Service
- Washtenaw Land Trust



I&E Activities:

3 seasons of Adopt-A-Stream
volunteer monitoring program
"Our World of Water" and stream monitoring youth programs (85 classes)
2 volunteer river cleanups
8 water quality and land use workshops
Natural Resource Inventories and Planning & Zoning Reviews for two townships
16 new watershed signs at road crossings
68 informational mailings and media articles
Educational displays at 11 special events
Project website: *(The link provided was broken.)*

Best Management Practices:

Although grant dollars were not used to fund BMPs in this project, a partnership with several agencies allowed for the implementation of these BMPs in the watershed priority area:

- 400 acres of wetland restoration
- 692 acres of conservation cover
- 195 acres in 2 conservation easements
- 33 acres of prescribed grazing
- 2 agricultural containment facilities
- 2 MAEAP verifications
- 1 abandoned well closure
- 1 roof runoff/underground management & use exclusion
- 1 nutrient management plan

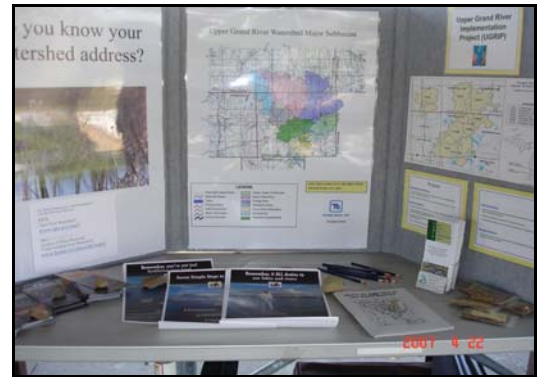




Lending a Hand to
Keep it GRAND!



Volunteers participated in two canoe cleanups on the Portage River (*above left*) and three seasons of the Adopt-A-Stream monitoring program (*above right*) at sites throughout the watershed. A total of 128 volunteers contributed over 500 volunteer hours during the three years of the project!



During the three years of UGRIP, watershed education programs (*above left*) were delivered to over 4,000 total students! In addition, more than 3,300 people learned about the watershed through workshops, tours, and displays at special events (*above right*). Public awareness of the watershed was also increased by installing 16 new road crossing signs (*above middle*) in the project area.



UGRIP partner organizations have focused their efforts to implement Best Management Practices in the project area, such as a 340-acre wetland restoration involving push-outs (*above left*) and serpentine channels (*above middle*). Agrichemical containment facilities, livestock use exclusion, and roof runoff, and underground management practices (*above right*) have also been implemented in the priority area.