



Michigan's
Nonpoint Source
Program

Federal Clean Water Act
Section 319
2008-0016



Macatawa Area Coordinating Council

Telephone: (616) 395-2688

Fax: (616) 395-9411

Email: info@the-macc.org

Macatawa Watershed Project: Rural Program Development

October 1, 2008 through September 15, 2012

The Macatawa Watershed extends 175 square miles in West Michigan and includes Lake Macatawa which is one of the most hypereutrophic lakes in the State of Michigan. Research has documented that the lake suffers from excessive levels of phosphorus and sediment, intense blue green algae blooms (with detectable levels of microcystin) and frequent beach closures due to elevated levels of *E.coli* bacteria. In fact, **91% of the total phosphorus load comes from nonpoint sources**. The ultimate goal of this project was to engage the agricultural community, develop a "model subwatershed" idea for widespread implementation of agricultural best management practices, conduct educational outreach and update the watershed plan to an EPA-approved watershed management plan. Intensive efforts were made to understand historic wetland loss, hydrology and geomorphology changes and identify remaining natural areas for protection.

Grant Amount: \$280,601

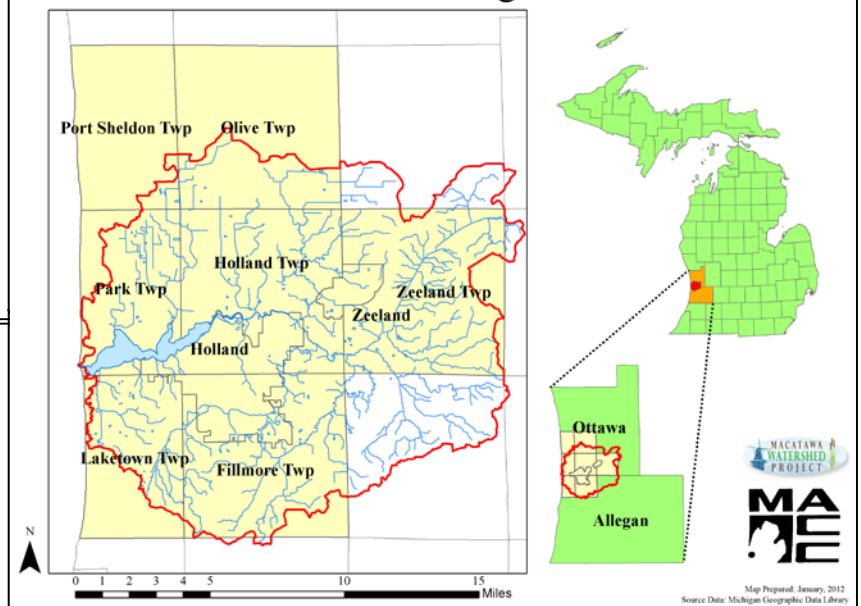
Match Funds: \$147,451

Total Amount: \$428,052

Project Highlights:

- Developed Watershed Management Plan
- Significantly increased participation in monthly watershed committees
- Conducted a SIDMA survey of 150 local farmers
- Completed a detailed inventory of critical agricultural areas
- Completed a road stream crossing assessment of 121 sites
- Developed a Conservation Priority Map and Farmland Preservation Map
- Developed and began implementing "Model Subwatershed" Idea

Macatawa Area Coordinating Council Members



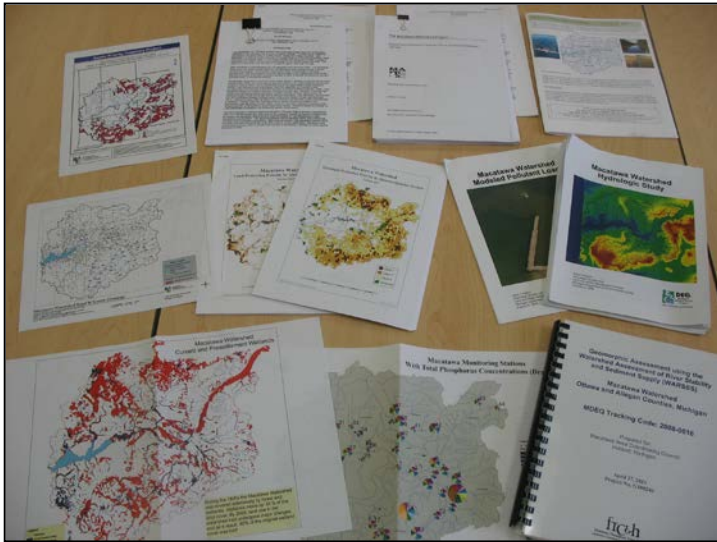
Partners involved:

Outdoor Discovery Center Macatawa Greenway	Laketown Twp
Hope College	Fillmore Twp
City of Holland	Ottawa Co Road Commission
City of Zeeland	Ottawa Co Drain Office
Port Sheldon Twp	Allegan Co Road Commission
Olive Twp	Allegan Co Drain Office
Park Twp	Allegan Conservation District
Holland Twp	Ottawa Conservation District
Zeeland Twp	Ottawa Co Health Dept
Holland BPW	Macatawa Watershed Association
MSUE	West MI Land Conservancy
Ottawa Co Parks	Yonker Farms
Dykhuis Farms	Holland Public Schools
Zeeland Public Schools	ERM
Riverview Group	

I&E Activities:

- Developed a complete Information and Education Strategy for the watershed plan
- Distributed educational materials on septic system maintenance to areas at high risk for failure
- Hosted a Wetlands Workshop for Farmers in Ottawa and Allegan Counties
- Distributed quarterly newsletters
- Developed a Facebook page

9/24/2012



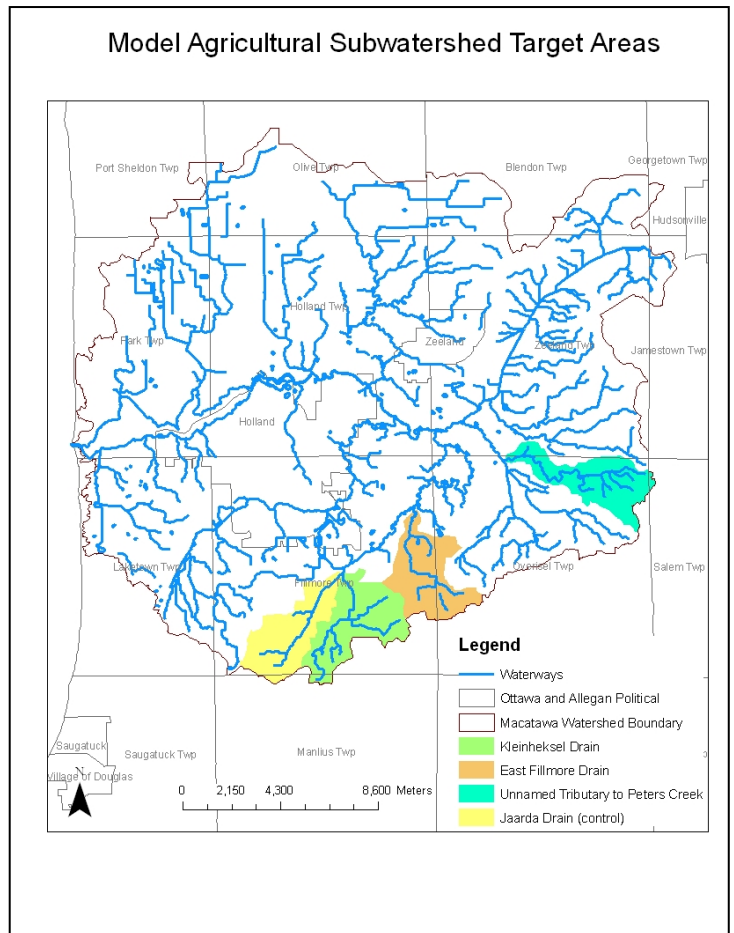
Compilation of the new research that was funded by the grant to develop the watershed management plan



Picture taken during agricultural inventory of critical subwatersheds



Stakeholders participate in a Watershed Visioning Workshop in March 2010



Identified priority agricultural areas and candidates for the "Model Subwatershed" Project