



Portage Creek Priority Protection

January 1, 2014 - December 31, 2016

Making up 10% of the Huron River watershed, the Portage Creek sub-watershed covers 89 square miles. Over 13,000 acres of protected land (public and private) help keep it among the healthiest sub-watersheds in the Huron. Permanent land protection helps meet water quality goals through limiting increases in impervious surface and restricting uses near water bodies. It also reduces the impact on naturally occurring wetlands, filtering nutrients from upland runoff where development does occur. This project completed four permanent conservation easements totaling 120 acres and 13,290 linear feet of stream frontage. Additionally, Legacy held three landowner education meetings, staffed 16 informational "coffee hours" and farmer's market booths, and attended three events held by other organizations to share information on land protection.

Grant Amount: \$287,500.00
Match Funds: \$346,500.00

Total Amount: \$634,000.00



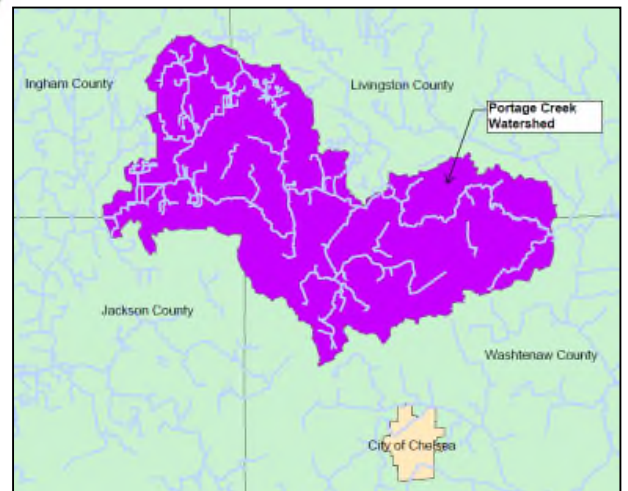
Best Management Practices:



- Permanent conservation easements on 120 acres of land.
- Conservation easements include 13,290 linear feet of stream and river frontage.

Annual Load Reductions:

- Sediment = 12.6 tons
- Phosphorous = 24 pounds
- Nitrogen = 321 pounds



I&E Activities:

- Three landowner workshops on conservation easements
- Sixteen coffee hour or booth sessions offered to landowners
- Mailings concerning conservation easements and water quality



Partners involved:

- Legacy Land Conservancy
- Six Rivers Land Conservancy
- Huron River Watershed Council
- Washtenaw County Parks and Recreation Commission



Coppa: Permanent Conservation Easement



Toma: Permanent Conservation Easement



Thomas: Permanent Conservation Easement



Nester: Permanent Conservation Easement