



Michigan's
Nonpoint Source
Program

Federal Clean Water Act Section 319 Grant

#2016-0015



Trout Unlimited, Inc.

Telephone: (800) 834-2419

Fax: (703) 284-9400

Email: ndemol@tu.org

Rogue River Watershed Wetland Restoration and Land Protection

January 1, 2017 - December 31, 2020

The Rogue River is a major tributary of the Grand River and features an outstanding combination of cold, cool, and warm waters, which support a high range of biological diversity as well as diverse fisheries. The watershed is 167,625 acres and is an extremely important trout fishery in southern Michigan. However, the Rogue River watershed lies in the urban shadow of one of the fastest growing areas in Michigan. The pressures from growth and development could negatively impact the productivity and diversity in this watershed.

The goal of this project was to protect the Rogue River, its tributaries and fisheries from pollution generated by land use change. This project specifically addressed fluctuating water temperature and sedimentation from the loss of wetlands due to land use change. Measurable project objectives included restoring wetlands, updating the current watershed management plan using wetland information, and establishing conservation easements.



Grant Amount: \$235,900

Match Funds: \$271,100

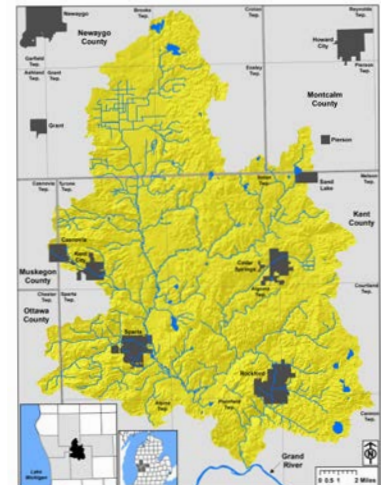
Total Amount: \$507,000

Best Management Practices:

- 4 urban wetlands restored (2.6 acres)
- 50-acre conservation easement

Annual Load Reductions:

- TSS reduction 11,101 lbs/year



I&E Activities:

- Rogue River Watershed Management Plan was updated to provide a framework for wetland assessment, prioritization, and restoration
- Five press releases and media posts



Partners involved:

- City of Cedar Springs
- Cedar Springs Building Development Team
- Cok family
- Deans Excavating
- Land Conservancy of West Michigan
- Moore & Bruggink
- Plaster Creek & Rogue River Green Teams
- Rogue River Watershed Partners
- South Peat Environmental
- Streamside Ecological Services
- US Fish & Wildlife Service
- Volunteers



White Pine Trail Site During Construction:
Before the wetland restoration road runoff was captured by a storm sewer that exits into the northwest corner of this parcel. Other stormwater onsite flowed directly over a mixture of fill and mowed wetland towards Cedar Creek.

White Pine Trail Site After: Stormwater runoff from one and half acres at this site is treated in a 2,250 cubic foot treatment basin near the road. Over 3,000 native wetland plants, forbs, and trees were planted along the edges of the exposed water areas of the basin, slopes of the overflow berm, and the newly excavated drainage swale.



The Cok family worked with the Land Conservancy of West Michigan to permanently protect 124 acres in 2008 with a conservation easement. As part of the current project, 50 acres of property that is directly adjacent to the existing conservation easement property was established. The easement includes the entirety of Nelson Lake, and nearly the full shoreline of Meek Lake. There are adjacent, emergent wetlands to these lakes that are also protected in perpetuity. The lake just outside of the Cok property is experiencing development pressure. The conservation easement eliminates all development in this area, as well as provides buffer zones to the waterways and wetland areas reducing potential temperature and sediment loadings.