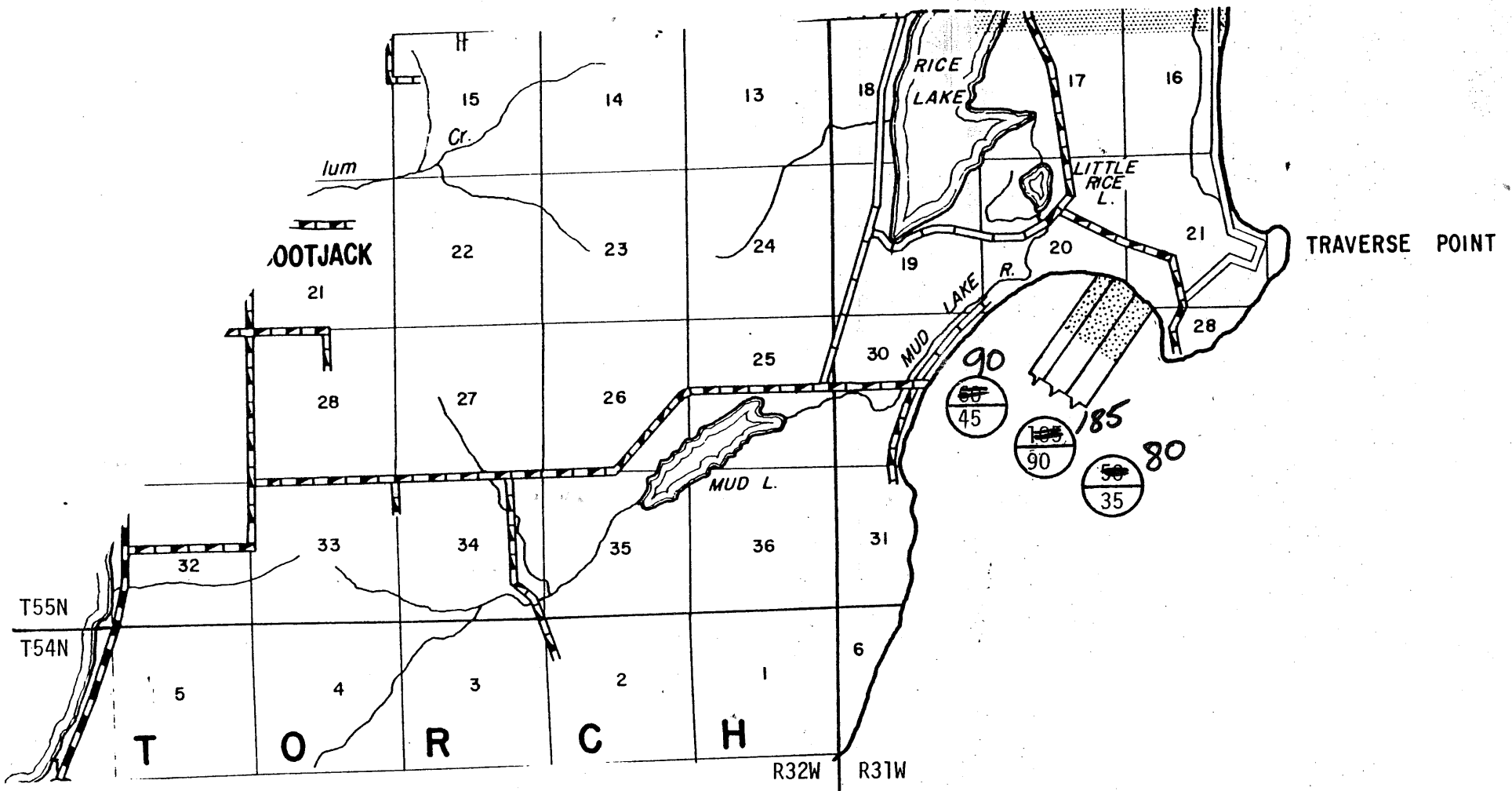
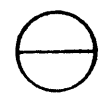


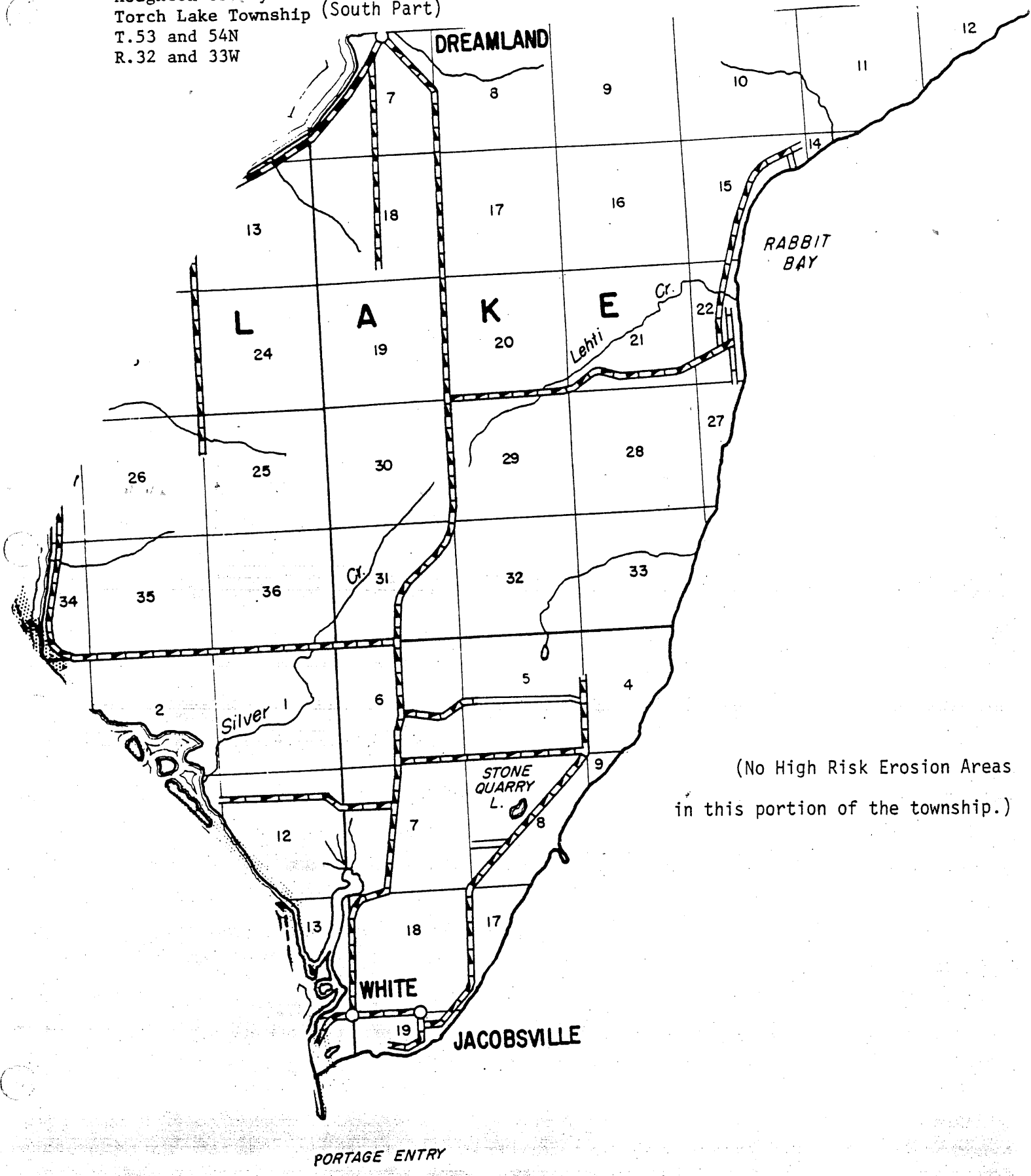
Houghton County
Torch Lake Township (North Part)
T. 54 and 55 N R.31 and 32W



 WIDE SHADED BAND
DEMARKS HIGH RISK
EROSION AREA

 60-year projected recession distance
30-year projected recession distance

Houghton County
Torch Lake Township (South Part)
T.53 and 54N
R.32 and 33W



(No High Risk Erosion Areas
in this portion of the township.)

Parcels in High Risk Erosion Areas of Torch Lake Township, Houghton County

HREAs identified North to South Date of Designation: August 31, 1983

HREA*	Sequence No.	Parcel Identification Number	Rate (feet/year)	30 yr PRD*	60 yr PRD*
A1	1	31-014-270-018-00 Little Traverse Bay	1.5	45	90
A2	2	31-014-270-018-00	3.1	90	185
A3	3	31-014-270-018-00	1.3	35	80

HREA* - Some parcels may be in multiple HREAs due to their large size.

30 yr PRD* is the Projected Recession Distance (feet) landward from the Erosion Hazard Line for readily moveable structures including those structures 3,500 square feet or less and built on a basement, crawlspace or pilings. Additional restrictions may apply per Administrative Rules 281.21-22.

60 yr PRD* is the Projected Recession Distance (feet) landward from the Erosion Hazard Line for non-readily moveable structures such as large structures and septic systems.

Designation runs with the land including subsequent splits. Absence of a property number does not guarantee the property is located outside of an HREA. Contact the Great Lakes Shorelands Unit, Water Resources Division, DEQ in Lansing or the local DEQ field office for assistance.