

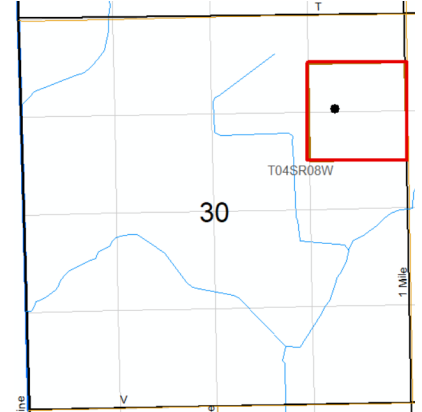
Michigan Department of  
Environment, Great Lakes, and Energy  
Oil, Gas and Minerals Division

PERMIT APPLICATIONS

11/20/2023 THRU 11/24/2023



926                    11/21/2023            5320                    SAVOY ENERGY LP  
PO BOX 1560  
TRAVERSE CITY, MI 49685-1560



Prev Permit:

Well Name: FROST 2-30

Well Type: OIL

Permit Type: Drill

H2S Present? No

Surface Owner: Frost, Lee Roy & Joyce M.

True Vertical Depth: 3750

Target Formation: TRENTON-BLACK RIVER

Deepest Formation: PRAIRIE DU CHIEN

40-Acre Drilling Unit, S/2 NE/4  
NE/4, N/2 SE/4 NE/4, Sec 30

Location:	QT QT QT	Sec	Township	Range	Township Name	County	Feet From Section Line	Feet From DRLG Unit Line
SL:	SWNENE	30	4S	8W	ATHENS	CALHOUN	1270 N 992 E	610 N 331 W
BHL:	SWNENE	30	4S	8W	ATHENS	CALHOUN	1270 N 992 E	610 N 331 W

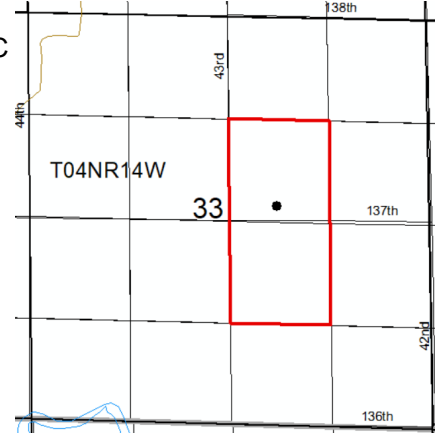
Michigan Department of  
Environment, Great Lakes, and Energy  
Oil, Gas and Minerals Division

PERMIT APPLICATIONS

11/20/2023 THRU 11/24/2023



928                    11/22/2023            8139                    MUSKEGON OPERATING COMPANY LLC  
1425 S. MISSION RD.  
MT. PLEASANT, MI 48858



Prev Permit:

Well Name: KLINGENBERG 1-33

Well Type: OIL

Permit Type: Drill

H2S Present? No

Surface Owner: Norma M. Klingenberg Trust

True Vertical Depth: 1700

Target Formation:

Deepest Formation: TRAVERSE LIMESTONE    80-Acre R303 Drilling Unit,  
SW/4 NE/4, NW/4 SE/4 Sec 33

Location:	QT QT QT	Sec	Township	Range	Township Name	County	Feet From Section Line	Feet From DRLG Unit Line
SL:	SESWNE	33	4N	14W	OVERISEL	ALLEGAN	2489 N 2019 E	1150 N 601 W
BHL:	SESWNE	33	4N	14W	OVERISEL	ALLEGAN	2489 N 2019 E	1150 N 601 W

Michigan Department of  
Environment, Great Lakes, and Energy  
Oil, Gas and Minerals Division

UPDATED PERMITS

11/20/2023 THRU 11/24/2023



Permit Number      Permittee Number      Permittee Name

**PLUGGING INSTRUCTIONS ISSUED:**

61645                      8397                      ALLY EXPLORATION LLC  
4480 MOUNT HOPE ROAD SUITE B  
WILLIAMSBURG, MI 49690

API Well Number: 21-055-62001-00-00

Well Name: STATE PARADISE-FLEMING-MEHS 1-10                      True Vertical Depth: 9675

Plug Inst. Issue Date: 9/29/2023

Location	QT QT QT	Sec	Township	Range	Township Name	County	Feet From Section Line	Feet From DRLG Unit
SL:	SENE SW	10	25N	10W	PARADISE	GRAND TRAVERSE	1468 S 2182 W	1468 S 2182 W
BHL:	SENE SW	10	25N	10W	PARADISE	GRAND TRAVERSE	1468 S 2182 W	1468 S 2182 W

Comment: App to P&A expires on 9/29/2024



Michigan Department of  
Environment, Great Lakes, and Energy  
Oil, Gas and Minerals Division

UPDATED PERMITS

11/20/2023 THRU 11/24/2023



Permit Number      Permittee Number      Permittee Name

**RECORD OF WELL PLUGGING:**

61645      8397      ALLY EXPLORATION LLC  
4480 MOUNT HOPE ROAD SUITE B  
WILLIAMSBURG, MI 49690

API Well Number: 21-055-62001-00-00

Well Name: STATE PARADISE-FLEMING-MEHS 1-10      True Vertical Depth: 9675

Plugging Date: 8/8/2023

Location	QT QT QT	Sec	Township	Range	Township Name	County	Feet From Section Line	Feet From DRLG Unit
SL:	SENE SW	10	25N	10W	PARADISE	GRAND TRAVERSE	1468 S 2182 W	1468 S 2182 W
BHL:	SENE SW	10	25N	10W	PARADISE	GRAND TRAVERSE	1468 S 2182 W	1468 S 2182 W

Michigan Department of Environment, Great Lakes, and Energy  
Oil, Gas and Minerals Division

Updated Permits

11/19/2023 THRU 11/25/2023



Page 3

**TRANSFER OF OWNERSHIP:**

SHEETS FOLLOW THIS PAGE

Transfer Date	Previous Operator	New Operator	Well Name	APINo	WI Permit	County	Township Name	Town Range	Sec
11/20/2023	DELTA OIL CO INC	MUZYL OIL CORP	MUMMEY-JOSEPH 2-24	21101349560000	34956	MANISTEE	ONEKAMA	23N/16W	24
11/20/2023	DELTA OIL CO INC	MUZYL OIL CORP	DALTON BLANCHARD ET AL D1-31	21119453480000	45348	MONTMORENCY	BRILEY	31N/2E	31
11/20/2023	DELTA OIL CO INC	MUZYL OIL CORP	STATE BRILEY C3-19	21119453650000	45365	MONTMORENCY	BRILEY	31N/2E	19
11/20/2023	DELTA OIL CO INC	MUZYL OIL CORP	STATE BRILEY A4-29	21119453660000	45366	MONTMORENCY	BRILEY	31N/2E	29
11/20/2023	DELTA OIL CO INC	MUZYL OIL CORP	STATE BRILEY A3-36	21119453800000	45380	MONTMORENCY	BRILEY	30N/2E	36
11/20/2023	DELTA OIL CO INC	MUZYL OIL CORP	STATE BRILEY D3-36	21119453820000	45382	MONTMORENCY	BRILEY	30N/2E	36
11/20/2023	DELTA OIL CO INC	MUZYL OIL CORP	STATE ALBERT B1-2	21119453830000	45383	MONTMORENCY	ALBERT	29N/2E	2
11/20/2023	DELTA OIL CO INC	MUZYL OIL CORP	ROSEN TRUST ET AL C3-32	21119454020000	45402	MONTMORENCY	BRILEY	31N/2E	32
11/20/2023	DELTA OIL CO INC	MUZYL OIL CORP	STATE BRILEY D2-28	21119454700000	45470	MONTMORENCY	BRILEY	31N/2E	28
11/20/2023	DELTA OIL CO INC	MUZYL OIL CORP	STATE VIENNA C2-36	21119454710000	45471	MONTMORENCY	VIENNA	31N/1E	36
11/20/2023	DELTA OIL CO INC	MUZYL OIL CORP	STATE ALBERT A2-1	21119455980000	45598	MONTMORENCY	ALBERT	29N/2E	1
11/20/2023	DELTA OIL CO INC	MUZYL OIL CORP	STATE AVERY C4-31	21119455990000	45599	MONTMORENCY	AVERY	30N/3E	31
11/20/2023	DELTA OIL CO INC	MUZYL OIL CORP	STATE AVERY C2-32	21119456000000	45600	MONTMORENCY	AVERY	30N/3E	32
11/20/2023	DELTA OIL CO INC	MUZYL OIL CORP	STATE AVERY D1-32	21119456010000	45601	MONTMORENCY	AVERY	30N/3E	32
11/20/2023	DELTA OIL CO INC	MUZYL OIL CORP	STATE BRILEY D2-35	21119456020000	45602	MONTMORENCY	BRILEY	30N/2E	35
11/20/2023	DELTA OIL CO INC	MUZYL OIL CORP	STATE AVERY D2-30	21119456030000	45603	MONTMORENCY	AVERY	30N/3E	30
11/20/2023	DELTA OIL CO INC	MUZYL OIL CORP	STATE AVERY A4-31	21119456040000	45604	MONTMORENCY	AVERY	30N/3E	31
11/20/2023	DELTA OIL CO INC	MUZYL OIL CORP	STATE AVERY B2-30	21119456050000	45605	MONTMORENCY	AVERY	30N/3E	30
11/20/2023	DELTA OIL CO INC	MUZYL OIL CORP	STATE AVERY D2-31 SWD	21119456120000	45612	MONTMORENCY	AVERY	30N/3E	31
11/20/2023	DELTA OIL CO INC	MUZYL OIL CORP	STATE BRILEY D4-35	21119456130000	45613	MONTMORENCY	BRILEY	30N/2E	35
11/20/2023	DELTA OIL CO INC	MUZYL OIL CORP	STATE AVERY D2-31	21119456140000	45614	MONTMORENCY	AVERY	30N/3E	31
11/20/2023	DELTA OIL CO INC	MUZYL OIL CORP	STATE BRILEY C3-25	21119456150000	45615	MONTMORENCY	BRILEY	30N/2E	25
11/20/2023	DELTA OIL CO INC	MUZYL OIL CORP	STATE VIENNA C2-13	21119456160000	45616	MONTMORENCY	VIENNA	31N/1E	13
11/20/2023	DELTA OIL CO INC	MUZYL OIL CORP	STATE VIENNA C2-13 SWD	21119456250000	45625	MONTMORENCY	VIENNA	31N/1E	13
11/20/2023	DELTA OIL CO INC	MUZYL OIL CORP	ROSEN TRUST C4-31	21119456260000	45626	MONTMORENCY	BRILEY	31N/2E	31
11/20/2023	DELTA OIL CO INC	MUZYL OIL CORP	STATE BRILEY B3-31 SWD	21119456780000	45678	MONTMORENCY	BRILEY	31N/2E	31
11/20/2023	DELTA OIL CO INC	MUZYL OIL CORP	STATE BRILEY C3-31	21119456790000	45679	MONTMORENCY	BRILEY	31N/2E	31
11/20/2023	DELTA OIL CO INC	MUZYL OIL CORP	STATE BRILEY D1-29	21119456800000	45680	MONTMORENCY	BRILEY	31N/2E	29
11/20/2023	DELTA OIL CO INC	MUZYL OIL CORP	STATE VIENNA D4-36	21119456810000	45681	MONTMORENCY	VIENNA	31N/1E	36
11/20/2023	DELTA OIL CO INC	MUZYL OIL CORP	STATE BRILEY A1-32	21119456820000	45682	MONTMORENCY	BRILEY	31N/2E	32
11/20/2023	DELTA OIL CO INC	MUZYL OIL CORP	STATE BRILEY D1-32	21119456840000	45684	MONTMORENCY	BRILEY	31N/2E	32
11/20/2023	DELTA OIL CO INC	MUZYL OIL CORP	STATE BRILEY B2-31	21119456850000	45685	MONTMORENCY	BRILEY	31N/2E	31
11/20/2023	DELTA OIL CO INC	MUZYL OIL CORP	STATE BRILEY A1-19	21119456950000	45695	MONTMORENCY	BRILEY	31N/2E	19
11/20/2023	DELTA OIL CO INC	MUZYL OIL CORP	STATE VIENNA A2-23	21119456960000	45696	MONTMORENCY	VIENNA	31N/1E	23
11/20/2023	DELTA OIL CO INC	MUZYL OIL CORP	STATE VIENNA B4-23	21119456980000	45698	MONTMORENCY	VIENNA	31N/1E	23
11/20/2023	DELTA OIL CO INC	MUZYL OIL CORP	STATE VIENNA B4-24	21119456990000	45699	MONTMORENCY	VIENNA	31N/1E	24
11/20/2023	DELTA OIL CO INC	MUZYL OIL CORP	STATE VIENNA C3-24	21119457000000	45700	MONTMORENCY	VIENNA	31N/1E	24
11/20/2023	DELTA OIL CO INC	MUZYL OIL CORP	STATE VIENNA D2-24	21119457010000	45701	MONTMORENCY	VIENNA	31N/1E	24
11/20/2023	DELTA OIL CO INC	MUZYL OIL CORP	STATE BRILEY C1-18	21119459420000	45942	MONTMORENCY	BRILEY	31N/2E	18
11/20/2023	DELTA OIL CO INC	MUZYL OIL CORP	STATE BRILEY A4-20	21119459830000	45983	MONTMORENCY	BRILEY	31N/2E	20
11/20/2023	DELTA OIL CO INC	MUZYL OIL CORP	STATE BRILEY B3-20	21119459840000	45984	MONTMORENCY	BRILEY	31N/2E	20
11/20/2023	DELTA OIL CO INC	MUZYL OIL CORP	STATE VIENNA B4-25	21119459850000	45985	MONTMORENCY	VIENNA	31N/1E	25
11/20/2023	DELTA OIL CO INC	MUZYL OIL CORP	STATE BRILEY B3-29	21119459860000	45986	MONTMORENCY	BRILEY	31N/2E	29
11/20/2023	DELTA OIL CO INC	MUZYL OIL CORP	STATE BRILEY C2-30	21119459870000	45987	MONTMORENCY	BRILEY	31N/2E	30
11/20/2023	DELTA OIL CO INC	MUZYL OIL CORP	STATE BRILEY B1-29	21119459880000	45988	MONTMORENCY	BRILEY	31N/2E	29
11/20/2023	DELTA OIL CO INC	MUZYL OIL CORP	STATE VIENNA C3-25	21119459890000	45989	MONTMORENCY	VIENNA	31N/1E	25
11/20/2023	DELTA OIL CO INC	MUZYL OIL CORP	STATE BRILEY B3-30	21119459900000	45990	MONTMORENCY	BRILEY	31N/2E	30
11/20/2023	DELTA OIL CO INC	MUZYL OIL CORP	DAVIS C2-13	21119460130000	46013	MONTMORENCY	BRILEY	30N/2E	13
11/20/2023	DELTA OIL CO INC	MUZYL OIL CORP	DAVIS D1-13	21119460140000	46014	MONTMORENCY	BRILEY	30N/2E	13
11/20/2023	DELTA OIL CO INC	MUZYL OIL CORP	PAUL B4-15	21119460150000	46015	MONTMORENCY	BRILEY	30N/2E	15
11/20/2023	DELTA OIL CO INC	MUZYL OIL CORP	PAUL 1 SWD	21119460160000	46016	MONTMORENCY	BRILEY	30N/2E	15
11/20/2023	DELTA OIL CO INC	MUZYL OIL CORP	BRILEY B3-30 SWD	21119460370000	46037	MONTMORENCY	BRILEY	31N/2E	30
11/20/2023	DELTA OIL CO INC	MUZYL OIL CORP	STATE BRILEY C1-31	21119460570000	46057	MONTMORENCY	BRILEY	31N/2E	31
11/20/2023	DELTA OIL CO INC	MUZYL OIL CORP	RUNGE ET AL B4-32	21119461130000	46113	MONTMORENCY	BRILEY	31N/2E	32
11/20/2023	DELTA OIL CO INC	MUZYL OIL CORP	ENGLEHART A4-13	21119464020000	46402	MONTMORENCY	BRILEY	30N/2E	13
11/20/2023	DELTA OIL CO INC	MUZYL OIL CORP	LAFLAMME C4-14	21119464550000	46455	MONTMORENCY	BRILEY	30N/2E	14
11/20/2023	DELTA OIL CO INC	MUZYL OIL CORP	GARVER B2-14	21119464560000	46456	MONTMORENCY	BRILEY	30N/2E	14
11/20/2023	DELTA OIL CO INC	MUZYL OIL CORP	ATLANTA COMMUNITY SCHOOLS B2-13	21119464610000	46461	MONTMORENCY	BRILEY	30N/2E	13
11/20/2023	DELTA OIL CO INC	MUZYL OIL CORP	VACATION LAND DEVELOPMENT D2-14	21119464620000	46462	MONTMORENCY	BRILEY	30N/2E	14
11/20/2023	DELTA OIL CO INC	MUZYL OIL CORP	VACATION LAND DEVELOPMENT D2-14 HD2	21119464620100	46462	MONTMORENCY	BRILEY	30N/2E	14
11/20/2023	DELTA OIL CO INC	MUZYL OIL CORP	VACATION LAND DEVELOPMENT D2-14 HD1	21119464620200	46462	MONTMORENCY	BRILEY	30N/2E	14

Transfer Date	PreviousOperator	NewOperator	WellName	APINo	WIPermit	County	TownshipName	TownRange	Sec
11/20/2023	DELTA OIL CO INC	MUZYL OIL CORP	VACATION LAND DEVELOPMENT D2-14 SUMP	21119464620300	46462	MONTMORENCY	BRILEY	30N/2E	14
11/20/2023	DELTA OIL CO INC	MUZYL OIL CORP	BAKER D4-16	21119464670000	46467	MONTMORENCY	BRILEY	30N/2E	16
11/20/2023	DELTA OIL CO INC	MUZYL OIL CORP	DALPIZZOL A2-23	21119464730000	46473	MONTMORENCY	BRILEY	30N/2E	23
11/20/2023	DELTA OIL CO INC	MUZYL OIL CORP	BAKER C1-15	21119465080000	46508	MONTMORENCY	BRILEY	30N/2E	15
11/20/2023	DELTA OIL CO INC	MUZYL OIL CORP	KENT A3-15	21119465160000	46516	MONTMORENCY	BRILEY	30N/2E	15
11/20/2023	DELTA OIL CO INC	MUZYL OIL CORP	RUNGE, ET AL D4-32	21119465280000	46528	MONTMORENCY	BRILEY	31N/2E	32
11/20/2023	DELTA OIL CO INC	MUZYL OIL CORP	STATE VIENNA D4-13	21119467960000	46796	MONTMORENCY	VIENNA	31N/1E	13
11/20/2023	DELTA OIL CO INC	MUZYL OIL CORP	STATE VIENNA A3-13	21119467970000	46797	MONTMORENCY	VIENNA	31N/1E	13
11/20/2023	DELTA OIL CO INC	MUZYL OIL CORP	STATE VIENNA D3-14	21119469200000	46920	MONTMORENCY	VIENNA	31N/1E	14
11/20/2023	DELTA OIL CO INC	MUZYL OIL CORP	STATE BRILEY D3-20	21119473300000	47330	MONTMORENCY	BRILEY	31N/2E	20
11/20/2023	DELTA OIL CO INC	MUZYL OIL CORP	STATE BRILEY C4-29	21119473310000	47331	MONTMORENCY	BRILEY	31N/2E	29
11/20/2023	DELTA OIL CO INC	MUZYL OIL CORP	STATE VIENNA B2-13	21119477650000	47765	MONTMORENCY	VIENNA	31N/1E	13
11/20/2023	DELTA OIL CO INC	MUZYL OIL CORP	STATE VIENNA A1-13	21119477700000	47770	MONTMORENCY	VIENNA	31N/1E	13
11/20/2023	DELTA OIL CO INC	MUZYL OIL CORP	STATE VIENNA D4-12	21119477710000	47771	MONTMORENCY	VIENNA	31N/1E	12
11/20/2023	DELTA OIL CO INC	MUZYL OIL CORP	BLESS A1-24	21119478620000	47862	MONTMORENCY	VIENNA	31N/1E	24
11/20/2023	DELTA OIL CO INC	MUZYL OIL CORP	CUMPER A1-31	21119480150000	48015	MONTMORENCY	AVERY	30N/3E	31
11/20/2023	DELTA OIL CO INC	MUZYL OIL CORP	BLESS, ET UX A2-24	21119481230000	48123	MONTMORENCY	VIENNA	31N/1E	24
11/20/2023	DELTA OIL CO INC	MUZYL OIL CORP	DOWNS D2-19	21119482320000	48232	MONTMORENCY	AVERY	30N/3E	19
11/20/2023	DELTA OIL CO INC	MUZYL OIL CORP	WASEK A3-25	21119482330000	48233	MONTMORENCY	BRILEY	30N/2E	25
11/20/2023	DELTA OIL CO INC	MUZYL OIL CORP	WOLTER A3-24	21119482340000	48234	MONTMORENCY	BRILEY	30N/2E	24
11/20/2023	DELTA OIL CO INC	MUZYL OIL CORP	STIMSON B4-24	21119482350000	48235	MONTMORENCY	BRILEY	30N/2E	24
11/20/2023	DELTA OIL CO INC	MUZYL OIL CORP	STATE AVERY C3-19	21119490690000	49069	MONTMORENCY	AVERY	30N/3E	19
11/20/2023	DELTA OIL CO INC	MUZYL OIL CORP	STATE AVERY C4-19	21119490700000	49070	MONTMORENCY	AVERY	30N/3E	19
11/20/2023	DELTA OIL CO INC	MUZYL OIL CORP	U S A BRILEY B4-36	21119490780000	49078	MONTMORENCY	BRILEY	30N/2E	36
11/20/2023	DELTA OIL CO INC	MUZYL OIL CORP	CREECH C3-24	21119492160000	49216	MONTMORENCY	BRILEY	30N/2E	24
11/20/2023	DELTA OIL CO INC	MUZYL OIL CORP	CADY D3-33	21119496000000	49600	MONTMORENCY	BRILEY	31N/2E	33
11/20/2023	DELTA OIL CO INC	MUZYL OIL CORP	VALENTINE D4-33	21119496010000	49601	MONTMORENCY	BRILEY	31N/2E	33
11/20/2023	DELTA OIL CO INC	MUZYL OIL CORP	STEVENS MINERAL CORPORATION A4-33	21119496020000	49602	MONTMORENCY	BRILEY	31N/2E	33
11/20/2023	DELTA OIL CO INC	MUZYL OIL CORP	TUBS ET AL B3-33	21119496030000	49603	MONTMORENCY	BRILEY	31N/2E	33
11/20/2023	DELTA OIL CO INC	MUZYL OIL CORP	STUEBING & WEAVER C1-33	21119496040000	49604	MONTMORENCY	BRILEY	31N/2E	33
11/20/2023	DELTA OIL CO INC	MUZYL OIL CORP	LICHT D2-33	21119496050000	49605	MONTMORENCY	BRILEY	31N/2E	33
11/20/2023	DELTA OIL CO INC	MUZYL OIL CORP	STEVENS B4-17	21119496460000	49646	MONTMORENCY	BRILEY	31N/2E	17
11/20/2023	DELTA OIL CO INC	MUZYL OIL CORP	STEVENS MINERAL CORPORATION D4-8	21119496470000	49647	MONTMORENCY	BRILEY	31N/2E	8
11/20/2023	DELTA OIL CO INC	MUZYL OIL CORP	MANIER D3-36	21119497350000	49735	MONTMORENCY	VIENNA	31N/1E	36
11/20/2023	DELTA OIL CO INC	MUZYL OIL CORP	RAY D3-35	21119497370000	49737	MONTMORENCY	VIENNA	31N/1E	35
11/20/2023	DELTA OIL CO INC	MUZYL OIL CORP	STATE BRILEY C1-36	21119498140000	49814	MONTMORENCY	BRILEY	30N/2E	36
11/20/2023	DELTA OIL CO INC	MUZYL OIL CORP	STATE AVERY D4-32	21119498150000	49815	MONTMORENCY	AVERY	30N/3E	32
11/20/2023	DELTA OIL CO INC	MUZYL OIL CORP	STATE VIENNA B4-36	21119498770000	49877	MONTMORENCY	VIENNA	31N/1E	36
11/20/2023	DELTA OIL CO INC	MUZYL OIL CORP	STATE BRILEY B4-31	21119498780000	49878	MONTMORENCY	BRILEY	31N/2E	31
11/20/2023	DELTA OIL CO INC	MUZYL OIL CORP	STATE BRILEY B2-17	21119498830000	49883	MONTMORENCY	BRILEY	31N/2E	17
11/20/2023	DELTA OIL CO INC	MUZYL OIL CORP	STATE BRILEY C1-17	21119498840000	49884	MONTMORENCY	BRILEY	31N/2E	17
11/20/2023	DELTA OIL CO INC	MUZYL OIL CORP	STATE BRILEY B4-18	21119498850000	49885	MONTMORENCY	BRILEY	31N/2E	18
11/20/2023	DELTA OIL CO INC	MUZYL OIL CORP	STATE VIENNA C2-25	21119498950000	49895	MONTMORENCY	VIENNA	31N/1E	25
11/20/2023	DELTA OIL CO INC	MUZYL OIL CORP	STATE BRILEY D3-30	21119498960000	49896	MONTMORENCY	BRILEY	31N/2E	30
11/20/2023	DELTA OIL CO INC	MUZYL OIL CORP	TUBS ET AL B2-33	21119499180000	49918	MONTMORENCY	BRILEY	31N/2E	33
11/20/2023	DELTA OIL CO INC	MUZYL OIL CORP	STATE BRILEY B1-20	21119499190000	49919	MONTMORENCY	BRILEY	31N/2E	20
11/20/2023	DELTA OIL CO INC	MUZYL OIL CORP	STATE BRILEY A2-30	21119499200000	49920	MONTMORENCY	BRILEY	31N/2E	30
11/20/2023	DELTA OIL CO INC	MUZYL OIL CORP	STATE BRILEY C4-18	21119499730000	49973	MONTMORENCY	BRILEY	31N/2E	18
11/20/2023	DELTA OIL CO INC	MUZYL OIL CORP	RAY D1-36	21119501760000	50176	MONTMORENCY	VIENNA	31N/1E	36
11/20/2023	DELTA OIL CO INC	MUZYL OIL CORP	BRILEY C1-17 SWD	21119502200000	50220	MONTMORENCY	BRILEY	31N/2E	17
11/20/2023	DELTA OIL CO INC	MUZYL OIL CORP	PPP HUNT CLUB A1-16	21119502400000	50240	MONTMORENCY	BRILEY	31N/2E	16
11/20/2023	DELTA OIL CO INC	MUZYL OIL CORP	STATE BRILEY D4-18	21119502410000	50241	MONTMORENCY	BRILEY	31N/2E	18
11/20/2023	DELTA OIL CO INC	MUZYL OIL CORP	STEVENS MINERAL CORPORATION D3-17	21119503610000	50361	MONTMORENCY	BRILEY	31N/2E	17
11/20/2023	DELTA OIL CO INC	MUZYL OIL CORP	STEVENS MINERAL CORPORATION A1-34	21119504470000	50447	MONTMORENCY	BRILEY	31N/2E	34
11/20/2023	DELTA OIL CO INC	MUZYL OIL CORP	STATE BRILEY & ROSEN TRUST C4-33	21119507680000	50768	MONTMORENCY	BRILEY	31N/2E	33
11/20/2023	DELTA OIL CO INC	MUZYL OIL CORP	STATE VIENNA B4-13	21119508620000	50862	MONTMORENCY	VIENNA	31N/1E	13
11/20/2023	DELTA OIL CO INC	MUZYL OIL CORP	STATE VIENNA C4-14	21119508630000	50863	MONTMORENCY	VIENNA	31N/1E	14
11/20/2023	DELTA OIL CO INC	MUZYL OIL CORP	STATE VIENNA A3-24	21119508640000	50864	MONTMORENCY	VIENNA	31N/1E	24
11/20/2023	DELTA OIL CO INC	MUZYL OIL CORP	STATE VIENNA C3-13	21119516070000	51607	MONTMORENCY	VIENNA	31N/1E	13
11/20/2023	DELTA OIL CO INC	MUZYL OIL CORP	STATE VIENNA & SANDERS D2-13	21119516080000	51608	MONTMORENCY	VIENNA	31N/1E	13
11/20/2023	DELTA OIL CO INC	MUZYL OIL CORP	STATE BRILEY C4-20	21119516420000	51642	MONTMORENCY	BRILEY	31N/2E	20

Transfer Date	Previous Operator	New Operator	Well Name	APINo	WIPermit	County	Township Name	Town Range	Sec
11/20/2023	DELTA OIL CO INC	MUZYL OIL CORP	STATE BRILEY D3-19	21119516440000	51644	MONTMORENCY	BRILEY	31N/2E	19
11/20/2023	DELTA OIL CO INC	MUZYL OIL CORP	STATE VIENNA D2-25	21119516480000	51648	MONTMORENCY	VIENNA	31N/1E	25
11/20/2023	DELTA OIL CO INC	MUZYL OIL CORP	STATE BRILEY B1-30	21119516500000	51650	MONTMORENCY	BRILEY	31N/2E	30
11/20/2023	DELTA OIL CO INC	MUZYL OIL CORP	STATE BRILEY D3-29	21119516510000	51651	MONTMORENCY	BRILEY	31N/2E	29
11/20/2023	DELTA OIL CO INC	MUZYL OIL CORP	STATE BRILEY B2-29	21119516520000	51652	MONTMORENCY	BRILEY	31N/2E	29
11/20/2023	DELTA OIL CO INC	MUZYL OIL CORP	STATE BRILEY A3-29	21119516530000	51653	MONTMORENCY	BRILEY	31N/2E	29
11/20/2023	DELTA OIL CO INC	MUZYL OIL CORP	STATE VIENNA B3-36	21119516620000	51662	MONTMORENCY	VIENNA	31N/1E	36
11/20/2023	DELTA OIL CO INC	MUZYL OIL CORP	STATE BRILEY ET AL A3-18	21119516630000	51663	MONTMORENCY	BRILEY	31N/2E	18
11/20/2023	DELTA OIL CO INC	MUZYL OIL CORP	STATE BRILEY ET AL A4-18	21119516640000	51664	MONTMORENCY	BRILEY	31N/2E	18
11/20/2023	DELTA OIL CO INC	MUZYL OIL CORP	STATE AVERY C1-30	21119516930000	51693	MONTMORENCY	AVERY	30N/3E	30
11/20/2023	DELTA OIL CO INC	MUZYL OIL CORP	STATE ALBERT B2-2	21119516940000	51694	MONTMORENCY	ALBERT	29N/2E	2
11/20/2023	DELTA OIL CO INC	MUZYL OIL CORP	STATE BRILEY C3-35	21119516950000	51695	MONTMORENCY	BRILEY	30N/2E	35
11/20/2023	DELTA OIL CO INC	MUZYL OIL CORP	STATE AVERY B3-31	21119516960000	51696	MONTMORENCY	AVERY	30N/3E	31
11/20/2023	DELTA OIL CO INC	MUZYL OIL CORP	CUMPER C3-30	21119516970000	51697	MONTMORENCY	AVERY	30N/3E	30
11/20/2023	DELTA OIL CO INC	MUZYL OIL CORP	STATE BRILEY B2-32	21119517180000	51718	MONTMORENCY	BRILEY	31N/2E	32
11/20/2023	DELTA OIL CO INC	MUZYL OIL CORP	STATE BRILEY D2-32	21119517190000	51719	MONTMORENCY	BRILEY	31N/2E	32
11/20/2023	DELTA OIL CO INC	MUZYL OIL CORP	STATE BRILEY ET AL A3-17	21119517590000	51759	MONTMORENCY	BRILEY	31N/2E	17
11/20/2023	DELTA OIL CO INC	MUZYL OIL CORP	STATE AVERY D3-31	21119517660000	51766	MONTMORENCY	AVERY	30N/3E	31
11/20/2023	DELTA OIL CO INC	MUZYL OIL CORP	STEVENS MINERAL CORP & DAIL B3-17	21119517740000	51774	MONTMORENCY	BRILEY	31N/2E	17
11/20/2023	DELTA OIL CO INC	MUZYL OIL CORP	STATE BRILEY D3-31	21119518780000	51878	MONTMORENCY	BRILEY	31N/2E	31
11/20/2023	DELTA OIL CO INC	MUZYL OIL CORP	STATE BRILEY A1-31	21119520530000	52053	MONTMORENCY	BRILEY	31N/2E	31
11/20/2023	DELTA OIL CO INC	MUZYL OIL CORP	STATE VIENNA & RAY D4-35	21119520540000	52054	MONTMORENCY	VIENNA	31N/1E	35
11/20/2023	DELTA OIL CO INC	MUZYL OIL CORP	STEVENS C4-13	21119526350000	52635	MONTMORENCY	BRILEY	30N/2E	13
11/20/2023	DELTA OIL CO INC	MUZYL OIL CORP	BAKER A1-22	21119526360000	52636	MONTMORENCY	BRILEY	30N/2E	22
11/20/2023	DELTA OIL CO INC	MUZYL OIL CORP	MONROE D4-14	21119527070000	52707	MONTMORENCY	BRILEY	30N/2E	14
11/20/2023	DELTA OIL CO INC	MUZYL OIL CORP	KROGEL A2-14	21119528100000	52810	MONTMORENCY	BRILEY	30N/2E	14
11/20/2023	DELTA OIL CO INC	MUZYL OIL CORP	HEPPNER D2-25	21119533920000	53392	MONTMORENCY	BRILEY	30N/2E	25
11/20/2023	DELTA OIL CO INC	MUZYL OIL CORP	HEPPNER D1-25	21119533930000	53393	MONTMORENCY	BRILEY	30N/2E	25
11/20/2023	DELTA OIL CO INC	MUZYL OIL CORP	HEPPNER B1-25	21119533940000	53394	MONTMORENCY	BRILEY	30N/2E	25
11/20/2023	DELTA OIL CO INC	MUZYL OIL CORP	STATE BRILEY & HALL, ET AL A2-8	21119535460000	53546	MONTMORENCY	BRILEY	31N/2E	8
11/20/2023	DELTA OIL CO INC	MUZYL OIL CORP	STATE ALBERT B3-1	21119536150000	53615	MONTMORENCY	ALBERT	29N/2E	1
11/20/2023	DELTA OIL CO INC	MUZYL OIL CORP	STATE BRILEY A3-19	21119536160000	53616	MONTMORENCY	BRILEY	31N/2E	19
11/20/2023	DELTA OIL CO INC	MUZYL OIL CORP	STATE ALBERT A4-1	21119536170000	53617	MONTMORENCY	ALBERT	29N/2E	1
11/20/2023	DELTA OIL CO INC	MUZYL OIL CORP	STATE AVERY & DOTY D2-7	21119536380000	53638	MONTMORENCY	AVERY	30N/3E	7
11/20/2023	DELTA OIL CO INC	MUZYL OIL CORP	STATE ALBERT B3-2	21119536400000	53640	MONTMORENCY	ALBERT	29N/2E	2
11/20/2023	DELTA OIL CO INC	MUZYL OIL CORP	U S A BRILEY C3-36	21119536610000	53661	MONTMORENCY	BRILEY	30N/2E	36
11/20/2023	DELTA OIL CO INC	MUZYL OIL CORP	STATE BRILEY A1-35	21119537780000	53778	MONTMORENCY	BRILEY	30N/2E	35
11/20/2023	DELTA OIL CO INC	MUZYL OIL CORP	STATE BRILEY A4-35	21119537790000	53779	MONTMORENCY	BRILEY	30N/2E	35
11/20/2023	DELTA OIL CO INC	MUZYL OIL CORP	STATE BRILEY & HUBBLICK B2-34	21119547020000	54702	MONTMORENCY	BRILEY	31N/2E	34
11/20/2023	DELTA OIL CO INC	MUZYL OIL CORP	MABIE C3-15	21119547510000	54751	MONTMORENCY	BRILEY	30N/2E	15
11/20/2023	DELTA OIL CO INC	MUZYL OIL CORP	KONEITZKO D4-12	21119548260000	54826	MONTMORENCY	BRILEY	30N/2E	12
11/20/2023	DELTA OIL CO INC	MUZYL OIL CORP	STATE BRILEY C1-20	21119555590000	55559	MONTMORENCY	BRILEY	31N/2E	20
11/20/2023	DELTA OIL CO INC	MUZYL OIL CORP	HOFFMEYER C1-19	21119559580000	55958	MONTMORENCY	AVERY	30N/3E	19
11/20/2023	DELTA OIL CO INC	MUZYL OIL CORP	STATE BRILEY A2-20	21119559600000	55960	MONTMORENCY	BRILEY	31N/2E	20
11/20/2023	DELTA OIL CO INC	MUZYL OIL CORP	STATE BRILEY A3-31	21119559610000	55961	MONTMORENCY	BRILEY	31N/2E	31
11/20/2023	DELTA OIL CO INC	MUZYL OIL CORP	STATE AVERY A1-30	21119560200000	56020	MONTMORENCY	AVERY	30N/3E	30
11/20/2023	DELTA OIL CO INC	MUZYL OIL CORP	U S A BRILEY B1-36	21119560330000	56033	MONTMORENCY	BRILEY	30N/2E	36
11/20/2023	DELTA OIL CO INC	MUZYL OIL CORP	BARTHOLOMEW C2-23	21119560370000	56037	MONTMORENCY	BRILEY	30N/2E	23
11/20/2023	DELTA OIL CO INC	MUZYL OIL CORP	ANDROL & CAMPBELL B2-19	21119560460000	56046	MONTMORENCY	BRILEY	31N/2E	19
11/20/2023	DELTA OIL CO INC	MUZYL OIL CORP	STATE BRILEY C1-28	21119560470000	56047	MONTMORENCY	BRILEY	31N/2E	28
11/20/2023	DELTA OIL CO INC	MUZYL OIL CORP	STATE BRILEY C4-30	21119560540000	56054	MONTMORENCY	BRILEY	31N/2E	30
11/20/2023	DELTA OIL CO INC	MUZYL OIL CORP	STATE VIENNA D1-24	21119560820000	56082	MONTMORENCY	VIENNA	31N/1E	24
11/20/2023	DELTA OIL CO INC	MUZYL OIL CORP	CONLIN 15-20	2135464270000	46427	OSCODA	ELMER	28N/2E	20
11/20/2023	DELTA OIL CO INC	MUZYL OIL CORP	U S A ELMER A2-25	2135477380000	47738	OSCODA	ELMER	28N/2E	25
11/20/2023	DELTA OIL CO INC	MUZYL OIL CORP	STATE ELMER A3-22	2135477400000	47740	OSCODA	ELMER	28N/2E	22
11/20/2023	DELTA OIL CO INC	MUZYL OIL CORP	STATE ELMER C2-16	2135478880000	47888	OSCODA	ELMER	28N/2E	16
11/20/2023	DELTA OIL CO INC	MUZYL OIL CORP	STATE ELMER D4-17	2135481810000	48181	OSCODA	ELMER	28N/2E	17
11/20/2023	DELTA OIL CO INC	MUZYL OIL CORP	STATE ELMER D2-22	2135484810000	48481	OSCODA	ELMER	28N/2E	22
11/20/2023	DELTA OIL CO INC	MUZYL OIL CORP	STATE ELMER D4-22	2135484820000	48482	OSCODA	ELMER	28N/2E	22
11/20/2023	DELTA OIL CO INC	MUZYL OIL CORP	STATE ELMER B2-16	2135485820000	48582	OSCODA	ELMER	28N/2E	16
11/20/2023	DELTA OIL CO INC	MUZYL OIL CORP	STATE ELMER C2-21	2135485920000	48592	OSCODA	ELMER	28N/2E	21



Transfer Date	Previous Operator	New Operator	Well Name	API No	WI Permit	County	Township Name	Town Range	Sec
11/20/2023	DELTA OIL CO INC	MUZYL OIL CORP	STATE ELMER A3-21	21135485930000	48593	OSCODA	ELMER	28N/2E	21
11/20/2023	DELTA OIL CO INC	MUZYL OIL CORP	STATE ELMER A1-22	21135485950000	48595	OSCODA	ELMER	28N/2E	22
11/20/2023	DELTA OIL CO INC	MUZYL OIL CORP	STATE ELMER B1-27	21135492320000	49232	OSCODA	ELMER	28N/2E	27
11/20/2023	DELTA OIL CO INC	MUZYL OIL CORP	STATE ELMER C4-27	21135492340000	49234	OSCODA	ELMER	28N/2E	27
11/20/2023	DELTA OIL CO INC	MUZYL OIL CORP	STATE ELMER B3-27	21135492350000	49235	OSCODA	ELMER	28N/2E	27
11/20/2023	DELTA OIL CO INC	MUZYL OIL CORP	STATE ELMER C4-21	21135492750000	49275	OSCODA	ELMER	28N/2E	21
11/20/2023	DELTA OIL CO INC	MUZYL OIL CORP	STATE ELMER D1-26	21135492840000	49284	OSCODA	ELMER	28N/2E	26
11/20/2023	DELTA OIL CO INC	MUZYL OIL CORP	STATE ELMER C3-26	21135493130000	49313	OSCODA	ELMER	28N/2E	26
11/20/2023	DELTA OIL CO INC	MUZYL OIL CORP	STATE ELMER B4-34	21135493150000	49315	OSCODA	ELMER	28N/2E	34
11/20/2023	DELTA OIL CO INC	MUZYL OIL CORP	STATE ELMER C4-24	21135493160000	49316	OSCODA	ELMER	28N/2E	24
11/20/2023	DELTA OIL CO INC	MUZYL OIL CORP	STATE ELMER B4-24	21135493170000	49317	OSCODA	ELMER	28N/2E	24
11/20/2023	DELTA OIL CO INC	MUZYL OIL CORP	STATE ELMER A4-25	21135493180000	49318	OSCODA	ELMER	28N/2E	25
11/20/2023	DELTA OIL CO INC	MUZYL OIL CORP	STATE ELMER A1-24	21135493190000	49319	OSCODA	ELMER	28N/2E	24
11/20/2023	DELTA OIL CO INC	MUZYL OIL CORP	STATE ELMER B2-26	21135493220000	49322	OSCODA	ELMER	28N/2E	26
11/20/2023	DELTA OIL CO INC	MUZYL OIL CORP	STATE ELMER A4-26	21135493880000	49388	OSCODA	ELMER	28N/2E	26
11/20/2023	DELTA OIL CO INC	MUZYL OIL CORP	ELMER D1-26 SWD	21135505150000	50515	OSCODA	ELMER	28N/2E	26
11/20/2023	DELTA OIL CO INC	MUZYL OIL CORP	STATE ELMER C3-23	21135505910000	50591	OSCODA	ELMER	28N/2E	23
11/20/2023	DELTA OIL CO INC	MUZYL OIL CORP	STATE ELMER D2-21	21135530260000	53026	OSCODA	ELMER	28N/2E	21
11/20/2023	DELTA OIL CO INC	MUZYL OIL CORP	PUTHUFF E R, ZINN G H, SCHRADER B J 2-23A	21137322760100	32411	OTSEGO	DOVER	31N/2W	23
11/20/2023	DELTA OIL CO INC	MUZYL OIL CORP	MATUSIK C2-21	21137415510000	41551	OTSEGO	DOVER	31N/2W	21
11/20/2023	DELTA OIL CO INC	MUZYL OIL CORP	COVIAK D2-16	21137415520000	41552	OTSEGO	DOVER	31N/2W	16
11/20/2023	DELTA OIL CO INC	MUZYL OIL CORP	SCHRADER C1-23	21137415530000	41553	OTSEGO	DOVER	31N/2W	23
11/20/2023	DELTA OIL CO INC	MUZYL OIL CORP	SCHRADER D2-23	21137415540000	41554	OTSEGO	DOVER	31N/2W	23
11/20/2023	DELTA OIL CO INC	MUZYL OIL CORP	SCHRADER D1-23	21137415550000	41555	OTSEGO	DOVER	31N/2W	23
11/20/2023	DELTA OIL CO INC	MUZYL OIL CORP	SCHRADER A2-23	21137415560000	41556	OTSEGO	DOVER	31N/2W	23
11/20/2023	DELTA OIL CO INC	MUZYL OIL CORP	MORSE A1-22	21137415570000	41557	OTSEGO	DOVER	31N/2W	22
11/20/2023	DELTA OIL CO INC	MUZYL OIL CORP	FORTERRA D4-15	21137416060000	41606	OTSEGO	DOVER	31N/2W	15
11/20/2023	DELTA OIL CO INC	MUZYL OIL CORP	BLANZY B2-22	21137416080000	41608	OTSEGO	DOVER	31N/2W	22
11/20/2023	DELTA OIL CO INC	MUZYL OIL CORP	SCHRADER A1-26	21137416360000	41636	OTSEGO	DOVER	31N/2W	26
11/20/2023	DELTA OIL CO INC	MUZYL OIL CORP	SADDLER A4-21	21137416650000	41665	OTSEGO	DOVER	31N/2W	21
11/20/2023	DELTA OIL CO INC	MUZYL OIL CORP	PALKA A1-34	21137417610100	41860	OTSEGO	DOVER	31N/2W	34
11/20/2023	DELTA OIL CO INC	MUZYL OIL CORP	SCHRADER D3-23	21137421510000	42151	OTSEGO	DOVER	31N/2W	23
11/20/2023	DELTA OIL CO INC	MUZYL OIL CORP	WILLICK C4-27	21137421540000	42154	OTSEGO	DOVER	31N/2W	27
11/20/2023	DELTA OIL CO INC	MUZYL OIL CORP	SCHRADER D4-23	21137421550000	42155	OTSEGO	DOVER	31N/2W	23
11/20/2023	DELTA OIL CO INC	MUZYL OIL CORP	WILLICK D4-27	21137421800000	42180	OTSEGO	DOVER	31N/2W	27
11/20/2023	DELTA OIL CO INC	MUZYL OIL CORP	KNOWLTON C1-24	21137422660000	42266	OTSEGO	DOVER	31N/2W	24
11/20/2023	DELTA OIL CO INC	MUZYL OIL CORP	SCHRADER C3-23	21137422670000	42267	OTSEGO	DOVER	31N/2W	23
11/20/2023	DELTA OIL CO INC	MUZYL OIL CORP	SCHRADER C4-23	21137422680000	42268	OTSEGO	DOVER	31N/2W	23
11/20/2023	DELTA OIL CO INC	MUZYL OIL CORP	KUBACKI B4-26	21137426750000	42675	OTSEGO	DOVER	31N/2W	26
11/20/2023	DELTA OIL CO INC	MUZYL OIL CORP	FORTERRA D4-16	21137432630000	43263	OTSEGO	DOVER	31N/2W	16
11/20/2023	DELTA OIL CO INC	MUZYL OIL CORP	FORTERRA D3-15	21137432710000	43271	OTSEGO	DOVER	31N/2W	15
11/20/2023	DELTA OIL CO INC	MUZYL OIL CORP	FORD B2-21	21137433980000	43398	OTSEGO	DOVER	31N/2W	21
11/20/2023	DELTA OIL CO INC	MUZYL OIL CORP	MORRIS B1-22	21137434160000	43416	OTSEGO	DOVER	31N/2W	22
11/20/2023	DELTA OIL CO INC	MUZYL OIL CORP	SADDLER B4-21	21137435410000	43541	OTSEGO	DOVER	31N/2W	21
11/20/2023	DELTA OIL CO INC	MUZYL OIL CORP	LAWNICHAK B3-33	21137436530000	43653	OTSEGO	DOVER	31N/2W	33
11/20/2023	DELTA OIL CO INC	MUZYL OIL CORP	FORTERRA C4-15	21137437310000	43731	OTSEGO	DOVER	31N/2W	15
11/20/2023	DELTA OIL CO INC	MUZYL OIL CORP	ANCEL C3-16	21137437350000	43735	OTSEGO	DOVER	31N/2W	16
11/20/2023	DELTA OIL CO INC	MUZYL OIL CORP	FORTERRA C2-15	21137437560000	43756	OTSEGO	DOVER	31N/2W	15
11/20/2023	DELTA OIL CO INC	MUZYL OIL CORP	WILSON D4-28 SWD	21137437960000	43796	OTSEGO	DOVER	31N/2W	28
11/20/2023	DELTA OIL CO INC	MUZYL OIL CORP	KUSNERZ D2-27	21137437970000	43797	OTSEGO	DOVER	31N/2W	27
11/20/2023	DELTA OIL CO INC	MUZYL OIL CORP	BOUGHNER D4-29	21137437980000	43798	OTSEGO	DOVER	31N/2W	29
11/20/2023	DELTA OIL CO INC	MUZYL OIL CORP	WILSON D4-28	21137438000000	43800	OTSEGO	DOVER	31N/2W	28
11/20/2023	DELTA OIL CO INC	MUZYL OIL CORP	LAKE D2-28	21137438010000	43801	OTSEGO	DOVER	31N/2W	28
11/20/2023	DELTA OIL CO INC	MUZYL OIL CORP	MYZKIER C1-27	21137438170000	43817	OTSEGO	DOVER	31N/2W	27
11/20/2023	DELTA OIL CO INC	MUZYL OIL CORP	AXFORD C1-11	21137441500000	44150	OTSEGO	DOVER	31N/2W	11
11/20/2023	DELTA OIL CO INC	MUZYL OIL CORP	AXFORD C2-11	21137441510000	44151	OTSEGO	DOVER	31N/2W	11
11/20/2023	DELTA OIL CO INC	MUZYL OIL CORP	BOUGHNER C1-28	21137441540000	44154	OTSEGO	DOVER	31N/2W	28
11/20/2023	DELTA OIL CO INC	MUZYL OIL CORP	AXFORD B4-11	21137441560000	44156	OTSEGO	DOVER	31N/2W	11
11/20/2023	DELTA OIL CO INC	MUZYL OIL CORP	AXFORD C2-10	21137441570000	44157	OTSEGO	DOVER	31N/2W	10
11/20/2023	DELTA OIL CO INC	MUZYL OIL CORP	AXFORD C3-10	21137441580000	44158	OTSEGO	DOVER	31N/2W	10
11/20/2023	DELTA OIL CO INC	MUZYL OIL CORP	AXFORD C4-10	21137441590000	44159	OTSEGO	DOVER	31N/2W	10

Transfer Date	Previous Operator	New Operator	Well Name	API No	WI Permit	County	Township Name	Town Range	Sec
11/20/2023	DELTA OIL CO INC	MUZYL OIL CORP	AXFORD D3-11	21137441600000	44160	OTSEGO	DOVER	31N/2W	11
11/20/2023	DELTA OIL CO INC	MUZYL OIL CORP	AXFORD B3-11	21137441610000	44161	OTSEGO	DOVER	31N/2W	11
11/20/2023	DELTA OIL CO INC	MUZYL OIL CORP	COLLITON B2-15	21137442690000	44269	OTSEGO	DOVER	31N/2W	15
11/20/2023	DELTA OIL CO INC	MUZYL OIL CORP	COLLITON A2-15	21137442700000	44270	OTSEGO	DOVER	31N/2W	15
11/20/2023	DELTA OIL CO INC	MUZYL OIL CORP	COLLITON B1-15	21137442710000	44271	OTSEGO	DOVER	31N/2W	15
11/20/2023	DELTA OIL CO INC	MUZYL OIL CORP	COLLITON A3-15	21137442720000	44272	OTSEGO	DOVER	31N/2W	15
11/20/2023	DELTA OIL CO INC	MUZYL OIL CORP	COVIAK C2-16	21137448790000	44879	OTSEGO	DOVER	31N/2W	16
11/20/2023	DELTA OIL CO INC	MUZYL OIL CORP	FORTERRA C1-15	21137448800000	44880	OTSEGO	DOVER	31N/2W	15
11/20/2023	DELTA OIL CO INC	MUZYL OIL CORP	MATUSIK A3-21	21137449610000	44961	OTSEGO	DOVER	31N/2W	21
11/20/2023	DELTA OIL CO INC	MUZYL OIL CORP	MATUSIK A2-21	21137449620000	44962	OTSEGO	DOVER	31N/2W	21
11/20/2023	DELTA OIL CO INC	MUZYL OIL CORP	FIHRER & DUMFORD B1-14	21137452400000	45240	OTSEGO	DOVER	31N/2W	14
11/20/2023	DELTA OIL CO INC	MUZYL OIL CORP	FIHRER & DUMFORD B2-14	21137452410000	45241	OTSEGO	DOVER	31N/2W	14
11/20/2023	DELTA OIL CO INC	MUZYL OIL CORP	AXFORD B1-10	21137453900000	45390	OTSEGO	DOVER	31N/2W	10
11/20/2023	DELTA OIL CO INC	MUZYL OIL CORP	AXFORD D1-10	21137453910000	45391	OTSEGO	DOVER	31N/2W	10
11/20/2023	DELTA OIL CO INC	MUZYL OIL CORP	AXFORD D3-10	21137453920000	45392	OTSEGO	DOVER	31N/2W	10
11/20/2023	DELTA OIL CO INC	MUZYL OIL CORP	AXFORD B1-11	21137453930000	45393	OTSEGO	DOVER	31N/2W	11
11/20/2023	DELTA OIL CO INC	MUZYL OIL CORP	STATE DOVER A1-14	21137453940000	45394	OTSEGO	DOVER	31N/2W	14
11/20/2023	DELTA OIL CO INC	MUZYL OIL CORP	AXFORD A2-11	21137454140000	45414	OTSEGO	DOVER	31N/2W	11
11/20/2023	DELTA OIL CO INC	MUZYL OIL CORP	AXFORD D2-11	21137454150000	45415	OTSEGO	DOVER	31N/2W	11
11/20/2023	DELTA OIL CO INC	MUZYL OIL CORP	AXFORD B1-12	21137454410000	45441	OTSEGO	DOVER	31N/2W	12
11/20/2023	DELTA OIL CO INC	MUZYL OIL CORP	KUSNERZ D1-27	21137464220000	46422	OTSEGO	DOVER	31N/2W	27
11/20/2023	DELTA OIL CO INC	MUZYL OIL CORP	KROMPOTICH B1-25	21137464450000	46445	OTSEGO	DOVER	31N/2W	25
11/20/2023	DELTA OIL CO INC	MUZYL OIL CORP	BOUGHNER C4-28	21137464460000	46446	OTSEGO	DOVER	31N/2W	28
11/20/2023	DELTA OIL CO INC	MUZYL OIL CORP	CHARLES D1-2	21137468980000	46898	OTSEGO	DOVER	31N/2W	2
11/20/2023	DELTA OIL CO INC	MUZYL OIL CORP	CHARLES D3-2	21137468990000	46899	OTSEGO	DOVER	31N/2W	2
11/20/2023	DELTA OIL CO INC	MUZYL OIL CORP	AXFORD A4-11	21137469010000	46901	OTSEGO	DOVER	31N/2W	11
11/20/2023	DELTA OIL CO INC	MUZYL OIL CORP	LESPERANCE C1-14	21137469020000	46902	OTSEGO	DOVER	31N/2W	14
11/20/2023	DELTA OIL CO INC	MUZYL OIL CORP	AXFORD C4-11	21137469030000	46903	OTSEGO	DOVER	31N/2W	11
11/20/2023	DELTA OIL CO INC	MUZYL OIL CORP	STATE DOVER A2-16	21137470950000	47095	OTSEGO	DOVER	31N/2W	16
11/20/2023	DELTA OIL CO INC	MUZYL OIL CORP	STATE DOVER A3-16	21137471000000	47100	OTSEGO	DOVER	31N/2W	16
11/20/2023	DELTA OIL CO INC	MUZYL OIL CORP	STATE DOVER 1-14	21137475160000	47516	OTSEGO	DOVER	31N/2W	14
11/20/2023	DELTA OIL CO INC	MUZYL OIL CORP	HOWARD C3-35	21137500590000	50059	OTSEGO	CORWITH	32N/2W	35
11/20/2023	DELTA OIL CO INC	MUZYL OIL CORP	HOWARD D3-35	21137500610000	50061	OTSEGO	CORWITH	32N/2W	35
11/20/2023	DELTA OIL CO INC	MUZYL OIL CORP	STATE DOVER C4-3	21137501450000	50145	OTSEGO	DOVER	31N/2W	3
11/20/2023	DELTA OIL CO INC	MUZYL OIL CORP	STATE DOVER B3-3	21137501490000	50149	OTSEGO	DOVER	31N/2W	3
11/20/2023	DELTA OIL CO INC	MUZYL OIL CORP	FERRANTE B3-10	21137502490000	50249	OTSEGO	DOVER	31N/2W	10
11/20/2023	DELTA OIL CO INC	MUZYL OIL CORP	CHARLES A4-2	21137502500000	50250	OTSEGO	DOVER	31N/2W	2
11/20/2023	DELTA OIL CO INC	MUZYL OIL CORP	CHARLES C2-2	21137502530000	50253	OTSEGO	DOVER	31N/2W	2
11/20/2023	DELTA OIL CO INC	MUZYL OIL CORP	CHARLES A2-2	21137502540000	50254	OTSEGO	DOVER	31N/2W	2
11/20/2023	DELTA OIL CO INC	MUZYL OIL CORP	STATE DOVER & GORING A4-23	21137535300000	53530	OTSEGO	DOVER	31N/2W	23
11/20/2023	DELTA OIL CO INC	MUZYL OIL CORP	SCHRADER C4-14	21137535310000	53531	OTSEGO	DOVER	31N/2W	14
11/20/2023	DELTA OIL CO INC	MUZYL OIL CORP	GILLIS B3-32	21137536000000	53600	OTSEGO	DOVER	31N/2W	32
11/20/2023	DELTA OIL CO INC	MUZYL OIL CORP	GILLIS A3-32	21137536220000	53622	OTSEGO	DOVER	31N/2W	32
11/20/2023	DELTA OIL CO INC	MUZYL OIL CORP	JACKSON D4-12	21137537970000	53797	OTSEGO	DOVER	31N/2W	12
11/20/2023	DELTA OIL CO INC	MUZYL OIL CORP	DOYLE B3-14	21137537990000	53799	OTSEGO	DOVER	31N/2W	14
11/20/2023	DELTA OIL CO INC	MUZYL OIL CORP	DOYLE A4-14	21137538000000	53800	OTSEGO	DOVER	31N/2W	14
11/20/2023	DELTA OIL CO INC	MUZYL OIL CORP	STATE DOVER A4-10	21137547110000	54711	OTSEGO	DOVER	31N/2W	10
11/20/2023	DELTA OIL CO INC	MUZYL OIL CORP	STATE DOVER B1-16	21137547120000	54712	OTSEGO	DOVER	31N/2W	16
11/20/2023	DELTA OIL CO INC	MUZYL OIL CORP	HANSEN ET AL B2-35	21137547420000	54742	OTSEGO	CORWITH	32N/2W	35
11/20/2023	DELTA OIL CO INC	MUZYL OIL CORP	JACKSON D3-12	21137562860000	56286	OTSEGO	DOVER	31N/2W	12
11/20/2023	DELTA OIL CO INC	MUZYL OIL CORP	BENSINGER A4-12	21137566120000	56612	OTSEGO	DOVER	31N/2W	12
11/20/2023	DELTA OIL CO INC	MUZYL OIL CORP	BENSINGER B4-12	21137566130000	56613	OTSEGO	DOVER	31N/2W	12
11/20/2023	DELTA OIL CO INC	MUZYL OIL CORP	BENSINGER A3-12	21137587210000	58721	OTSEGO	DOVER	31N/2W	12
11/22/2023	LAMBDA ENERGY RESOURCES LLC	MISSAUKEE OIL AND GAS COMPANY LLC	LASSA & SCHMUCKAL 1-34	21055487060000	48706	GRAND TRAVERSE	BLAIR	26N/11W	34