

MODULE A1

GENERAL FACILITY DESCRIPTION R 299.9504(1)(c) and R 299.9508(1)(b) 40 CFR 270.14(b)(1)

List of Figures

Figure A1-1	Site Location Map
Figure A1-2	Regional Topographic Map
Figure A1-3	Local Topographic Map

List of Appendices

Appendix A1-1	Midland Location Plot Plan (Drawing Y1-30100)
Appendix A1-2	Photographic Log

A1.A GENERAL DESCRIPTION

The Dow Silicones Corporation (DSC) facility occupies approximately 350 acres of land in the southern portion of the City of Midland in Section 26 of Midland Township: Township 14N, Range 2E (Figure A1-2). Only 0.75 acre of the Dow Silicones facility is regulated under RCRA or Part 111 of Act 451.

Dow Silicones Corporation (formerly known as Dow Corning Corporation) was founded in 1943 to develop and manufacture a newly discovered class of polymeric materials based on silicon chemistry. Today this technology is used to produce thousands of products, used in every major industry including aerospace, medicine, automotive, electronics, paper and textiles.

At the Midland site, Dow Silicones manufactures a variety of silicon-based intermediates for use in industrial processes by other Dow Silicones locations and by industrial customers, as well as finished products for end markets. Hazardous wastes are generated from the manufacturing processes, off-spec products, pollution control devices, cleaning of process equipment, and from pilot plant and laboratory operations. Dow Silicones maintains an active waste minimization program to reduce the quantity and toxicity of hazardous wastes generated, through source reduction and waste recovery, reuse and reclamation.

The licensed hazardous waste facility at the Midland plant is located in the 800 and 1000 blocks, as shown on drawing Y1-30100, "Midland Location Plot Plan", located in Appendix A1-1. The licensed facility consists of the 809 container storage building, the 806 tank storage with adjacent tanker loading area, along with support structures and other equipment in the 800 block, and a hazardous waste landfill, the active portion of which is in the 1000 block.

The licensed facility serves the following function:

1. Accumulation of wastes generated at the Midland plant prior to shipment to off-site facilities for treatment or disposal;

No hazardous waste will be disposed of in the landfill. Only non-RCRA regulated materials are disposed of in the landfill, examples include: RCRA-empty containers; containers of non regulated gloves, rags, pieces of metal and glass and other debris; column packing; cleaned process equipment; asbestos; construction debris; solidified silicone sealants, rubber and gums; solidified polysiloxane gels; nonhazardous contaminated dirt; nonhazardous sandblast media and used office furniture.

No wastes containing free liquids are disposed in the landfill and no lead contaminated (D008) hazardous wastes have been placed in the landfill since 1985.

A1.A(1) Facility Location

Facility location:

Dow Silicones Corporation
3901 South Saginaw Road
Midland, Michigan 48640

Facility mailing address:

Dow Silicones Corporation
1790 Building, Washington Street
Midland, Michigan 48674

The site is privately owned and is not located on government or Indian lands. There are no salt dome formations, salt bed formations, underground mines or caves on-site. An old coal mine is located in nearby Bay County, just east of the Midland area.

A1.A(2) Facility Owner

The Dow Silicones Midland plant and licensed facility are owned by:

Dow Silicones Corporation
2200 West Salzburg Road
Auburn, Michigan 48611

A1.A(3) Responsible Persons

The contact and responsible individual for operation of the Dow Silicones Midland site licensed hazardous waste facility is:

Production Leader, Infrastructure Services
414 Building, Michigan Operations
Dow Silicones Corporation
Midland, Michigan 48667

APPENDIX A1-2 PHOTOGRAPHIC LOG

Dow Silicones Corporation Midland, Michigan
Part 111 Hazardous Waste Operating License
EPA ID. No. MID 000 809 632



View of the 806 tank farm



View of secondary containment associated with the hazardous waste storage areas

APPENDIX A1-2 PHOTOGRAPHIC LOG

Dow Silicones Corporation Midland, Michigan
Part 111 Hazardous Waste Operating License
EPA ID. No. MID 000 809 632



View of the truck wash slab.



View of the emergency response storage shed.

APPENDIX A1-2 PHOTOGRAPHIC LOG

Dow Silicones Corporation Midland, Michigan
Part 111 Hazardous Waste Operating License
EPA ID. No. MID 000 809 632



View of the landfill and the warning sign



View of landfill entrance road

APPENDIX A1-2 PHOTOGRAPHIC LOG

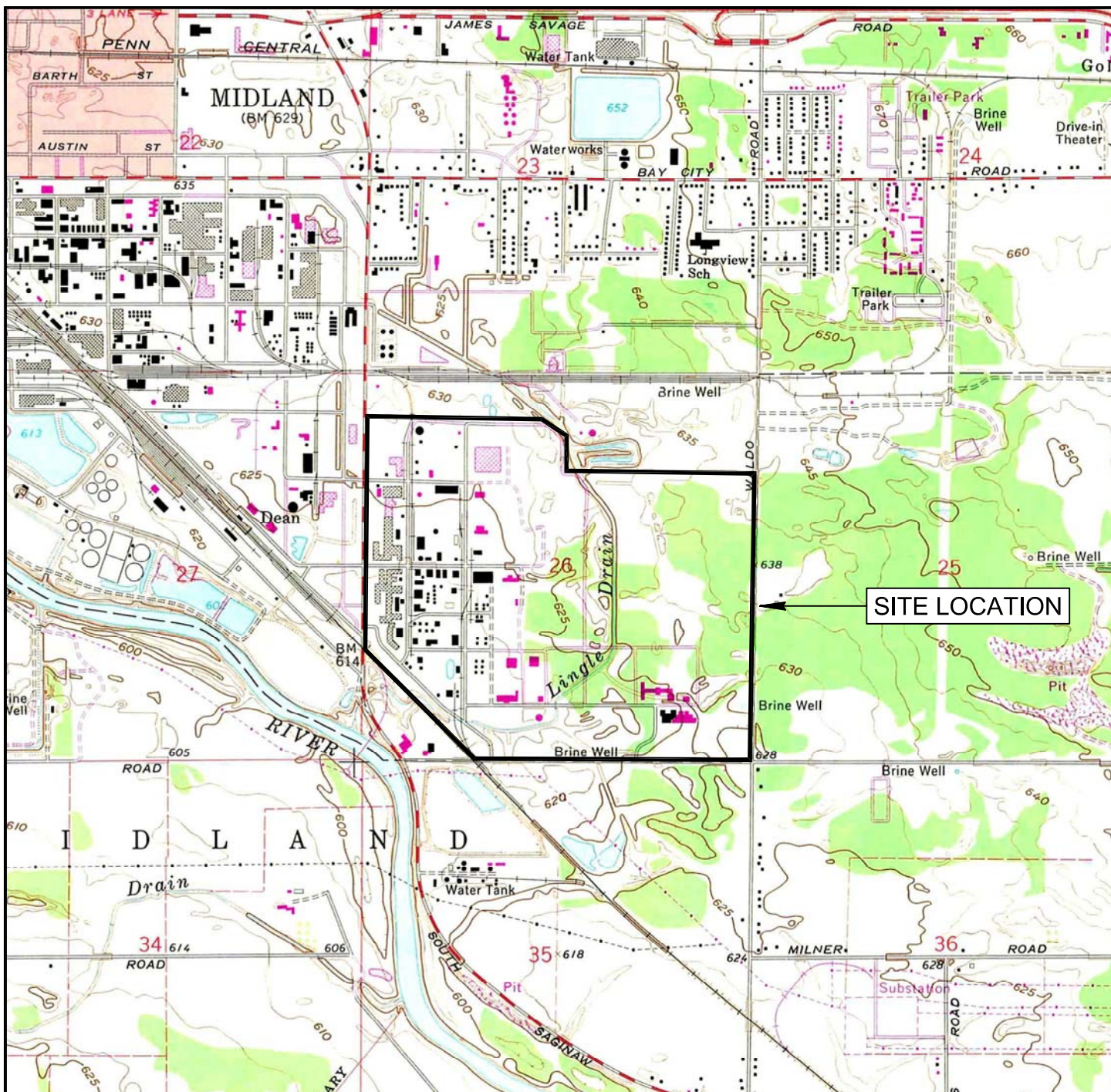
Dow Silicones Corporation Midland, Michigan
Part 111 Hazardous Waste Operating License
EPA ID. No. MID 000 809 632



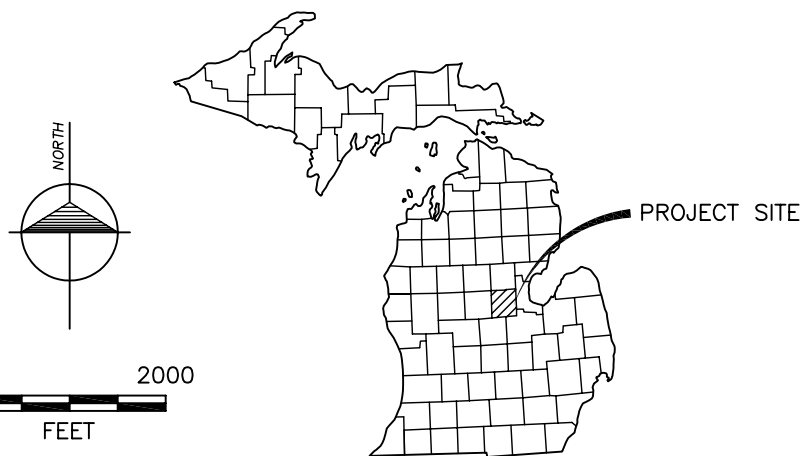
View of the 809 Building truck loading/unloading area



View of the inside of 809 building



BASE TAKEN FROM USGS MIDLAND, MICHIGAN 7.5' TOPOGRAPHIC QUADRANGLE, 1:24,000 SCALE.



DOW CORNING CORPORATION

DRAWN BY: NLW	DATE: JAN, 2010
CHECKED BY: MG	EDITED BY: NLW030210
FILE NAME: FgA1-1.Dwg	

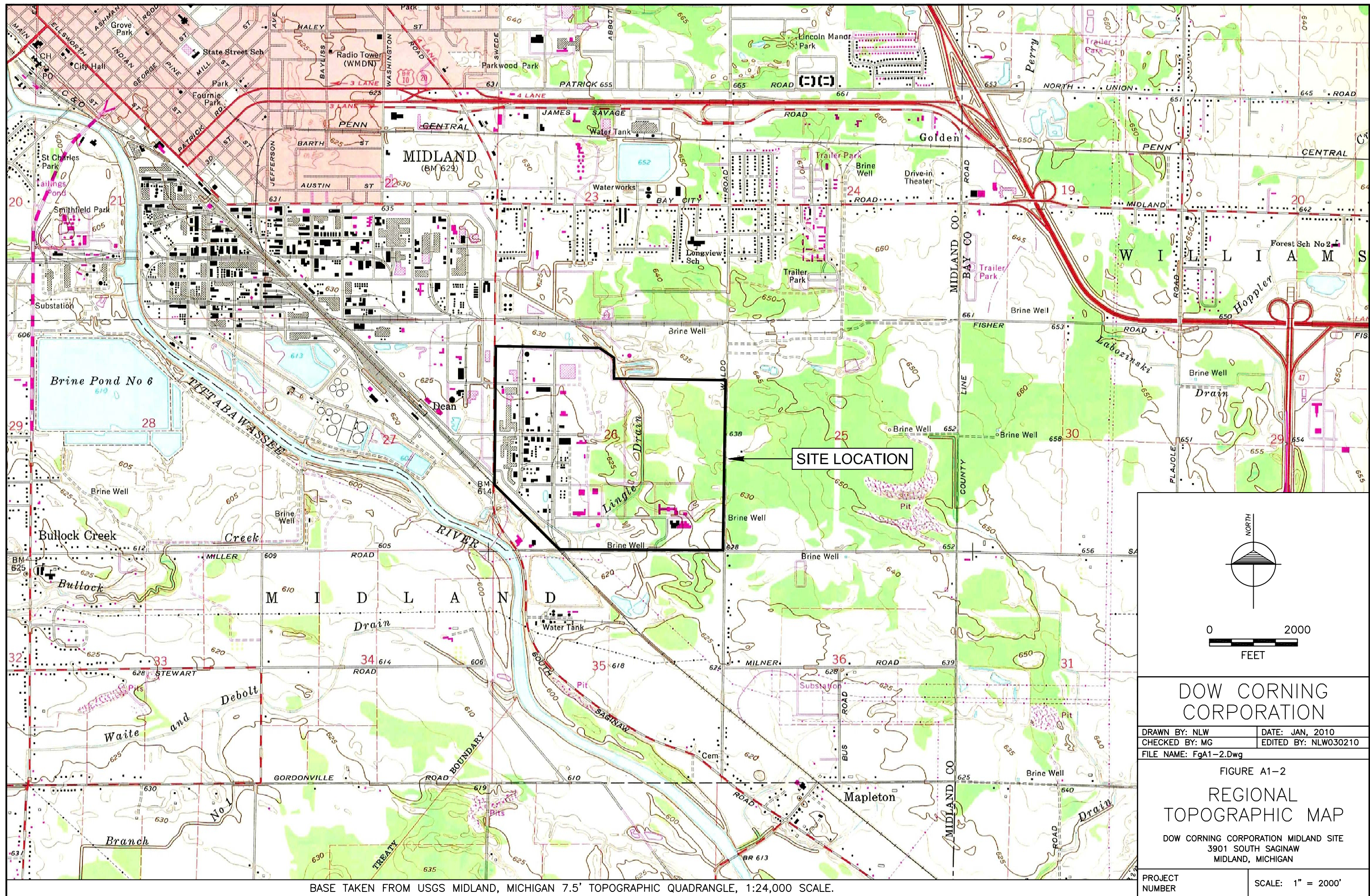
FIGURE A1-1

SITE LOCATION MAP

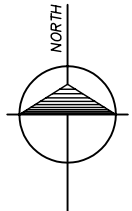
DOW CORNING CORPORATION MIDLAND SITE
3901 SOUTH SAGINAW
MIDLAND, MICHIGAN

PROJECT
NUMBER

SCALE: 1" = 2000'



BASE TAKEN FROM USGS MIDLAND, MICHIGAN 7.5' TOPOGRAPHIC QUADRANGLE, 1:24,000 SCALE.



0 2000
FEET

DOW CORNING CORPORATION

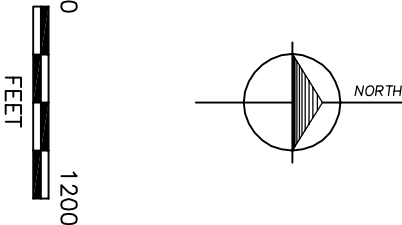
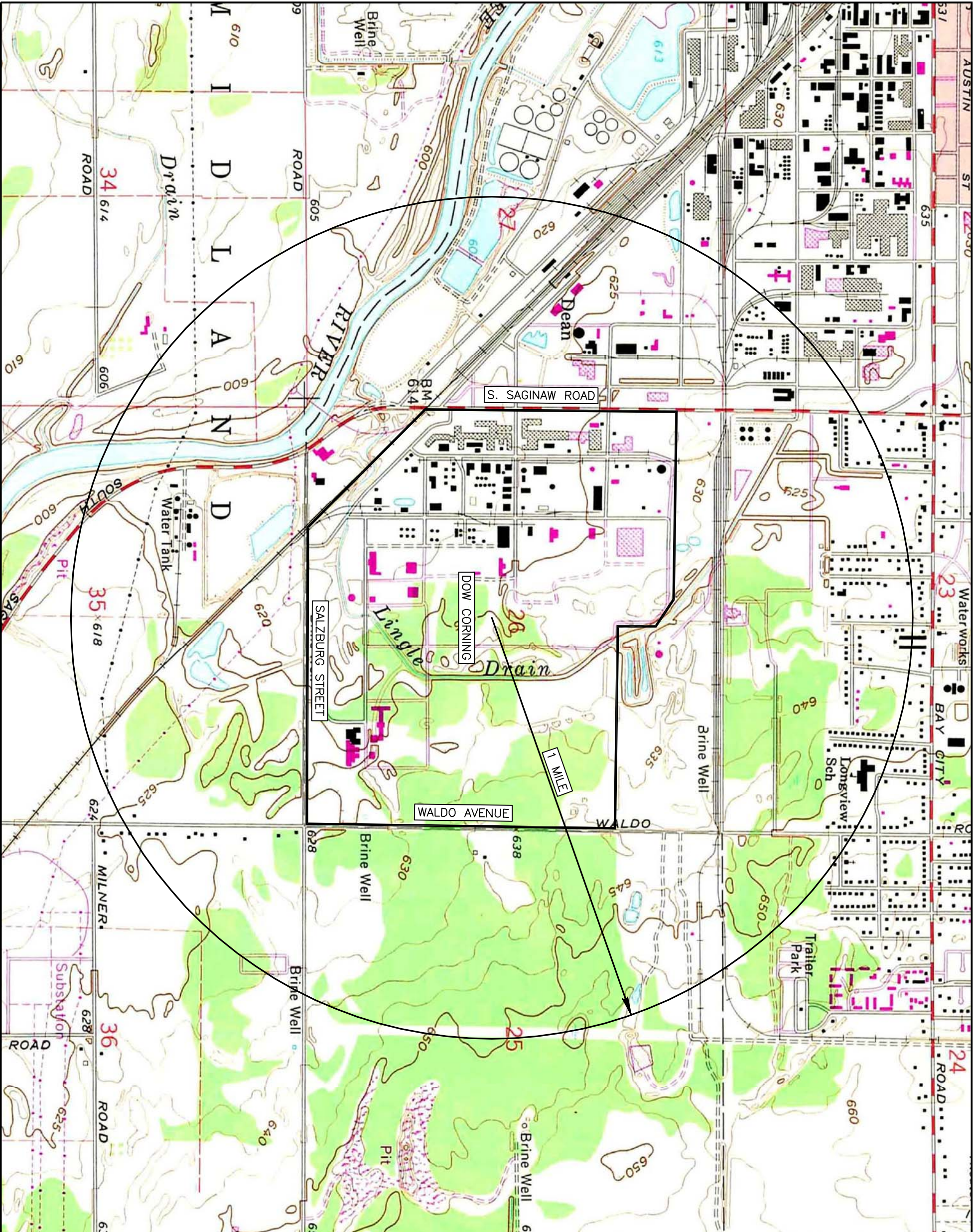
DRAWN BY: NLW	DATE: JAN, 2010
CHECKED BY: MG	EDITED BY: NLW030210
FILE NAME: FgA1-2.Dwg	

FIGURE A1-2

REGIONAL TOPOGRAPHIC MAP

DOW CORNING CORPORATION MIDLAND SITE
3901 SOUTH SAGINAW
MIDLAND, MICHIGAN

PROJECT NUMBER	SCALE: 1" = 2000'
----------------	-------------------



BASE TAKEN FROM USGS MIDLAND,
MICHIGAN 7.5' TOPOGRAPHIC
QUADRANGLE, 1:24,000 SCALE.

DOW CORNING

DRAWN BY: NLW	DATE: JAN, 2010
CHECKED BY: MG	EDITED BY: NLW012710
FILE NAME: Fga1-3.Dwg	

FIGURE A1-3

LOCAL TOPOGRAPHIC MAP

DOW CORNING CORPORATION MIDLAND SITE
3901 SOUTH SAGINAW
MIDLAND, MICHIGAN

PROJECT NUMBER	SCALE: 1" = 1200'
-------------------	-------------------

MODULE A1

GENERAL FACILITY DESCRIPTION
R 299.9504(1)(c) and R 299.9508(1)(b)
40 CFR 270.14(b)(1)

List of Figures

Figure A1-1	Site Location Map
Figure A1-2	Regional Topographic Map
Figure A1-3	Local Topographic Map

List of Appendices

Appendix A1-1	Midland Location Plot Plan (Drawing Y1-30100)
Appendix A1-2	Photographic Log

A1.A GENERAL DESCRIPTION

The Dow Silicones Corporation (DSC) facility occupies approximately 350 acres of land in the southern portion of the City of Midland in Section 26 of Midland Township: Township 14N, Range 2E (Figure A1-2). Only 0.75 acre of the Dow Silicones facility is regulated under RCRA or Part 111 of Act 451.

Dow Silicones Corporation (formerly known as Dow Corning Corporation) was founded in 1943 to develop and manufacture a newly discovered class of polymeric materials based on silicon chemistry. Today this technology is used to produce thousands of products, used in every major industry including aerospace, medicine, automotive, electronics, paper and textiles.

At the Midland site, Dow Silicones manufactures a variety of silicon-based intermediates for use in industrial processes by other Dow Silicones locations and by industrial customers, as well as finished products for end markets. Hazardous wastes are generated from the manufacturing processes, off-spec products, pollution control devices, cleaning of process equipment, and from pilot plant and laboratory operations. Dow Silicones maintains an active waste minimization program to reduce the quantity and toxicity of hazardous wastes generated, through source reduction and waste recovery, reuse and reclamation.

The licensed hazardous waste facility at the Midland plant is located in the 800 and 1000 blocks, as shown on drawing Y1-30100, "Midland Location Plot Plan", located in Appendix A1-1. The licensed facility consists of the 809 container storage building, the 806 tank storage with adjacent tanker loading area, along with support structures and other equipment in the 800 block, and a hazardous waste landfill, the active portion of which is in the 1000 block.

The licensed facility serves the following function:

1. Accumulation of wastes generated at the Midland plant prior to shipment to off-site facilities for treatment or disposal;

No hazardous waste will be disposed of in the landfill. Only non-RCRA regulated materials are disposed of in the landfill, examples include: RCRA-empty containers; containers of non regulated gloves, rags, pieces of metal and glass and other debris; column packing; cleaned process equipment; asbestos; construction debris; solidified silicone sealants, rubber and gums; solidified polysiloxane gels; nonhazardous contaminated dirt; nonhazardous sandblast media and used office furniture.

No wastes containing free liquids are disposed in the landfill and no lead contaminated (D008) hazardous wastes have been placed in the landfill since 1985.

A1.A(1) Facility Location

Facility location:

Dow Silicones Corporation
3901 South Saginaw Road
Midland, Michigan 48640

Facility mailing address:

Dow Silicones Corporation
1790 Building, Washington Street
Midland, Michigan 48674

The site is privately owned and is not located on government or Indian lands. There are no salt dome formations, salt bed formations, underground mines or caves on-site. An old coal mine is located in nearby Bay County, just east of the Midland area.

A1.A(2) Facility Owner

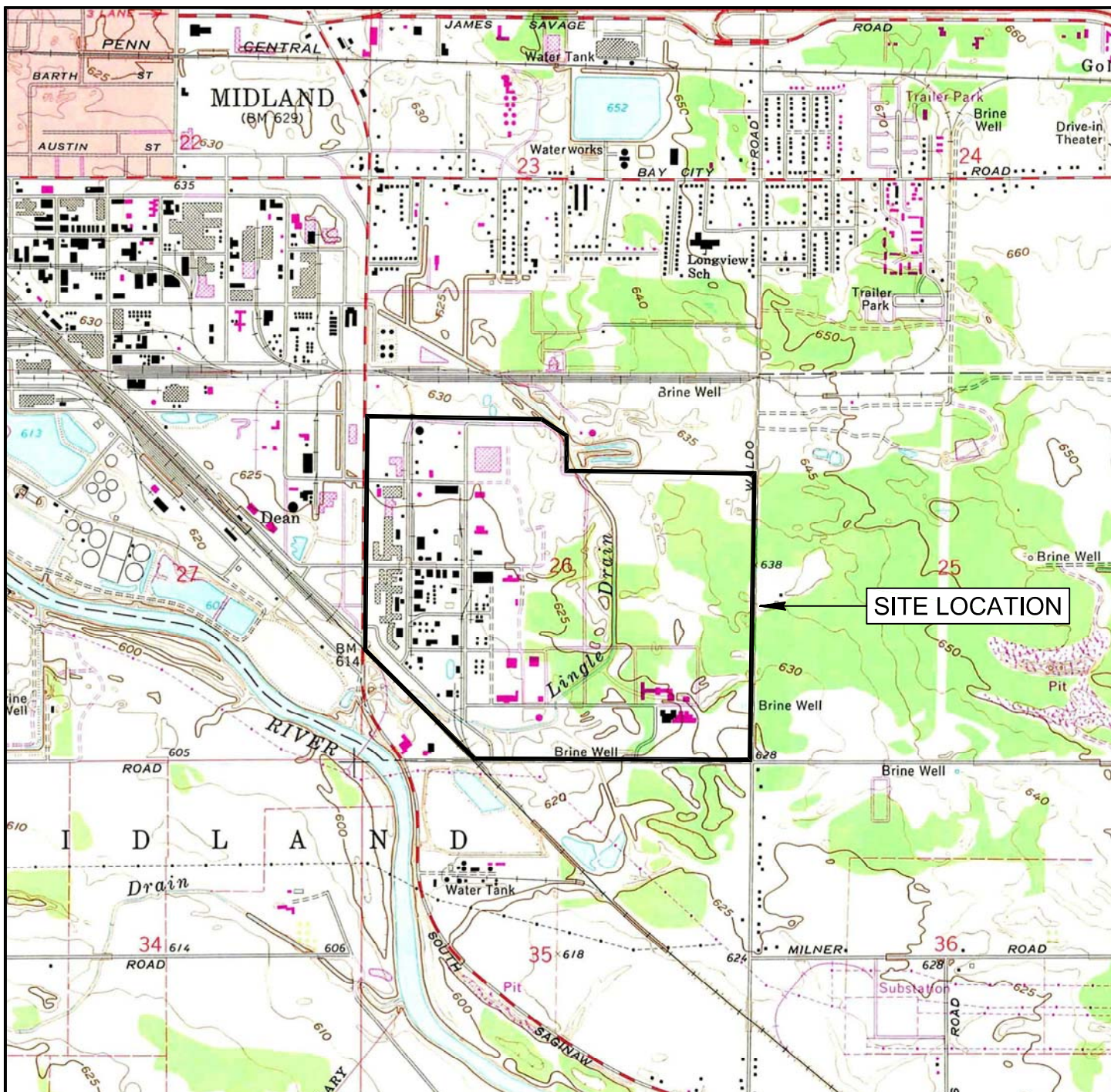
The Dow Silicones Midland plant and licensed facility are owned by:

Dow Silicones Corporation
2200 West Salzburg Road
Auburn, Michigan 48611

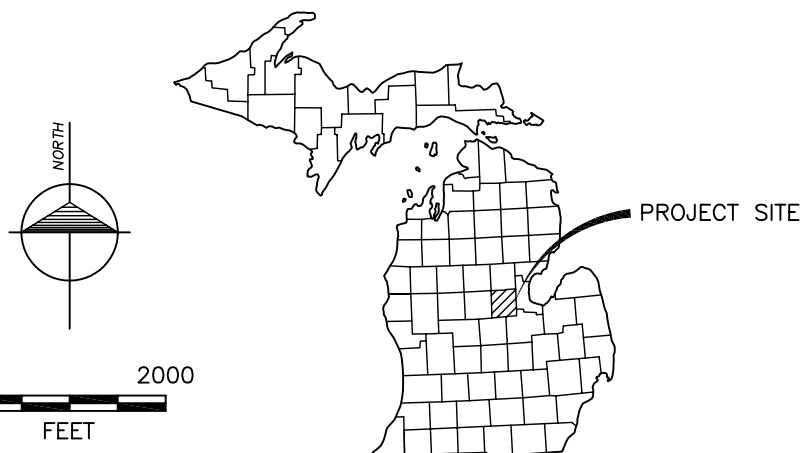
A1.A(3) Responsible Persons

The contact and responsible individual for operation of the Dow Silicones Midland site licensed hazardous waste facility is:

Production Leader, Infrastructure Services
414 Building, Michigan Operations
Dow Silicones Corporation
Midland, Michigan 48667



BASE TAKEN FROM USGS MIDLAND, MICHIGAN 7.5' TOPOGRAPHIC QUADRANGLE, 1:24,000 SCALE.



DOW CORNING CORPORATION

DRAWN BY: NLW	DATE: JAN, 2010
CHECKED BY: MG	EDITED BY: NLW030210
FILE NAME: FgA1-1.Dwg	

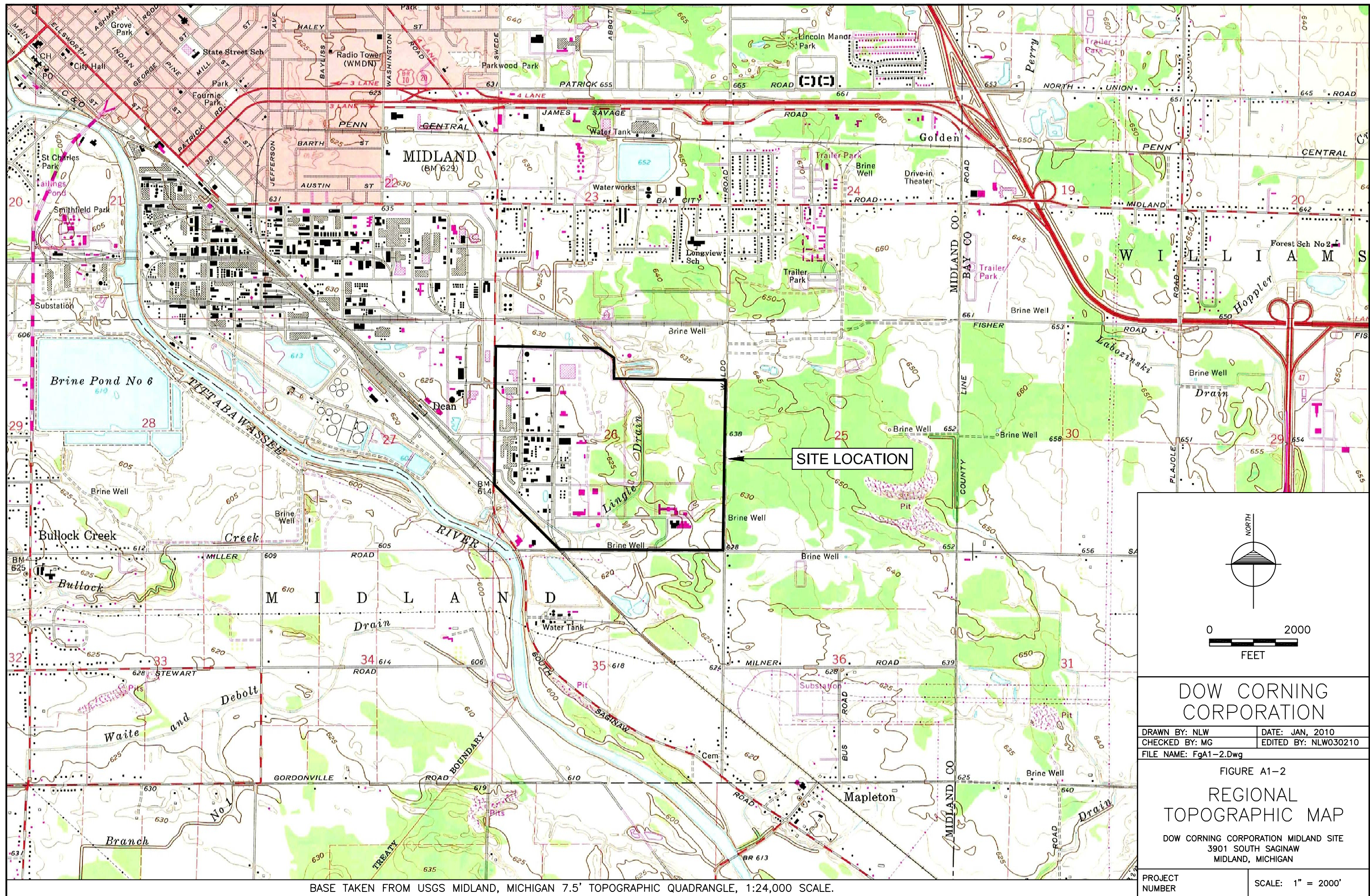
FIGURE A1-1

SITE LOCATION MAP


DOW CORNING CORPORATION MIDLAND SITE
3901 SOUTH SAGINAW
MIDLAND, MICHIGAN

PROJECT
NUMBER

SCALE: 1" = 2000'



BASE TAKEN FROM USGS MIDLAND, MICHIGAN 7.5' TOPOGRAPHIC QUADRANGLE, 1:24,000 SCALE.


0 2000
FEET

DOW CORNING CORPORATION

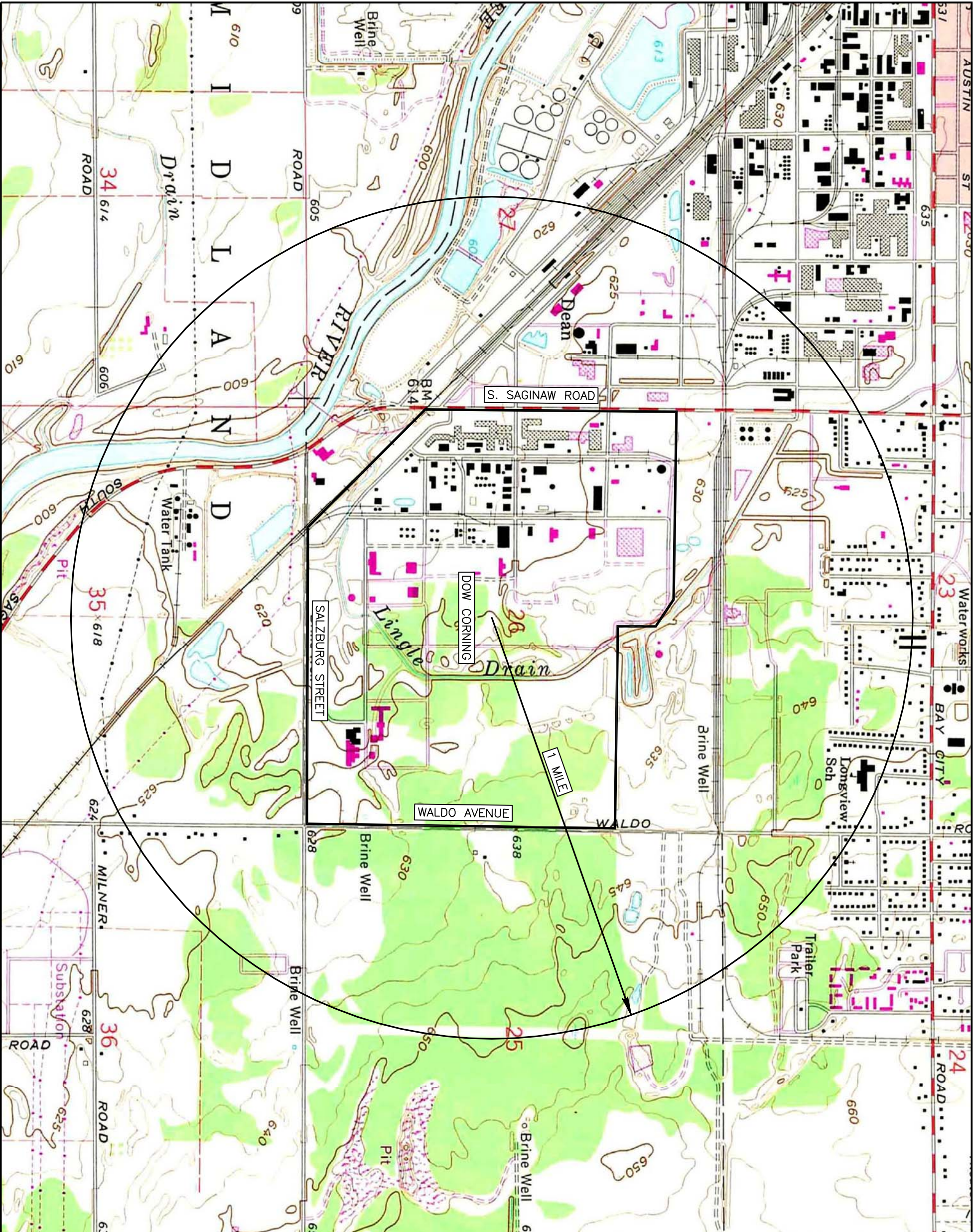
DRAWN BY: NLW	DATE: JAN, 2010
CHECKED BY: MG	EDITED BY: NLW030210
FILE NAME: FgA1-2.Dwg	

FIGURE A1-2

REGIONAL TOPOGRAPHIC MAP

DOW CORNING CORPORATION MIDLAND SITE
3901 SOUTH SAGINAW
MIDLAND, MICHIGAN

PROJECT NUMBER	SCALE: 1" = 2000'
----------------	-------------------



PROJECT NUMBER

SCALE: 1" = 1200'

LOCAL TOPOGRAPHIC MAP

DOW CORNING CORPORATION MIDLAND SITE
3901 SOUTH SAGINAW
MIDLAND, MICHIGAN

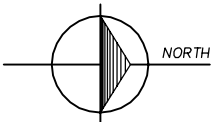
FIGURE A1-3

DRAWN BY: NLW
CHECKED BY: MG
FILE NAME: Fga1-3.Dwg

DATE: JAN, 2010
EDITED BY: NLW012710

DOW CORNING

BASE TAKEN FROM USGS MIDLAND, MICHIGAN 7.5' TOPOGRAPHIC QUADRANGLE, 1:24,000 SCALE.



APPENDIX A1-2 PHOTOGRAPHIC LOG

Dow Silicones Corporation Midland, Michigan
Part 111 Hazardous Waste Operating License
EPA ID. No. MID 000 809 632



View of the 806 tank farm



View of secondary containment associated with the hazardous waste storage areas

APPENDIX A1-2 PHOTOGRAPHIC LOG

Dow Silicones Corporation Midland, Michigan
Part 111 Hazardous Waste Operating License
EPA ID. No. MID 000 809 632



View of the truck wash slab.



View of the emergency response storage shed.

APPENDIX A1-2 PHOTOGRAPHIC LOG

Dow Silicones Corporation Midland, Michigan
Part 111 Hazardous Waste Operating License
EPA ID. No. MID 000 809 632



View of the landfill and the warning sign



View of landfill entrance road

APPENDIX A1-2 PHOTOGRAPHIC LOG

Dow Silicones Corporation Midland, Michigan
Part 111 Hazardous Waste Operating License
EPA ID. No. MID 000 809 632



View of the 809 Building truck loading/unloading area



View of the inside of 809 building