

Make your own CELL PIZZA

Make a pizza that resembles an animal cell!

Directions: For your base, use either a taco shell, pizza crust, bagel, or pita bread. Then, place the following toppings to represent cell **organelles**. If you don't have everything, be creative and use whatever you have at home!

Cytoplasm: The cytoplasm is a semi-fluid medium that acts to hold all the organelles in place.

Ingredient: Pizza Sauce

Nucleus: The nucleus is the control center of the cell, and where the DNA is stored. DNA is the genetic material organisms inherit from their parents.

Ingredient: Pepperoni

Endoplasmic Reticulum: The endoplasmic reticulum acts as a transport system, and also manufactures the cell membrane.

Ingredient: Shredded Mozzarella

Lysosomes: Lysosomes contain digestive enzymes that break down macromolecules. They are built in the Golgi complex.

Ingredient: Parmesan Cheese

Golgi Complex: The Golgi complex works to stack, ship, and package products such as proteins, which come from the endoplasmic reticulum.

Ingredient: Mushrooms

Ribosomes: Ribosomes are the site of protein synthesis.

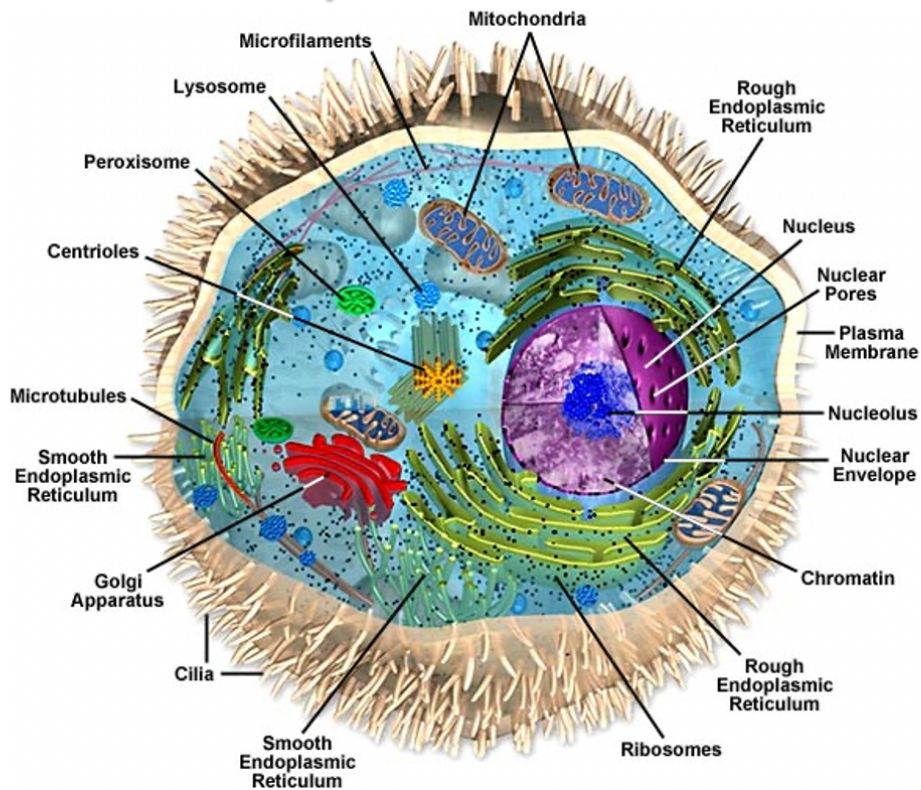
Ingredient: Oregano

Mitochondria: The Mitochondria are responsible for generating power for the cell.

Ingredient: Kidney Beans

Once you have placed all your toppings on your pizza, you are done! Heat the pizza up in the microwave or oven if desired, otherwise enjoy as is!

Anatomy of the Animal Cell



explore
LAB SCIENCE

www.michigan.gov/explorelabscience