



Michigan Flu Focus

Weekly Influenza Surveillance Report



Editor: Sue Kim, MPH

Editor Email: KimS2@michigan.gov

April 12, 2019

Vol. 16; No.27

Week Ending April 6, 2019 | WEEK 14

Michigan Influenza Activity

No Activity
Sporadic
Local
Regional
<u>Widespread</u>

*Clicking on the current activity level will direct you to the CDC webpage defining each activity level for the geographic spread of influenza

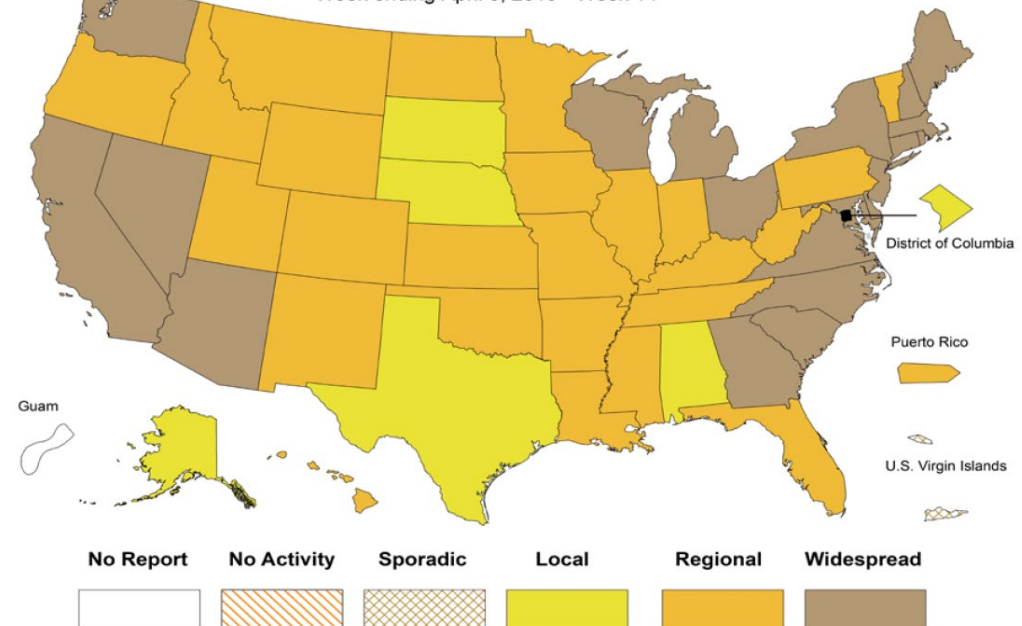
Updates of Interest

The National Institutes of Health (NIH) – a new 15-article supplement has been published in the April 15 issue of the *Journal of Infectious Diseases*. Experts in immunology, virology, epidemiology, and vaccine development detail efforts to improve seasonal influenza vaccines and to ultimately develop a universal influenza vaccine. Please see the following link for details:

Link: <https://www.nih.gov/news-events/news-releases/scientists-review-influenza-vaccine-research-progress-opportunities>

Weekly Influenza Activity Estimates Reported by State & Territorial Epidemiologists*

Week ending April 6, 2019 - Week 14



Source: CDC FluView

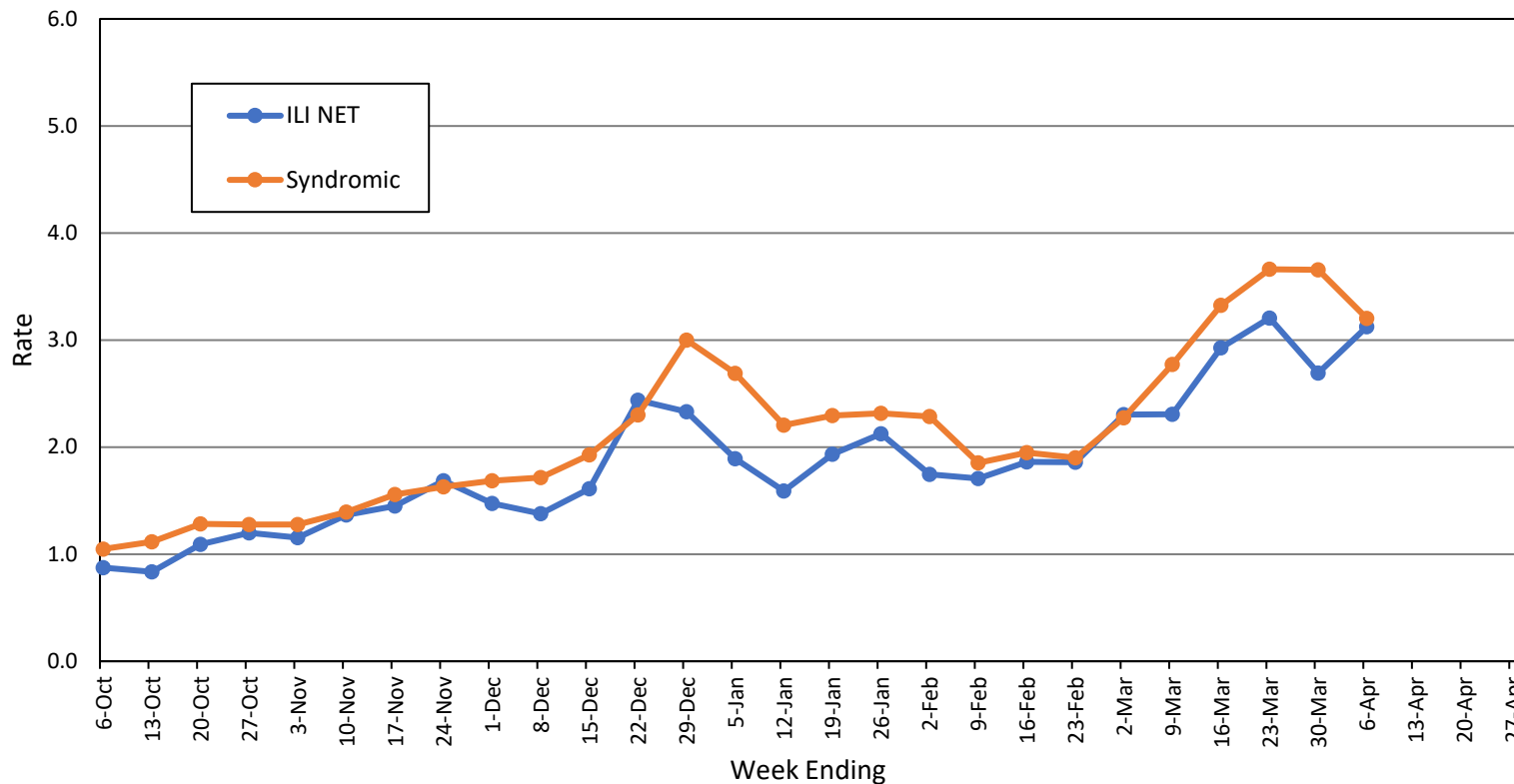
Influenza-associated Pediatric Mortality

One (1) pediatric influenza (A/H1N1-09) death has been confirmed by MDHHS for the 2018-2019 flu season. Nationally, 86 influenza-associated pediatric deaths have been reported thus far for the 2018-2019 flu season.

- Number of reports by region: 36 total [C(12), N(2), SE(14), SW(8)]
- Proportion of visits due to ILI: ↓ 3.1% (regional baseline*: 1.8%)
- A total of 379 patient visits due to ILI were reported out of 12,131 office visits

*Regional baseline is developed by calculating the mean percentage of patient visits for ILI during non-influenza weeks for the previous three seasons and adding two standard deviations.

MI Statewide ILI NET and Syndromic Surveillance Rates, 2018-2019



National Surveillance

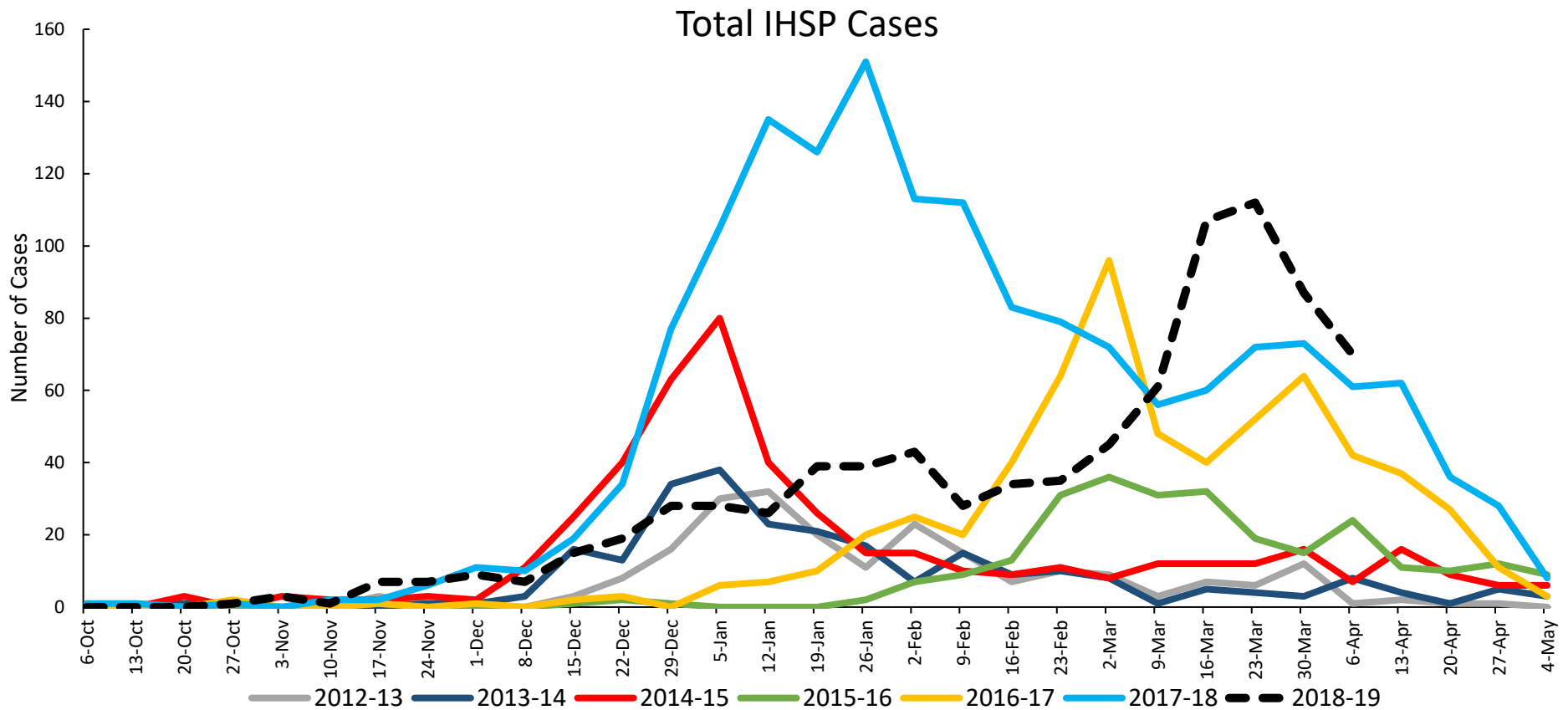
In the United States, 2.8% of outpatient visits were due to influenza-like illness (ILI), which is above the national baseline of 2.2%.

Become a sentinel provider!

Contact Shelly Doeblner at DoeblerM@michigan.gov

Influenza Hospitalization Surveillance Project

The CDC Influenza Hospitalization Surveillance Project (IHSP) provides population-based rates of hospitalization due to severe influenza-related illness through active surveillance and chart review of lab-confirmed cases from Oct. 1, 2018 until Apr. 30, 2019, for Clinton, Eaton, Ingham, Genesee, and Washtenaw counties. Since Oct. 1, there have been **851 (113 pediatric, 738 adult)** influenza-related hospitalizations reported in the catchment area for the 2018-2019 season.



Washtenaw County was added in 2017-2018

MDHHS Bureau of Laboratories reported 60 new positive influenza results (36C, 0N, 2SE, 22SW)

Respiratory Virus	# Positive Respiratory Virus Results by Region				Overall Total	2017-18 Total
	C	N	SE	SW		
2009 A/H1N1pdm	178	23	51	124	376	80
Influenza A/H3	104	12	14	95	225	579
Influenza B	2	10	10	5	27	220
Total	284	45	75	224	628	879

Michigan Sentinel Clinical Lab Respiratory Virus Data

Ten (10) sentinel clinical labs (3SE, 0SW, 7C, 0N) reported during this week

SE Region

- Influenza A: moderate-high; decreasing
- Influenza B: moderate; steady
- Parainfluenza: slightly elevated
- RSV: slightly elevated
- Adenovirus: low
- hMPV: elevated

Central Region

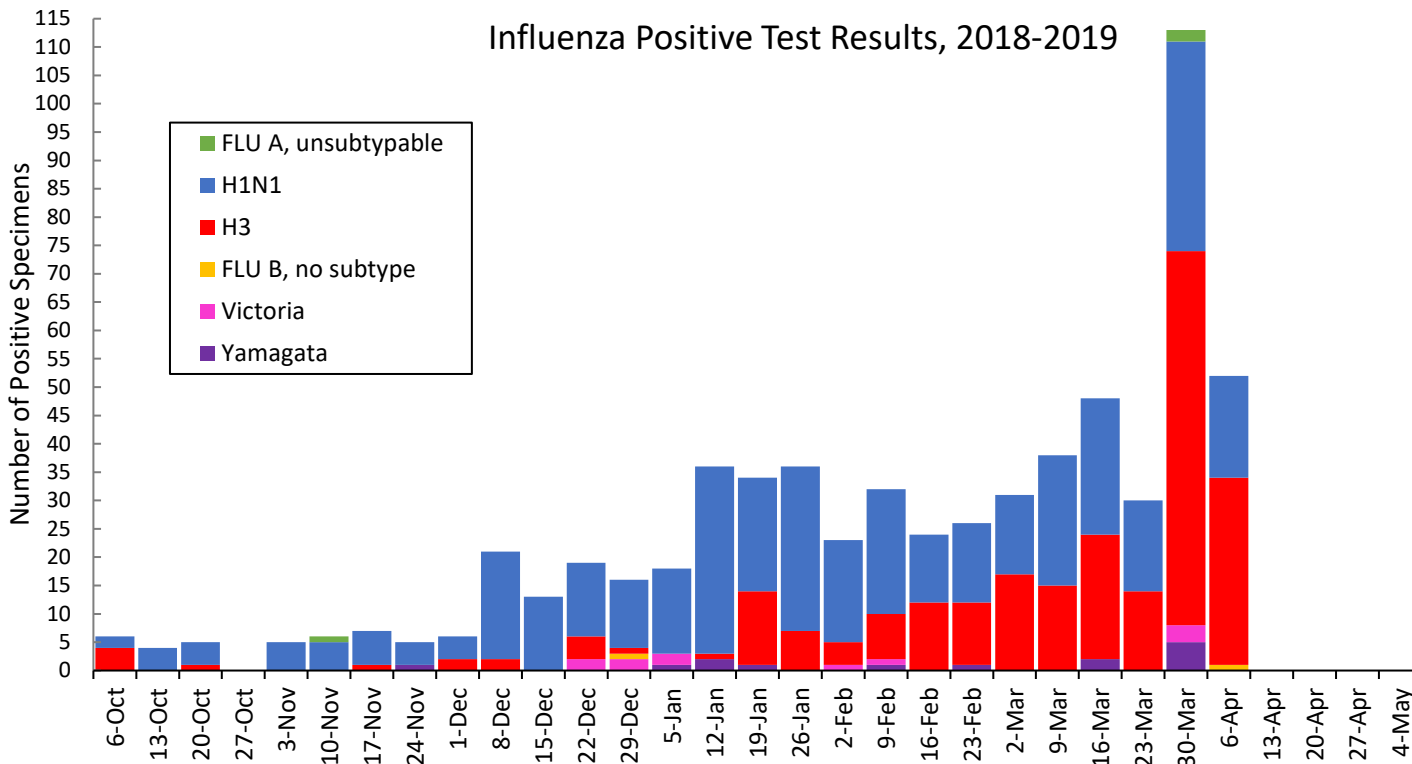
- Influenza A: moderate; decreasing
- Influenza B: low-slightly elevated; some increases
- Parainfluenza: low
- RSV: low; some decreases
- Adenovirus: low
- hMPV: low-slightly elevated

SW Region

- Influenza A: no data available
- Influenza B: no data available
- Parainfluenza: no data available
- RSV: no data available
- Adenovirus: no data available
- hMPV: no data available

North Region

- Influenza A: no data available
- Influenza B: no data available
- Parainfluenza: no data available
- RSV: no data available
- Adenovirus: no data available
- hMPV: no data available



Based on STARLIMS MDHHS BOL Testing Portal

Note: Flu B subtyping will be reported based on MDHHS BOL testing runs (roughly each month) and will be backtracked into this graph

Most recent MDHHS BOL Flu B subtyping run: **April 4, 2019**

There were 4 new respiratory viral outbreaks (1C, 2N, 1SE, 0SW) reported to MDHHS during this time period. Respiratory outbreaks for the 2018-2019 season are listed in the table below.

Facility Type	C	N	SE	SW	Total	2016-2017 Total	2017-2018 Total
Schools: K-12 & College	3	2	3	1	9	25	14
Long-term Care / Assisted Living Facility	14	3	16	13	46	138	238
Healthcare Facility	1	0	0	0	1	23	4
Daycare	0	0	0	0	0	3	4
Homeless Shelter	0	0	1	0	1	1	0
Correctional Facility	2	4	0	1	7	2	10
Other	0	0	0	0	0	3	0
Total	20	9	20	15	64	195	270

Did you know?

Congregate setting outbreaks of viral respiratory illnesses are required to be reported to your local health department? See:

- [Influenza Guidance for Healthcare Providers](#)
- [Guideline for influenza and Respiratory Virus Outbreaks in Long-Term Care Facilities](#)

FluBytes

- [WHO Recommendation Made for H3N2 Virus Vaccine Strain](#)
- [NIH Begins First Human Trials of Potential Universal Flu Vaccine](#)
 - [Supplemental Universal Flu Vaccine Articles](#)
- [Increasing Influenza Vaccination in Health Care Workers](#)
- [Flu Vaccine Tied to Lower Mortality in Heart Failure Patients](#)
- [Flu Activity Surveillance Update](#)

MDHHS Contributors

Bureau of Epidemiology and Population Health – S. Bidol, MPH, S. Eckel, MPH, S. Kim, MPH

Bureau of Family Health Services – M. Doebler, MPH

Bureau of Labs – B. Robeson, MT, V. Vavricka, MS

For questions or to be added to the distribution list, please contact Sue Kim at KimS2@michigan.gov