



# Michigan Flu Focus

Weekly Influenza Surveillance Report



Editor: Sue Kim, MPH

Editor Email: [KimS2@michigan.gov](mailto:KimS2@michigan.gov)

May 10, 2019

Vol. 16; No.31

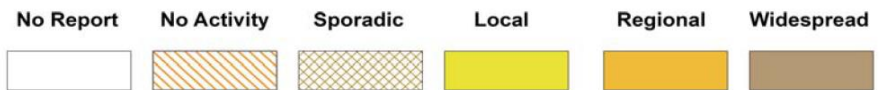
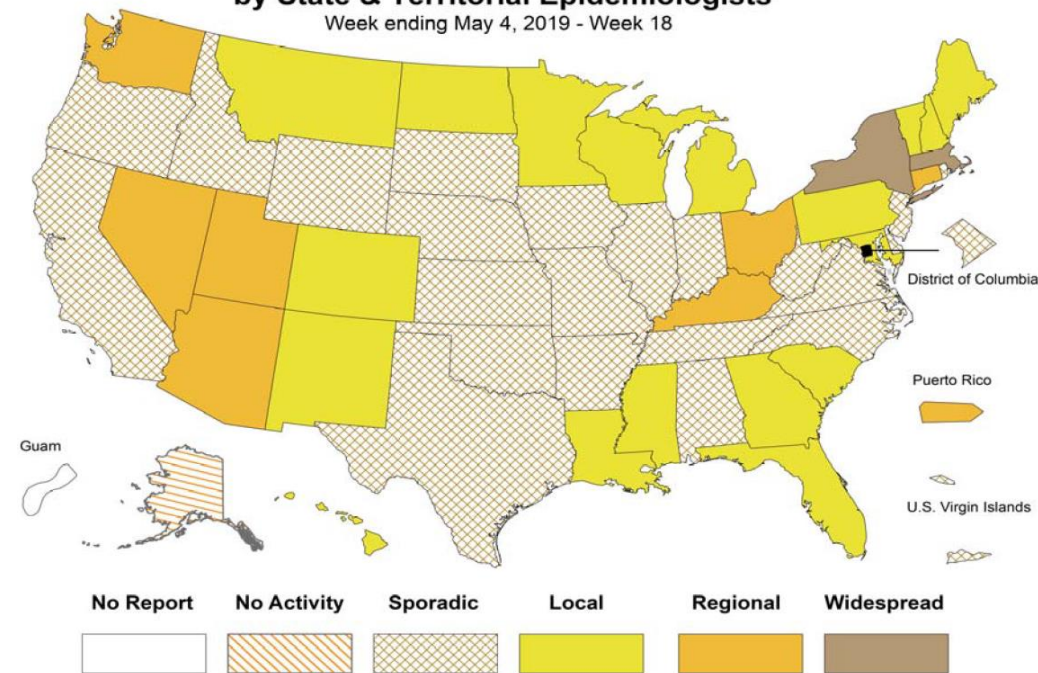
Week Ending May 4, 2019 | WEEK 18

Michigan Influenza Activity
No Activity
Sporadic
<b>Local</b>
Regional
Widespread

\*Clicking on the current activity level will direct you to the CDC webpage defining each activity level for the geographic spread of influenza

## Weekly Influenza Activity Estimates Reported by State & Territorial Epidemiologists\*

Week ending May 4, 2019 - Week 18



Source: CDC FluView

## Updates of Interest

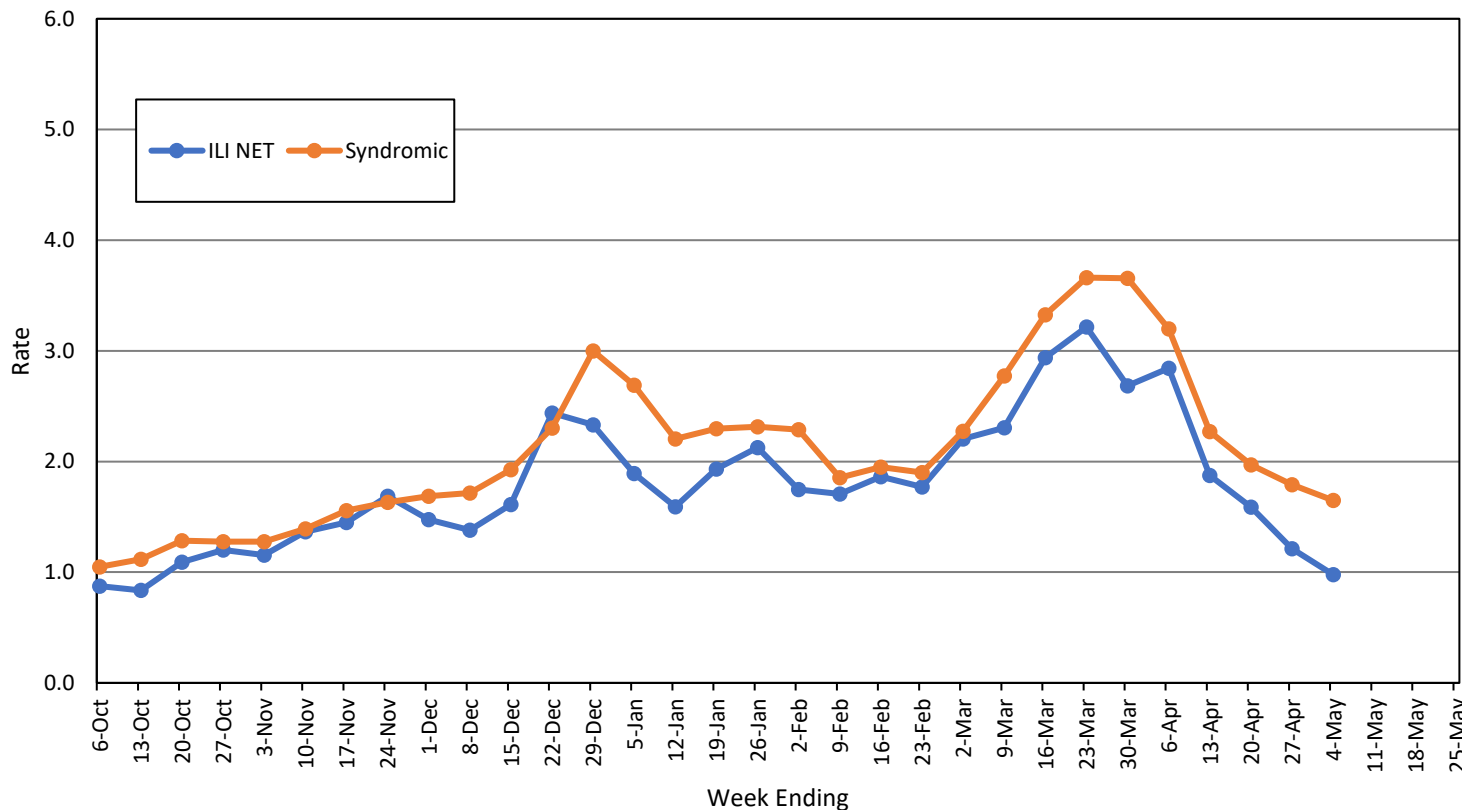
Influenza activity continues to decrease nationally. Please see CDC's weekly FluView report for further details on influenza activity.  
 Link: <https://www.cdc.gov/flu/weekly>

**Influenza-associated Pediatric Mortality**  
 One (1) pediatric influenza (A/H1N1-09) death has been confirmed by MDHHS for the 2018-2019 flu season. Nationally, 106 influenza-associated pediatric deaths have been reported thus far for the 2018-2019 flu

- Number of reports by region: 29 total [C(9), N(1), SE(14), SW(5)]
- Proportion of visits due to ILI: ↓ 1.0% (regional baseline\*: 1.8%)
- A total of 110 patient visits due to ILI were reported out of 11,248 office visits

\*Regional baseline is developed by calculating the mean percentage of patient visits for ILI during non-influenza weeks for the previous three seasons and adding two standard deviations.

MI Statewide ILI NET and Syndromic Surveillance Rates, 2018-2019



## National Surveillance

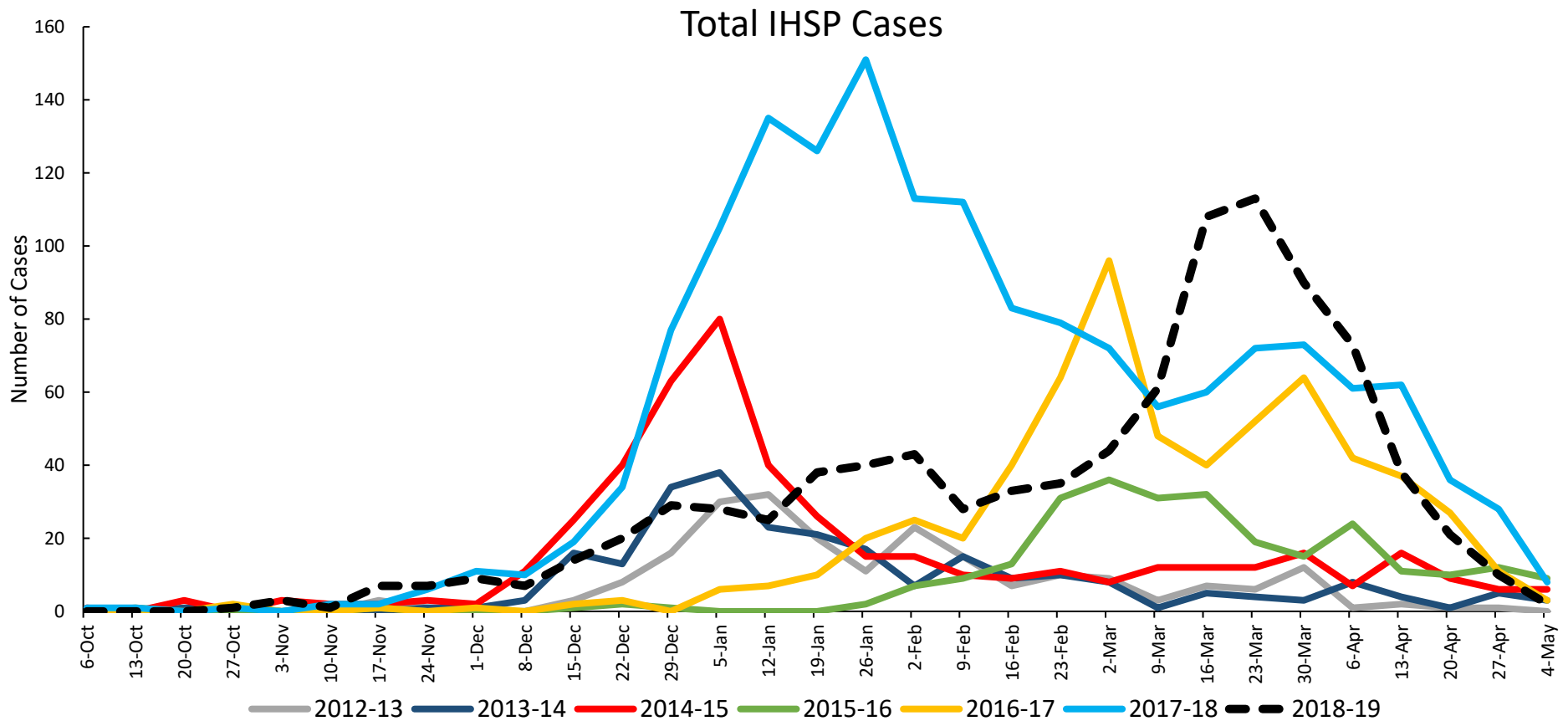
In the United States, 1.6% of outpatient visits were due to influenza-like illness (ILI), which is below the national baseline of 2.2%.

**Become a sentinel provider!**

Contact Shelly Doeblner at [DoeblerM@michigan.gov](mailto:DoeblerM@michigan.gov)

### Influenza Hospitalization Surveillance Project

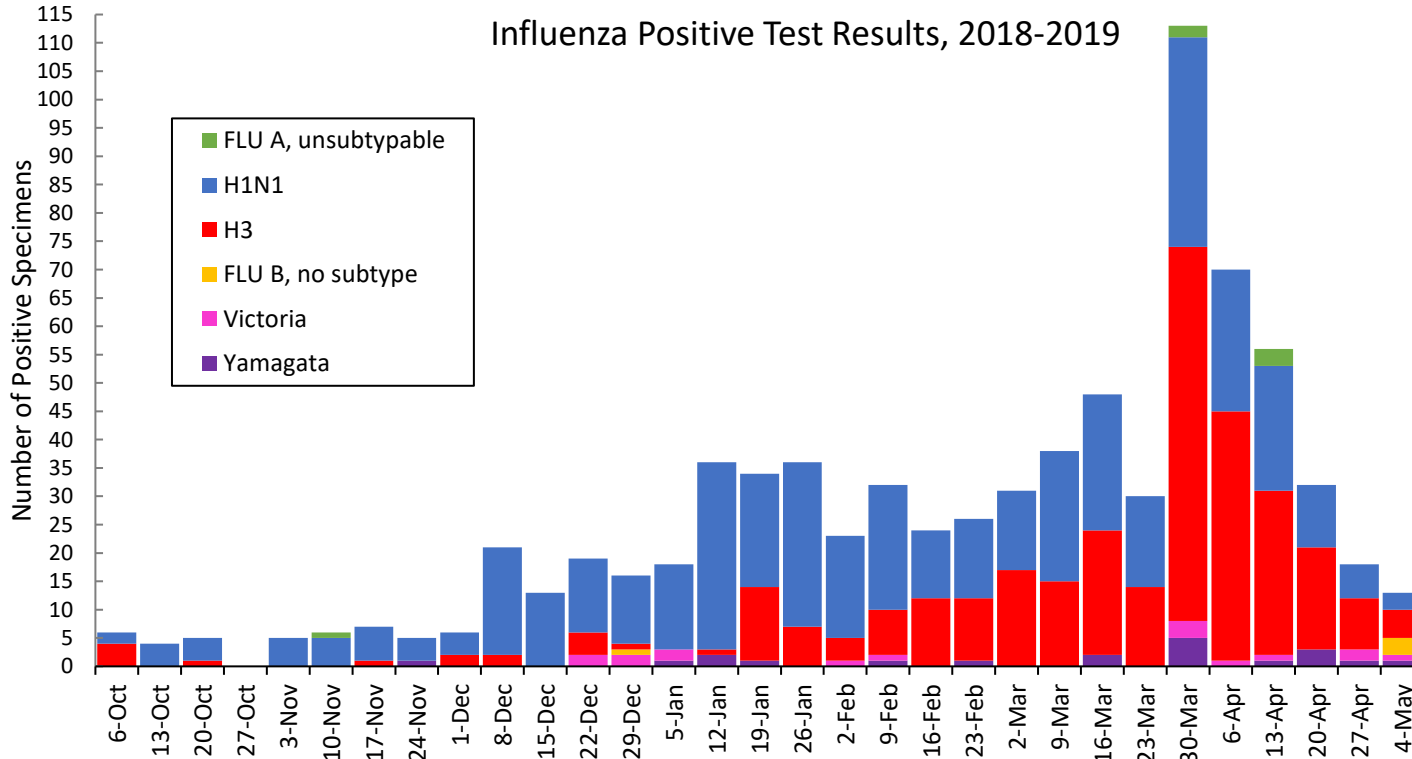
The CDC Influenza Hospitalization Surveillance Project (IHSP) provides population-based rates of hospitalization due to severe influenza-related illness through active surveillance and chart review of lab-confirmed cases from Oct. 1, 2018 until Apr. 30, 2019, for Clinton, Eaton, Ingham, Genesee, and Washtenaw counties. Since Oct. 1, there have been **928 (119 pediatric, 809 adult)** influenza-related hospitalizations reported in the catchment area for the 2018-2019 season.



Washtenaw County was added in 2017-2018

MDHHS Bureau of Laboratories reported 10 new positive influenza results (6C, 0N, 0SE, 4SW)

Respiratory Virus	# Positive Respiratory Virus Results by Region				Overall Total	2017-18 Total
	C	N	SE	SW		
2009 A/H1N1pdm	207	23	57	150	437	80
Influenza A/H3	154	12	25	118	309	579
Influenza B	4	11	11	12	38	220
<b>Total</b>	<b>365</b>	<b>46</b>	<b>93</b>	<b>280</b>	<b>784</b>	<b>879</b>



Based on STARLIMS MDHHS BOL Testing Portal

Note: Flu B subtyping will be reported based on MDHHS BOL testing runs (roughly each month) and will be backtracked into this graph

Most recent MDHHS BOL Flu B subtyping run: **May 2, 2019**

## Michigan Sentinel Clinical Lab Respiratory Virus Data

Ten (10) sentinel clinical labs (2SE, 1SW, 7C, 0N) reported during this week

### SE Region

- Influenza A: low-moderate; decreasing
- Influenza B: low-moderate; decreasing
- Parainfluenza: slightly elevated
- RSV: low
- Adenovirus: low
- hMPV: slightly elevated

### Central Region

- Influenza A: low-slightly elevated; decreasing
- Influenza B: low-slightly elevated; variable
- Parainfluenza: low-slightly elevated
- RSV: sporadic-low
- Adenovirus: low
- hMPV: low-slightly elevated

### SW Region

- Influenza A: low-slightly elevated; decreasing
- Influenza B: low
- Parainfluenza: slightly elevated; decreasing
- RSV: low
- Adenovirus: low
- hMPV: slightly elevated

### North Region

- Influenza A: no data available
- Influenza B: no data available
- Parainfluenza: no data available
- RSV: no data available
- Adenovirus: no data available
- hMPV: no data available

There was 1 new respiratory viral outbreak (0C, 1N, 0SE, 0SW) reported to MDHHS during this time period. Respiratory outbreaks for the 2018-2019 season are listed in the table below.

Facility Type	C	N	SE	SW	Total	2016-2017 Total	2017-2018 Total
Schools: K-12 & College	3	2	3	1	9	25	14
Long-term Care / Assisted Living Facility	18	5	21	13	57	138	238
Healthcare Facility	1	0	0	0	1	23	4
Daycare	0	0	0	0	0	3	4
Homeless Shelter	0	0	1	0	1	1	0
Correctional Facility	2	5	0	1	8	2	10
Other	0	0	0	0	0	3	0
<b>Total</b>	<b>24</b>	<b>12</b>	<b>25</b>	<b>15</b>	<b>76</b>	<b>195</b>	<b>270</b>

## Did you know?

Congregate setting outbreaks of viral respiratory illnesses are required to be reported to your local health department? See:

- [Influenza Guidance for Healthcare Providers](#)
- [Guideline for influenza and Respiratory Virus Outbreaks in Long-Term Care Facilities](#)

## FluBytes

- [Influenza Surveillance Updates](#)
- [High-tech Fix Hopes to Tackle H3N2 Vaccine Problems](#)
- [Flu Among Major Zoonotic Threats, According to CDC](#)
- [New Study: First Influenza Infection Affecting Later Illness](#)
- [Increasing Influenza Vaccination in Health Care Workers](#)
- [Flu Vaccine Tied to Lower Mortality in Heart Failure Patients](#)

## MDHHS Contributors

**Bureau of Epidemiology and Population Health** – S. Bidol, MPH, S. Kim, MPH

**Bureau of Family Health Services** – M. Doebler, MPH

**Bureau of Labs** – B. Robeson, MT, V. Vavricka, MS

For questions or to be added to the distribution list, please contact Sue Kim at [KimS2@michigan.gov](mailto:KimS2@michigan.gov)