



Michigan Flu Focus

Weekly Influenza Surveillance Report

March 14, 2025

Vol. 22; No. 23

Week Ending March 8, 2025 | WEEK 10

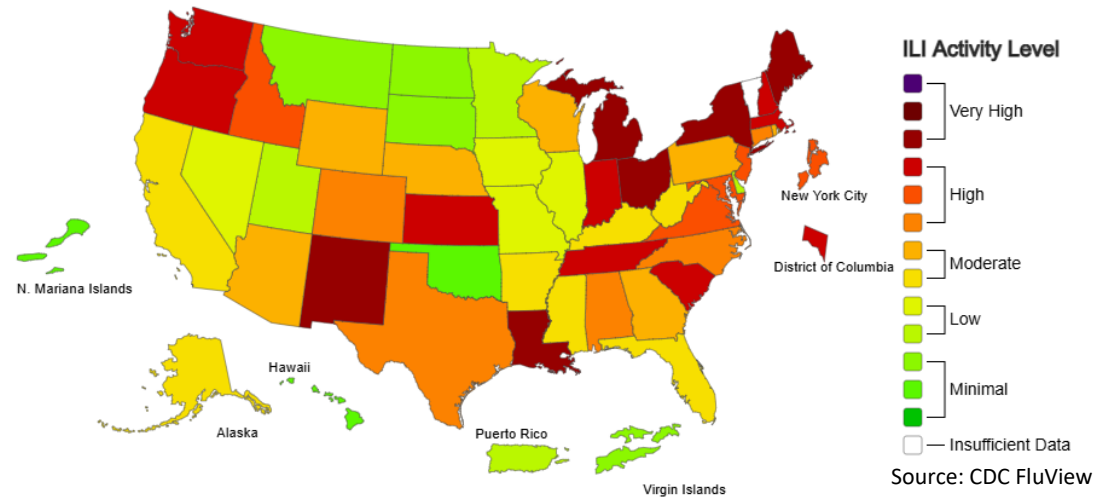
Editor: Sue Kim, MPH

Data provided in this report are preliminary and will be updated as additional data are received

Outpatient Respiratory Illness Activity Map Determined by Data Reported to ILINet

This system monitors visits for respiratory illness that includes fever plus a cough or sore throat, also referred to as ILI, not laboratory confirmed influenza and may capture patient visits due to other respiratory pathogens that cause similar symptoms.

2024-25 Influenza Season Week 10 ending Mar 08, 2025



Note: This map represents U.S. ILI activity levels reported to ILINet. The display used in past seasons showing Geographic spread of influenza has been suspended for the 2024-2025 influenza season

Updates of Interest

The Michigan Department of Health and Human Services (MDHHS) has been tracking COVID-19, influenza, and RSV activity in Michigan. Please visit the [MDHHS Seasonal Respiratory Viruses](#) webpage for more information including a dashboard to view COVID-19, influenza, and RSV activity by ED visits and hospitalizations in Michigan.

Seasonal Flu Vaccination Coverage

Michigan's goal is to vaccinate **4 million** residents during the 2024-2025 flu season.

As of **March 8, 2025, 2,757,989** Michiganders have received a flu vaccine (**72.0%** towards goal) for the 2024-2025 season.

For more info, please visit the [Michigan Respiratory Virus Dashboard](#)

Influenza-associated Pediatric Mortality

Nationally, **134** influenza-associated pediatric deaths have been reported for the 2024-2025 flu season.

Six (6) influenza-associated pediatric deaths in Michigan have been confirmed by MDHHS for the 2024-2025 flu season.

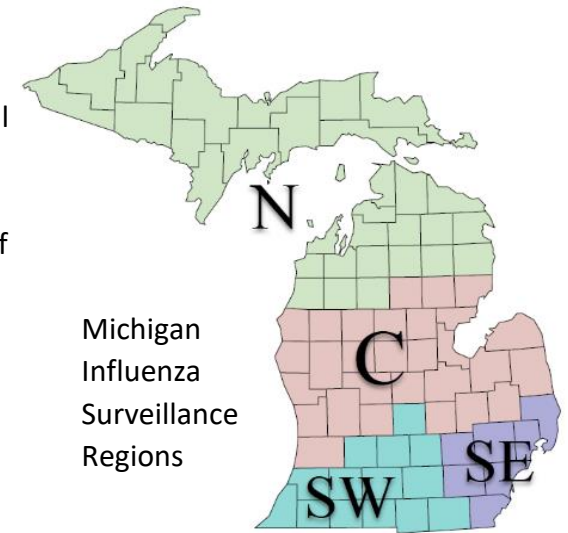
U.S. Outpatient Influenza-like Illness Surveillance Network (ILINet)

Michigan participates in ILINet, a collaborative effort between the CDC, state and local health departments, and volunteer sentinel clinicians as part of Michigan’s influenza surveillance. ILINet provides data on the total number of outpatient visits to health care providers seen for any reason and the number of those patients with influenza-like illness (ILI[‡]). Participating Michigan emergency department and urgent care facilities send syndromic data voluntarily in near real-time to the Electronic Surveillance System for the Early Notification of Community Based Epidemics (ESSENCE). Discharge diagnosis and chief complaint data elements are used to determine whether visits meet the ILI case definition. Two hundred and thirty-one (231) Michigan facilities contributing data to ESSENCE have been validated and enrolled in ILINet.

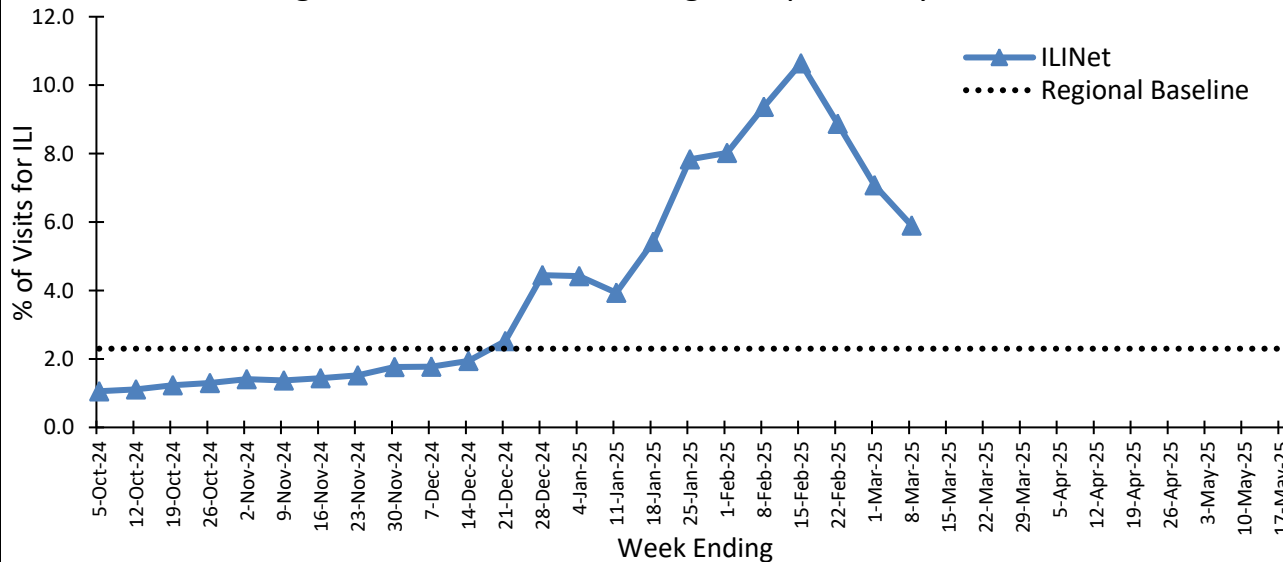
[‡]ILI is defined as fever (>100°F) and a cough and/or a sore throat.

Number of Reports and ILI % by Region during this time period:

	C	N	SE	SW
# of Reporters (295)	112	32	115	36
ILI %	4.8	10.0	6.3	6.9



Percentage of Visits for ILI in Michigan Reported by ILINet, 2024-2025



Note: ILINet monitors visits for ILI (fever and cough and/or sore throat) and may capture patient visits due to other respiratory pathogens that cause similar symptoms.

Michigan ILI Activity: 5.9% ↓

(Last week: 7.1%)

Regional Baseline*: 2.3%

A total of **8,897** patient visits due to ILI were reported out of **150,925** outpatient visits.

*Regional baseline is determined by calculating the mean percentage of patient visits due to ILI during non-influenza weeks for the previous three seasons and adding two standard deviations.

National Surveillance

In the United States, **4.3%** of outpatient visits were due to ILI (Last week: **4.9%**)

This is **above** the national baseline of 3.0%

Become an ILINET provider!

Contact Arianna Eaton at eatona4@michigan.gov

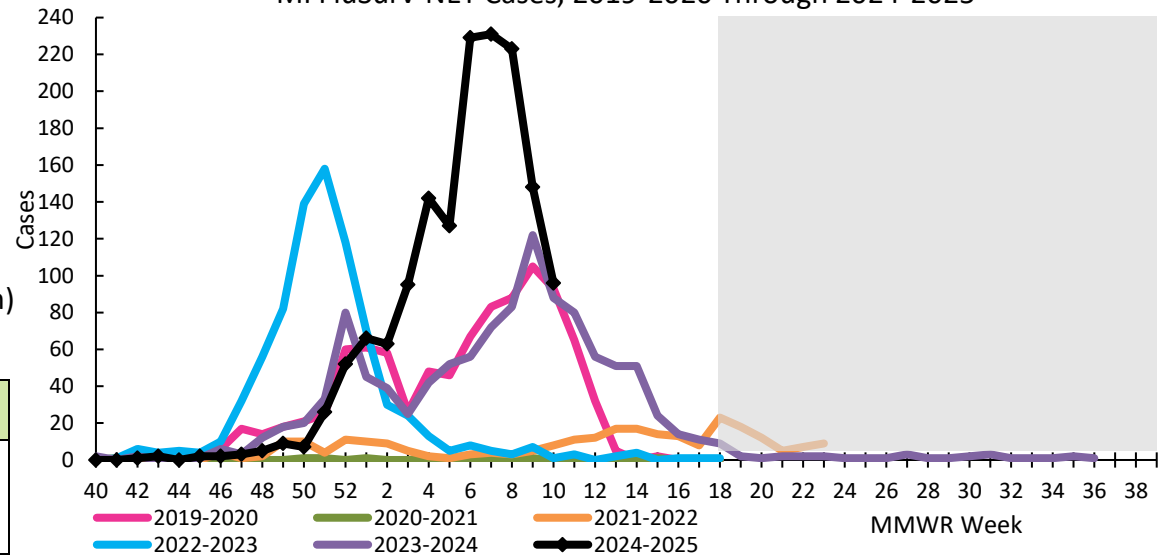
Influenza Hospitalization Surveillance Network (FluSurv-NET)

The CDC's Influenza Hospitalization Surveillance Network (FluSurv-NET) provides population-based rates of laboratory-confirmed influenza-associated hospitalizations from October 1st through April 30th each year. Michigan participates for Clinton, Eaton, Genesee, Ingham, and Washtenaw Counties. (Livingston County will be piloted during the 2024-2025 season)

of MI FSN cases reported for the 2024-2025 season:

	Pediatric	Adult	Total
Week 10 (Change from Previous Week)	10 (-11)	86 (-41)	96 (-52)
Cumulative Cases	159	1,370	1,529

MI FluSurv-NET Cases, 2019-2020 Through 2024-2025



Note: FSN was extended during the 2021-2022 season to Week 23 due to late season activity in 2022 and extended during the 2023-2024 season in response to the HPAI outbreak among dairy cattle
 Note: Livingston County was added as a pilot site for the 2024-2025 season

Influenza Sentinel Hospital Network (ISHN)

[ISHN](#) is a group of hospitals in Michigan that voluntarily report weekly aggregate counts of influenza hospitalizations by age group.

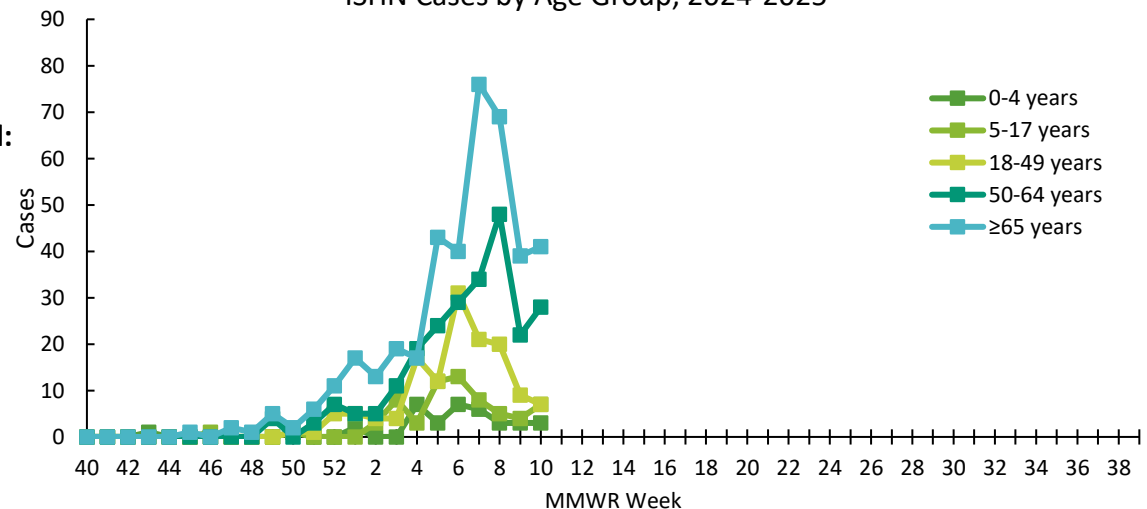
of Sites & Hospitalizations by Region during this time period:

Region	C	N	SE	SW	Total
Reporting Sites	4	1	0	5	10
Hospitalizations	18	11	0	57	86

Total # of Reported Hospitalizations for ISHN by Region:

Age Group	C	N	SE	SW	Total
0-4	0	0	0	36	36
5-17	0	0	0	65	65
18-49	17	5	0	115	137
50-64	66	17	0	156	239
65+	118	39	0	245	402
Total	201	61	0	617	879

ISHN Cases by Age Group, 2024-2025



If you'd like to join ISHN, please contact
 Val Tellez Nunez at telleznunezv@michigan.gov

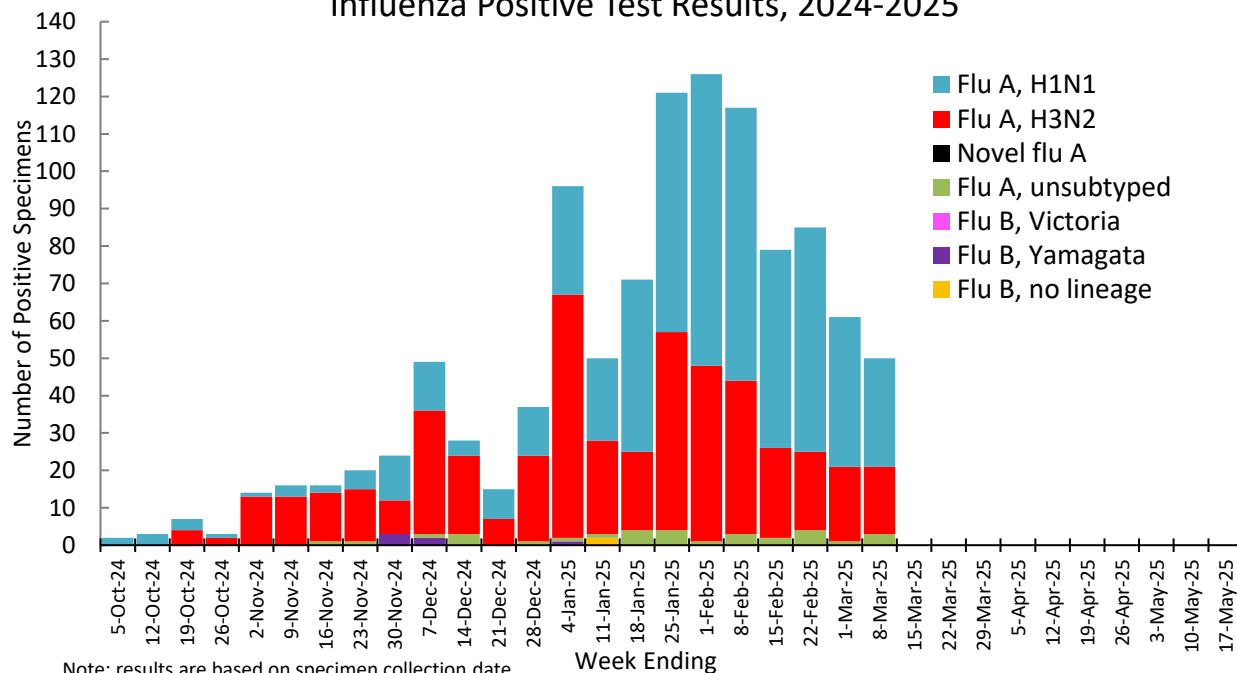
MDHHS Bureau of Laboratories (BOL) Virology Laboratory Data

There were **50** (18C, 2N, 12SE, 18SW) positive influenza results reported by the MDHHS Bureau of Laboratories (BOL) during this time period. Positive flu results for the 2024-2025 season are summarized below.

of Positive Influenza Virus Results by Region

	C	N	SE	SW	Total
Flu A H1N1	101	37	185	241	564
Flu A H3N2	115	9	185	178	487
Novel flu A*	0	0	0	0	0
Flu A unsubtype	5	1	7	18	31
Flu B Victoria	2	0	3	1	6
Flu B Yamagata	0	0	0	0	0
Flu B no lineage	0	0	2	0	2
Total	223	47	382	438	1,090

Influenza Positive Test Results, 2024-2025



Note: results are based on specimen collection date
 Novel influenza A result include: H5, H1N1v, H1N2v, H7N2v, H1v, H3v

Michigan Sentinel Clinical Lab Network

Respiratory Virus Data

Five (6) sentinel clinical labs (1SE, 1SW, 4C, 0N) reported for the week ending 3/8/2025.

Southeast Region		
Influenza A:	High ↓	↑ = Increase from previous week
Influenza B:	Low ↓	
SARS-CoV-2:	Low - elevated ↓	↓ = Decrease from previous week
Parainfluenza:	Low ↓	
RSV:	Slightly Elevated ↓	→ = Similar to previous week
Adenovirus:	Low ↓	
hMPV:	Low ↓	
Central Region		
Influenza A:	High - very high ↓	
Influenza B:	Low - moderate ↑	
SARS-CoV-2:	Low - slightly elevated ↑	
Parainfluenza:	Sporadic ↓	
RSV:	Moderate - high ↓	
Adenovirus:	Low ↓	
hMPV:	Low ↑	
Southwest Region		
Influenza A:	High - very high ↓	
Influenza B:	Low ↑	
SARS-CoV-2:	Low - elevated ↓	
Parainfluenza:	No activity ↓	
RSV:	Elevated - moderate ↓	
Adenovirus:	No activity ↓	
hMPV:	Low ↑	
North Region		
Influenza A:	No data available	
Influenza B:	No data available	
SARS-CoV-2:	No data available	
Parainfluenza:	No data available	
RSV:	No data available	
Adenovirus:	No data available	
hMPV:	No data available	

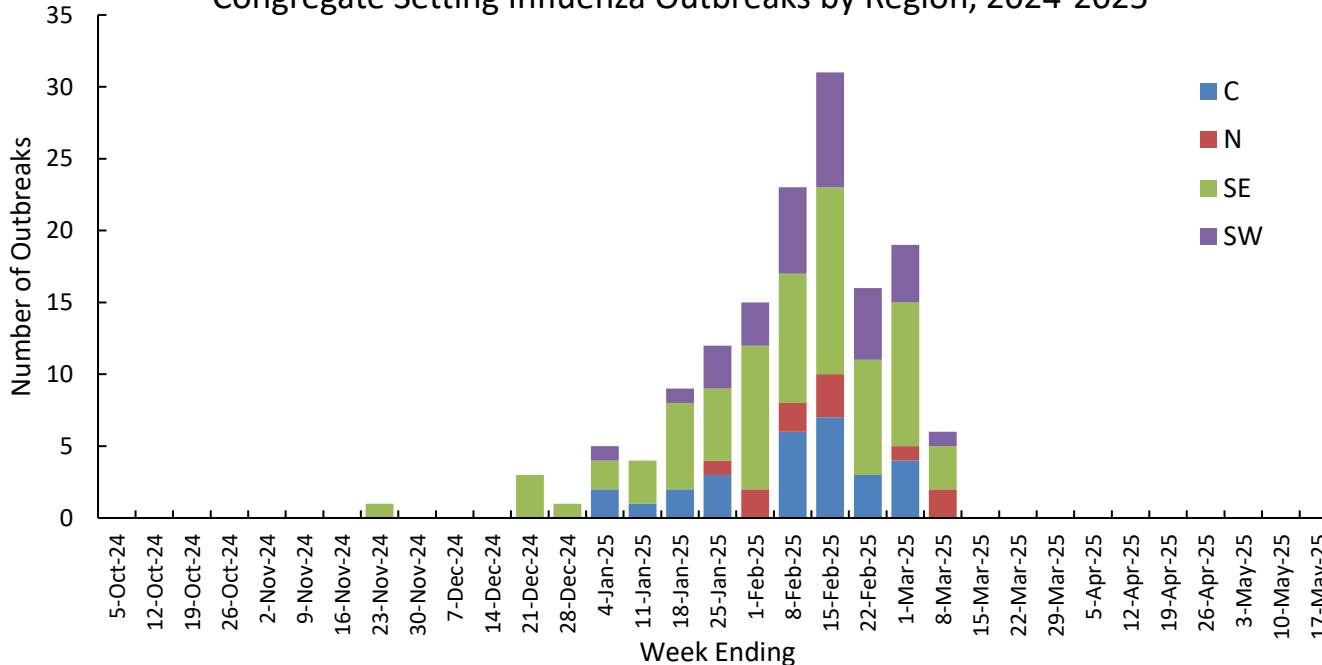
There were **6** (0C, 2N, 3SE, 1SW) confirmed influenza outbreaks reported to MDHHS during this time period. Influenza outbreaks for the 2024-2025 season are summarized below.

of Reported Influenza Outbreaks by Region

Facility Type	C	N	SE	SW	Total
Schools: K-12 & College	0	0	14	4	18
Long-term Care / Assisted Living Facility	26	10	51	22	109
Healthcare Facility	1	1	1	4	7
Daycare	1	0	4	1	6
Homeless Shelter	0	0	1	0	1
Correctional Facility	0	0	2	1	3
Other	0	0	1	0	1
Total	28	11	74	32	145

Note: Data are reported on outbreaks with laboratory confirmed influenza. Other non-influenza, non-COVID outbreaks, and ILI outbreaks without confirmatory influenza testing will not be reported in the table and graph.

Congregate Setting Influenza Outbreaks by Region, 2024-2025



Did you know?

Congregate setting outbreaks of viral respiratory illness are required to be reported to your local health department? See:

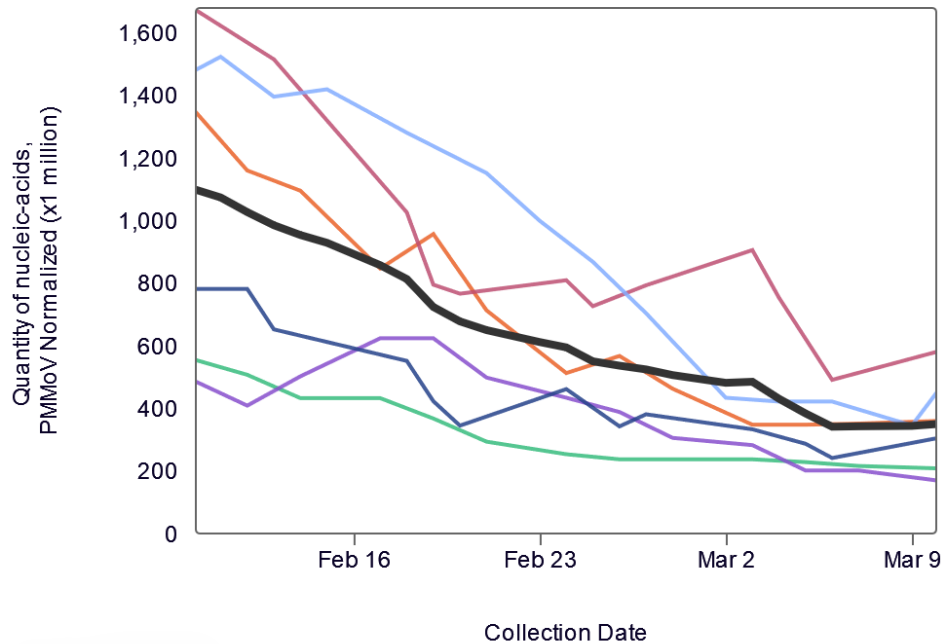
- Influenza Guidance for [Local Health Departments \(LHDs\)](#), [Healthcare Providers](#), and [Laboratories](#)

Outbreak Response Resources:

- [MDHHS Guidelines for Influenza and Respiratory Virus Outbreaks in Long-Term Care Facilities](#)
- [MDHHS Respiratory Virus Outbreaks in Nursing Homes Flow Diagram](#)
- [MDHHS Respiratory Illness Outbreak Response Tool for use in Skilled Nursing Facilities](#)
- [CDC Viral Respiratory Pathogens Toolkit for Nursing Homes](#)

For information on COVID-19 outbreaks, please visit the [Michigan Respiratory Virus Dashboard](#)

WastewaterSCAN Dashboard: Influenza A, Michigan (2/10/25 - 3/9/25)



- All Selected Locations
- Mt. Pleasant, MI (Mt. Pleasant WRRF)
- Ann Arbor, MI (City of Ann Arbor Wastewater Treatment Plant)
- Jenison, MI (Grandville Clean Water Plant)
- Warren, MI (City of Warren Wastewater Treatment Plant)
- Traverse City, MI (Traverse City Regional Waste Water Treatment Plant)
- Jackson, MI (Jackson Wastewater Treatment Plant)

Influenza News Blast

- [FDA makes flu vaccine recommendations after canceled VRBPAC, closed-door meeting \(Regulatory Focus\)](#)
- [Less than half of parents think they have accurate information about bird flu \(Michigan Medicine\)](#)
- [MDARD reports bird flu discovery in backyard flock. What Michigan residents should know \(Detroit Free Press\)](#)
- [Flu season has Michigan kids sicker with 'many, many' needing ventilation \(MLive\)](#)
- [5 years after Michigan's 1st COVID-19 case, health leaders offer fresh warnings \(Detroit Free Press\)](#)
- [NEW: Michigan State Medical Society Public Health Webinar – updates on seasonal flu, avian flu, and measles \(free to MSMS members\)](#)

Additional Resources

- [MDHHS Respiratory Virus Dashboard](#)
- [MDHHS Influenza Webpage](#)
- [MDHHS Bureau of Laboratories \(BOL\) Flu Webpage](#) and [Test Request Forms](#)
- [Immunization Action Coalition: Ask the Experts - Flu](#)
- [National Wastewater Surveillance System \(CDC\)](#)
- [CDC FluView](#)
- [Vaccine finder \(vaccines.gov\)](#)

View Michigan Flu Focus Report archives [here](#).

2024-2025 Influenza Season Preliminary Burden Estimates

The Centers for Disease Control and Prevention (CDC) have released [preliminary in-season burden estimates](#) for the 2024-2025 flu season.

Since October 1, 2024, CDC estimates that there have been between:

41 million – 71 million
flu illnesses

19 million – 32 million
flu medical visits

540,000 – 1.2 million
flu hospitalizations

23,000 – 120,000
flu deaths

Updated March 14, 2025

MDHHS Contributors

Bureau of Infectious Disease Prevention: A. Eaton, MPH, L. Leegwater, MPH, L. Reeg, MPH, S. Kim, MPH, V. Tellez Nunez, MPH

Bureau of Laboratories: K. Margulieux, PhD, V. Vavricka, MS