



# Michigan Flu Focus

Weekly Influenza Surveillance Report

May 8, 2026

Vol. 23; No. 31

Week Ending May 2, 2026 | WEEK 17

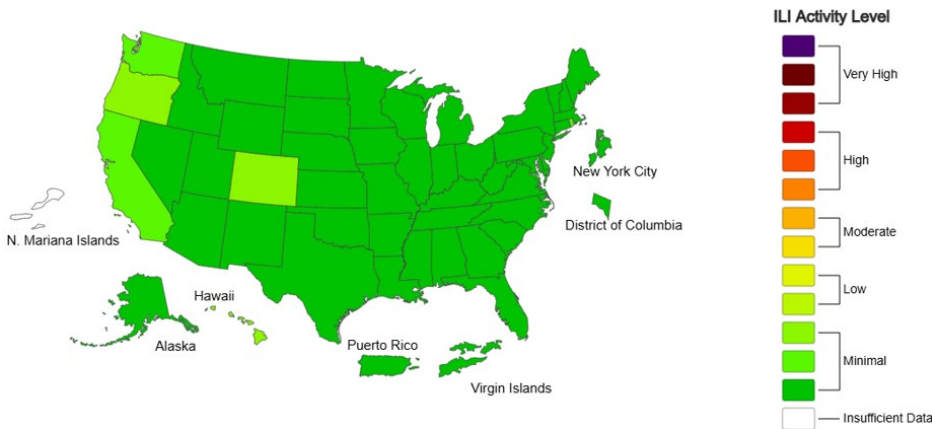
Editor: Sue Kim, MPH

*Data provided in this report are preliminary and will be updated as additional data are received*

### Outpatient Respiratory Illness Activity Map Determined by Data Reported to ILINet

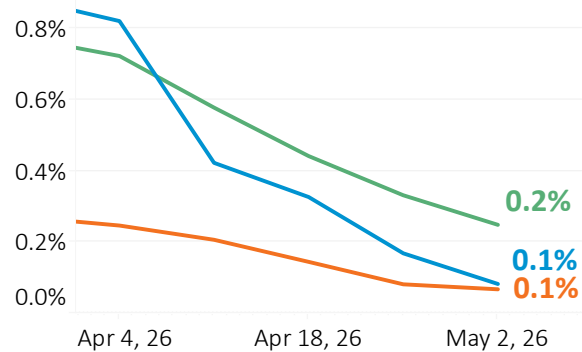
This system monitors visits for respiratory illness that includes fever plus a cough or sore throat, also referred to as ILI, not laboratory confirmed influenza and may capture patient visits due to other respiratory pathogens that cause similar symptoms.

2025-26 Influenza Season Week 17 ending May 02, 2026



Source: [CDC FluView](#) | [MDHHS Respiratory Disease Reports](#)

### Percent of Emergency Department Visits Associated with COVID-19, Influenza, and RSV



For the 2025-2026 respiratory season:

<b>27.0%</b> of Michiganders have received an <b>influenza</b> vaccine	<b>9.6%</b> of Michiganders have received a <b>COVID-19</b> vaccine
<b>34.9%</b> of Michiganders 0-7 months old have received an <b>RSV</b> antibody	<b>45.3%</b> of Michiganders +75 years old have received an <b>RSV</b> vaccine

## Influenza-associated Pediatric Mortality

Regional-level data on pediatric flu deaths of Michigan residents will be shared in the Michigan Flu Focus. Information on age group, sex, vaccination status or more specific geography will not be shared in order to protect the privacy of the children and their families.

As of **May 2nd**, a total of **158** influenza-associated pediatric deaths have been reported in the U.S. during the 2025–2026 flu season—**85%** among children who were not fully vaccinated against influenza.

*Michigan Pediatric Flu Deaths by Region, 2025-2026*

Region	C	N	SE	SW	Total
	3	1	4	1	9

## Updates of Interest

The Michigan Department of Health and Human Services (MDHHS) has confirmed one additional influenza-associated pediatric death in Michigan for the 2025–2026 season. The reported death involves a child from the Southeast Region and brings the current confirmed total to nine Michigan pediatric influenza-associated deaths for the 2025–2026 season.

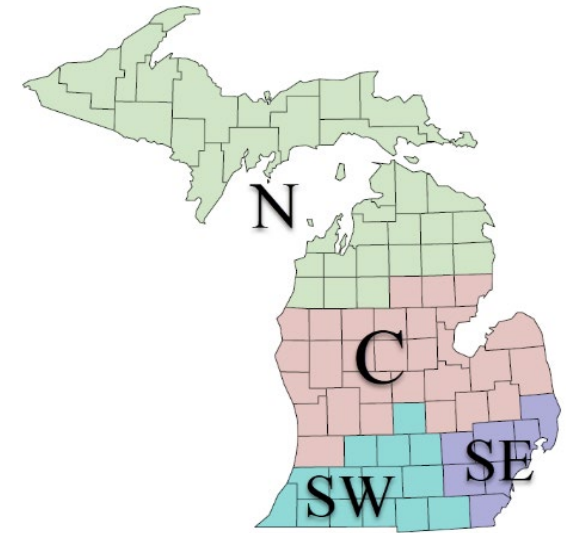
## U.S. Outpatient Influenza-like Illness Surveillance Network (ILINet)

Michigan participates in ILINet, a collaborative effort between the CDC, state, local health departments and volunteer sentinel clinicians as part of Michigan’s influenza surveillance. ILINet provides data on the total number of outpatient visits to health care providers seen for any reason and the number of those patients with influenza-like illness (ILI<sup>†</sup>). ILINet data is collected from a range of healthcare settings including family medicine, internal medicine and student health clinics. It also incorporates syndromic surveillance data submitted by urgent care and emergency departments through the Electronic Surveillance System for the Early Notification of Community-based Epidemics (ESSENCE).

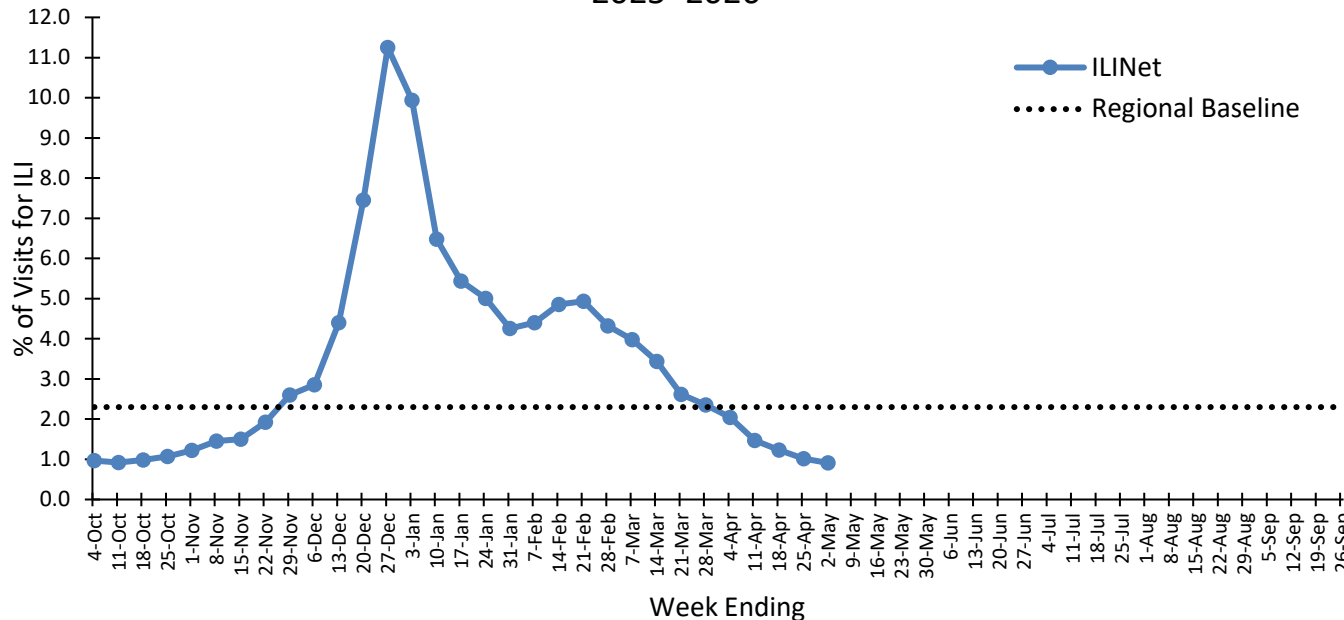
<sup>†</sup>ILI is defined as fever (>100°F) and a cough and/or a sore throat.

### # of Reports and ILI % by Region During this Time Period

	C	N	SE	SW
# of Reporters ( <b>255</b> )	77	31	113	34
ILI %	0.9	1.8	0.9	0.5



Percentage of Visits for ILI in Michigan Reported by ILINet, 2025–2026



Note: ILINet monitors visits for ILI (fever and cough and/or sore throat) and may capture patient visits due to other respiratory pathogens that cause similar symptoms.

**Michigan ILI Activity: 0.9%** ↓

(Last week: 1.0%)

Regional Baseline: 2.3%

A total of **995** patient visits due to ILI were reported out of **109,304** outpatient visits.

### National Surveillance

In the United States, **1.8%** of outpatient visits were due to ILI. This is **below** the national baseline of 3.1%.

**Become an ILINET provider!**

Contact Arianna Eaton at

[eatona4@michigan.gov](mailto:eatona4@michigan.gov)

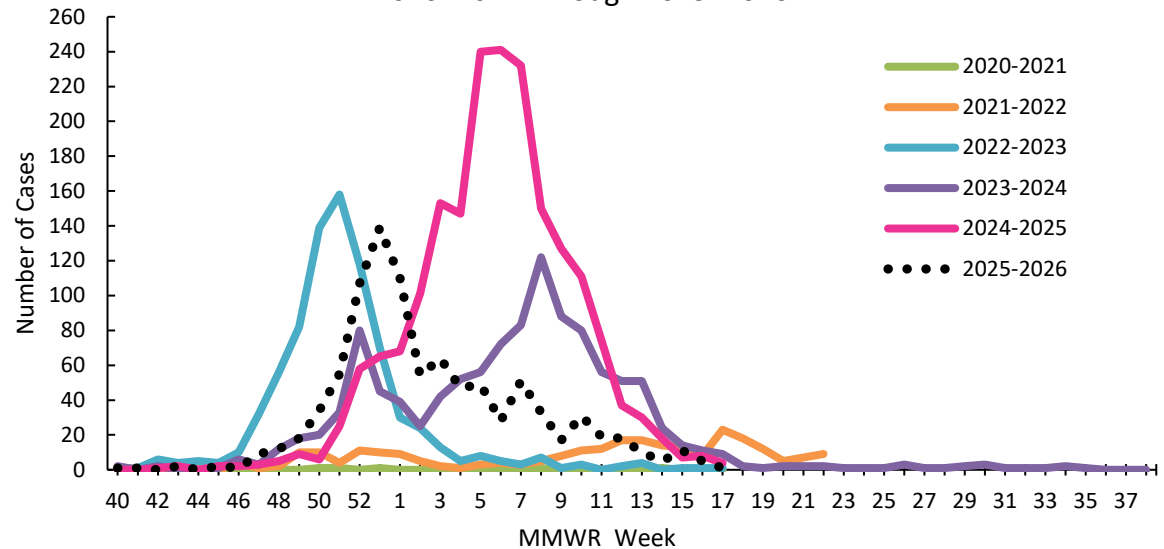
## Influenza Hospitalization Surveillance Network (FluSurv-NET)

The CDC's Influenza Hospitalization Surveillance Network (FluSurv-NET) provides population-based rates of laboratory-confirmed influenza-associated hospitalizations beginning October 1<sup>st</sup> of each year. Michigan participates for Clinton, Eaton, Genesee, Ingham, Livingston and Washtenaw Counties.

### # of MI FluSurv-NET Cases Reported During this Time Period

	Pediatric	Adult	Total
Cases (Change from Previous Week)	0 (+0)	1 (-4)	1 (-4)
Cumulative Cases	127	807	934

MI FluSurv-NET Cases by Season, 2020–2021 Through 2025–2026



## Michigan Influenza Hospital Admissions

Starting October 2024, acute care hospitals and critical access hospitals (representing 90% of the state) began reporting confirmed influenza cases among admitted patients.

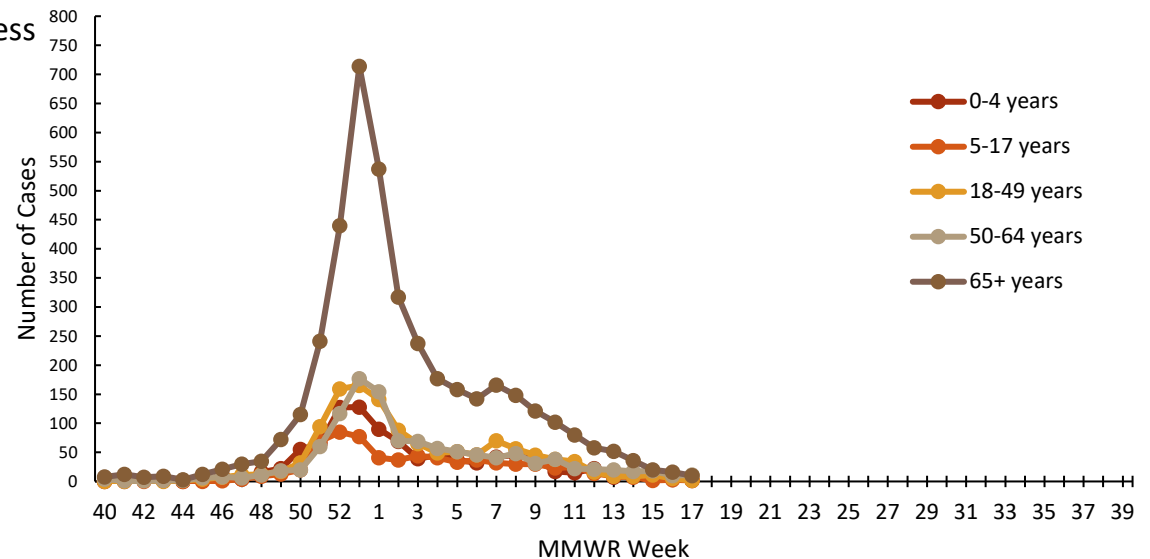
### # of Influenza Hospital Admissions Reported During this Time Period

Region	C	N	SE	SW	Total
Hospitalizations	10	3	13	1	27

### # of Influenza Hospital Admissions by Region

Age Group	C	N	SE	SW	Total
0-4 years	120	13	777	50	960
5-17 years	98	8	494	90	690
18-49 years	290	61	699	190	1240
50-64 years	315	67	612	163	1157
65+ years	1252	261	2006	577	4096
<b>Total</b>	<b>2075</b>	<b>410</b>	<b>4588</b>	<b>1070</b>	<b>8143</b>

Michigan Influenza Hospital Admissions by Week, 2025-2026



If you have any questions about this data, please contact

[MDHHS-CHECC-EMResource@michigan.gov](mailto:MDHHS-CHECC-EMResource@michigan.gov)

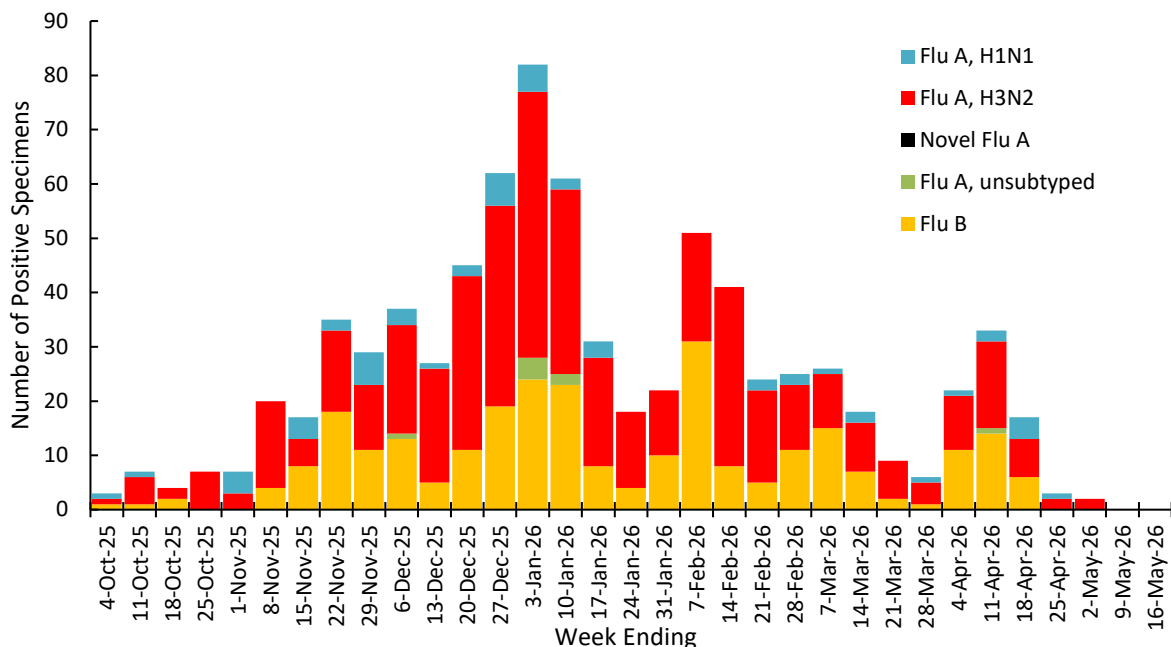
## MDHHS Bureau of Laboratories (BOL) Virology Laboratory Data

There were 2 (1C, 0N, 1SE, 0SW) positive influenza results reported by the MDHHS Bureau of Laboratories (BOL) during this time period. Positive flu results for the 2025–2026 season are summarized below.

### # of Positive Influenza Virus Results by Region

	C	N	SE	SW	Total
Flu A H1N1	16	1	23	16	56
Flu A H3N2	188	19	142	105	454
Novel flu A*	0	0	0	0	0
Flu A unsubtype	1	1	2	4	8
Flu B**	66	2	136	69	273
<b>Total</b>	<b>271</b>	<b>23</b>	<b>303</b>	<b>194</b>	<b>791</b>

Influenza Positive Test Results, 2025-2026



Note: results are based on specimen collection date

\*Novel influenza A results include: H5, H1N1v, H1N2v, H7N2v, H1v, H3v

\*\*Flu B specimens will no longer be genotyped at MDHHS BOL but will continue being sent to CDC for surveillance.

## Michigan Sentinel Clinical Lab Network Respiratory Virus Data

Eleven (11) sentinel clinical labs (4C, 1N, 1SE, 5SW) reported during this time period.

### Central Region

Influenza A:	Low ↑	↑ = Increase from previous week ↓ = Decrease from previous week → = Similar to previous week
Influenza B:	Low ↓	
SARS-CoV-2:	Sporadic - low ↑	
Parainfluenza:	Low - slightly elevated ↑	
RSV:	Low - elevated ↓	
Adenovirus:	Low ↑	
hMPV:	Low - slightly elevated ↓	

### North Region

Influenza A:	Sporadic →
Influenza B:	No activity ↓
SARS-CoV-2:	Sporadic - low ↑
Parainfluenza:	No activity →
RSV:	Low ↓
Adenovirus:	No activity ↓
hMPV:	No activity →

### Southeast Region

Influenza A:	Sporadic →
Influenza B:	No activity ↓
SARS-CoV-2:	Sporadic - low ↑
Parainfluenza:	Low ↑
RSV:	Low - slightly elevated ↓
Adenovirus:	Low ↑
hMPV:	Low ↓

### Southwest Region

Influenza A:	No activity →
Influenza B:	Sporadic →
SARS-CoV-2:	Sporadic - low →
Parainfluenza:	Sporadic - low ↑
RSV:	Low - slightly elevated ↑
Adenovirus:	Sporadic ↑
hMPV:	Sporadic ↑

## Congregate Setting Influenza Outbreaks

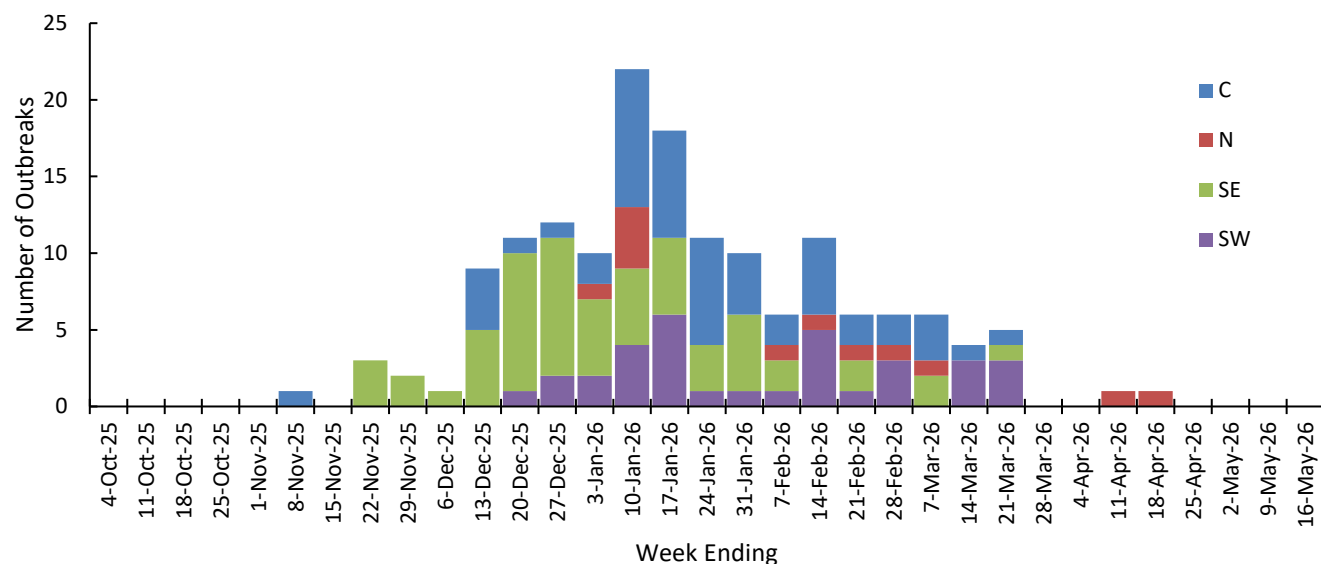
There were **0** confirmed influenza outbreaks reported to MDHHS during this time period. Influenza outbreaks for the 2025–2026 season are summarized below.

# of Reported Influenza Outbreaks by Region

Facility Type	C	N	SE	SW	Total
Schools: K-12 & College	7	1	16	3	<b>27</b>
Long-term Care / Assisted Living Facility	40	10	35	29	<b>114</b>
Healthcare Facility	3	1	2	1	<b>7</b>
Daycare	1	0	4	0	<b>5</b>
Homeless Shelter	0	0	0	0	<b>0</b>
Correctional Facility	0	0	2	0	<b>2</b>
Other	1	0	0	0	<b>1</b>
<b>Total</b>	<b>52</b>	<b>12</b>	<b>59</b>	<b>33</b>	<b>156</b>

Note: Data are reported on outbreaks with laboratory-confirmed influenza.

Influenza Outbreaks in Congregate Settings by Region, 2025–2026



### Did you know?

Congregate setting outbreaks of viral respiratory illness are **required** to be reported to your local health department.

Outbreak Response Resources:

- [MDHHS Guidelines for Influenza and Respiratory Virus Outbreaks in Long-Term Care Facilities](#)
- [MDHHS Respiratory Illness Outbreak Response Tool for use in Skilled Nursing Facilities](#)
- [CDC Viral Respiratory Pathogens Toolkit for Nursing Homes](#)

For more information on outbreaks please visit the [Michigan Respiratory Virus Dashboard](#).

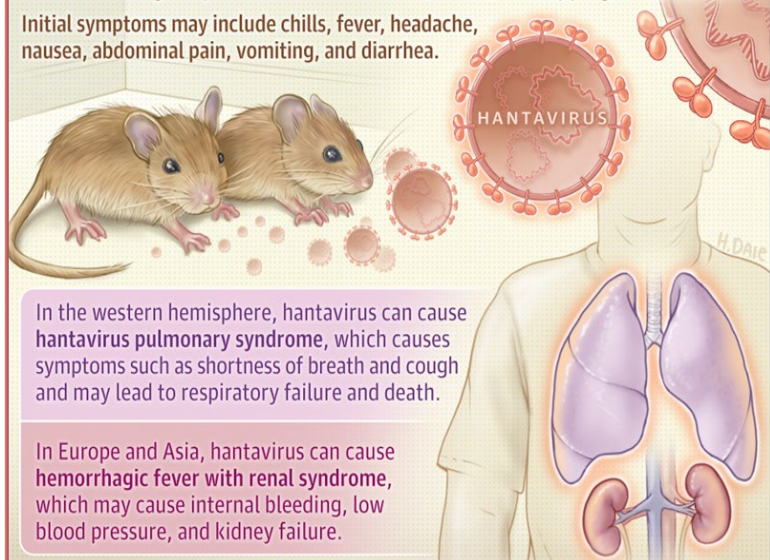
## How worried do we need to be about hantavirus, the deadly disease that starts with flu-like symptoms?

Dr. Emily Abdoler, clinical associate professor of medicine with U-M Medical School and an infectious disease physician with U-M Health, diagnosed a case of hantavirus pulmonary syndrome in a patient in Washtenaw County back in 2021.

**Her message to the public is to not panic and to acknowledge that public health is vital to managing the ever-present threat posed by communicable diseases.**

Hantavirus is an infection caused by a group of viruses that spread to humans through exposure to infected urine, saliva, or droppings from rodents.

Initial symptoms may include chills, fever, headache, nausea, abdominal pain, vomiting, and diarrhea.



In the western hemisphere, hantavirus can cause hantavirus pulmonary syndrome, which causes symptoms such as shortness of breath and cough and may lead to respiratory failure and death.

In Europe and Asia, hantavirus can cause hemorrhagic fever with renal syndrome, which may cause internal bleeding, low blood pressure, and kidney failure.

Abdoler EA, Malani PN. What Is Hantavirus?

JAMA. 2025;334(1):98. doi:[10.1001/jama.2025.5014](https://doi.org/10.1001/jama.2025.5014)

### More from Dr. Abdoler

Hantavirus: Do we need to worry about this rare infection?

([Michigan Medicine](#))

Hantavirus may have spread person-to-person on cruise ship – here's what to know

([Click on Detroit](#))

### Influenza News Blast

- What's Going Around in Metro Detroit: Spring allergies, asthma flare-ups, colds, stomach viruses ([Click on Detroit](#))
- Bird Flu Strikes Again: Second Indiana Duck Farm Outbreak in Days Sparks Emergency Controls ([Hoosier Ag Today](#))
- Federal, state officials relax testing for avian flu on dairy farms ([WPR](#))
- How a poultry farmer is keeping bird flu from spreading ([PBS](#))
- Moderna's mRNA flu vaccine outperforms standard shot in late-stage trial ([Reuters](#))
- Adjuvanted and high-dose flu vaccines show similar protection in older adults ([CIDRAP](#))
- How Effective Are Flu Shots? ([Britannica](#))
- Ultrasound waves rupture COVID-19 and flu viruses without damaging cells ([Phys.org](#))
- Advancing Prevention in a Complex Respiratory Season ([NFID](#))
- Indian scientists predict how bird flu could spread to humans ([BBC](#))
- Is Covid still a thing? The risk has waned, but not vanished ([STAT](#))

### Additional Resources

- [MDHHS Influenza Webpage](#) and [Influenza Surveillance in MI](#).
- **NEW!** [MDHHS Seasonal Respiratory Viruses Surveillance and Immunizations Dashboard](#).
- [MDHHS Bureau of Laboratories \(BOL\) Webpage](#).
  - [Test Request Forms](#).
- [Immunization Action Coalition: Ask the Experts - Flu](#).
- [CDC FluView Report](#).

View Michigan Flu Focus Report archives [here](#).

## MDHHS Contributors

**Bureau of Infectious Disease Prevention:** A. Eaton, MPH, S. Kim, MPH, L. Leegwater, MPH, V. Tellez Nunez, MPH, E. Urlaub, MPH, S. Rojewski, MPH

**Bureau of Laboratories:** K. Jacob, PhD, K. Margulieux, PhD