



Michigan Flu Focus

Weekly Influenza Surveillance Report

September 13, 2024

Vol. 20; No. 37

Week Ending September 7, 2024 | WEEK 36

Editor: Sue Kim

Editor email: KimS2@michigan.gov

Michigan 2023-2024 Season Overview

Outbreaks – **87** (31C, 10N, 22SE, 24SW) influenza outbreaks were reported during the 2023-2024 season.

Sentinel Provider Surveillance (ILINet) – Michigan's ILI activity had 2 distinct peaks: first at **4.9%** during Week 52 and the second at **6.0%** during Week 9.

Laboratory – **962** flu positive results (496 Influenza A/H1N1, 243 Influenza A/H3, 223 Influenza B) were reported by the MDHHS Bureau of Laboratories.

Hospitalizations – **1,125** (147 pediatric, 978 adult) flu hospitalizations were reported in the catchment area since October 1st, 2023.

Pediatric flu deaths – **8** pediatric flu deaths have been reported in MI for the 2023-2024 season.

Updates of Interest

On September 9, 2024, the Michigan Department of Agriculture and Rural Development (MDARD) announced the [detection of highly pathogenic avian influenza \(HPAI\) in a dairy herd from Shiawassee County](#), bringing the total number of affected dairy herds in Michigan to 29.

For the HPAI updates in MI, visit the [MDARD Avian Flu Website](#).

Novel Influenza A Viruses

Nationally, **21** human infections with novel influenza A viruses were reported for the 2023-2024 season.

- 1 H1N1v (OH)
- 4 H1N2v (PA)
- 2 H3N2v (1 MI, 1 CO)
- 14 H5N1 (1 TX, 2 MI, 1 MO, 10 CO)

For more info, visit the [CDC FluView Interactive](#)

Highly Pathogenic Avian Influenza (HPAI)

Please see the [MDHHS Highly Pathogenic Avian Influenza \(HPAI\) Evaluation and Monitoring Protocol](#) for guidance on appropriate human health measures in the event that people are exposed to infected or dead birds or livestock due to HPAI.

For the current status of HPAI in Michigan, please visit the [MDARD Avian Flu Website](#).

Swine Variant Influenza

Fair season is here! The MDHHS [Swine Variant Influenza Toolkit](#) and [Templates](#) will help LHDs in planning for and responding to suspected influenza outbreaks associated with swine at agricultural fairs and exhibits.

Flu Bytes

Save the date!

The MDHHS [2024 Fall Immunization Conference](#) is now open for registration. The event will be held over Zoom on [November 7th from 8:30am to 3:30pm](#). We will be offering a jam-packed agenda that will include CDC, MDHHS, and guest speakers.

The registration fee for conference attendees is **\$50 per person**. Registration will close [November 4th at 5:00pm](#). **Register here:** events.anr.msu.edu/Fallconference2024

The goal is to update health care providers on immunization issues that affect people of all ages. The conference will provide participants with a variety of practice-management tools, techniques, and information that will help assure that all their patients are fully immunized.

This conference is appropriate for a range of health care providers, medical and nursing students, public health staff and anyone interested in learning more about current immunization practices in Michigan.

Continuing Education for physicians, nurses, pharmacists, and medical assistants have been applied for. A Certificate of Attendance will be available for all other attendees.

For additional questions, please contact checcimms@michigan.gov

Congregate Setting Respiratory Virus Outbreaks

There were **0** influenza outbreaks reported to MDHHS during Week 36. Respiratory virus outbreaks for the 2024 summer season are summarized below.

of Congregate Setting Outbreaks by Region

Facility Type	C	N	SE	SW	Summer 2024 Total	2023-2024 Season Total
Schools: K-12 & College	0	0	0	0	0	7
Long-term Care / Assisted Living Facility	0	0	2	0	2	77
Healthcare Facility	0	0	0	0	0	1
Daycare	0	0	0	0	0	0
Homeless Shelter	0	0	0	0	0	0
Correctional Facility	0	0	0	0	0	2
Other	0	0	0	0	0	0
Summer 2024 Total	0	0	2	0	2	
2023-2024 Season Total	31	10	22	24		87

Note: Data are reported on laboratory confirmed influenza outbreaks. Non-flu, non-COVID outbreaks and ILI outbreaks without confirmatory influenza testing are not reported above.

Did you know?

Congregate setting outbreaks of viral respiratory illnesses are required to be reported to your local health department? See:

- [Influenza Guidance for Healthcare Providers](#)
- [Guidelines for Influenza and Respiratory Virus Outbreaks in Long-Term Care Facilities](#)

U.S. Outpatient Influenza-like Illness Surveillance Network (ILINet)

During the 2023-2024 influenza season, Michigan ILI activity had 2 distinct peaks: the first at **4.9%** during **Week 52** (Week Ending December 30, 2023) and the second at **6.0%** during **Week 9** (Week Ending March 2, 2024).

Number of Reports and ILI % by Region in Michigan during Week 36:

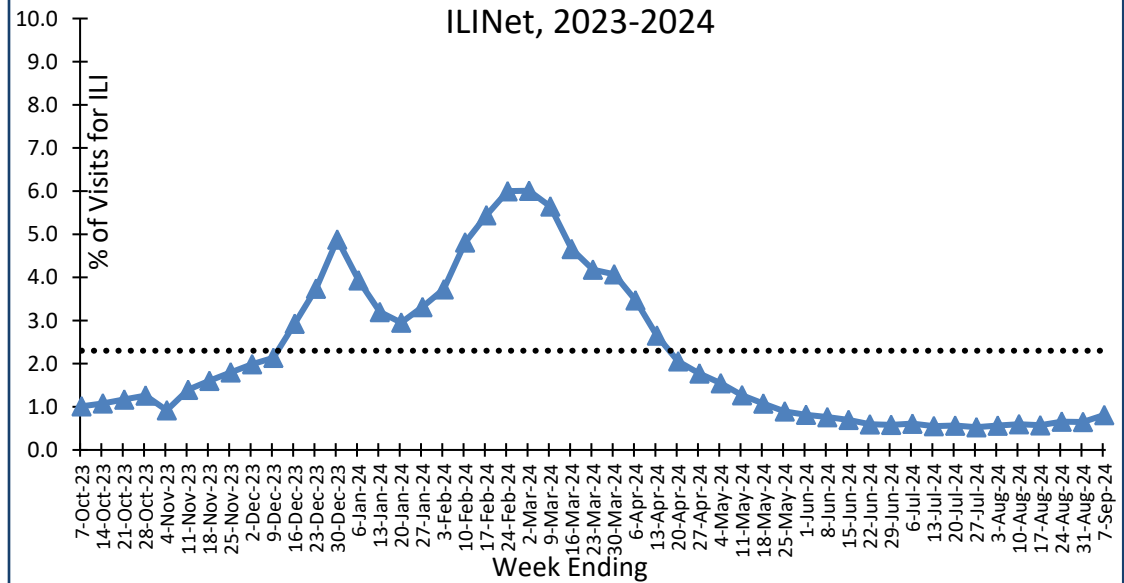
Region	C	N	SE	SW
No. of Reporters, Total (278)	111	30	103	34
ILI %	0.5	1.9	1.0	0.8

Data is provisional and may change as additional results are reported.

Michigan ILI Activity: 0.8% (Last Week: 0.5%) A total of **986** patient visits due to ILI were reported out of **121,616** outpatient visits during Week 36.

*Regional baseline is developed by calculating the mean percentage of patient visits for ILI during non-influenza weeks for the previous three seasons and adding two standard deviations

Percentage of Visits for ILI in Michigan Reported by ILINet, 2023-2024



Note: ILINet monitors visits for ILI (fever and cough and/or sore throat) and may capture patient visits due to other respiratory pathogens that cause similar symptoms.

Become an ILINET provider!

Contact Faria Farin at FarinF1@michigan.gov

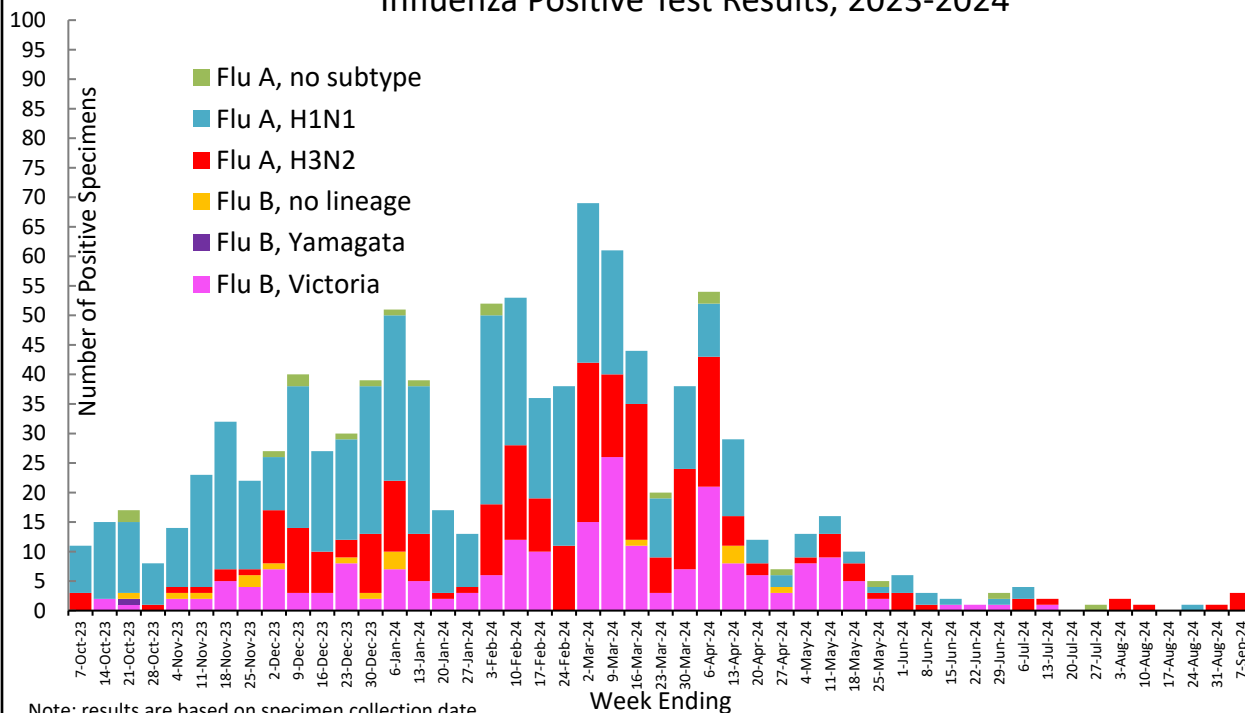
MDHHS Laboratory Data

There were **3** (1C, 0N, 0SE, 2SW) positive influenza results reported by the MDHHS Bureau of Laboratories (BOL) during this time period.

of Positive Influenza Results by Region

Flu Type, Subtype	C	N	SE	SW	Summer 2024 Total	2023-2024 Flu Season Total
Flu A, H1N1	3	0	3	5	11	496
Flu A, H3N2	4	0	2	9	15	243
Flu B	1	0	2	3	6	223
Total	8	0	7	17	32	
2023-2024 Total	317	19	329	297		962

Influenza Positive Test Results, 2023-2024



Note: results are based on specimen collection date

Influenza B lineage data will be reported based on MDHHS BOL testing runs and will be backtracked into this graph

Two influenza B/Yamagata results were detected and associated with the LAIV (live, attenuated influenza vaccine) or nasal spray vaccine

Michigan Sentinel Clinical Lab Network Respiratory Virus Data

Three (**3**) sentinel clinical labs (1SE, 1SW, 1C, 0N) reported for the week ending 9/7/24.

	Southeast Region	Central Region
Influenza A:	Sporadic - low	No activity
Influenza B:	No activity	No activity
Parainfluenza:	Sporadic	Sporadic - low
RSV:	Sporadic - low	Sporadic - low
Adenovirus:	Sporadic - low	Sporadic - low
hMPV:	Sporadic - low	Sporadic - low
	Southwest Region	North Region
Influenza A:	Sporadic - low	No data available
Influenza B:	No activity	No data available
Parainfluenza:	No activity	No data available
RSV:	No activity	No data available
Adenovirus:	Sporadic	No data available
hMPV:	No activity	No data available

National Respiratory and Enteric Virus Surveillance System (NREVSS)

The National Respiratory and Enteric Virus Surveillance System (NREVSS) is a laboratory-based system that monitors temporal and geographic circulation patterns (patterns occurring in time and place) of various viruses. Participating U.S. laboratories voluntarily report the total number of weekly aggregate tests performed and the weekly aggregate positive tests.

NEW! [NREVSS Dashboard](#)

NREVSS monitors the following respiratory viruses:

- SARS-CoV-2
- RSV
- Influenza
- Parainfluenza (1-4)
- Human metapneumovirus
- Rhinovirus/enterovirus
- Adenovirus
- Human coronaviruses

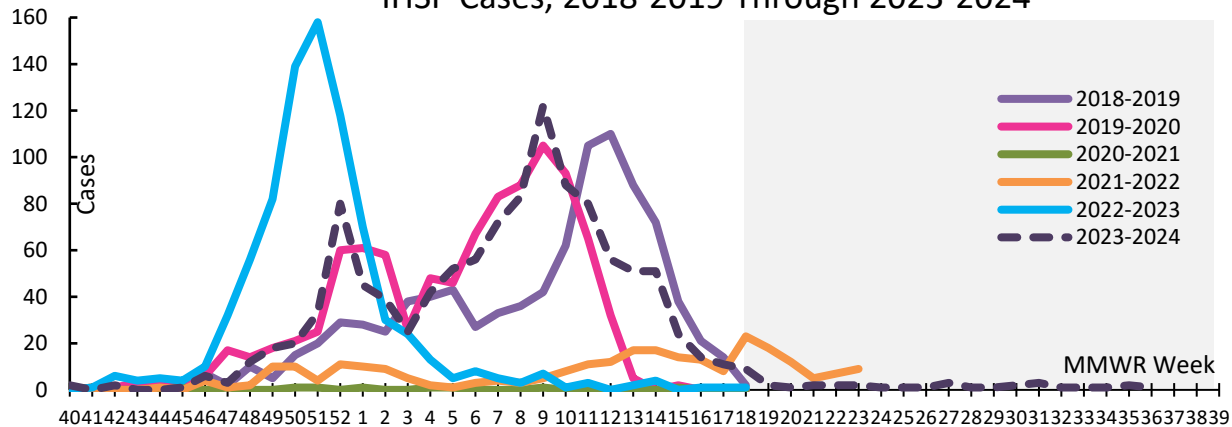
Influenza Hospitalization Surveillance Project (IHSP)

The CDC's Influenza Hospitalization Surveillance Network (FluSurv-NET) provides population-based rates of laboratory-confirmed influenza-associated hospitalizations from October 1st to April 30th each year. Michigan participates in FluSurv-NET for Clinton, Eaton, Genesee, Ingham, and Washtenaw Counties.

There was **1 (0 pediatric, 1 adult)** hospitalization reported during this time period.

Since October 1st, **1,125 (147 pediatric, 978 adult)** hospitalizations were reported for the 2023-2024 season.

IHSP Cases, 2018-2019 Through 2023-2024



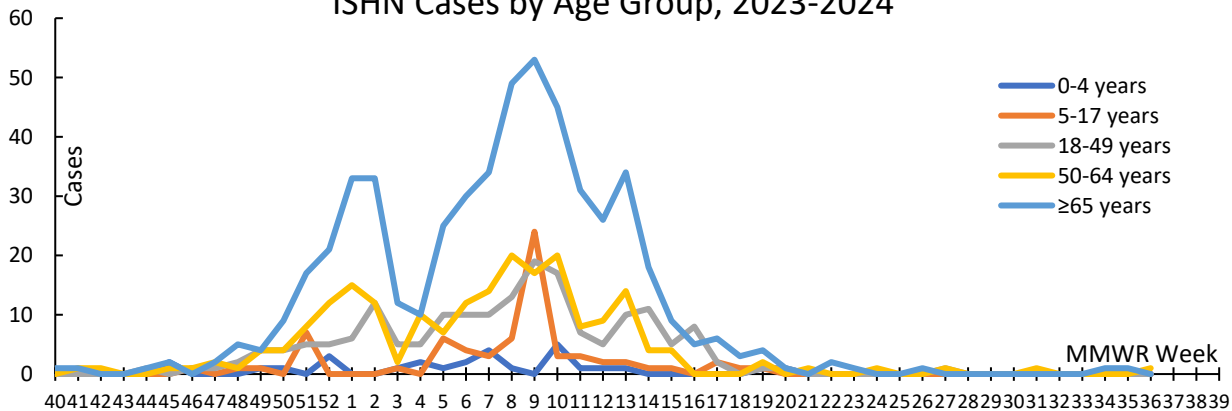
Influenza Sentinel Hospital Network (ISHN)

ISHN is a group of hospitals in Michigan that report weekly aggregates of flu hospitalizations by age group.

There was **1 hospitalization (0C, 0N, 0SE, 1SW)** reported during this time period.

Since October 1st, **1,014 (98 pediatric, 916 adult)** hospitalizations were reported for the 2023-2024 season.

ISHN Cases by Age Group, 2023-2024



Mortality Surveillance

Pneumonia & Influenza (P&I) Mortality Surveillance

Michigan Department of Health and Human Services Vital Records and Health Statistics provides pneumonia & influenza mortality data based on death certificates.

Please visit the [Michigan Mortality Statistics](#) webpage for more info.

Influenza-associated Pediatric Mortality

Eight (8) pediatric flu deaths have been confirmed by MDHHS for the 2023-2024 influenza season.

Nationally, **199** influenza-associated pediatric deaths have been reported for the 2023-2024 influenza season.

Total influenza-associated pediatric deaths in the U.S. and in Michigan by season are listed in the table below.

	2019-20	2020-21	2021-22	2022-23	2023-24
U.S. Total <small>Source: CDC FluView</small>	199	1	49	187	199
MI Total	6	0	1	8	8

Pediatric deaths due to influenza are required to be reported in Michigan. Please see:

- [Influenza-Related Pediatric Mortality Investigation and Reporting](#)

Additional Resources

- [MDHHS Influenza Webpage](#) and [Influenza Surveillance in MI](#)
- [MDHHS Flu Vaccination Dashboard](#)
- [MDHHS Bureau of Laboratories \(BOL\) Webpage](#) and [Test Request Forms](#)
- [Preliminary in-season burden estimates for 2022-2023 season](#)
- [Immunization Action Coalition: Ask the Experts - Flu](#)
- [CDC Healthcare Professionals Flu Toolkit](#)
- [CDC FluView Weekly Report](#)

View Michigan Flu Focus Report archives [here](#).

MDHHS Contributors

Bureau of Infectious Disease Prevention: A. Eaton, MPH, L. Leegwater, MPH, L. Reeg, MPH, S. Kim, MPH, V. Tellez Nunez, MPH

Bureau of Laboratories: K. Margulieux, PhD, V. Vavricka, MS