



Michigan Flu Focus

Weekly Influenza Surveillance Report



Editor: Sue Kim, MPH

Editor Email: KimS2@michigan.gov

March 15, 2019

Vol. 16; No.23

Week Ending March 9, 2019 | WEEK 10

Michigan Influenza Activity

No Activity
Sporadic
Local
Regional
Widespread

*Clicking on the current activity level will direct you to the CDC webpage defining each activity level for the geographic spread of influenza

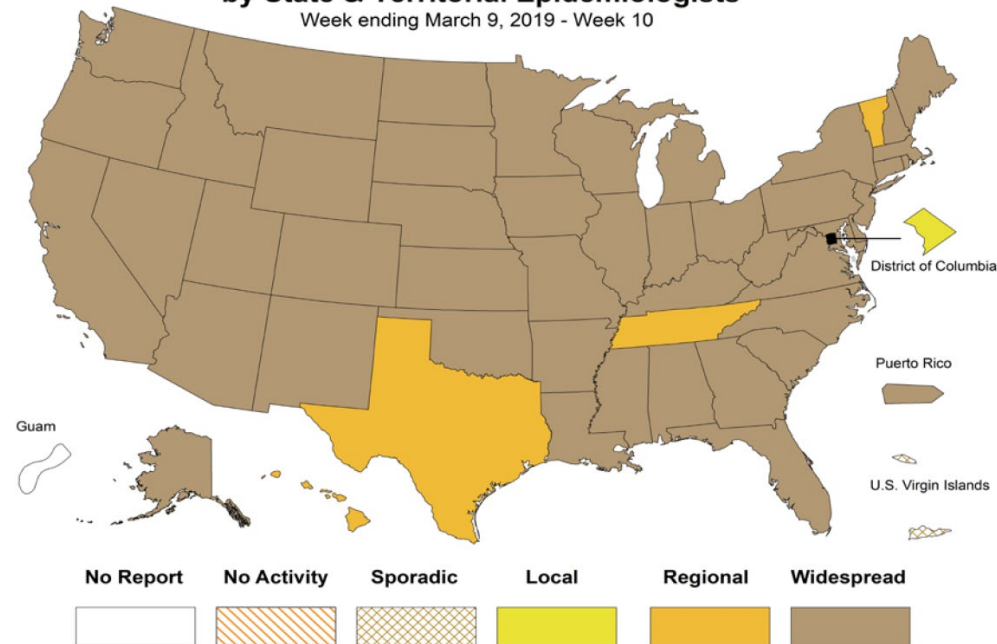
Updates of Interest

The WHO has released a Global Influenza Strategy for 2019-2030 aimed at protecting people in all countries from the threat of influenza. The goal of the strategy is to prevent seasonal influenza, control the spread of influenza from animals to humans, and prepare for the next influenza pandemic. Please see the following link to the WHO news release for more details.

Link: <https://www.who.int/news-room/detail/11-03-2019-who-launches-new-global-influenza-strategy>

Weekly Influenza Activity Estimates Reported by State & Territorial Epidemiologists*

Week ending March 9, 2019 - Week 10



Source: CDC FluView

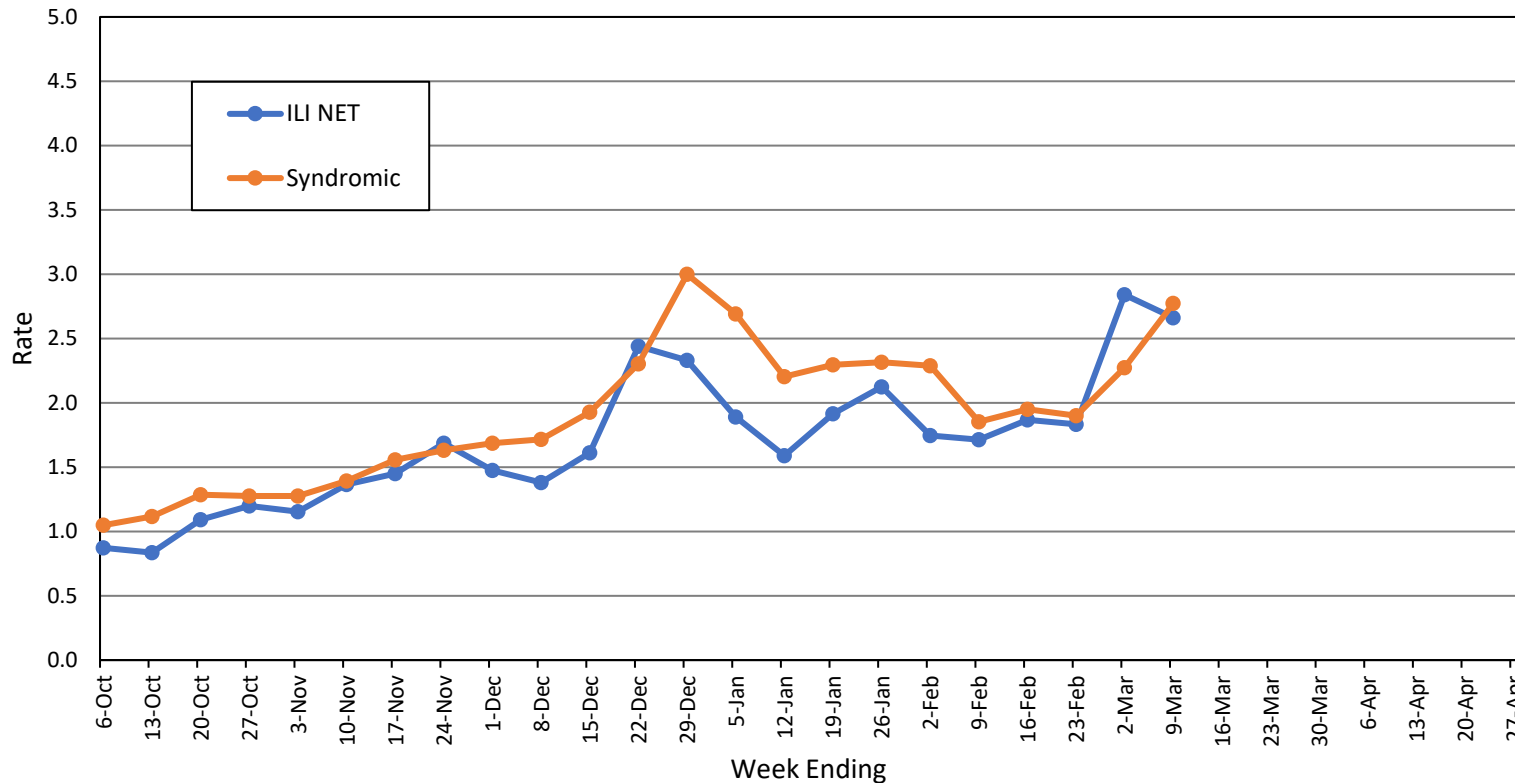
Influenza-associated Pediatric Mortality

One (1) pediatric influenza (A/H1N1-09) death has been confirmed by MDHHS for the 2018-2019 flu season. Nationally, 68 influenza-associated pediatric deaths have been reported thus far for the 2018-2019 flu season.

- Number of reports by region: 36 total [C(12), N(3), SE(15), SW(6)]
- Proportion of visits due to ILI: ↓ 2.7% (regional baseline*: 1.8%)
- A total of 368 patient visits due to ILI were reported out of 13,832 office visits

*Regional baseline is developed by calculating the mean percentage of patient visits for ILI during non-influenza weeks for the previous three seasons and adding two standard deviations.

MI Statewide ILI NET and Syndromic Surveillance Rates, 2018-2019



National Surveillance

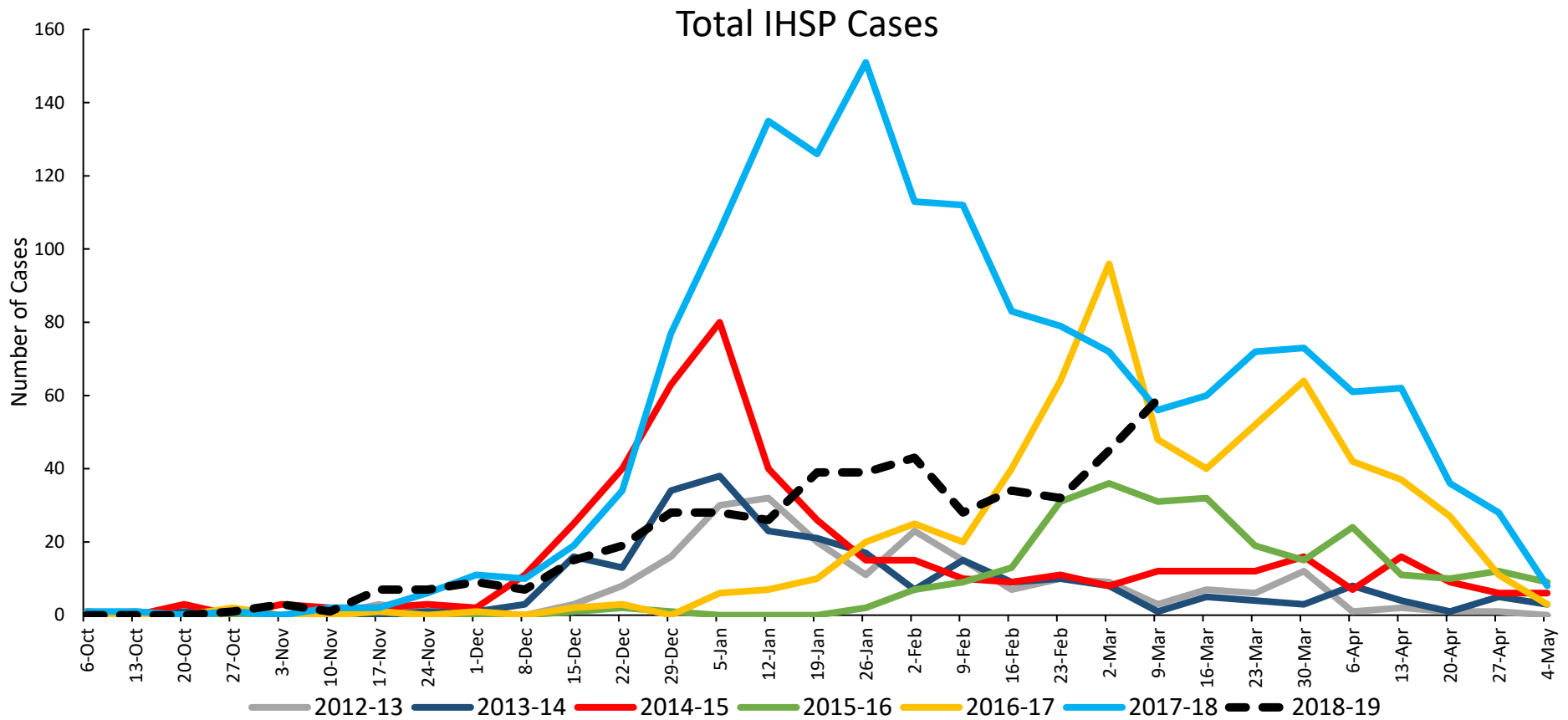
In the United States, 4.5% of outpatient visits were due to influenza-like illness (ILI), which is above the national baseline of 2.2%.

Become a sentinel provider!

Contact Shelly Doeblner at DoeblerM@michigan.gov

Influenza Hospitalization Surveillance Project

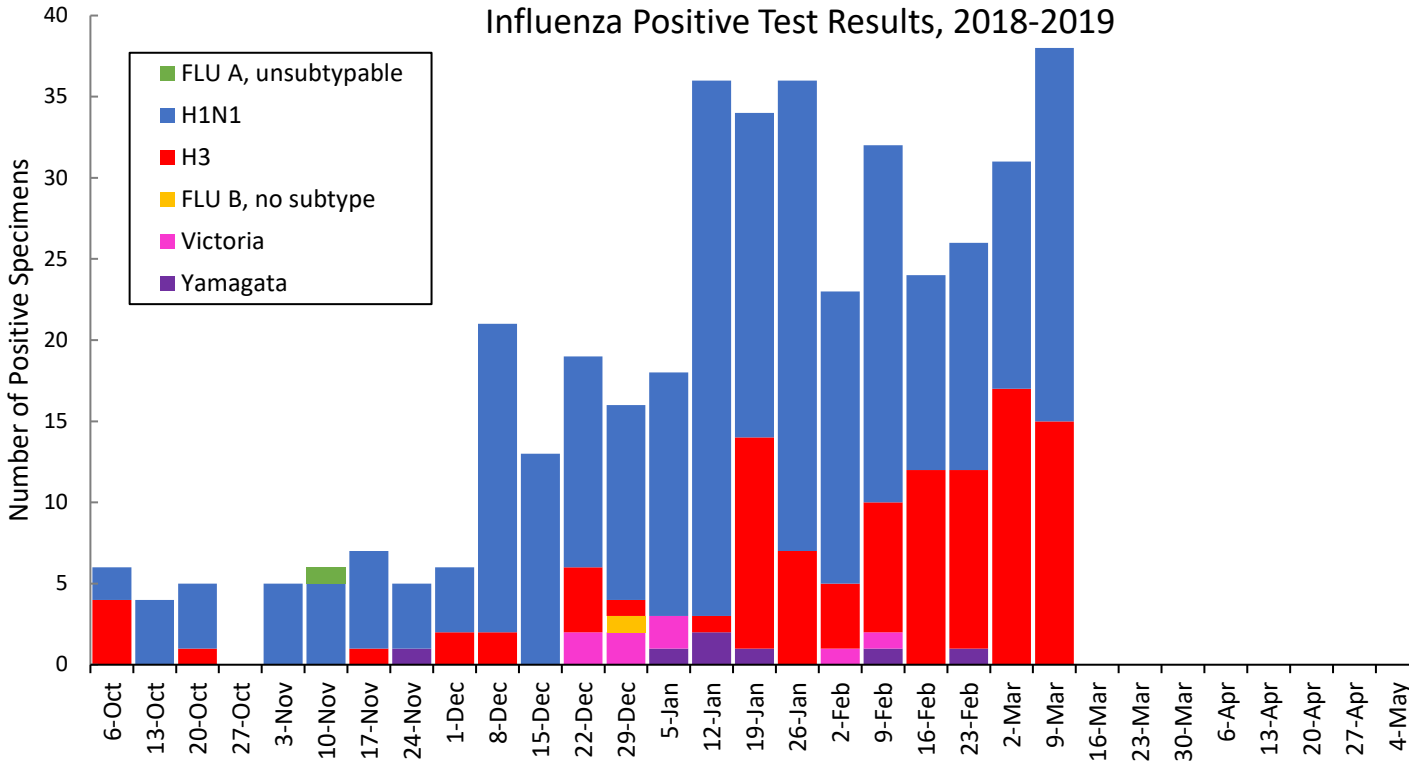
The CDC Influenza Hospitalization Surveillance Project (IHSP) provides population-based rates of hospitalization due to severe influenza-related illness through active surveillance and chart review of lab-confirmed cases from Oct. 1, 2018 until Apr. 30, 2019, for Clinton, Eaton, Ingham, Genesee, and Washtenaw counties. Since Oct. 1, there have been **470 (74 pediatric, 396 adult)** influenza-related hospitalizations reported in the catchment area for the 2018-2019 season.



Washtenaw County was added in 2017-2018

MDHHS Bureau of Laboratories reported 38 new positive influenza results (17C, 1N, 2SE, 18SW)

Respiratory Virus	# Positive Respiratory Virus Results by Region				Overall Total	2017-18 Total
	C	N	SE	SW		
2009 A/H1N1pdm	132	21	47	94	294	80
Influenza A/H3	41	11	8	38	98	579
Influenza B	2	2	10	2	16	220
Total	175	34	65	134	408	879



Based on STARLIMS MDHHS BOL Testing Portal

Note: Flu B subtyping will be reported based on MDHHS BOL testing runs (roughly each month) and will be backtracked into this graph

Most recent MDHHS BOL Flu B subtyping run: **March 6, 2019**

Michigan Sentinel Clinical Lab Respiratory Virus Data

Ten (10) sentinel clinical labs (2SE, 1SW, 6C, 1N) reported during this week

SE Region

- Influenza A: moderate; some increases
- Influenza B: slightly elevated; some increases
- Parainfluenza: low
- RSV: slightly elevated; downward trend
- Adenovirus: slightly elevated
- hMPV: slightly elevated

Central Region

- Influenza A: moderate; increasing
- Influenza B: low
- Parainfluenza: low
- RSV: low or slightly elevated
- Adenovirus: low
- hMPV: sporadic-low

SW Region

- Influenza A: moderate; increasing
- Influenza B: sporadic-low
- Parainfluenza: sporadic-low
- RSV: moderate; steady
- Adenovirus: low
- hMPV: slightly elevated

North Region

- Influenza A: slightly elevated
- Influenza B: slightly elevated
- Parainfluenza: no data available
- RSV: low
- Adenovirus: no data available
- hMPV: no data available

There were four (0N, 0C, 2SE, 2SW) new respiratory viral outbreaks reported to MDHHS during this time period. Respiratory outbreaks for the 2018-2019 season are listed in the table below.

Facility Type	C	N	SE	SW	Total	2016-2017 Total	2017-2018 Total
Schools: K-12 & College	2	2	1	1	6	25	14
Long-term Care / Assisted Living Facility	9	2	9	8	28	138	238
Healthcare Facility	1	0	0	0	1	23	4
Daycare	0	0	0	0	0	3	4
Homeless Shelter	0	0	1	0	1	1	0
Correctional Facility	1	3	0	0	4	2	10
Other	0	0	0	0	0	3	0
Total	13	7	11	9	40	195	270

Did you know?

Congregate setting outbreaks of viral respiratory illnesses are required to be reported to your local health department? See:

- [Influenza Guidance for Healthcare Providers](#)
- [Guideline for influenza and Respiratory Virus Outbreaks in Long-Term Care Facilities](#)

FluBytes

- [CHOP: Vaccine Decision Making Among Families](#)
- [Multi-agency Vaccine Education Website Launched](#)
- [WHO Announces New Global Influenza Strategy](#)
- [Getting a Flu Shot May Reduce Risk of Heart Attack](#)
- [Flu Activity Surveillance Update](#)

MDHHS Contributors

Bureau of Epidemiology and Population Health –
S. Bidol, MPH, S. Eckel, MPH, S. Kim, MPH

Bureau of Family Health Services – M. Doebler, MPH

Bureau of Labs – B. Robeson, MT, V. Vavricka, MS

For questions or to be added to the distribution list, please contact Sue Kim at KimS2@michigan.gov