



Michigan Flu Focus

Weekly Influenza Surveillance Report



Editor: Seth Eckel, MPH
Co-Editor: Macey Ladisky

Editor Email: EckelS1@michigan.gov

January 29, 2018

Vol. 15; No. 15

Week Ending January 20, 2018 | WEEK 3

Michigan Influenza Activity
No Activity
Sporadic
Local
Regional
<u>Widespread</u>

*Clicking on the current activity level will direct you to the CDC webpage defining each activity level for the geographic spread of influenza

Updates of Interest

Schools across at least a dozen of states have closed their doors for a day or longer this flu season! Know how you can help prevent the spread of influenza in Michigan schools by:

- Have students stay home until well
- It is not too late to receive the flu vaccine
- Promote hand hygiene
- Cover coughs and sneezes with a tissue or sleeve

Weekly Influenza Activity Estimates Reported by State & Territorial Epidemiologists*

Week ending January 20, 2018 - Week 3



Influenza-associated Pediatric Mortality

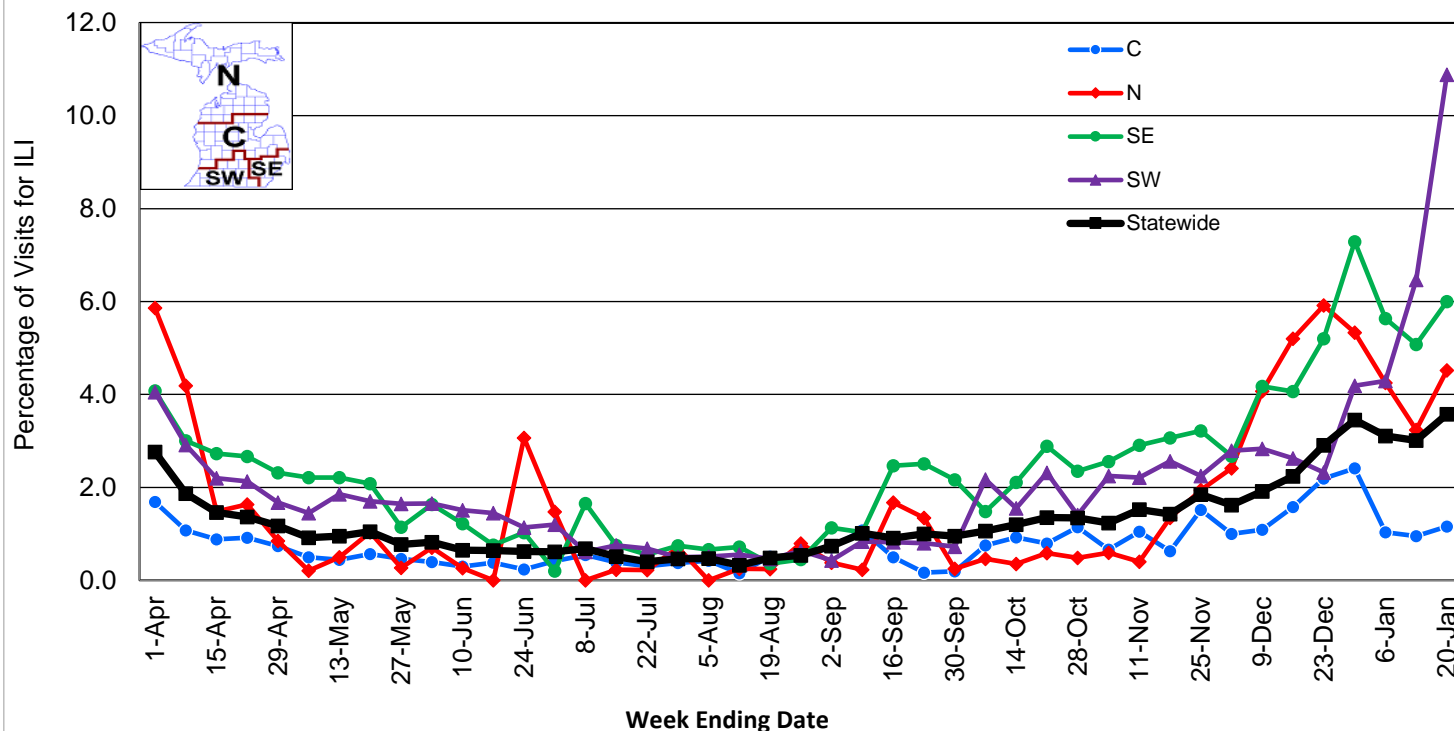
No pediatric influenza deaths have been confirmed by MDHHS do date for the 2017-2018 flu season. Nationally, thirty-seven (37) influenza-associated pediatric deaths have been reported thus far for the 2017-2018 flu season.

- Number of reports by region: 24 total [C(10), N(2), SE(9), SW(3)]
- Proportion of visits due to ILI: ↑ 3.6 % (regional baseline*: 1.8%)
- A total of 411 patient visits due to ILI were reported out of 11,500 office visits

*Regional baseline is developed by calculating the mean percentage of patient visits for ILI during non-influenza weeks for the previous three seasons and adding two standard deviations.

Become a Sentinel Provider! Contact: EckelS1@michigan.gov

Percentage of Visits for Influenza-like Illness (ILI)
Reported by Sentinel Providers, Statewide and Regions
2016-17 and 2017-18 Flu Seasons

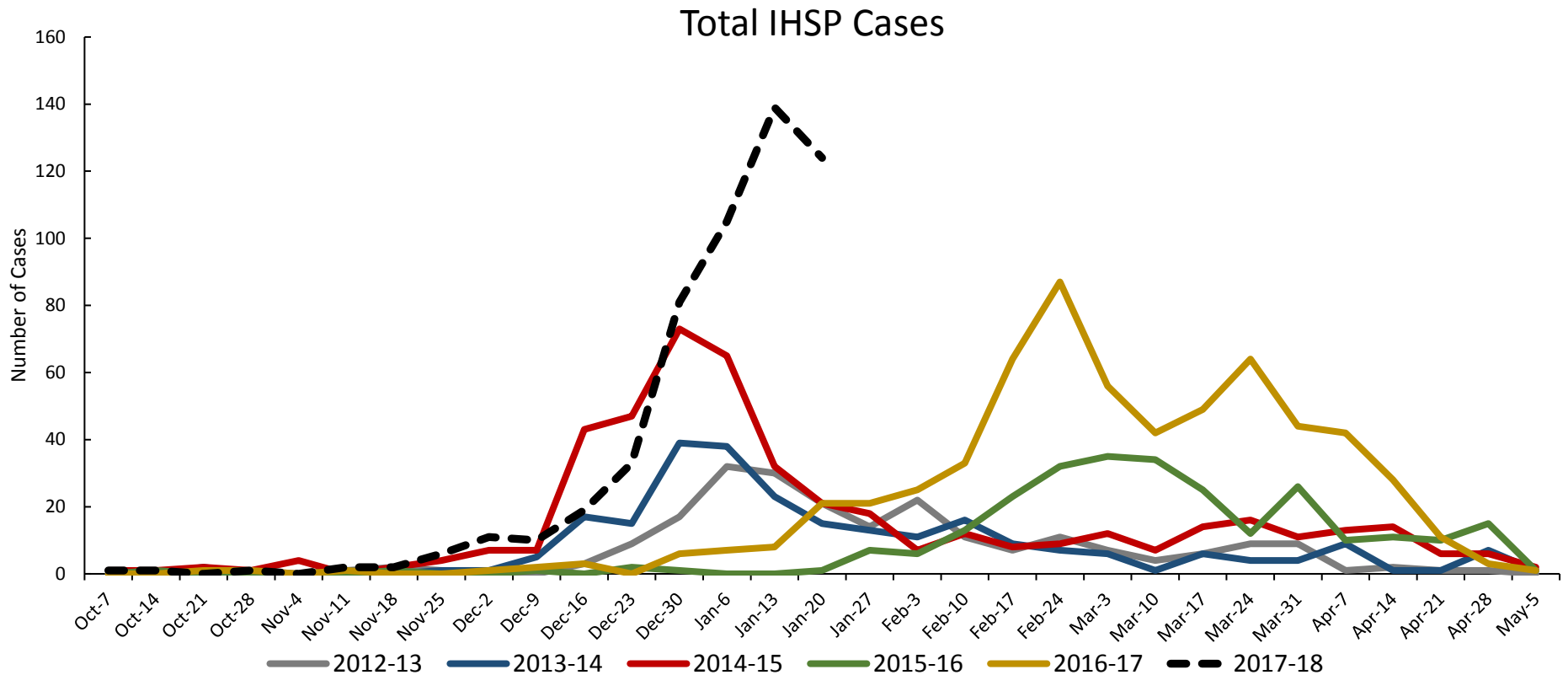


National Surveillance

In the United States, 6.6% of outpatient visits were due to influenza-like illness, which is above the national baseline of 2.2%.

Influenza Hospitalization Surveillance Project

The CDC Influenza Hospitalization Surveillance Project (IHSP) provides population-based rates of hospitalization due to severe influenza-related illness through active surveillance and chart review of lab-confirmed cases from Oct. 1, 2017 until Apr. 30, 2018, for Clinton, Eaton, Ingham, Genesee, and Washtenaw counties. Since Oct. 1, there have been a total of **535 (30 pediatric, 505 adult)** influenza-related hospitalizations reported in the catchment area for the 2017-2018.

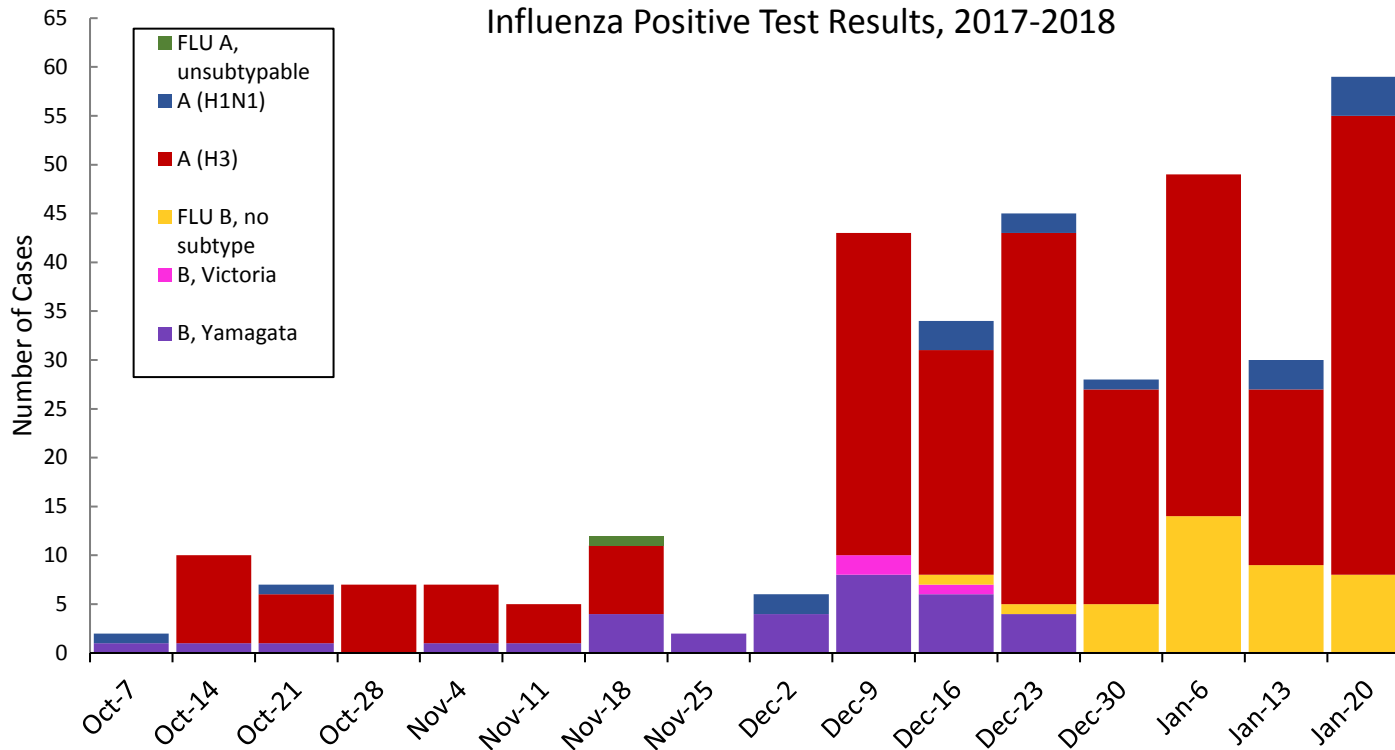


Genesee County was added in 2012-2013

Washtenaw County was added in 2017-2018

MDHHS Bureau of Laboratories reported 81 new positive influenza (10C, 0N, 5SE, 13SW).

Respiratory Virus	# Positive Respiratory Virus Results by Region				Overall Total
	C	N	SE	SW	
2009 A/H1N1pdm	1	1	9	5	16
Influenza A/H3	108	29	86	90	313
Influenza B	6	9	39	16	70
Total	115	39	134	111	399



*Based on STARLIMS MDHHS BOL Testing Portal

Note: Flu B subtyping will be reported based on MDHHS BOL testing runs (roughly each month) and will be backtracked into

Michigan Sentinel Clinical Lab Respiratory Virus Data

Eleven (11) sentinel clinical labs (3SE, 2SW, 6C, 0N) reported during this week.

SE Region

- Influenza A: very sharply elevated/very sharply increasing
- Influenza B: elevated/sharply increasing
- Parainfluenza: sporadic to slightly elevated
- RSV: elevated but stable or slightly decreasing
- Adenovirus: slightly elevated/increasing
- hMPV: elevated/slightly decreasing

Central Region

- Influenza A: elevated/briskly increasing
- Influenza B: low/slightly increasing
- Parainfluenza: sporadic
- RSV: elevated/slightly increasing
- Adenovirus: slightly elevated
- hMPV: low

SW Region

- Influenza A: very sharply elevated; very sharply increasing
- Influenza B: slightly elevated, stable
- Parainfluenza: sporadic
- RSV: elevated/increasing
- Adenovirus: low
- hMPV: slightly elevated

North Region

- No data available

There were 28 (0N, 10C, 5SE, 13SW) new respiratory viral outbreaks reported to MDHHS during this time Period. Respiratory outbreaks for the 2017-2018 season are listed in the table below.

Facility Type	C	N	SE	SW	Total	2015-2016 Total	2016-2017 Total
Schools: K-12 & College	2		1	1	4	10	25
Long-term Care / Assisted Living Facility	57	9	19	28	113	60	138
Healthcare Facility	1				1	11	23
Daycare	1			1	2	2	3
Homeless Shelter						0	1
Correctional Facility		1	1		2	2	2
Other						2	3
Total	61	10	21	30	122	87	195

Did you know?

Congregate setting outbreaks of viral respiratory illnesses are required to be reported to your local health department? See:

- [Influenza Guidance for Healthcare Providers](#)
- [Guideline for influenza and Respiratory Virus Outbreaks in Long-Term Care Facilities](#)

FluBytes

- [Study Confirms Flu Likely Spreads by Aerosols, Not Just Coughs, Sneezes](#)
- [Flu Virus Can Trigger A Heart Attack](#)
- [Here Are 2 Possible Steps Towards a Universal Flu Vaccine](#)
- [Flu Season Hitting West Michigan Schools](#)

MDHHS Contributors

Bureau of Family Health Services -

Bureau of Epidemiology and Population Health –
S. Bidol, MPH, S. Eckel, MPH, S. Kim, MPH, M. Ladisky

Bureau of Labs – B. Robeson, MT, V. Vavricka, MS

For questions or to be added to the distribution list, please contact Seth Eckel at EckelS1@michigan.gov