



# MI Flu Focus

## Influenza Surveillance Updates Bureaus of Epidemiology and Laboratories, and Division of Immunization/Bureau of Family Health Services



Editor: Jalyn Ingalls, MA

[IngallsJ@michigan.gov](mailto:IngallsJ@michigan.gov)

June 19, 2017

Vol. 14; No. 34

**Summer Edition: Influenza Surveillance Report for the Week Ending June 10, 2017**

### 2017 Summer Surveillance System Reports

**Updates of Interest:** The summer fair season usually brings an increase in the number of interactions between people and pigs, which can lead to human cases of H3N2v. Clinicians are reminded to ask patients being evaluated for influenza-like illness if they have had any exposure to swine, such as attendance at county fairs or livestock exhibits. For more information, see *FluBytes* on page 3.

#### Sentinel Provider Surveillance

The proportion of visits due to influenza-like illness (ILI) decreased to 0.6% overall, which is below the regional baseline of 1.9%. A total of 62 patient visits due to ILI were reported out of 10,141 office visits. Please note: These rates may change as additional reports are received.

#### Number of Reports by Region

(28 total):

- C (10)
- N (2)
- SE (12)
- SW (4)

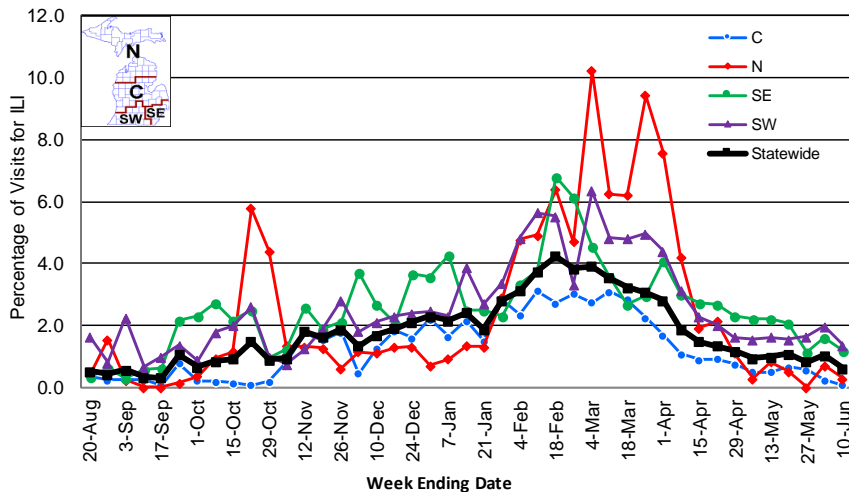
**National Surveillance:** In the United States, 0.9% of outpatient visits were due to influenza-like illness, which is below the national baseline of 2.2%.

#### Become a Sentinel Provider!

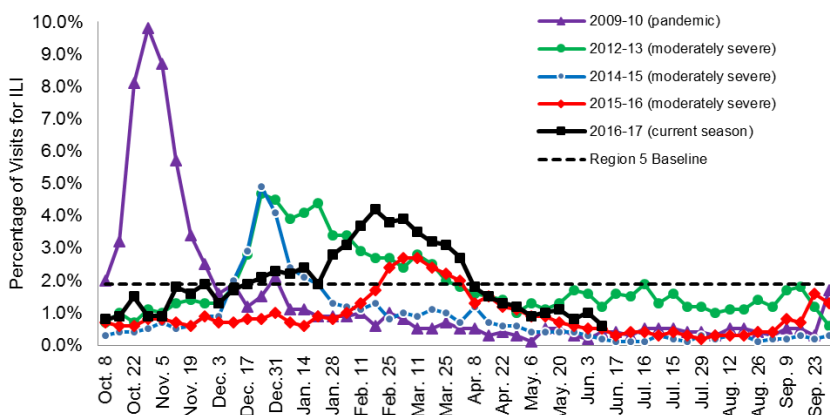
As part of pandemic influenza surveillance, CDC and MDHHS highly encourage year-round participation from all sentinel providers. New practices are encouraged to join the sentinel surveillance program today! Contact Jalyn Ingalls ([IngallsJ@michigan.gov](mailto:IngallsJ@michigan.gov)) for more information.

Additional information is in the weekly FluView reports available at: [www.cdc.gov/flu/weekly](http://www.cdc.gov/flu/weekly).

Percentage of Visits for Influenza-like Illness (ILI) Reported by Sentinel Providers, Statewide and Regions 2016-17 Flu Season



Percentage of Visits for Influenza-like Illness (ILI) Reported by the US Outpatient Influenza-like Illness Surveillance Network (ILINet): Michigan, Select Seasons



## Laboratory Surveillance

MDHHS Bureau of Laboratories reported 4 new positive influenza results (2 A/H3 and 2 flu B) during this time period. A total of 653 positive influenza results have been reported for the 2016-17 season. Influenza results for the 2016-17 season are in the table below.

Respiratory Virus	# Positive Respiratory Virus Results by Region				Total	# Specimens Antigenically Characterized	# Tested for Antiviral Resistance
	C	N	SE	SW			# Resistant / Total # Tested
2009 A/H1N1pdm	1	1	1	3	6	2 (A/CALIFORNIA/07/2009-LIKE (H1N1)pdm09)	
Influenza A/H3	118	26	119	183	446	11 (A/HONG KONG/4801/2014-LIKE)	0 / 95
Influenza B	66	11	48	76	201	6 (B/PHUKET/3073/2013-LIKE) 9 (B/BRISBANE/60/2008-LIKE)	
A / unsubtypeable							

In addition, 10 sentinel clinical labs (2SE, 1SW, 6C, 1N) reported influenza testing results. One (1) lab (C) reported sporadic influenza A activity. Two (2) labs (SE, SW) reported sporadic influenza B activity. Three (3) labs (SE, SW, C) reported low Parainfluenza activity. Two (2) labs (SE, C) reported RSV activity at low or sporadic levels. Three (3) labs (SE, C) reported low or slightly increased Adenovirus activity. Two labs (C, N) reported low hMPV activity. Overall testing volumes are in the low range.

## Congregate Setting Outbreaks of Viral Respiratory Illness

There were 3 new respiratory facility outbreaks (1C, 2SE) reported to MDHHS during this time period. Respiratory facility outbreaks for the 2016-2017 season are listed in the table below.

Facility Type	C	N	SE	SW	Total
K-12 School	3	4		3	10
Long-term Care / Assisted Living Facility	31	1	28	43	103
Healthcare Facility	3		4	1	8
Daycare			1	2	3
Homeless Shelter			1		1
<b>Total</b>	<b>37</b>	<b>5</b>	<b>34</b>	<b>49</b>	<b>125</b>

## 2016-2017 Flu Season Surveillance Systems Summary Report

### Hospital Surveillance

The Influenza Hospitalization Surveillance Project (IHSP) surveillance has concluded for the 2016-2017 flu season. During this season, 635 flu-related hospitalizations were reported for the catchment area (Eaton, Clinton, Ingham and Genesee). This is the highest single season total since IHSP surveillance was initiated after the influenza pandemic of 2009.

The MDHHS Influenza Sentinel Hospital Network monitors influenza-related admissions reported voluntarily by hospitals statewide. Surveillance peaked for the 2016-2017 season during the week ending February 25, with 156 flu-related hospitalizations reported by 12 facilities across the state. Additional hospitals are encouraged to join for the 2017-2018 season; please contact Seth Eckel at [eckels1@michigan.gov](mailto:eckels1@michigan.gov).

### Influenza-associated Pediatric Mortality

No new pediatric deaths were reported to MDHHS for the week ending June 10, 2017. A total of 5 influenza-associated pediatric deaths in Michigan have been reported thus far for the 2016-17 season. Four of the children tested positive for Influenza B, and one tested positive for Influenza A/H3. Nationally, 99 influenza-associated pediatric deaths have been reported thus far for the 2016-17 flu season.

### Michigan Disease Surveillance System

MDSS influenza data is comprised of both aggregate and individual reports. For the 2016-2017 season, aggregate counts peaked during Week 9 with 7,339 reports. Individual reports peaked during Week 9 with 2,790 cases having been reported to the MDSS.

### Emergency Department Surveillance

In monitoring chief complaint data for the 2016-2017 flu season, constitutional complaints peaked during Week 8 with 14 county level and 1 statewide alert being issued. Respiratory complaints peaked during Week 6, with 7 county level alerts having been issued.

## VICNETWORK WEBINAR: CREATING A PRO-IMMUNIZATION CULTURE AND PREPARING FOR NIAM

The VICNetwork is hosting a webinar on June 28 from 2:00-3:00pm (ET) titled, "Creating a Pro-Immunization Culture and Preparing for National Immunization Awareness Month (NIAM)." During the webinar, they will introduce the NIAM Communication Toolkit to help prepare for NIAM 2017 in August. The webinar is free, but you must [register](#) in advance.

## WEEKLY CDC WEBINAR SERIES: THE PINK BOOK

The Centers for Disease Control and Prevention (CDC) is starting a 15 week webinar series on the 13<sup>th</sup> edition of *Epidemiology and Prevention of Vaccine-Preventable Diseases*, also known as the pink book. This is a live series of 1-hour webinars that starts Wednesday, June 14. All sessions will begin at 12:00pm (ET). [Registration](#) for this webinar series is available online.

## CDC SLIDE DECK FOR CHILDCARE PROFESSIONALS

The CDC has created a [slide deck](#) titled, "How Your Child Care Program Can Support Immunization." This presentation is intended for use by health departments, coalitions, child care resource and referral agencies, and other organizations that provide training for child care programs. Please distribute this slide deck to coworkers or others who work with childcare professionals.

## H3N2V GUIDANCE FOR HEALTHCARE AND PUBLIC HEALTH PROVIDERS

As the summer fair season approaches, there is an increase of human contact with swine, and an increased risk of human cases of H3N2v. In 2016, Michigan reported 12 human cases of H3N2v, all occurring after exposure to swine. The Michigan Department of Health and Human Services has provided [guidance](#) for clinicians to help identify and treat human cases of H3N2v. Also, the Centers for Disease Control and Prevention [provides educational and communication resources](#) that can be used to help educate patients about preventing the spread of flu between pigs and people.

## INFLUENZA-RELATED JOURNAL ARTICLES

- [Stockpiling ventilators for influenza pandemics](#)
- [Increased risk of influenza among vaccinated adults who are obese](#)
  - [Summary](#) of article
  - Vaccinated obese participants had double the risk of developing influenza in comparison to vaccinated healthy weight individuals
- [A systematic review of economic evaluations of seasonal influenza vaccination for the elderly population in the European Union](#)
- [Effectiveness of influenza vaccines in asthma: A systematic review and meta-analysis](#)
- [Epidemiological features of influenza circulation in swine populations: A systematic review and meta-analysis](#)
- [Three mutations switch H7N9 influenza to human-type receptor specificity](#)

## OTHER INFLUENZA-RELATED NEWS

- [Canine influenza 101: An interview with Dr. Cynda Crawford](#)
- [Five confirmed canine influenza strains now in Georgia](#)
- [Highly contagious and potentially dangerous dog flu has made its way to Louisville](#)
- [Year-round maternal influenza vaccination reduced infection rates, improved birth outcomes](#)
- [HHS unveils updated pandemic flu plan](#)
  - [Pandemic Plan](#)

## AVIAN INFLUENZA INTERNATIONAL NEWS

- [H7N9 avian influenza: 12 more cases reported in China](#)
- [China reports additional H7N9 avian flu, health officials meet in Hong Kong](#)

## FLU WEBSITES

[www.michigan.gov/flu](http://www.michigan.gov/flu)  
[www.cdc.gov/flu](http://www.cdc.gov/flu)  
[www.flu.gov](http://www.flu.gov)  
<http://vaccine.healthmap.org/>

Archived editions of FluBytes are available [here](#) and MI FluFocus archives are [here](#).

For questions or to be added to the distribution list, please contact Jalyn Ingalls at [ingallsj@michigan.gov](mailto:ingallsj@michigan.gov).

### MDHHS Contributors

Bureau of Epidemiology – S. Bidol, MPH, S. Eckel, MPH

Bureau of Family Health Services, Division of Immunization – J. Ingalls, MA

Bureau of Labs – B. Robeson, MT, V. Vavricka, MS