



# Michigan Flu Focus

Weekly Influenza Surveillance Report



Editor: Sue Kim, MPH

Editor Email: [KimS2@michigan.gov](mailto:KimS2@michigan.gov)

January 18, 2019

Vol. 16; No.15

Week Ending January 12, 2019 | WEEK 2

Michigan Influenza Activity
No Activity
Sporadic
Local
<u>Regional</u>
Widespread

\*Clicking on the current activity level will direct you to the CDC webpage defining each activity level for the geographic spread of influenza

## Updates of Interest

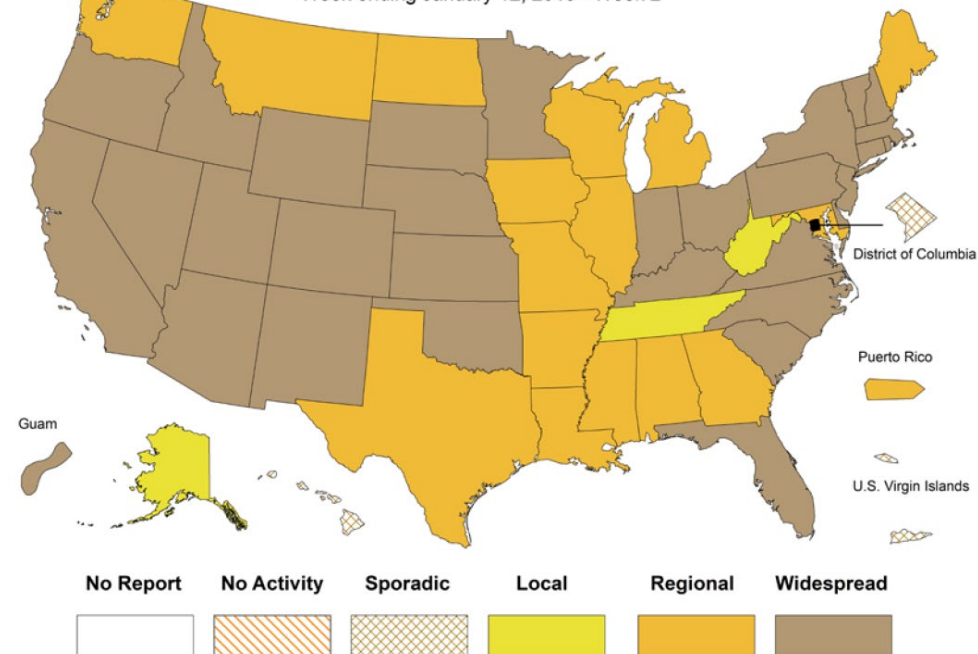
The Michigan Department of Health & Human Services Bureau of Laboratories (MDHHS BOL) has updated their virology/microbiology test requisition form (**DCH-0583**) to collect patient status information. This is located below where you select influenza (PCR/culture) testing. Please update to the newest version (see link below) and include patient status at the time of specimen collection (inpatient, outpatient, or unknown) if available.

Please contact MDHHS for any questions at 517-335-8165.

Link: [https://www.michigan.gov/documents/DCH-0583TEST\\_REQUEST\\_7587\\_7.pdf](https://www.michigan.gov/documents/DCH-0583TEST_REQUEST_7587_7.pdf)

### Weekly Influenza Activity Estimates Reported by State & Territorial Epidemiologists\*

Week ending January 12, 2019 - Week 2



Source: CDC FluView

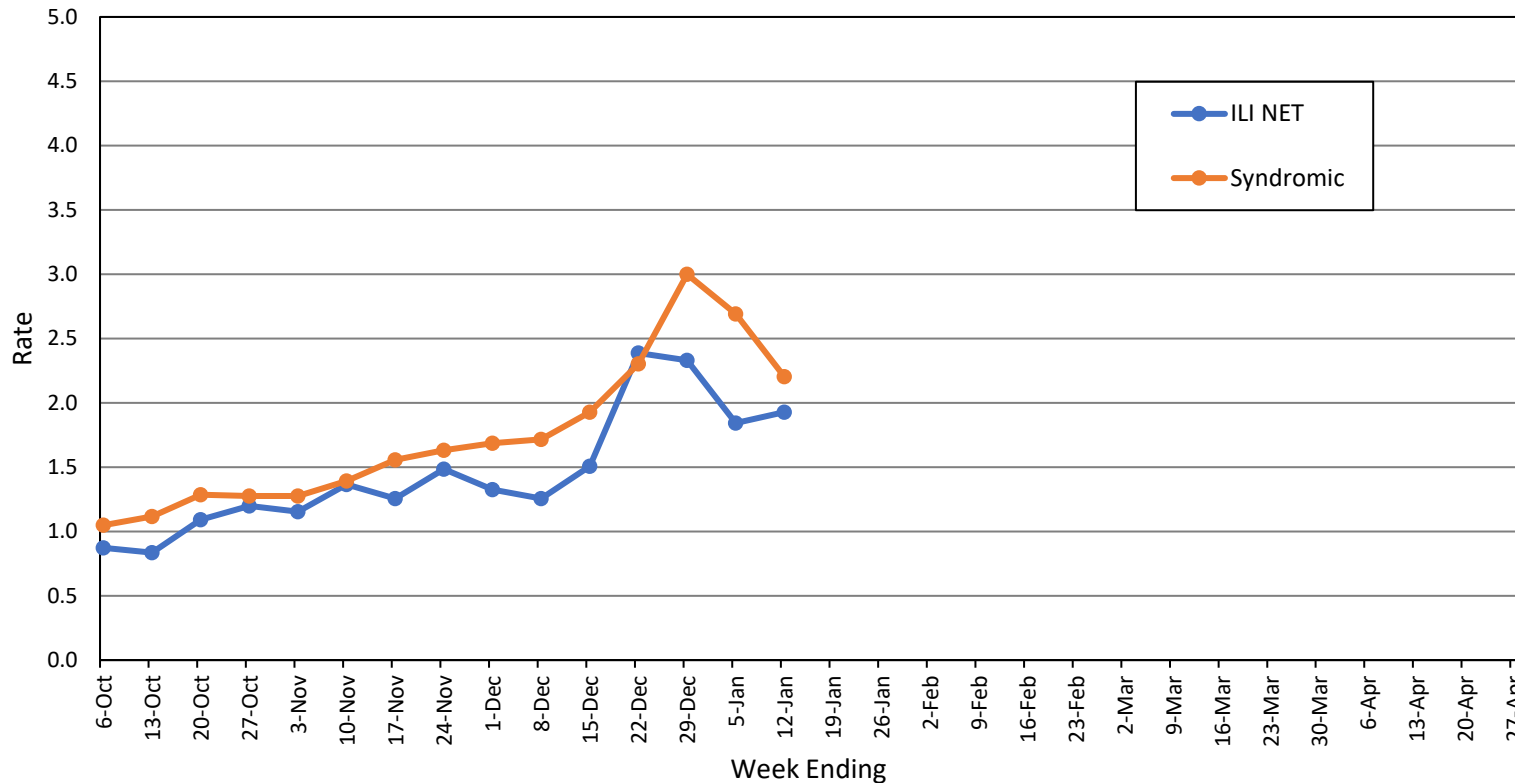
### Influenza-associated Pediatric Mortality

One (1) pediatric influenza (A/H1N1-09) death has been confirmed by MDHHS for the 2018-2019 flu season. Nationally, 19 influenza-associated pediatric deaths have been reported thus far for the 2018-2019 flu season.

- Number of reports by region: 36 total [C(10), N(3), SE(16), SW(7)]
- Proportion of visits due to ILI: **↑ 1.9%** (regional baseline\*: 1.8%)
- A total of 268 patient visits due to ILI were reported out of 16,897 office visits

\*Regional baseline is developed by calculating the mean percentage of patient visits for ILI during non-influenza weeks for the previous three seasons and adding two standard deviations.

MI Statewide ILI NET and Syndromic Surveillance Rates, 2018-2019



## National Surveillance

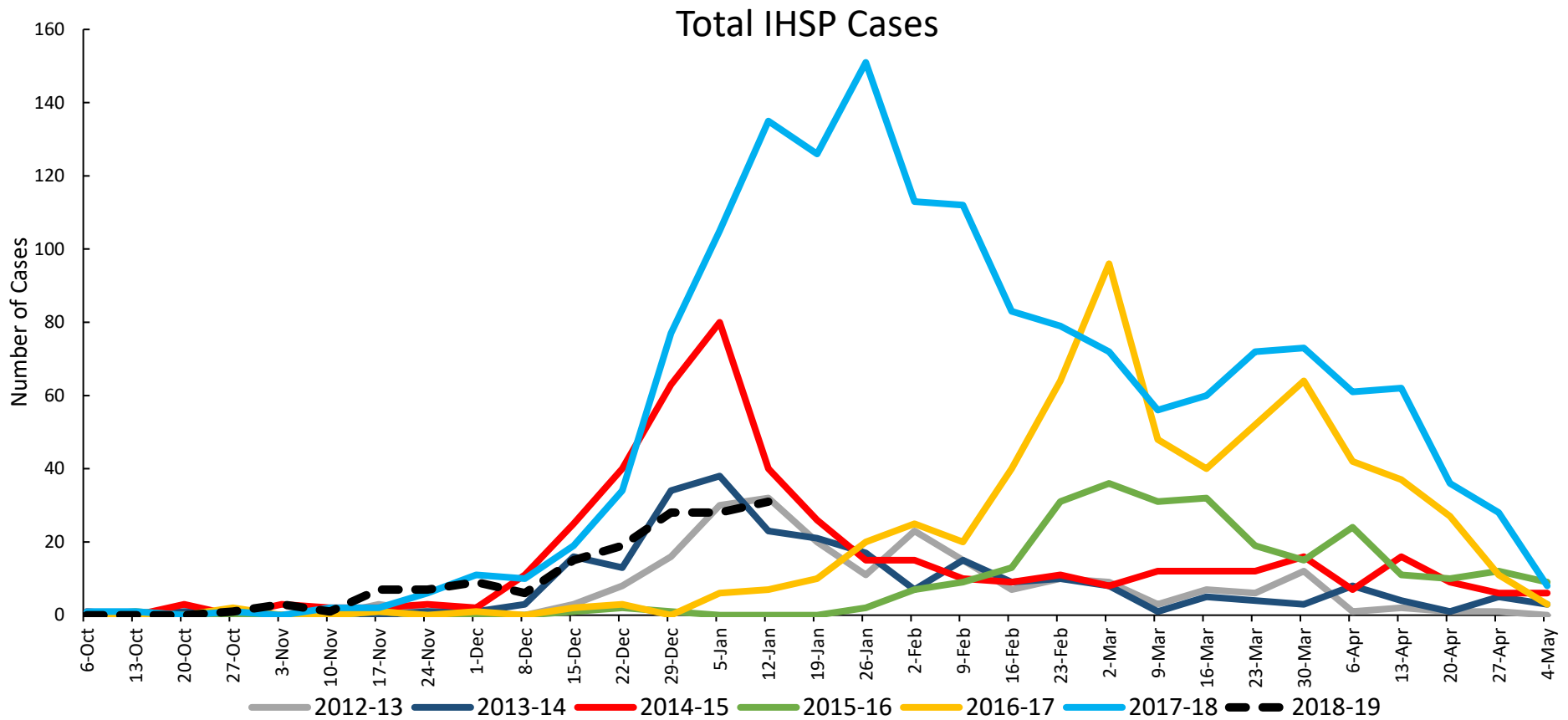
In the United States, 3.1% of outpatient visits were due to influenza-like illness (ILI), which is above the national baseline of 2.2%.

**Become a sentinel provider!**

Contact Shelly Doeblen at [DoeblerM@michigan.gov](mailto:DoeblerM@michigan.gov)

## Influenza Hospitalization Surveillance Project

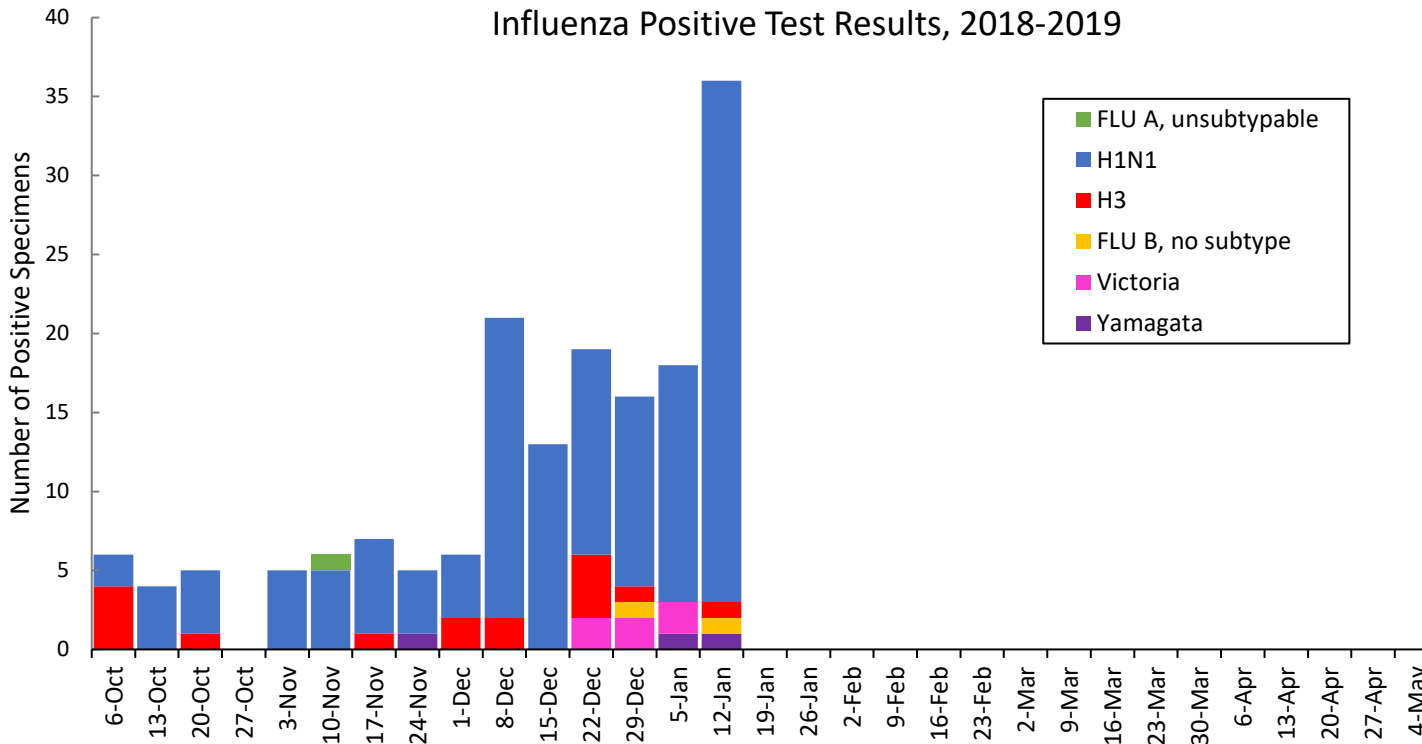
The CDC Influenza Hospitalization Surveillance Project (IHSP) provides population-based rates of hospitalization due to severe influenza-related illness through active surveillance and chart review of lab-confirmed cases from Oct. 1, 2018 until Apr. 30, 2019, for Clinton, Eaton, Ingham, Genesee, and Washtenaw counties. Since Oct. 1, there have been **155 (21 pediatric, 134 adult)** influenza-related hospitalizations reported in the catchment area for the 2018-2019 season.



Washtenaw County was added in 2017-2018

MDHHS Bureau of Laboratories reported 40 new positive influenza results (12C, 1N, 6SE, 21SW)

Respiratory Virus	# Positive Respiratory Virus Results by Region				Overall Total	2017-18 Total
	C	N	SE	SW		
2009 A/H1N1pdm	54	9	26	45	134	80
Influenza A/H3	5	3	3	5	16	579
Influenza B	0	0	7	1	8	220
<b>Total</b>	<b>59</b>	<b>12</b>	<b>36</b>	<b>51</b>	<b>158</b>	<b>879</b>



Based on STARLIMS MDHHS BOL Testing Portal

Note: Flu B subtyping will be reported based on MDHHS BOL testing runs (roughly each month) and will be backtracked into this graph

Most recent MDHHS BOL Flu B subtyping run: **January 10, 2019**

## Michigan Sentinel Clinical Lab Respiratory Virus Data

Twelve (12) sentinel clinical labs (3SE, 1SW, 7C, 1N) reported during this week

### SE Region

- Influenza A: moderate; steady or some increases
- Influenza B: low
- Parainfluenza: low-moderate; slightly decreased
- RSV: moderate-high; some decreases
- Adenovirus: low
- hMPV: low-moderate; slightly increased

### Central Region

- Influenza A: low or slightly elevated; some decreases
- Influenza B: sporadic
- Parainfluenza: low
- RSV: low-slightly elevated; increases
- Adenovirus: low
- hMPV: low

### SW Region

- Influenza A: moderate; decreased
- Influenza B: sporadic
- Parainfluenza: low; slightly decreased
- RSV: moderate; steady
- Adenovirus: low
- hMPV: low; slightly increased

### North Region

- Influenza A: low
- Influenza B: sporadic
- Parainfluenza: no data available
- RSV: low; slightly decreased
- Adenovirus: no data available
- hMPV: no data available

There were three (0N, 1C, 0SE, 2SW) new respiratory viral outbreaks reported to MDHHS during this time period. Respiratory outbreaks for the 2018-2019 season are listed in the table below.

Facility Type	C	N	SE	SW	Total	2016-2017 Total	2017-2018 Total
Schools: K-12 & College	1	0	0	0	1	25	14
Long-term Care / Assisted Living Facility	3	1	1	2	7	138	238
Healthcare Facility	0	0	0	0	0	23	4
Daycare	0	0	0	0	0	3	4
Homeless Shelter	0	0	0	0	0	1	0
Correctional Facility	0	0	0	0	0	2	10
Other	0	0	0	0	0	3	0
<b>Total</b>	<b>4</b>	<b>1</b>	<b>1</b>	<b>2</b>	<b>8</b>	<b>195</b>	<b>270</b>

## Did you know?

Congregate setting outbreaks of viral respiratory illnesses are required to be reported to your local health department? See:

- [Influenza Guidance for Healthcare Providers](#)
- [Guideline for influenza and Respiratory Virus Outbreaks in Long-Term Care Facilities](#)

## FluBytes

- [CDC: Up to 7.3 Million Have Had Flu this Season](#)
- [Study: Impact of Repeated Vaccination on Flu Vaccine Effectiveness](#)
- [Severe Flu Outcomes Related to Immune Deficiency and Advanced Age According to Two Recent Studies](#)
- [Top Ten Threats to Global Health in 2019 According to WHO Include Possible Influenza Pandemic](#)

## MDHHS Contributors

**Bureau of Epidemiology and Population Health** – S. Bidol, MPH, S. Eckel, MPH, S. Kim, MPH

**Bureau of Family Health Services** – M. Doebler, MPH

**Bureau of Labs** – B. Robeson, MT, V. Vavricka, MS

For questions or to be added to the distribution list, please contact Sue Kim at [KimS2@michigan.gov](mailto:KimS2@michigan.gov)