



Michigan Flu Focus

Weekly Influenza Surveillance Report



Editor: Seth Eckel, MPH
Co-Editor: Sue Kim, MPH

Editor Email: EckelS1@michigan.gov

June 4, 2018

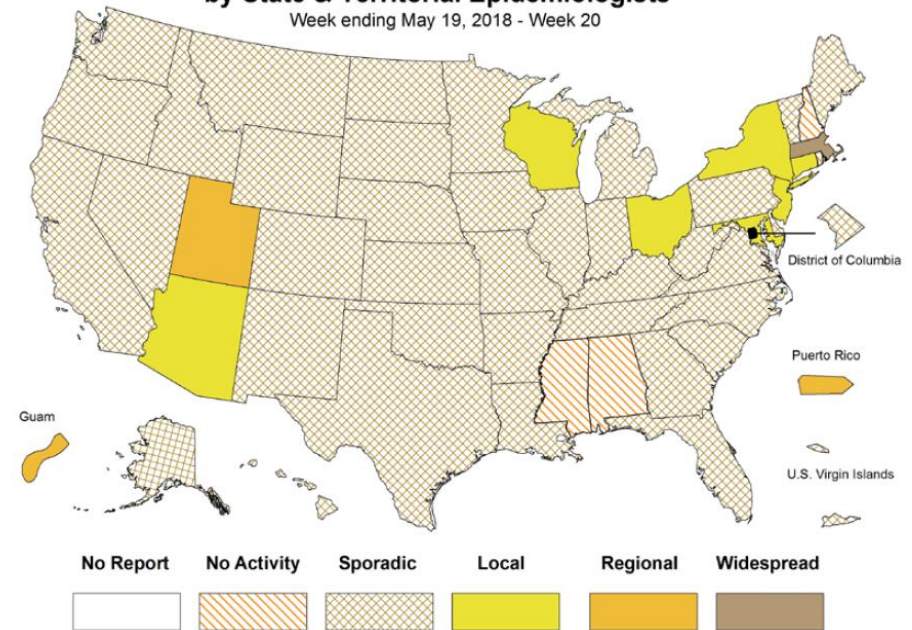
Vol. 15; No. 33

Week Ending May 26, 2018 | WEEK 21

Michigan Influenza Activity
No Activity
<u>Sporadic</u>
Local
Regional
Widespread

*Clicking on the current activity level will direct you to the CDC webpage defining each activity level for the geographic spread of influenza

Weekly Influenza Activity Estimates Reported by State & Territorial Epidemiologists*
Week ending May 19, 2018 - Week 20



Updates of Interest

Since 2017-18 influenza season activity is winding down, the Michigan Flu Focus report will now be distributed the first Friday of each month, unless summer activity warrants more frequent communication. Weekly reports of MIFF will resume in October for the 2018-19 season.

Influenza-associated Pediatric Mortality

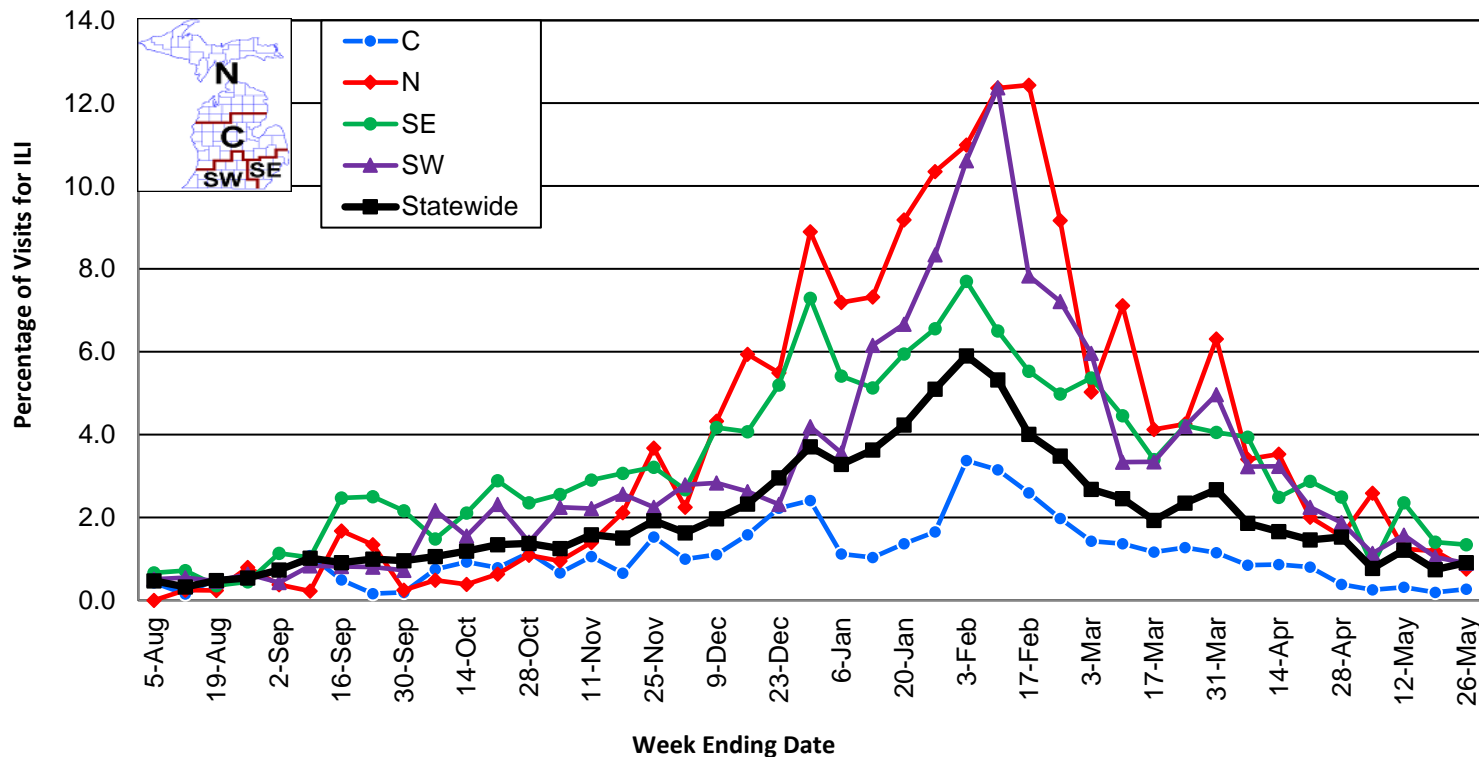
To date, two (2) pediatric influenza deaths (A/H3) have been confirmed by MDHHS for the 2017-2018 flu season. Nationally, 171 influenza-associated pediatric deaths have been reported thus far for the 2017-2018 flu season.

- Number of reports by region: 28 total [C(5), N(2), SE(14), SW(7)]
- Proportion of visits due to ILI: ↑ 0.9% (regional baseline*: 1.8%)
- A total of 71 patient visits due to ILI were reported out of 7,777 office visits

*Regional baseline is developed by calculating the mean percentage of patient visits for ILI during non-influenza weeks for the previous three seasons and adding two standard deviations.

Become a Sentinel Provider! Contact:
EckelS1@michigan.gov

Percentage of Visits for Influenza-like Illness (ILI)
 Reported by Sentinel Providers, Statewide and Regions
 2016-17 and 2017-18 Flu Seasons

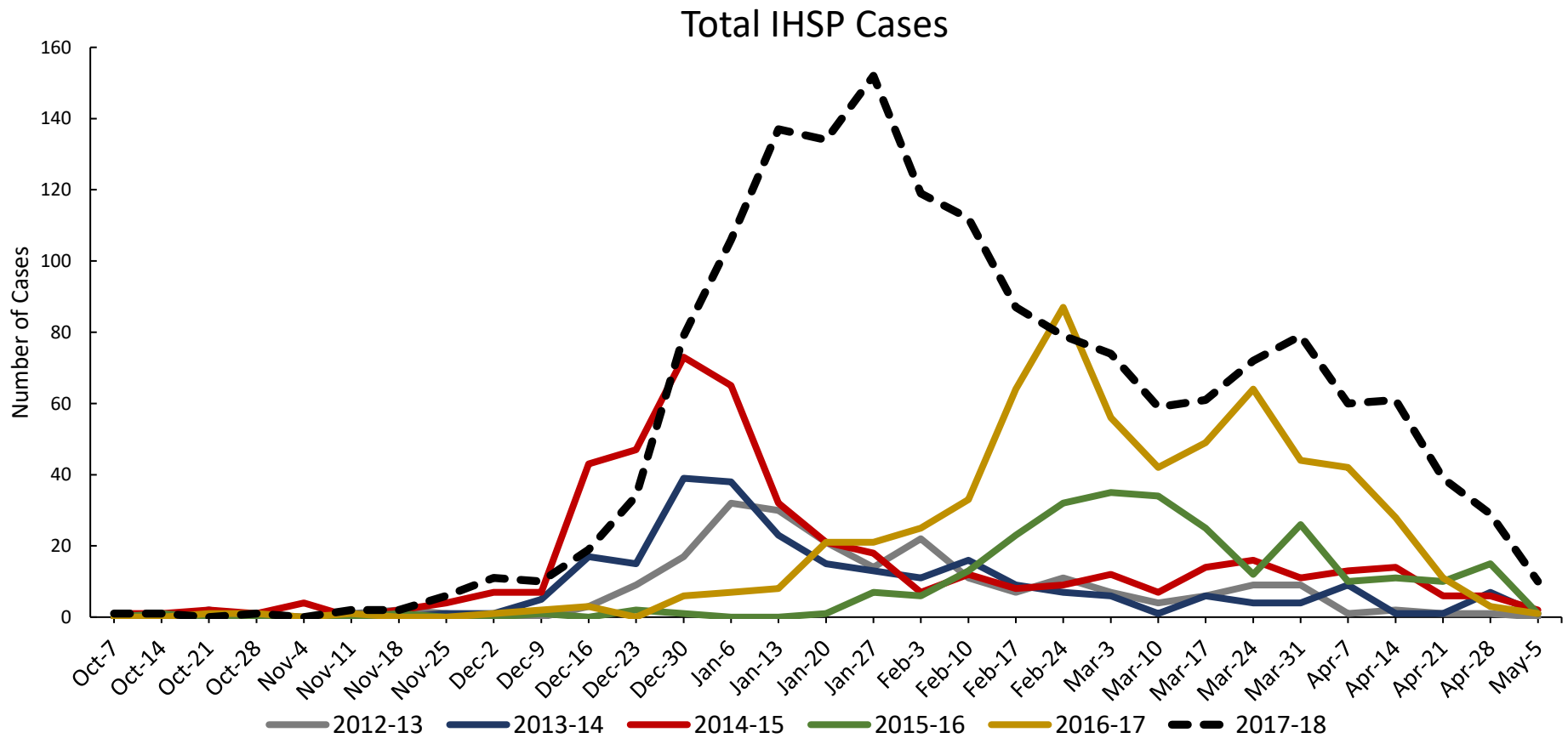


National Surveillance

In the United States, 1.2% of outpatient visits were due to influenza-like illness, which is below the national baseline of 2.2%.

Influenza Hospitalization Surveillance Project

The CDC Influenza Hospitalization Surveillance Project (IHSP) provides population-based rates of hospitalization due to severe influenza-related illness through active surveillance and chart review of lab-confirmed cases from Oct. 1, 2017 until Apr. 30, 2018, for Clinton, Eaton, Ingham, Genesee, and Washtenaw counties. Since Oct. 1, there have been a total of **1,636 (149 pediatric, 1,487 adult)** influenza-related hospitalizations reported in the catchment area for the 2017-2018 season.



Genesee County was added in 2012-2013

Washtenaw County was added in 2017-2018

*Surveillance period has ended as of April 30th, 2018 and will resume October 1st, 2018

MDHHS Bureau of Laboratories reported no new positive influenza results (0C, 0N, 0SE, 0SW).

Respiratory Virus	# Positive Respiratory Virus Results by Region				Overall Total
	C	N	SE	SW	
2009 A/H1N1pdm	28	4	22	26	80
Influenza A/H3	214	41	105	219	579
Influenza B	68	15	49	88	220
Total	310	60	176	333	879

Michigan Sentinel Clinical Lab Respiratory Virus Data

Seven (7) sentinel clinical labs (1SE, 2SW, 4C, 0N) reported during Week 20

SE Region

- Influenza A: low/sporadic
- Influenza B: low/sporadic
- Parainfluenza: no data available
- RSV: low/sporadic
- Adenovirus: no data available
- hMPV: no data available

Central Region

- Influenza A: low/sporadic
- Influenza B: low/sporadic
- Parainfluenza: low
- RSV: low
- Adenovirus: sporadic
- hMPV: low/sporadic

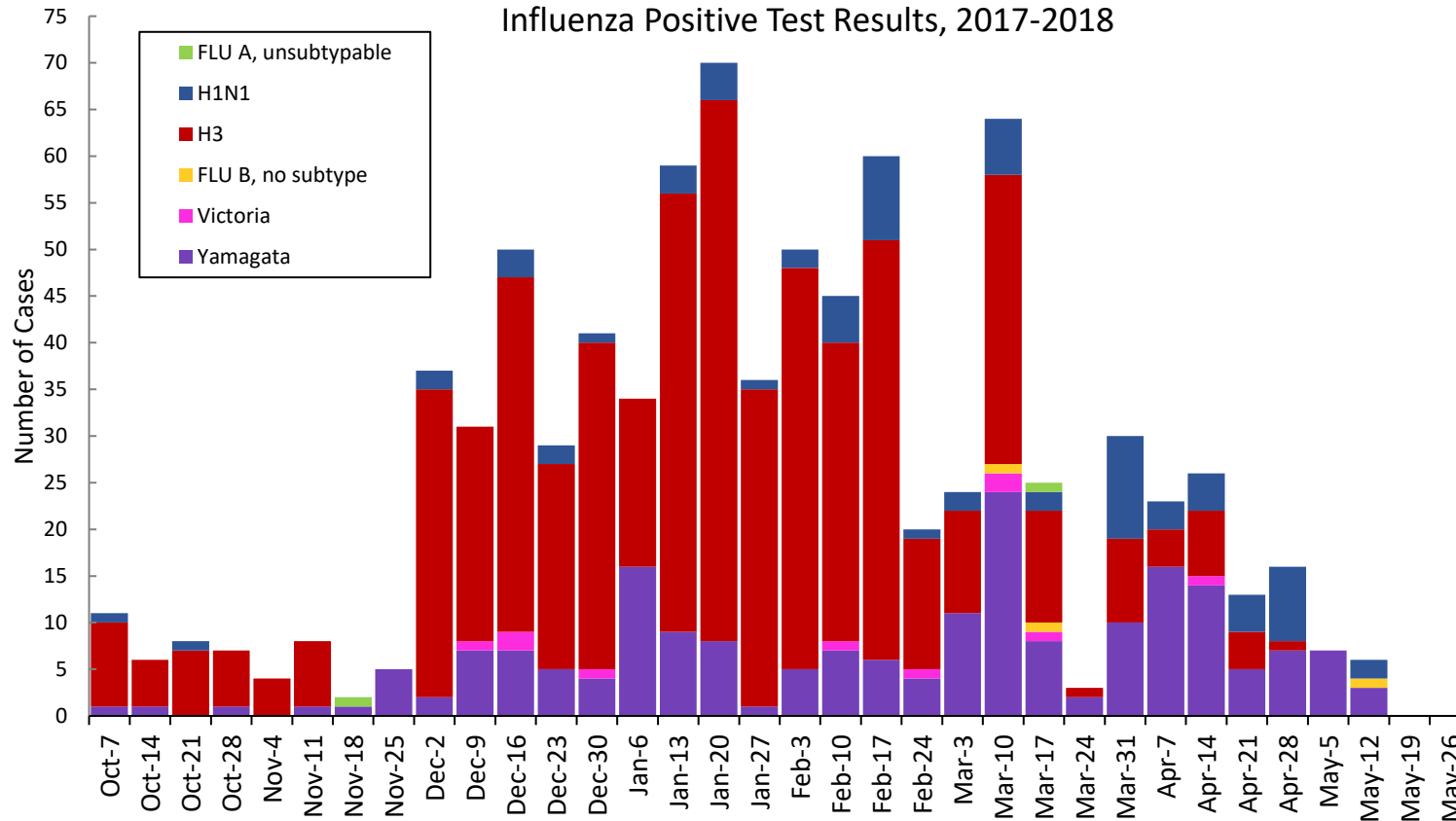
SW Region

- Influenza A: low/sporadic
- Influenza B: low/sporadic
- Parainfluenza: low
- RSV: low
- Adenovirus: sporadic
- hMPV: low; decreasing

North Region

- No data available

Influenza Positive Test Results, 2017-2018



*Based on STARLIMS MDHHS BOL Testing Portal

Note: Flu B subtyping will be reported based on MDHHS BOL testing runs (roughly each month) and will be backtracked into this graph

Most recent MDHHS BOL Flu B subtyping run: **May 11, 2018.**

There was one (ON, OC, 1SE, OSW) new respiratory viral outbreak reported to MDHHS during this time period. Respiratory outbreaks for the 2017-2018 season are listed in the table below.

Facility Type	C	N	SE	SW	Total	2015-2016 Total	2016-2017 Total
Schools: K-12 & College	9		2	3	14	10	25
Long-term Care / Assisted Living Facility	93	10	67	69	239	60	138
Healthcare Facility	2		2		4	11	23
Daycare	2			2	4	2	3
Homeless Shelter						0	1
Correctional Facility	1	4	1	4	10	2	2
Other						2	3
Total	107	14	72	78	271	87	195

Did you know?

Congregate setting outbreaks of viral respiratory illnesses are required to be reported to your local health department? See:

- [Influenza Guidance for Healthcare Providers](#)
- [Guideline for influenza and Respiratory Virus Outbreaks in Long-Term Care Facilities](#)

FluBytes

- [Flu on the Rise in Some Parts of the Southern Hemisphere](#)
- [South Africa, Sweden, Taiwan, and Dominican Republic Report Avian Flu Outbreaks from Different Strains](#)

MDHHS Contributors

Bureau of Family Health Services -

Bureau of Epidemiology and Population Health –
S. Bidol, MPH, S. Eckel, MPH, S. Kim, MPH, M. Ladisky

Bureau of Labs – B. Robeson, MT, V. Vavricka, MS

For questions or to be added to the distribution list, please contact Seth Eckel at EckelS1@michigan.gov