



# Michigan Flu Focus

## Weekly Influenza Surveillance Report



Editor: Seth Eckel, MPH  
Co-Editor: Sue Kim, MPH

Editor Email: [EckelS1@michigan.gov](mailto:EckelS1@michigan.gov)

March 16, 2018

Vol. 15; No. 22

Week Ending March 10, 2018 | WEEK 10

Michigan Influenza Activity
No Activity
Sporadic
Local
Regional
<b><u>Widespread</u></b>

\*Clicking on the current activity level will direct you to the CDC webpage defining each activity level for the geographic spread of influenza

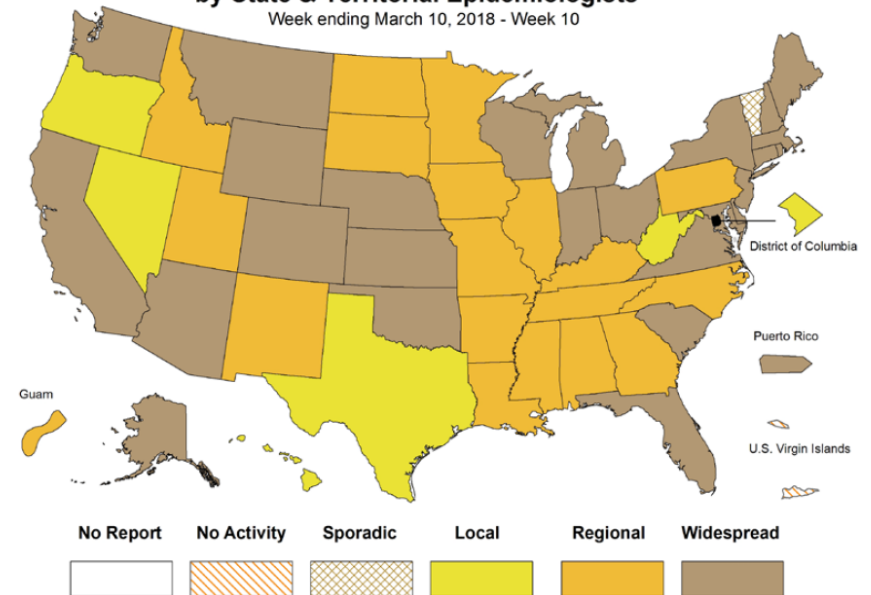
### Updates of Interest

Two new clinical trials are testing an experimental vaccine to prevent influenza caused by an H7N9 influenza virus and whether an adjuvant boosts immune responses of volunteers receiving the vaccine.

Click [here](#) for more details from the National Institutes of Health

Weekly Influenza Activity Estimates Reported by State & Territorial Epidemiologists\*

Week ending March 10, 2018 - Week 10



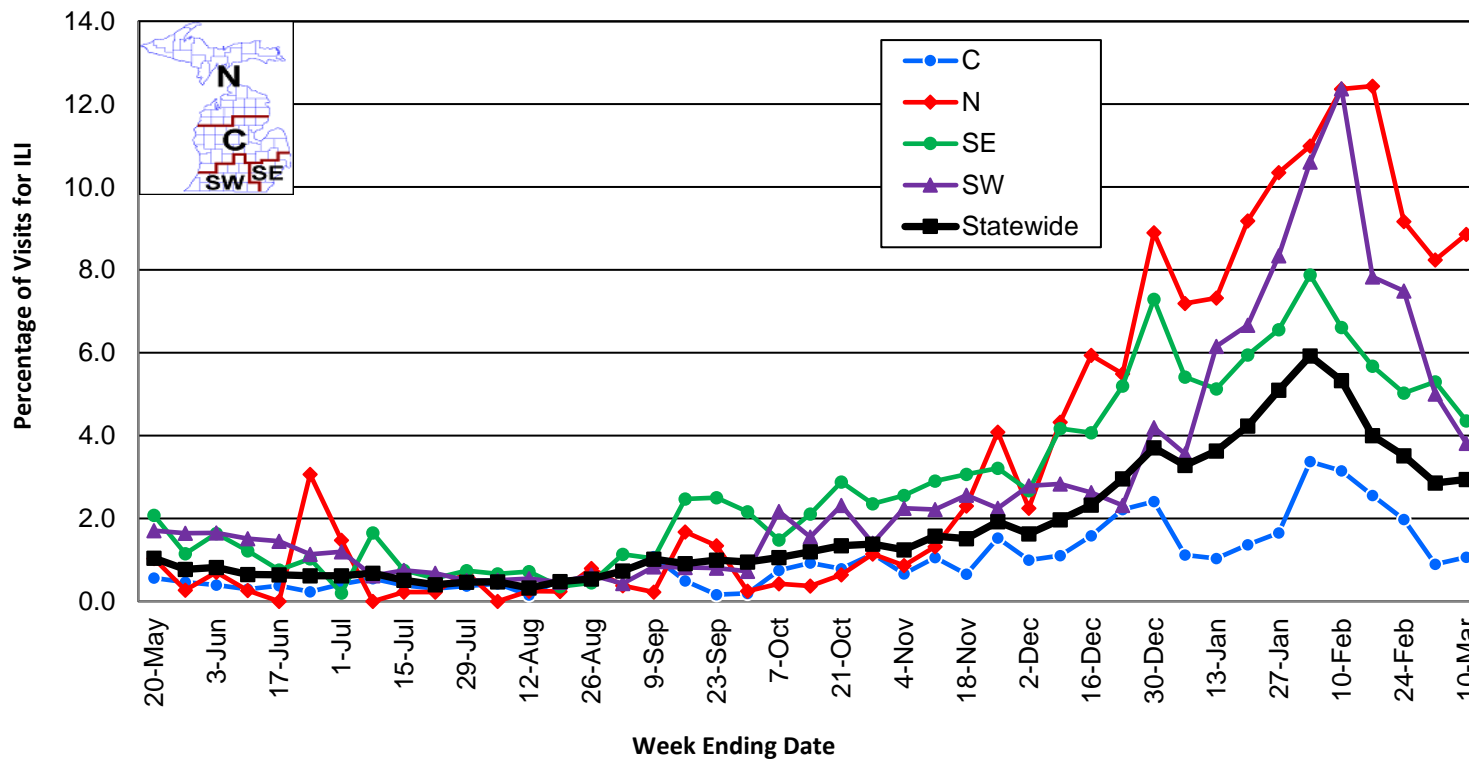
### Influenza-associated Pediatric Mortality

Two (2) pediatric influenza deaths (A/H3) have been confirmed by MDHHS to date for the 2017-2018 flu season. Nationally, one hundred twenty-eight (128) influenza-associated pediatric deaths have been reported thus far for the 2017-2018 flu season.

- Number of reports by region: 32 total [C(9), N(3), SE(12), SW(8)]
- Proportion of visits due to ILI: ↔ 2.9 % (regional baseline\*: 1.8%)
- A total of 345 patient visits due to ILI were reported out of 11,731 office visits

\*Regional baseline is developed by calculating the mean percentage of patient visits for ILI during non-influenza weeks for the previous three seasons and adding two standard deviations.

Percentage of Visits for Influenza-like Illness (ILI)  
Reported by Sentinel Providers, Statewide and Regions  
2016-17 and 2017-18 Flu Seasons



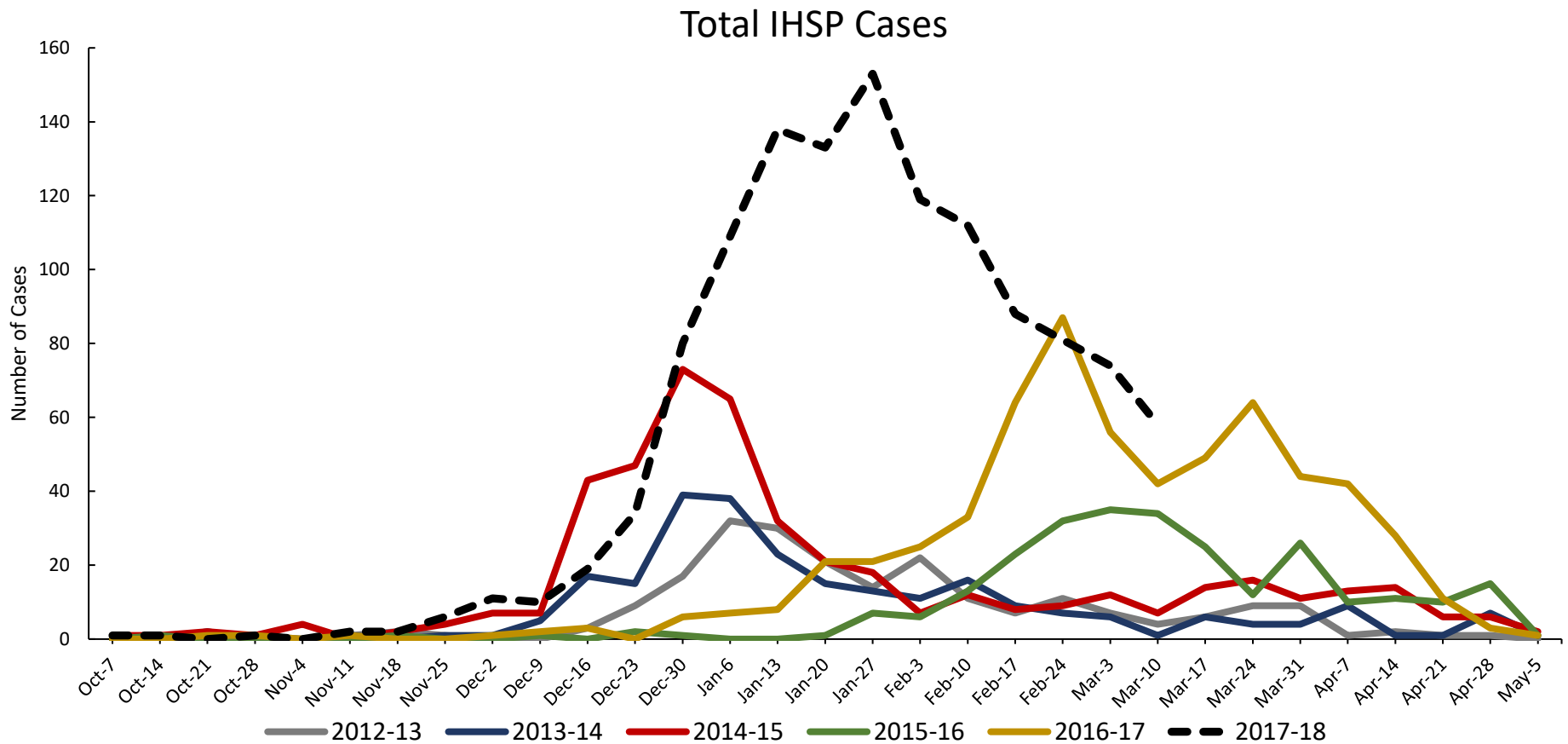
**Become a Sentinel Provider! Contact:**  
[EckelS1@michigan.gov](mailto:EckelS1@michigan.gov)

### National Surveillance

In the United States, 3.3% of outpatient visits were due to influenza-like illness, which is above the national baseline of 2.2%.

### Influenza Hospitalization Surveillance Project

The CDC Influenza Hospitalization Surveillance Project (IHSP) provides population-based rates of hospitalization due to severe influenza-related illness through active surveillance and chart review of lab-confirmed cases from Oct. 1, 2017 until Apr. 30, 2018, for Clinton, Eaton, Ingham, Genesee, and Washtenaw counties. Since Oct. 1, there have been a total of **1,232 (105 pediatric, 1,127 adult)** influenza-related hospitalizations reported in the catchment area for the 2017-2018 season.

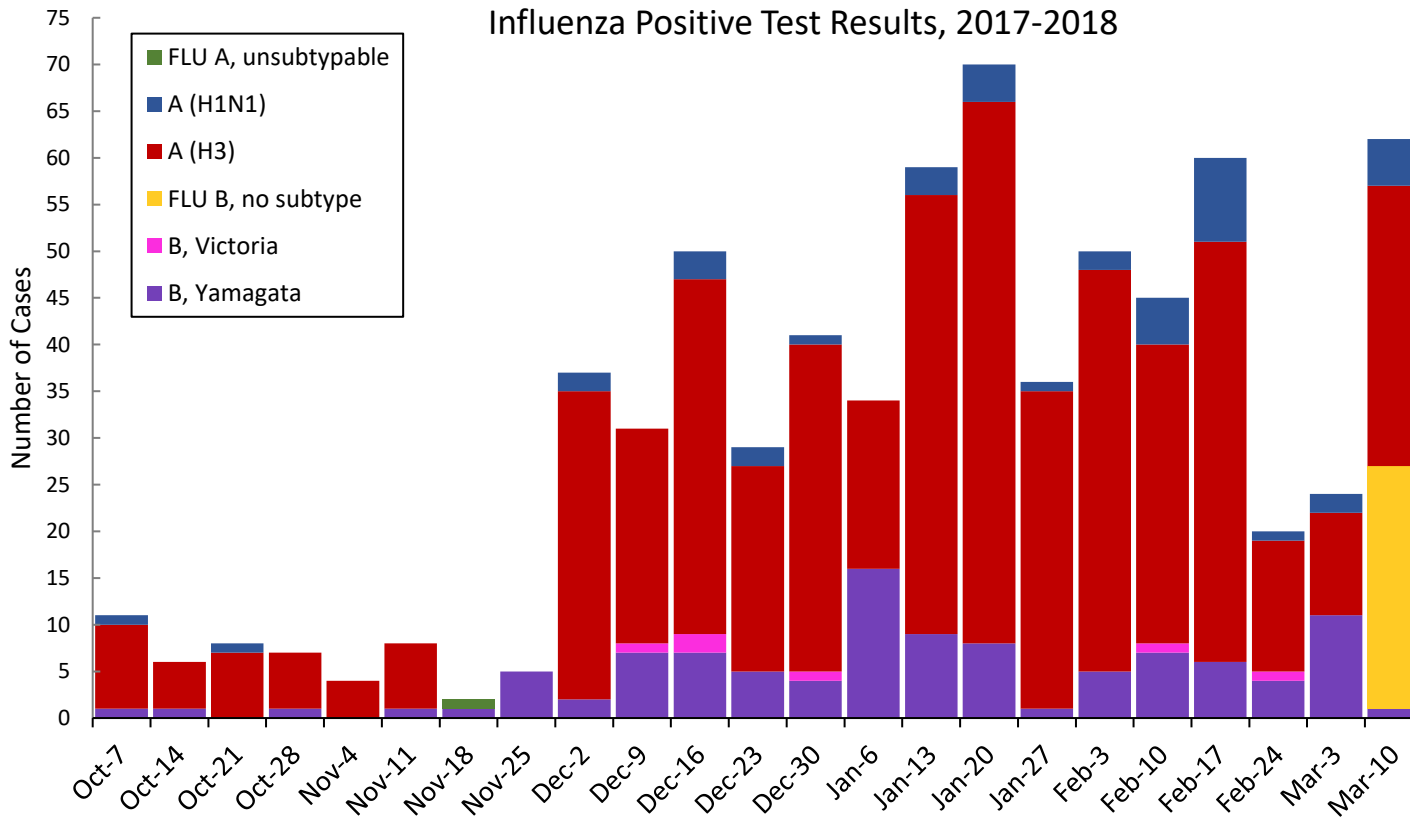


Genesee County was added in 2012-2013

Washtenaw County was added in 2017-2018

MDHHS Bureau of Laboratories reported 62 new positive influenza (21C, 6N, 2SE, 23SW).

Respiratory Virus	# Positive Respiratory Virus Results by Region				Overall Total
	C	N	SE	SW	
2009 A/H1N1pdm	8	3	18	16	<b>45</b>
Influenza A/H3	198	39	99	199	<b>535</b>
Influenza B	27	14	42	52	<b>135</b>
<b>Total</b>	<b>233</b>	<b>56</b>	<b>159</b>	<b>267</b>	<b>715</b>



\*Based on STARLIMS MDHHS BOL Testing Portal

Note: Flu B subtyping will be reported based on MDHHS BOL testing runs (roughly each month) and will be backtracked into this graph

Most recent MDHHS BOL Flu B subtyping run: **March 7, 2018**.

## Michigan Sentinel Clinical Lab Respiratory Virus Data

Ten (10) sentinel clinical labs (2SE, 2SW, 6C, 0N) reported during this week.

### SE Region

- Influenza A: elevated; continued substantial decreases
- Influenza B: elevated; steady
- Parainfluenza: low
- RSV: moderately elevated; steady or decreasing
- Adenovirus: low
- hMPV: modestly elevated; steady

### Central Region

- Influenza A: moderately elevated; overall steady or slightly increasing
- Influenza B: modestly elevated; overall steady or slightly increasing
- Parainfluenza: no activity
- RSV: low to modestly elevated; steady
- Adenovirus: low or sporadic
- hMPV: low to slightly elevated

### SW Region

- Influenza A: elevated; substantially decreasing
- Influenza B: elevated; steady or slightly decreasing
- Parainfluenza: no activity
- RSV: moderately elevated; steady or decreasing
- Adenovirus: low
- hMPV: low or slightly elevated

### North Region

- No data available

There were 2 (0N, 1C, 0SE, 1SW) new respiratory viral outbreaks reported to MDHHS during this time period. Respiratory outbreaks for the 2017-2018 season are listed in the table below.

Facility Type	C	N	SE	SW	Total	2015-2016 Total	2016-2017 Total
Schools: K-12 & College	9		2	3	14	10	25
Long-term Care / Assisted Living Facility	84	10	53	57	204	60	138
Healthcare Facility	2		1		3	11	23
Daycare	2			1	3	2	3
Homeless Shelter						0	1
Correctional Facility	1	4	1	2	8	2	2
Other						2	3
<b>Total</b>	<b>98</b>	<b>14</b>	<b>57</b>	<b>63</b>	<b>232</b>	<b>87</b>	<b>195</b>

## Did you know?

Congregate setting outbreaks of viral respiratory illnesses are required to be reported to your local health department? See:

- [Influenza Guidance for Healthcare Providers](#)
- [Guideline for influenza and Respiratory Virus Outbreaks in Long-Term Care Facilities](#)

## FluBytes

- [Tests Turn Up Low-Path H7N1 Avian Flu at Texas Farm](#)
- [FDA Committee Recommends Influenza Vaccine Strains For the 2018-19 Flu Season](#)
- [Seqirus Answers Call for Better and Faster Influenza Vaccine Technologies](#)

## MDHHS Contributors

**Bureau of Family Health Services -**

**Bureau of Epidemiology and Population Health –**  
S. Bidol, MPH, S. Eckel, MPH, S. Kim, MPH, M. Ladisky

**Bureau of Labs –** B. Robeson, MT, V. Vavricka, MS

For questions or to be added to the distribution list, please contact Seth Eckel at [EckelS1@michigan.gov](mailto:EckelS1@michigan.gov)