



Michigan Flu Focus

Weekly Influenza Surveillance Report



Editor: Seth Eckel, MPH
Co-Editor: Sue Kim, MPH

Editor Email: EckelS1@michigan.gov

August 10, 2018

Vol. 15; No. 35

Week Ending August 4, 2018 | WEEK 31

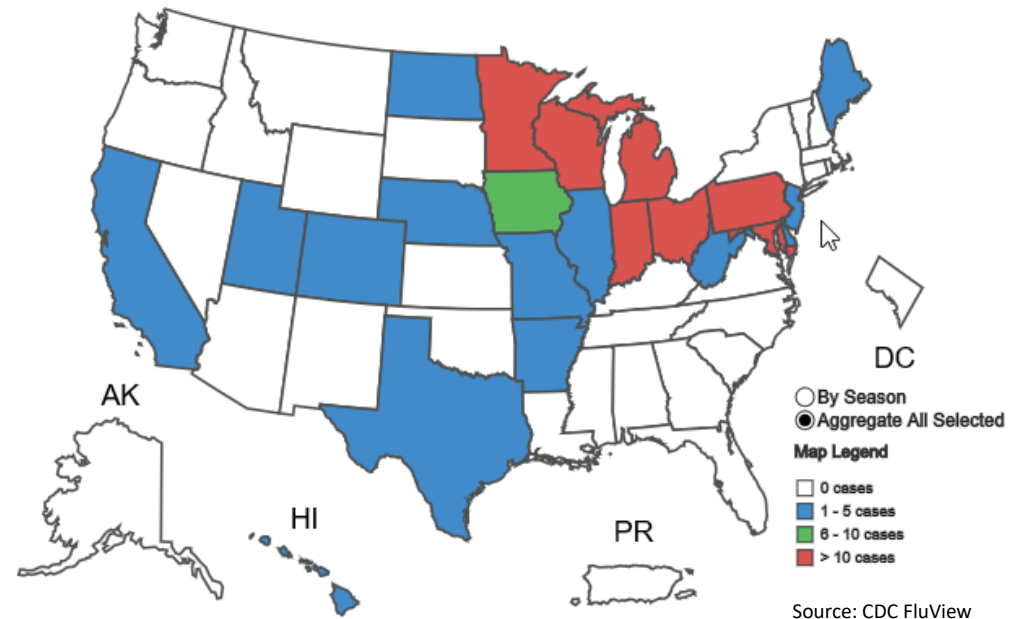
Updates of Interest

The Michigan Department of Health and Human Services (MDHHS) and the Centers for Disease Control & Prevention (CDC) have identified two confirmed cases of influenza A(H1N2)v that sickened two attendees of the Fowlerville Family Fair following exposure to swine. Both are children <18 years of age, were not hospitalized, and are recovering or have fully recovered from their illness. No human-to-human transmission has been identified to date. The fair took place July 23-28, 2018, and pigs from the fair tested positive for swine influenza on July 27. These are among the first A(H1N2)v virus infections detected in the United States in 2018.

As agricultural fair season in Michigan stretches from June through September (<https://mafe.info/events/>), it is important to consider influenza in patients with influenza-like illness (ILI) during the summer months. Patients with ILI should be asked about any swine exposure in the week prior to illness onset. If a patient is suspected of having a swine variant influenza infection, contact an MDHHS epidemiologist to arrange testing at the state public health lab.

To help local health departments respond quickly to suspected influenza outbreaks associated with swine, MDHHS has developed resources, which can be accessed at the Communicable Disease Information and Resources website (www.michigan.gov/cdinfo under Influenza).

Novel Influenza Cases by State, 2010-2018



Source: CDC FluView

FluBytes

- [Obesity Increases the Duration of Influenza A Virus Shedding in Adults](#)
- [Novel Antiviral Shows Promise for Those at High Risk for Flu Complications](#)

Congregate Setting Respiratory Virus Outbreaks

There was 1 (0N, 0C, 1SE, 0SW) new respiratory virus outbreak reported to MDHHS since June 1, 2018.

Respiratory outbreaks for the 2018 summer season are listed in the table below.

Facility Type	C	N	SE	SW	Summer 2018 Total	2017-18 Total
Schools: K-12 & College						14
Long-term Care / Assisted Living Facility	1		1	2	4	239
Healthcare Facility						4
Daycare						4
Homeless Shelter						
Correctional Facility						10
Other						
Total	1		1	2	4	271

Did you know?

Congregate setting outbreaks of viral respiratory illnesses are required to be reported to your local health department? See:

- [Influenza Guidance for Healthcare Providers](#)
- [Guideline for influenza and Respiratory Virus Outbreaks in Long-Term Care Facilities](#)

Influenza-like Illness Activity

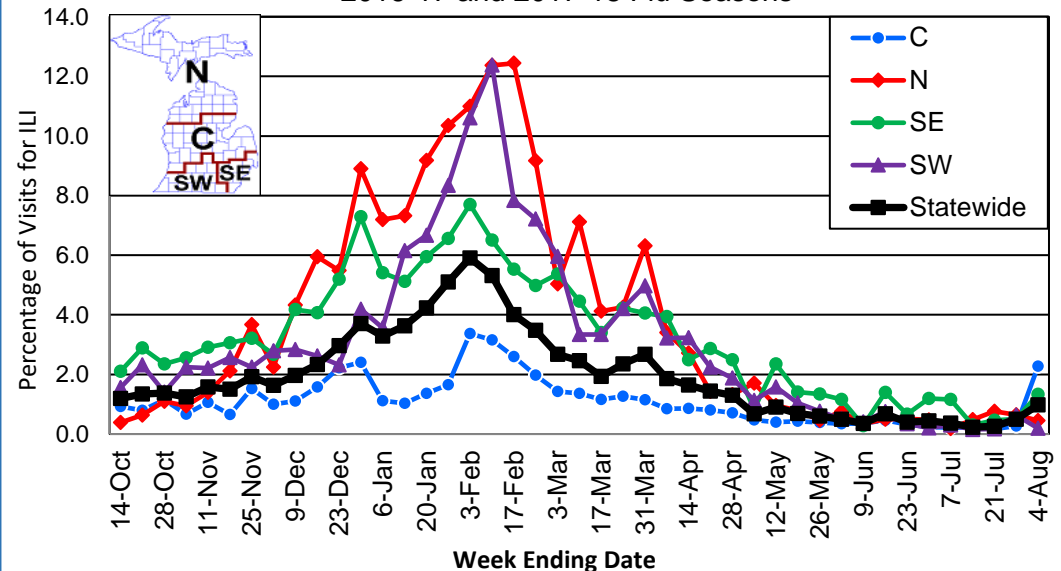
During the 2017-18 influenza season, national activity peaked the week ending February 3, 2018 at 7.7%.

Michigan activity also peaked the week ending February 3, 2018 at 5.9% and reported above the baseline of 2.2% for 15 weeks

- Total number of reports by region: 19 (4C, 2N, 10SE, 3SW)
- Proportion of visits due to ILI: ↑ 1.0% (regional baseline*: 1.8%)
- 49 patient visits due to ILI were reported out of 5,013 office visits

*Regional baseline is developed by calculating the mean percentage of patient visits for ILI during non-influenza weeks for the previous three seasons and adding two standard deviations.

Percentage of Visits for Influenza-like Illness (ILI) Reported by Sentinel Providers, Statewide and Regions 2016-17 and 2017-18 Flu Seasons



Become a sentinel provider!

Contact Cristi Bramer at BramerC@michigan.gov

MDHHS Bureau of Laboratories (BOL)

There was 1 (0N, 0C, 1SE, 0SW) new respiratory virus result reported to MDHHS since June 1, 2018. Positive respiratory viruses for the 2018 summer season are listed in the table below.

Respiratory Virus	# Positive Respiratory Virus Results by Region				Summer 2018 Total	2017-18 Total
	C	N	SE	SW		
2009 A/H1N1pdm			1	1	2	82
Influenza A/H3						580
Influenza B						225
Total			1	1	2	887

Michigan Sentinel Clinical Lab Respiratory Virus Data

Seven (7) sentinel clinical labs (1SE, 2SW, 4C, 0N) reported during this time period

SE Region

- Influenza A: no activity
- Influenza B: no activity
- Parainfluenza: no data available
- RSV: no activity
- Adenovirus: no data available
- hMPV: no data available

Central Region

- Influenza A: no activity
- Influenza B: no activity
- Parainfluenza: low
- RSV: no activity
- Adenovirus: sporadic
- hMPV: no activity

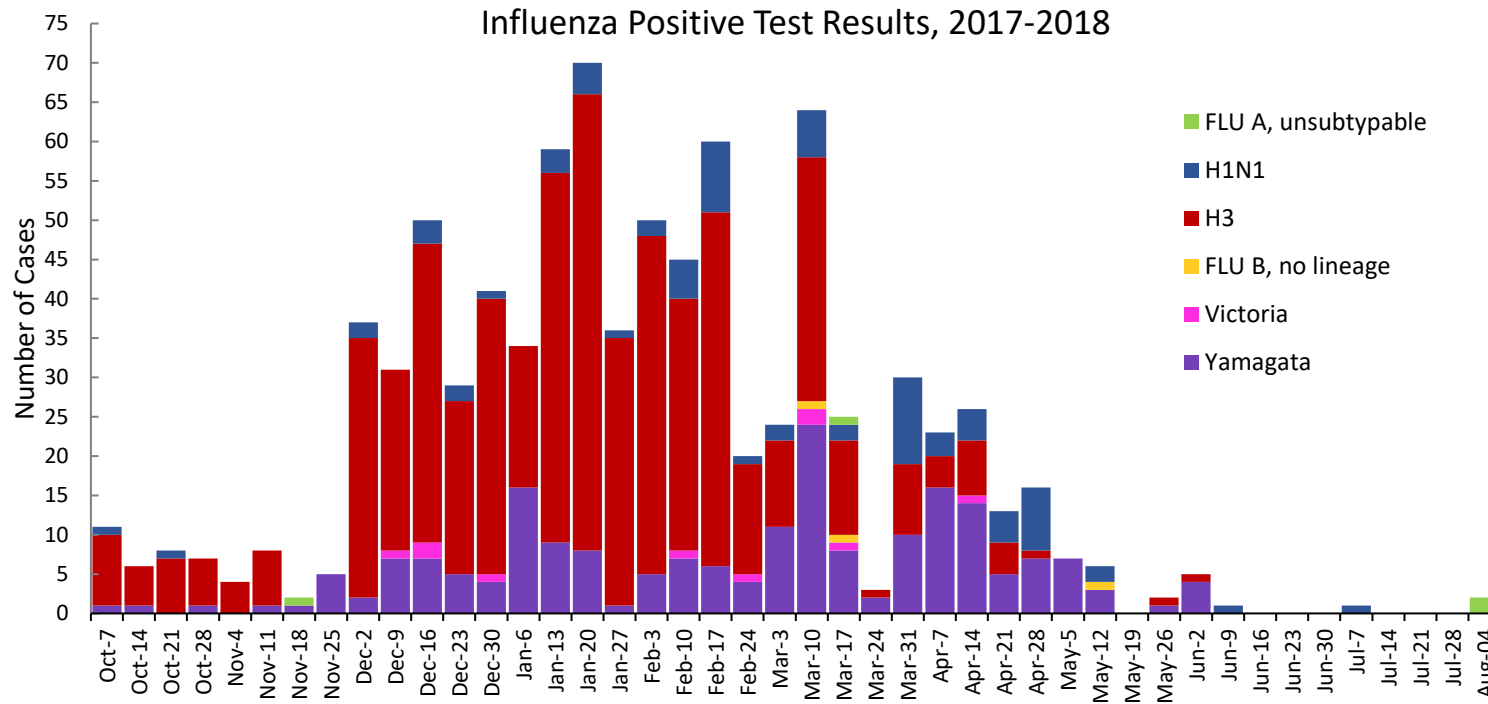
SW Region

- Influenza A: no activity
- Influenza B: no activity
- Parainfluenza: low/sporadic
- RSV: no activity
- Adenovirus: no activity
- hMPV: no activity

North Region

- No data available

Influenza Positive Test Results, 2017-2018

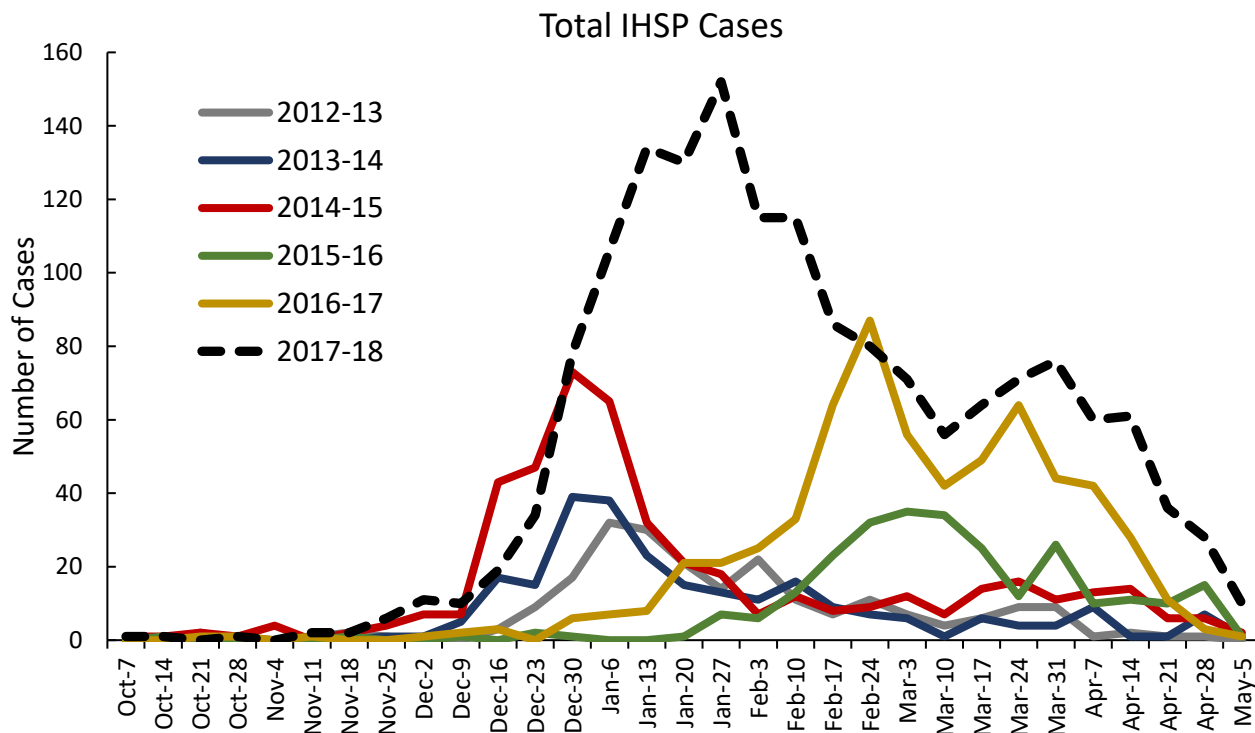


*Based on STARLIMS MDHHS BOL Testing Portal

Note: Flu B subtyping will be reported based on MDHHS BOL testing runs (roughly each month) and will be backtracked into this graph
Most recent MDHHS BOL Flu B subtyping run: **June 6, 2018**.

Influenza Hospitalization Surveillance Project

The CDC Influenza Hospitalization Surveillance Project (IHSP) provides population-based rates of hospitalization due to severe influenza-related illness through active surveillance and chart review of lab-confirmed cases from Oct. 1, 2017 until Apr. 30, 2018, for Clinton, Eaton, Ingham, Genesee, and Washtenaw counties. A total of **1,616 (148 pediatric, 1,468 adult)** influenza-related hospitalizations have been reported in the catchment area for the 2017-2018 season.



Genesee County was added in 2012-2013

Washtenaw County was added in 2017-2018

*Surveillance period has ended as of April 30, 2018 and will resume October 1, 2018

Influenza-associated Pediatric Mortality

Two (2) pediatric influenza deaths (A/H3) have been confirmed by MDHHS for the 2017-2018 flu season.

Nationally, 179 influenza-associated pediatric deaths have been reported since October 1, 2017.

MDHHS Contributors

Bureau of Family Health Services

Bureau of Epidemiology & Population Health:

S. Bidol, MPH, S. Eckel, MPH, S. Kim, MPH, M. Ladisky, MPH

Bureau of Labs:

B. Robeson, MT, V. Vavricka, MS

For questions or to be added to the distribution list, please contact Seth Eckel at EckelS1@michigan.gov