



Michigan Flu Focus

Weekly Influenza Surveillance Report



Editor: Sue Kim, MPH

Editor Email: KimS2@michigan.gov

May 24, 2019

Vol. 16; No.33

Week Ending May 18, 2019 | WEEK 20

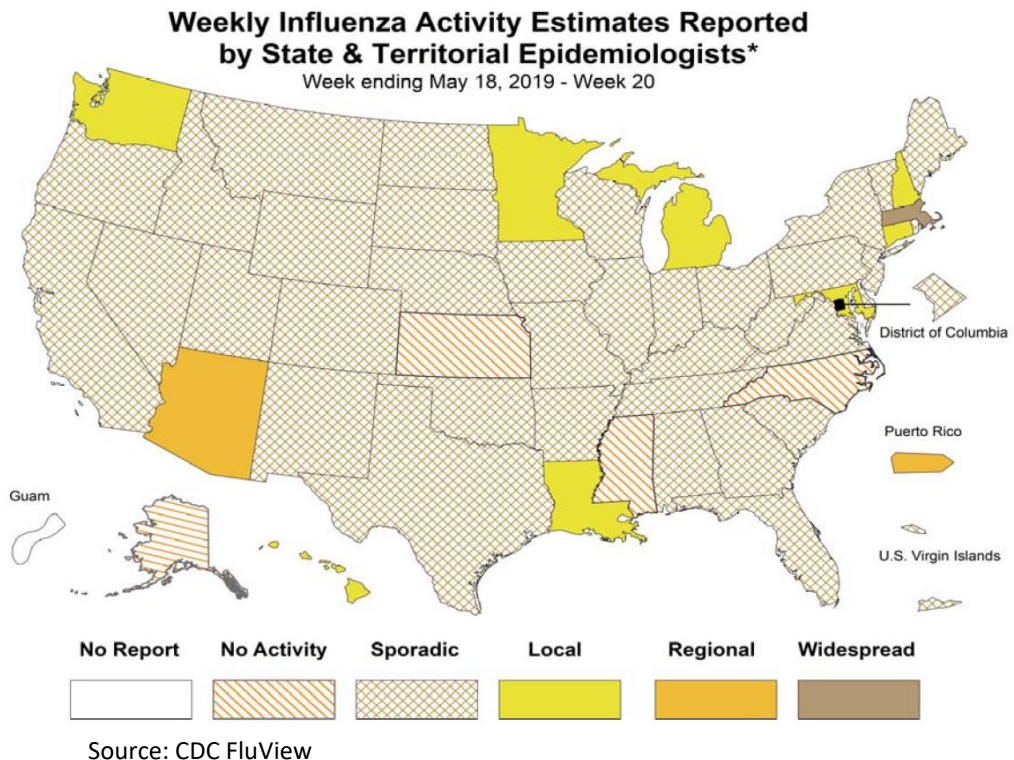
Michigan Influenza Activity
No Activity
Sporadic
Local
Regional
Widespread

*Clicking on the current activity level will direct you to the CDC webpage defining each activity level for the geographic spread of influenza

Updates of Interest

The Michigan Department of Health and Human Services (MDHHS) has updated the Swine Variant Influenza Toolkit and Swine Variant Influenza Toolkit Templates for Michigan Local Health Departments for 2019. The Swine Variant Influenza Toolkit Templates contain editable templates to help local health departments in planning for and responding to suspected influenza outbreaks associated with swine at agricultural fairs and exhibits.

These resources can be accessed at the Communicable Disease Information and Resources website at www.michigan.gov/cdinfo/ under the Influenza topic; Swine Variant Influenza.



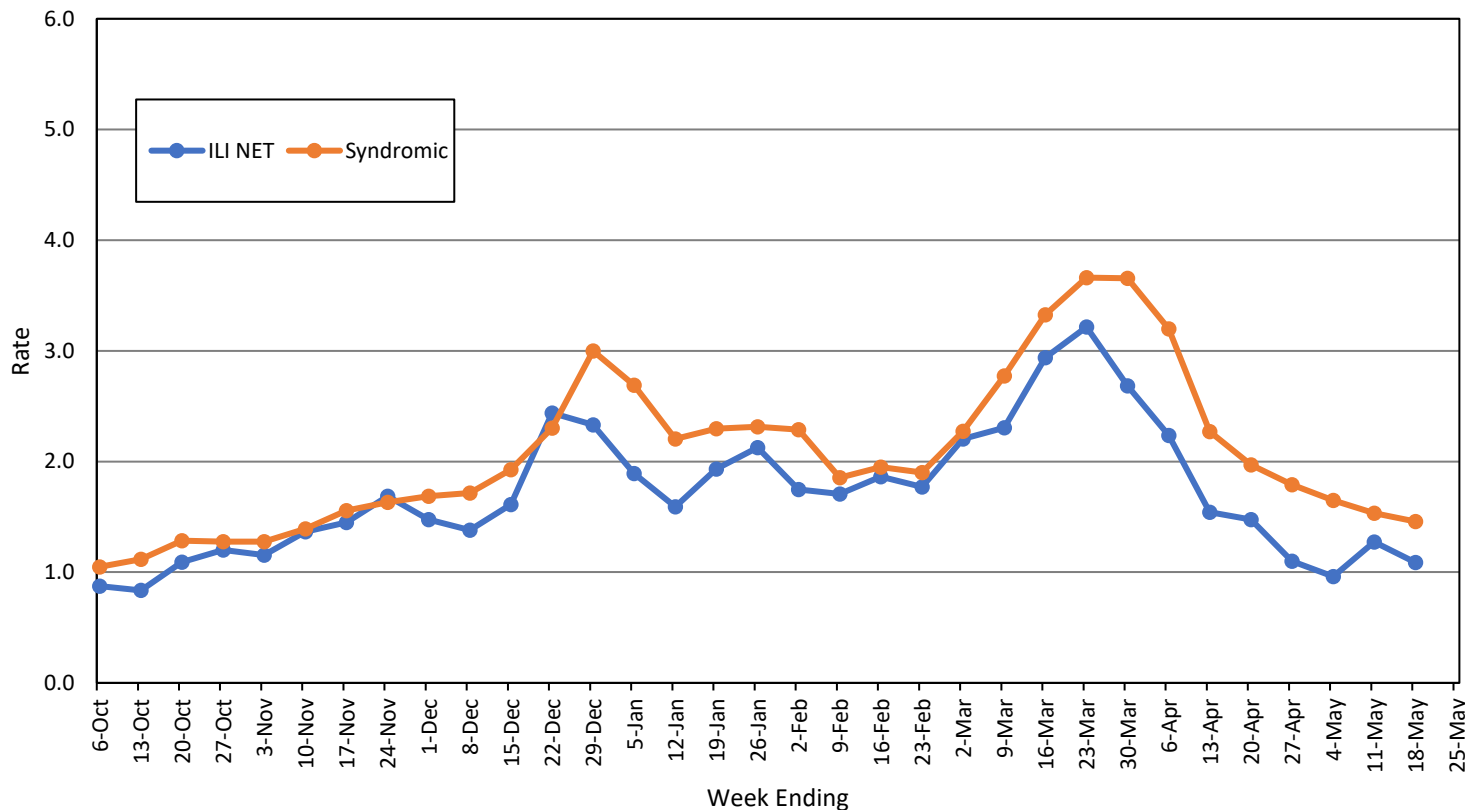
Influenza-associated Pediatric Mortality

One (1) pediatric influenza (A/H1N1-09) death has been confirmed by MDHHS for the 2018-2019 flu season. Nationally, 111 influenza-associated pediatric deaths have been reported thus far for the 2018-2019 flu season.

- Number of reports by region: 26 total [C(5), N(2), SE(14), SW(5)]
- Proportion of visits due to ILI: ↓ 1.1% (regional baseline*: 1.8%)
- A total of 108 patient visits due to ILI were reported out of 9,927 office visits

*Regional baseline is developed by calculating the mean percentage of patient visits for ILI during non-influenza weeks for the previous three seasons and adding two standard deviations.

MI Statewide ILI NET and Syndromic Surveillance Rates, 2018-2019



National Surveillance

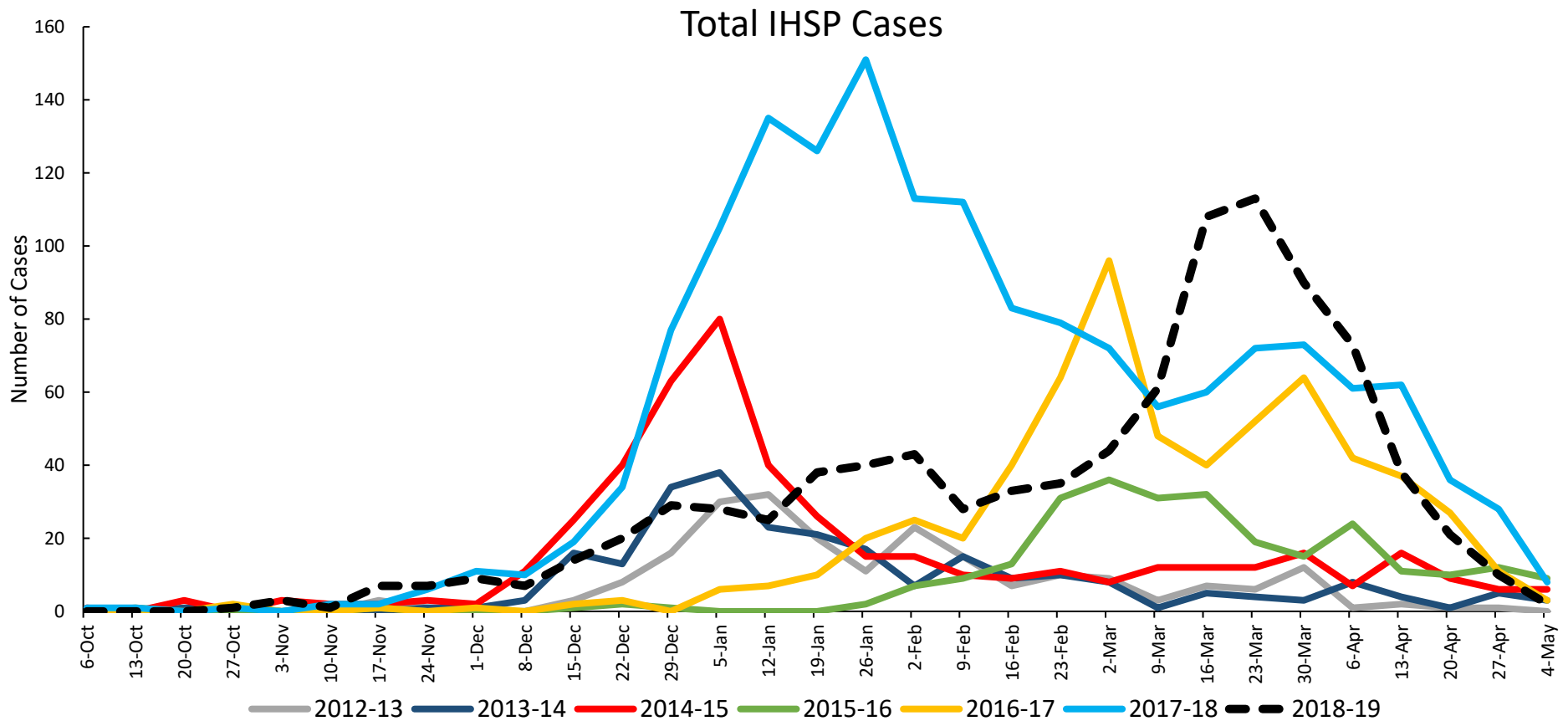
In the United States, 1.5% of outpatient visits were due to influenza-like illness (ILI), which is below the national baseline of 2.2%.

Become a sentinel provider!

Contact Shelly Doebler at DoeblerM@michigan.gov

Influenza Hospitalization Surveillance Project

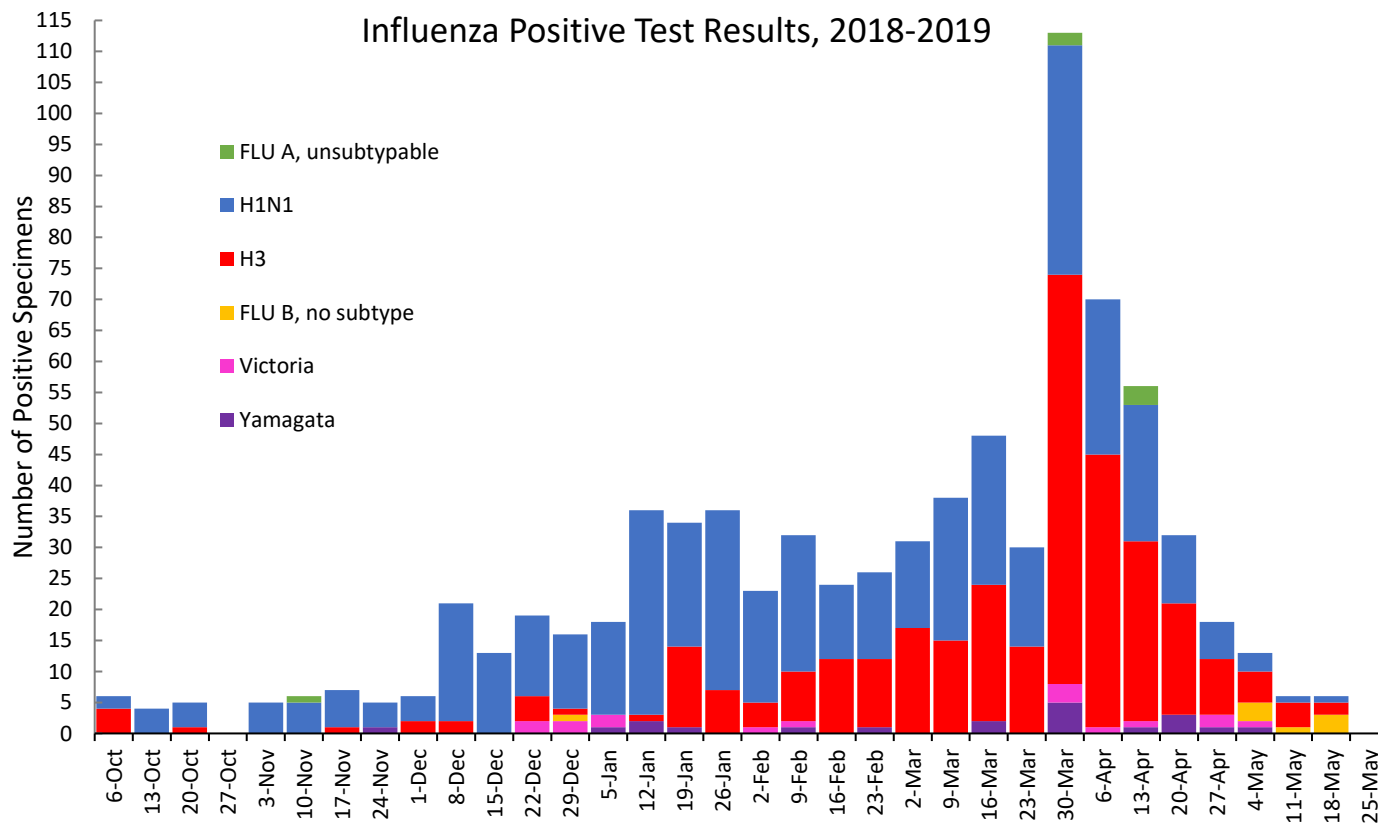
The CDC Influenza Hospitalization Surveillance Project (IHSP) provides population-based rates of hospitalization due to severe influenza-related illness through active surveillance and chart review of lab-confirmed cases from Oct. 1, 2018 until Apr. 30, 2019 for Clinton, Eaton, Ingham, Genesee, and Washtenaw counties. Since Oct. 1, there have been **932 (120 pediatric, 812 adult)** influenza-related hospitalizations reported in the catchment area for the 2018-2019 season.



Washtenaw County was added in 2017-2018

MDHHS Bureau of Laboratories reported 9 new positive influenza results (6C, 0N, 1SE, 2SW)

Respiratory Virus	# Positive Respiratory Virus Results by Region				Overall Total	2017-18 Total
	C	N	SE	SW		
2009 A/H1N1pdm	211	24	57	150	442	80
Influenza A/H3	160	12	26	121	319	579
Influenza B	5	11	12	16	44	220
Total	376	47	95	287	805	879



Based on STARLIMS MDHHS BOL Testing Portal

Note: Flu B subtyping will be reported based on MDHHS BOL testing runs (roughly each month) and will be backtracked into this graph

Most recent MDHHS BOL Flu B subtyping run: **May 2, 2019**

Michigan Sentinel Clinical Lab Respiratory Virus Data

Eight (8) sentinel clinical labs (1SE, 1SW, 6C, 0N) reported during this week

SE Region

- Influenza A: low; decreasing
- Influenza B: moderate; increasing
- Parainfluenza: moderate; decreasing
- RSV: low
- Adenovirus: low
- hMPV: slightly elevated; decreasing

Central Region

- Influenza A: low-slightly elevated; decreasing
- Influenza B: low-slightly elevated; variable
- Parainfluenza: low-slightly elevated
- RSV: sporadic-low
- Adenovirus: low
- hMPV: low-slightly elevated

SW Region

- Influenza A: low
- Influenza B: very low
- Parainfluenza: slightly elevated; increasing
- RSV: very low
- Adenovirus: low
- hMPV: low; decreasing

North Region

- Influenza A: no data available
- Influenza B: no data available
- Parainfluenza: no data available
- RSV: no data available
- Adenovirus: no data available
- hMPV: no data available

There was 1 new respiratory viral outbreak (OC, ON, 1SE, OSW) reported to MDHHS during this time period. Respiratory outbreaks for the 2018-2019 season are listed in the table below.

Facility Type	C	N	SE	SW	Total	2016-2017 Total	2017-2018 Total
Schools: K-12 & College	3	2	3	1	9	25	14
Long-term Care / Assisted Living Facility	18	6	23	13	60	138	238
Healthcare Facility	1	0	0	0	1	23	4
Daycare	0	0	0	0	0	3	4
Homeless Shelter	0	0	1	0	1	1	0
Correctional Facility	2	5	0	1	8	2	10
Other	0	0	0	0	0	3	0
Total	24	13	27	15	79	195	270

Did you know?

Congregate setting outbreaks of viral respiratory illnesses are required to be reported to your local health department? See:

- [Influenza Guidance for Healthcare Providers](#)
- [Guideline for influenza and Respiratory Virus Outbreaks in Long-Term Care Facilities](#)

Swine Variant Influenza Toolkit

The Swine Variant Influenza Toolkit will help local health departments in planning for and responding to suspected influenza outbreaks associated with swine at agricultural fairs and exhibits See:

- [Swine Variant Influenza Toolkit](#)
- [Swine Variant Influenza Toolkit Templates Document](#)

FluBytes

- [Influenza Surveillance Updates](#)
- [US Scientists Have Developed and Validated a Clinical Decision Guideline \(CDG\) for Flu Testing in Emergency Departments](#)
- [High-tech Fix Hopes to Tackle H3N2 Vaccine Problems](#)
- [Increasing Influenza Vaccination in Health Care Workers](#)
- [Flu Vaccine Tied to Lower Mortality in Heart Failure Patients](#)

MDHHS Contributors

Bureau of Epidemiology and Population Health
S. Bidol, MPH, S. Kim, MPH

Bureau of Family Health Services
M. Doebler, MPH

Bureau of Laboratories
B. Robeson, MT, V. Vavricka, MS

For questions or to be added to the distribution list, please contact Sue Kim at KimS2@michigan.gov