



# Michigan Flu Focus

## Weekly Influenza Surveillance Report



Editor: Seth Eckel, MPH  
Co-Editor: Macey Ladisky

Editor Email: [EckelS1@michigan.gov](mailto:EckelS1@michigan.gov)

February 2, 2018

Vol. 15; No. 16

Week Ending January 27, 2018 | WEEK 4

| Michigan Influenza Activity |
|-----------------------------|
| No Activity                 |
| Sporadic                    |
| Local                       |
| Regional                    |
| <b><u>Widespread</u></b>    |

\*Clicking on the current activity level will direct you to the CDC webpage defining each activity level for the geographic spread of influenza

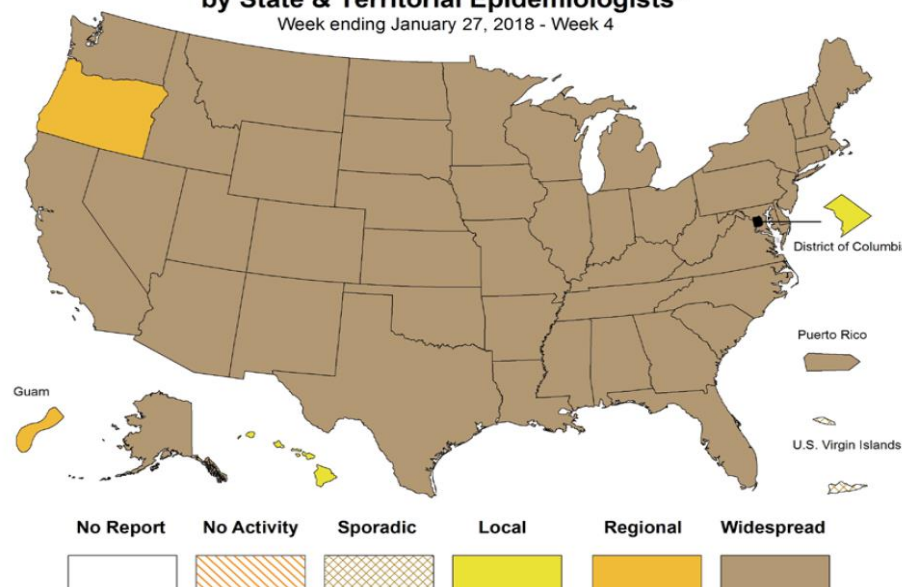
### Updates of Interest

Schools across at least a dozen of states have closed their doors for a day or longer this flu season! Know how you can help prevent the spread of influenza in Michigan schools by:

- Having students stay home until well
- Getting vaccinated – it’s not too late to receive the flu vaccine
- Promoting hand hygiene
- Covering coughs and sneezes with a tissue or sleeve

### Weekly Influenza Activity Estimates Reported by State & Territorial Epidemiologists\*

Week ending January 27, 2018 - Week 4



### Influenza-associated Pediatric Mortality

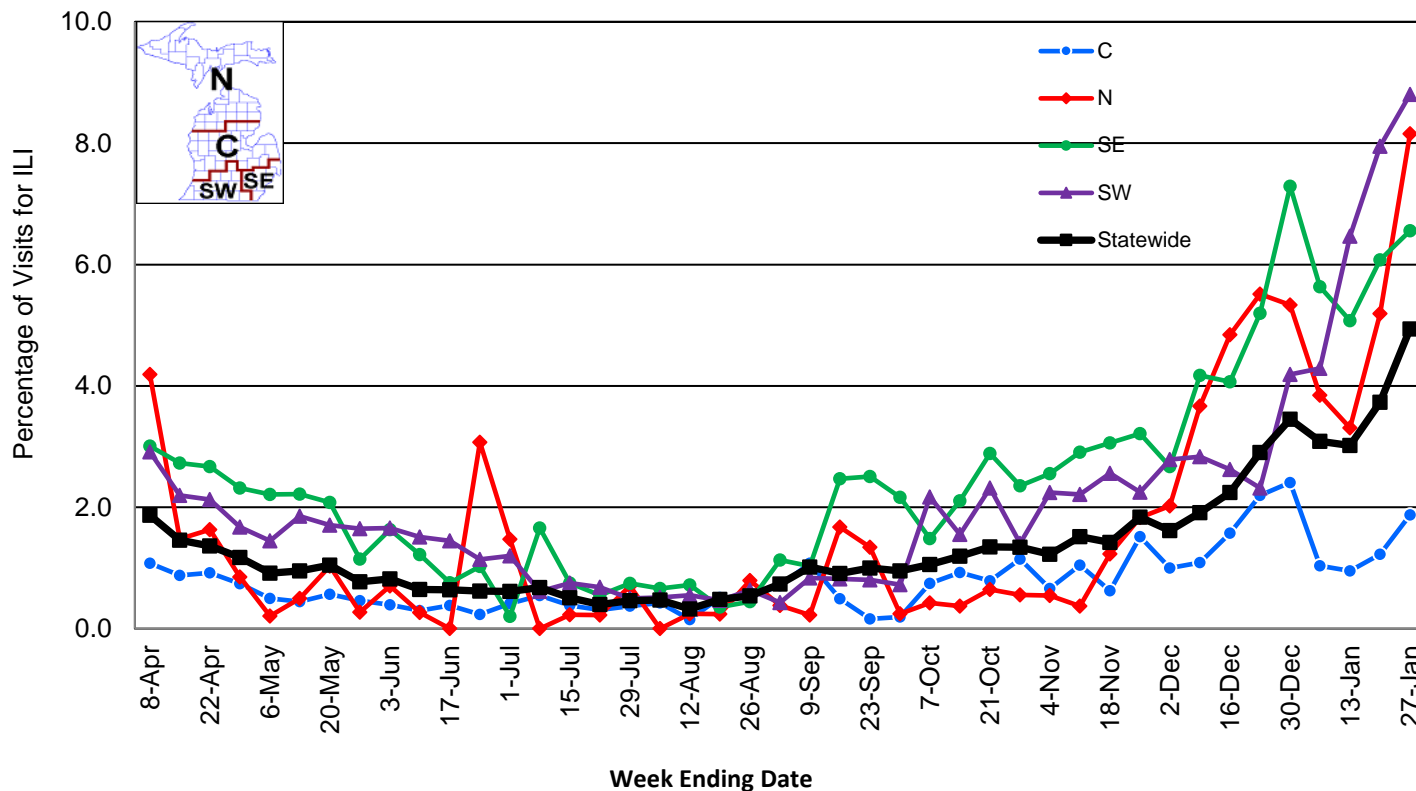
No pediatric influenza deaths have been confirmed by MDHHS to date for the 2017-2018 flu season. Nationally, fifty-three (53) influenza-associated pediatric deaths have been reported thus far for the 2017-2018 flu season.

- Number of reports by region: 37 total [C(11), N(3), SE(15), SW(8)]
- Proportion of visits due to ILI: ↑ 4.9 % (regional baseline\*: 1.8%)
- A total of 653 patient visits due to ILI were reported out of 13,217 office visits

\*Regional baseline is developed by calculating the mean percentage of patient visits for ILI during non-influenza weeks for the previous three seasons and adding two standard deviations.

**Become a Sentinel Provider! Contact:**  
[EckelS1@michigan.gov](mailto:EckelS1@michigan.gov)

Percentage of Visits for Influenza-like Illness (ILI)  
 Reported by Sentinel Providers, Statewide and Regions  
 2016-17 and 2017-18 Flu Seasons

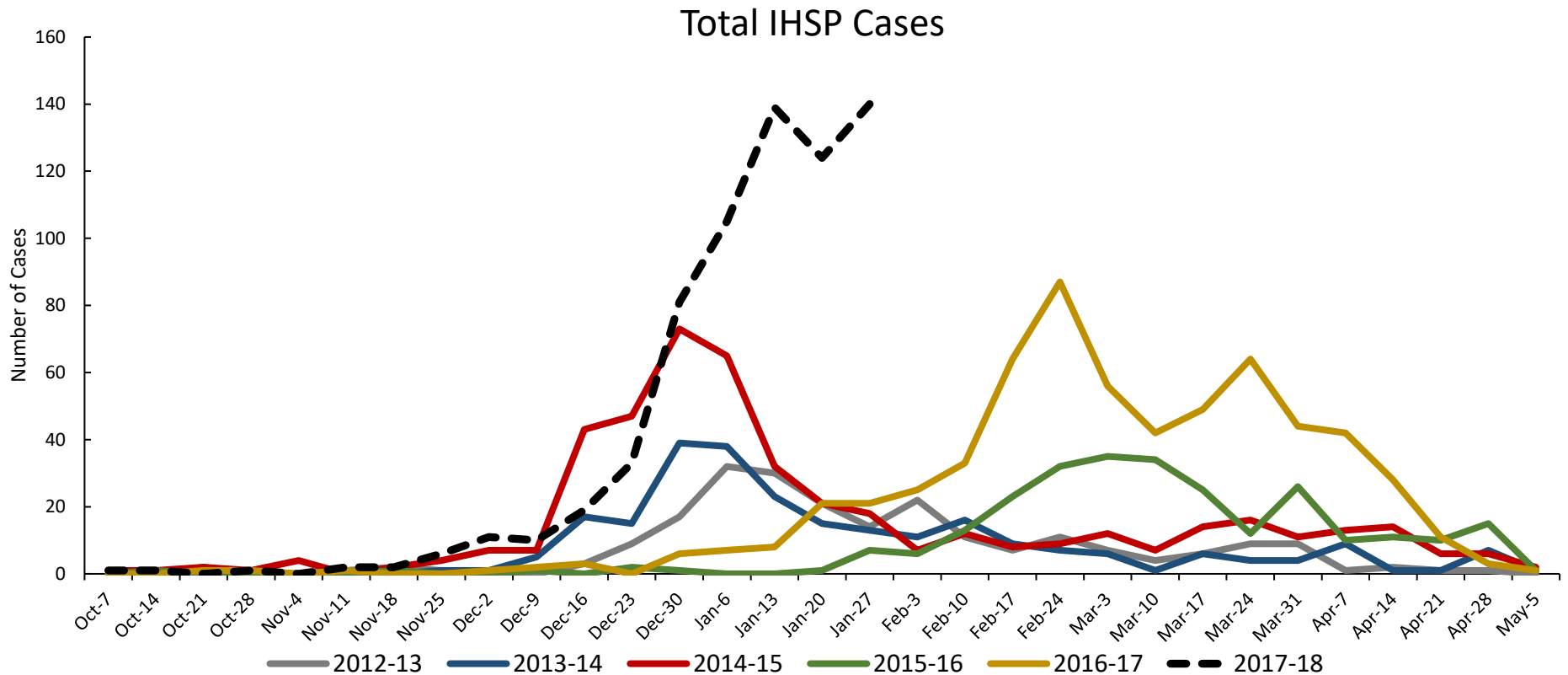


**National Surveillance**

In the United States, 7.1% of outpatient visits were due to influenza-like illness, which is above the national baseline of 2.2%.

### Influenza Hospitalization Surveillance Project

The CDC Influenza Hospitalization Surveillance Project (IHSP) provides population-based rates of hospitalization due to severe influenza-related illness through active surveillance and chart review of lab-confirmed cases from Oct. 1, 2017 until Apr. 30, 2018, for Clinton, Eaton, Ingham, Genesee, and Washtenaw counties. Since Oct. 1, there have been a total of **675 (50 pediatric, 625 adult)** influenza-related hospitalizations reported in the catchment area for the 2017-2018.



Genesee County was added in 2012-2013

Washtenaw County was added in 2017-2018

MDHHS Bureau of Laboratories reported 41 new positive influenza (14C, 1N, 4SE, 22SW).

| Respiratory Virus | # Positive Respiratory Virus Results by Region |    |     |     | Overall Total |
|-------------------|--|----|-----|-----|---------------|
|                   | C  | N  | SE  | SW  |               |
| 2009 A/H1N1pdm    | 2  | 1  | 10  | 7   | 20            |
| Influenza A/H3    | 119  | 30 | 88  | 110 | 347           |
| Influenza B       | 8  | 9  | 40  | 16  | 73            |
| Total             | 129  | 40 | 138 | 133 | 440           |

## Michigan Sentinel Clinical Lab Respiratory Virus Data

Ten (10) sentinel clinical labs (3SE, 2SW, 5C, 0N) reported during this week.

### SE Region

- Influenza A: very sharply elevated; very sharply increasing
- Influenza B: elevated; sharply increasing
- Parainfluenza: low to slightly elevated
- RSV: elevated; some brisk increases
- Adenovirus: slightly elevated
- hMPV: elevated; some increases

### Central Region

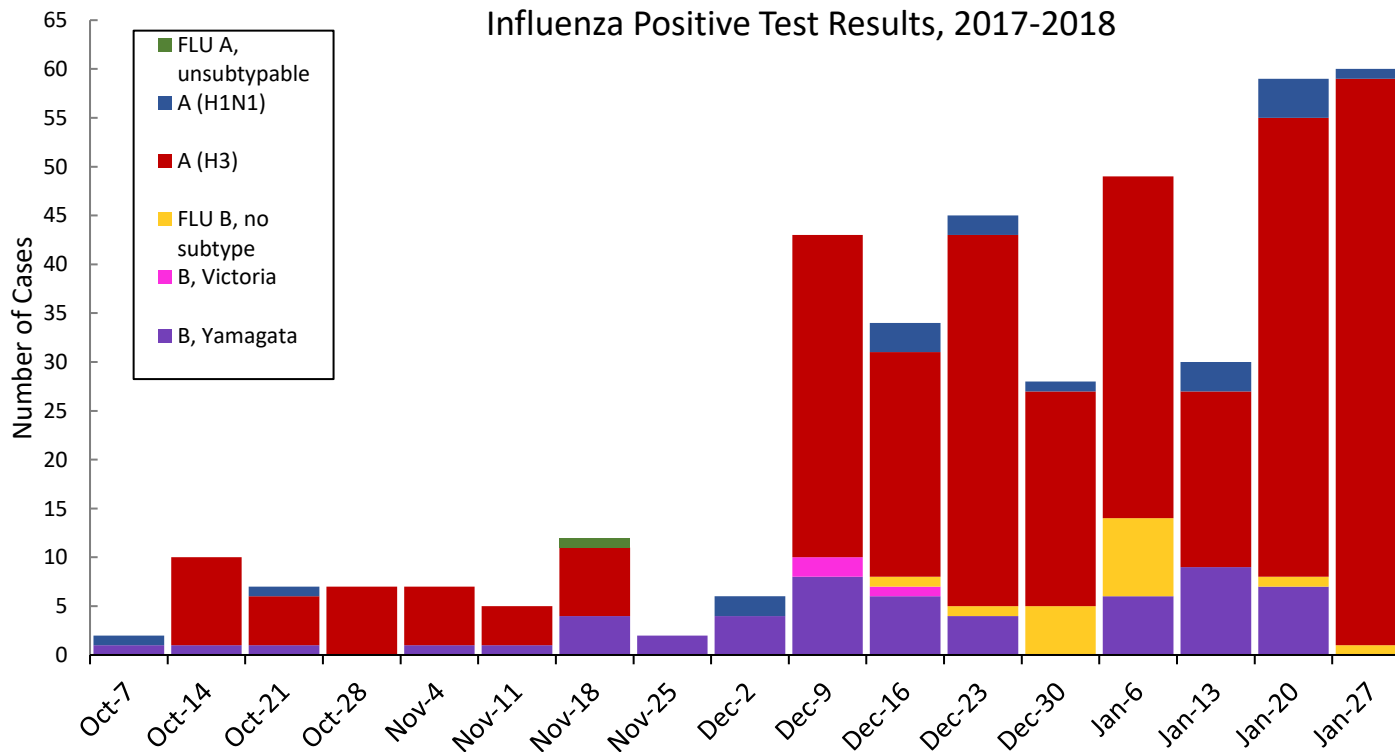
- Influenza A: elevated; briskly increasing
- Influenza B: low to slightly elevated; some increases
- Parainfluenza: sporadic
- RSV: elevated; some increases
- Adenovirus: low
- hMPV: low

### SW Region

- Influenza A: very sharply elevated; very sharply increasing
- Influenza B: elevated; some increases
- Parainfluenza: sporadic
- RSV: elevated; some brisk increases
- Adenovirus: slightly elevated; increasing
- hMPV: low

### North Region

- No data available



\*Based on STARLIMS MDHHS BOL Testing Portal

Note: Flu B subtyping will be reported based on MDHHS BOL testing runs (roughly each month) and will be backtracked into

There were 43 (1N, 16C, 13SE, 13SW) new respiratory viral outbreaks reported to MDHHS during this time Period. Respiratory outbreaks for the 2017-2018 season are listed in the table below.

| Facility Type                             | C         | N         | SE        | SW        | Total      | 2015-2016 Total | 2016-2017 Total |
|---|-----------|-----------|-----------|-----------|------------|-----------------|-----------------|
| Schools: K-12 & College                   | 5         |           | 2         | 1         | 8          | 10              | 25              |
| Long-term Care / Assisted Living Facility | 68        | 9         | 31        | 40        | 148        | 60              | 138             |
| Healthcare Facility                       | 2         |           |           |           | 2          | 11              | 23              |
| Daycare                                   | 2         |           |           | 1         | 3          | 2               | 3               |
| Homeless Shelter                          |           |           |           |           |            | 0               | 1               |
| Correctional Facility                     |           | 2         | 1         | 1         | 4          | 2               | 2               |
| Other                                     |           |           |           |           |            | 2               | 3               |
| <b>Total</b>                              | <b>77</b> | <b>11</b> | <b>34</b> | <b>43</b> | <b>165</b> | <b>87</b>       | <b>195</b>      |

## Did you know?

Congregate setting outbreaks of viral respiratory illnesses are required to be reported to your local health department? See:

- [Influenza Guidance for Healthcare Providers](#)
- [Guideline for influenza and Respiratory Virus Outbreaks in Long-Term Care Facilities](#)

## FluBytes

- [Study Bolsters Link Between Flu and Heart Attacks](#)
- [Aggressive Widespread Flu Strain is Hitting Michigan Schools, Seniors Hardest](#)
- [Influenza Epidemic: Can Itchy, Red Hives Be an Early Sign of Flu?](#)
- [North, South Korea Report Flu Outbreaks Ahead of Winter Olympics](#)

## MDHHS Contributors

**Bureau of Family Health Services -**

**Bureau of Epidemiology and Population Health –**  
S. Bidol, MPH, S. Eckel, MPH, S. Kim, MPH, M. Ladisky

**Bureau of Labs –** B. Robeson, MT, V. Vavricka, MS

For questions or to be added to the distribution list, please contact Seth Eckel at [EckelS1@michigan.gov](mailto:EckelS1@michigan.gov)