



# Michigan Flu Focus

## Weekly Influenza Surveillance Report



Editor: Seth Eckel, MPH

Editor Email: [EckelS1@michigan.gov](mailto:EckelS1@michigan.gov)

March 02, 2018

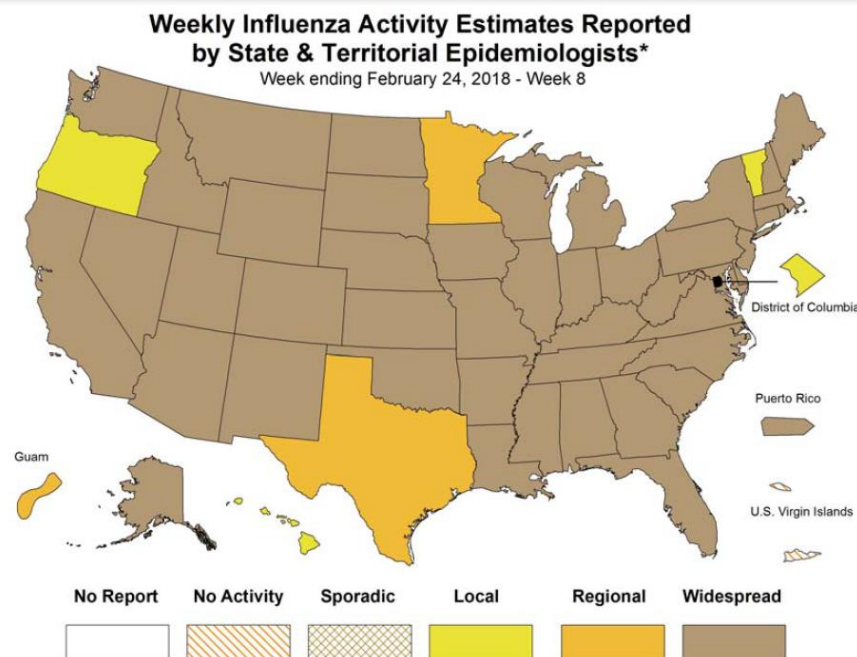
Vol. 15; No. 20

Co-Editor: Sue Kim

Week Ending February 24, 2018 | WEEK 8

Michigan Influenza Activity
No Activity
Sporadic
Local
Regional
<b><u>Widespread</u></b>

\*Clicking on the current activity level will direct you to the CDC webpage defining each activity level for the geographic spread of influenza



### Updates of Interest

The National Institute of Allergy and Infectious Diseases (NIAID) recently shared a strategy for developing a universal flu vaccine that includes a profile of what such a vaccine would accomplish and the different research areas that scientists would need to tackle to bring more protective vaccines for seasonal and pandemic influenza to market. Click [here](#) for more details from CIDRAP News.

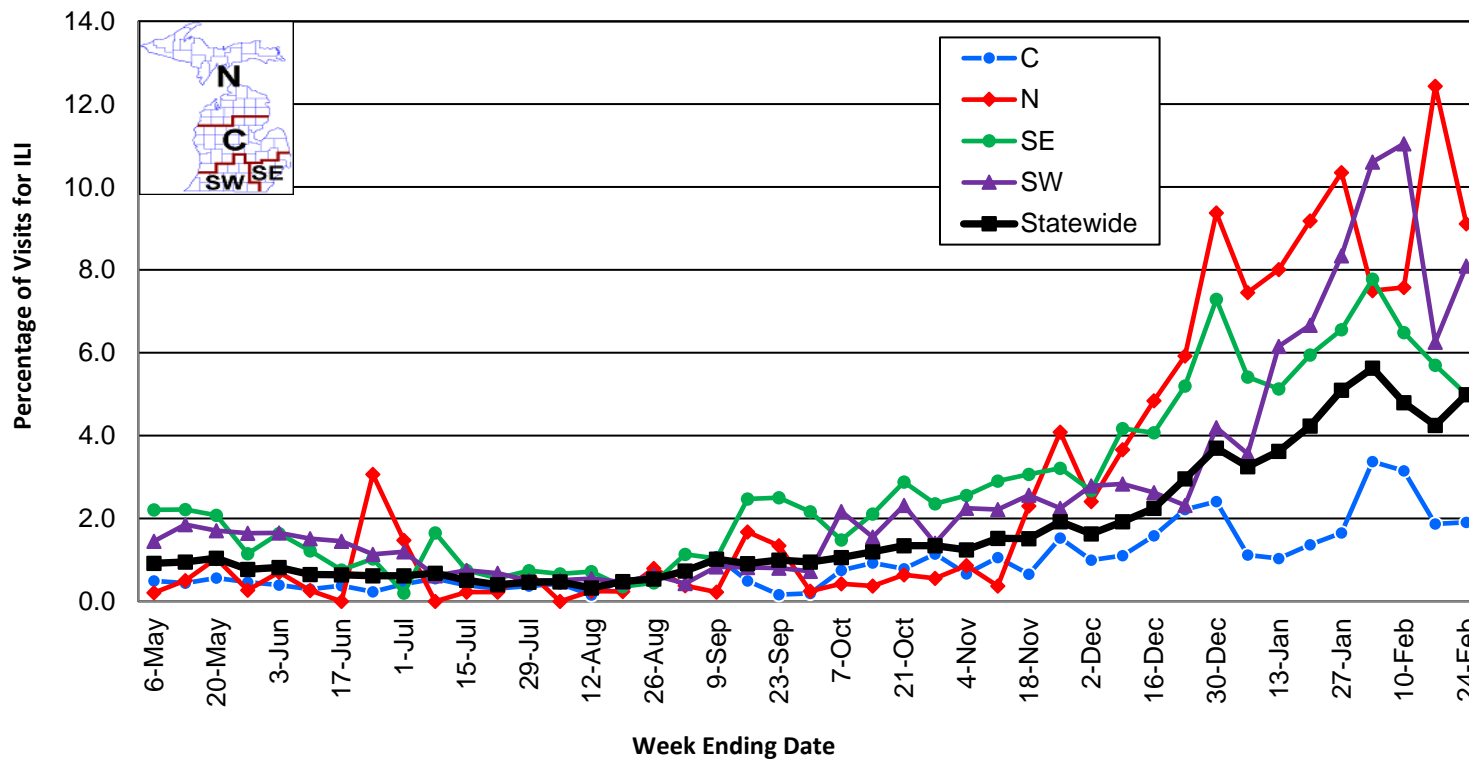
**Influenza-associated Pediatric Mortality**

Two pediatric influenza deaths (A/H3) have been confirmed by MDHHS to date for the 2017-2018 flu season. Nationally, one hundred fourteen (114) influenza-associated pediatric deaths have been reported thus far for the 2017-2018 flu season.

- Number of reports by region: 33 total [C(8), N(4), SE(15), SW(6)]
- Proportion of visits due to ILI:  $\uparrow$  5.0 % (regional baseline\*: 1.8%)
- A total of 460 patient visits due to ILI were reported out of 9,222 office visits

\*Regional baseline is developed by calculating the mean percentage of patient visits for ILI during non-influenza weeks for the previous three seasons and adding two standard deviations.

Percentage of Visits for Influenza-like Illness (ILI)  
Reported by Sentinel Providers, Statewide and Regions  
2016-17 and 2017-18 Flu Seasons



**Become a Sentinel Provider! Contact:**  
[EckelS1@michigan.gov](mailto:EckelS1@michigan.gov)

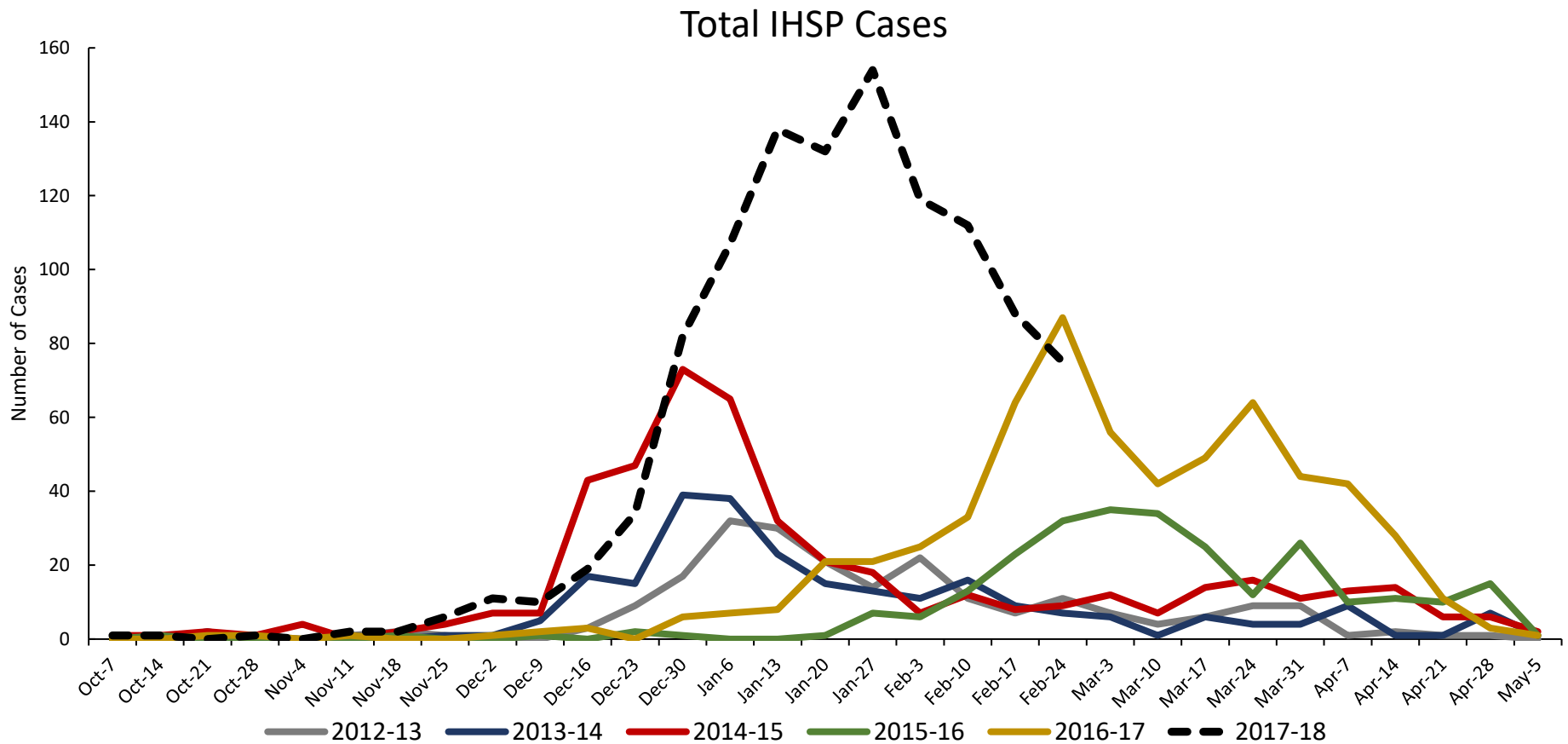
### National Surveillance

In the United States, 5.0% of outpatient visits were due to influenza-like illness, which is above the national baseline of 2.2%.

# Influenza-related Hospitalization Surveillance Week Ending February 24

## Influenza Hospitalization Surveillance Project

The CDC Influenza Hospitalization Surveillance Project (IHSP) provides population-based rates of hospitalization due to severe influenza-related illness through active surveillance and chart review of lab-confirmed cases from Oct. 1, 2017 until Apr. 30, 2018, for Clinton, Eaton, Ingham, Genesee, and Washtenaw counties. Since Oct. 1, there have been a total of **1,094 (89 pediatric, 1,005 adult)** influenza-related hospitalizations reported in the catchment area for the 2017-2018 season.

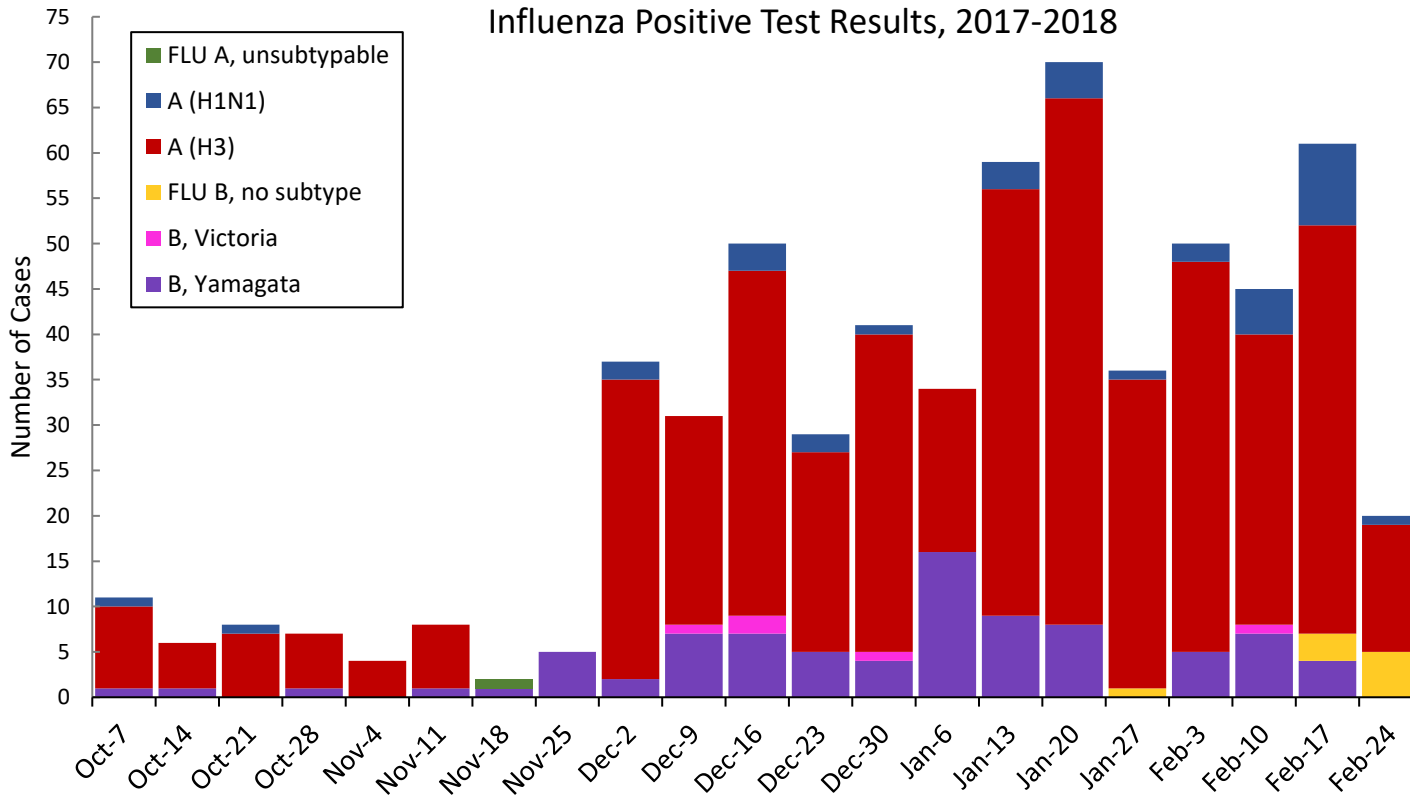


Genesee County was added in 2012-2013

Washtenaw County was added in 2017-2018

MDHHS Bureau of Laboratories reported 24 new positive influenza (7C, 0N, 4SE, 13SW).

Respiratory Virus	# Positive Respiratory Virus Results by Region				Overall Total
	C	N	SE	SW	
2009 A/H1N1pdm	5	3	17	12	<b>37</b>
Influenza A/H3	182	37	97	168	<b>484</b>
Influenza B	21	9	40	31	<b>101</b>
<b>Total</b>	<b>208</b>	<b>49</b>	<b>154</b>	<b>211</b>	<b>622</b>



\*Based on STARLIMS MDHHS BOL Testing Portal

Note: Flu B subtyping will be reported based on MDHHS BOL testing runs (roughly each month) and will be backtracked into this graph

Most recent MDHHS BOL Flu B subtyping run: **February 16th, 2018.**

## Michigan Sentinel Clinical Lab Respiratory Virus Data

Ten (10) sentinel clinical labs (3SE, 2SW, 5C, 0N) reported during this week.

### SE Region

- Influenza A: strongly elevated; notably decreasing trend
- Influenza B: elevated; some increases
- Parainfluenza: low
- RSV: elevated; steady or slightly decreasing
- Adenovirus: low or slightly elevated
- hMPV: elevated; some small increases

### Central Region

- Influenza A: moderately elevated; decreasing trend
- Influenza B: low to modestly elevated; steady
- Parainfluenza: low
- RSV: low to slightly elevated; moderate decreases
- Adenovirus: low
- hMPV: low

### SW Region

- Influenza A: moderately elevated; notably decreasing trend
- Influenza B: elevated; steady
- Parainfluenza: sporadic
- RSV: elevated; further decreases
- Adenovirus: sporadic
- hMPV: low or slightly elevated

### North Region

- No data available

There were 8 (0N, 1C, 3SE, 4SW) new respiratory viral outbreaks reported to MDHHS during this time Period. Respiratory outbreaks for the 2017-2018 season are listed in the table below.

Facility Type	C	N	SE	SW	Total	2015-2016 Total	2016-2017 Total
Schools: K-12 & College	9		2	3	14	10	25
Long-term Care / Assisted Living Facility	82	10	49	55	196	60	138
Healthcare Facility	2		1		3	11	23
Daycare	2			1	3	2	3
Homeless Shelter						0	1
Correctional Facility	1	4	1	2	8	2	2
Other						2	3
<b>Total</b>	<b>96</b>	<b>14</b>	<b>53</b>	<b>61</b>	<b>224</b>	<b>87</b>	<b>195</b>

## Did you know?

Congregate setting outbreaks of viral respiratory illnesses are required to be reported to your local health department? See:

- [Influenza Guidance for Healthcare Providers](#)
- [Guideline for influenza and Respiratory Virus Outbreaks in Long-Term Care Facilities](#)

## FluBytes

- [Drug That Promises to Kill Flu in a Day Approved in Japan](#)
- [Flu Vaccine Linked to Lower Death Risk for Heart Failure Patients](#)
- [World's First Human Case of H7N4 Avian Flu Reported in China](#)

## MDHHS Contributors

**Bureau of Family Health Services -**

**Bureau of Epidemiology and Population Health –**  
S. Bidol, MPH, S. Eckel, MPH, S. Kim, MPH, M. Ladisky

**Bureau of Labs –** B. Robeson, MT, V. Vavricka, MS

For questions or to be added to the distribution list, please contact Seth Eckel at [EckelS1@michigan.gov](mailto:EckelS1@michigan.gov)