



Michigan Flu Focus

Weekly Influenza Surveillance Report



Editor: Sue Kim, MPH

Editor Email: KimS2@michigan.gov

January 25, 2019

Vol. 16; No.16

Week Ending January 19, 2019 | WEEK 3

Michigan Influenza Activity
No Activity
Sporadic
Local
Regional
<u>Widespread</u>

*Clicking on the current activity level will direct you to the CDC webpage defining each activity level for the geographic spread of influenza

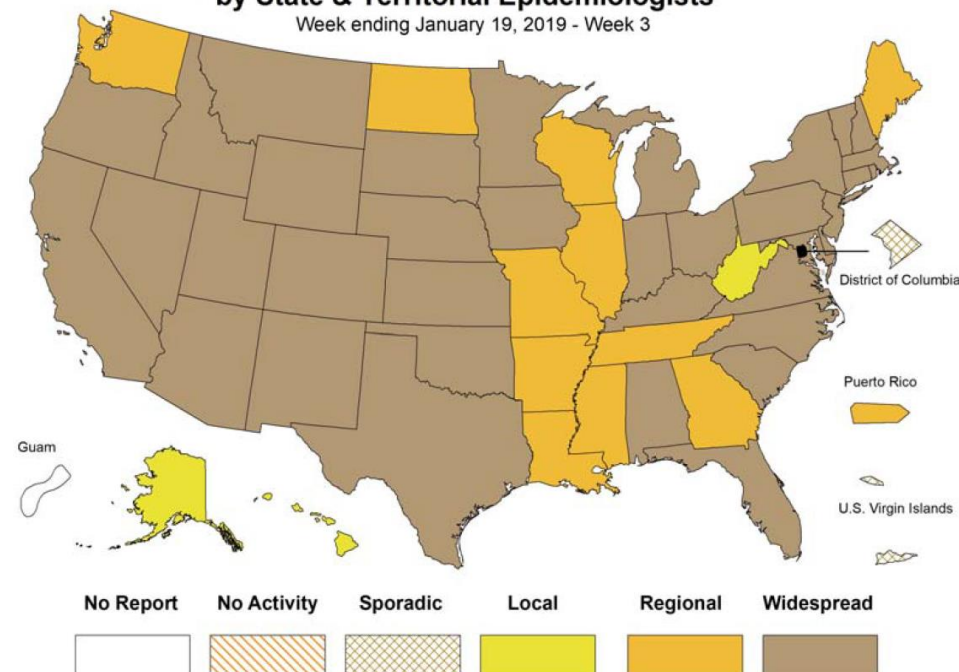
Updates of Interest

The Michigan flu code has officially been increased from 'Regional' activity to 'Widespread' activity for Week 3. This is due to new lab-confirmed increases in parts of the Northern region, expanding activity within the Central region, and ongoing/increasing activity in the SE and SW regions. We are still seeing predominantly A/H1N1, with some A/H3N2 and occasional B's.

See Michigan Influenza Activity (above), for an overview of flu activity definitions.

Weekly Influenza Activity Estimates Reported by State & Territorial Epidemiologists*

Week ending January 19, 2019 - Week 3



Source: CDC FluView

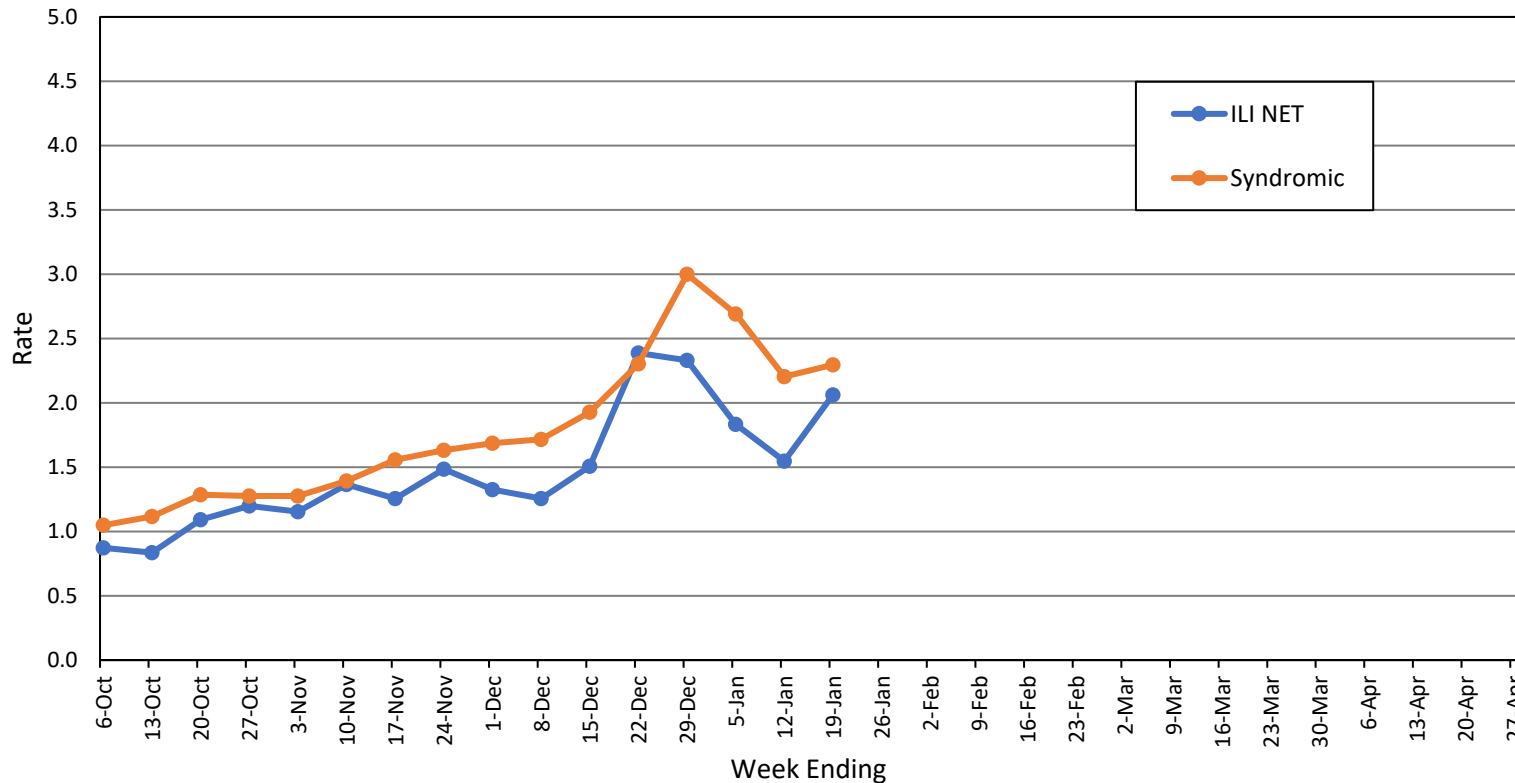
Influenza-associated Pediatric Mortality

One (1) pediatric influenza (A/H1N1-09) death has been confirmed by MDHHS for the 2018-2019 flu season. Nationally, 22 influenza-associated pediatric deaths have been reported thus far for the 2018-2019 flu season.

- Number of reports by region: 36 total [C(11), N(2), SE(15), SW(8)]
- Proportion of visits due to ILI: **↑ 2.1%** (regional baseline*: 1.8%)
- A total of 293 patient visits due to ILI were reported out of 14,209 office visits

*Regional baseline is developed by calculating the mean percentage of patient visits for ILI during non-influenza weeks for the previous three seasons and adding two standard deviations.

MI Statewide ILI NET and Syndromic Surveillance Rates, 2018-2019



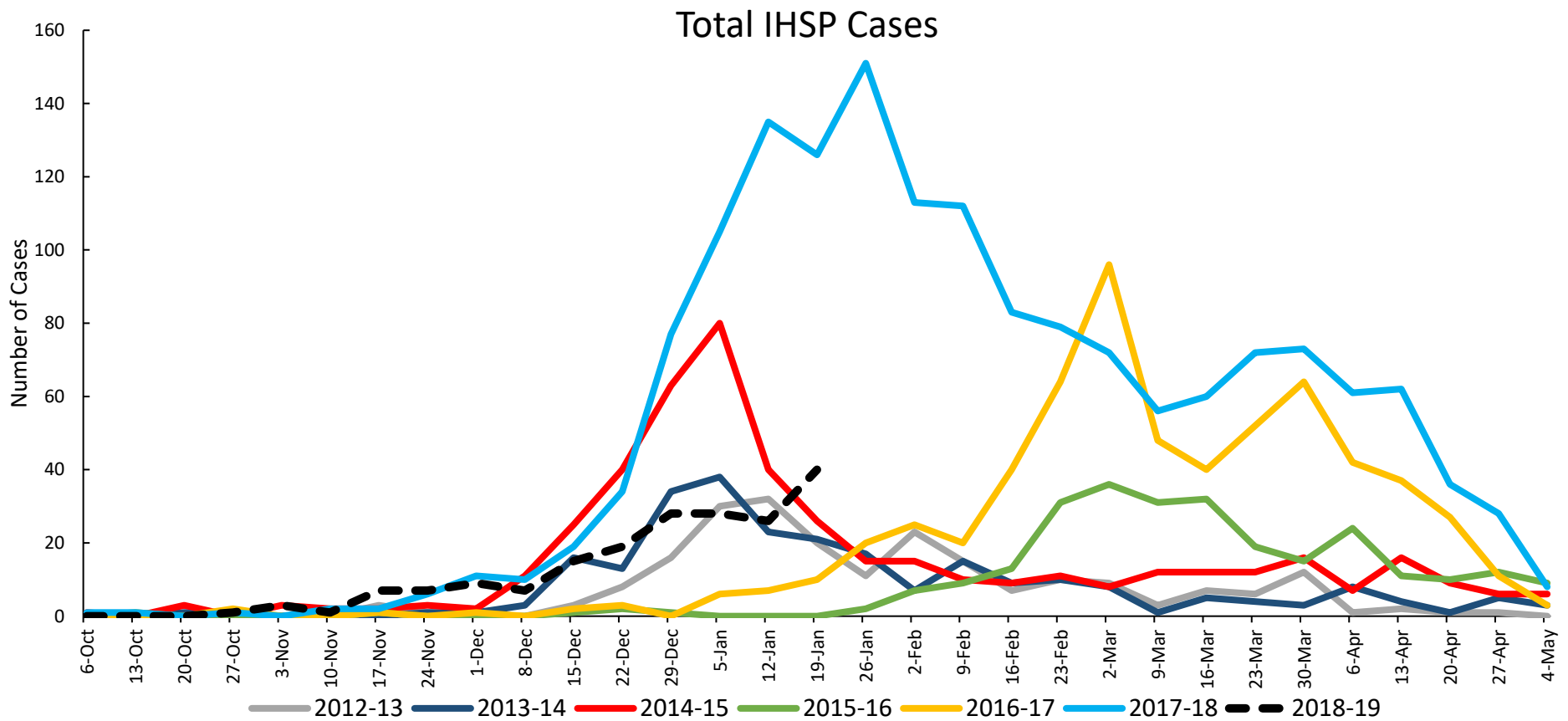
National Surveillance

In the United States, 3.3% of outpatient visits were due to influenza-like illness (ILI), which is above the national baseline of 2.2%.

Become a sentinel provider!
 Contact Shelly Doeblner at DoeblerM@michigan.gov

Influenza Hospitalization Surveillance Project

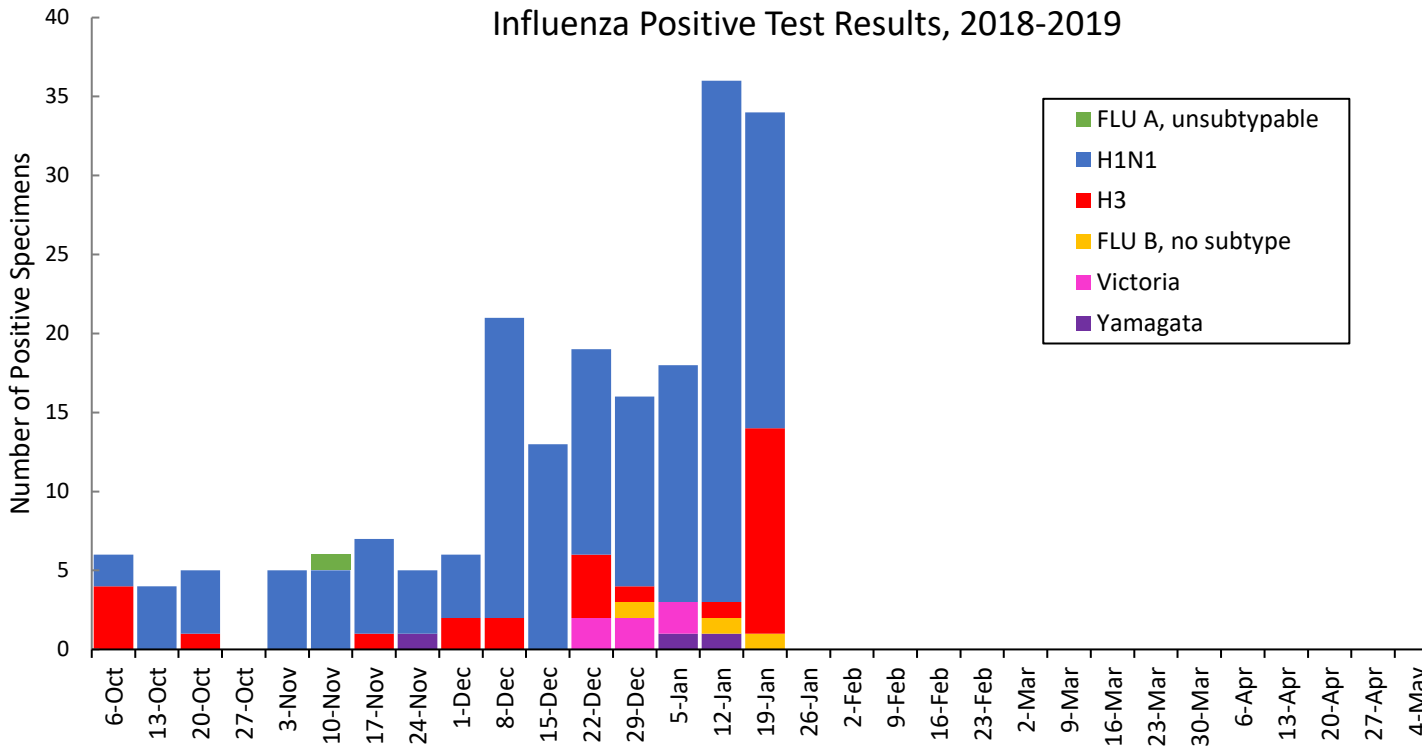
The CDC Influenza Hospitalization Surveillance Project (IHSP) provides population-based rates of hospitalization due to severe influenza-related illness through active surveillance and chart review of lab-confirmed cases from Oct. 1, 2018 until Apr. 30, 2019, for Clinton, Eaton, Ingham, Genesee, and Washtenaw counties. Since Oct. 1, there have been **191 (26 pediatric, 165 adult)** influenza-related hospitalizations reported in the catchment area for the 2018-2019 season.



Washtenaw County was added in 2017-2018

MDHHS Bureau of Laboratories reported 22 new positive influenza results (11C, 1N, 2SE, 8SW)

Respiratory Virus	# Positive Respiratory Virus Results by Region				Overall Total	2017-18 Total
	C	N	SE	SW		
2009 A/H1N1pdm	62	10	27	51	150	80
Influenza A/H3	7	3	3	7	20	579
Influenza B	1	0	8	1	10	220
Total	70	13	38	59	180	879



Based on STARLIMS MDHHS BOL Testing Portal

Note: Flu B subtyping will be reported based on MDHHS BOL testing runs (roughly each month) and will be backtracked into this graph

Most recent MDHHS BOL Flu B subtyping run: **January 10, 2019**

Michigan Sentinel Clinical Lab Respiratory Virus Data

Eleven (11) sentinel clinical labs (3SE, 1SW, 6C, 1N) reported during this week

SE Region

- Influenza A: moderate; increasing
- Influenza B: low
- Parainfluenza: low-moderate
- RSV: moderate-high; some decreases
- Adenovirus: low; slight increase
- hMPV: low-moderate; slight increase

Central Region

- Influenza A: some increases
- Influenza B: sporadic
- Parainfluenza: low
- RSV: low-moderate; variable
- Adenovirus: low
- hMPV: low

SW Region

- Influenza A: moderate; steady
- Influenza B: sporadic
- Parainfluenza: low; slight increase
- RSV: moderate; slight decrease
- Adenovirus: low
- hMPV: low; slight decrease

North Region

- Influenza A: increasing
- Influenza B: sporadic
- Parainfluenza: no data available
- RSV: low; slightly decreased
- Adenovirus: no data available
- hMPV: no data available

There were four (0N, 2C, 0SE, 2SW) new respiratory viral outbreaks reported to MDHHS during this time period. Respiratory outbreaks for the 2018-2019 season are listed in the table below.

Facility Type	C	N	SE	SW	Total	2016-2017 Total	2017-2018 Total
Schools: K-12 & College	2	0	0	2	4	25	14
Long-term Care / Assisted Living Facility	4	1	1	2	8	138	238
Healthcare Facility	0	0	0	0	0	23	4
Daycare	0	0	0	0	0	3	4
Homeless Shelter	0	0	0	0	0	1	0
Correctional Facility	0	0	0	0	0	2	10
Other	0	0	0	0	0	3	0
Total	6	1	1	4	12	195	270

Did you know?

Congregate setting outbreaks of viral respiratory illnesses are required to be reported to your local health department? See:

- [Influenza Guidance for Healthcare Providers](#)
- [Guideline for influenza and Respiratory Virus Outbreaks in Long-Term Care Facilities](#)

FluBytes

- [Top Ten Threats to Global Health in 2019 According to WHO Include Possible Influenza Pandemic](#)
- [Possible Resistance to New Flu Antiviral](#)
- [Flu Season Still Going Strong as Pediatric Death Toll Rises](#)
- [This Year's Flu Vaccine Effective Against Top Influenza Strains](#)

MDHHS Contributors

Bureau of Epidemiology and Population Health – S. Bidol, MPH, S. Eckel, MPH, S. Kim, MPH

Bureau of Family Health Services – M. Doeblner, MPH

Bureau of Labs – B. Robeson, MT, V. Vavricka, MS

For questions or to be added to the distribution list, please contact Sue Kim at KimS2@michigan.gov