

# **Child Care Organizations**

## **Improvements Achieved Due to the Increased Number of Child Care Licensing Consultants Report**

(Pursuant to Public Act 84 of 2015)

**February 1, 2016**

Prepared by

**Bureau of Community and Health Systems**



RICK SNYDER  
GOVERNOR



MIKE ZIMMER  
DIRECTOR

## REPORT AUTHORITY

Public Act 84 of 2015

*Sec. 514. (1) From the funds appropriated in part 1 for the bureau of children and adult licensing from the interdepartmental grant from the department of education, the department shall increase the number of child care licensing consultants and staff. The purpose of the additional staff is to increase the number of monitoring visits to applicants for a child care license and those who are licensed to ensure the health and safety of children in early learning settings across this state.*

*(2) By February 1, the department shall submit a report to the subcommittees, the fiscal agencies, and the senate and house policy offices detailing the improvements that the bureau of children and adult licensing has achieved due to the increased number of child care licensing consultants that were hired using the funds appropriated in part 1 for the bureau of children and adult licensing.*

## EXECUTIVE ORDER

Executive Order No. 2015 – 4 transferred the Office of Child and Adult Licensing (OCAL) from the former Michigan Department of Human Services (DHS) to the Michigan Department of Licensing and Regulatory Affairs (LARA). LARA effectively took over day-to-day operations of OCAL in the 3<sup>rd</sup> quarter of 2015. For purposes of this report, the “department” means the Department of Licensing and Regulatory Affairs.

## DEPARTMENT OVERVIEW

LARA is composed of agencies and commissions that promote business growth and job creation through streamlined, simple, fair, and efficient regulation, while at the same time protect the health and safety of Michigan's citizens.

Formed July 6, 2015, the Bureau of Community and Health Systems (BCHS) serves to protect and assure safe, effective, efficient and accessible community and health care services delivered by state licensed and federally certified providers in Michigan.

The Bureau is responsible for state licensing of facilities, agencies and programs under the Public Health Code, Mental Health Code, Adult Foster Care Facility Licensing Act, and Child Care Organizations Act. The Bureau is also the State Agency responsible for conducting certification activities on behalf of the Centers for Medicare and Medicaid Services (CMS).

In general, the majority of state licensing activities involve the issuance and renewal of licenses to qualified facilities, agencies, and programs; conducting initial, routine and revisit inspections to determine compliance with state and federal requirements; and investigating complaints against state licensed and federally certified providers.

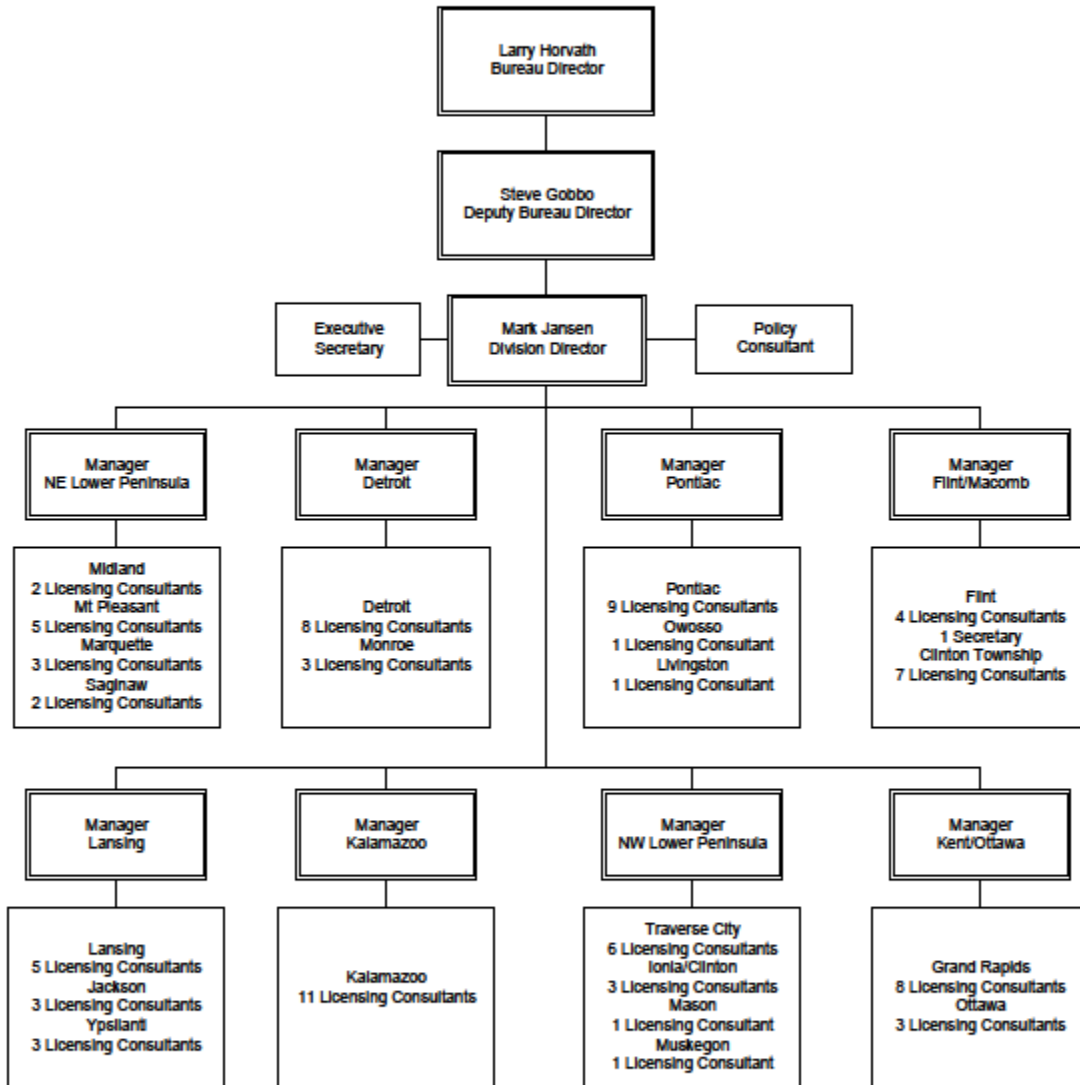
## REPORTING REQUIREMENTS

From the funds appropriated, the Department (LARA) has diligently worked to increase the number of child care licensing consultants and staff in order to increase the number of monitoring visits to applicants for a child care license and those who are licensed to ensure the health and safety of children in early learning settings across this state. The Department reports the following efforts and improvements to meet this goal:

- Executive Order (EO) 2015-4, dated February 9, 2015, transferred child care licensing functions from the former Department of Human Services (DHS) to LARA, effective April 9, 2015. Budgetary functions transferred to LARA October 1, 2015.
- The Bureau of Community and Health Systems (BCHS) was created July 6, 2015. In addition, the Department created the Child Care Licensing Division within BCHS. The new Child Care Licensing Division Director was also hired on July 6, 2015 (Appendix I).
- New service regions were created geographically by taking the current six (6) regions with an average ratio of 150 licensees per every state licensing consultant (inspector) and upgrading to eight (8) regions with a ratio of 110 licensees to every consultant (Appendix II). In addition, two (2) new child care licensing managers were hired and started on January 19, 2016.
- The Department has started the process to hire 18 new licensing consultants and expects completion by late March 2016. Upon completion of the new hires, the 9,830 licensees will be divided by approximately 90 child care licensing consultants for an average ratio of 110 licensees per consultant.
- The Department has been tracking the number of monitoring visits to ensure the health and safety, and to allow for comparison purposes after the completion of the new hires.
- The Department has compiled and begun working with the legislature to propose matching the 2014 federal legislative changes to current Michigan law.

# APPENDIX I - NEW ORGANIZATIONAL STRUCTURE

## Bureau of Community and Health Systems Child Care Licensing Division 100 Employees



# APPENDIX II - NEW LICENSING REGIONS STATE MAP

