

E-Quote Install

You must have Java (version 8 or higher) installed on your computer to run the E-Quote application. To determine if you have Java installed, go to the Check Java Install section of this document

Table of Contents

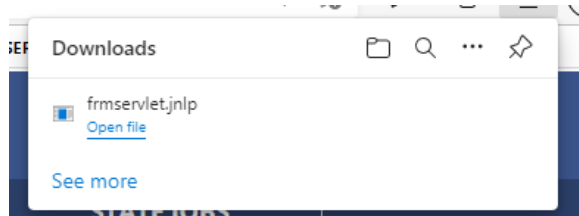
E-Quote Install	1
Instructions:.....	1
Verify Java is Installed in Windows:.....	2
Installing Java.....	4
“Untrusted website” error.....	6
Downloading errors	9

Instructions:

The application may be downloaded from the internet by navigating to:

<https://www.michigan.gov/lara/bureau-list/lcc/equote>

Select the link “[E-Quote Entry Screen for Vendors - Supported on all web browsers with Java 8 or higher](#)”, which will trigger a download of a file named frmServlet.jnlp.



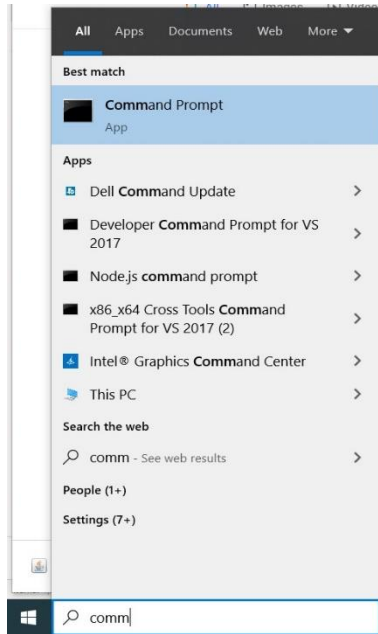
Once the file is downloaded, you should click the folder icon, then right-click on the file to “Send To...” the desktop. This will create a shortcut you can use to access the E-Quote application without needing to go to the webpage.

Note: If frmServlet.jnlp doesn’t download, please try a different browser, or refer to the section below titled “Exception Site List”. Your employer may also have security policies in force that prevent the download and/or execution of the application.

Double-click the new desktop icon and initially, a “java console” window will open. You can ignore (but not close) this window, then another window will display, along with the login box. You can now log in with the credentials you were provided. If you get a security warning popup, click the “Continue” button.

Verify Java is Installed in Windows:

1. Open a command prompt window by searching in the bottom left-hand corner.



2. Type in the command “where java” without the quotes. This should provide you with a path if Java is installed. Highlight and copy this path, you may need it for step 3. If no path, then see the “Installing Java” section.

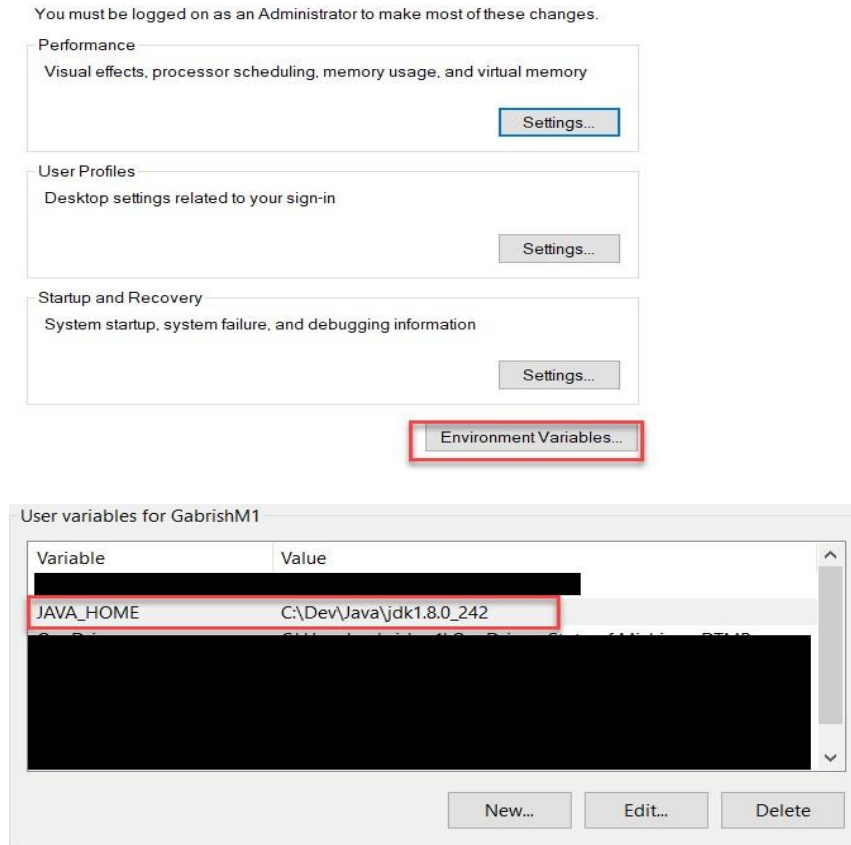
```
Command Prompt
Microsoft Windows [Version 10.0.18363.1256]
(c) 2019 Microsoft Corporation. All rights reserved.

C:\WINDOWS\system32>where java
C:\Program Files (x86)\Common-Files\Oracle\Java\javapath\java.exe
C:\Dev\Java\jdk1.8.0_242\bin\java.exe
C:\Program Files\Zulu\zulu-11\bin\java.exe

C:\WINDOWS\system32>
```

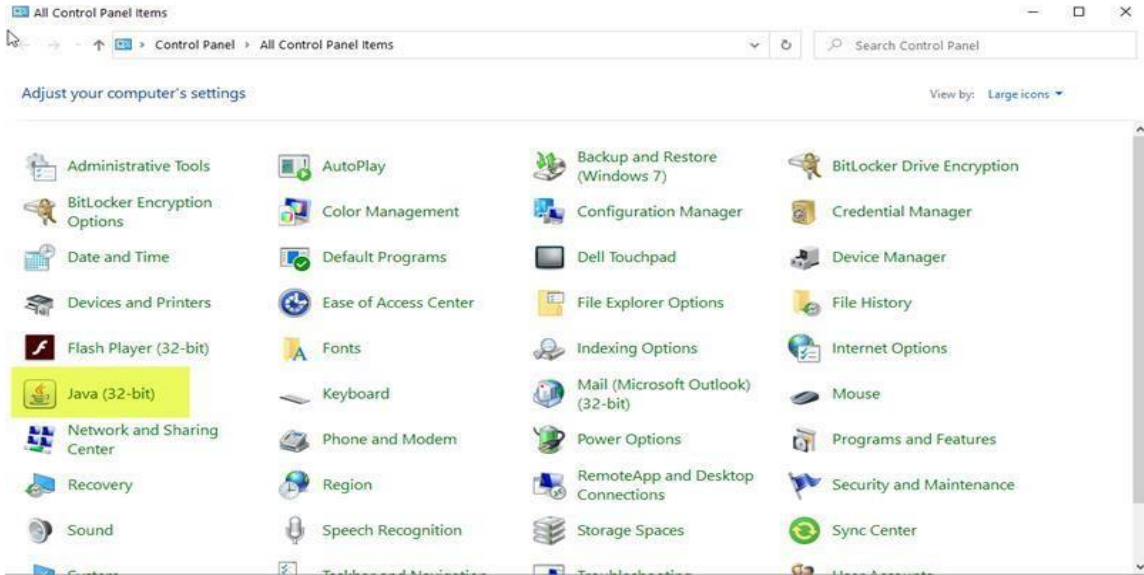
3. Make sure that your JAVA_HOME variable is set to the path indicated in the previous step:

Open “Control Panel” Advanced System Settings (**Control Panel\All Control Panel Items\System**) and select Environment Variables. If you don’t have a “Java_Home” entry, or the path is incorrect, you may add or edit as needed. (You may be able to search for “Environmental Variables” in “Settings” if you are having problems navigating in “Control Panel”.)

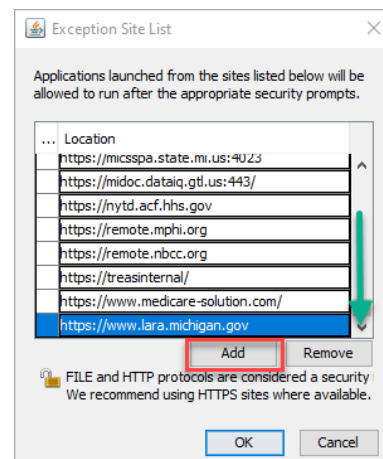
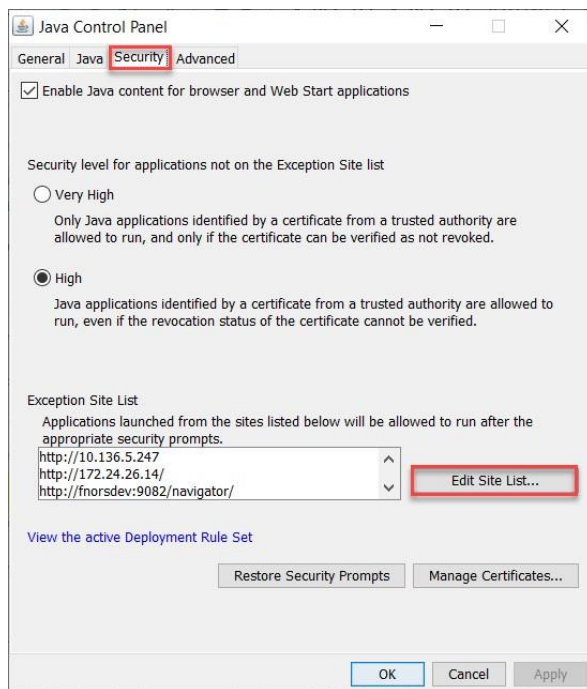


Installing Java

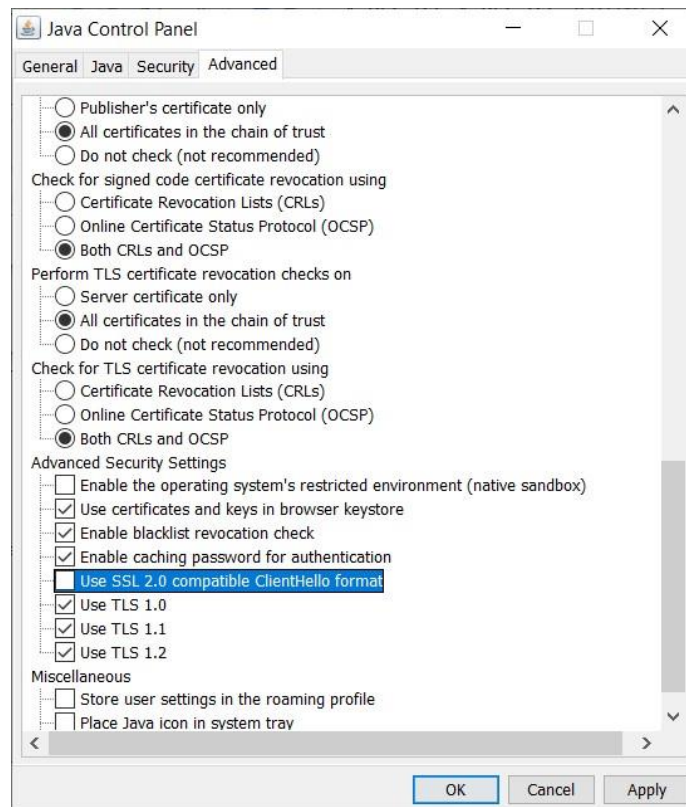
1. Navigate to <https://www.java.com/en/download> and click the link to “Agree and Start Free Download”.
2. Navigate to the Java control panel from your computers control panel



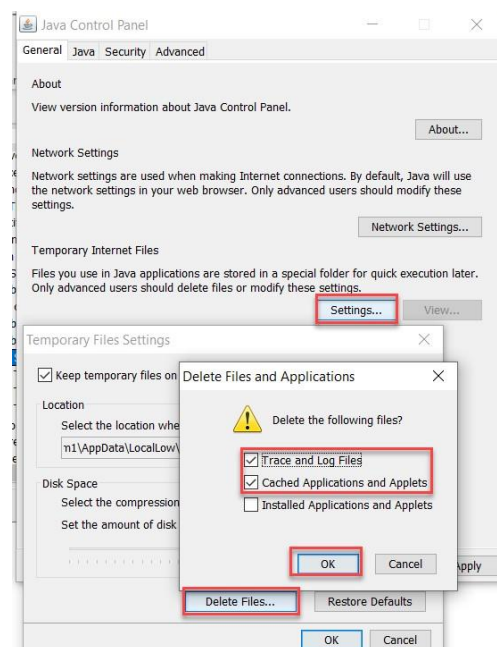
3. Click the “Edit Site List” button on the “Security” tab of the control Panel. Click the “Add” button and add “https://www.lara.michigan.gov” to the list.



4. In the “Advanced” tab make sure that Use SSL 2.0 compatible ClientHello format is Un-checked



5. Delete temporary files by navigating to the “General” tab, selecting “Settings...”, selecting “Delete Files...”, and clicking “OK” when the first two checkboxes are checked. See image.



“Untrusted website” error

As stated in the Instructions section, you will most likely still see this error:



Please click continue to continue through to the log in.

To potentially eliminate this message, you can download and import the website security certificate as follows:

Download the certificate:

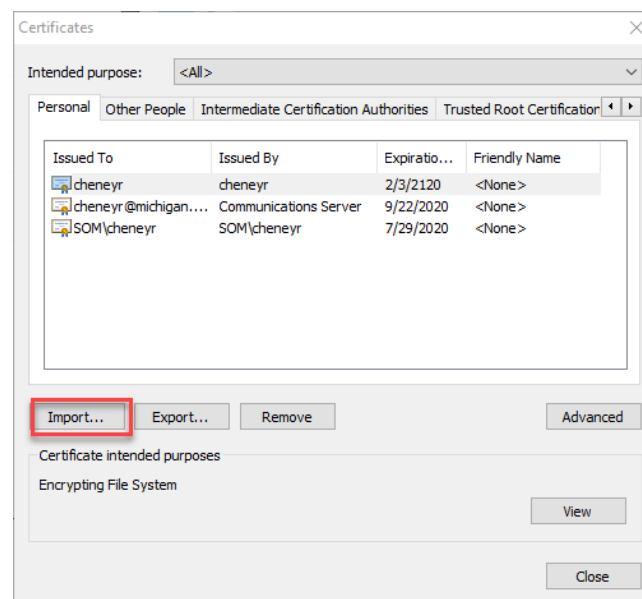
Go to <https://www.michigan.gov/lara/-/media/Project/Websites/lara/lcc/EQuoteCert.cer>

Import The Certificate:

For users with Mac OS, follow the certificate importation instructions at this link:

https://www.digicert.com/kb/ssl-support/p12-import-export-mac-mavericks-server.htm#import_certificate

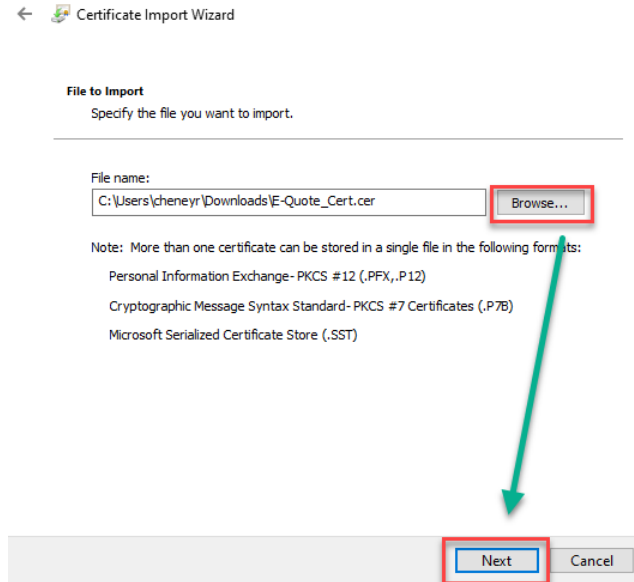
For Windows users, open “Settings” on the browser you will be using. Search for “Certificates”. Click on “Manage Certificates”. This should open a pop-up similar to this:



Click “Import...”

Click "Next"

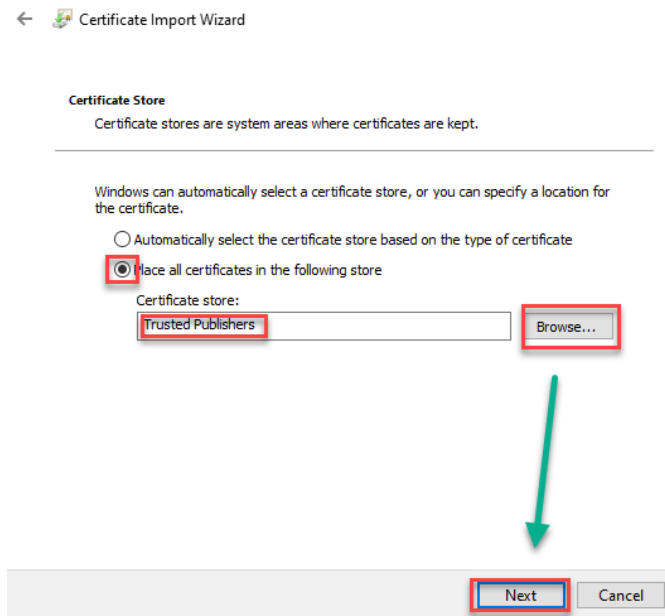
Click "Browse" and select the file from the export, then Click "Next"



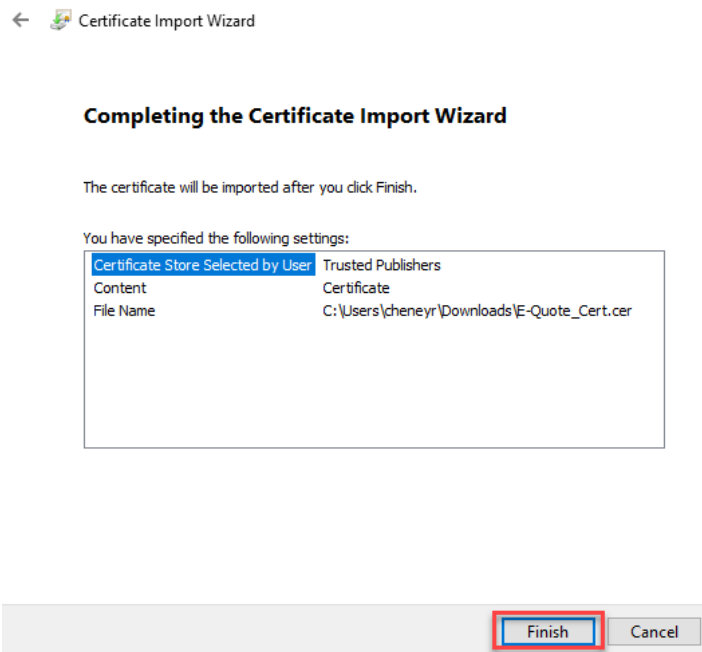
Select "Place all Certificates in the following store"

Browse and select "Trusted Publisher"

Click "Next"

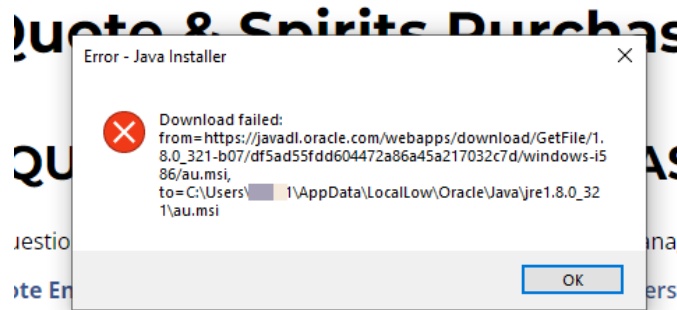


Click "Finish", then "OK"



Downloading errors

If you get an error like this when trying to **download the Java installer**, then you will need to contact your IT department to have them resolve the issue.



If you are getting an error with the **download of the frmervlet.jnlp file**, verify that you have included the LARA web site in the trusted website list (see Installing Java, steps 2 and 3)