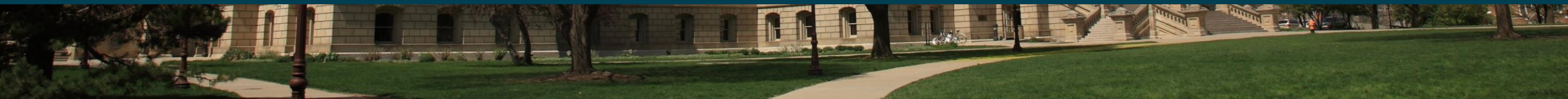
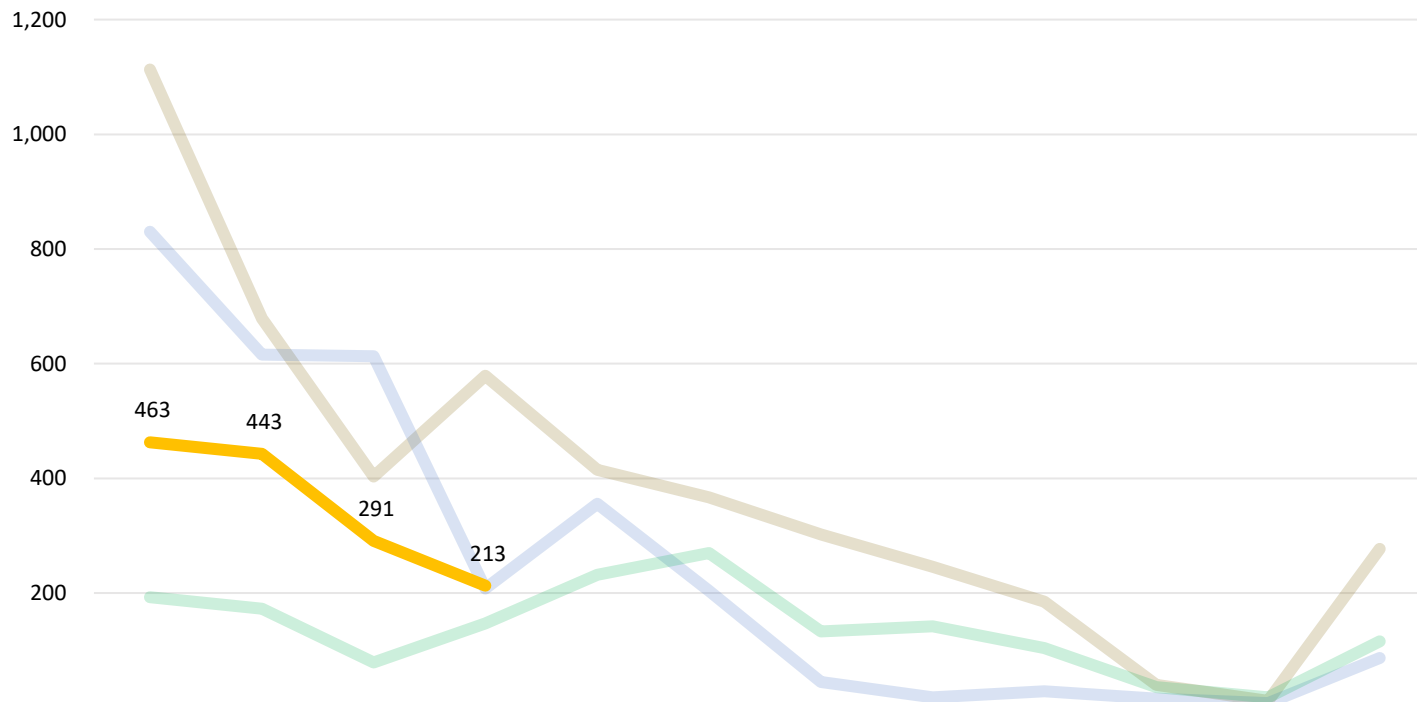




Michigan Rehabilitation Services • MRS
Michigan Department of Labor and Economic Opportunity
Employment and Training



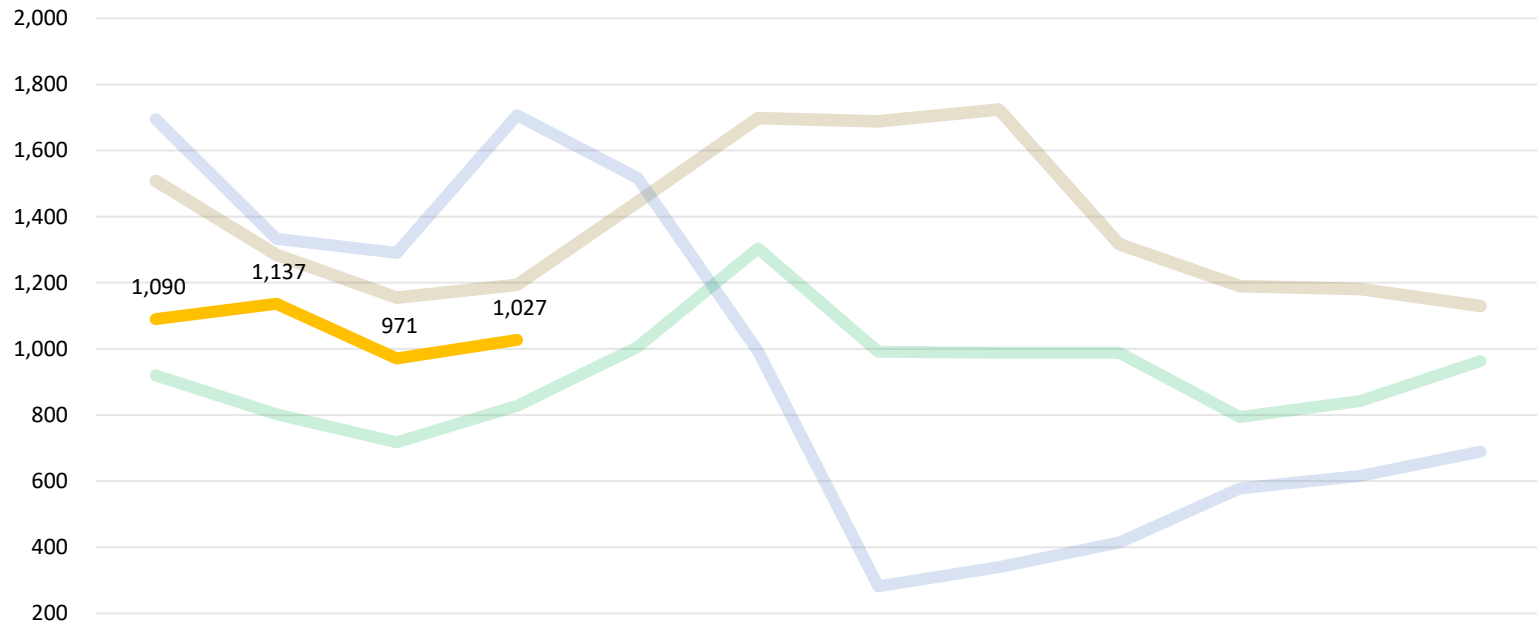
MRS Performance – Prior-to-application (PTA) Referrals for Services



	October	November	December	January	February	March	April	May	June	July	August	September
FY19 PTA New Referrals for Services	1,113	679	403	579	415	367	302	246	185	40	12	277
FY20 PTA New Referrals for Services	830	616	613	208	356	204	45	18	29	16	8	87
FY21 PTA New Referrals for Services	193	173	79	147	232	270	133	142	104	36	18	116
FY22 PTA New Referrals for Services	463	443	291	213								

Year-to-date (YTD) Cumulative Totals	
Fiscal Year	Cases
YTD FY22:	1,410
FY21 YTD: FY21 Year End:	592 1,643
FY20 YTD: FY20 Year End:	2,294 3,057
FY19 YTD: FY19 Year End:	2,774 4,618

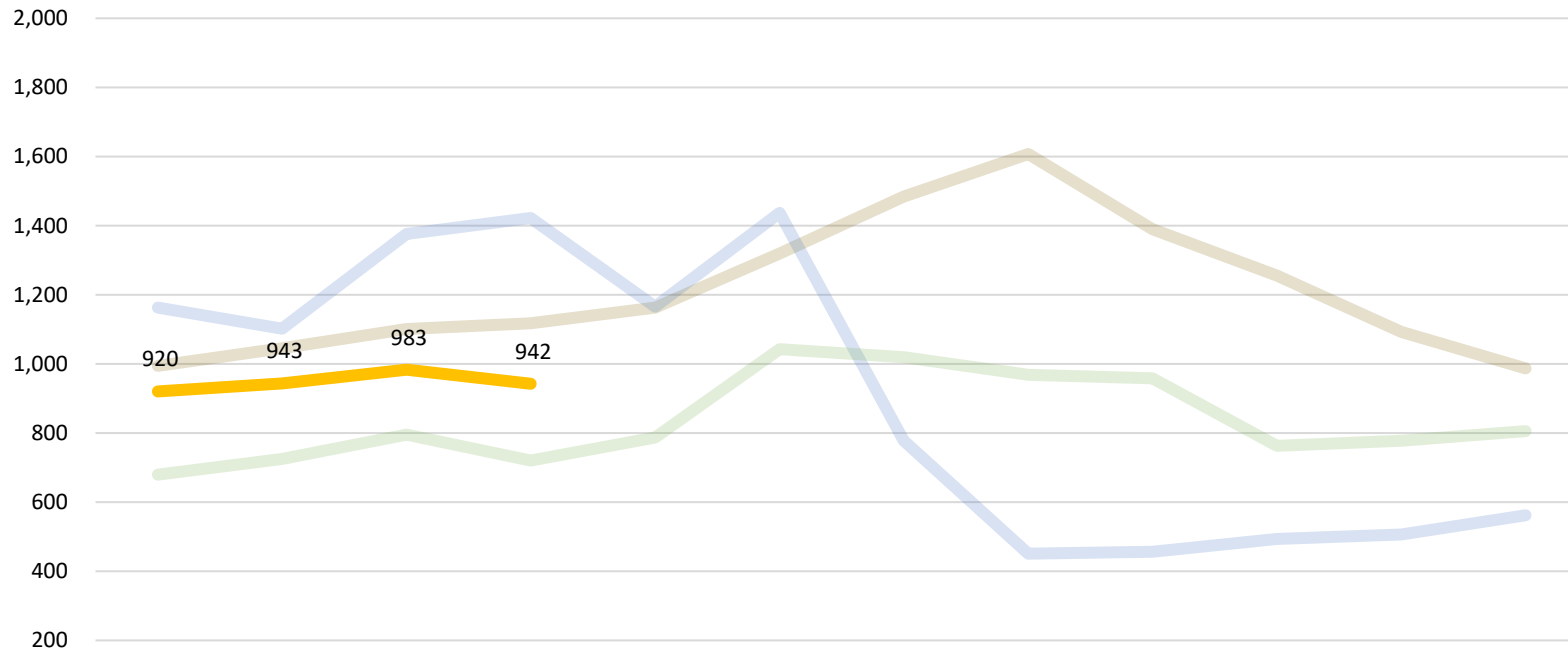
MRS Performance – New VR Applications



Year-to-date (YTD) Cumulative Totals	
Fiscal Year	Cases
YTD FY22:	4,225
FY21 YTD: FY21 Year End:	3,281 11,159
FY20 YTD: FY20 Year End:	6,025 11,455
FY19 YTD: FY19 Year End:	5,142 16,514

	October	November	December	January	February	March	April	May	June	July	August	September
FY19 New Applications	1,508	1,285	1,155	1,194	1,444	1,698	1,688	1,724	1,317	1,190	1,181	1,130
FY20 New Applications	1,695	1,333	1,290	1,707	1,517	993	282	340	415	578	616	689
FY21 New Applications	920	803	718	828	1,006	1,304	991	989	989	794	842	963
FY22 Application	1,090	1,137	971	1,027								

MRS Performance – Eligibility

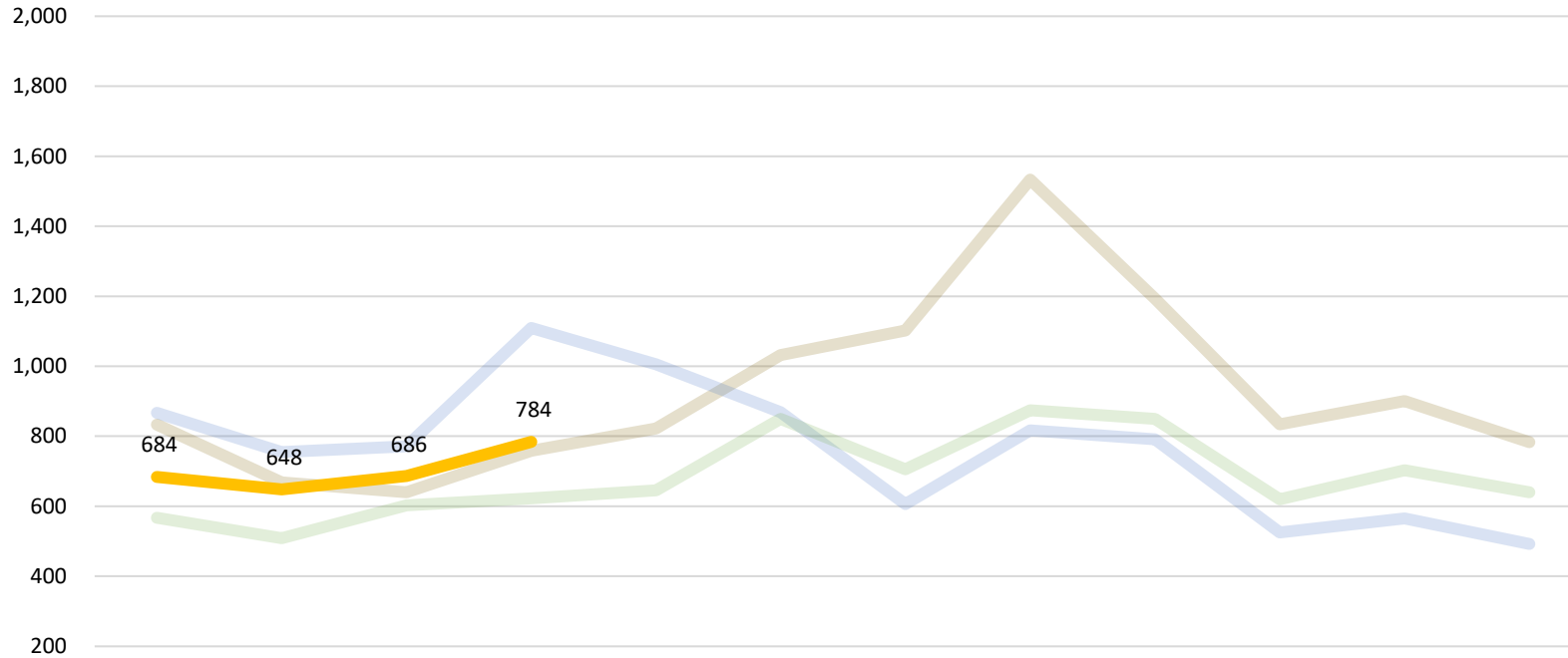


	October	November	December	January	February	March	April	May	June	July	August	September
FY19 Eligibility	994	1,045	1,101	1,117	1,163	1,319	1,484	1,607	1,390	1,255	1,092	987
FY20 Eligibility	1,163	1,102	1,376	1,422	1,166	1,437	778	451	456	493	506	562
FY21 Eligibility	679	725	795	720	787	1,042	1,019	968	958	763	778	805
FY22 Eligible	920	943	983	942								

Year-to-date (YTD) Cumulative Totals

Fiscal Year	Cases
YTD FY22:	3,788
FY21 YTD: FY21 Year End:	2,919 10,039
FY20 YTD: FY20 Year End:	5,063 10,912
FY19 YTD: FY19 Year End:	4,257 14,554

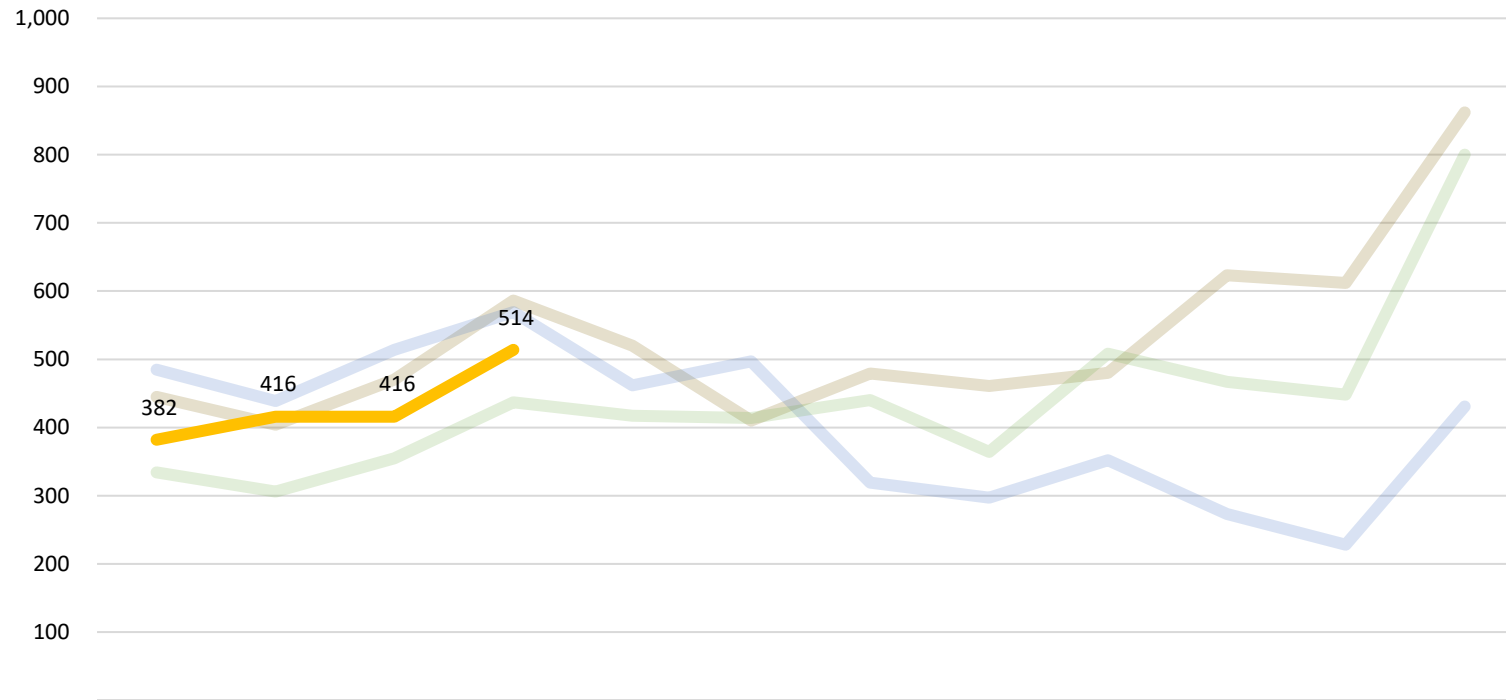
MRS Performance – Service / IPE



Year-to-date (YTD) Cumulative Totals	
Fiscal Year	Cases
YTD FY22:	2,802
FY21 YTD: FY21 Year End:	2,304 8,192
FY20 YTD: FY20 Year End:	3,502 9,172
FY19 YTD: FY19 Year End:	2,899 11,099

	October	November	December	January	February	March	April	May	June	July	August	September
FY19 Service	833	668	640	758	822	1,032	1,102	1,533	1,193	834	901	783
FY20 Service	867	755	771	1,109	1,005	869	606	817	791	525	565	492
FY21 Service	567	509	603	623	645	850	706	874	850	620	703	640
FY22 Service	684	648	686	784								

MRS Performance – Exit Employed



	October	November	December	January	February	March	April	May	June	July	August	September
FY19 Exit Employed	445	404	470	586	520	410	479	461	480	623	612	862
FY20 Exit Employed	485	439	514	569	462	497	319	297	352	273	228	431
FY21 Exit Employed	334	306	355	437	417	414	440	364	508	467	448	800
FY22 Exit Employed	382	416	416	514								

Year-to-date (YTD) Cumulative Totals	
Fiscal Year	Cases
YTD FY22:	1,728
FY21 YTD: FY21 Year End:	1,432 5,290
FY20 YTD: FY20 Year End:	2,007 4,866
FY19 YTD: FY19 Year End:	1,905 6,352

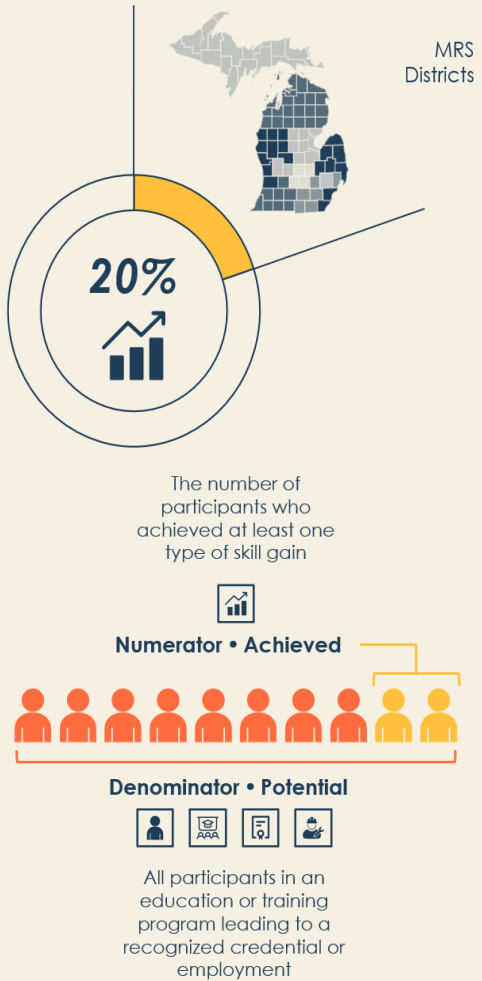
MRS WIOA Performance – PY21-Q1 Measurable Skill Gains

JULY

Program Year



JUNE



Year-to-date (YTD) Cumulative Totals		
Program Year	Participants	Achieved
PY21 – Q1: (July – Sept 2021)	165	5.9%
PY20 – Q1: (July 2020 – Sept 2021)	134	4%

MRS Year-to-date Total VR Cases Summary by Fiscal Year

